

http://farbe.li.tu-berlin.de/MI06/MI06L0NP.PDF /PS; inizio dell'output
N: nessuna linearizzazione 3D (OL) nel file (F) o PS-startup (S), pagine 1/2

vedi file simili: http://farbe.li.tu-berlin.de/MI06/MI06.HTM
http://130.149.60.45/~farbmatrik o http://farbe.li.tu-berlin.de

iscrizione TUB: 20160501-MI06/MI06L0NP.PDF /PS
Applicazione per la misura dell'output su display

TUB materiale: code=rh4ta

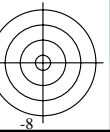
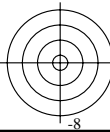
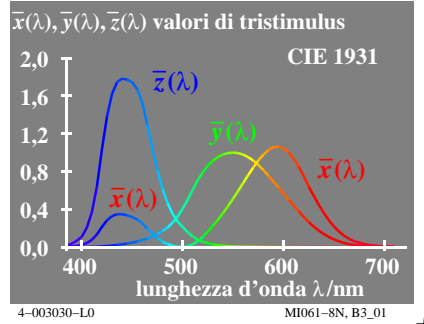
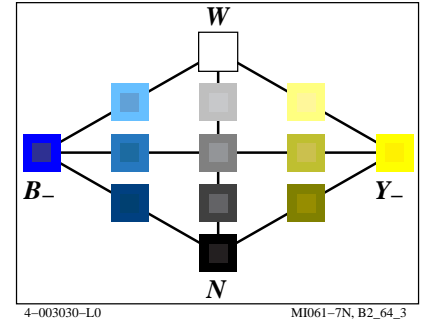
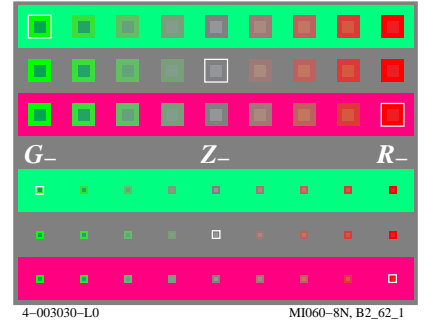
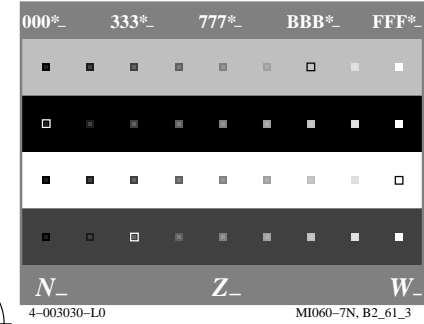
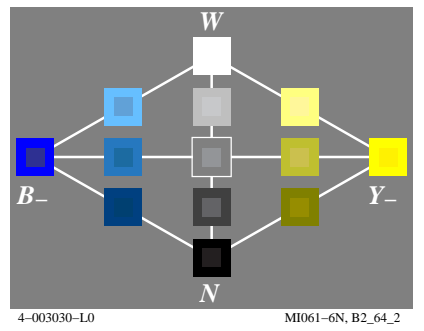
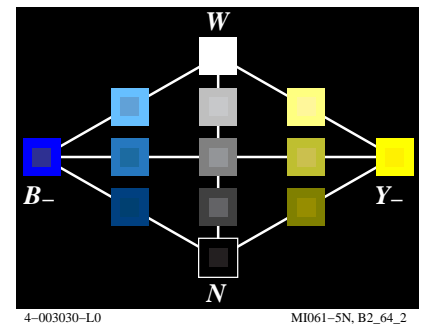
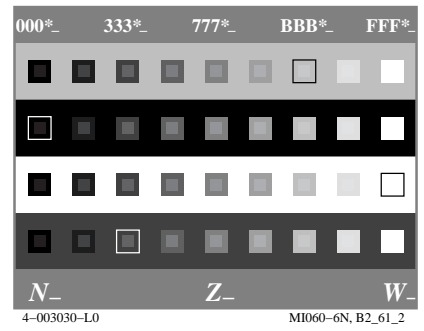
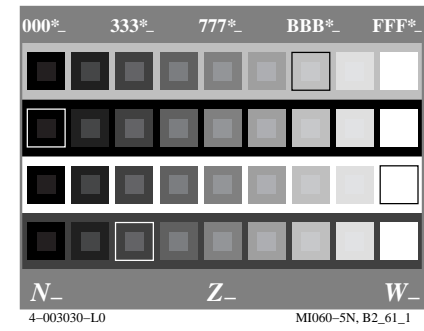
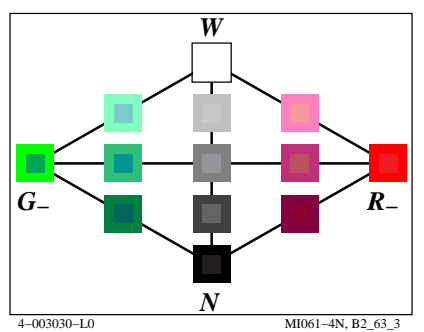
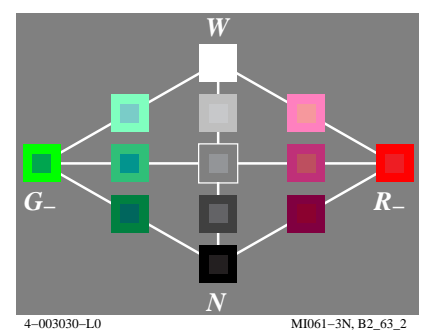
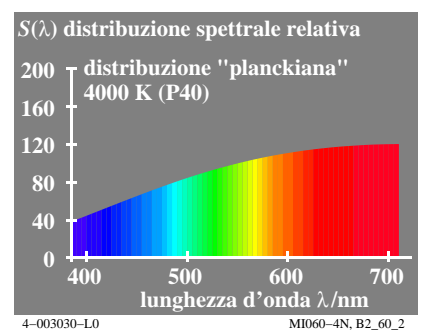
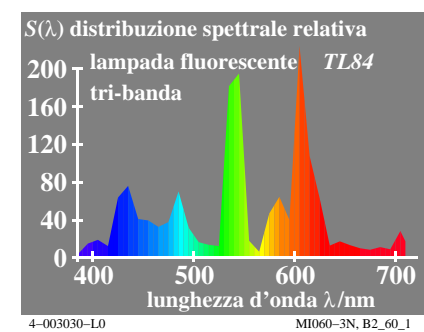
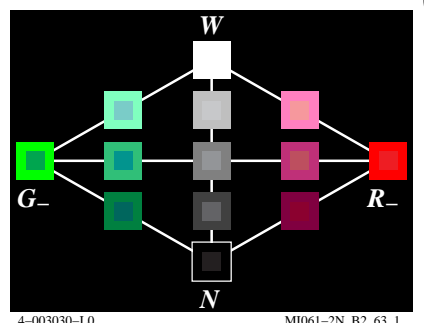
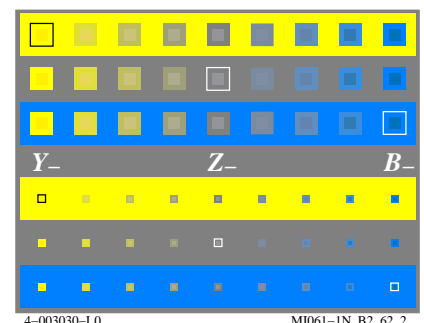
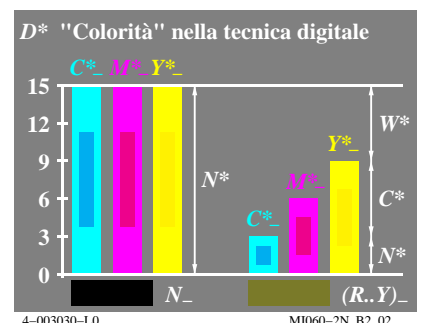
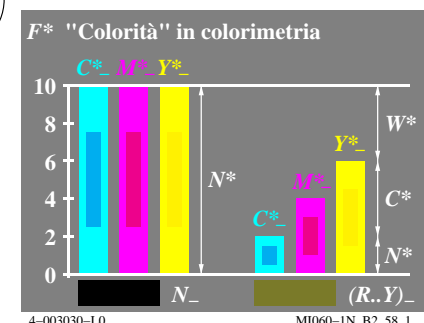
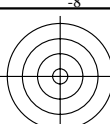
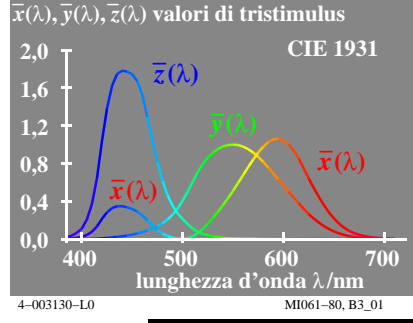
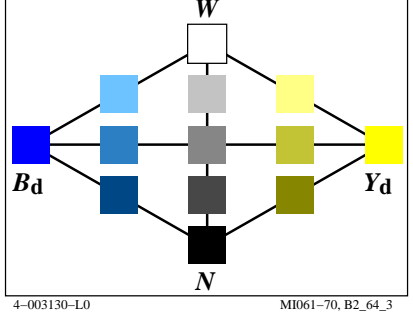
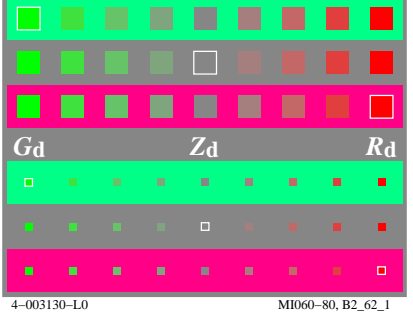
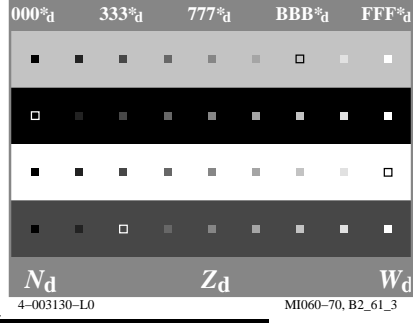
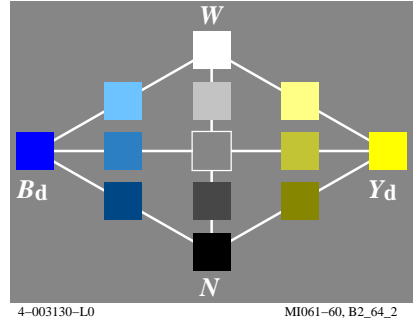
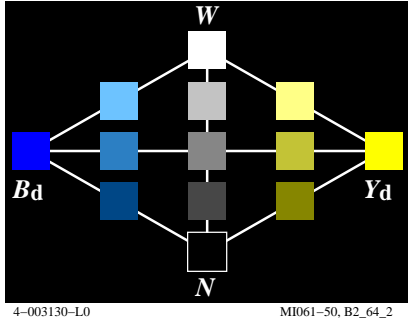
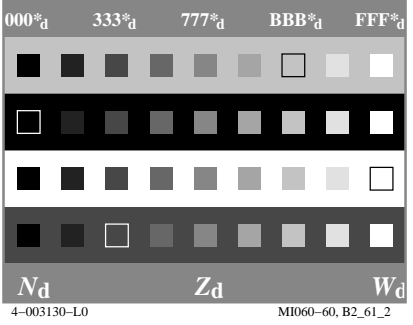
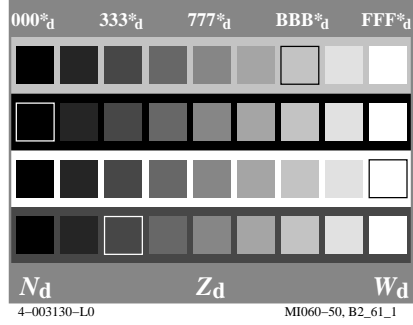
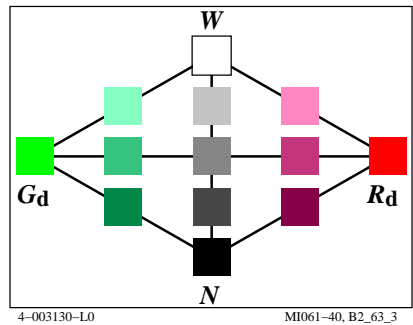
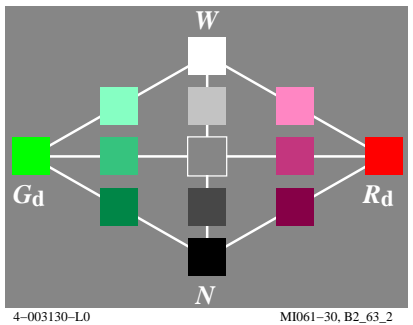
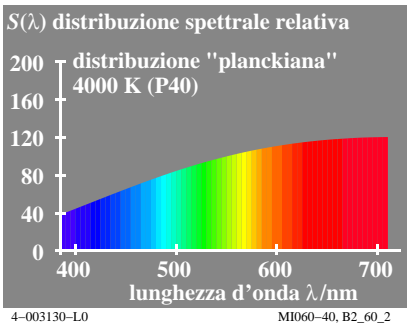
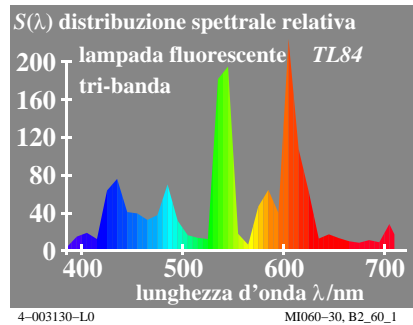
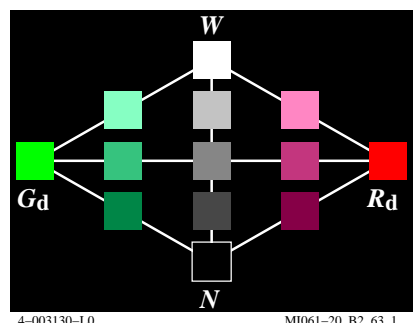
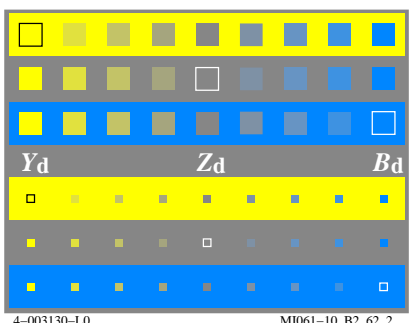
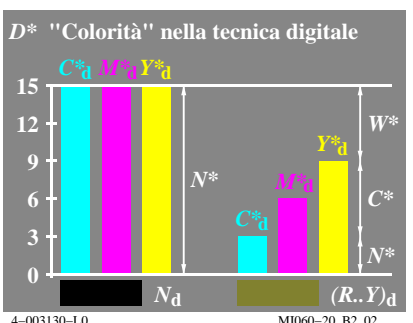
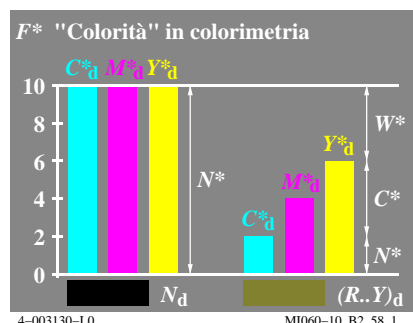


Grafico TUB-MI06; Grafica computerizzata e colorimetria
Serie di immagini MI06, 3D=0, de=0

Input: rgb/cmyk -> rgb/cmyk
Output: nessun cambiamento

vedi file simili: <http://farbe.li.tu-berlin.de/MI06/MI06.HTM>
<http://130.149.60.45/~farbmatrik> o <http://farbe.li.tu-berlin.de>

iscrizione TUB: 20160501-MI06/MI06L0NP.PDF /PS
Applicazione per la misura dell'output su display, nessuna separazione
TUB materiale: code=rh4ta



http://farbe.li.tu-berlin.de/MI06/MI06L0NP.PDF /.PS; inizio dell'output
N: nessuna linearizzazione 3D (OL) nel file (F) o PS-startup (S), pagine 1/2

vedi file simili: http://farbe.li.tu-berlin.de/MI06/MI06.HTM
http://130.149.60.45/~farbmatrik o http://farbe.li.tu-berlin.de

iscrizione TUB: 20160501-MI06/MI06L0NP.PDF /.PS
Applicazione per la misura dell'output su display

TUB materiale: code=rh4ta

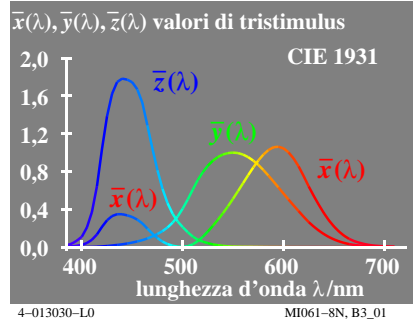
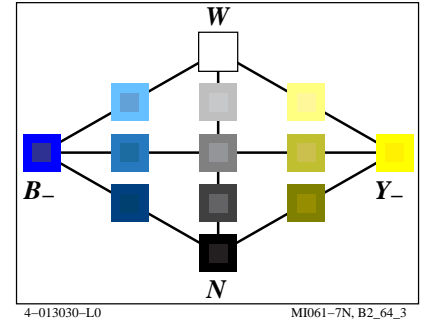
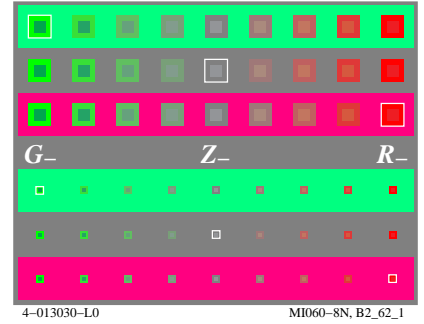
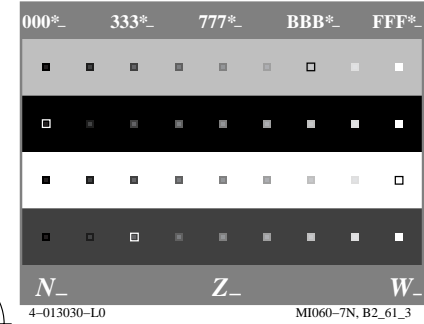
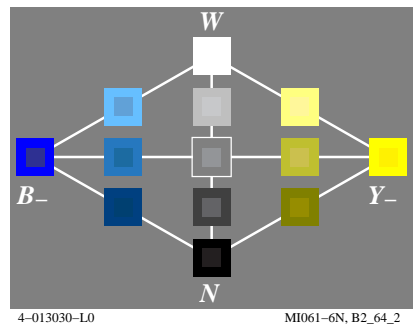
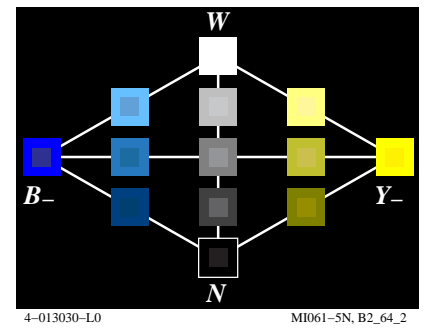
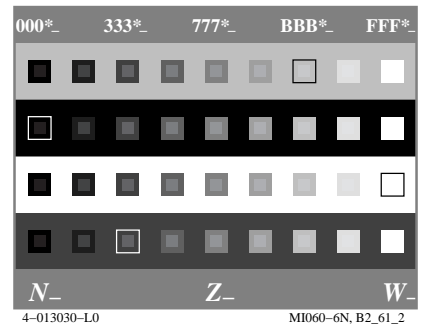
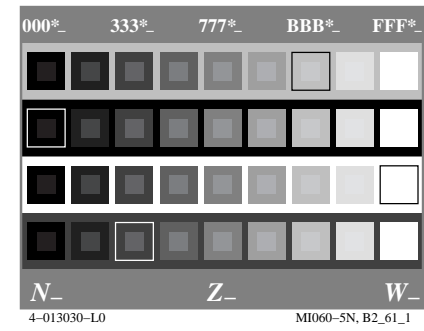
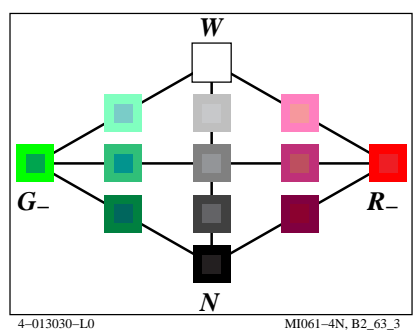
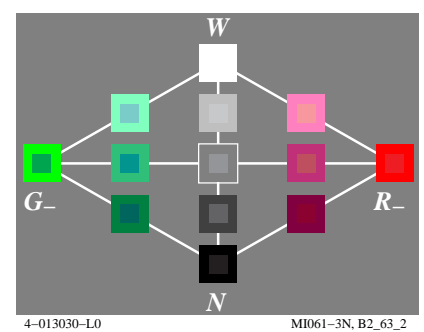
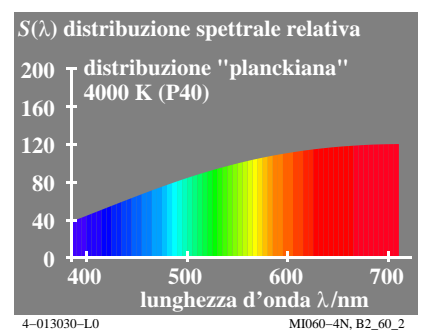
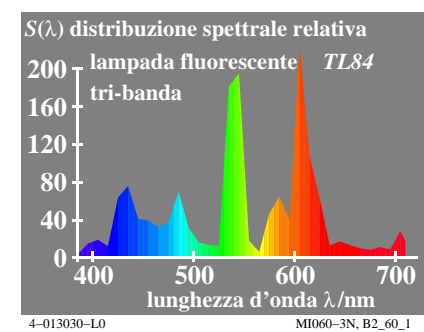
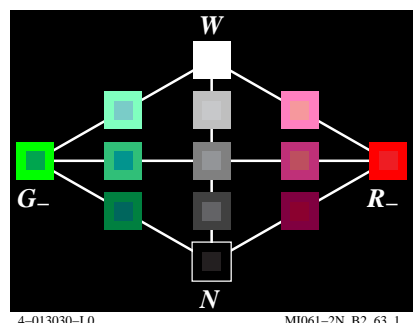
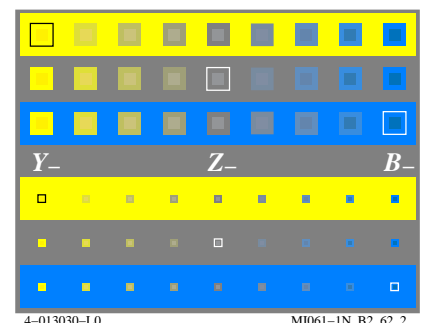
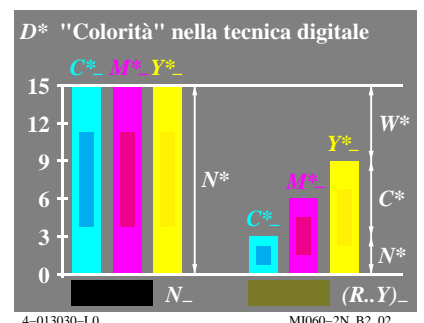
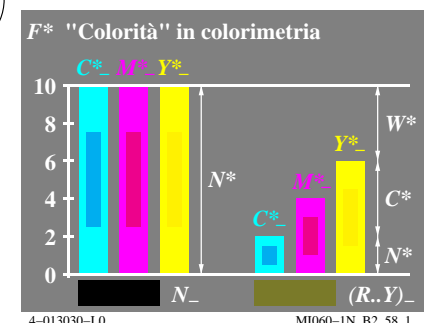
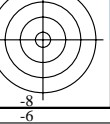
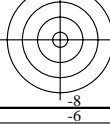
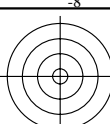


Grafico TUB-MI06; Grafica computerizzata e colorimetria
Serie di immagini MI06, 3D=0, de=1

Input: rgb/cmyk -> rgb/cmyk
Output: nessun cambiamento



vedi file simili: http://farbe.li.tu-berlin.de/MI06/MI06.HTM
http://130.149.60.45/~farbmatrik o http://farbe.li.tu-berlin.de

iscrizione TUB: 20160501-MI06/MI06L0NP.PDF /PS
Applicazione per la misura dell'output su display, nessuna separazione
TUB materiale: code=rh4ta

