

http://farbe.li.tu-berlin.de/MI47/MI47L0NP.PDF /.PS; inizio dell'output
N: nessuna linearizzazione 3D (OL) nel file (F) o PS-startup (S), pagine 1/1

vedi file simili: http://farbe.li.tu-berlin.de/MI47/MI47.HTM
http://130.149.60.45/~farbmerrick o http://farbe.li.tu-berlin.de

iscrizione TUB: 20160501-MI47/MI47L0NP.PDF /.PS
Applicazione per la misura dell'output su display

TUB materiale: code=rh4ta

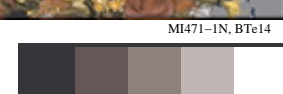
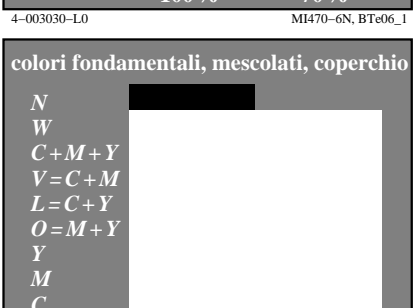
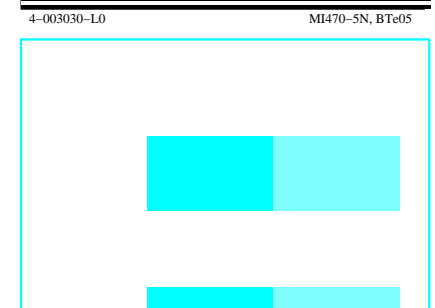
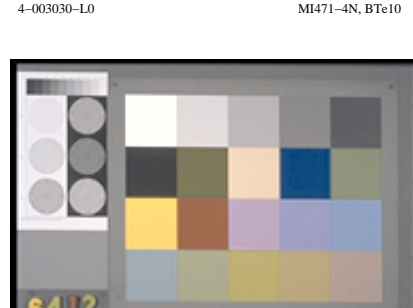
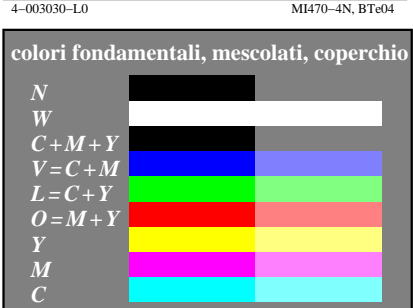
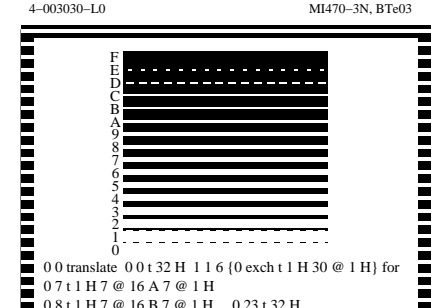
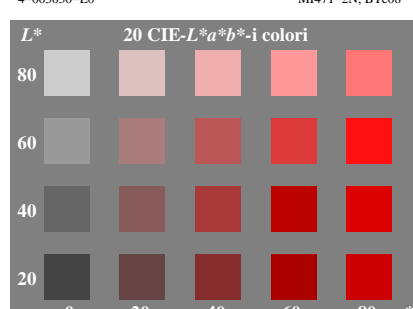
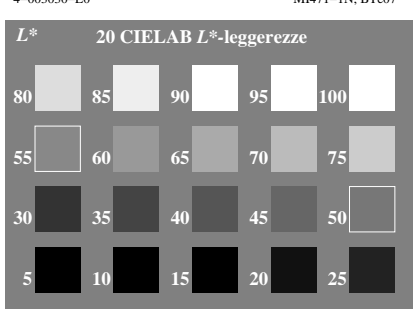
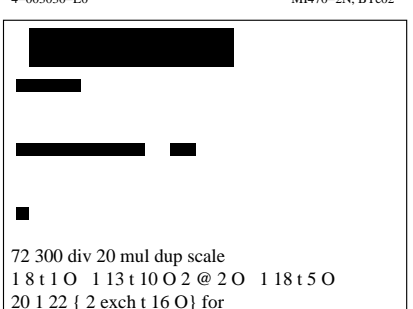
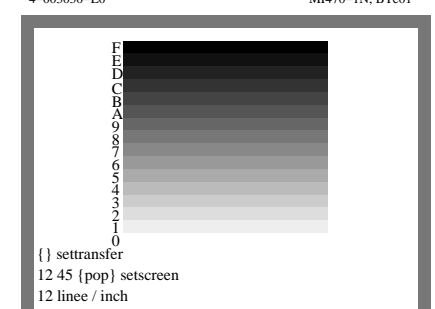
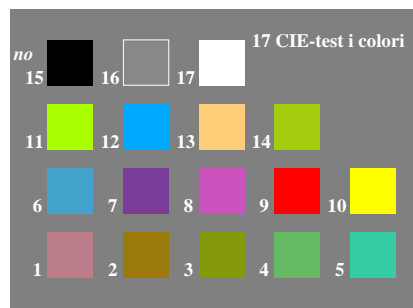
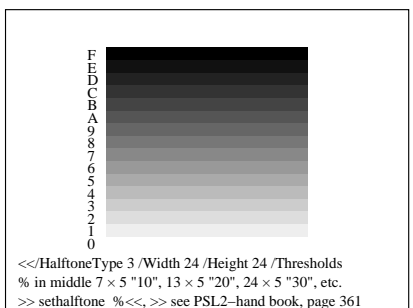
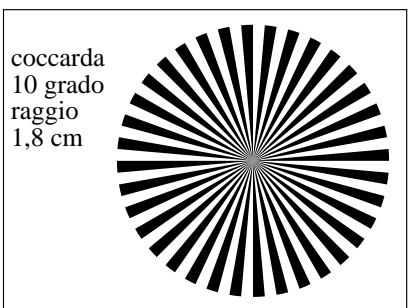
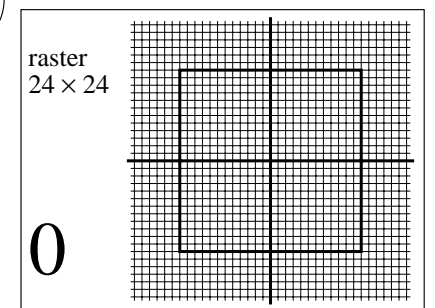
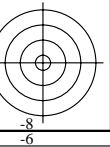
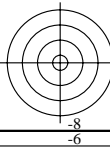
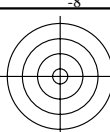


Grafico TUB-MI47; Grafica computerizzata e colorimetria
Serie di immagini MI47, 3D=0, de=0

Input: rgb/cmyk -> rgb/cmyk
Output: nessun cambiamento