

http://farbe.li.tu-berlin.de/MI52/MI52L0N0.TXT /PS; inizio dell'output
N: nessuna linearizzazione 3D (OL) nel file (F) o PS-startup (S), pagina 1/1

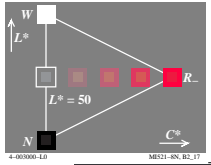
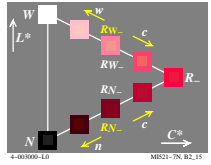
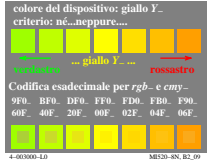
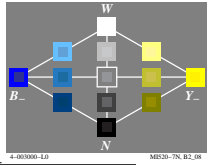
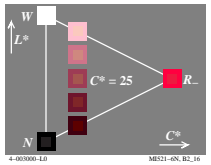
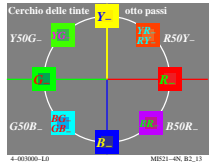
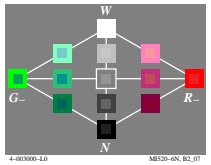
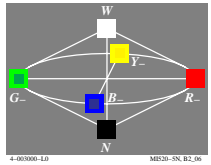
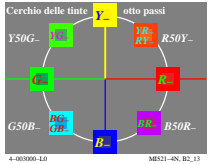
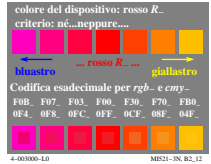
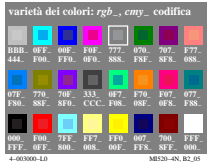
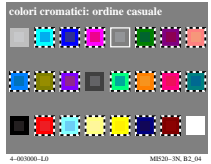
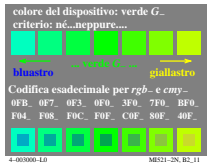
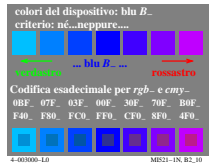
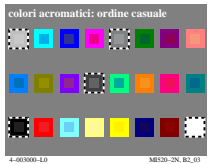
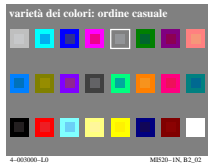


Grafico TUB-MI52; Grafica computerizzata e colorimetria
Serie di immagini MI52, 3D=0, de=0

Input: rgb/cmyk -> rgb/cmyk
Output: nessun cambiamento

Applicazione per la misura dell'output su display

TUB materiale: code=rh4dia

vedi file simili: http://farbe.li.tu-berlin.de/MI52/MI52.HTM
http://130.149.60.45/~farbnetrik o http://farbe.li.tu-berlin.de