

http://farbe.li.tu-berlin.de/MI52/MI52L0N2.TXT /PS; inizio dell'output
N: nessuna linearizzazione 3D (OL) nel file (F) o PS-startup (S), pagine 1/1

vedi file simili: http://farbe.li.tu-berlin.de/MI52/MI52.HTM
http://130.149.60.45/~farbmtrik o http://farbe.li.tu-berlin.de

iscrizione TUB: 20190801-MI52/MI52L0N2.TXT /PS
Applicazione per la misura dell'output su display

TUB materiale: code=rh4ta



varietà dei colori: ordine casuale

4-003000-L0 MI520-1N, B2_02

colori acromatici: ordine casuale

4-003000-L0 MI520-2N, B2_03

colori del dispositivo: blu B_
criterio: né...neppure....

... blu B_ ...

Codifica esadecimale per rgb_ e cmy_
0BF_ 07F_ 03F_ 00F_ 30F_ 70F_ B0F_
F40_ F80_ FC0_ FF0_ CF0_ 8F0_ 4F0_

4-003000-L0 MI521-1N, B2_10

colore del dispositivo: verde G_
criterio: né...neppure....

... verde G_ ...

Codifica esadecimale per rgb_ e cmy_
0FB_ 0F7_ 0F3_ 0F0_ 3F0_ 7F0_ BF0_
F04_ F08_ F0C_ F0F_ C0F_ 80F_ 40F_

4-003000-L0 MI521-2N, B2_11

colori cromatici: ordine casuale

4-003000-L0 MI520-3N, B2_04

varietà dei colori: rgb_, cmy_ codifica

BBB_ 0FF_ 00F_ F0F_ 777_ 070_ 707_ F77_ 444_ F00_ FF0_ 0F0_ 888_ F8F_ 8F8_ 088_

07F_ 770_ 70F_ 333_ 0F7_ F70_ F07_ 077_ F80_ 88F_ 8F0_ CCC_ F08_ 08F_ 0F8_ F88_

000_ F00_ 7FF_ FF7_ FF0_ 007_ 700_ FFF_ FFF_ 0FF_ 800_ 008_ 00F_ FF8_ 8FF_ 000_

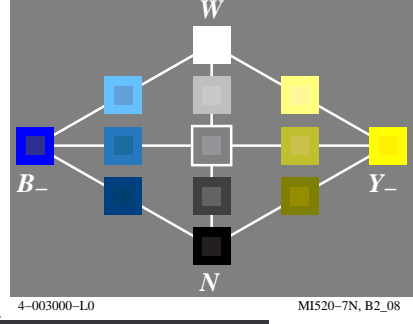
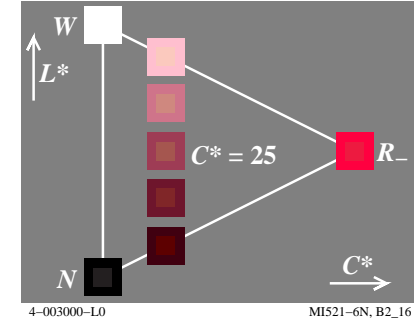
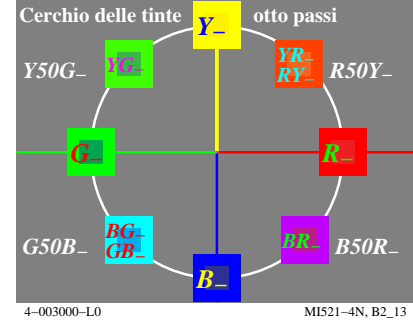
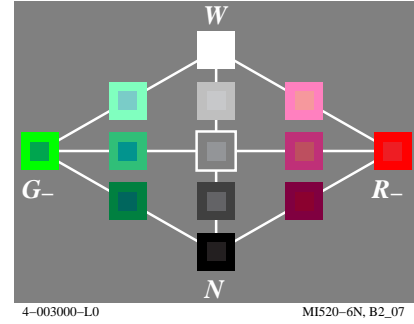
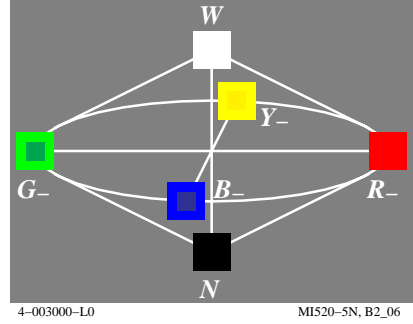
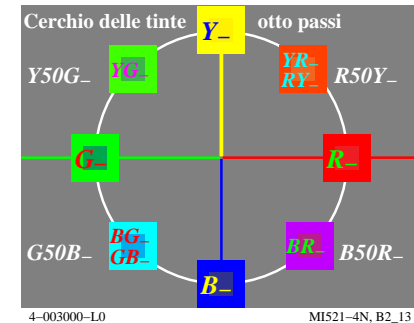
4-003000-L0 MI520-4N, B2_05

colore del dispositivo: rosso R_
criterio: né...neppure....

... rosso R_ ...

Codifica esadecimale per rgb_ e cmy_
F0B_ F07_ F03_ F00_ F30_ F70_ FB0_
0F4_ 0F8_ 0FC_ 0FF_ 0CF_ 08F_ 04F_

4-003000-L0 MI521-3N, B2_12



colore del dispositivo: giallo Y_
criterio: né...neppure....

... giallo Y_ ...

Codifica esadecimale per rgb_ e cmy_
9F0_ BF0_ DF0_ FF0_ FD0_ FB0_ F90_
60F_ 40F_ 20F_ 00F_ 02F_ 04F_ 06F_

4-003000-L0 MI520-8N, B2_09

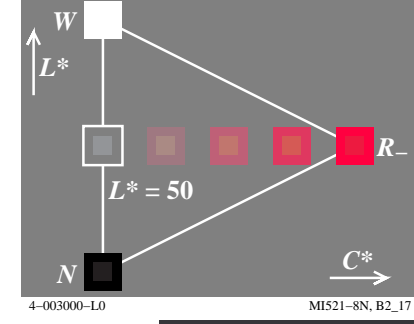
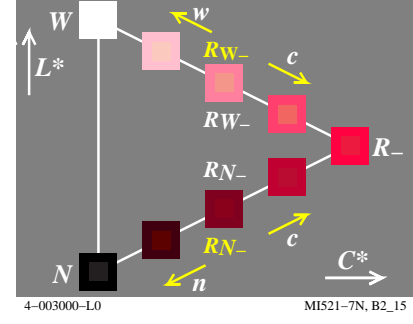


Grafico TUB-MI52; Grafica computerizzata e colorimetria
Serie di immagini MI52, 3D=0, de=0

Input: rgb/cmyk -> rgb/cmyk
Output: nessun cambiamento

