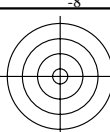


http://farbe.li.tu-berlin.de/MI52/MI52LONA.TXT /PS; inizio dell'output
N: nessuna linearizzazione 3D (OL) nel file (F) o PS-startup (S), pagine 1/2

vedi file simili: http://farbe.li.tu-berlin.de/MI52/MI52.HTM
http://130.149.60.45/~farbmatrik o http://farbe.li.tu-berlin.de

iscrizione TUB: 20190801-MI52/MI52LONA.TXT /PS
Applicazione per la misura dell'output su display

TUB materiale: code=rh4ta



varietà dei colori: ordine casuale

4-003000-L0 MI520-1N, B2_02

colori acromatici: ordine casuale

4-003000-L0 MI520-2N, B2_03

colori del dispositivo: blu B_ criterio: né...neppure....

verdastro ... blu B_ ... rossastro

Codifica esadecimale per rgb_ e cmy_

0BF_ 07F_ 03F_ 00F_ 30F_ 70F_ B0F_ F40_ F80_ FC0_ FF0_ CF0_ 8F0_ 4F0_

4-003000-L0 MI521-1N, B2_10

colore del dispositivo: verde G_ criterio: né...neppure....

bluastro ... verde G_ ... giallastro

Codifica esadecimale per rgb_ e cmy_

0FB_ 0F7_ 0F3_ 0F0_ 3F0_ 7F0_ BF0_ F04_ F08_ F0C_ F0F_ C0F_ 80F_ 40F_

4-003000-L0 MI521-2N, B2_11

colori cromatici: ordine casuale

4-003000-L0 MI520-3N, B2_04

varietà dei colori: rgb_, cmy_ codifica

BBB_ 0FF_ 00F_ F0F_ 777_ 070_ 707_ F77_ 444_ F00_ FF0_ 0F0_ 888_ F8F_ 8F8_ 088_

07F_ 770_ 70F_ 333_ 0F7_ F70_ F07_ 077_ F80_ 88F_ 8F0_ CCC_ F08_ 08F_ 0F8_ F88_

000_ F00_ 7FF_ FF7_ FF0_ 007_ 700_ FFF_ FFF_ 0FF_ 800_ 008_ 00F_ FF8_ 8FF_ 000_

4-003000-L0 MI520-4N, B2_05

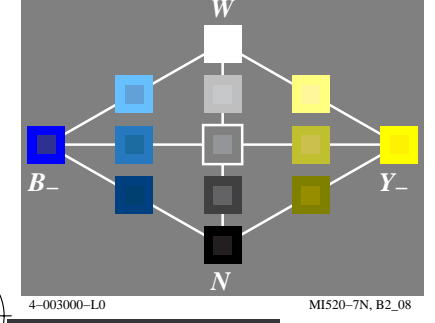
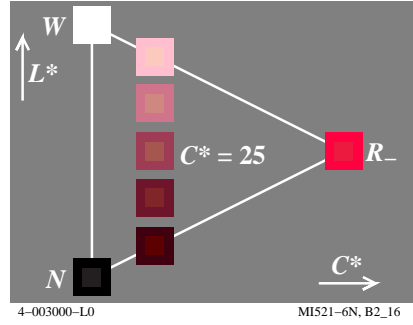
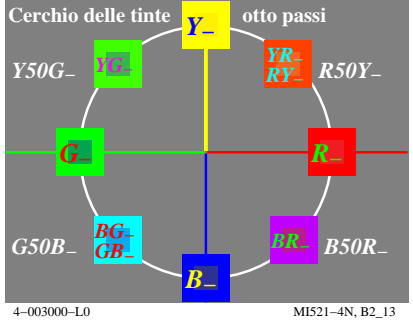
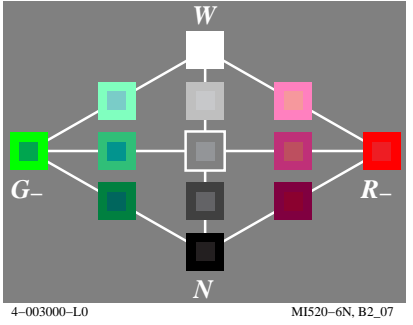
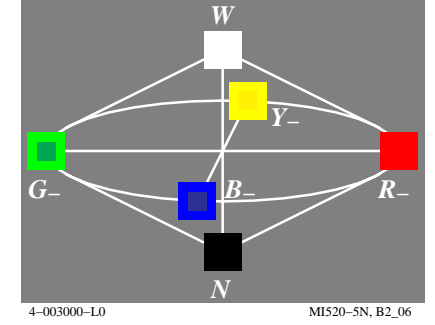
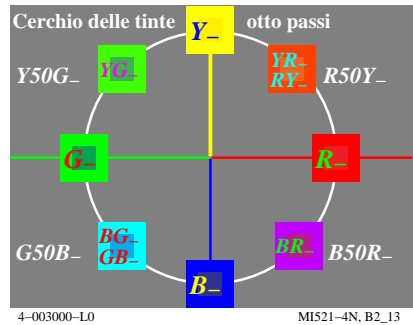
colore del dispositivo: rosso R_ criterio: né...neppure....

bluastro ... rosso R_ ... giallastro

Codifica esadecimale per rgb_ e cmy_

F0B_ F07_ F03_ F00_ F30_ F70_ FB0_ 0F4_ 0F8_ 0FC_ 0FF_ 0CF_ 08F_ 04F_

4-003000-L0 MI521-3N, B2_12



colore del dispositivo: giallo Y_ criterio: né...neppure....

verdastro ... giallo Y_ ... rossastro

Codifica esadecimale per rgb_ e cmy_

9F0_ BF0_ DF0_ FF0_ FD0_ FB0_ F90_ 60F_ 40F_ 20F_ 00F_ 02F_ 04F_ 06F_

4-003000-L0 MI520-8N, B2_09

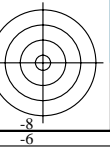
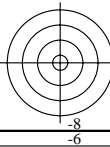
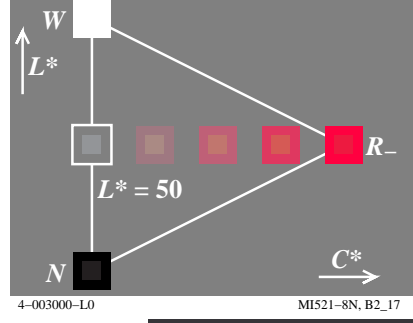
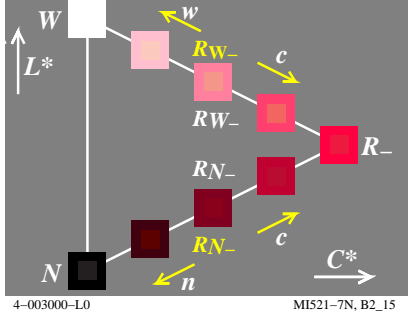
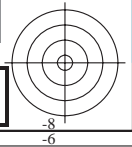
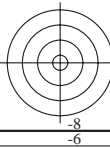
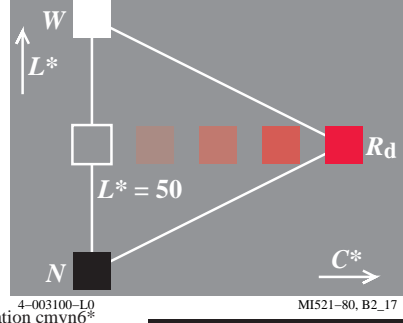
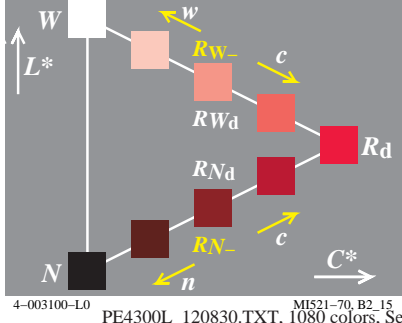
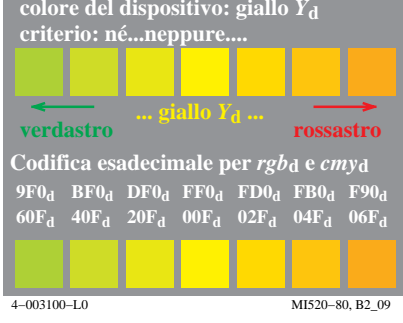
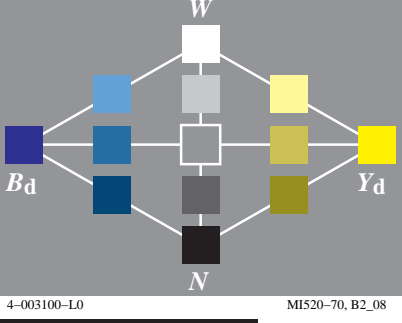
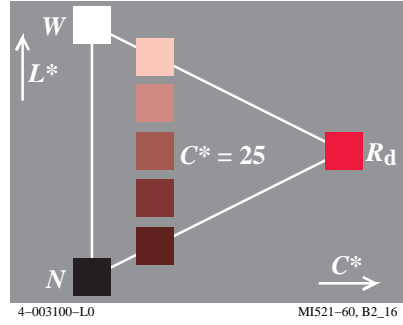
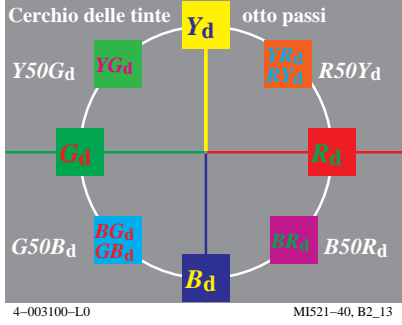
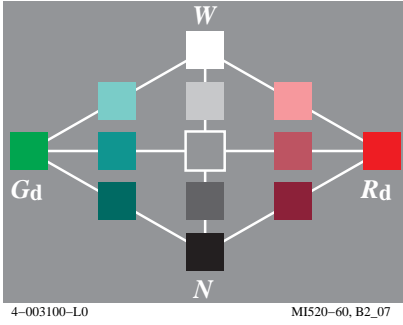
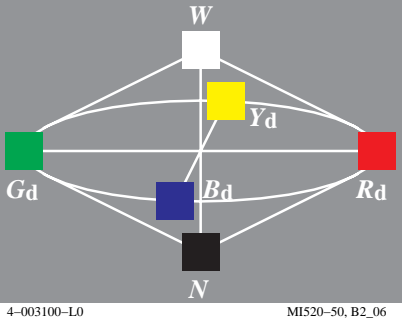
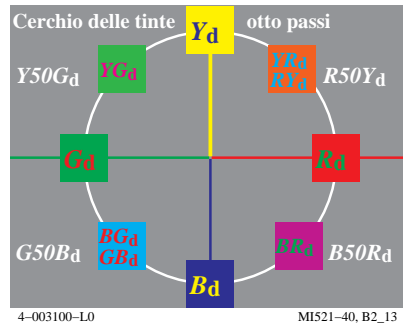
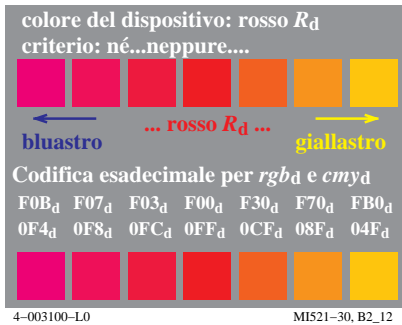
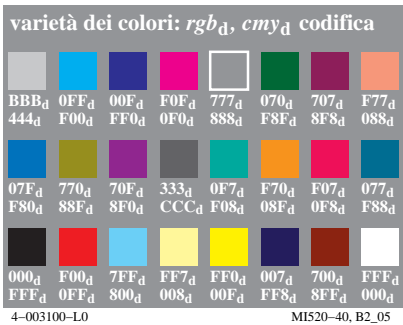
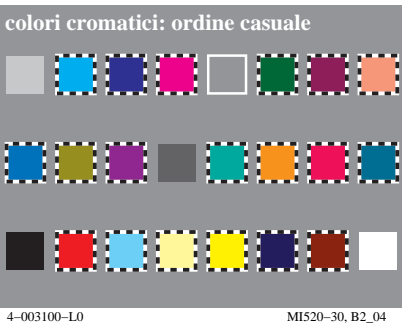
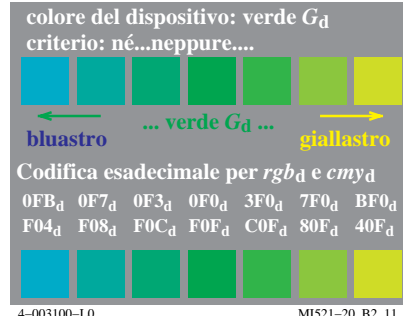
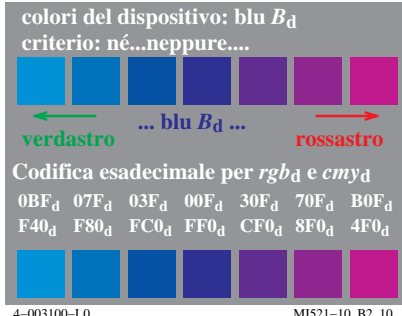
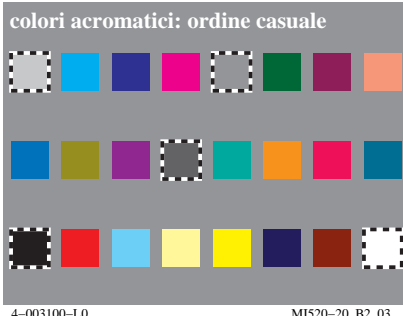
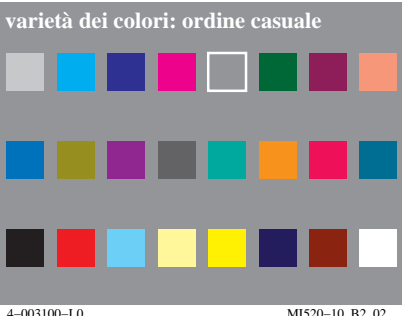


Grafico TUB-MI52; Grafica computerizzata e colorimetria
Serie di immagini MI52, 3D=0, de=0
Input: rgb/cmyk -> rgb/cmyk
Output: nessun cambiamento

vedi file simili: http://farbe.li.tu-berlin.de/MI52/MI52.HTM
http://130.149.60.45/~farbmatrik o http://farbe.li.tu-berlin.de

iscrizione TUB: 20190801-MI52/MI52L0NA.TXT /PS
Applicazione per la misura dell'output su display, nessuna separazione

TUB materiale: code=rh4ta



http://farbe.li.tu-berlin.de/MI52/MI52LONA.TXT /.PS; inizio dell'output
N: nessuna linearizzazione 3D (OL) nel file (F) o PS-startup (S), pagine 1/2

vedi file simili: http://farbe.li.tu-berlin.de/MI52/MI52.HTM
http://130.149.60.45/~farbmatrik o http://farbe.li.tu-berlin.de

iscrizione TUB: 20190801-MI52/MI52LONA.TXT /.PS
Applicazione per la misura dell'output su display

TUB materiale: code=rh4ta

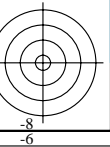
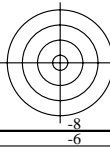
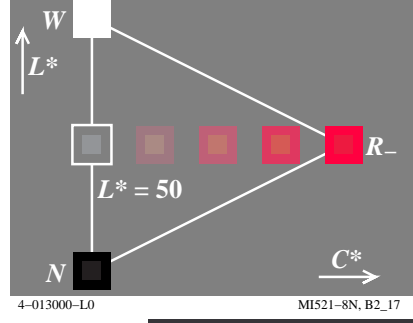
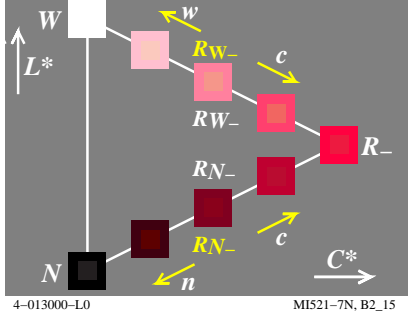
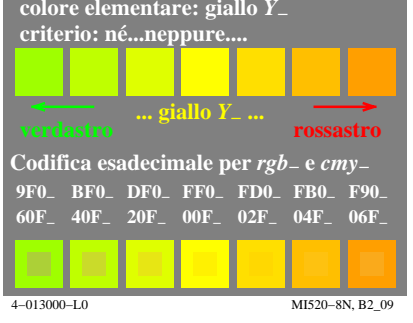
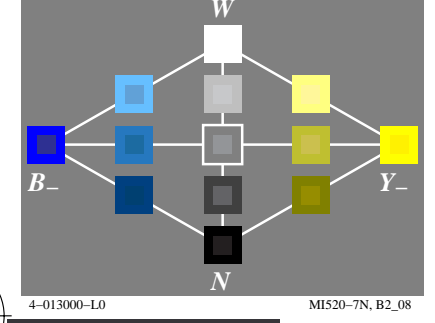
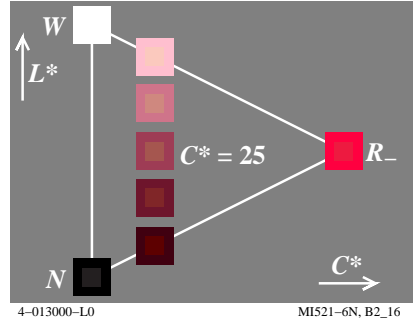
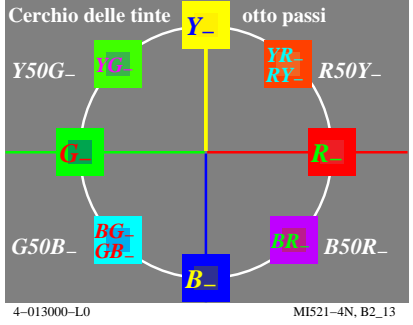
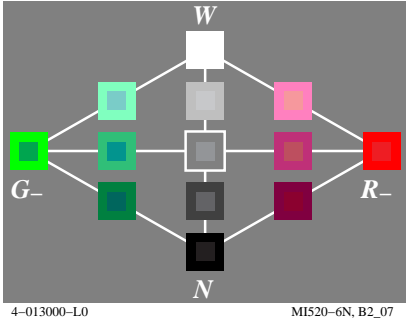
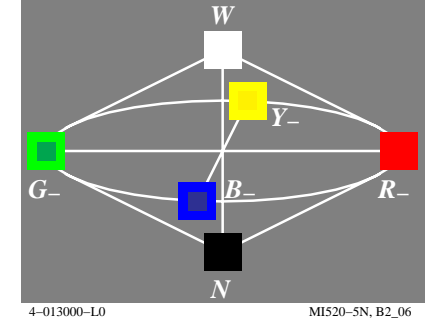
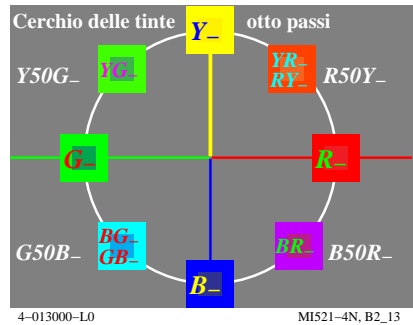
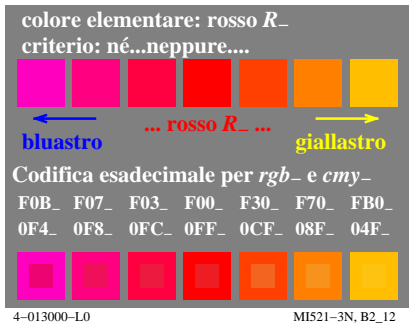
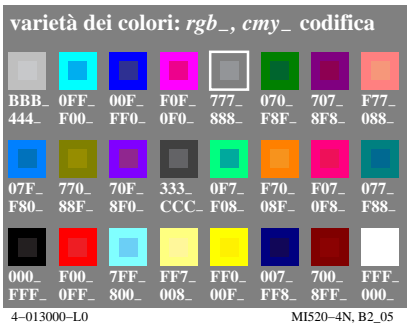
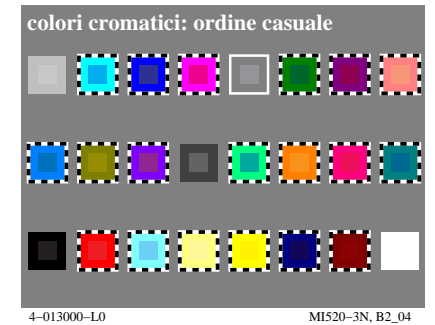
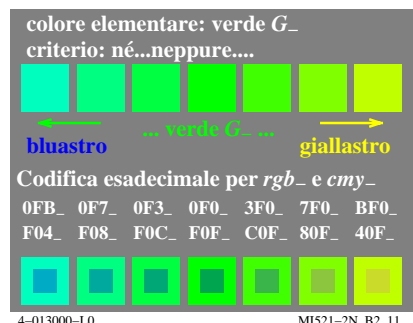
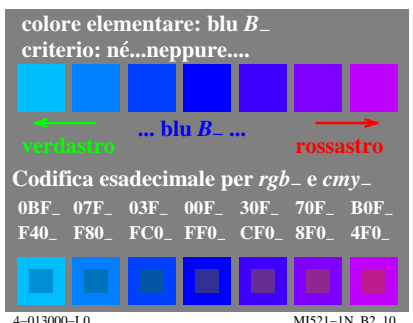
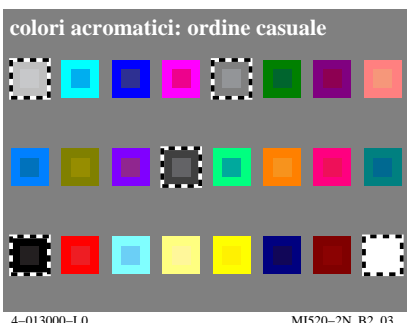
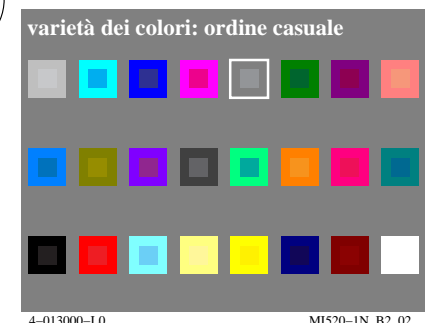
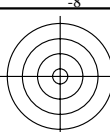


Grafico TUB-MI52; Grafica computerizzata e colorimetria
Serie di immagini MI52, 3D=0, de=1

Input: rgb/cmyk -> rgb/cmyk
Output: nessun cambiamento

vedi file simili: http://farbe.li.tu-berlin.de/MI52/MI52.HTM
http://130.149.60.45/~farbmatrik o http://farbe.li.tu-berlin.de

iscrizione TUB: 20190801-MI52/MI52L0NA.TXT /.PS
Applicazione per la misura dell'output su display, nessuna separazione

TUB materiale: code=rh4ta



varietà dei colori: ordine casuale

4-013100-L0 MI520-11, B2_02

colori acromatici: ordine casuale

4-013100-L0 MI520-21, B2_03

colore elementare: blu B_e
criterio: né...neppure....

← verdastro ... blu B_e ... rossastro →

Codifica esadecimale per rgb_e e cmy_e

0BF_e 07F_e 03F_e 00F_e 30F_e 70F_e B0F_e
F40_e F80_e FC0_e FF0_e CF0_e 8F0_e 4F0_e

4-013100-L0 MI521-11, B2_10

colore elementare: verde G_e
criterio: né...neppure....

← bluastro ... verde G_e ... giallastro →

Codifica esadecimale per rgb_e e cmy_e

0FB_e 0F7_e 0F3_e 0F0_e 3F0_e 7F0_e BF0_e
F04_e F08_e F0C_e F0F_e C0F_e 80F_e 40F_e

4-013100-L0 MI521-21, B2_11

colori cromatici: ordine casuale

4-013100-L0 MI520-31, B2_04

varietà dei colori: rgb_e, cmy_e codifica

BBB_e 0FB_e 05F_e 60F_e 777_e 070_e 307_e F79_e
444_e F04_e FA0_e 9F0_e 888_e F8F_e CF8_e 086_e

0CF_e 760_e 00F_e 333_e 0F7_e F50_e F0F_e 075_e
F30_e 89F_e FF0_e CCC_e F08_e 0AF_e 0F0_e F8A_e

000_e F03_e 7FD_e FE7_e FD0_e 027_e 701_e FFF_e
FFF_e 0F0_e 802_e 018_e 02F_e FD8_e 8FE_e 000_e

4-013100-L0 MI520-41, B2_05

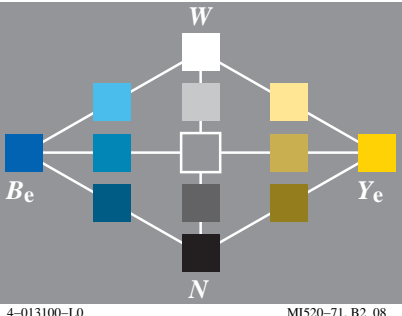
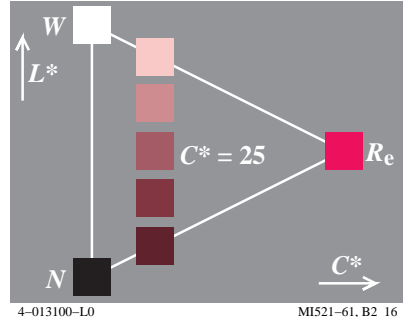
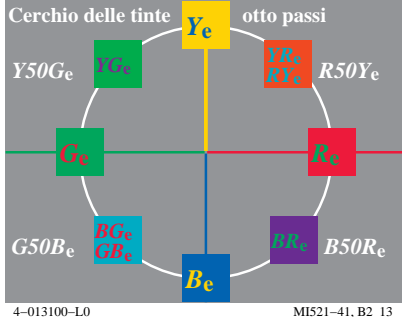
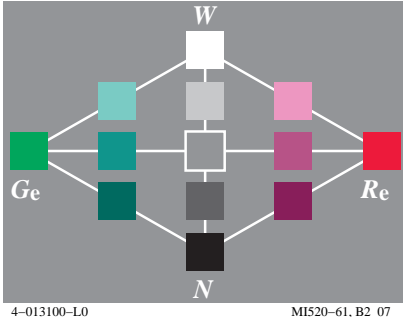
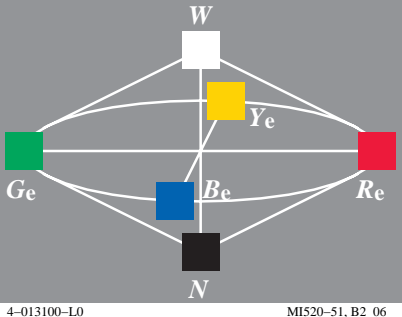
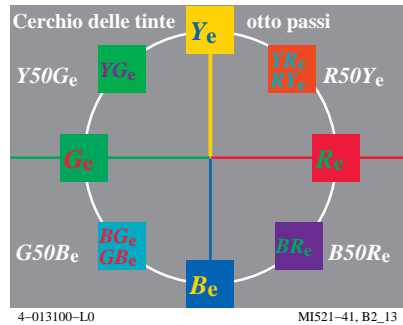
colore elementare: rosso R_e
criterio: né...neppure....

← bluastro ... rosso R_e ... giallastro →

Codifica esadecimale per rgb_e e cmy_e

F0B_e F07_e F03_e F00_e F30_e F70_e FB0_e
0F4_e 0F8_e 0FC_e 0FF_e 0CF_e 08F_e 04F_e

4-013100-L0 MI521-31, B2_12



colore elementare: giallo Y_e
criterio: né...neppure....

← verdastro ... giallo Y_e ... rossastro →

Codifica esadecimale per rgb_e e cmy_e

9F0_e BF0_e DF0_e FF0_e FD0_e FB0_e F90_e
60F_e 40F_e 20F_e 00F_e 02F_e 04F_e 06F_e

4-013100-L0 MI520-81, B2_09

