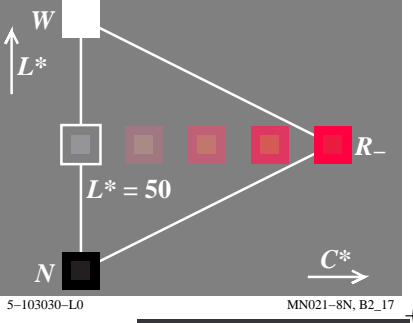
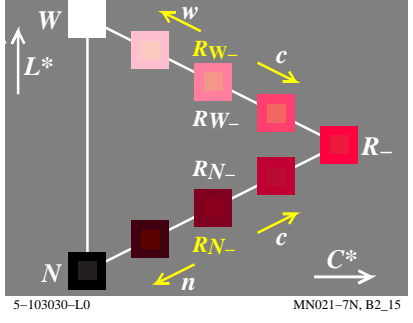
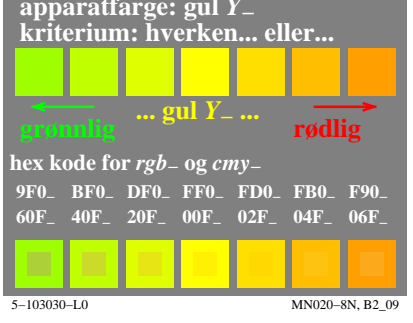
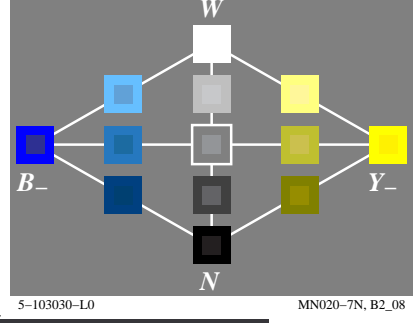
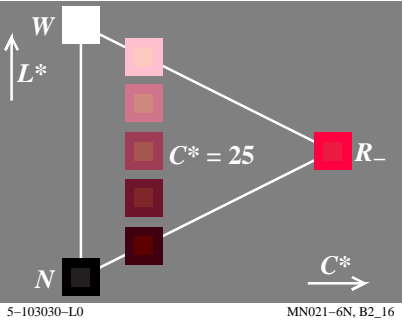
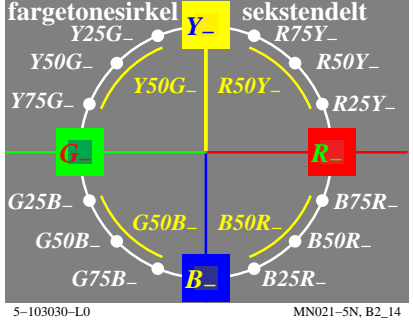
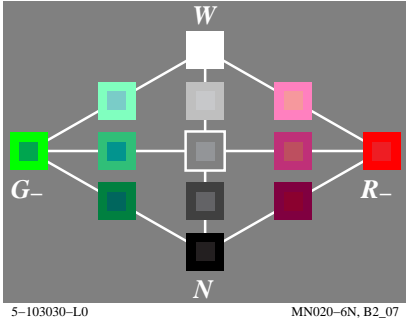
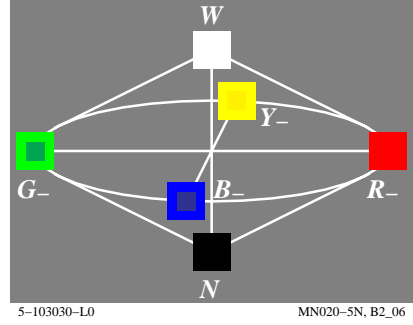
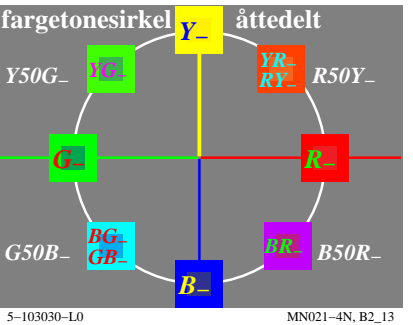
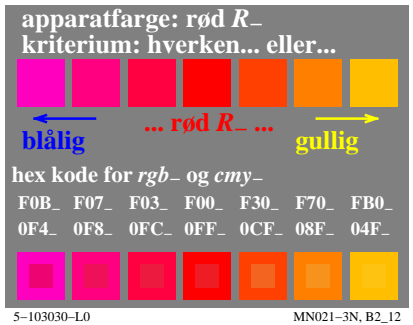
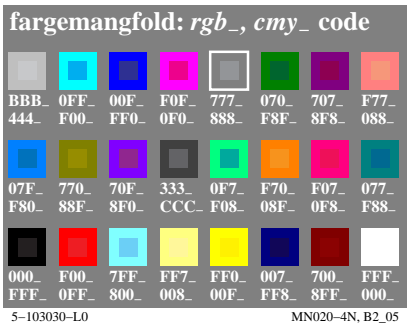
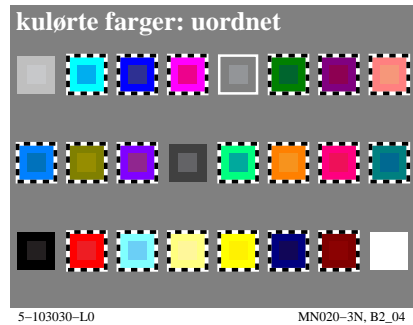
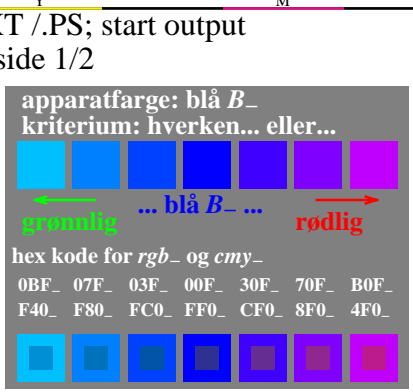
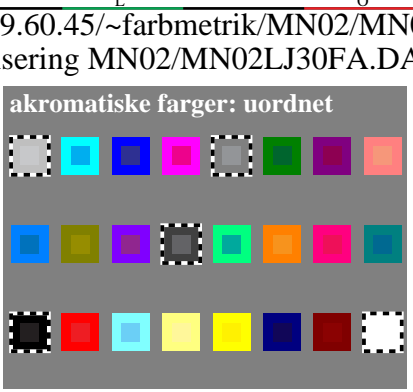
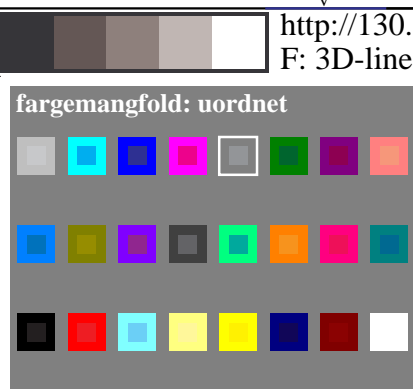
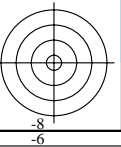
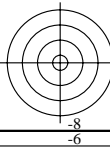
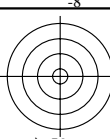


se lignende filer: <http://130.149.60.45/~farbmetrik/MN02/MN02.HTM>  
teknisk informasjon: <http://www.ps.bam.de> eller <http://130.149.60.45/~farbmetrik>

TUB registrering: 20150701-MN02/MN02L0FA.TXT /PS  
anvendelse for måling av display output

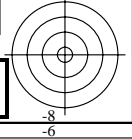
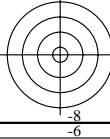
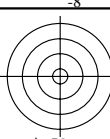
TUB materiell: code=rh4ta



se lignende filer: <http://130.149.60.45/~farbmetrik/MN02/MN02L0FA.TXT> /PS  
teknisk informasjon: <http://www.ps.bam.de> eller <http://130.149.60.45/~farbmetrik>

TUB registrering: 20150701-MN02/MN02L0FA.TXT /PS  
anvendelse for måling av display output, ingen separasjon

TUB materiell: code=rh4ta



**fargemangfold: uordnet**

5-103130-L0 MN020-12, B2\_02

**akromatiske farger: uordnet**

5-103130-L0 MN020-22, B2\_03

**apparatfarge: blå  $B_d$**   
kriterium: hverken... eller...

hex kode for  $rgb_{dd}$  og  $cmy_{dd}$   
0CF<sub>dd</sub> 07F<sub>dd</sub> 03F<sub>dd</sub> 00F<sub>dd</sub> 30F<sub>dd</sub> 80F<sub>dd</sub> C0F<sub>dd</sub>  
F30<sub>dd</sub> F80<sub>dd</sub> FC0<sub>dd</sub> FF0<sub>dd</sub> CF0<sub>dd</sub> 7F0<sub>dd</sub> 3F0<sub>dd</sub>

5-103130-L0 MN021-12, B2\_10

**apparatfarge: grønn  $G_d$**   
kriterium: hverken... eller...

hex kode for  $rgb_{dd}$  og  $cmy_{dd}$   
0FC<sub>dd</sub> 0F7<sub>dd</sub> 0F3<sub>dd</sub> 0F0<sub>dd</sub> 3F0<sub>dd</sub> 8F0<sub>dd</sub> CF0<sub>dd</sub>  
F03<sub>dd</sub> F08<sub>dd</sub> F0C<sub>dd</sub> F0F<sub>dd</sub> C0F<sub>dd</sub> 70F<sub>dd</sub> 30F<sub>dd</sub>

5-103130-L0 MN021-22, B2\_11

**kulørte farger: uordnet**

5-103130-L0 MN020-32, B2\_04

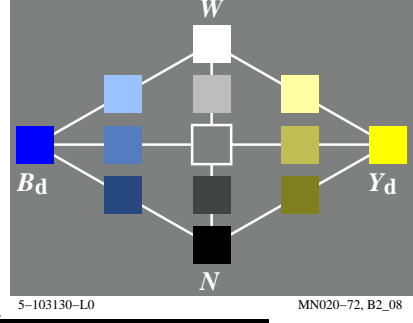
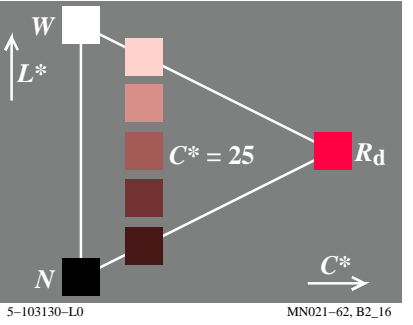
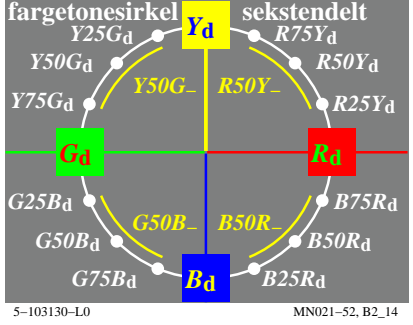
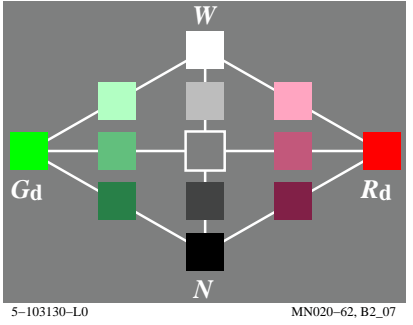
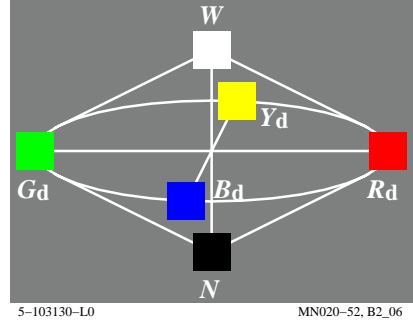
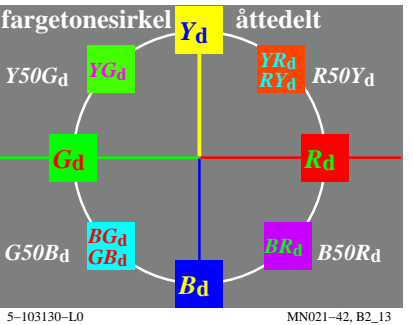
**fargemangfold:  $rgb_{dd}$ ,  $cmy_{dd}$  code**

5-103130-L0 MN020-42, B2\_05

**apparatfarge: rød  $R_d$**   
kriterium: hverken... eller...

hex kode for  $rgb_{dd}$  og  $cmy_{dd}$   
F0CF<sub>dd</sub> F07<sub>dd</sub> F03<sub>dd</sub> F00<sub>dd</sub> F30<sub>dd</sub> F80<sub>dd</sub> FC0<sub>dd</sub>  
0F3<sub>dd</sub> 0F8<sub>dd</sub> 0FC<sub>dd</sub> 0FF<sub>dd</sub> 0CF<sub>dd</sub> 07F<sub>dd</sub> 03F<sub>dd</sub>

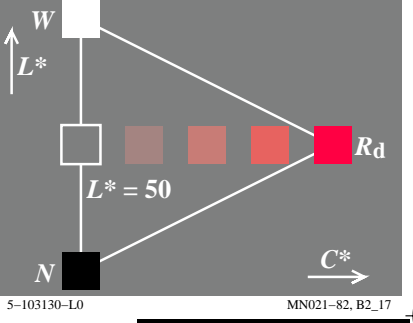
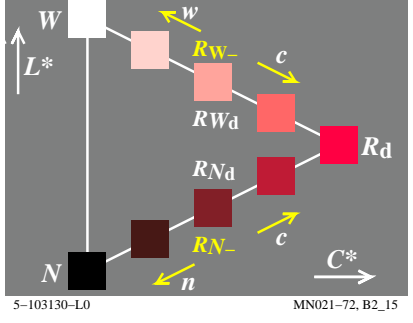
5-103130-L0 MN021-32, B2\_12



**apparatfarge: gul  $Y_d$**   
kriterium: hverken... eller...

hex kode for  $rgb_{dd}$  og  $cmy_{dd}$   
AF0<sub>dd</sub> CF0<sub>dd</sub> EF0<sub>dd</sub> FF0<sub>dd</sub> FE0<sub>dd</sub> FC0<sub>dd</sub> FA0<sub>dd</sub>  
50F<sub>dd</sub> 30F<sub>dd</sub> 10F<sub>dd</sub> 00F<sub>dd</sub> 01F<sub>dd</sub> 03F<sub>dd</sub> 05F<sub>dd</sub>

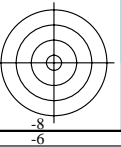
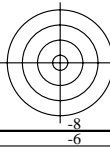
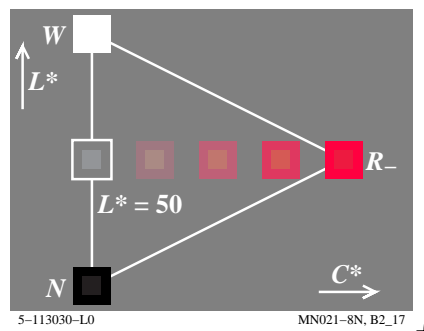
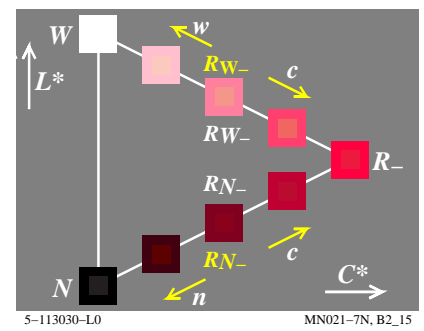
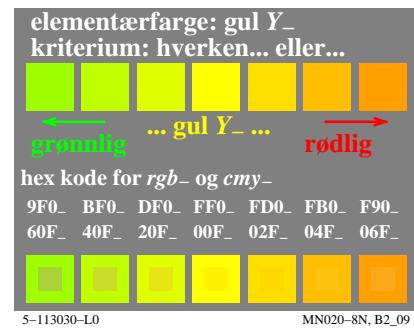
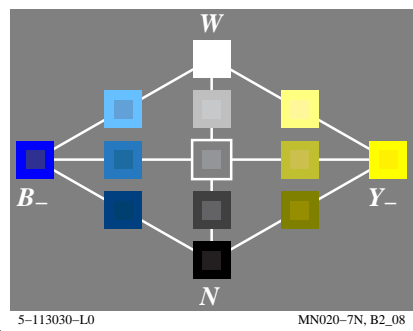
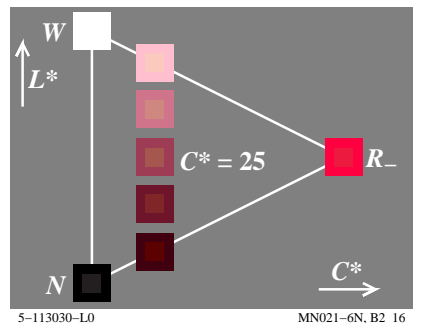
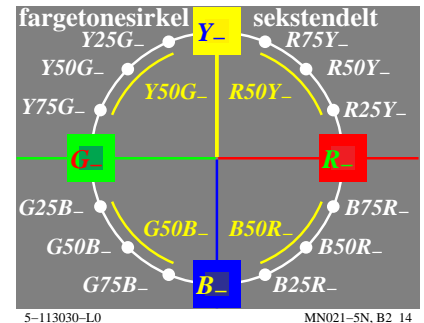
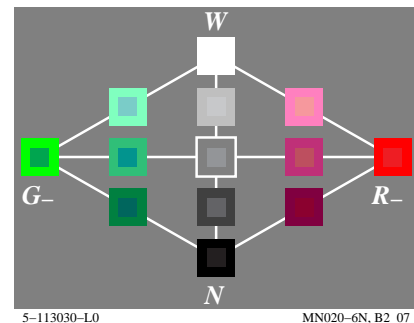
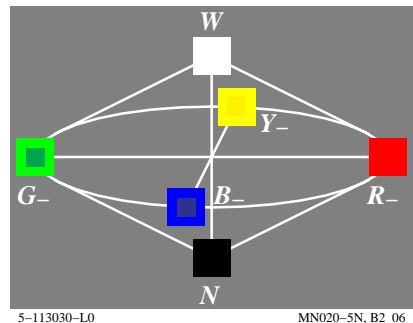
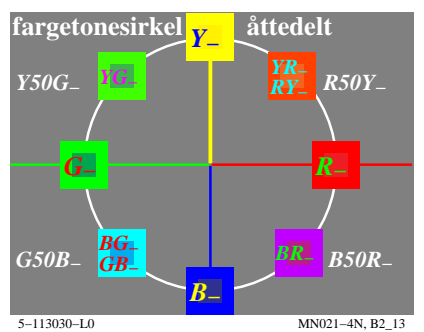
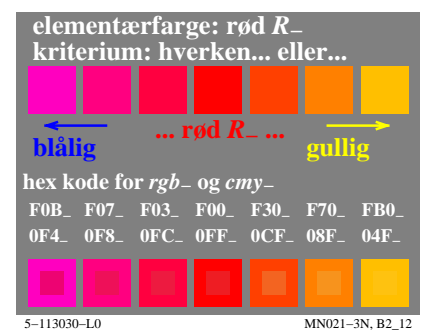
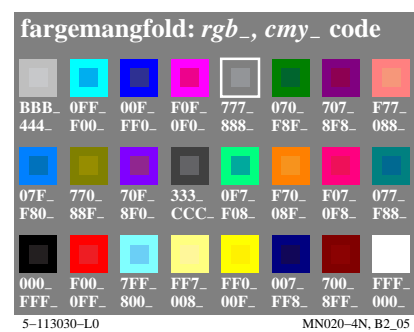
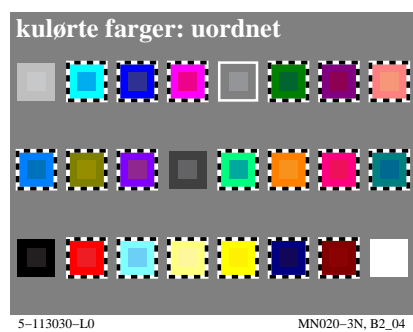
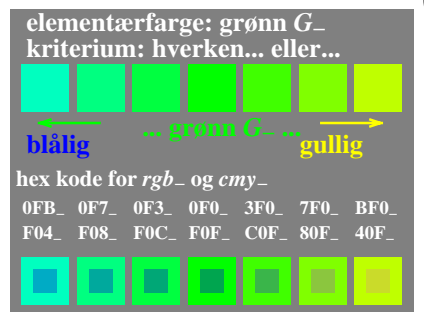
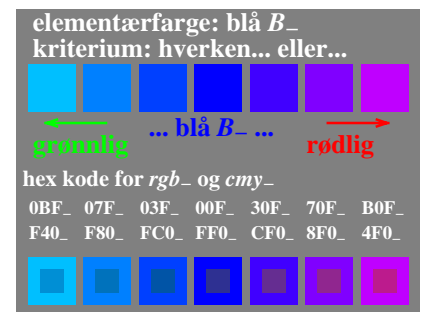
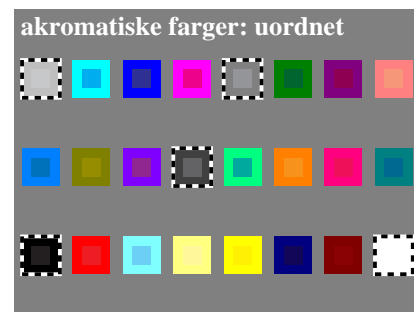
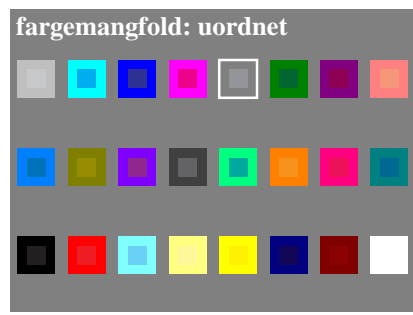
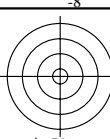
5-103130-L0 MN020-82, B2\_09



se lignende filer: <http://130.149.60.45/~farbmetrik/MN02/MN02.HTM>  
teknisk informasjon: <http://www.ps.bam.de> eller <http://130.149.60.45/~farbmetrik>

TUB registrering: 20150701-MN02/MN02L0FA.TXT /PS  
anvendelse for måling av display output

TUB materiell: code=rh4ta



se lignende filer: <http://130.149.60.45/~farbmetrik/MN02/MN02.HTM>  
teknisk informasjon: <http://www.ps.bam.de> eller <http://130.149.60.45/~farbmetrik>

TUB registrering: 20150701-MN02/MN02L0FA.TXT /PS  
anvendelse for måling av display output, ingen separasjon

TUB materiell: code=rhadata

