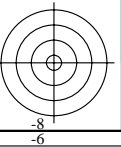
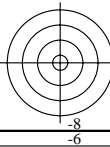
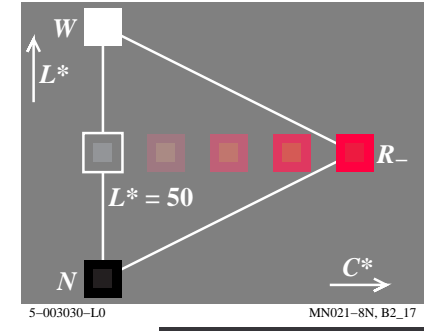
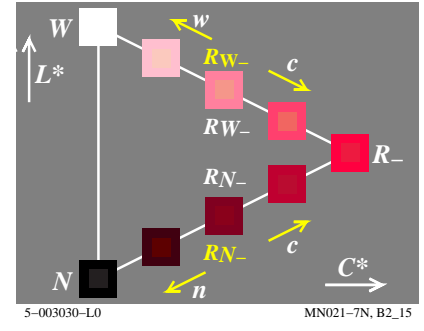
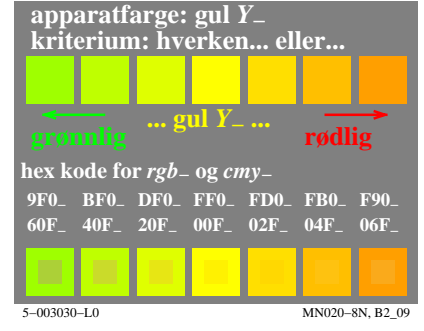
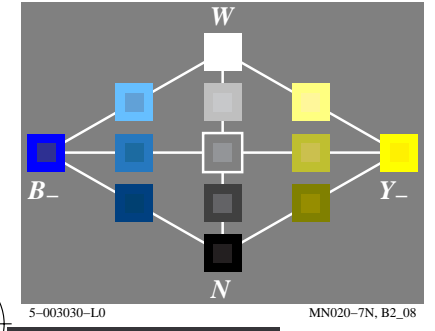
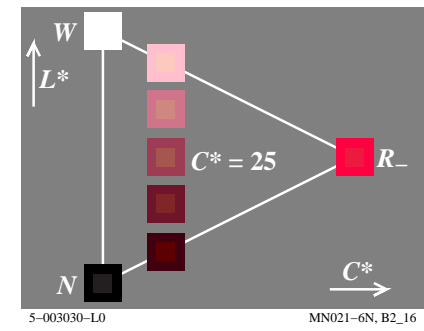
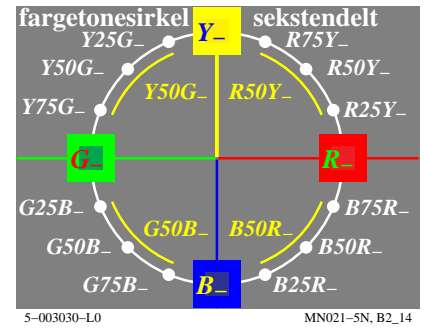
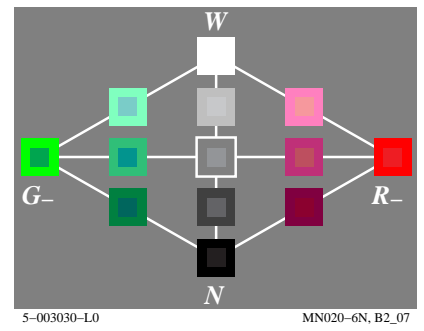
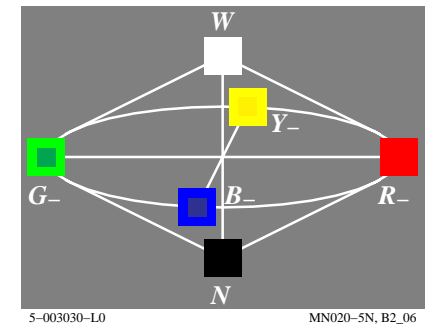
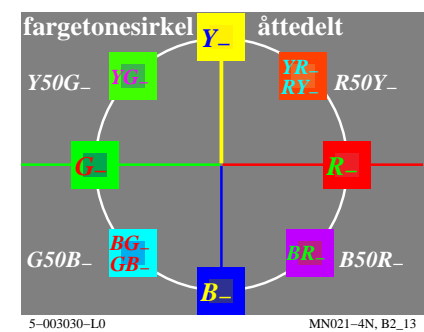
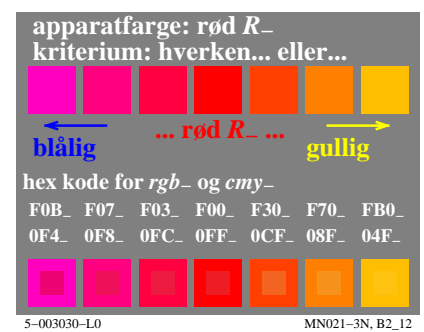
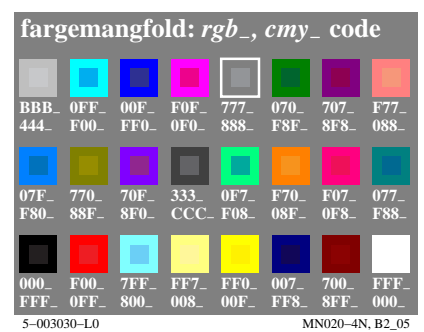
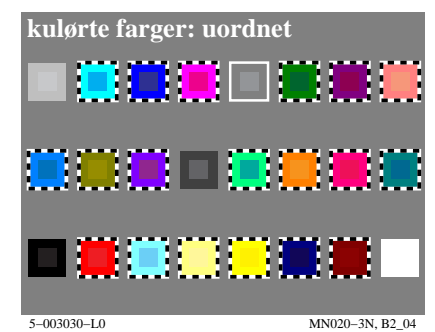
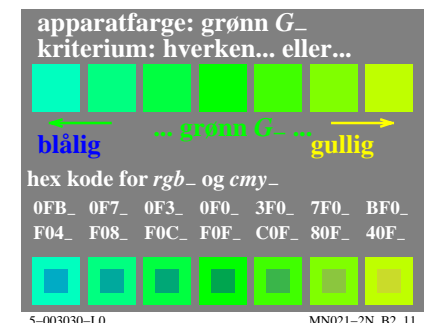
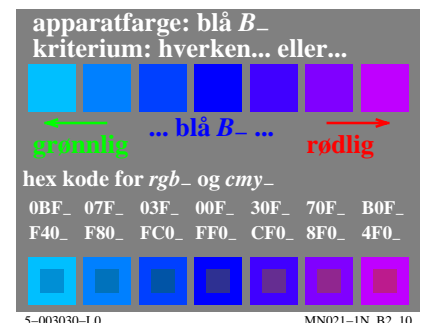
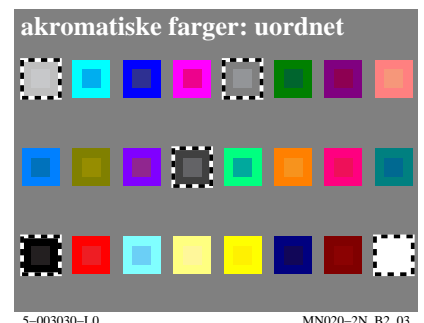
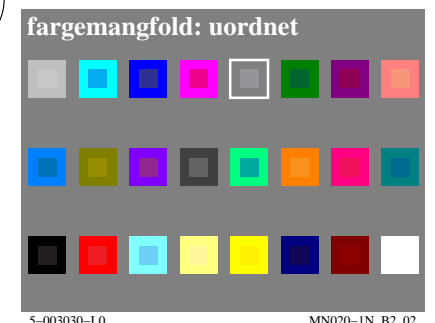
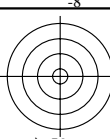


http://130.149.60.45/~farbmetrik/MN02/MN02L0NA.TXT /.PS; start output
N: ingen 3D-linearisering (OL) i fil (F) eller PS-startup (S), side 1/2

se lignende filer: <http://130.149.60.45/~farbmetrik/MN02/MN02.HTM>
teknisk informasjon: <http://www.ps.bam.de> eller <http://130.149.60.45/~farbmetrik>

TUB registrering: 20150701-MN02/MN02L0NA.TXT /.PS
anvendelse for måling av display output

TUB materiell: code=rh4ta



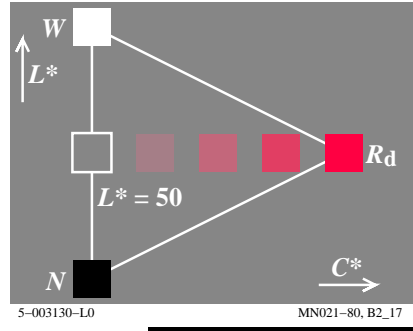
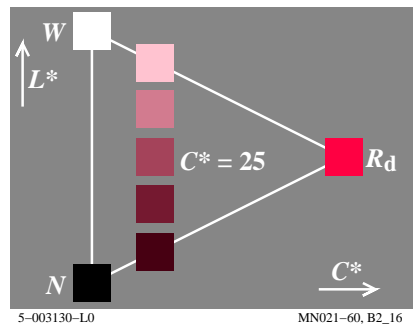
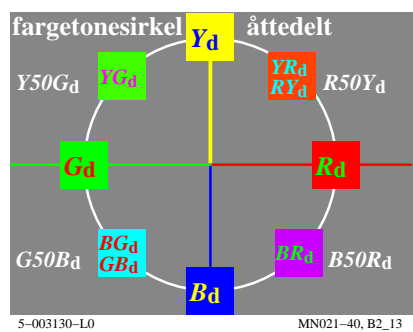
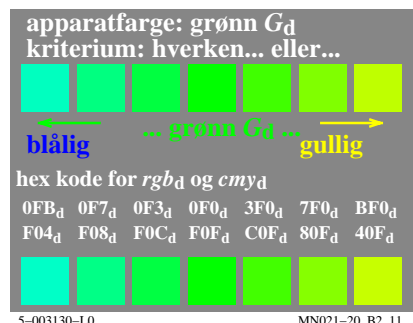
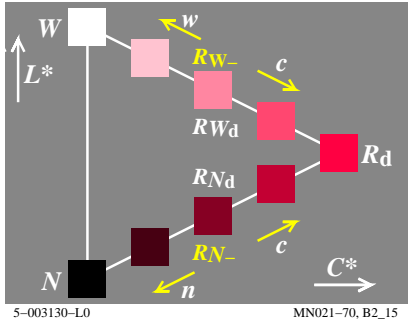
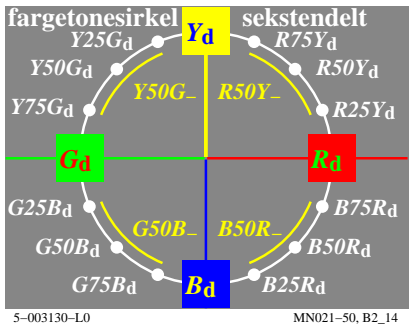
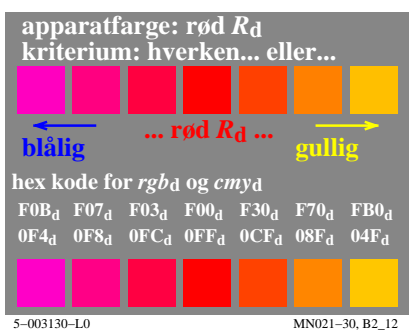
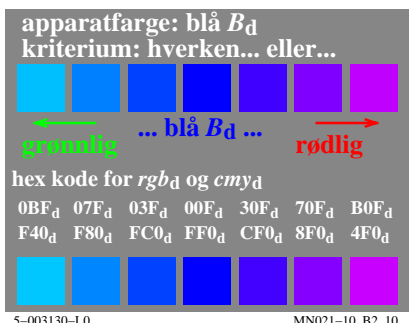
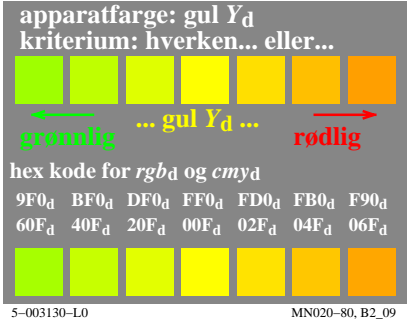
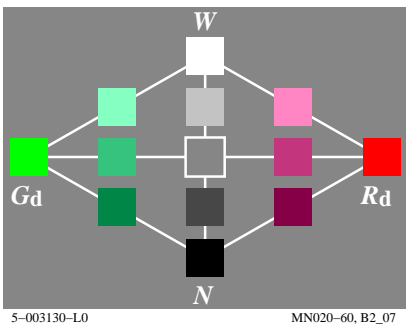
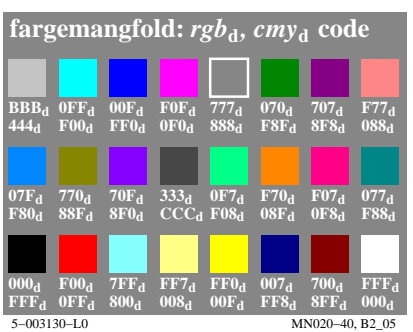
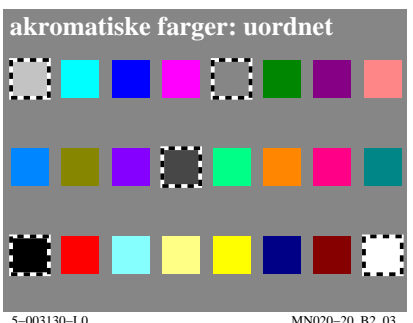
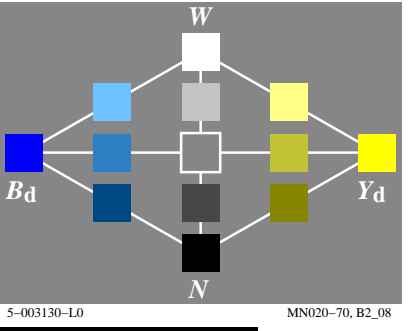
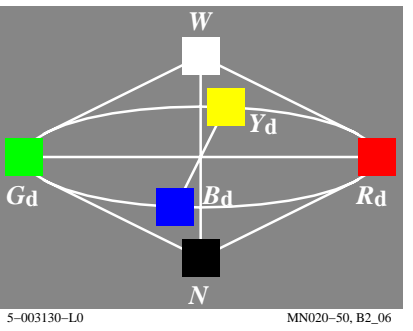
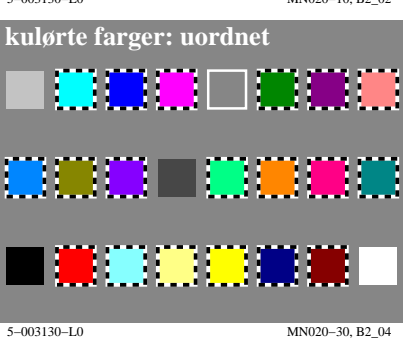
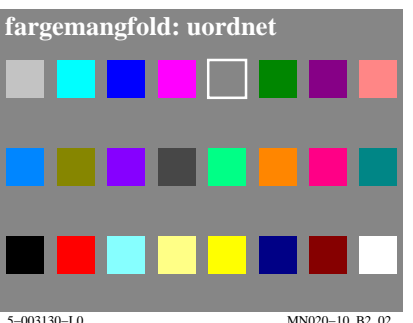
TUB-testplansje MN02; Computergrafikk og fargemetrikk
Bildeserie MN02, 3D=0, de=0

input: rgb/cmyk -> rgb/cmyk
output: ingen endring

se lignende filer: <http://130.149.60.45/~farbmetrik/MN02/MN02.HTM>
teknisk informasjon: <http://www.ps.bam.de> eller <http://130.149.60.45/~farbmetrik>

TUB registrering: 20150701-MN02/MN02L0NA.TXT / .PS
anvendelse for måling av display output, ingen separasjon

TUB materiell: code=rh4ta

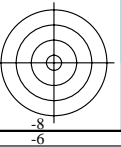
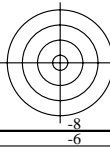
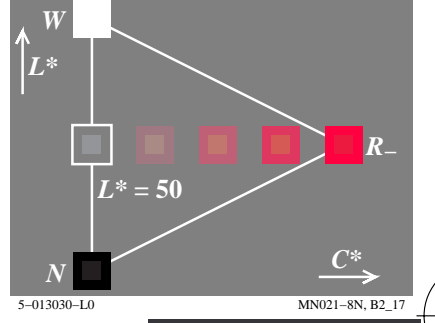
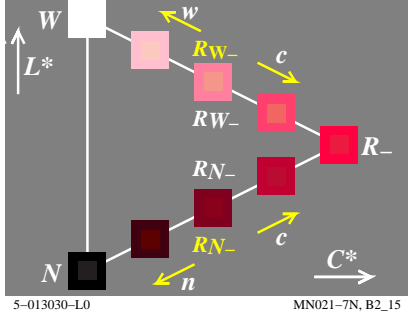
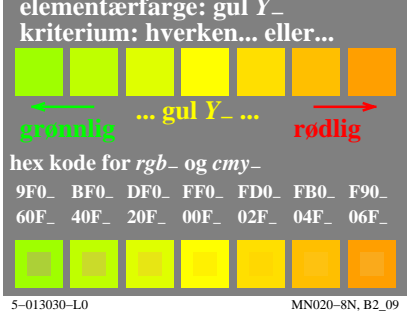
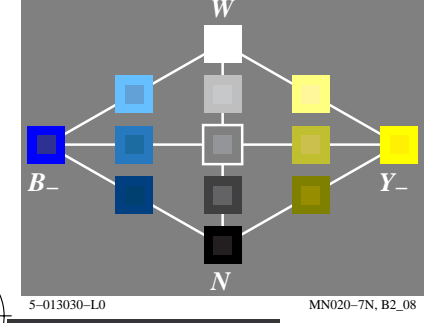
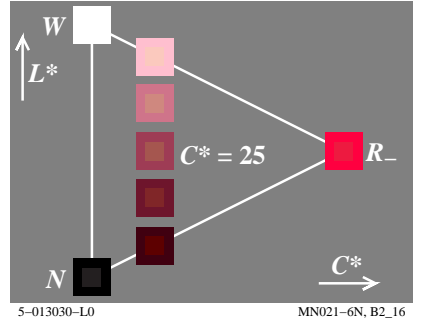
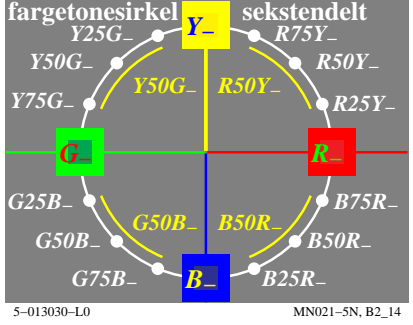
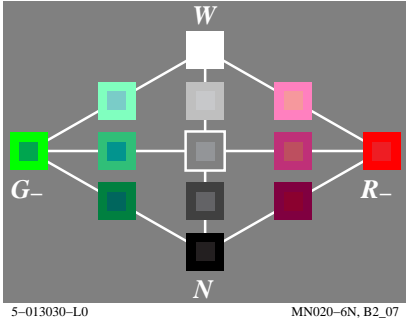
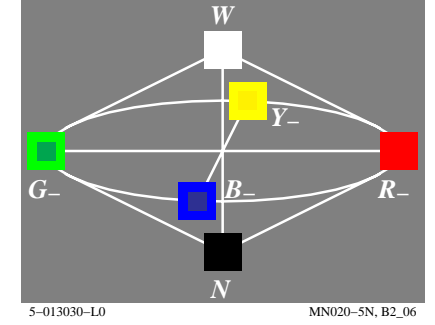
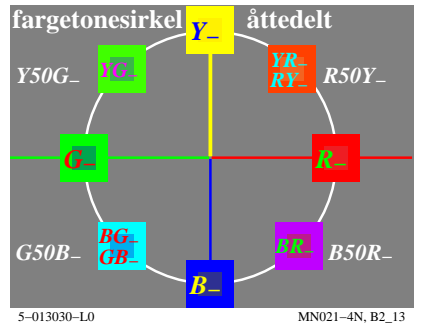
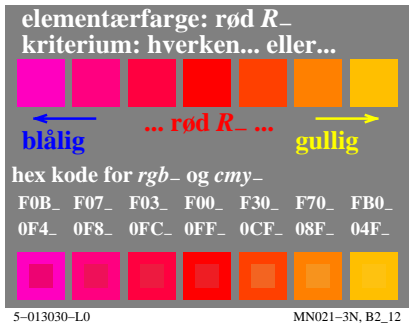
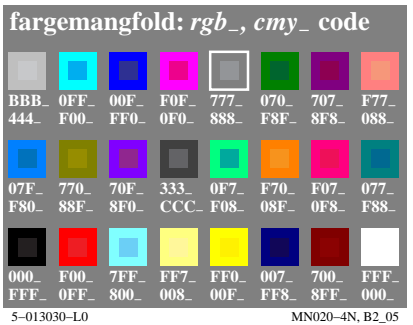
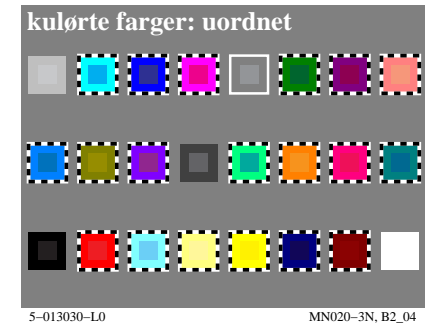
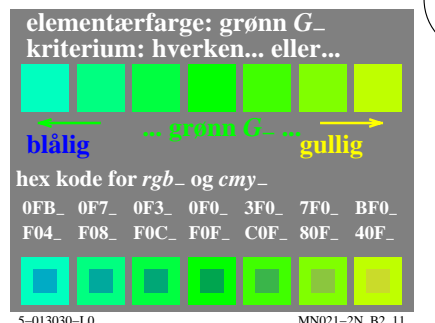
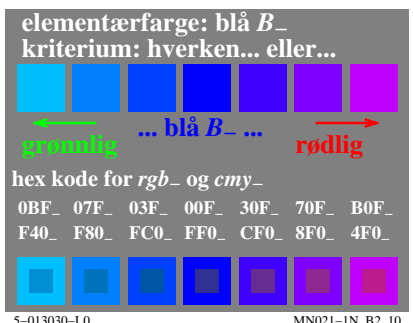
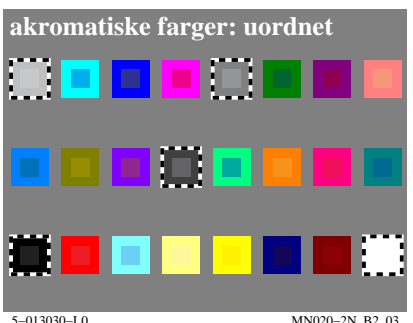
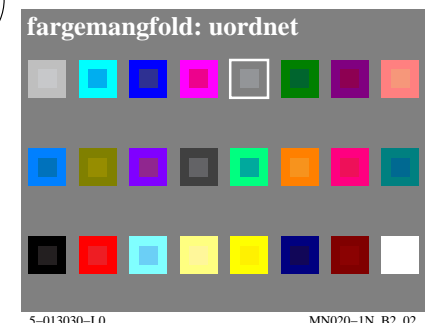
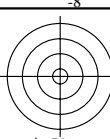


http://130.149.60.45/~farbmetrik/MN02/MN02L0NA.TXT /.PS; start output
N: ingen 3D-linearisering (OL) i fil (F) eller PS-startup (S), side 1/2

se lignende filer: <http://130.149.60.45/~farbmetrik/MN02/MN02.HTM>
teknisk informasjon: <http://www.ps.bam.de> eller <http://130.149.60.45/~farbmetrik>

TUB registrering: 20150701-MN02/MN02L0NA.TXT /.PS
anvendelse for måling av display output

TUB materiell: code=rh4ta



TUB-testplansje MN02; Computergrafikk og fargemetrikk
Bildeserie MN02, 3D=0, de=1

input: rgb/cmyk -> rgb/cmyk
output: ingen endring

se lignende filer: <http://130.149.60.45/~farbmetrik/MN02/MN02.HTM>
teknisk informasjon: <http://www.ps.bam.de> eller <http://130.149.60.45/~farbmetrik>

TUB registrering: 20150701-MN02/MN02L0NA.TXT /PS
anvendelse for måling av display output, ingen separasjon

TUB materiell: code=rh4ta

