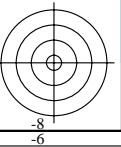
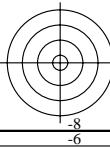
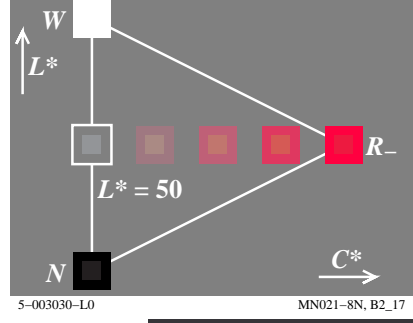
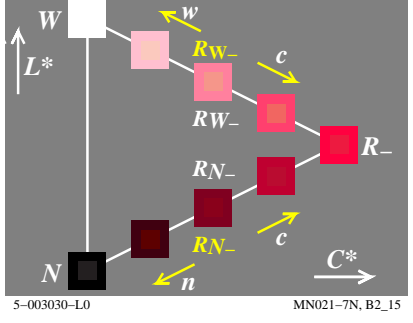
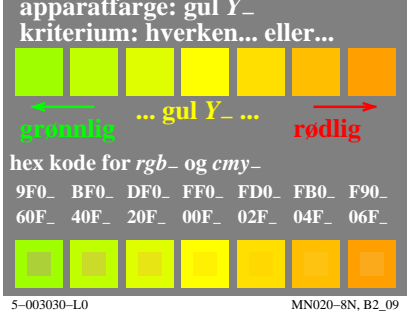
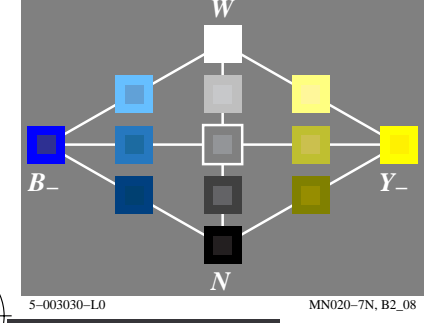
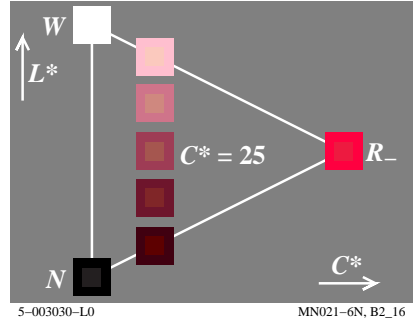
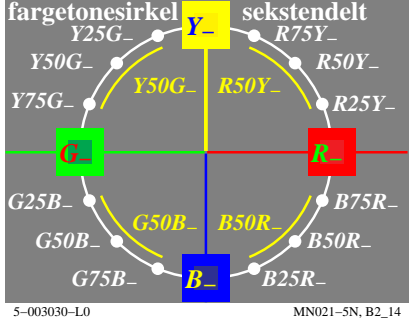
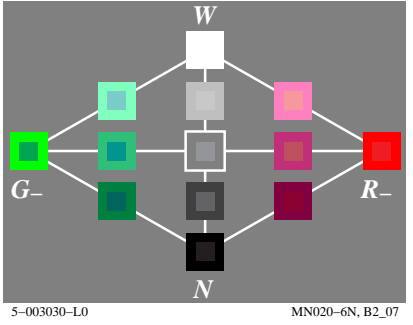
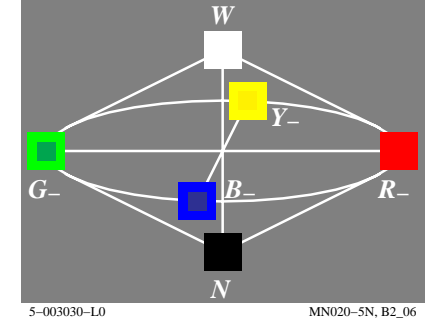
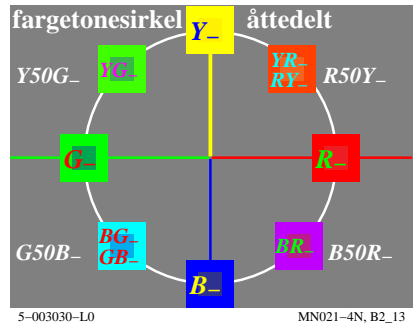
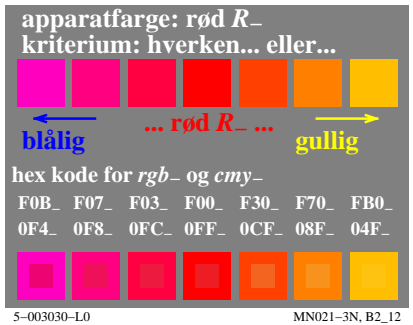
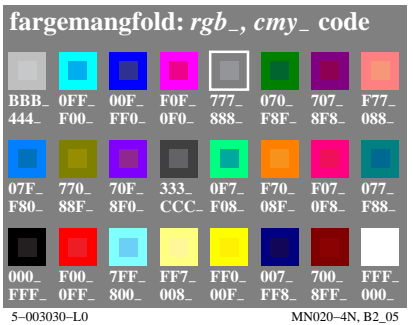
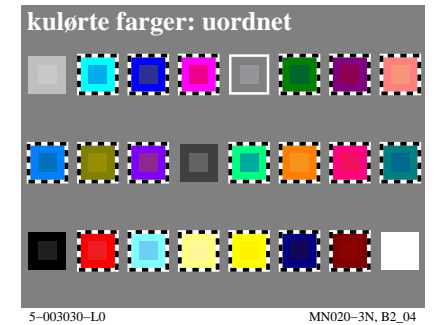
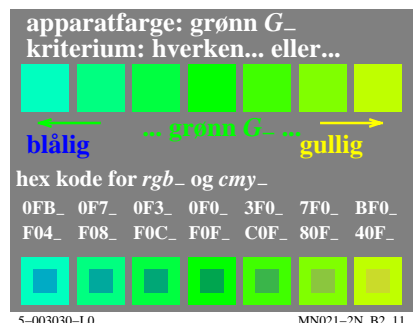
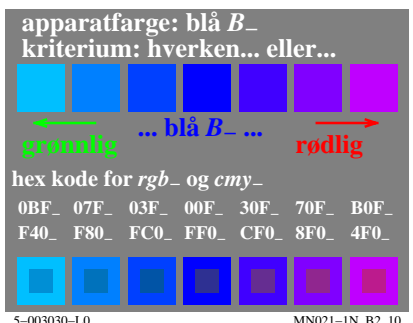
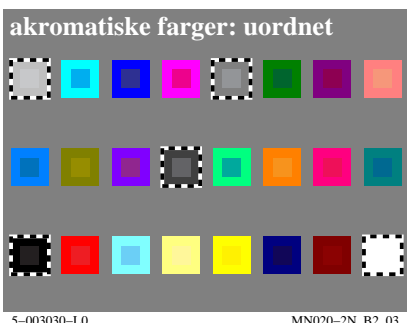
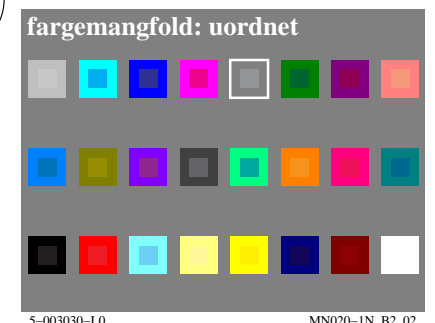
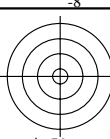


http://130.149.60.45/~farbmetrik/MN02/MN02L0NP.PDF /.PS; start output
N: ingen 3D-linearisering (OL) i fil (F) eller PS-startup (S), side 1/2

se lignende filer: <http://130.149.60.45/~farbmetrik/MN02/MN02.HTM>
teknisk informasjon: <http://www.ps.bam.de> eller <http://130.149.60.45/~farbmetrik>

TUB registrering: 20150701-MN02/MN02L0NP.PDF /.PS
anvendelse for måling av display output

TUB materiell: code=rh4ta



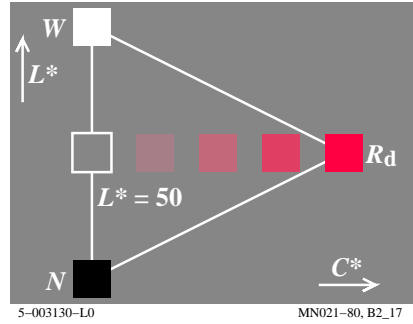
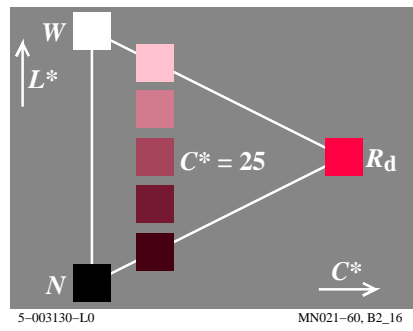
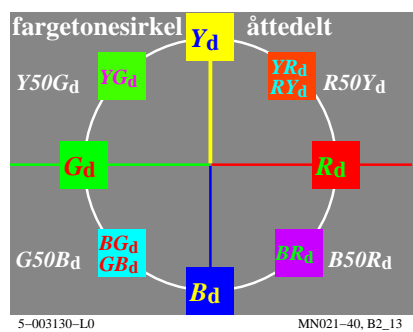
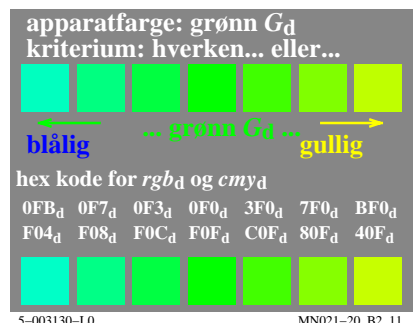
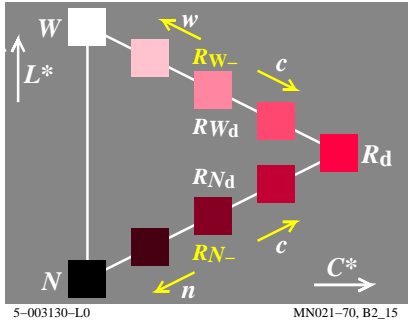
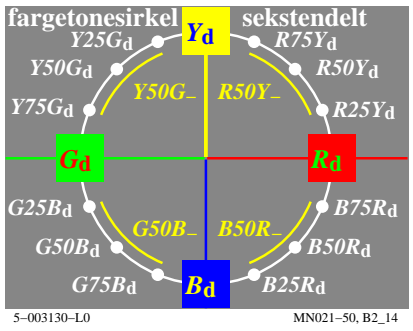
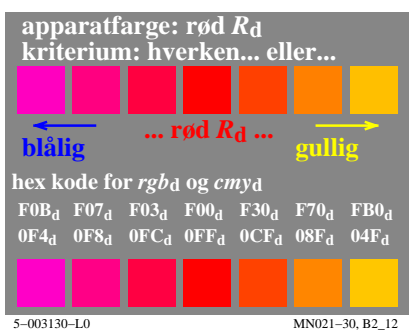
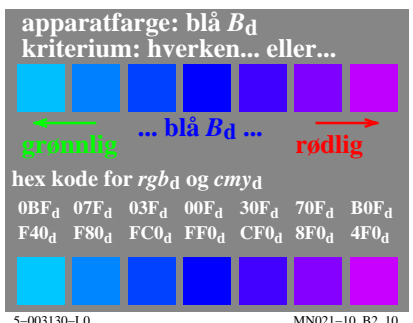
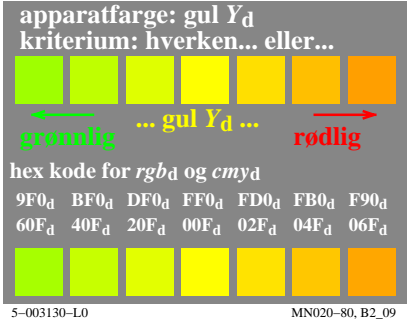
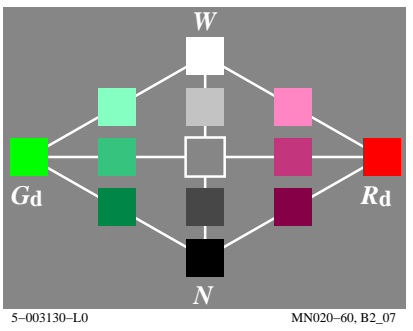
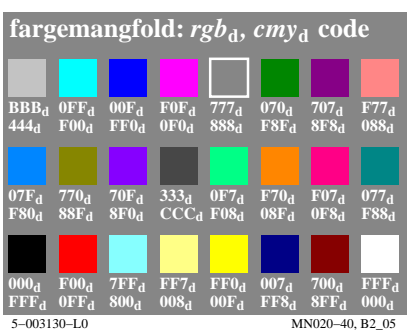
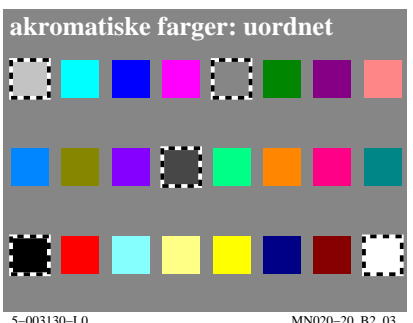
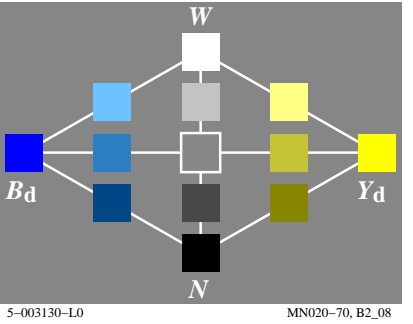
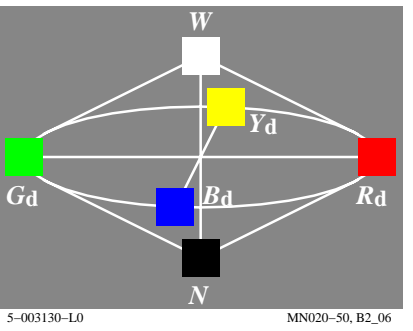
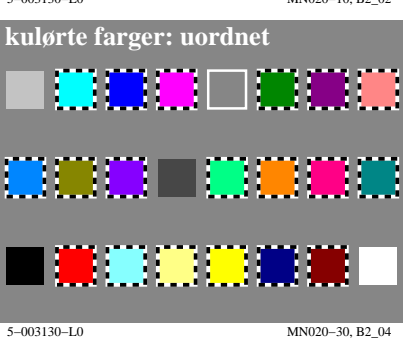
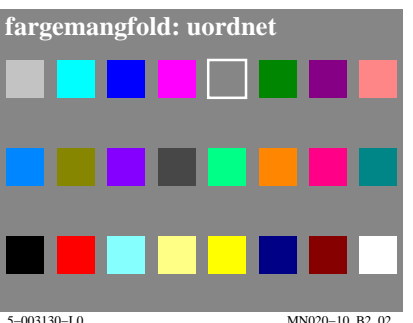
TUB-testplansje MN02; Computergrafikk og fargemetrikk
Bildeserie MN02, 3D=0, de=0

input: rgb/cmyk -> rgb/cmyk
output: ingen endring

se lignende filer: <http://130.149.60.45/~farbmetrik/MN02/MN02.HTM>
teknisk informasjon: <http://www.ps.bam.de> eller <http://130.149.60.45/~farbmetrik>

TUB registrering: 20150701-MN02/MN02L0NP.PDF /.PS
anvendelse for måling av display output, ingen separasjon

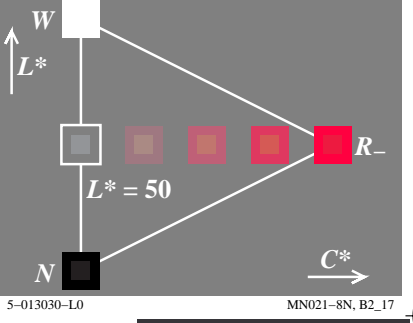
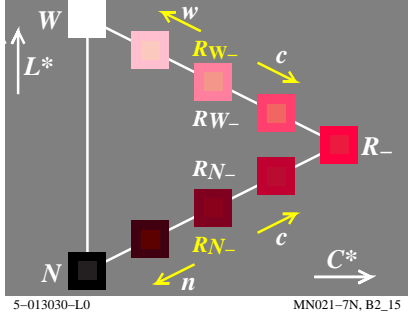
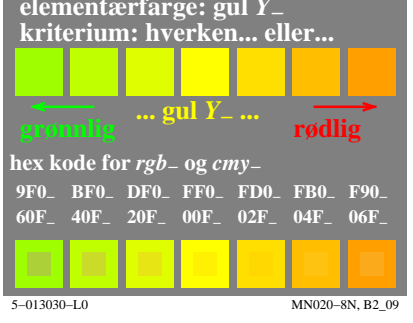
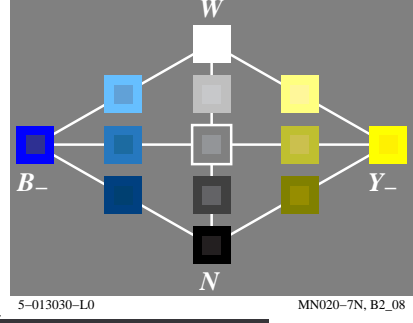
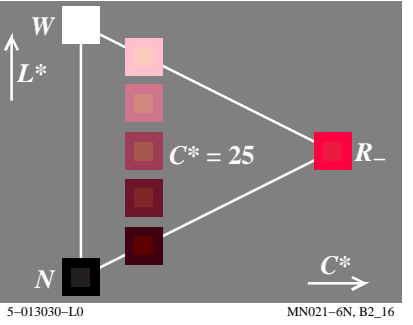
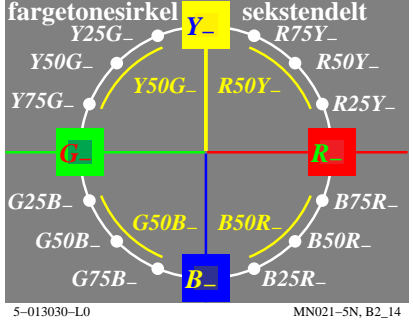
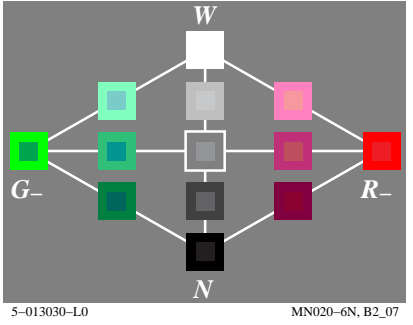
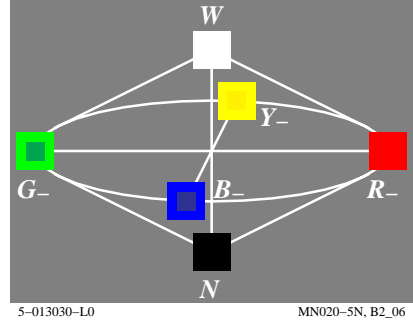
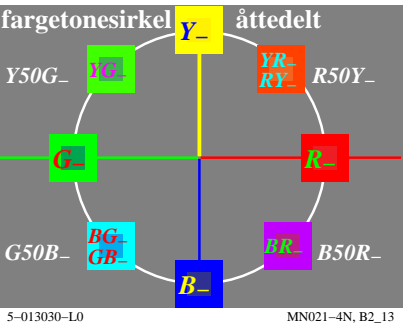
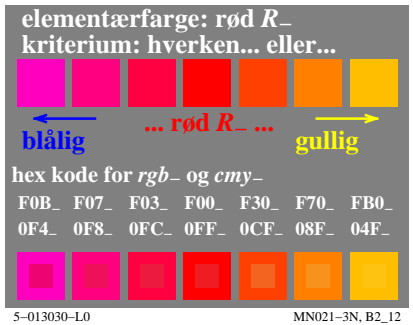
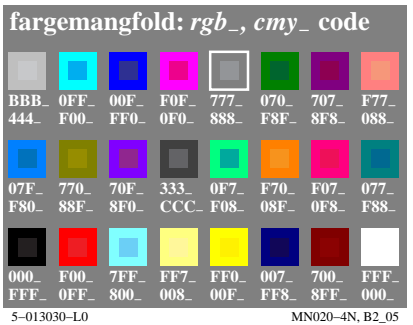
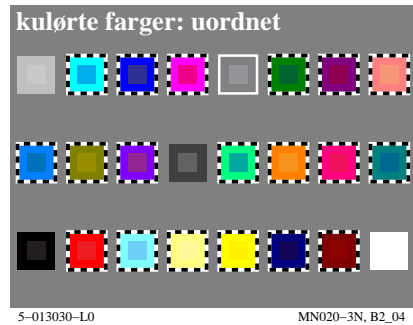
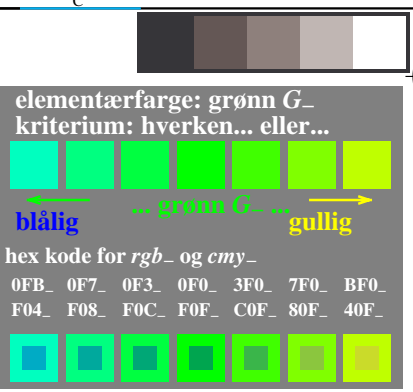
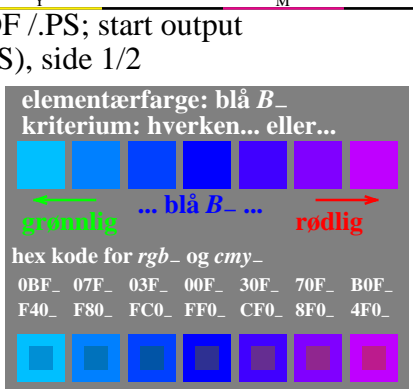
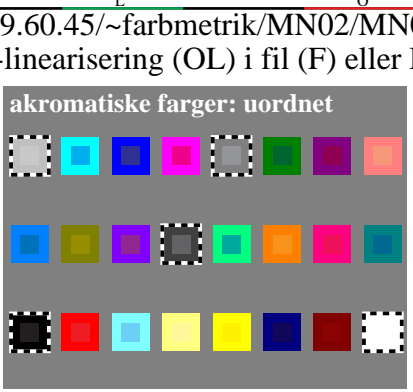
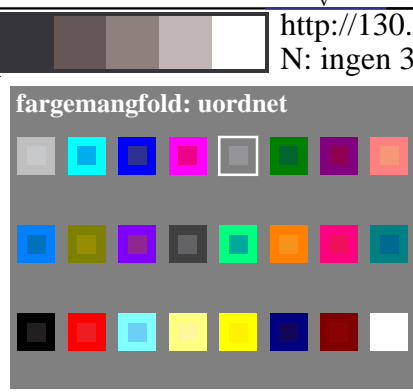
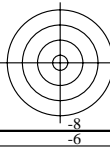
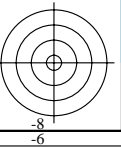
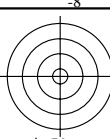
TUB materiell: code=rh4ta



se lignende filer: <http://130.149.60.45/~farbmetrik/MN02/MN02.HTM>
teknisk informasjon: <http://www.ps.bam.de> eller <http://130.149.60.45/~farbmetrik>

TUB registrering: 20150701-MN02/MN02L0NP.PDF /.PS
anvendelse for måling av display output

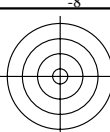
TUB materiell: code=rh4ta



se lignende filer: <http://130.149.60.45/~farbmetrik/MN02/MN02.HTM>
teknisk informasjon: <http://www.ps.bam.de> eller <http://130.149.60.45/~farbmetrik>

TUB registrering: 20150701-MN02/MN02L0NP.PDF /.PS
anvendelse for måling av display output, ingen separasjon

TUB materiell: code=rh4ta



fargemangfold: uordnet

5-013130-L0 MN020-11, B2_02

akromatiske farger: uordnet

5-013130-L0 MN020-21, B2_03

elementærfarge: blå B_e
kriterium: hverken... eller...

grønnlig ... blå B_e ... rødlig

hex kode for rgb_e og cmy_e
0BF_e 07F_e 03F_e 00F_e 30F_e 70F_e B0F_e
F40_e F80_e FC0_e FF0_e CF0_e 8F0_e 4F0_e

5-013130-L0 MN021-11, B2_10

elementærfarge: grønn G_e
kriterium: hverken... eller...

blålig ... grønn G_e ... gullig

hex kode for rgb_e og cmy_e
0FB_e 0F7_e 0F3_e 0F0_e 3F0_e 7F0_e BF0_e
F04_e F08_e F0C_e F0F_e C0F_e 80F_e 40F_e

5-013130-L0 MN021-21, B2_11

kulørte farger: uordnet

5-013130-L0 MN020-31, B2_04

fargemangfold: rgb_e , cmy_e code

BBB_e 0EF_e 09F_e F0F_e 777_e 075_e 707_e F7A_e
444_e F10_e F60_e 0F0_e 888_e F8A_e 8F8_e 085_e
0CF_e 760_e 04F_e 333_e 0FF_e F70_e F09_e 077_e
F30_e 89F_e FB0_e CCC_e F00_e 08F_e 0F6_e F88_e
000_e F04_e 7FF_e FE7_e FD0_e 047_e 702_e FFF_e
FFF_e 0FB_e 800_e 018_e 02F_e FB8_e 8FD_e 000_e

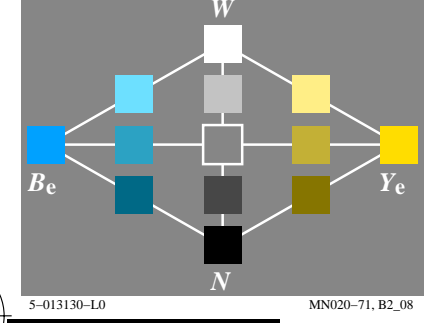
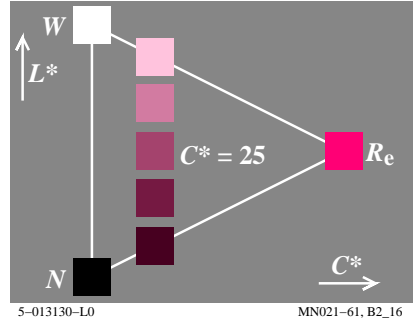
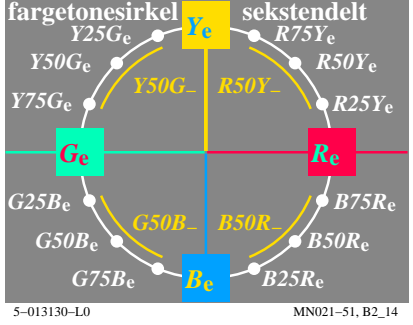
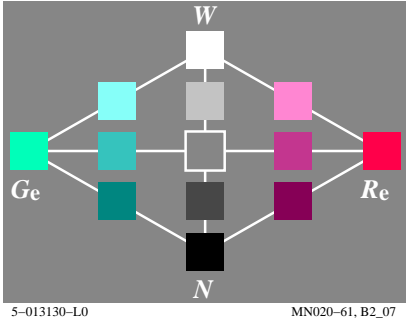
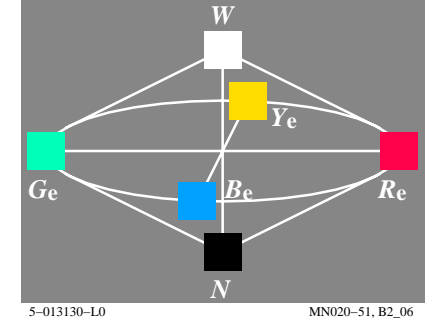
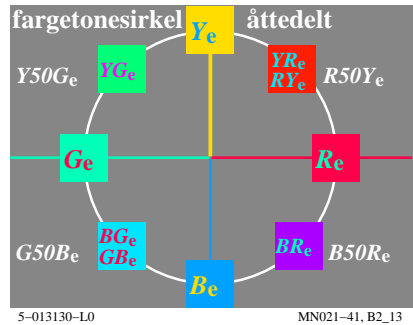
5-013130-L0 MN020-41, B2_05

elementærfarge: rød R_e
kriterium: hverken... eller...

blålig ... rød R_e ... gullig

hex kode for rgb_e og cmy_e
F0B_e F07_e F03_e F00_e F30_e F70_e FB0_e
0F4_e 0F8_e 0FC_e 0FF_e 0CF_e 08F_e 04F_e

5-013130-L0 MN021-31, B2_12



elementærfarge: gul Y_e
kriterium: hverken... eller...

grønnlig ... gul Y_e ... rødlig

hex kode for rgb_e og cmy_e
9F0_e BF0_e DF0_e FF0_e FD0_e FB0_e F90_e
60F_e 40F_e 20F_e 00F_e 02F_e 04F_e 06F_e

5-013130-L0 MN020-81, B2_09

