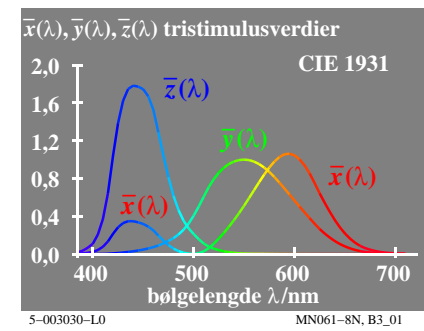
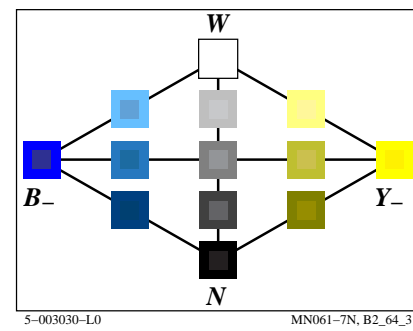
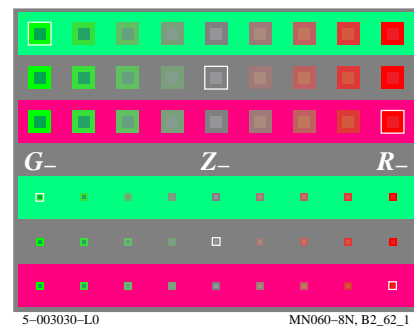
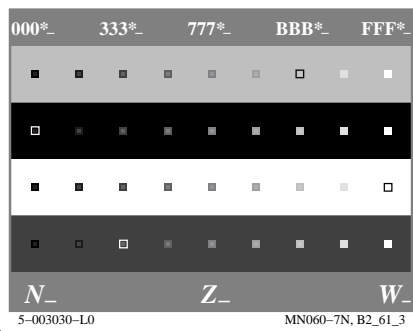
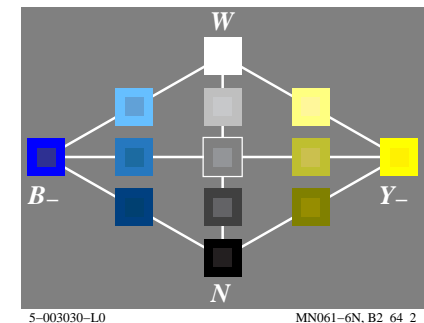
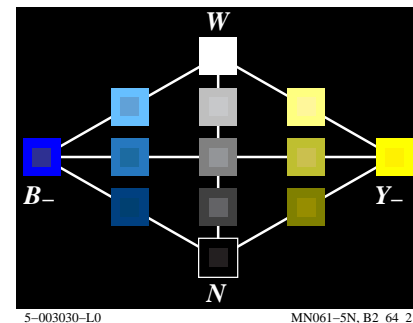
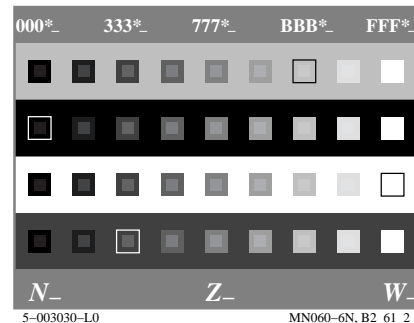
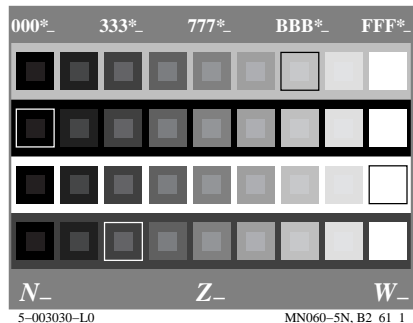
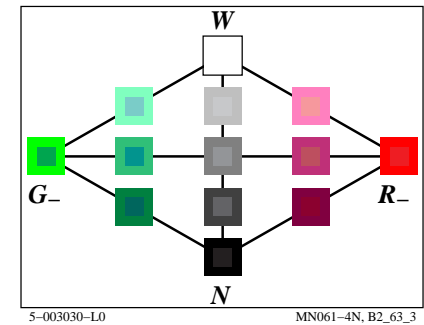
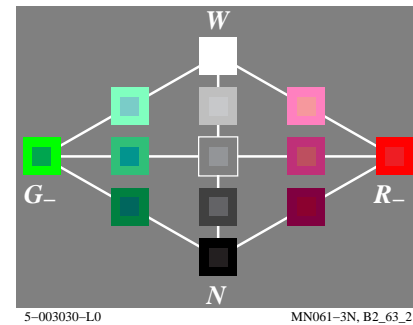
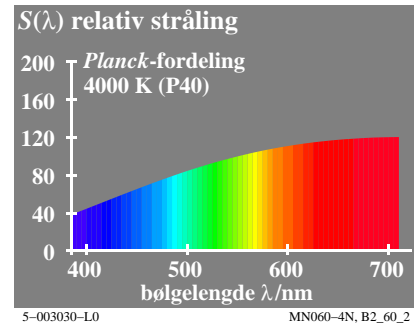
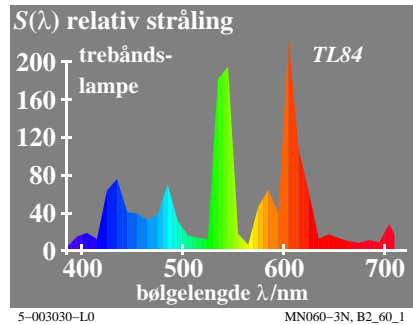
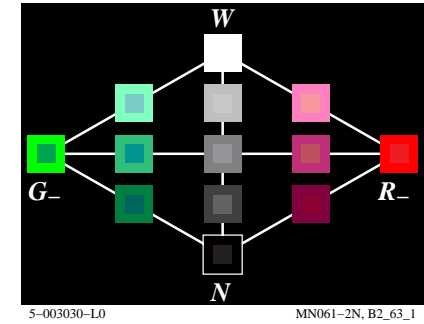
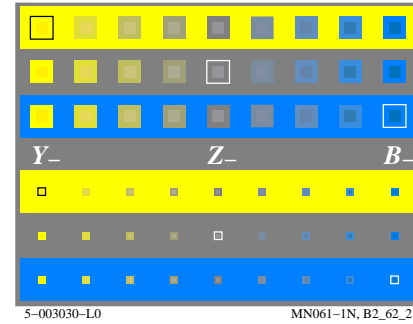
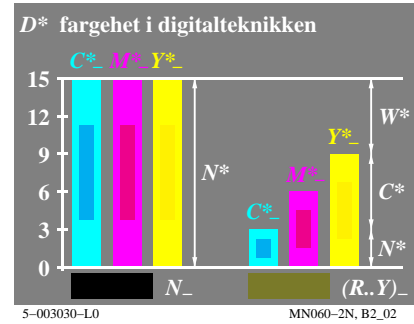
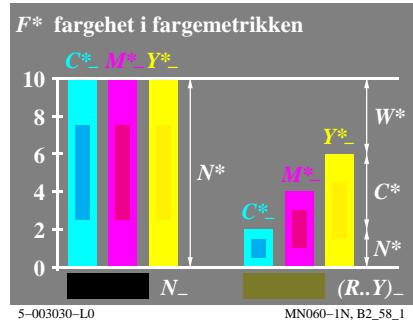
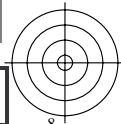
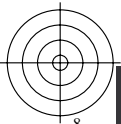
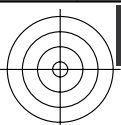


se lignende filer: <http://130.149.60.45/~farbmetrik/MN06/MN06.HTM>
teknisk informasjon: <http://www.ps.bam.de> eller <http://130.149.60.45/~farbmetrik>

TUB registrering: 20150701-MN06/MN06L0NP.PDF /.PS
anvendelse for måling av display output

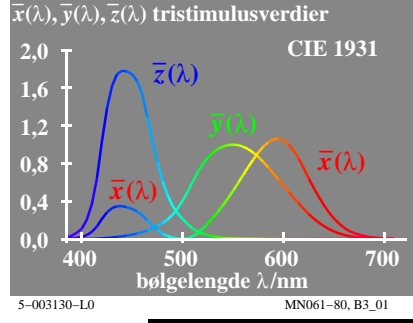
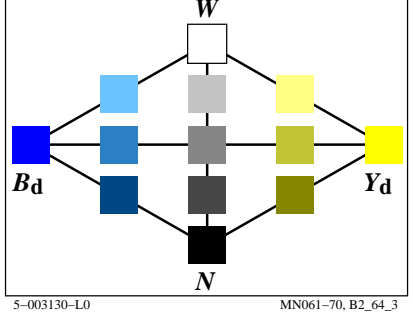
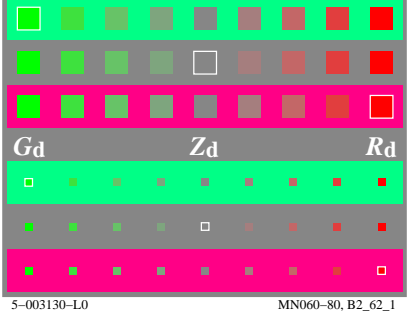
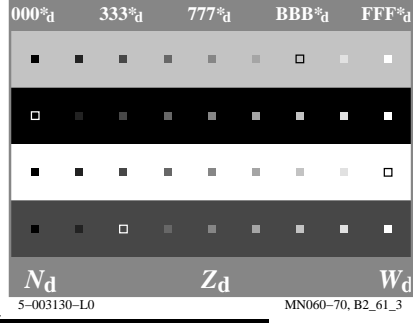
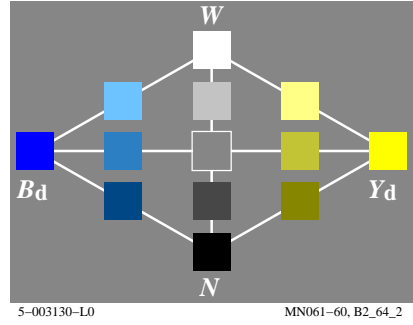
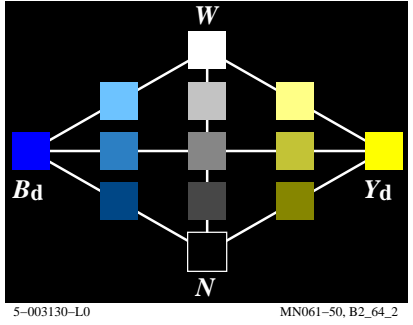
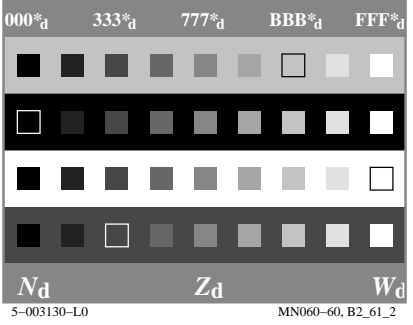
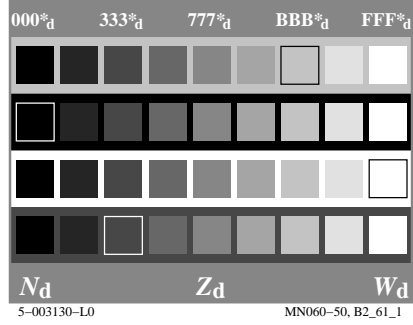
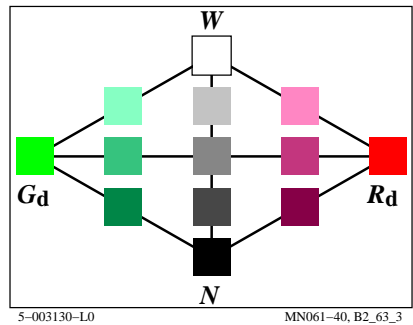
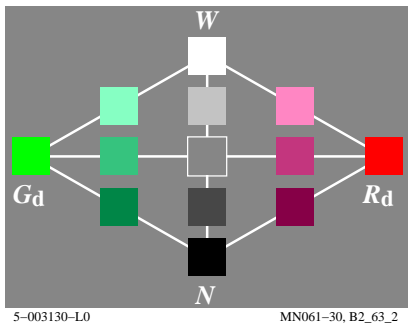
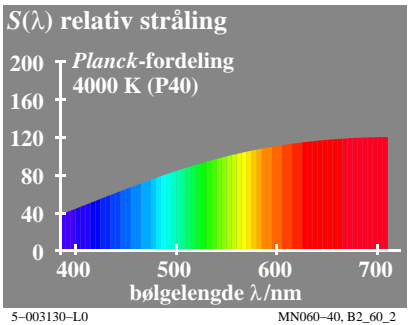
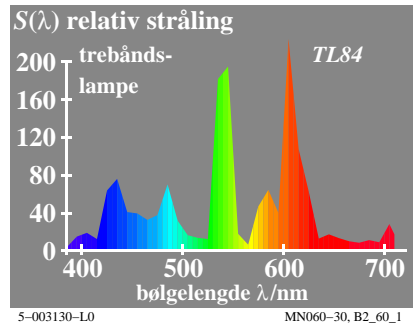
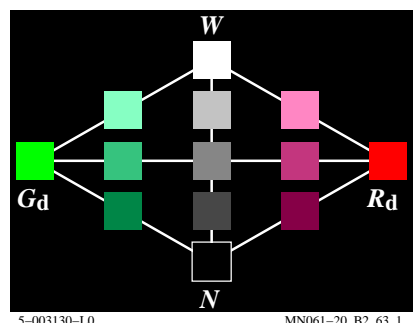
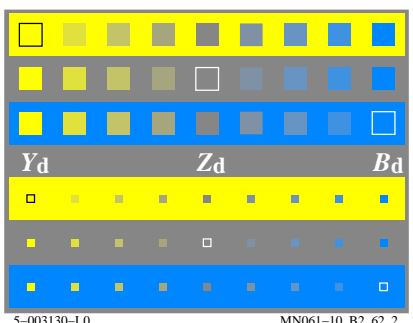
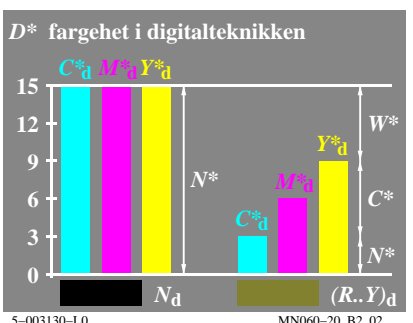
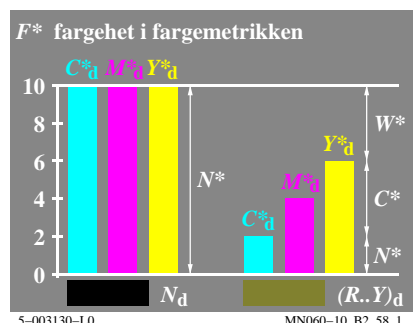
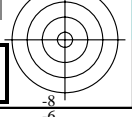
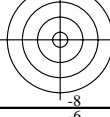
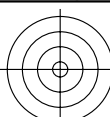
TUB materiell: code=rh4ta



se lignende filer: <http://130.149.60.45/~farbmetrik/MN06/MN06.HTM>
teknisk informasjon: <http://www.ps.bam.de> eller <http://130.149.60.45/~farbmetrik>

TUB registrering: 20150701-MN06/MN06L0NP.PDF /.PS
anvendelse for måling av display output, ingen separasjon

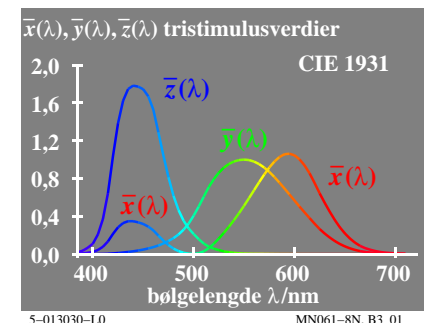
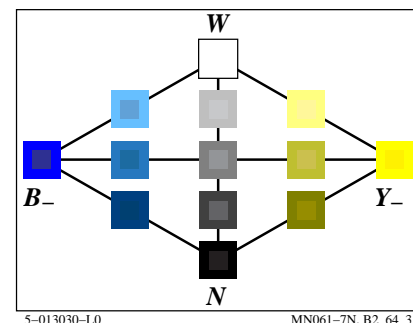
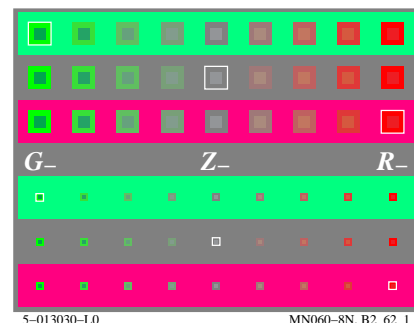
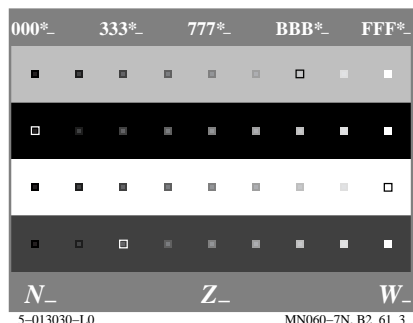
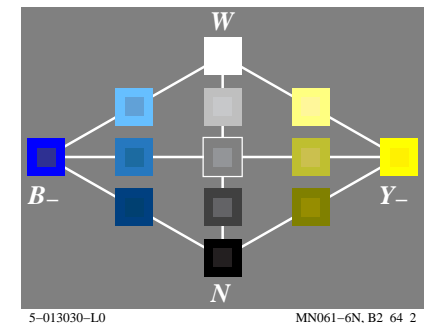
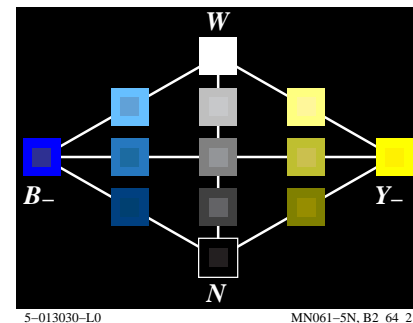
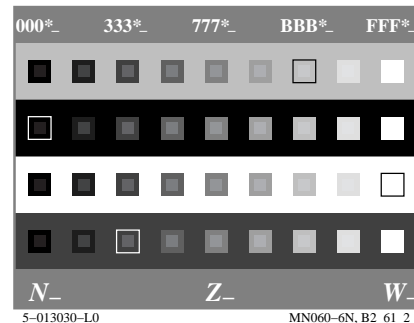
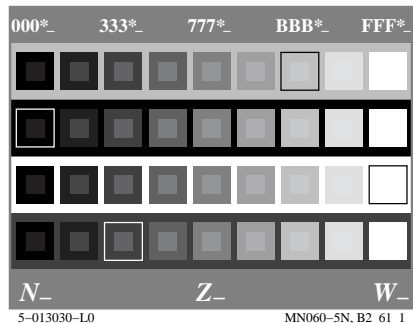
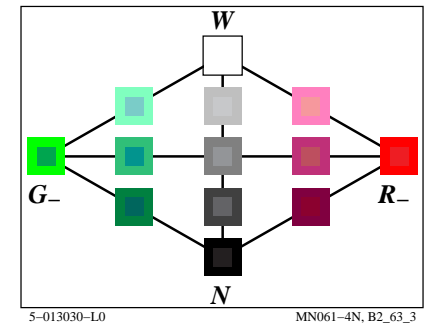
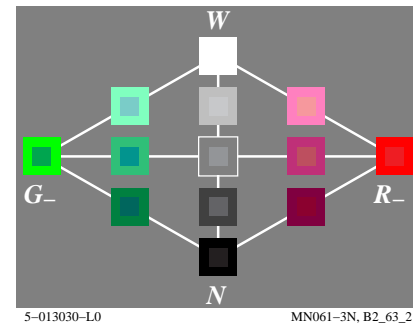
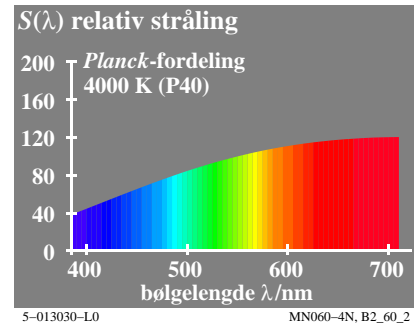
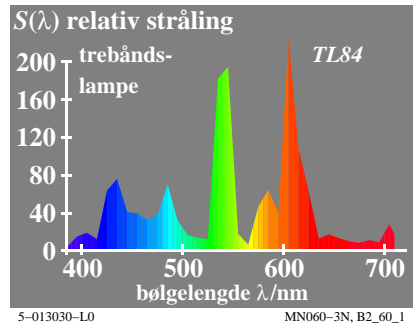
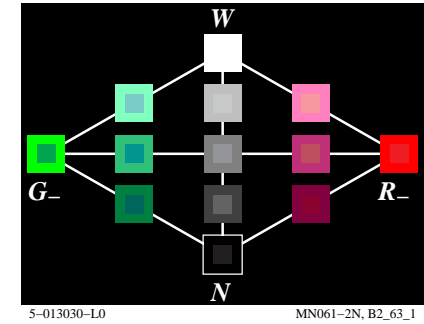
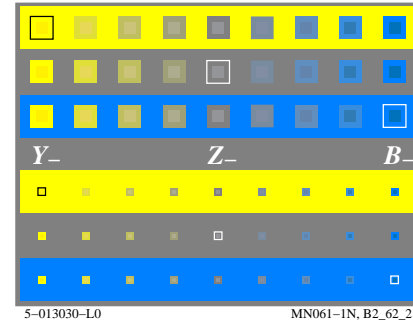
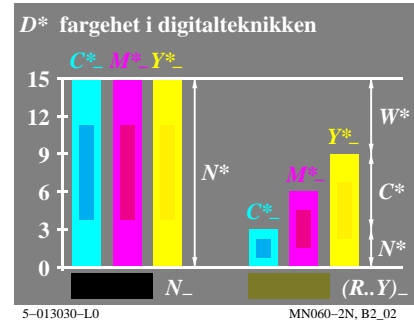
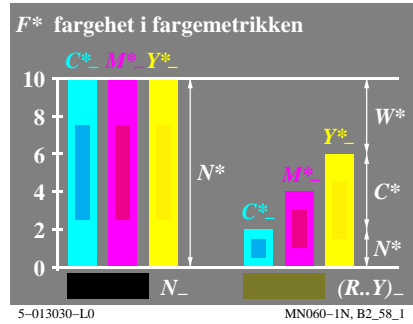
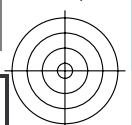
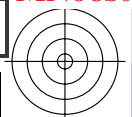
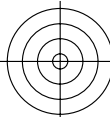
TUB materiell: code=rh4ta



se lignende filer: <http://130.149.60.45/~farbmetrik/MN06/MN06.HTM>
teknisk informasjon: <http://www.ps.bam.de> eller <http://130.149.60.45/~farbmetrik>

TUB registrering: 20150701-MN06/MN06L0NP.PDF /.PS
anvendelse for måling av display output

TUB materiell: code=rh4ta



se lignende filer: <http://130.149.60.45/~farbmetrik/MN06/MN06.HTM>
teknisk informasjon: <http://www.ps.bam.de> eller <http://130.149.60.45/~farbmetrik>

TUB registrering: 20150701-MN06/MN06L0NP.PDF /.PS
anvendelse for måling av display output, ingen separasjon

TUB materiell: code=rh4ta

