

se lignende filer: <http://farbe.li.tu-berlin.de/MN08/MN08.HTM>
<http://130.149.60.45/~farbmetrik> eller <http://farbe.li.tu-berlin.de>

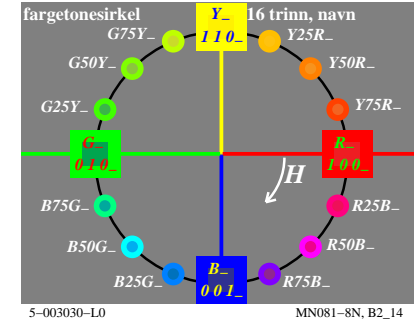
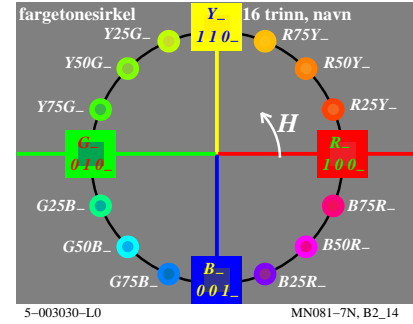
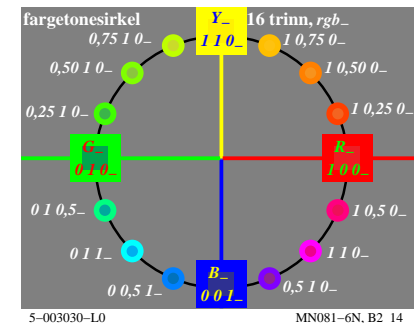
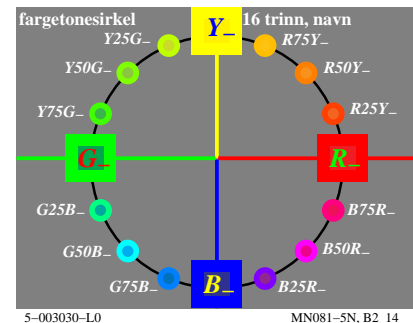
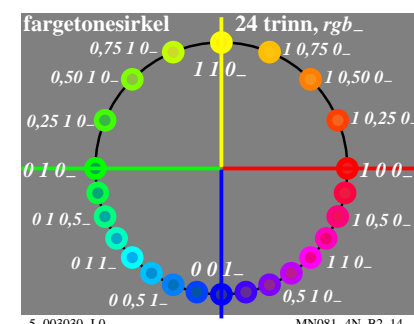
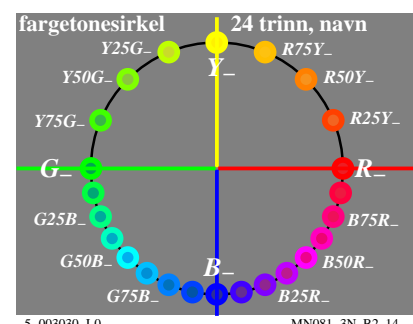
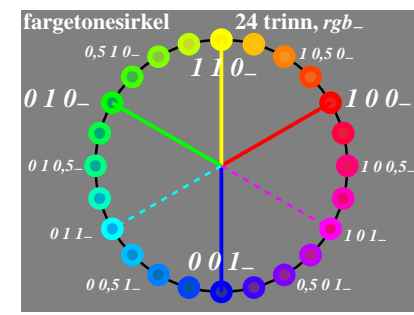
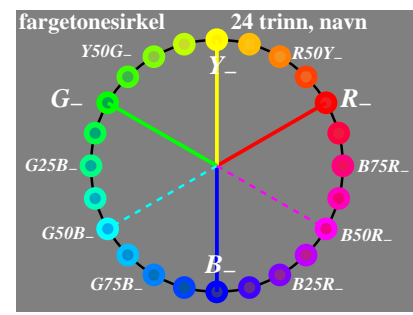
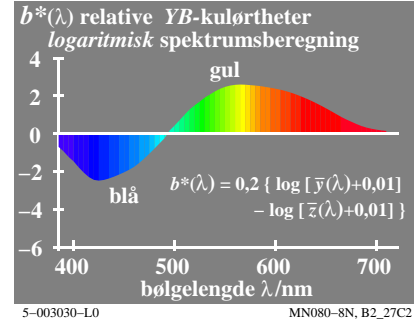
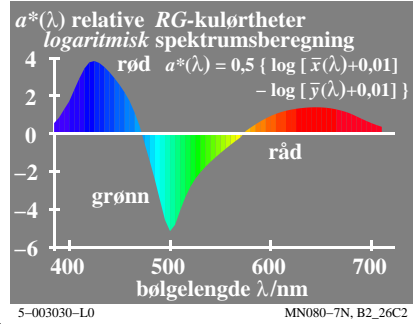
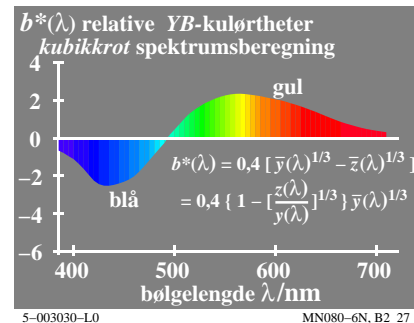
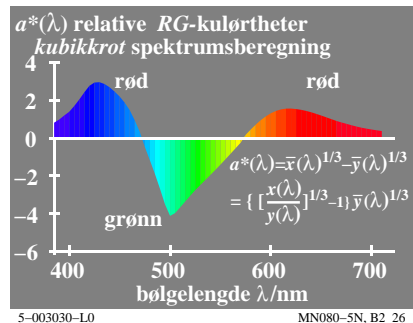
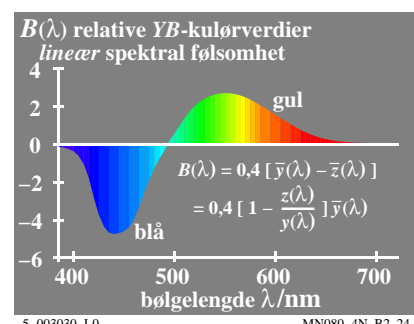
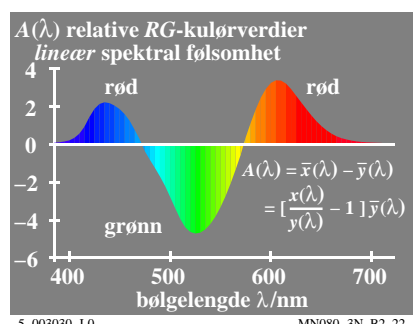
TUB registrering: 20160501-MN08/MN08L0NP.PDF /.PS
anvendelse for måling av display output

TUB materiell: code=rh4ta

Akromatiske farger, mellomfarger
fem akromatiske farger:
 N sort (fransk noir)
 D mørk grå
 Z mellomgrå
 H lys grå
 W hvit
to mellomfarger:
 C_e = G50B_e blå-grønn
 M_e = B50R_e blå-rød

Kulørte farger, elementærfarger
"hverken-eller"-farger
 fire elementærfarger (e):
 R = R_e rød
 hverken gullig eller blålig
 G = G_e grønn
 hverken gullig eller blålig
 B = B_e blå
 hverken grønnlig eller rødlig
 J = Y_e gul (fransk jaune)
 hverken grønnlig eller rødlig

Kulørte farger, apparatfarger
TV, trykk (PR), foto (PH)
 seks apparatfarger (d=device):
 C = C_d cyanblå (cyan)
 M = M_d magentarød (magenta)
 O = R_d orangerød (rød)
 L = G_d løvgrønn (grønn)
 V = B_d fiolettblå (blå)

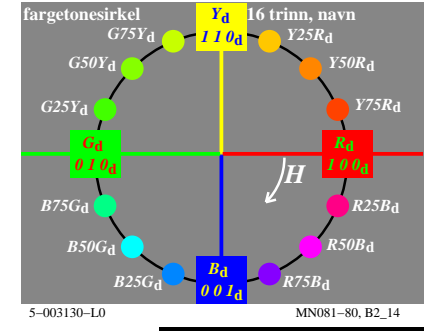
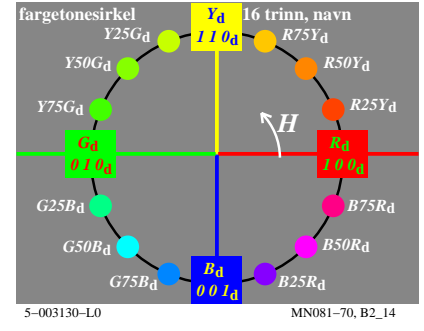
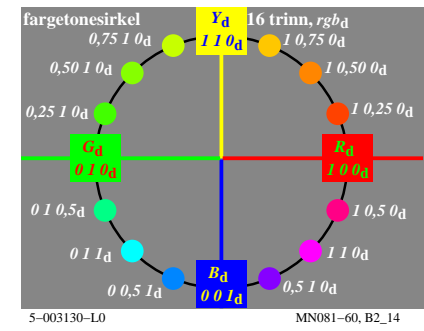
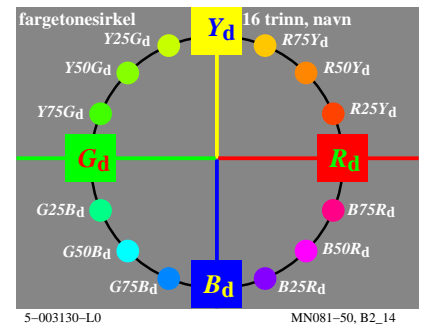
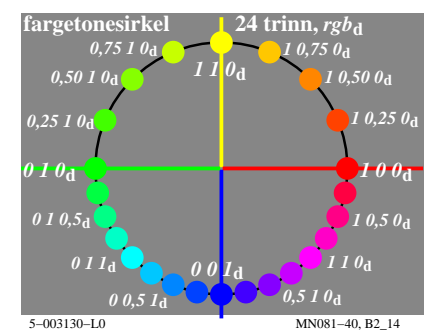
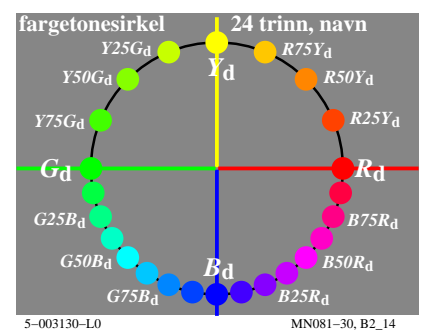
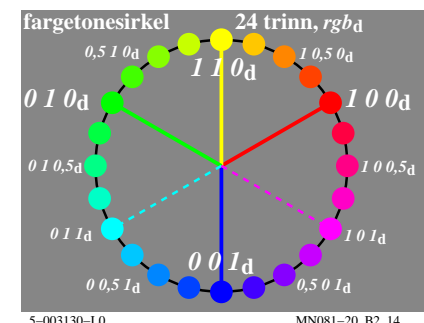
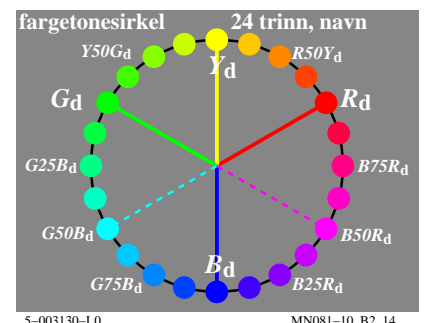
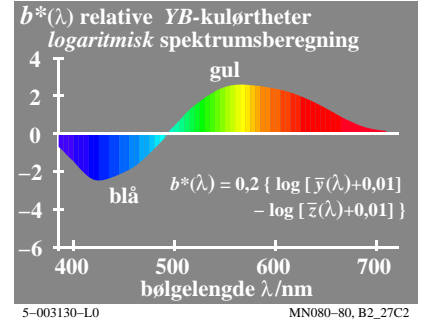
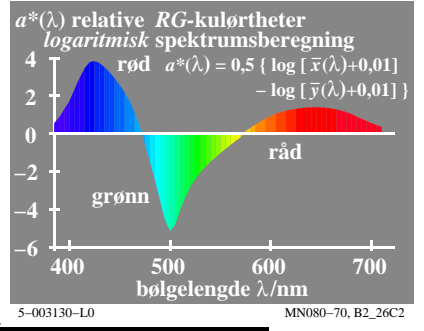
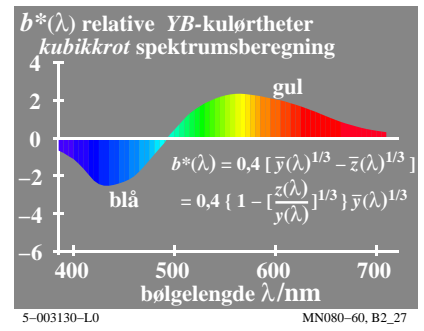
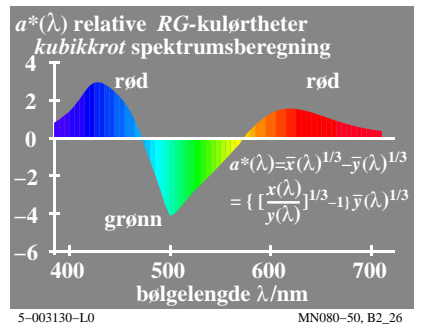
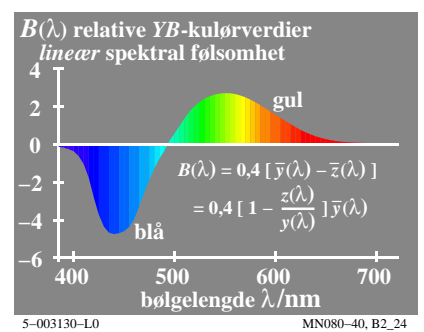
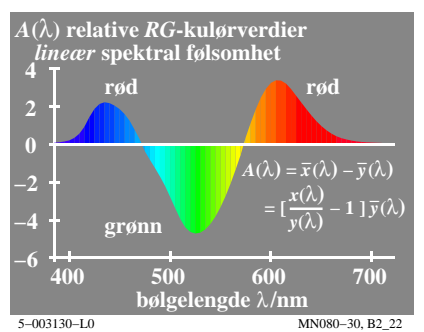


se lignende filer: <http://farbe.li.tu-berlin.de/MN08/MN08.HTM>
<http://130.149.60.45/~farbmetrik> eller <http://farbe.li.tu-berlin.de>

Akromatiske farger, mellomfarger
fem akromatiske farger:
 N sort (fransk noir)
 D mørk grå
 Z mellomgrå
 H lys grå
 W hvit
to mellomfarger:
 C_e = G50B_e blå-grønn
 M_e = B50R_e blå-rød

Kulørte farger, elementærfarger
"hverken-eller"-farger
 fire elementærfarger (e):
 R = R_e rød
 hverken gullig eller blålig
 G = G_e grønn
 hverken gullig eller blålig
 B = B_e blå
 hverken grønnlig eller rødlig
 J = Y_e gul (fransk jaune)
 hverken grønnlig eller rødlig

Kulørte farger, apparatfarger
TV, trykk (PR), foto (PH)
 seks apparatfarger (d=device):
 C = C_d cyanblå (cyan)
 M = M_d magentarød (magenta)
 O = R_d orangerød (rød)
 L = G_d løvgrønn (grønn)
 V = B_d fiolettblå (blå)



se lignende filer: <http://farbe.li.tu-berlin.de/MN08/MN08.HTM>
<http://130.149.60.45/~farbmetrik> eller <http://farbe.li.tu-berlin.de>

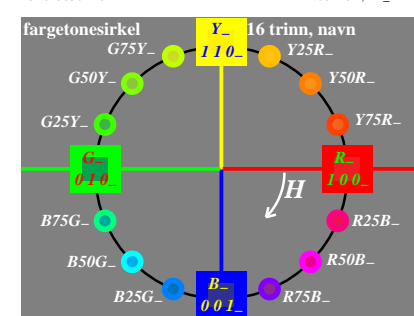
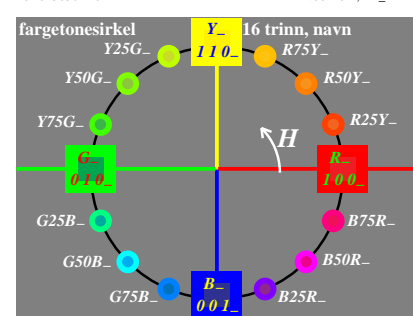
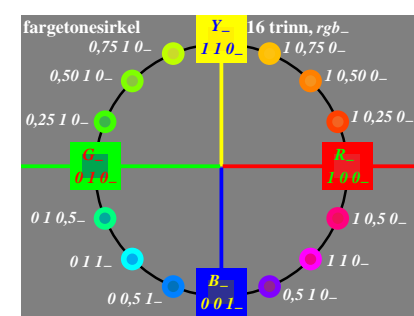
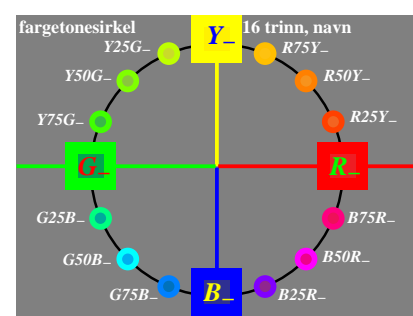
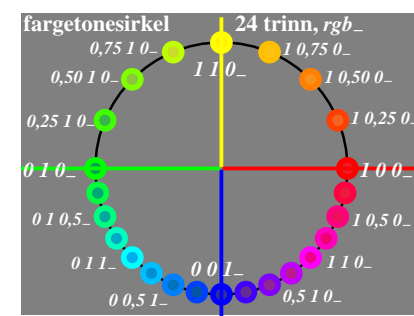
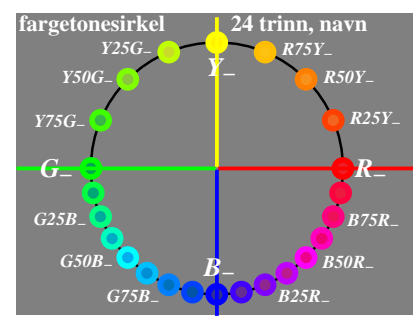
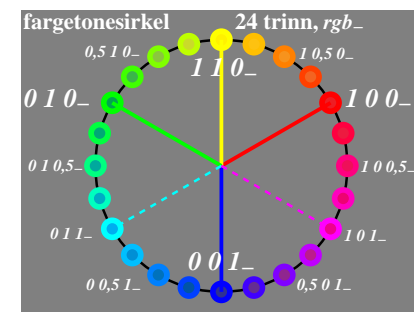
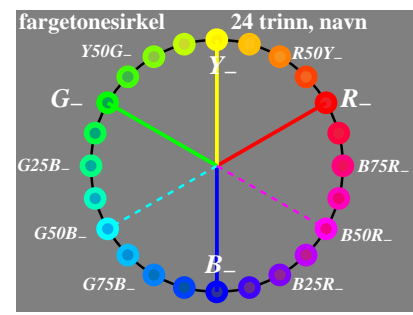
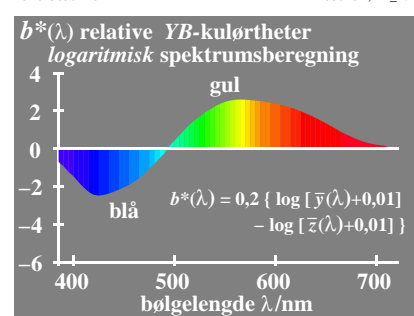
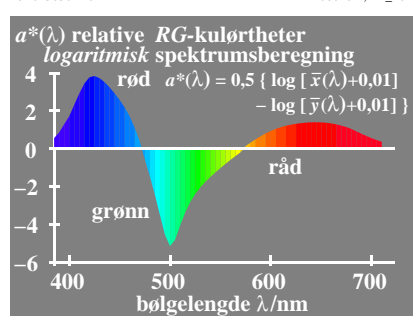
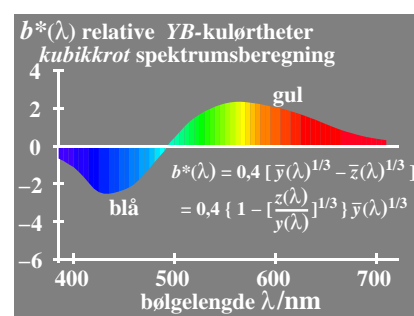
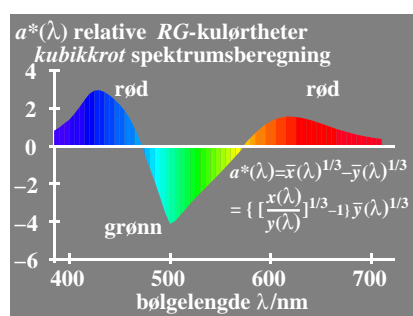
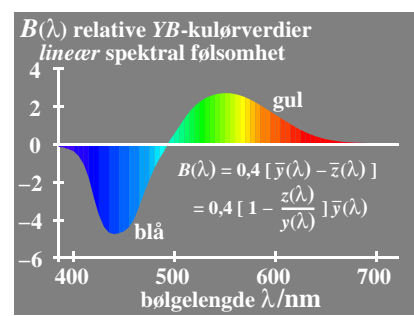
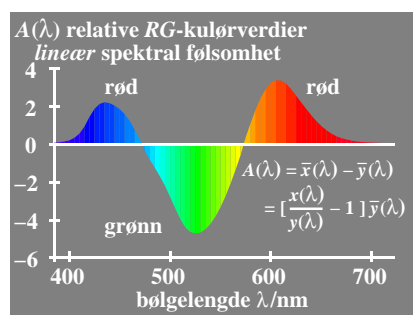
TUB registrering: 20160501-MN08/MN08L0NP.PDF /.PS
anvendelse for måling av display output

TUB materiell: code=rh4ta

Akromatiske farger, mellomfarger
fem akromatiske farger:
 N sort (fransk noir)
 D mørk grå
 Z mellomgrå
 H lys grå
 W hvit
 to mellomfarger:
 C_e = G50B_e blå-grønn
 M_e = B50R_e blå-rød

Kulørte farger, elementærfarger
"hverken-eller"-farger
 fire elementærfarger (e):
 R = R_e rød
 hverken gullig eller blålig
 G = G_e grønn
 hverken gullig eller blålig
 B = B_e blå
 hverken grønnlig eller rødlig
 J = Y_e gul (fransk jaune)
 hverken grønnlig eller rødlig

Kulørte farger, apparatfarger
TV, trykk (PR), foto (PH)
 seks apparatfarger (d=device):
 C = C_d cyanblå (cyan)
 M = M_d magentarød (magenta)
 O = R_d orangerød (rød)
 Y = Y_d gul
 L = G_d løvgrønn (grønn)
 V = B_d fioleblå (blå)



se lignende filer: <http://farbe.li.tu-berlin.de/MN08/MN08.HTM>
<http://130.149.60.45/~farbmetrik> eller <http://farbe.li.tu-berlin.de>

Akromatiske farger, mellomfarger
fem akromatiske farger:
 N sort (fransk noir)
 D mørk grå
 Z mellomgrå
 H lys grå
 W hvit
to mellomfarger:
 C_e = G50B_e blå-grønn
 M_e = B50R_e blå-rød

Kulørte farger, elementærfarger
"hverken-eller"-farger
 fire elementærfarger (e):
 R = R_e rød
 hverken gullig eller blålig
 G = G_e grønn
 hverken gullig eller blålig
 B = B_e blå
 hverken grønnlig eller rødlig
 J = Y_e gul (fransk jaune)
 hverken grønnlig eller rødlig

Kulørte farger, apparatfarger
TV, trykk (PR), foto (PH)
 seks apparatfarger (d=device):
 C = C_d cyanblå (cyan)
 M = M_d magentarød (magenta)
 O = R_d orangerød (rød)
 L = G_d løvgrønn (grønn)
 V = B_d fiolettblå (blå)

