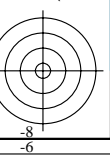
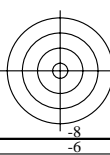
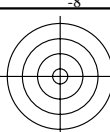


http://farbe.li.tu-berlin.de/MN52/MN52L0FA.TXT /.PS; start output
F: 3D-linearisering MN52/MN52LJ30FA.DAT i fil (F), side 1/2

se lignende filer: http://farbe.li.tu-berlin.de/MN52/MN52.HTM
http://130.149.60.45/~farbmetrik eller http://farbe.li.tu-berlin.de

TUB registrering: 20190801-MN52/MN52L0FA.TXT /.PS
anvendelse for måling av display output

TUB materiell: code=rh4ta



fargemangfold: uordnet

5-103000-L0 MN520-1N, B2_02

akromatiske farger: uordnet

5-103000-L0 MN520-2N, B2_03

apparatfarge: blå B_
kriterium: hverken... eller...

5-103000-L0 MN521-1N, B2_10

apparatfarge: grønn G_
kriterium: hverken... eller...

5-103000-L0 MN521-2N, B2_11

kulørte farger: uordnet

5-103000-L0 MN520-3N, B2_04

fargemangfold: rgb_ og cmy_ code

5-103000-L0 MN520-4N, B2_05

apparatfarge: rød R_
kriterium: hverken... eller...

5-103000-L0 MN521-3N, B2_12

fargetonesirkel åttedelt

5-103000-L0 MN521-4N, B2_13

W

5-103000-L0 MN520-5N, B2_06

W

5-103000-L0 MN520-6N, B2_07

fargetonesirkel åttedelt

5-103000-L0 MN521-4N, B2_13

W

5-103000-L0 MN521-6N, B2_16

W

5-103000-L0 MN520-7N, B2_08

apparatfarge: gul Y_
kriterium: hverken... eller...

5-103000-L0 MN520-8N, B2_09

W

5-103000-L0 MN521-7N, B2_15

W

5-103000-L0 MN521-8N, B2_17

TUB-testplansje MN52; Computergrafikk og fargemetrikk
Bildeserie MN52, 3D=1, de=0

input: rgb/cmyk -> rgb/cmyk
output: ingen endring



se lignende filer: <http://farbe.li.tu-berlin.de/MN52/MN52.HTM>
<http://130.149.60.45/~farbmetrik> eller <http://farbe.li.tu-berlin.de>

TUB registrering: 20190801-MN52/MN52L0FA.TXT /.PS
anvendelse for måling av display output, ingen separasjon

TUB materiell: code=rh4ta



fargemangfold: uordnet

5-103100-L0 MN520-12, B2_02

akromatiske farger: uordnet

5-103100-L0 MN520-22, B2_03

apparatfarge: blå B_d
kriterium: hverken... eller...

5-103100-L0 MN521-12, B2_10

apparatfarge: grønn G_d
kriterium: hverken... eller...

5-103100-L0 MN521-22, B2_11

kulørte farger: uordnet

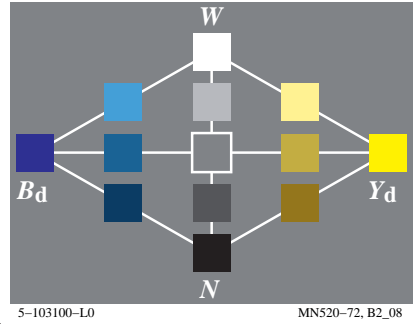
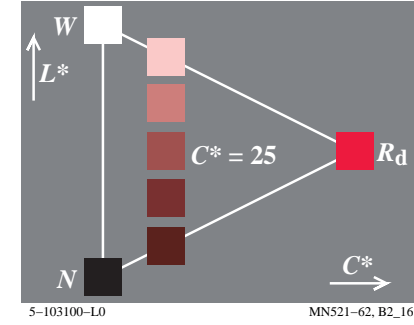
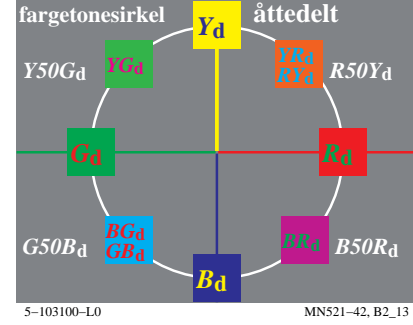
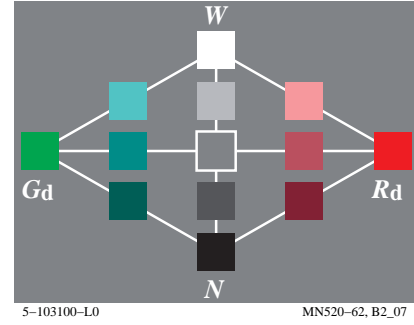
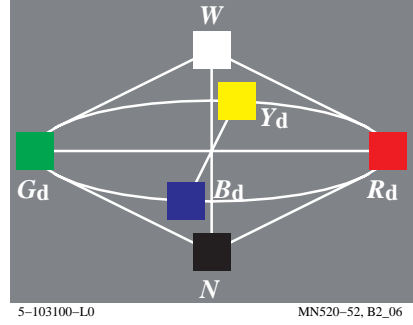
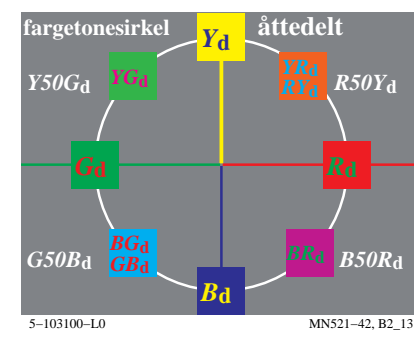
5-103100-L0 MN520-32, B2_04

fargemangfold: rgb_{dd} , cmy_{dd} code

5-103100-L0 MN520-42, B2_05

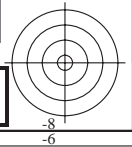
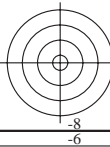
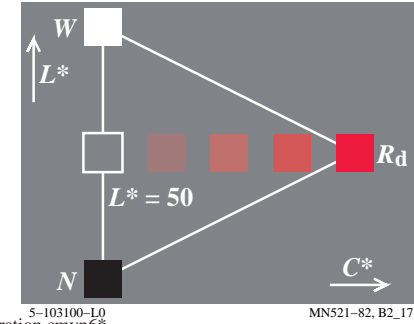
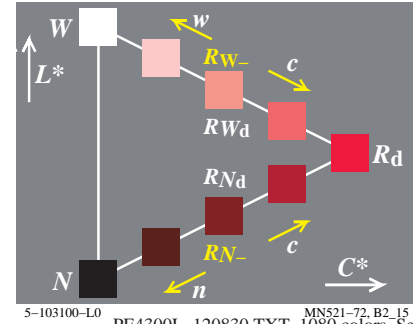
apparatfarge: rød R_d
kriterium: hverken... eller...

5-103100-L0 MN521-32, B2_12



apparatfarge: gul Y_d
kriterium: hverken... eller...

5-103100-L0 MN520-82, B2_09

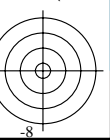
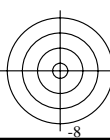
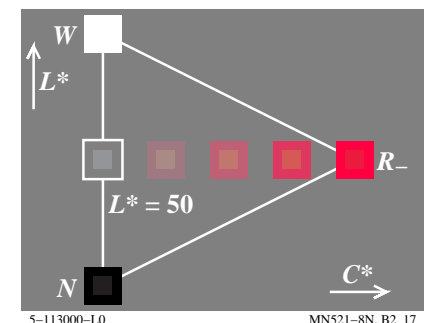
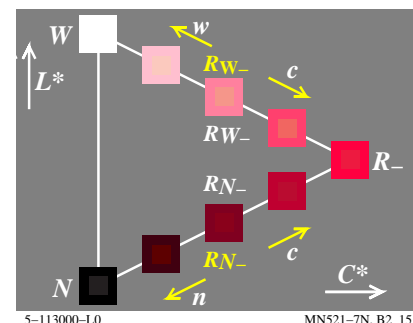
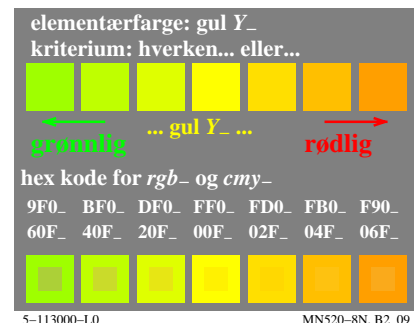
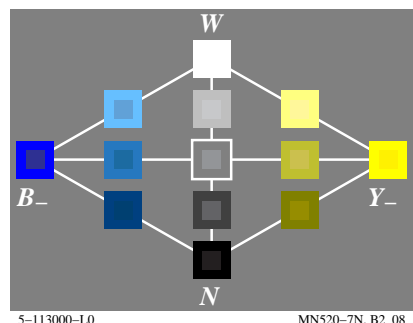
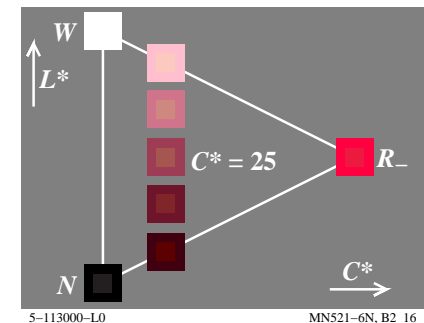
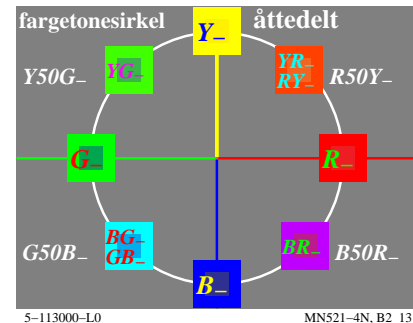
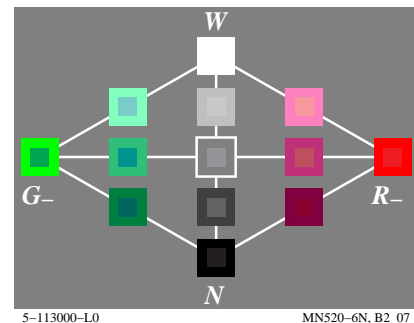
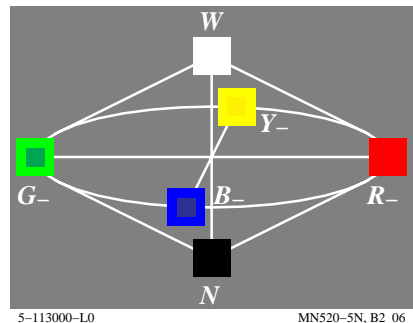
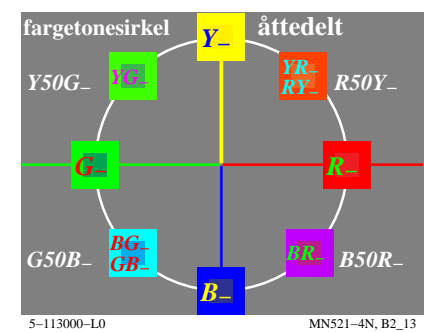
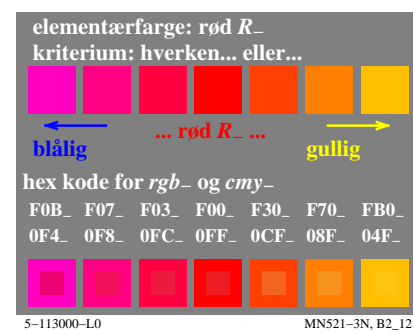
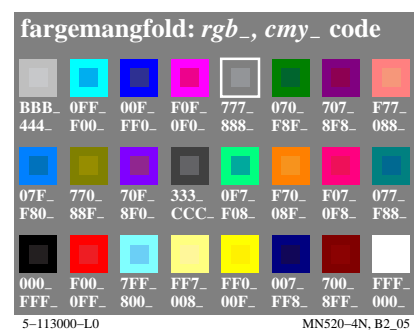
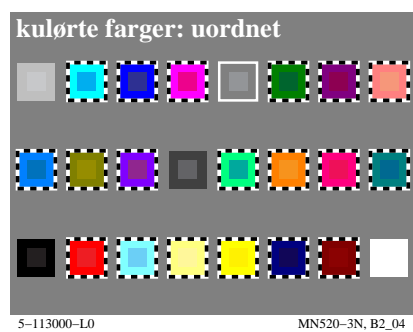
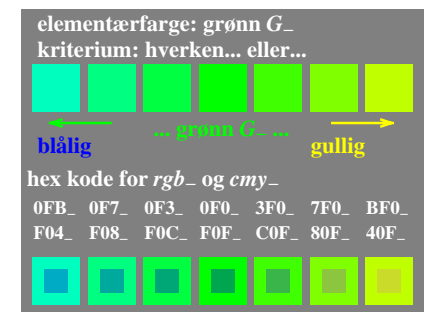
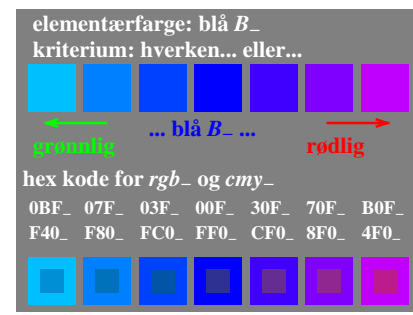
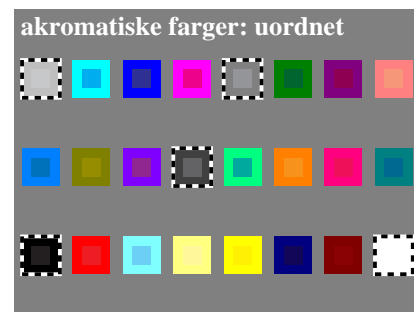
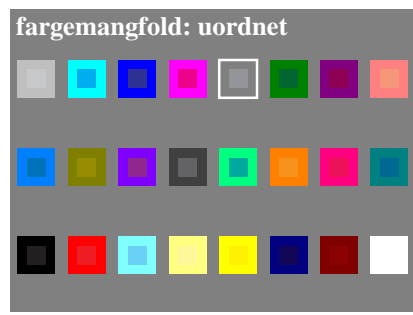
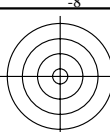


http://farbe.li.tu-berlin.de/MN52/MN52L0FA.TXT /.PS; start output
F: 3D-linearisering MN52/MN52LJ30FA.DAT i fil (F), side 1/2

se lignende filer: <http://farbe.li.tu-berlin.de/MN52/MN52.HTM>
<http://130.149.60.45/~farbmetrik> eller <http://farbe.li.tu-berlin.de>

TUB registrering: 20190801-MN52/MN52L0FA.TXT /.PS
anvendelse for måling av display output

TUB materiell: code=rh4da



TUB-testplansje MN52; Computergrafikk og fargemetrikk
Bildeserie MN52, 3D=1, de=1

input: rgb/cmyk -> rgb/cmyk
output: ingen endring

se lignende filer: <http://farbe.li.tu-berlin.de/MN52/MN52.HTM>
<http://130.149.60.45/~farbmetrik> eller <http://farbe.li.tu-berlin.de>

TUB registrering: 20190801-MN52/MN52L0FA.TXT /.PS
anvendelse for måling av display output, ingen separasjon

TUB materiell: code=rh4ta

