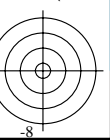
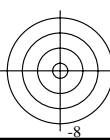
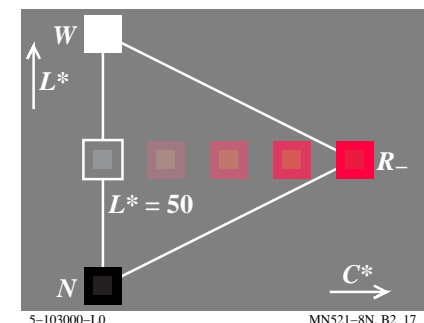
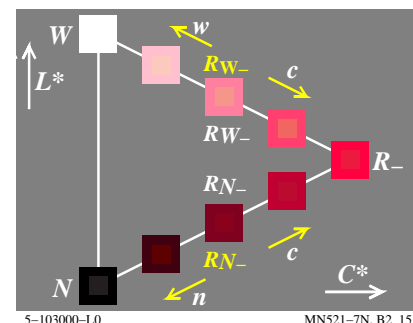
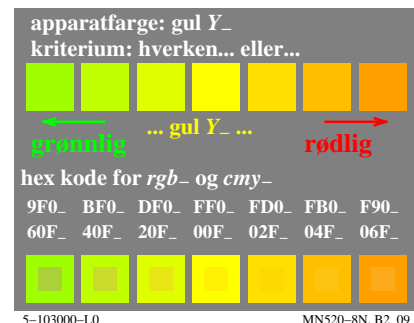
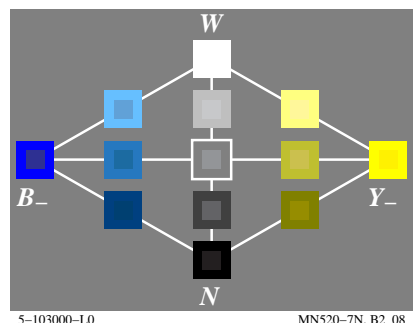
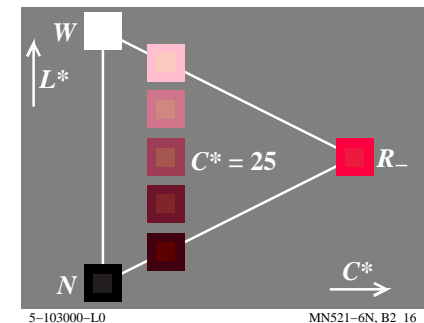
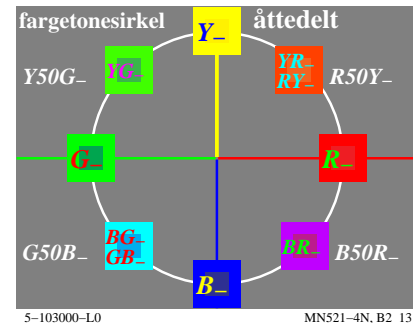
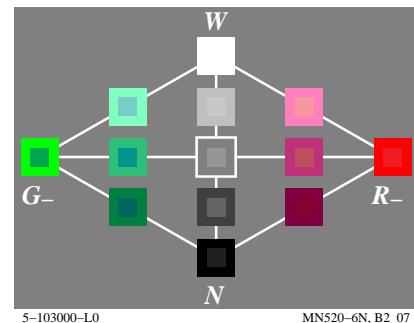
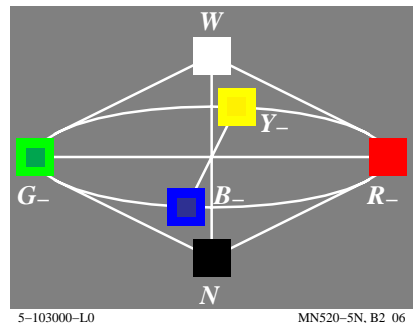
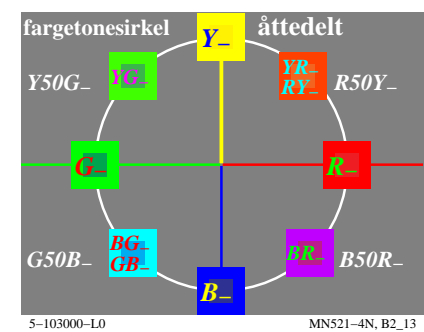
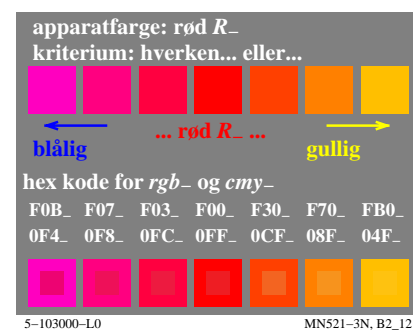
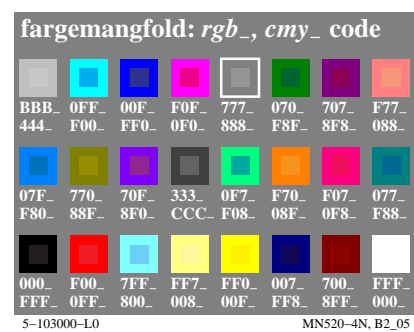
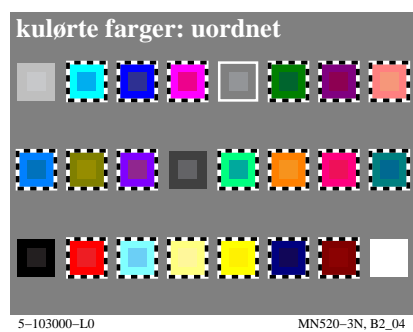
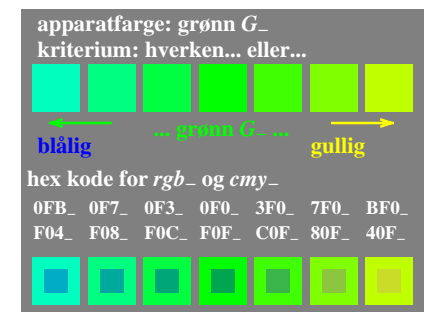
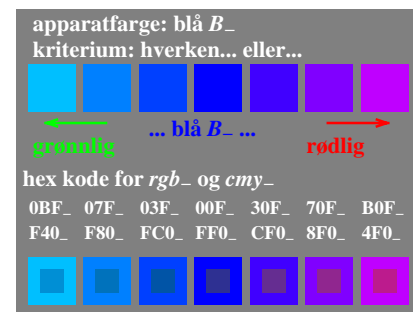
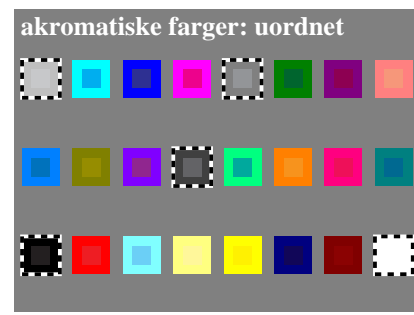
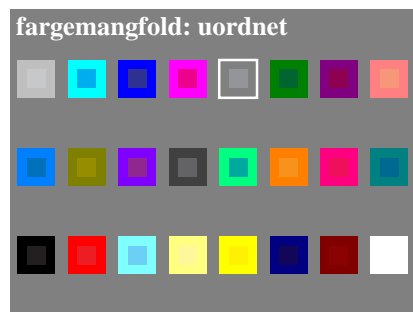
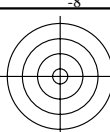


se lignende filer: <http://farbe.li.tu-berlin.de/MN52/MN52.HTM>
<http://130.149.60.45/~farbmetrik> eller <http://farbe.li.tu-berlin.de>

TUB registrering: 20190801-MN52/MN52L0FP.PDF /.PS
anvendelse for måling av display output

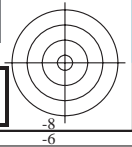
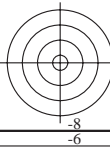
TUB materiell: code=rh4ta



se lignende filer: <http://farbe.li.tu-berlin.de/MN52/MN52.HTM>
<http://130.149.60.45/~farbmetrik> eller <http://farbe.li.tu-berlin.de>

TUB registrering: 20190801-MN52/MN52L0FP.PDF /.PS
anvendelse for måling av display output, ingen separasjon

TUB materiell: code=rh4ta



fargemangfold: uordnet

5-103100-L0 MN520-12, B2_02

akromatiske farger: uordnet

5-103100-L0 MN520-22, B2_03

apparatfarge: blå B_d
kriterium: hverken... eller...

grønnlig ... blå B_d ... rødlig

hex kode for rgb_{dd} og cmy_{dd}

0CF_{dd} 07F_{dd} 03F_{dd} 00F_{dd} 30F_{dd} 70F_{dd} C0F_{dd}
F30_{dd} F80_{dd} FC0_{dd} FF0_{dd} CF0_{dd} 8F0_{dd} 3F0_{dd}

5-103100-L0 MN521-12, B2_10

apparatfarge: grønn G_d
kriterium: hverken... eller...

blålig ... grønn G_d ... gullig

hex kode for rgb_{dd} og cmy_{dd}

0FC_{dd} 0F8_{dd} 0F3_{dd} 0F0_{dd} 3F0_{dd} 8F0_{dd} CF0_{dd}
F03_{dd} F07_{dd} F0C_{dd} F0F_{dd} C0F_{dd} 70F_{dd} 30F_{dd}

5-103100-L0 MN521-22, B2_11

kulørte farger: uordnet

5-103100-L0 MN520-32, B2_04

fargemangfold: rgb_{dd} , cmy_{dd} code

hex kode for rgb_{dd} og cmy_{dd}

AAB_{dd}0FF_{dd} 00F_{dd} F0F_{dd} 666_{dd} 060_{dd} 706_{dd} F79_{dd}
554_{dd} F00_{dd} FF0_{dd} 0F0_{dd} 999_{dd} F9F_{dd} 8F9_{dd} 086_{dd}
07F_{dd} 860_{dd} 70F_{dd} 333_{dd} 0F8_{dd} F80_{dd} F07_{dd} 056_{dd}
F80_{dd} 79F_{dd} 8F0_{dd} CCC_{dd}F07_{dd} 07F_{dd} 0F8_{dd} FA9_{dd}
000_{dd} F00_{dd} 6FF_{dd} FF7_{dd} FF0_{dd} 006_{dd} 700_{dd} FFF_{dd}
FFF_{dd} 0FF_{dd} 900_{dd} 008_{dd} 00F_{dd} FF9_{dd} 8FF_{dd} 000_{dd}

5-103100-L0 MN520-42, B2_05

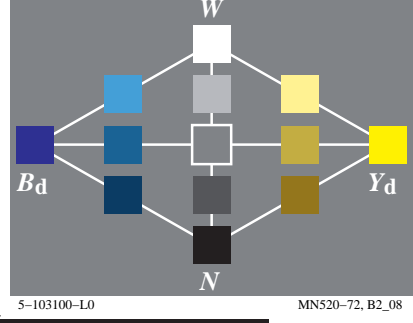
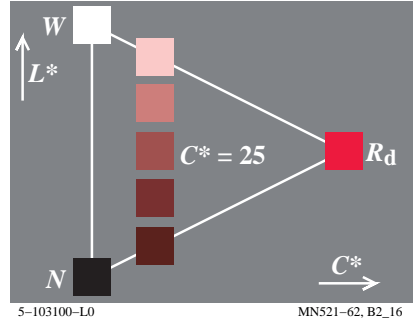
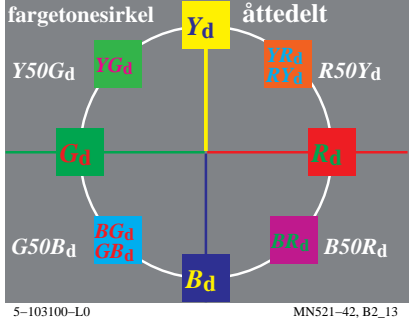
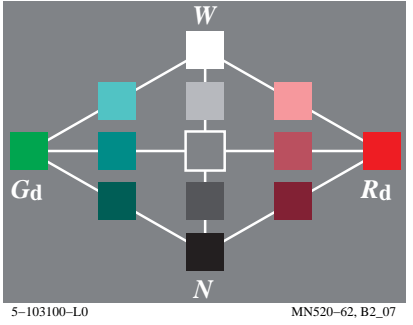
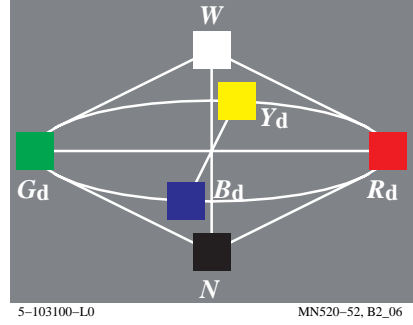
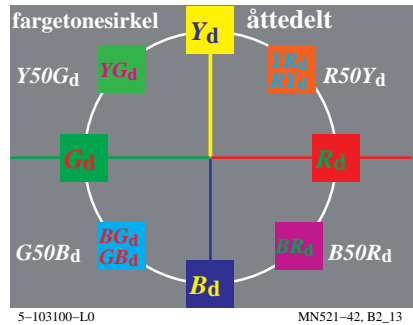
apparatfarge: rød R_d
kriterium: hverken... eller...

blålig ... rød R_d ... gullig

hex kode for rgb_{dd} og cmy_{dd}

F0C_{dd} F07_{dd} F03_{dd} F00_{dd} F30_{dd} F80_{dd} FC0_{dd}
0F3_{dd} 0F8_{dd} 0FC_{dd} 0FF_{dd} 0CF_{dd} 07F_{dd} 03F_{dd}

5-103100-L0 MN521-32, B2_12



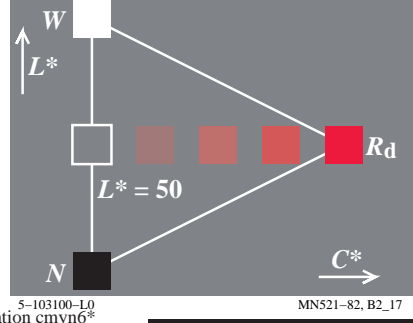
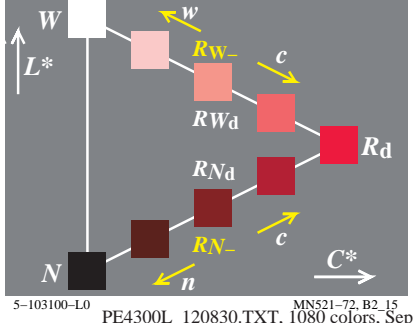
apparatfarge: gul Y_d
kriterium: hverken... eller...

grønnlig ... gul Y_d ... rødlig

hex kode for rgb_{dd} og cmy_{dd}

AF0_{dd} CF0_{dd} EF0_{dd} FF0_{dd} FE0_{dd} FC0_{dd} FA0_{dd}
50F_{dd} 30F_{dd} 10F_{dd} 00F_{dd} 01F_{dd} 03F_{dd} 05F_{dd}

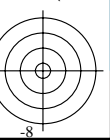
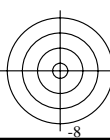
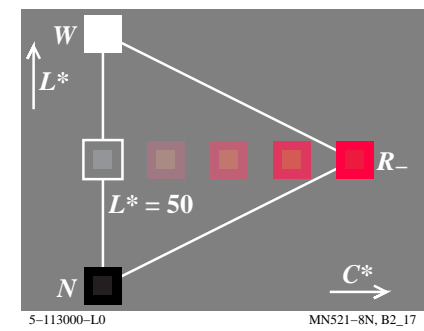
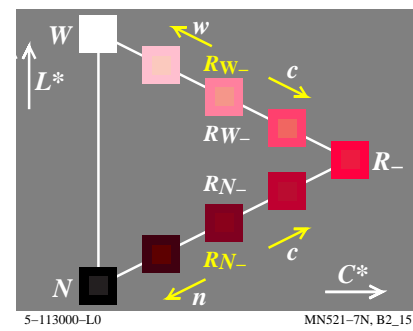
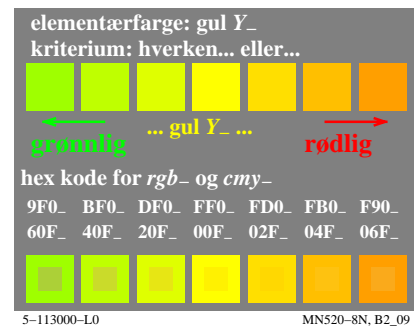
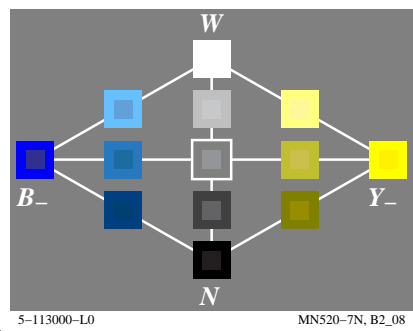
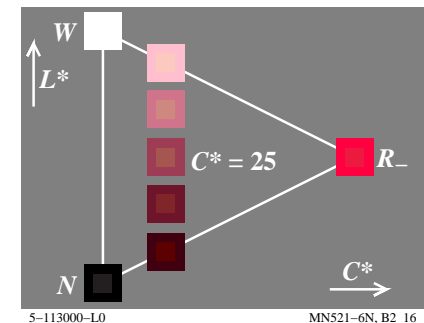
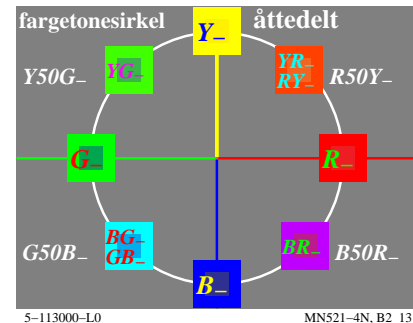
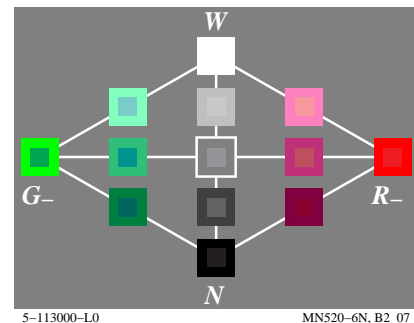
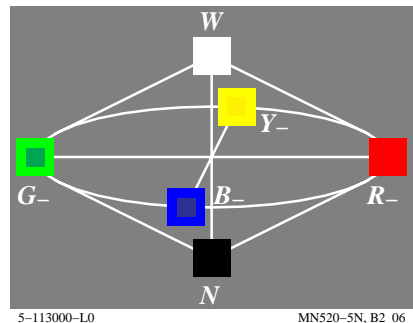
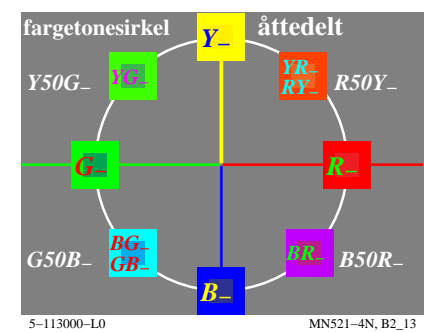
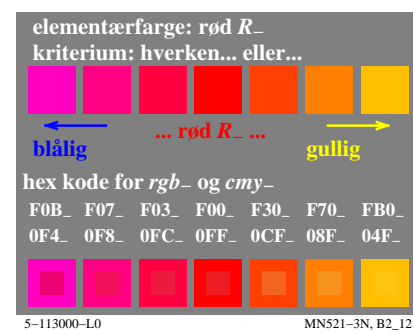
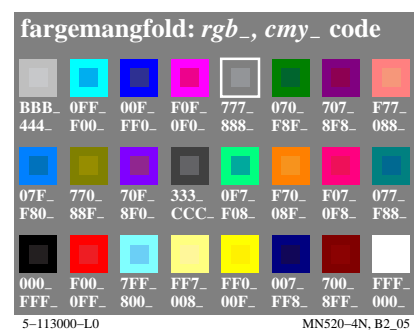
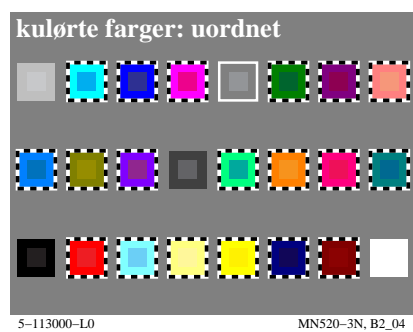
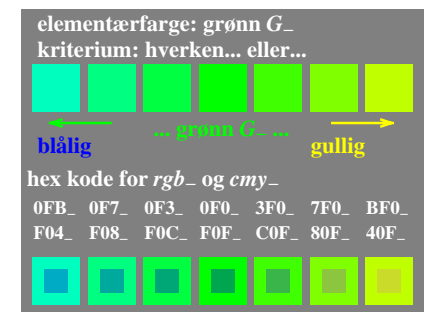
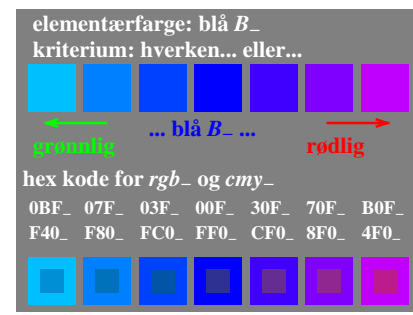
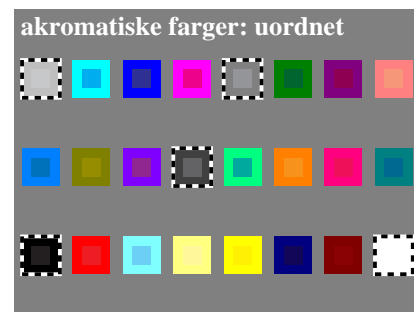
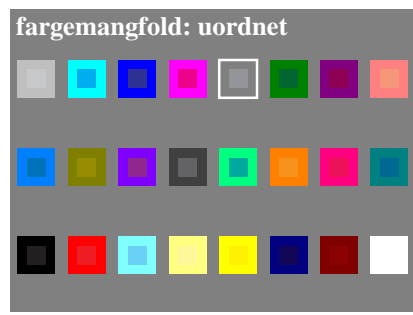
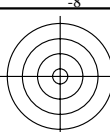
5-103100-L0 MN520-82, B2_09



se lignende filer: <http://farbe.li.tu-berlin.de/MN52/MN52.HTM>
<http://130.149.60.45/~farbmetrik> eller <http://farbe.li.tu-berlin.de>

TUB registrering: 20190801-MN52/MN52L0FP.PDF /.PS
anvendelse for måling av display output

TUB materiell: code=rhadta



se lignende filer: <http://farbe.li.tu-berlin.de/MN52/MN52.HTM>
<http://130.149.60.45/~farbmetrik> eller <http://farbe.li.tu-berlin.de>

TUB registrering: 20190801-MN52/MN52L0FP.PDF /.PS
anvendelse for måling av display output, ingen separasjon

TUB materiell: code=rh4ta



fargemangfold: uordnet

5-113100-L0 MN520-13, B2_02

akromatiske farger: uordnet

5-113100-L0 MN520-23, B2_03

elementærfarge: blå B_e
kriterium: hverken... eller...

hex kode for rgb_{de} og cmy_{de}
0F $_{de}$ 0C $_{de}$ 08 $_{de}$ 06 $_{de}$ 03 $_{de}$ 00 $_{de}$ 40 $_{de}$
F0 $_{de}$ F3 $_{de}$ F7 $_{de}$ F9 $_{de}$ FC $_{de}$ FF $_{de}$ BF $_{de}$

5-113100-L0 MN521-13, B2_10

elementærfarge: grønn G_e
kriterium: hverken... eller...

hex kode for rgb_{de} og cmy_{de}
0F $_{de}$ 0F $_{de}$ 0F $_{de}$ 0F $_{de}$ 1F $_{de}$ 5F $_{de}$ 9F $_{de}$
F0 $_{de}$ F0 $_{de}$ F0 $_{de}$ F0 $_{de}$ E0 $_{de}$ A0 $_{de}$ 60 $_{de}$

5-113100-L0 MN521-23, B2_11

kulørte farger: uordnet

5-113100-L0 MN520-33, B2_04

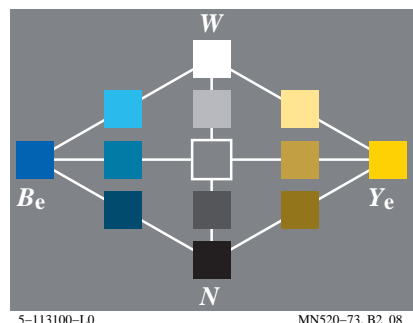
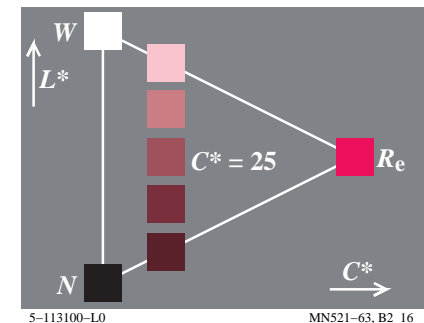
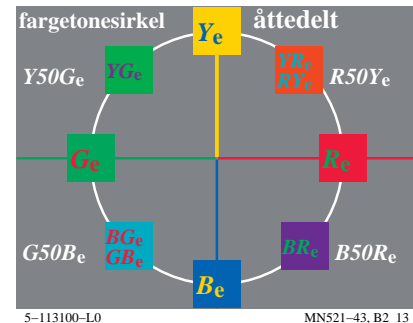
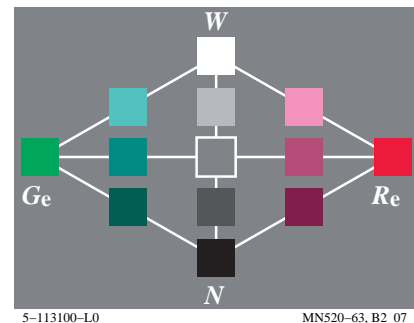
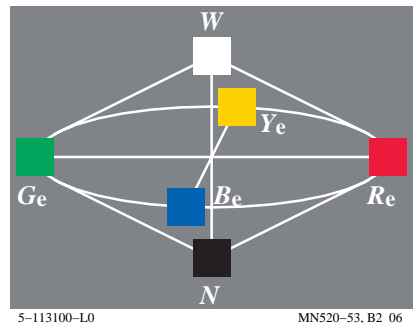
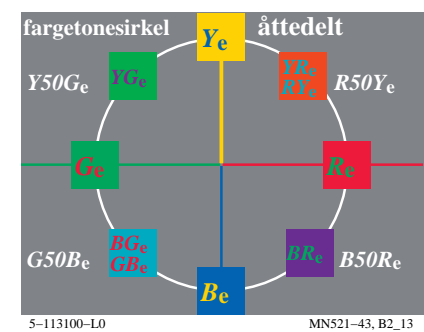
fargemangfold: rgb_{de} , cmy_{de} code

5-113100-L0 MN520-43, B2_05

elementærfarge: rød R_e
kriterium: hverken... eller...

hex kode for rgb_{de} og cmy_{de}
A0 $_{de}$ F0 $_{de}$ F0 $_{de}$ F0 $_{de}$ F2 $_{de}$ F5 $_{de}$ F8 $_{de}$
5F $_{de}$ 0F $_{de}$ 0F $_{de}$ 0F $_{de}$ 0F $_{de}$ 0A $_{de}$ 07 $_{de}$

5-113100-L0 MN521-33, B2_12



elementærfarge: gul Y_e
kriterium: hverken... eller...

hex kode for rgb_{de} og cmy_{de}
7F $_{de}$ 9F $_{de}$ DF $_{de}$ FD $_{de}$ FA $_{de}$ F8 $_{de}$ F7 $_{de}$
80 $_{de}$ 60 $_{de}$ 20 $_{de}$ 02 $_{de}$ 05 $_{de}$ 07 $_{de}$ 08 $_{de}$

5-113100-L0 MN520-83, B2_09

