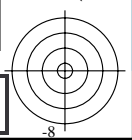
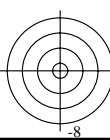
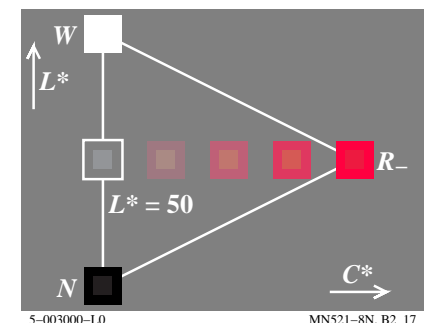
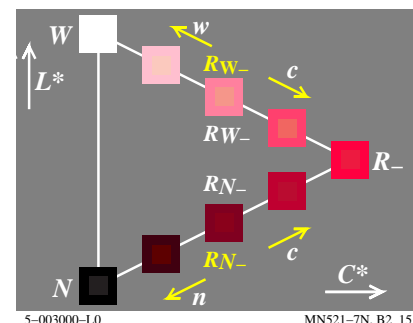
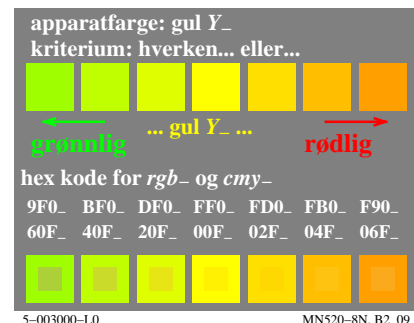
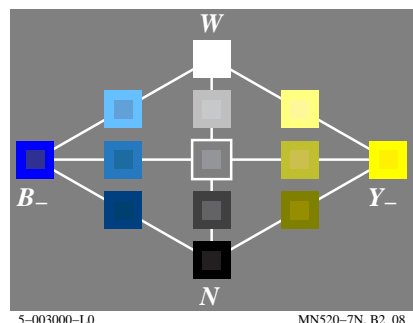
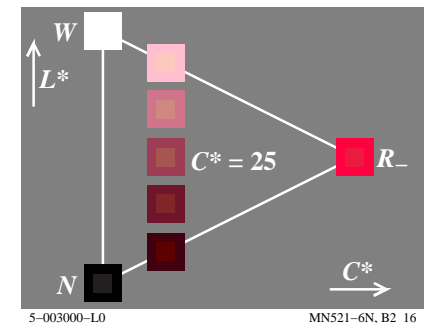
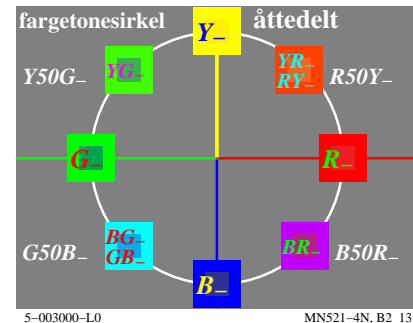
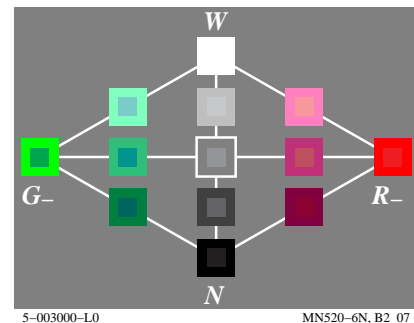
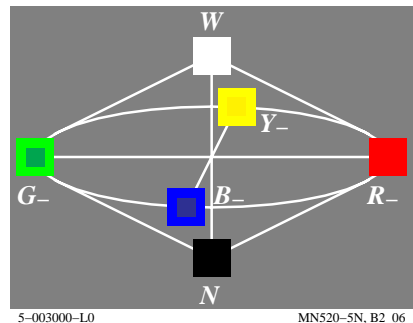
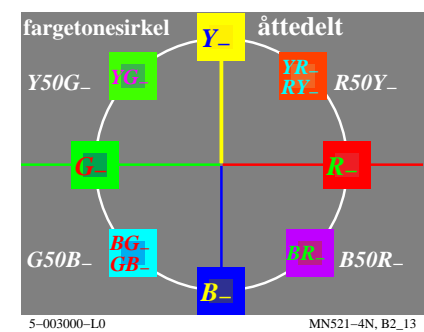
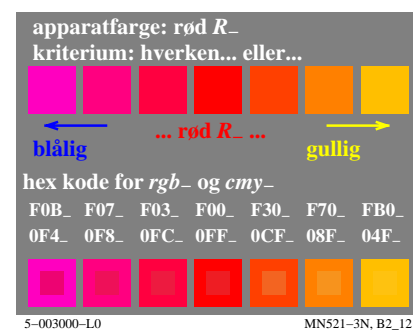
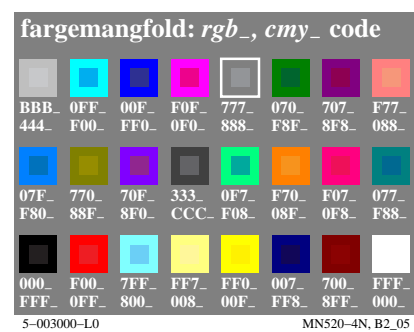
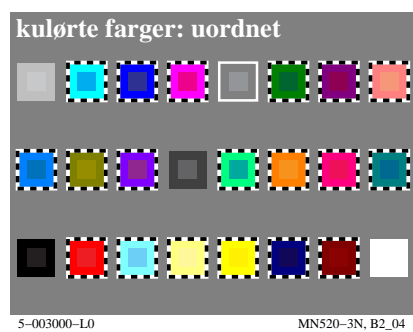
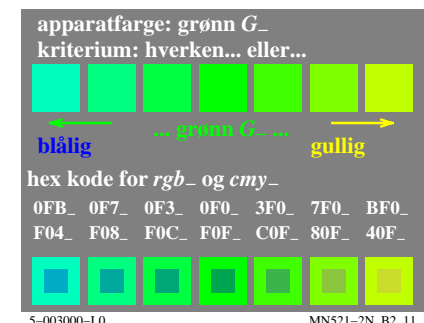
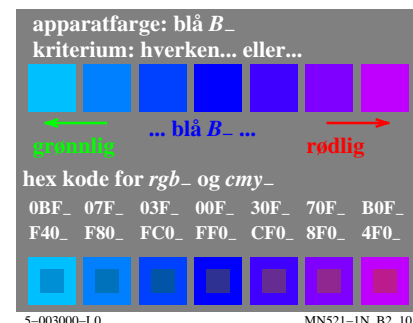
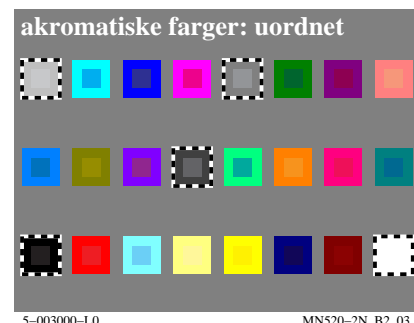
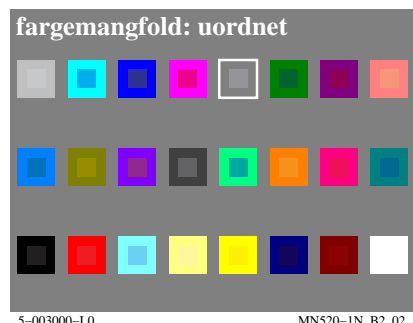
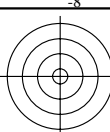


http://farbe.li.tu-berlin.de/MN52/MN52L0NA.TXT /.PS; start output
N: ingen 3D-linearisering (OL) i fil (F) eller PS-startup (S), side 1/2

se lignende filer: <http://farbe.li.tu-berlin.de/MN52/MN52.HTM>
<http://130.149.60.45/~farbmetrik> eller <http://farbe.li.tu-berlin.de>

TUB registrering: 20190801-MN52/MN52L0NA.TXT /.PS
anvendelse for måling av display output



TUB-testplansje MN52; Computergrafikk og fargemetrikk
Bildeserie MN52, 3D=0, de=0

input: rgb/cmyk -> rgb/cmyk
output: ingen endring



se lignende filer: http://farbe.li.tu-berlin.de/MN52/MN52.HTM
http://130.149.60.45/~farbmetrik eller http://farbe.li.tu-berlin.de

TUB registrering: 20190801-MN52/MN52L0NA.TXT /.PS
anvendelse for måling av display output, ingen separasjon

TUB materiell: code=rhadta



fargemangfold: uordnet

5-003100-L0 MN520-10, B2_02

akromatiske farger: uordnet

5-003100-L0 MN520-20, B2_03

apparatfarge: blå B_d
kriterium: hverken... eller...

grønnlig ... blå B_d ... rødlig

hex kode for rgb_d og cmy_d

0BF _d	07F _d	03F _d	00F _d	30F _d	70F _d	B0F _d
F40 _d	F80 _d	FC0 _d	FF0 _d	CF0 _d	8F0 _d	4F0 _d

5-003100-L0 MN521-10, B2_10

apparatfarge: grønn G_d
kriterium: hverken... eller...

blålig ... grønn G_d ... gullig

hex kode for rgb_d og cmy_d

0FB _d	0F7 _d	0F3 _d	0F0 _d	3F0 _d	7F0 _d	BF0 _d
F04 _d	F08 _d	F0C _d	F0F _d	C0F _d	80F _d	40F _d

5-003100-L0 MN521-20, B2_11

kulørte farger: uordnet

5-003100-L0 MN520-30, B2_04

fargemangfold: rgb_d , cmy_d code

BBB _d	0FF _d	00F _d	F0F _d	777 _d	070 _d	707 _d	F77 _d
444 _d	F00 _d	FF0 _d	0F0 _d	888 _d	F88 _d	8F8 _d	088 _d
07F _d	770 _d	70F _d	333 _d	0F7 _d	F70 _d	F07 _d	077 _d
F80 _d	88F _d	8F0 _d	CCC _d	F08 _d	08F _d	0F8 _d	F88 _d
000 _d	F00 _d	7FF _d	FF7 _d	FF0 _d	007 _d	700 _d	FFF _d
FFF _d	0FF _d	800 _d	008 _d	00F _d	FF8 _d	8FF _d	000 _d

5-003100-L0 MN520-40, B2_05

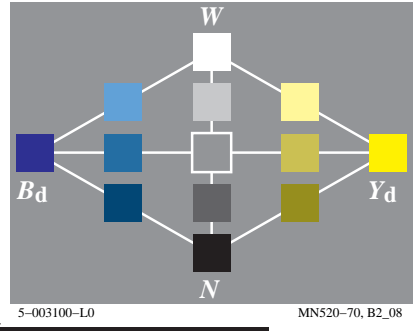
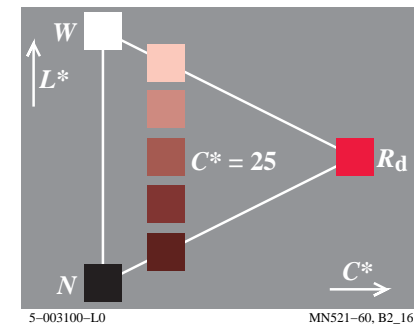
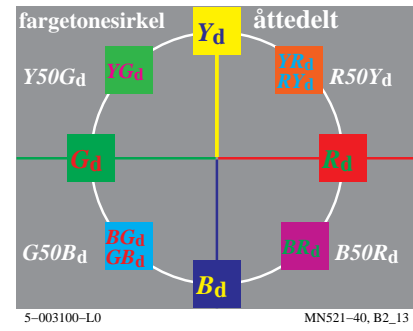
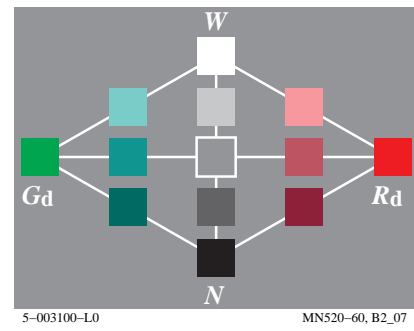
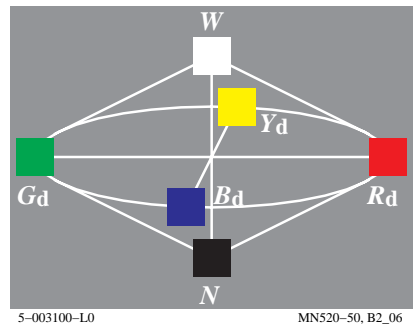
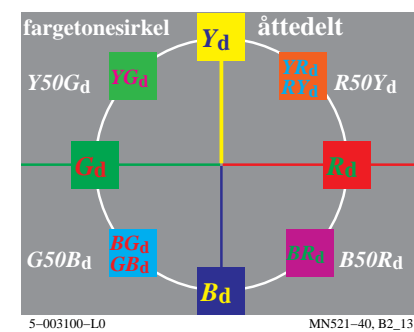
apparatfarge: rød R_d
kriterium: hverken... eller...

blålig ... rød R_d ... gullig

hex kode for rgb_d og cmy_d

F0B _d	F07 _d	F03 _d	F00 _d	F30 _d	F70 _d	FB0 _d
0F4 _d	0F8 _d	0FC _d	0FF _d	0CF _d	08F _d	04F _d

5-003100-L0 MN521-30, B2_12



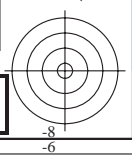
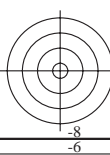
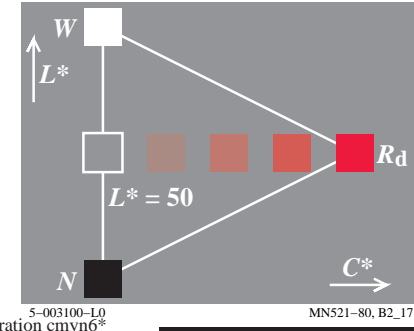
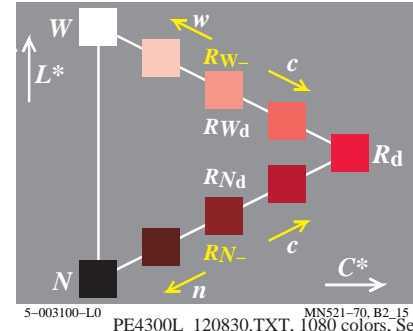
apparatfarge: gul Y_d
kriterium: hverken... eller...

grønnlig ... gul Y_d ... rødlig

hex kode for rgb_d og cmy_d

9F0 _d	BF0 _d	DF0 _d	FF0 _d	FD0 _d	FB0 _d	F90 _d
60F _d	40F _d	20F _d	00F _d	02F _d	04F _d	06F _d

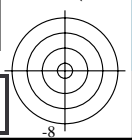
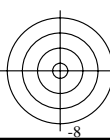
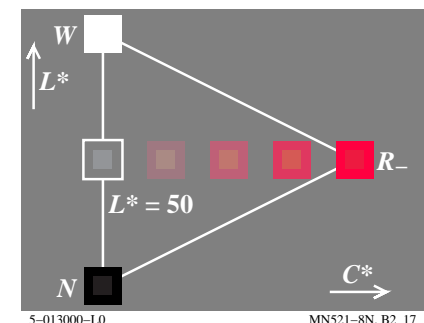
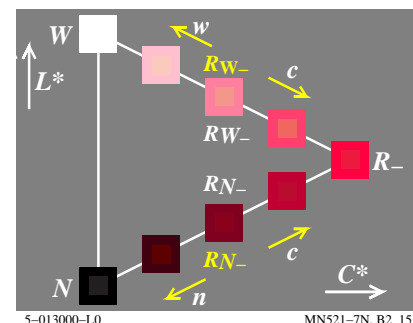
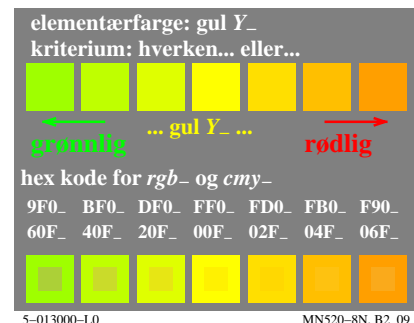
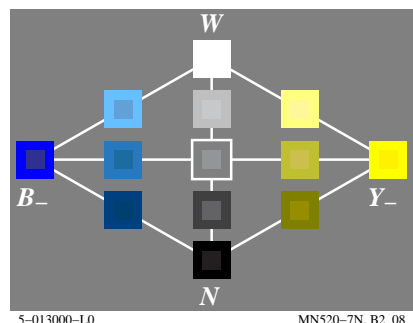
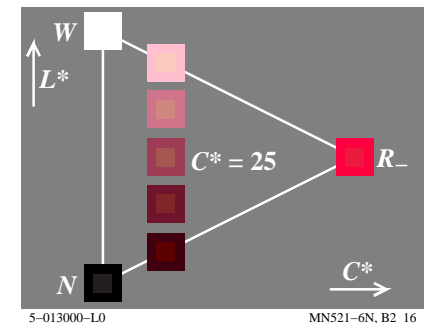
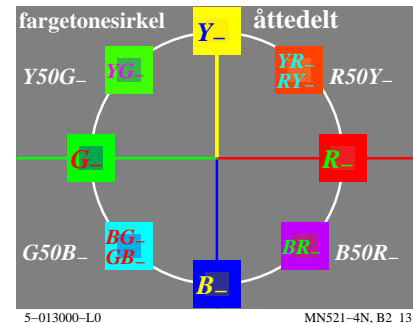
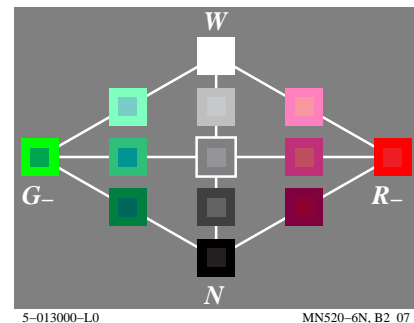
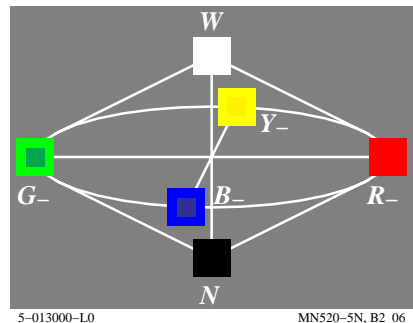
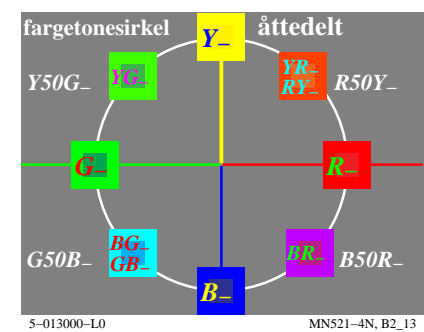
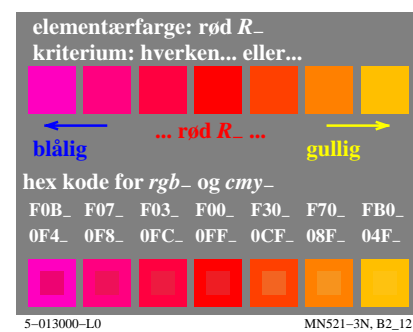
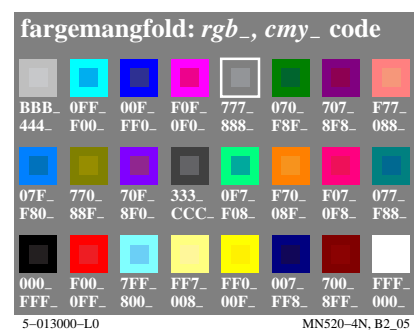
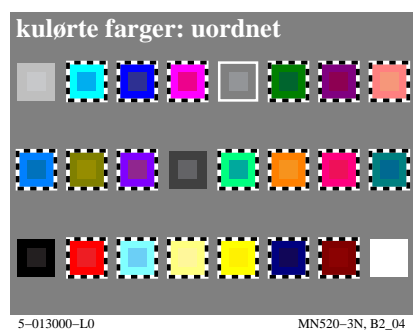
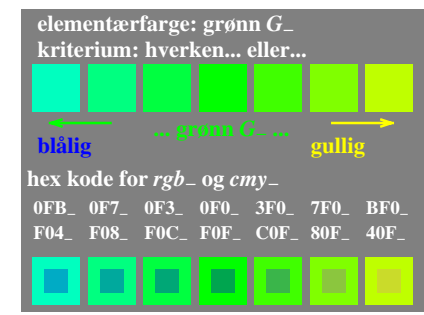
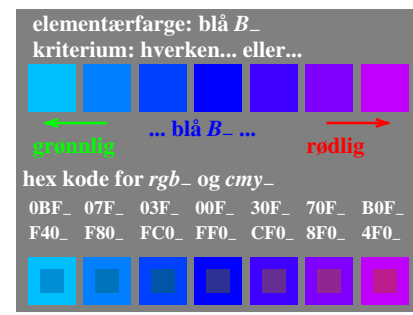
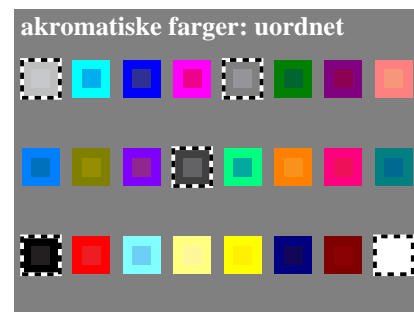
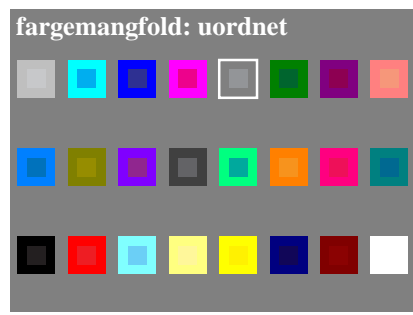
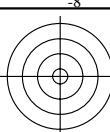
5-003100-L0 MN520-80, B2_09



http://farbe.li.tu-berlin.de/MN52/MN52L0NA.TXT /.PS; start output
N: ingen 3D-linearisering (OL) i fil (F) eller PS-startup (S), side 1/2

se lignende filer: <http://farbe.li.tu-berlin.de/MN52/MN52.HTM>
<http://130.149.60.45/~farbmetrik> eller <http://farbe.li.tu-berlin.de>

TUB registrering: 20190801-MN52/MN52L0NA.TXT /.PS
anvendelse for måling av display output



TUB-testplansje MN52; Computergrafikk og fargemetrikk
Bildeserie MN52, 3D=0, de=1

input: rgb/cmyk -> rgb/cmyk
output: ingen endring



se lignende filer: <http://farbe.li.tu-berlin.de/MN52/MN52.HTM>
<http://130.149.60.45/~farbmetrik> eller <http://farbe.li.tu-berlin.de>

TUB registrering: 20190801-MN52/MN52L0NA.TXT /.PS
anvendelse for måling av display output, ingen separasjon

TUB materiell: code=rhadta

