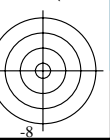
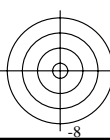
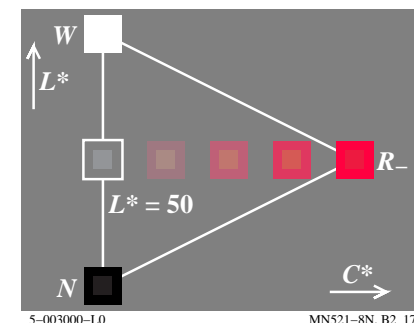
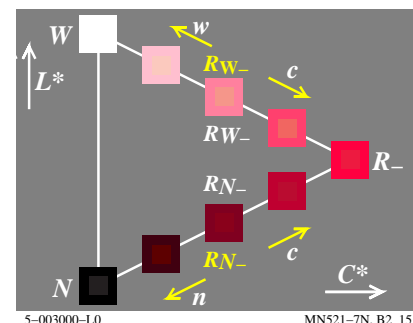
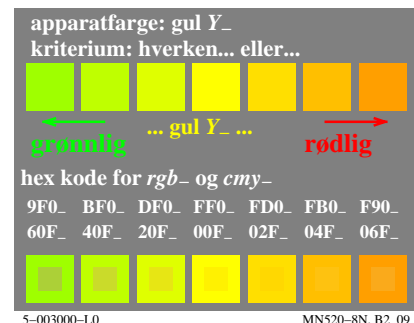
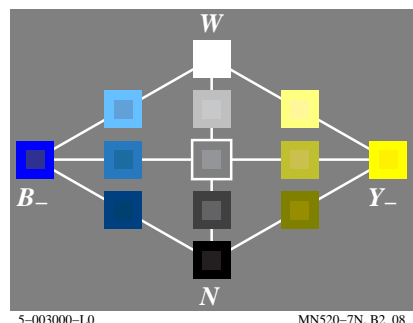
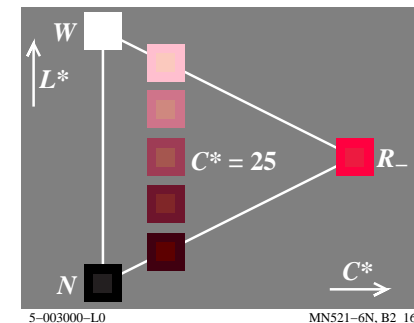
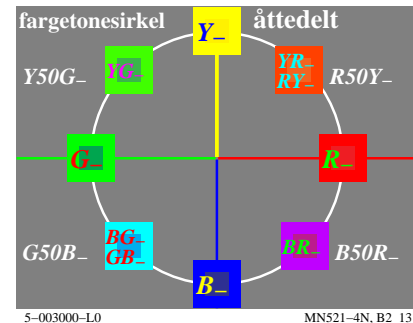
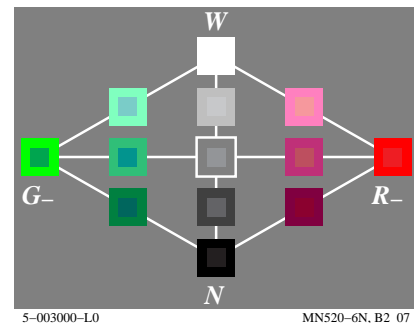
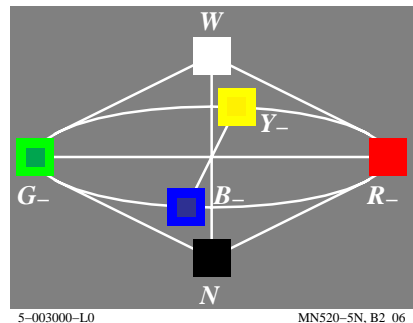
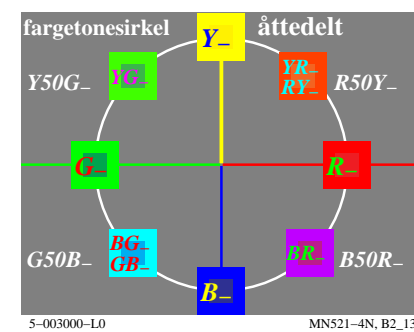
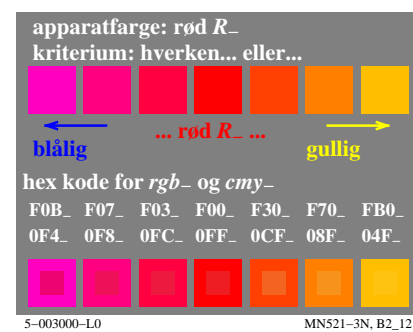
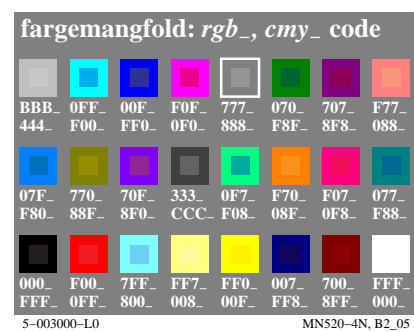
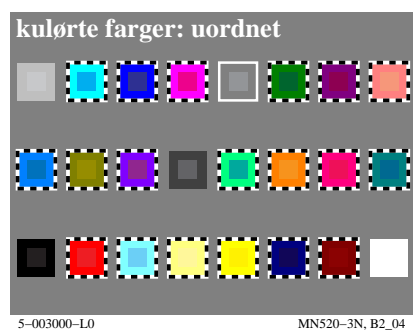
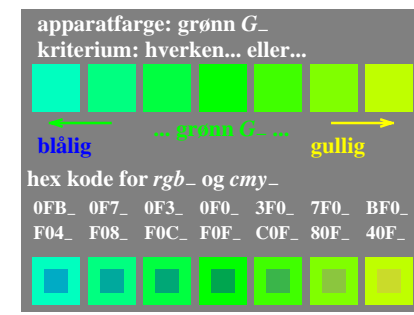
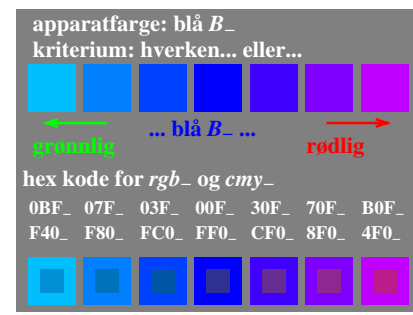
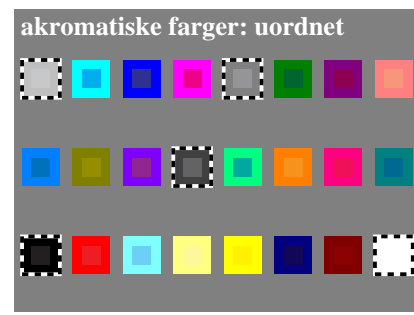
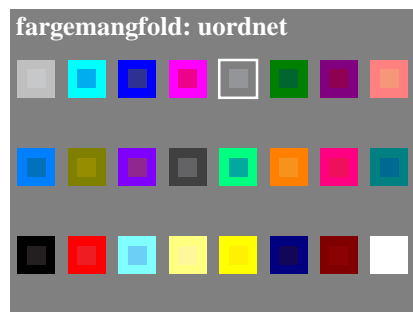


http://farbe.li.tu-berlin.de/MN52/MN52L0NP.PDF /.PS; start output  
N: ingen 3D-linearisering (OL) i fil (F) eller PS-startup (S), side 1/2

se lignende filer: <http://farbe.li.tu-berlin.de/MN52/MN52.HTM>  
<http://130.149.60.45/~farbmetrik> eller <http://farbe.li.tu-berlin.de>

TUB registrering: 20190801-MN52/MN52L0NP.PDF /.PS  
anvendelse for måling av display output



TUB-testplansje MN52; Computergrafikk og fargemetrikk  
Bildeserie MN52, 3D=0, de=0

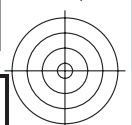
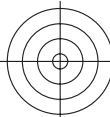
input: rgb/cmyk -> rgb/cmyk  
output: ingen endring



se lignende filer: http://farbe.li.tu-berlin.de/MN52/MN52.HTM  
http://130.149.60.45/~farbmetrik eller http://farbe.li.tu-berlin.de

TUB registrering: 20190801-MN52/MN52L0NP.PDF /.PS  
anvendelse for måling av display output, ingen separasjon

TUB materiell: code=rhadta



fargemangfold: uordnet

5-003100-L0 MN520-10, B2\_02

akromatiske farger: uordnet

5-003100-L0 MN520-20, B2\_03

apparatfarge: blå  $B_d$   
kriterium: hverken... eller...

grønnlig ... blå  $B_d$  ... rødlig

hex kode for  $rgb_d$  og  $cmy_d$

0BF <sub>d</sub>	07F <sub>d</sub>	03F <sub>d</sub>	00F <sub>d</sub>	30F <sub>d</sub>	70F <sub>d</sub>	B0F <sub>d</sub>
F40 <sub>d</sub>	F80 <sub>d</sub>	FC0 <sub>d</sub>	FF0 <sub>d</sub>	CF0 <sub>d</sub>	8F0 <sub>d</sub>	4F0 <sub>d</sub>

5-003100-L0 MN521-10, B2\_10

apparatfarge: grønn  $G_d$   
kriterium: hverken... eller...

blålig ... grønn  $G_d$  ... gullig

hex kode for  $rgb_d$  og  $cmy_d$

0FB <sub>d</sub>	0F7 <sub>d</sub>	0F3 <sub>d</sub>	0F0 <sub>d</sub>	3F0 <sub>d</sub>	7F0 <sub>d</sub>	BF0 <sub>d</sub>
F04 <sub>d</sub>	F08 <sub>d</sub>	F0C <sub>d</sub>	F0F <sub>d</sub>	C0F <sub>d</sub>	80F <sub>d</sub>	40F <sub>d</sub>

5-003100-L0 MN521-20, B2\_11

kulørte farger: uordnet

5-003100-L0 MN520-30, B2\_04

fargemangfold:  $rgb_d$ ,  $cmy_d$  code

BBB <sub>d</sub>	0FF <sub>d</sub>	00F <sub>d</sub>	F0F <sub>d</sub>	777 <sub>d</sub>	070 <sub>d</sub>	707 <sub>d</sub>	F77 <sub>d</sub>
444 <sub>d</sub>	F00 <sub>d</sub>	FF0 <sub>d</sub>	0F0 <sub>d</sub>	888 <sub>d</sub>	F88 <sub>d</sub>	8F8 <sub>d</sub>	088 <sub>d</sub>
07F <sub>d</sub>	770 <sub>d</sub>	70F <sub>d</sub>	333 <sub>d</sub>	0F7 <sub>d</sub>	F70 <sub>d</sub>	F07 <sub>d</sub>	077 <sub>d</sub>
F80 <sub>d</sub>	88F <sub>d</sub>	8F0 <sub>d</sub>	CCC <sub>d</sub>	F08 <sub>d</sub>	08F <sub>d</sub>	0F8 <sub>d</sub>	F88 <sub>d</sub>
000 <sub>d</sub>	F00 <sub>d</sub>	7FF <sub>d</sub>	FF7 <sub>d</sub>	FF0 <sub>d</sub>	007 <sub>d</sub>	700 <sub>d</sub>	FFF <sub>d</sub>
FFF <sub>d</sub>	0FF <sub>d</sub>	800 <sub>d</sub>	008 <sub>d</sub>	00F <sub>d</sub>	FF8 <sub>d</sub>	8FF <sub>d</sub>	000 <sub>d</sub>

5-003100-L0 MN520-40, B2\_05

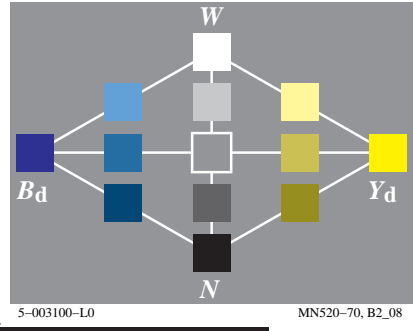
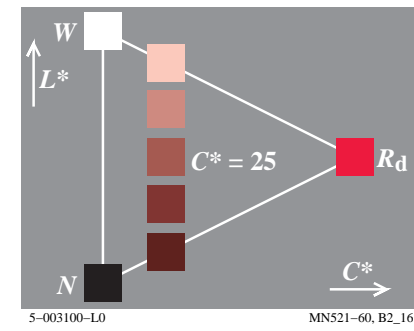
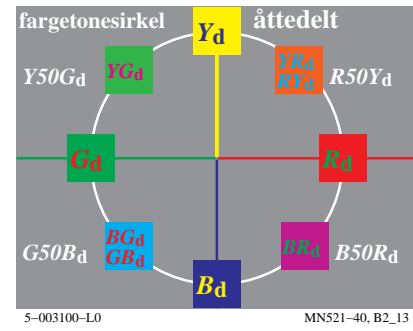
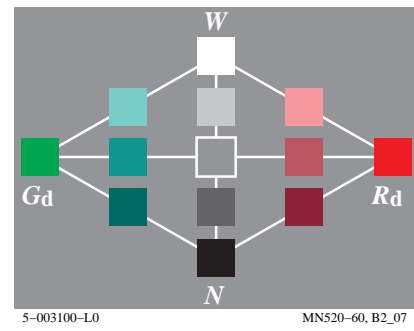
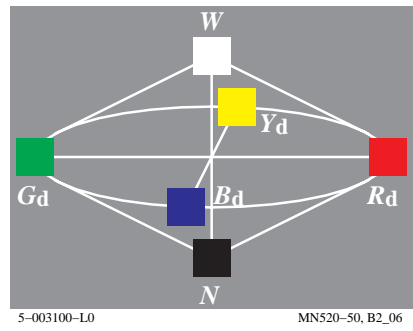
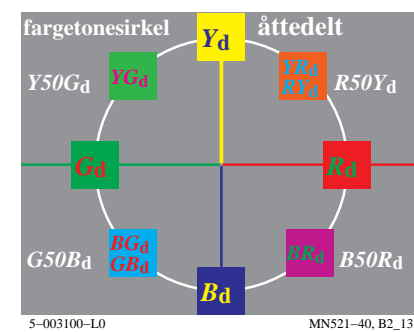
apparatfarge: rød  $R_d$   
kriterium: hverken... eller...

blålig ... rød  $R_d$  ... gullig

hex kode for  $rgb_d$  og  $cmy_d$

F0B <sub>d</sub>	F07 <sub>d</sub>	F03 <sub>d</sub>	F00 <sub>d</sub>	F30 <sub>d</sub>	F70 <sub>d</sub>	FB0 <sub>d</sub>
0F4 <sub>d</sub>	0F8 <sub>d</sub>	0FC <sub>d</sub>	0FF <sub>d</sub>	0CF <sub>d</sub>	08F <sub>d</sub>	04F <sub>d</sub>

5-003100-L0 MN521-30, B2\_12



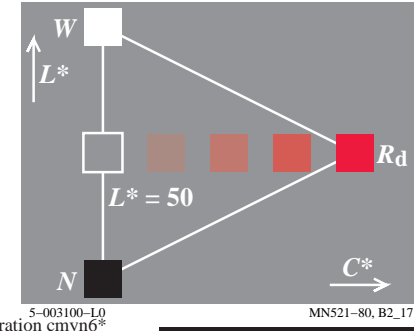
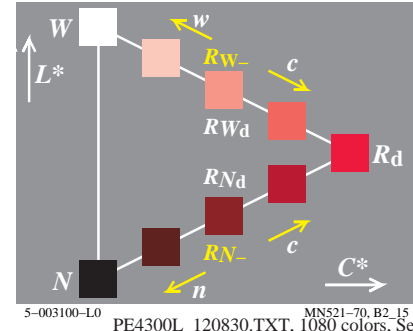
apparatfarge: gul  $Y_d$   
kriterium: hverken... eller...

grønnlig ... gul  $Y_d$  ... rødlig

hex kode for  $rgb_d$  og  $cmy_d$

9F0 <sub>d</sub>	BF0 <sub>d</sub>	DF0 <sub>d</sub>	FF0 <sub>d</sub>	FD0 <sub>d</sub>	FB0 <sub>d</sub>	F90 <sub>d</sub>
60F <sub>d</sub>	40F <sub>d</sub>	20F <sub>d</sub>	00F <sub>d</sub>	02F <sub>d</sub>	04F <sub>d</sub>	06F <sub>d</sub>

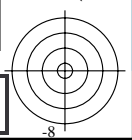
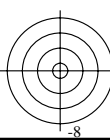
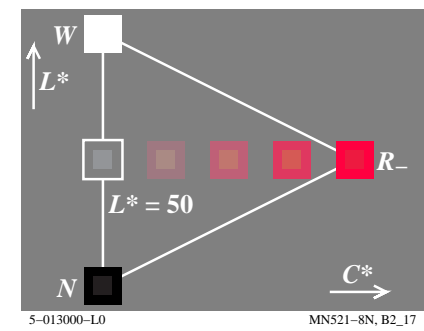
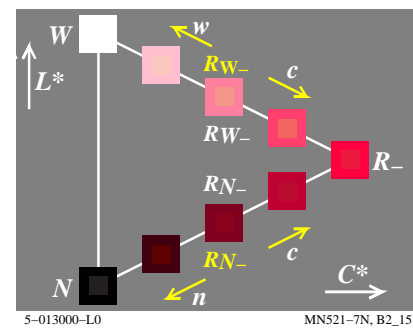
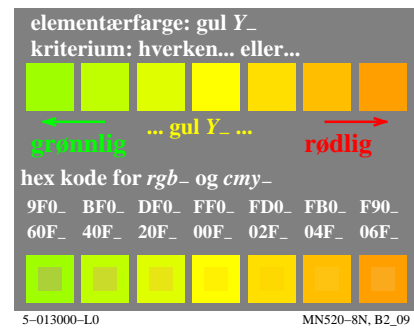
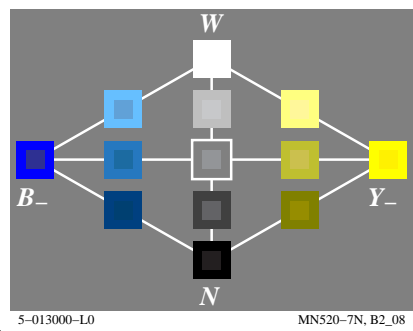
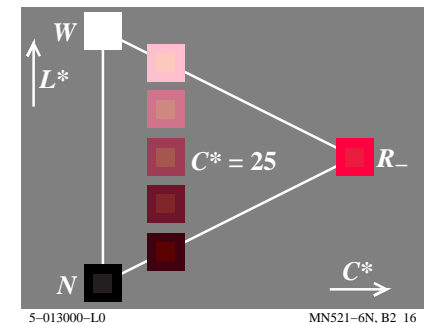
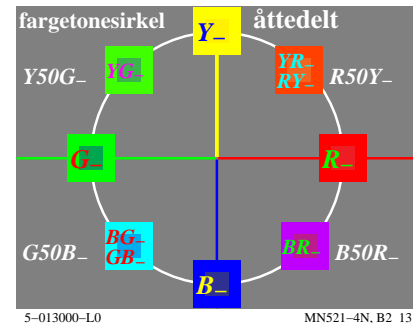
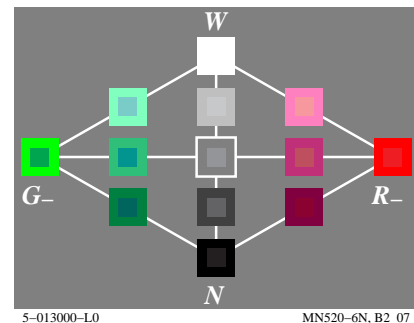
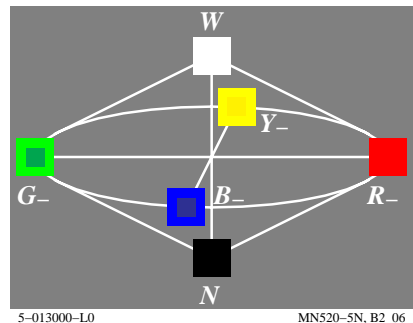
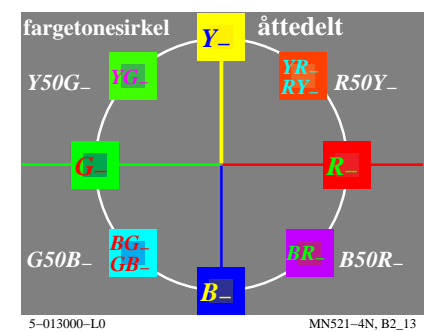
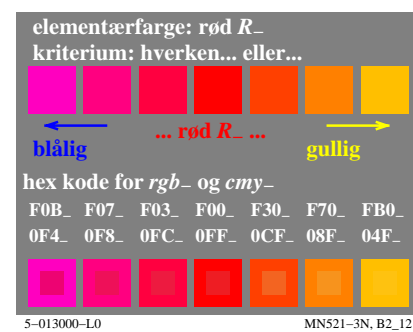
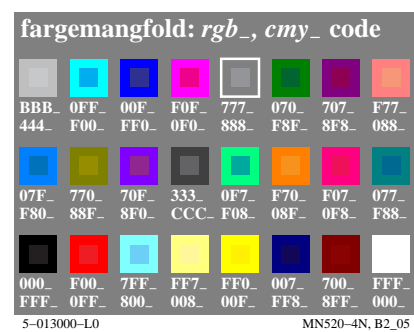
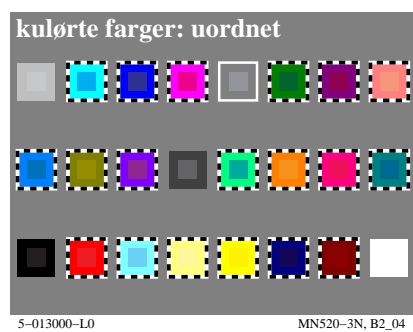
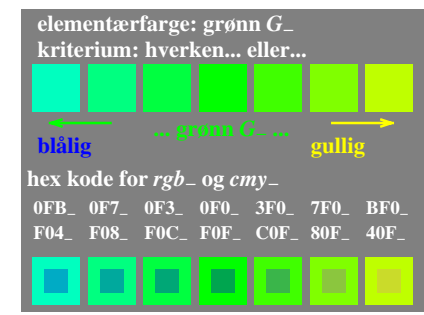
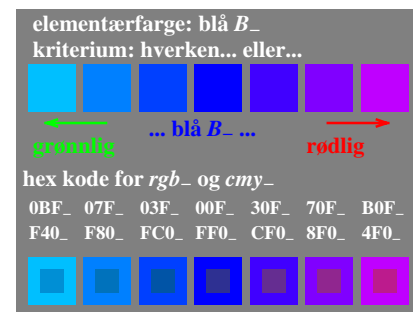
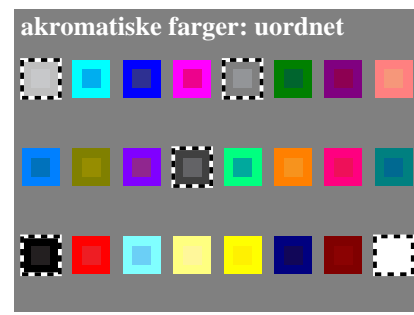
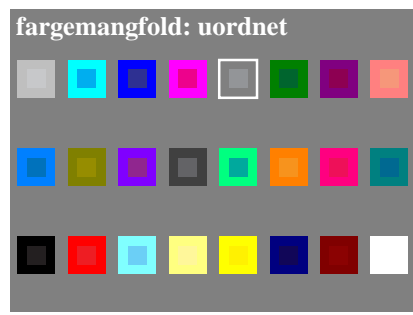
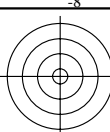
5-003100-L0 MN520-80, B2\_09



http://farbe.li.tu-berlin.de/MN52/MN52L0NP.PDF /.PS; start output  
N: ingen 3D-linearisering (OL) i fil (F) eller PS-startup (S), side 1/2

se lignende filer: <http://farbe.li.tu-berlin.de/MN52/MN52.HTM>  
<http://130.149.60.45/~farbmetrik> eller <http://farbe.li.tu-berlin.de>

TUB registrering: 20190801-MN52/MN52L0NP.PDF /.PS  
anvendelse for måling av display output



TUB-testplansje MN52; Computergrafikk og fargemetrikk  
Bildeserie MN52, 3D=0, de=1

input: rgb/cmyk -> rgb/cmyk  
output: ingen endring



se lignende filer: http://farbe.li.tu-berlin.de/MN52/MN52.HTM  
http://130.149.60.45/~farbmetrik eller http://farbe.li.tu-berlin.de

TUB registrering: 20190801-MN52/MN52L0NP.PDF /.PS  
anvendelse for måling av display output, ingen separasjon

TUB materiell: code=rhadata

