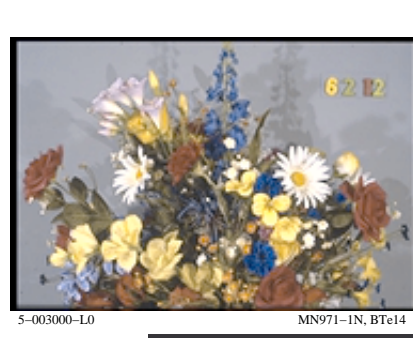
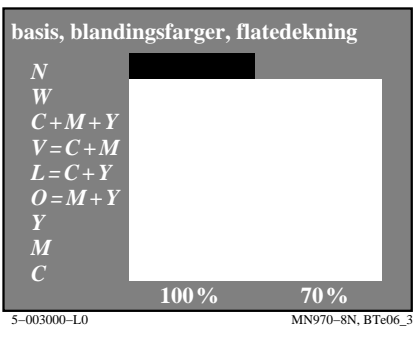
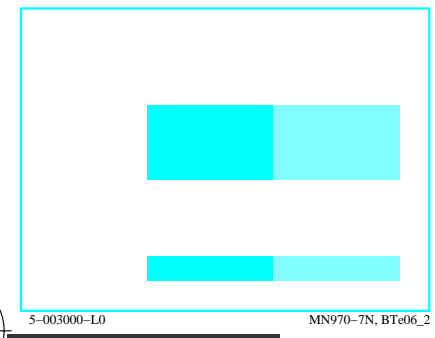
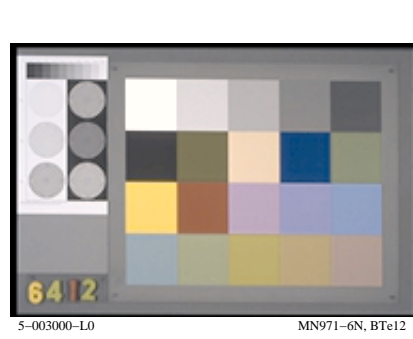
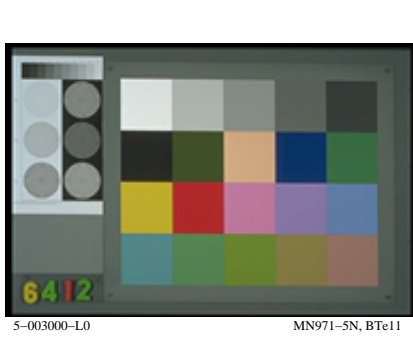
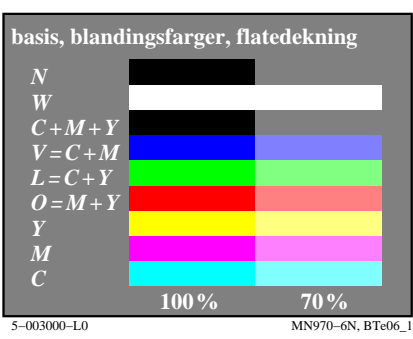
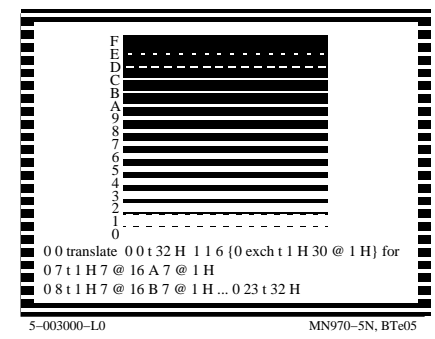
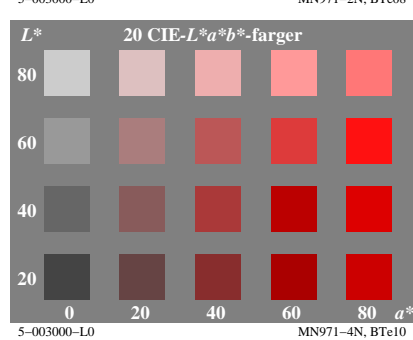
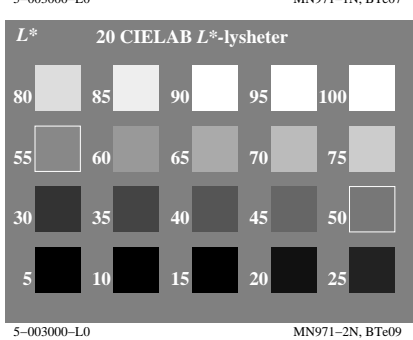
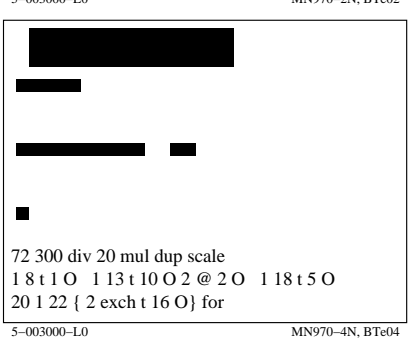
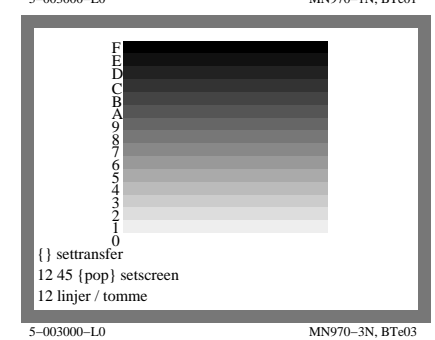
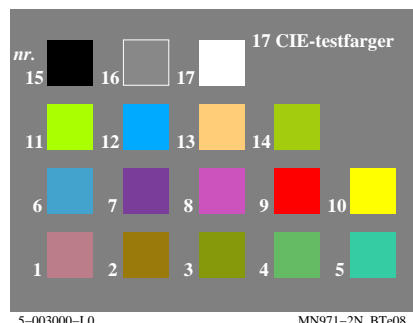
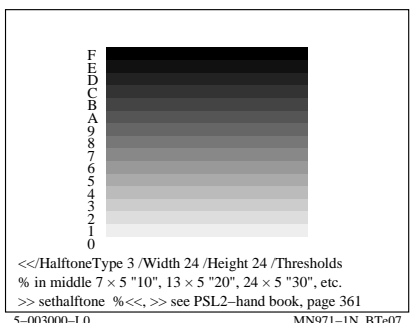
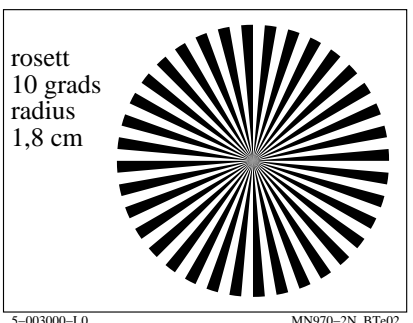
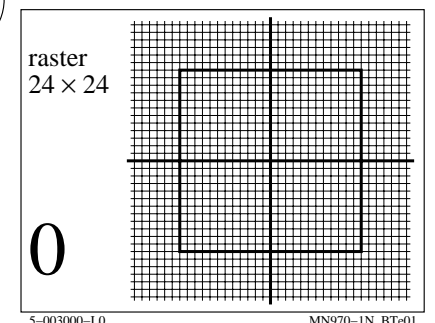
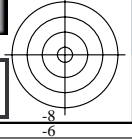
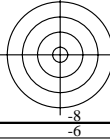
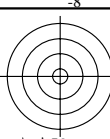


http://farbe.li.tu-berlin.de/MN97/MN97L0N0.TXT /.PS; start output
N: ingen 3D-linearisering (OL) i fil (F) eller PS-startup (S), side 1/1

se lignende filer: <http://farbe.li.tu-berlin.de/MN97/MN97.HTM>
<http://130.149.60.45/~farbmetrik> eller <http://farbe.li.tu-berlin.de>

TUB registrering: 20190801-MN97/MN97L0N0.TXT /.PS
anvendelse for måling av display output

TUB materiell: code=rh4da



TUB-testplansje MN97; Computergrafikk og fargemetrikk
Bildeserie MN97, 3D=0, de=0

input: rgb/cmyk -> rgb/cmyk
output: ingen endring