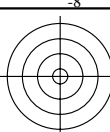


vea archivos semejantes: http://130.149.60.45/~farbmetrik/MS02/MS02.HTM información técnica: http://www.ps.bam.de o http://130.149.60.45/~farbmetrik

TUB matrícula: 20130201-MS02/MS02LONP.PDF /.PS aplicación para la medida de display output

TUB material: code=rh4ta



variedad de colores: orden aleatorio

2-003030-L0 MS020-1N, B2_02

colores acromáticos: orden aleatorio

2-003030-L0 MS020-2N, B2_03

color de dispositivo: azul B_ criterio: ni... ni...

verdoso ... azul B_ ... rojizo

código hexadecimal para rgb_ y cmy_

0BF_	07F_	03F_	00F_	30F_	70F_	B0F_
F40_	F80_	FC0_	FF0_	CF0_	8F0_	4F0_

2-003030-L0 MS021-1N, B2_10

color de dispositivo: verde G_ criterio: ni... ni

azulado ... verde G_ ... amarillento

código hexadecimal para rgb_ y cmy_

0FB_	0F7_	0F3_	0F0_	3F0_	7F0_	BF0_
F04_	F08_	F0C_	F0F_	C0F_	80F_	40F_

2-003030-L0 MS021-2N, B2_11

colores cromáticos: orden aleatoria

2-003030-L0 MS020-3N, B2_04

variedad de colores: rgb_, cmy_ código

BBB_	0FF_	00F_	F0F_	777_	070_	707_	F77_
444_	F00_	FF0_	0F0_	888_	F8F_	8F8_	088_
07F_	770_	70F_	333_	0F7_	F70_	F07_	077_
F80_	88F_	8F0_	CCC_	F08_	08F_	0F8_	F88_
000_	F00_	7FF_	FF7_	FF0_	007_	700_	FFF_
FFF_	0FF_	800_	008_	00F_	FF8_	8FF_	000_

2-003030-L0 MS020-4N, B2_05

color de dispositivo: rojo R_ criterio: ni... ni...

azulado ... rojo R_ ... amarillento

código hexadecimal para rgb_ y cmy_

F0B_	F07_	F03_	F00_	F30_	F70_	FB0_
0F4_	0F8_	0FC_	0FF_	0CF_	08F_	04F_

2-003030-L0 MS021-3N, B2_12

círculo de tono Y_ 8 pasos

Y50G_ YG_ YR_ R50Y_ R_ R_ B_ B_ G_ G_ G50B_ BG_ GB_ B50R_ B_

2-003030-L0 MS021-4N, B2_13

Color calibration chart with 12 patches (W, Y, R, B, G, N) and connecting lines.

2-003030-L0 MS020-5N, B2_06

Color calibration chart with 12 patches (W, Y, R, B, G, N) and connecting lines.

2-003030-L0 MS020-6N, B2_07

círculo de tono Y_ 16 pasos

Y25G_ Y_ YR_ R75Y_ R_ R_ B_ B_ G_ G_ G25B_ G_ G50B_ B50R_ B_ B75R_ B_ B25R_ B_ G75B_ G_

2-003030-L0 MS021-5N, B2_14

Color calibration chart showing a grayscale ramp and a color patch (R).

$C^* = 25$

2-003030-L0 MS021-6N, B2_16

Color calibration chart with 12 patches (W, Y, R, B, G, N) and connecting lines.

2-003030-L0 MS020-7N, B2_08

color de dispositivo: amarillo Y_ criterio: ni... ni...

verdoso ... amarillo Y_ ... rojizo

código hexadecimal para rgb_ y cmy_

9F0_	BF0_	DF0_	FF0_	FD0_	FB0_	F90_
60F_	40F_	20F_	00F_	02F_	04F_	06F_

2-003030-L0 MS020-8N, B2_09

Color calibration chart showing a grayscale ramp and a color patch (R).

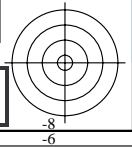
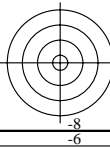
L^* C^*

2-003030-L0 MS021-7N, B2_15

Color calibration chart showing a grayscale ramp and a color patch (R).

$L^* = 50$ C^*

2-003030-L0 MS021-8N, B2_17



http://130.149.60.45/~farbmetrik/MS02/MS02LONP.PDF /.PS; salida de transferencia N: ninguna 3D-linealización (OL) en archivo (F) o PS-startup (S), página 2/2

vea archivos semejantes: http://130.149.60.45/~farbmetrik/MS02/MS02.HTM información técnica: http://www.ps.bam.de o http://130.149.60.45/~farbmetrik

TUB matrícula: 20130201-MS02/MS02LONP.PDF /.PS aplicación para la medida de display output, ninguna separación TUB material: code=rh4ta

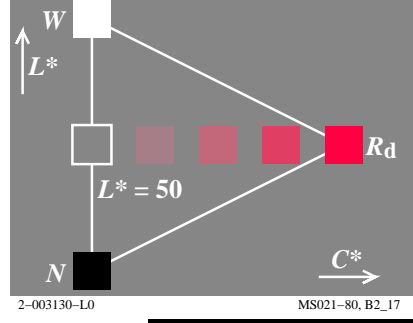
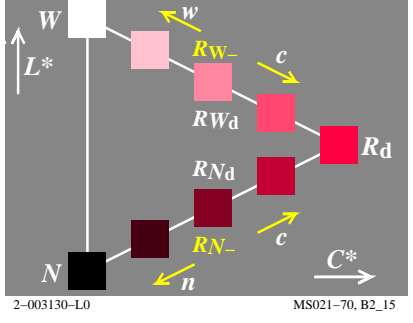
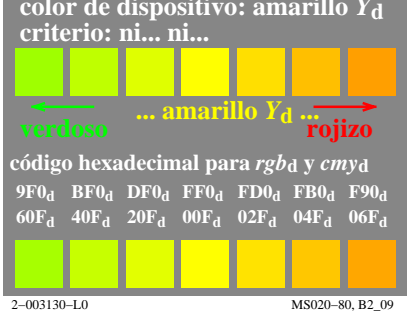
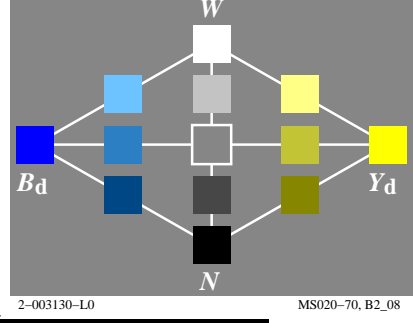
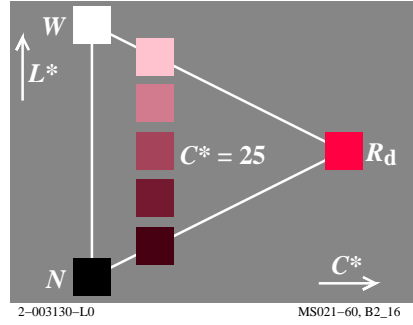
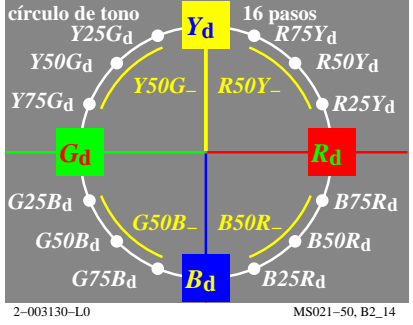
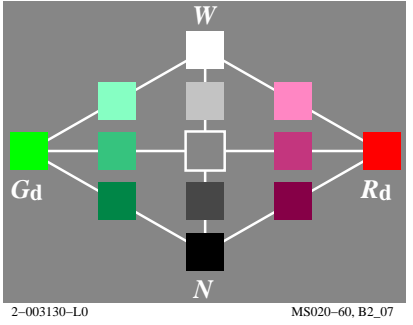
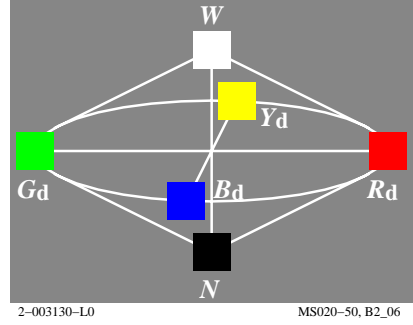
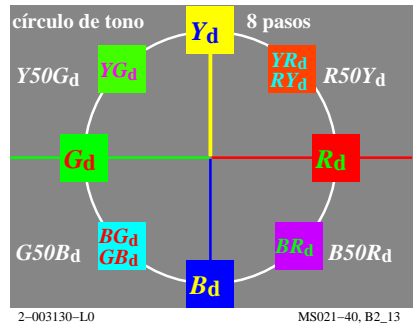
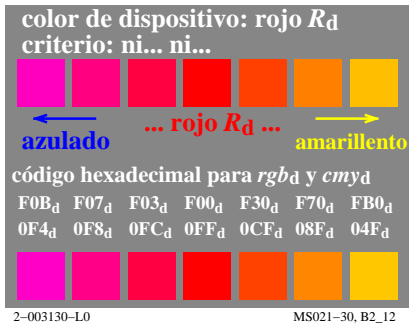
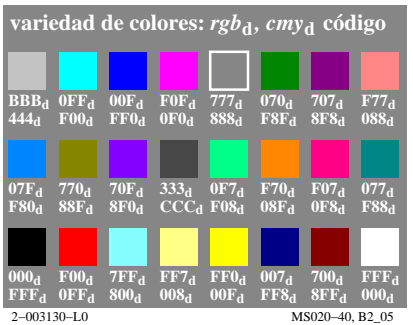
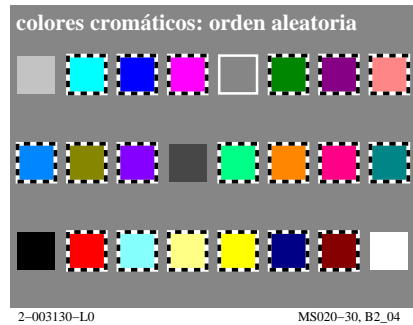
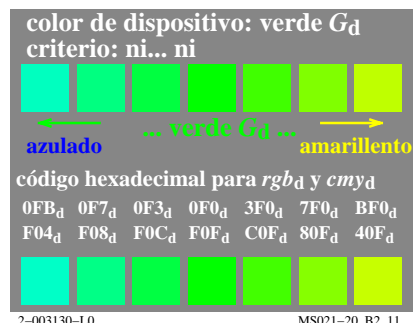
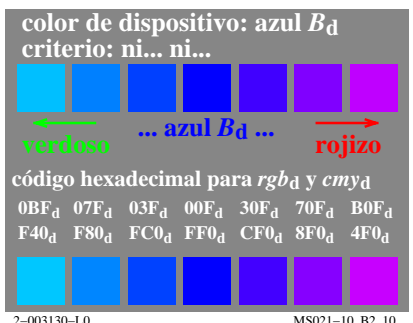
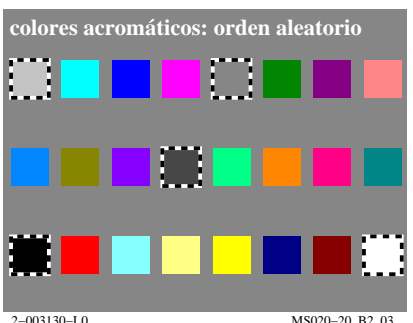
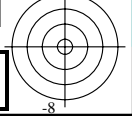


Gráfico TUB-MS02; la gráfica de Ordenador y colorimetry Imagine la serie MS02, 3D=0, de=0, sRGB

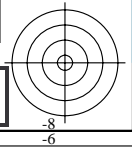
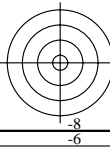
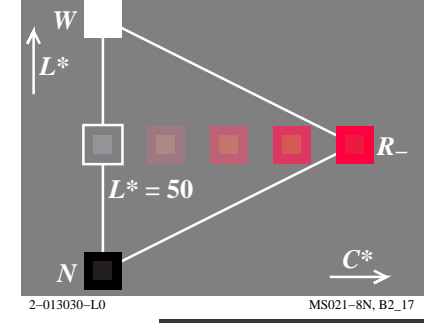
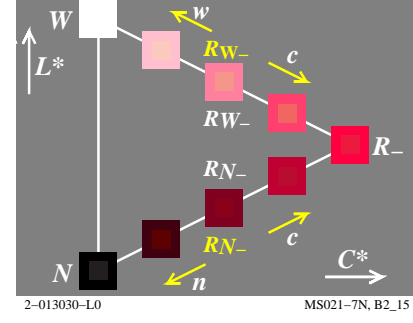
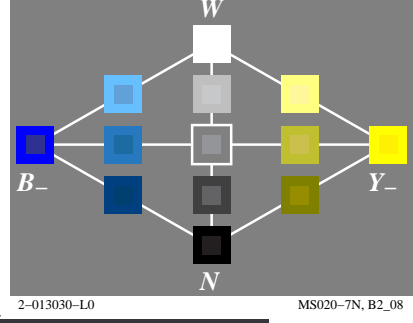
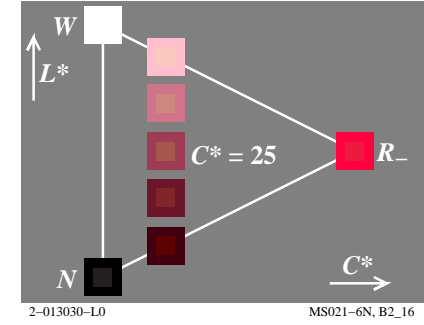
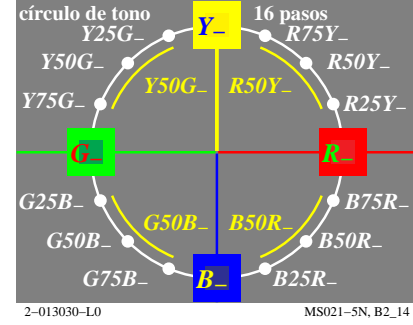
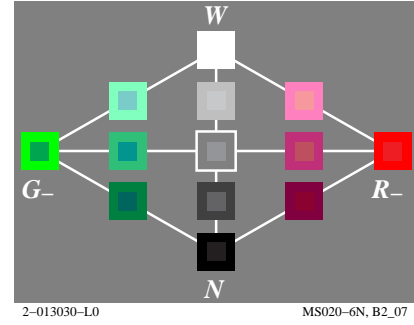
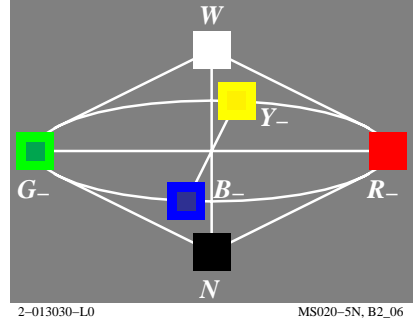
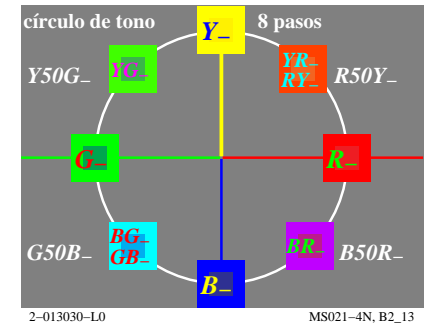
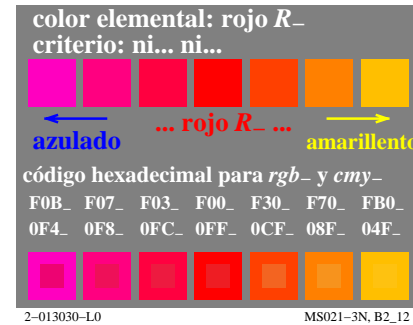
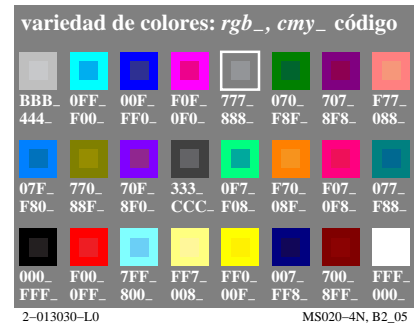
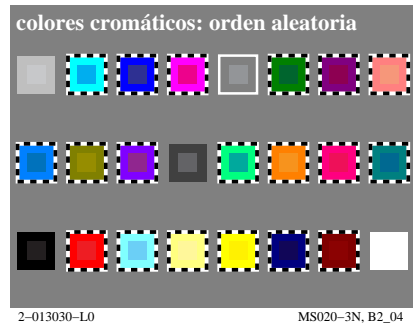
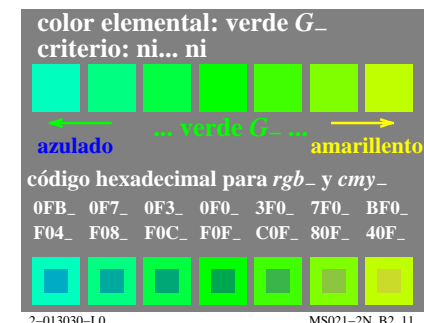
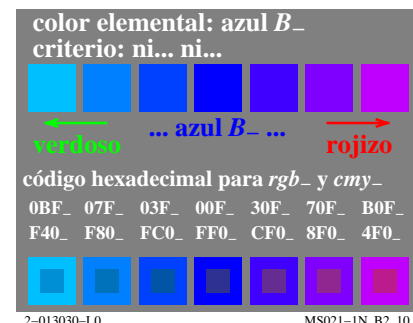
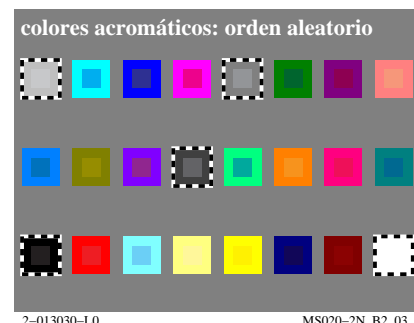
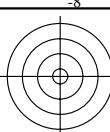
entrada: $rgb/cmyk \rightarrow rgb_d$ salida: transfiera a rgb_d



vea archivos semejantes: http://130.149.60.45/~farbmetrik/MS02/MS02.HTM información técnica: http://www.ps.bam.de o http://130.149.60.45/~farbmetrik

TUB matrícula: 20130201-MS02/MS02LONP.PDF /.PS aplicación para la medida de display output

TUB material: code=rh4ta



http://130.149.60.45/~farbmetrik/MS02/MS02LONP.PDF /.PS; salida de transferencia N: ninguna 3D-linealización (OL) en archivo (F) o PS-startup (S), página 2/2

vea archivos semejantes: http://130.149.60.45/~farbmetrik/MS02/MS02.HTM información técnica: http://www.ps.bam.de o http://130.149.60.45/~farbmetrik

TUB matrícula: 20130201-MS02/MS02LONP.PDF /.PS aplicación para la medida de display output, ninguna separación

TUB material: code=rh4ta

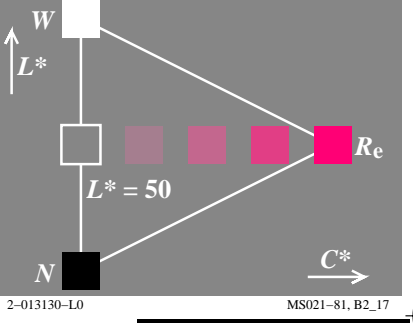
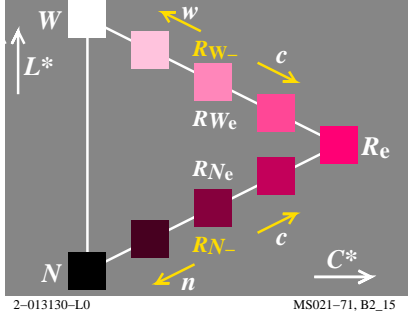
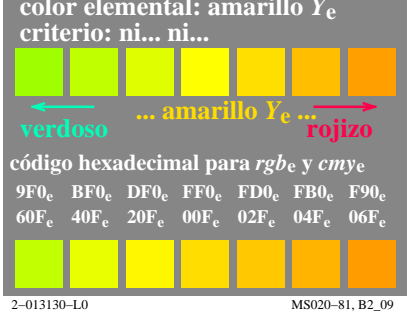
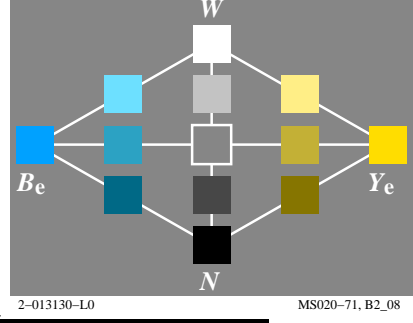
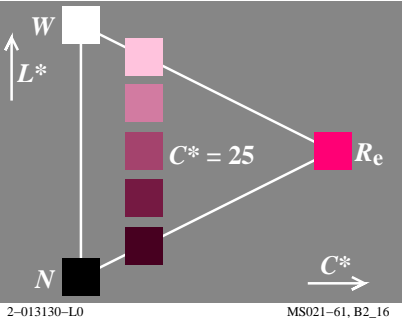
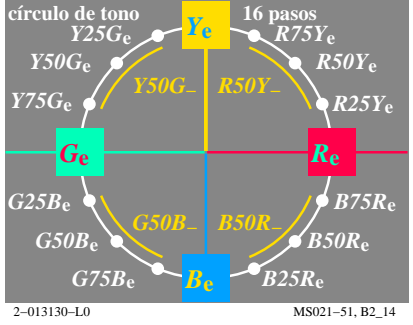
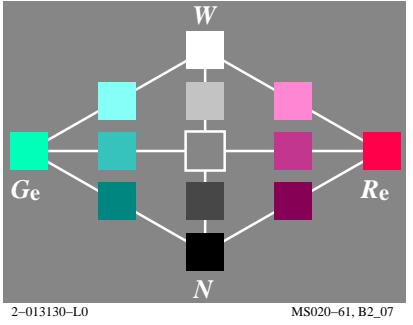
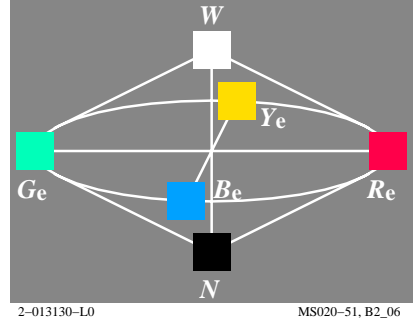
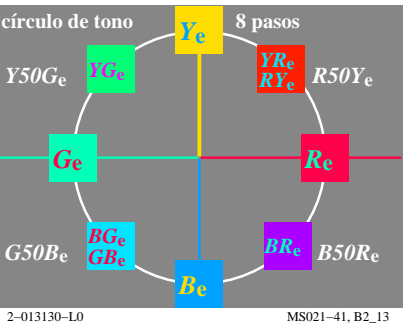
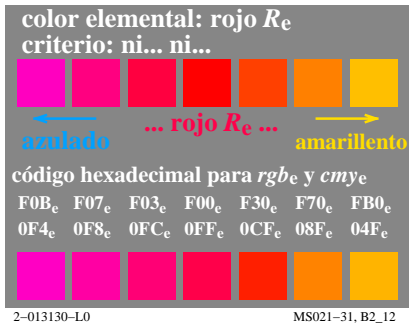
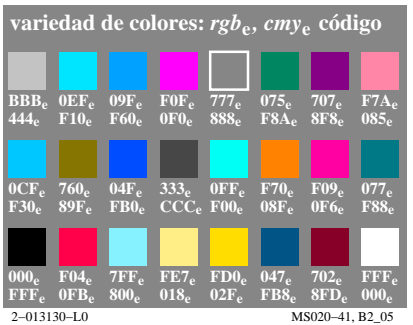
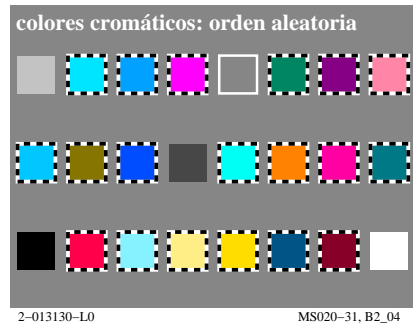
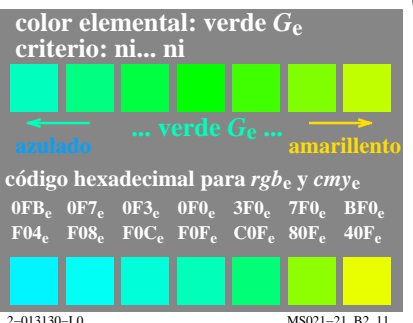
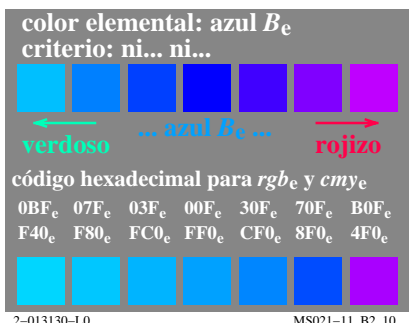
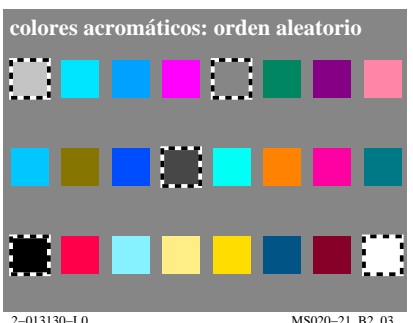


Gráfico TUB-MS02; la gráfica de Ordenador y colorimetry Imagine la serie MS02, 3D=0, de=1, sRGB

entrada: $rgb/cmyk \rightarrow rgb_e$ salida: transfiera a rgb_e

