

vea archivos semejantes: http://130.149.60.45/~farbmetrik/MS06/MS06.HTM información técnica: http://www.ps.bam.de o http://130.149.60.45/~farbmetrik

TUB matrícula: 20130201-MS06/MS06LONP.PDF /.PS aplicación para la medida de display output

TUB material: code=rh4ta

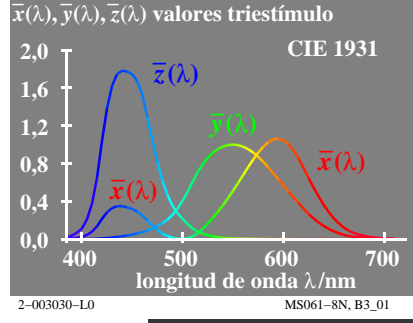
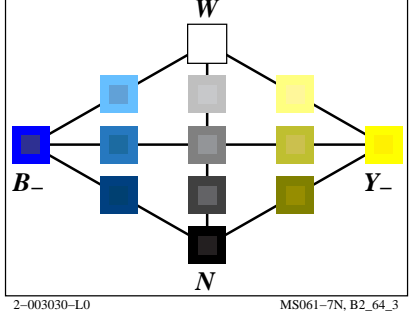
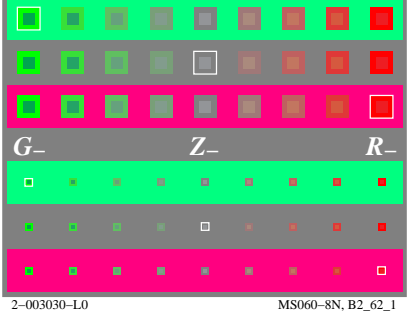
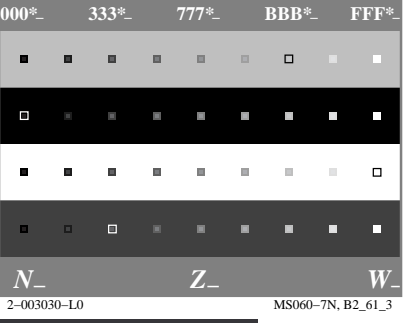
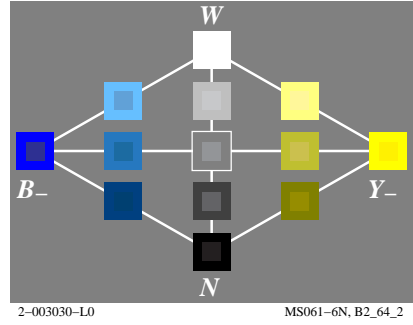
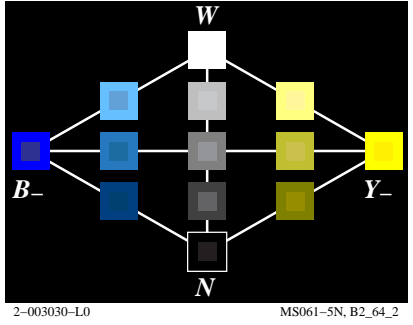
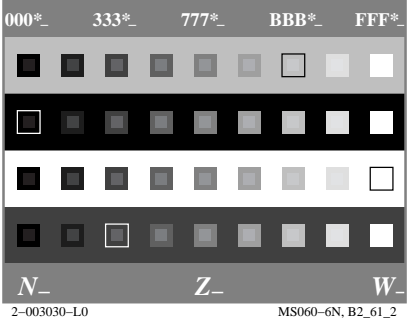
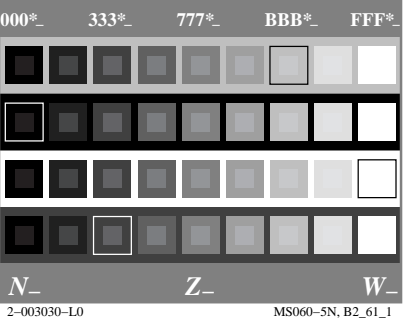
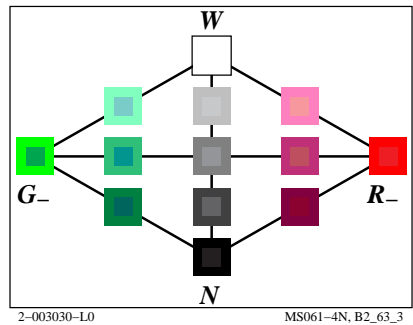
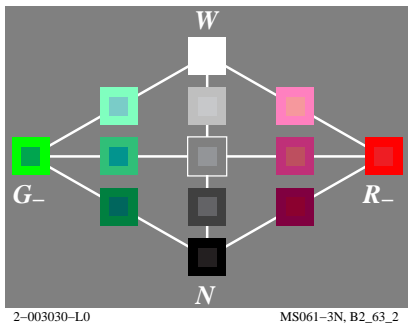
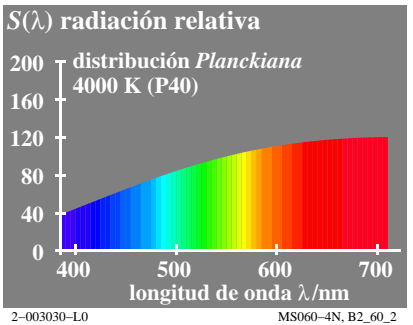
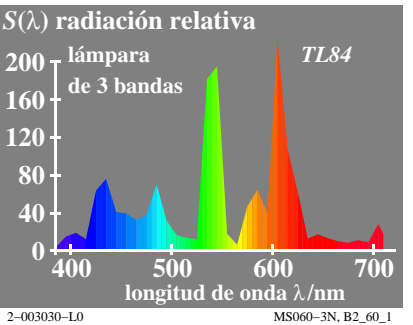
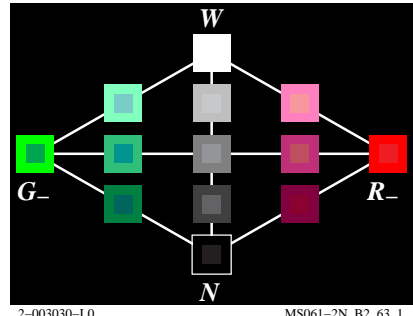
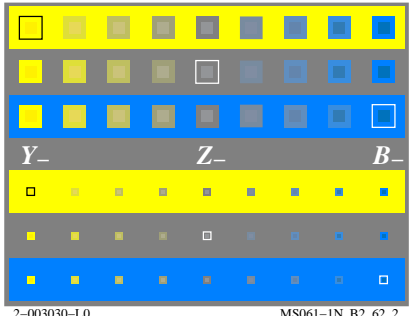
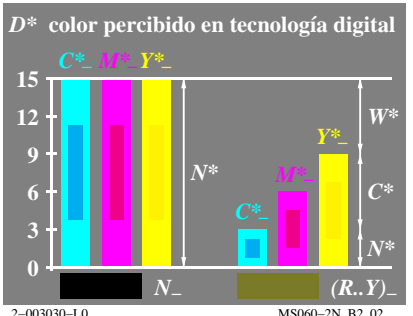
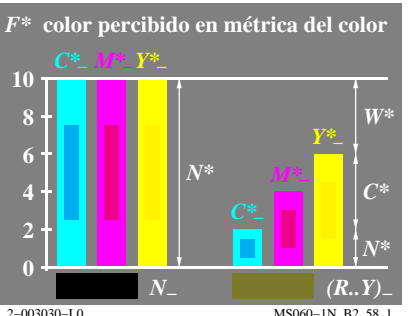
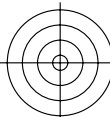
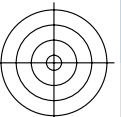
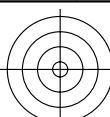


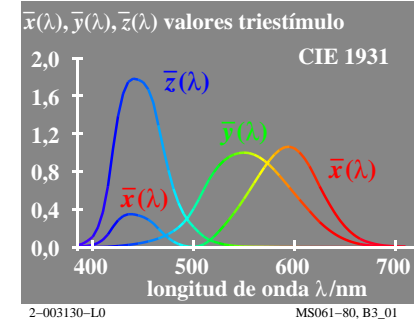
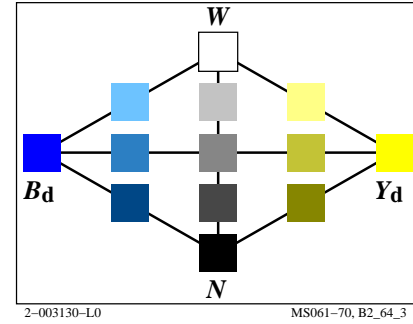
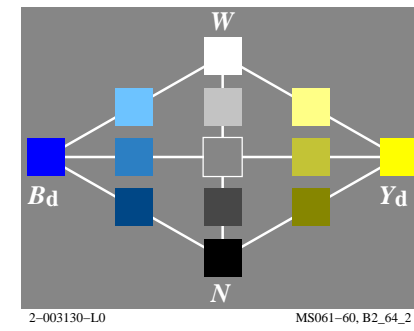
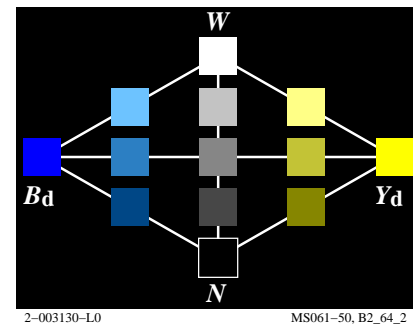
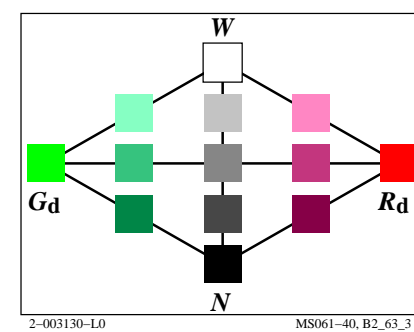
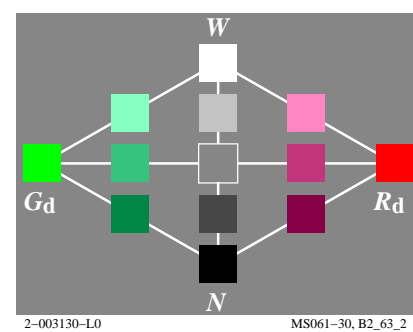
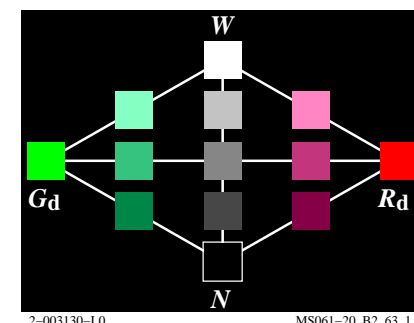
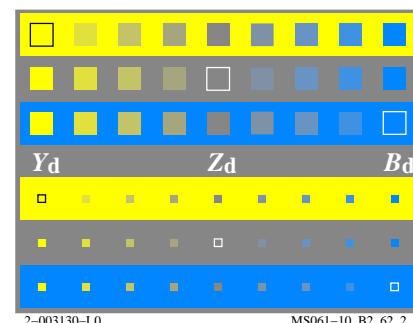
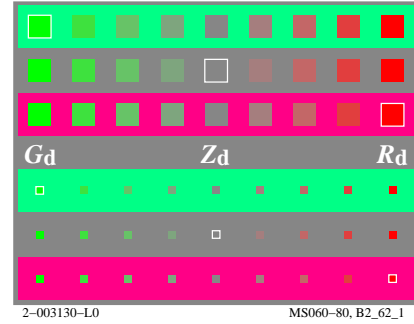
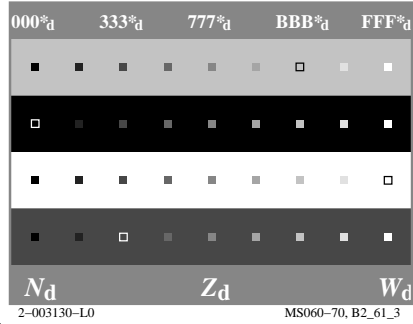
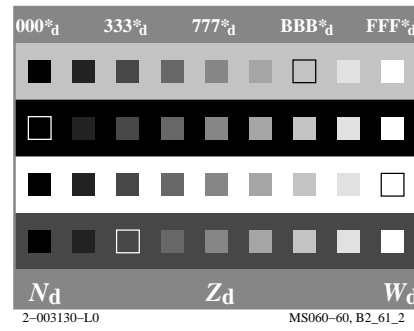
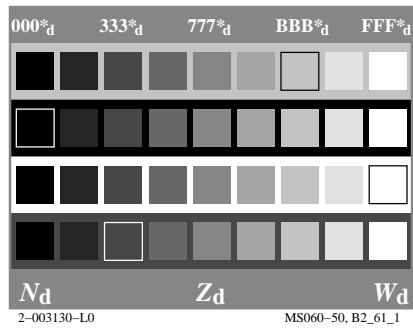
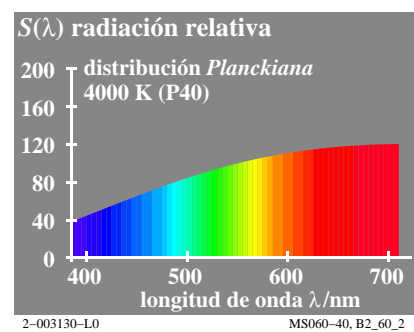
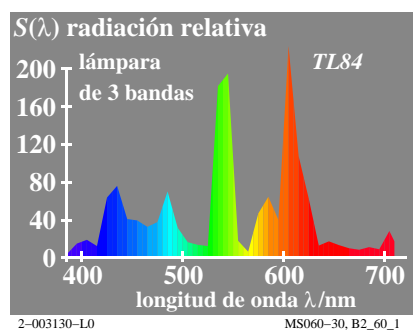
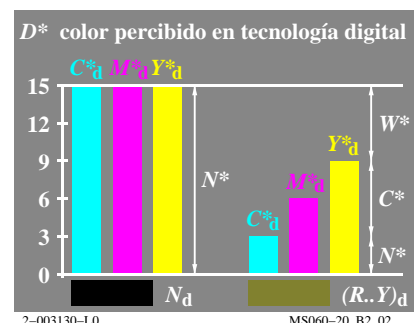
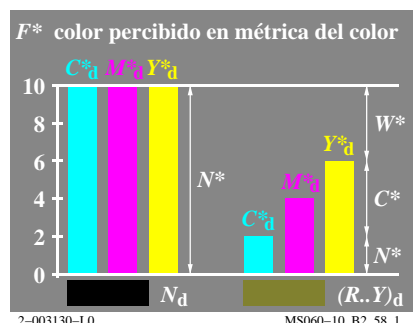
Gráfico TUB-MS06; la gráfica de Ordenador y colorimetry Imagine la serie MS06, 3D=0, de=0

entrada: rgb/cmyk -> rgb/cmyk salida: ningún cambio



vea archivos semejantes: http://130.149.60.45/~farbmetrik/MS06/MS06.HTM información técnica: http://www.ps.bam.de o http://130.149.60.45/~farbmetrik

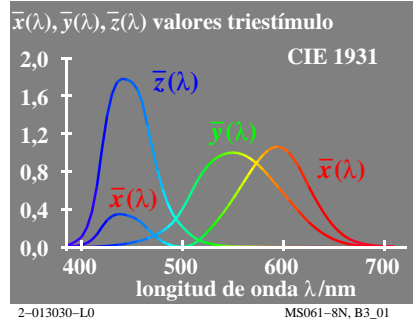
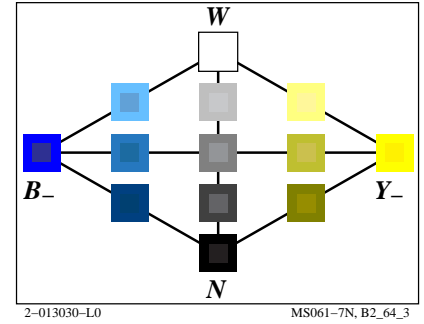
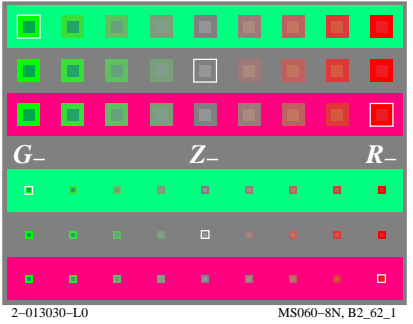
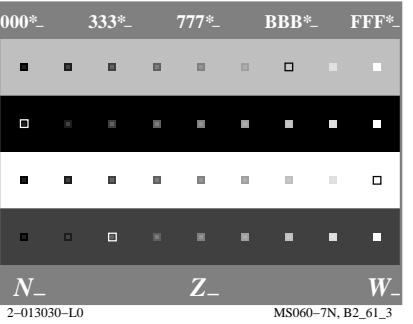
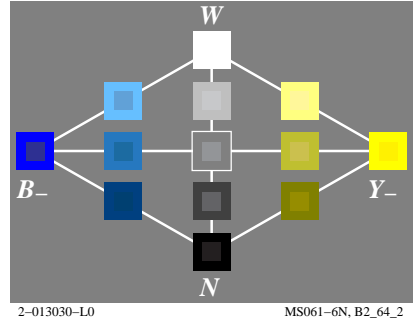
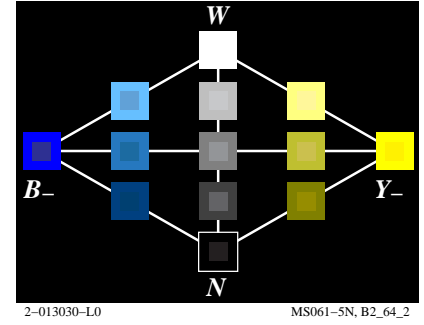
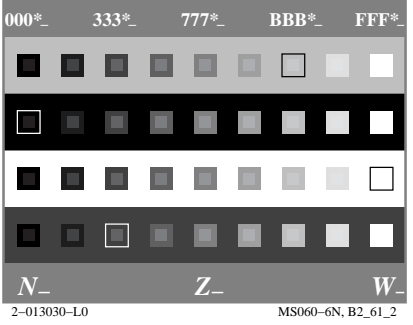
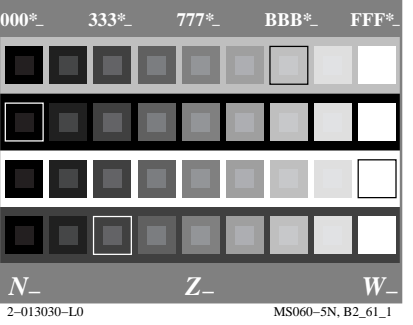
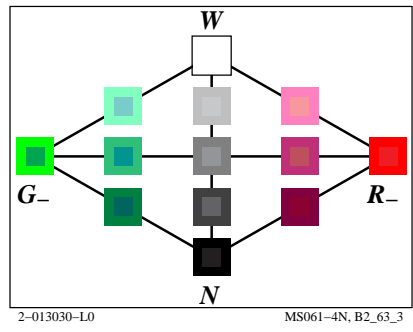
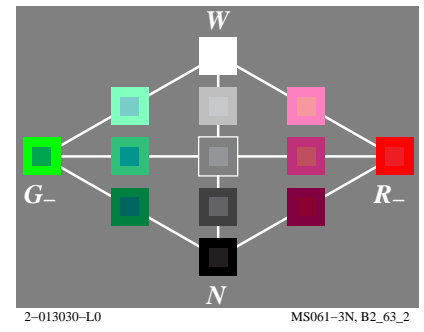
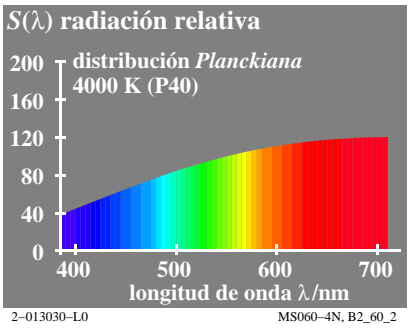
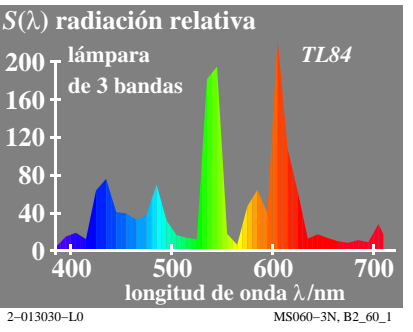
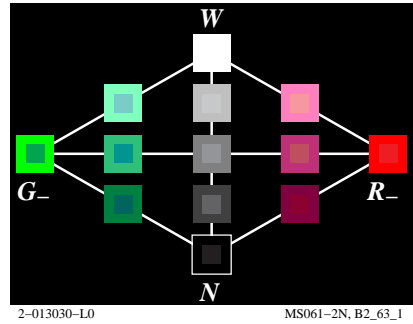
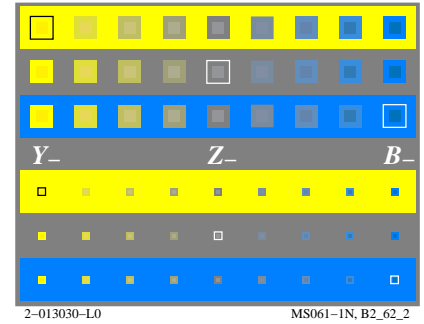
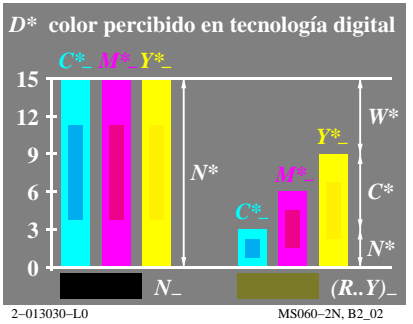
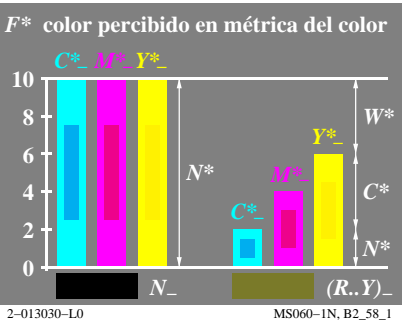
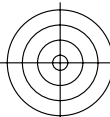
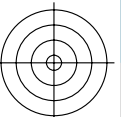
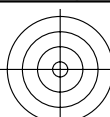
TUB matrícula: 20130201-MS06/MS06LONP.PDF /.PS aplicación para la medida de display output, ninguna separación TUB material: code=rh4ta



vea archivos semejantes: http://130.149.60.45/~farbmetrik/MS06/MS06.HTM información técnica: http://www.ps.bam.de o http://130.149.60.45/~farbmetrik

TUB matrícula: 20130201-MS06/MS06LONP.PDF /.PS aplicación para la medida de display output

TUB material: code=rh4ta



vea archivos semejantes: http://130.149.60.45/~farbmetrik/MS06/MS06.HTM información técnica: http://www.ps.bam.de o http://130.149.60.45/~farbmetrik

TUB matrícula: 20130201-MS06/MS06LONP.PDF /.PS aplicación para la medida de display output, ninguna separación TUB material: code=rh4ta

