

http://farbe.li.tu-berlin.de/MS52/MS52L0FA.TXT /.PS; comience salida  
F: 3D-linealización MS52/MS52LF30FA.DAT en archivo (F), página 1/2

vea archivos semejantes: http://farbe.li.tu-berlin.de/MS52/MS52.HTM  
http://130.149.60.45/~farmetrik o http://farbe.li.tu-berlin.de

TUB matrícula: 20190801-MS52/MS52L0FA.TXT /.PS  
aplicación para la medida de display output

TUB material: code=rh4ta

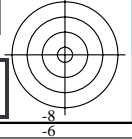
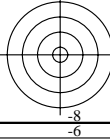
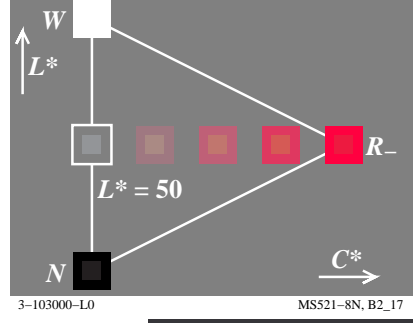
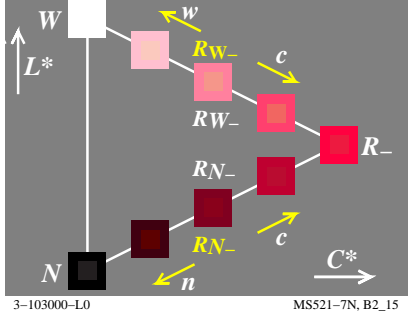
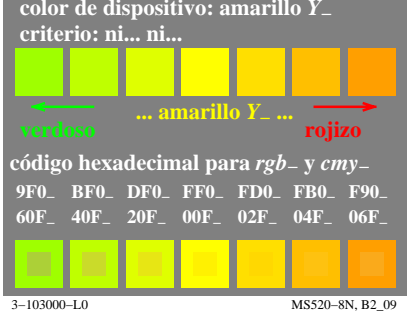
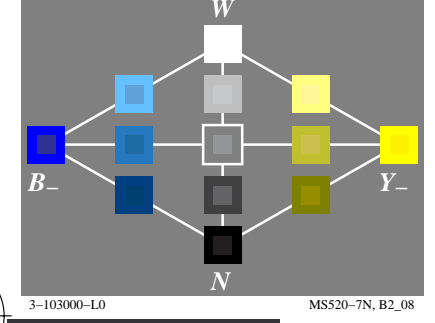
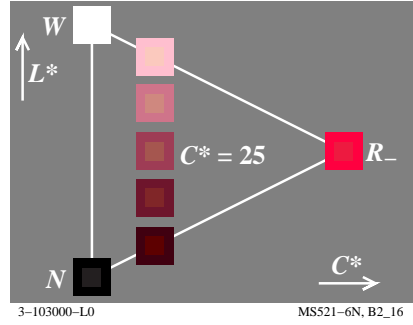
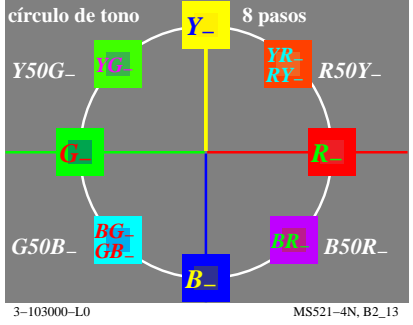
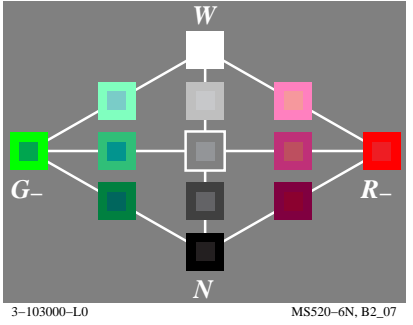
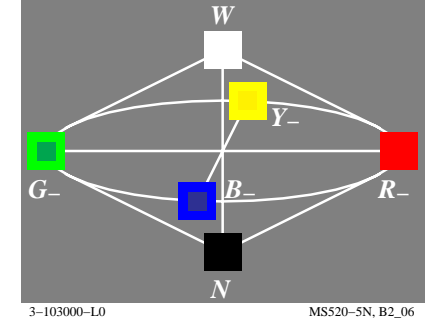
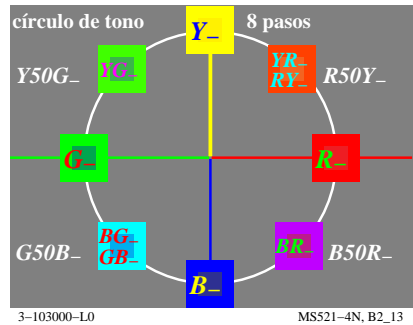
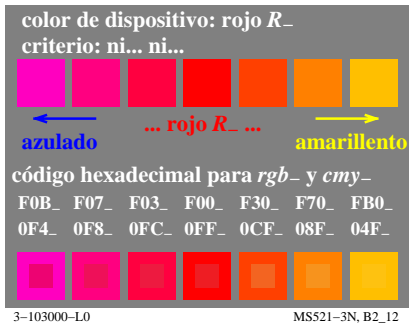
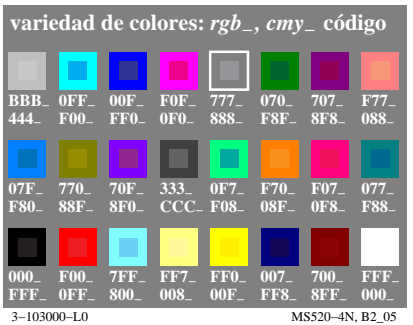
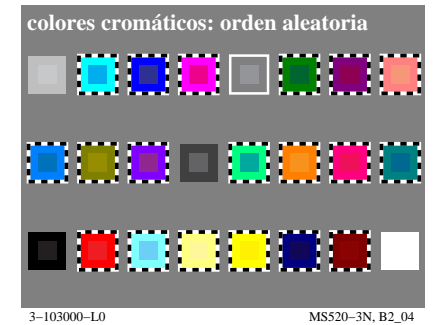
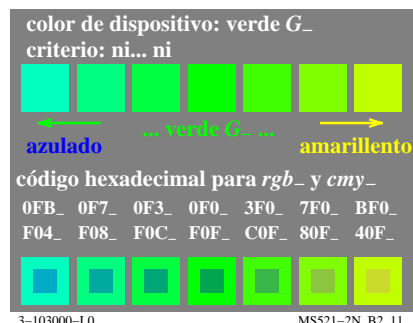
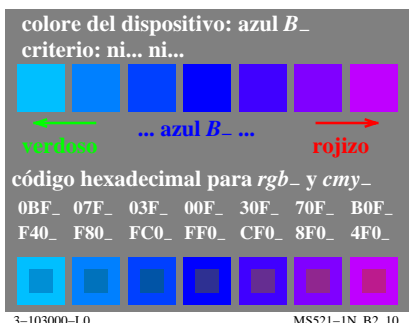
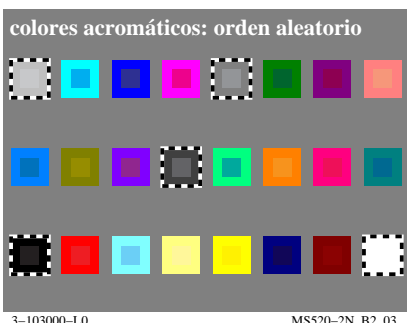
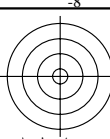


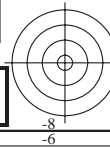
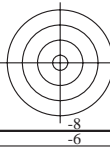
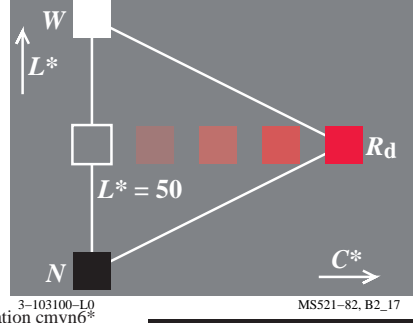
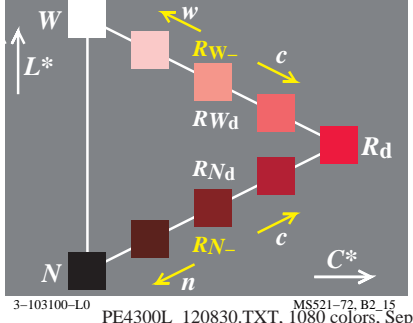
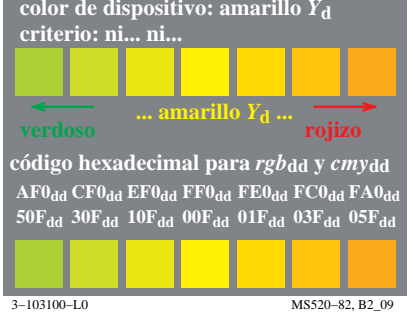
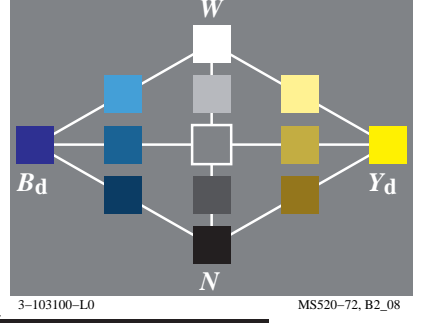
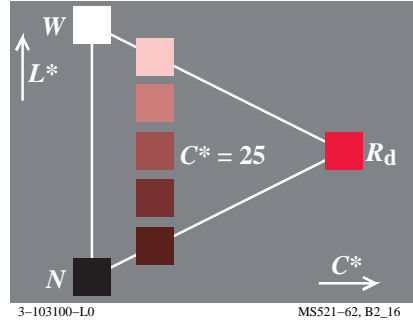
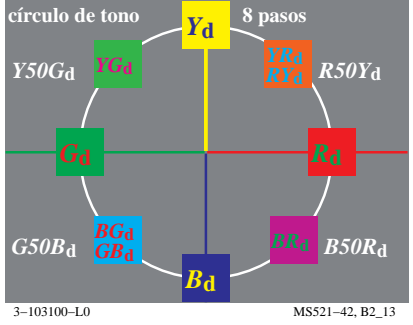
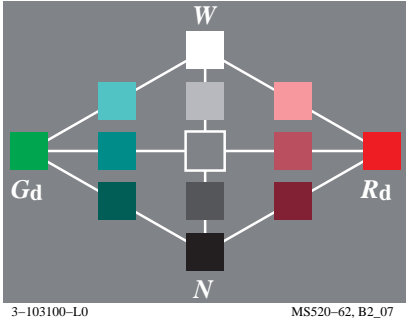
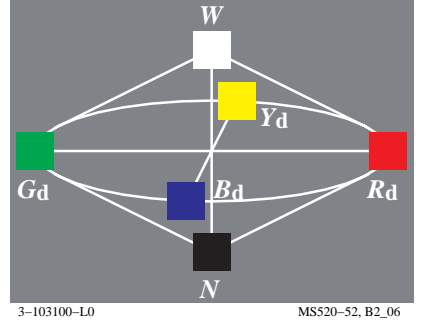
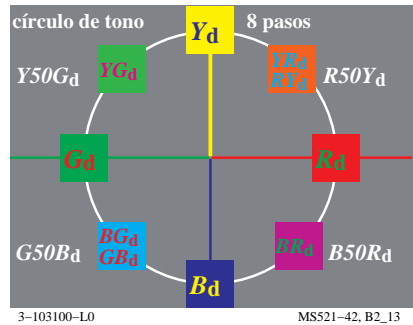
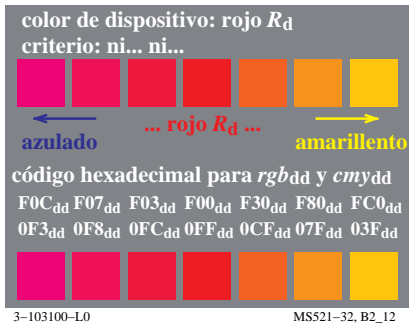
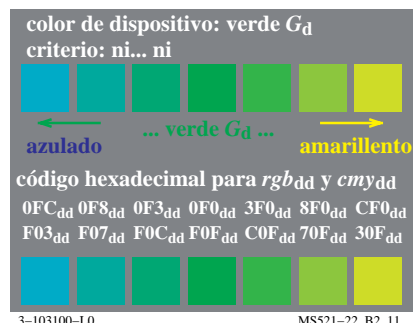
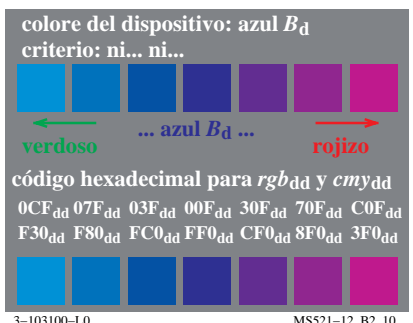
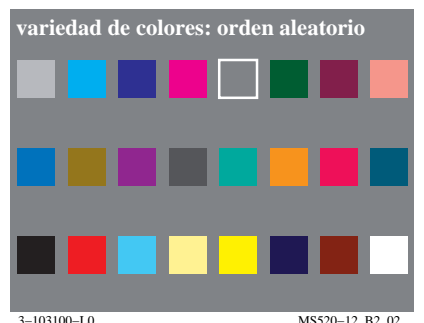
Gráfico TUB-MS52: la gráfica de Ordenador y colorimetry  
Imagine la serie MS52, 3D=1, de=0

entrada: rgb/cmyk -> rgb/cmyk  
salida: ningún cambio

vea archivos semejantes: http://farbe.li.tu-berlin.de/MS52/MS52.HTM  
http://130.149.60.45/~farbmtrik o http://farbe.li.tu-berlin.de

TUB matrícula: 20190801-MS52/MS52L0FA.TXT /.PS  
aplicación para la medida de display output, ninguna separación

TUB material: code=rh4ta



http://farbe.li.tu-berlin.de/MS52/MS52LOFA.TXT /.PS; comience salida  
F: 3D-linealización MS52/MS52LF30FA.DAT en archivo (F), página 1/2

vea archivos semejantes: http://farbe.li.tu-berlin.de/MS52/MS52.HTM  
http://130.149.60.45/~farmetrik o http://farbe.li.tu-berlin.de

TUB matrícula: 20190801-MS52/MS52LOFA.TXT /.PS  
aplicación para la medida de display output

TUB material: code=rh4ta

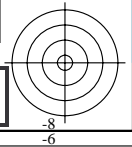
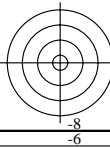
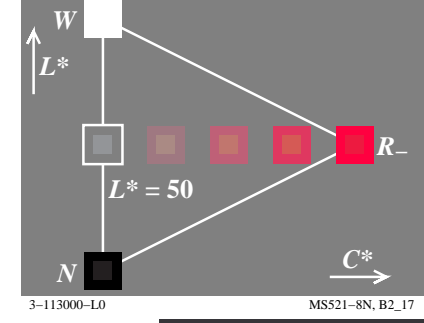
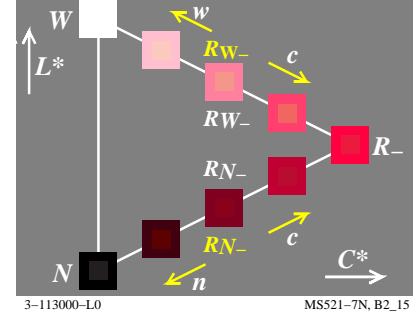
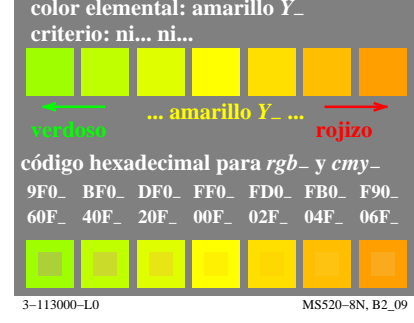
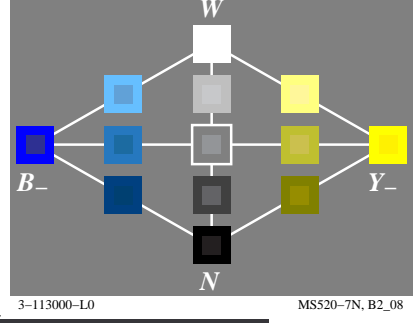
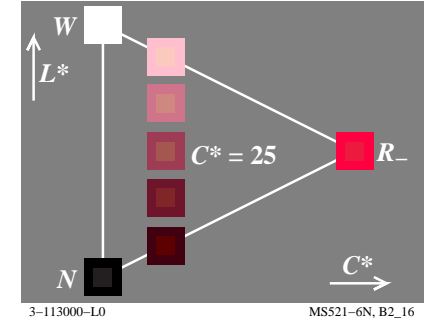
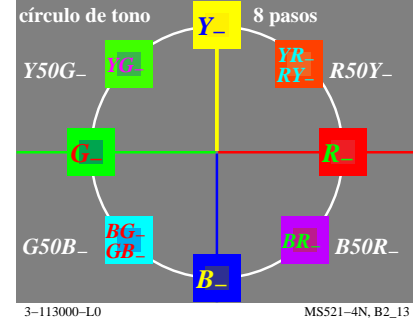
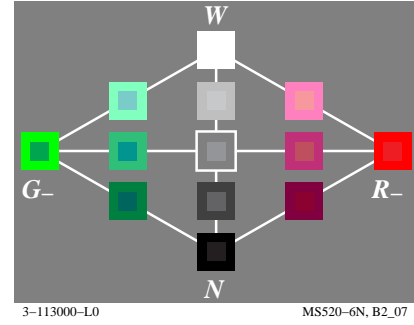
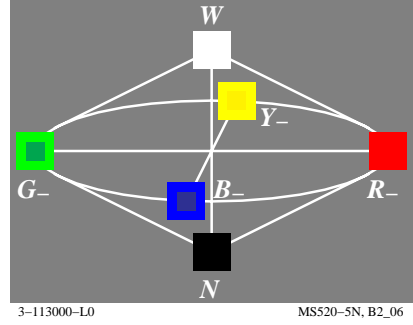
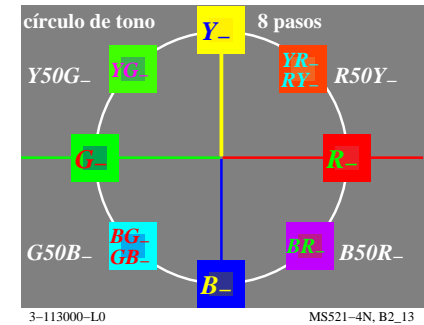
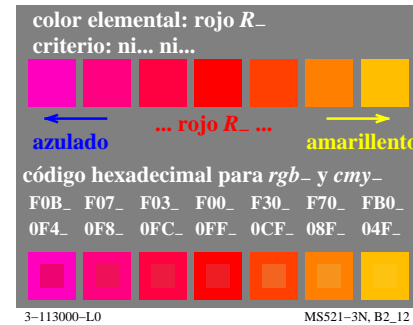
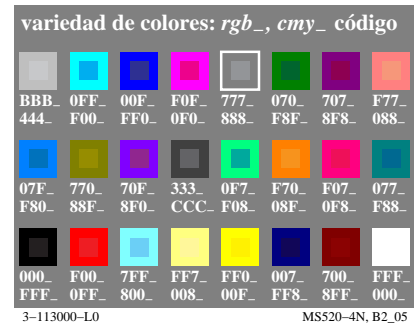
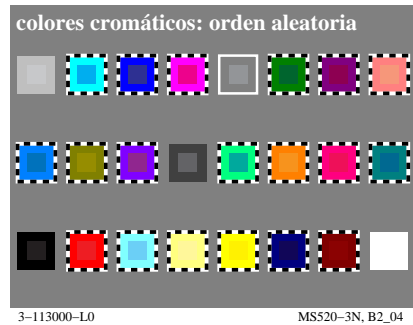
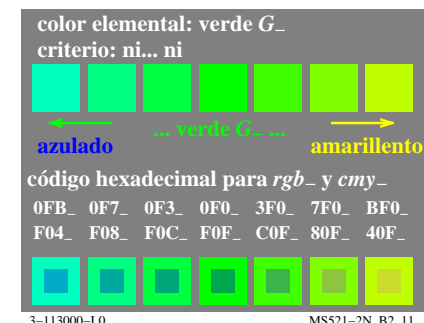
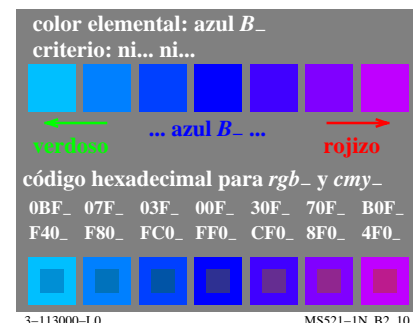
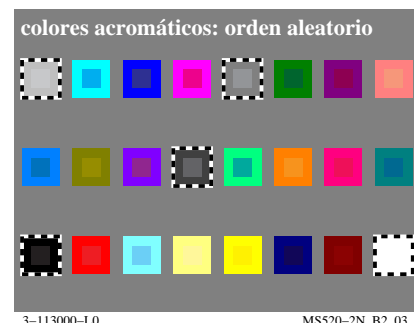
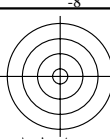


Gráfico TUB-MS52: la gráfica de Ordenador y colorimetry  
Imagine la serie MS52, 3D=1, de=1

entrada: rgb/cmyk -> rgb/cmyk  
salida: ningún cambio

vea archivos semejantes: <http://farbe.li.tu-berlin.de/MS52/MS52.HTM>  
<http://130.149.60.45/~farbmatrik> o <http://farbe.li.tu-berlin.de>

TUB matrícula: 20190801-MS52/MS52L0FA.TXT /.PS  
aplicación para la medida de display output, ninguna separación

TUB material: code=rh4ta

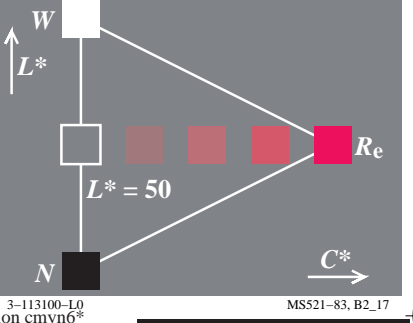
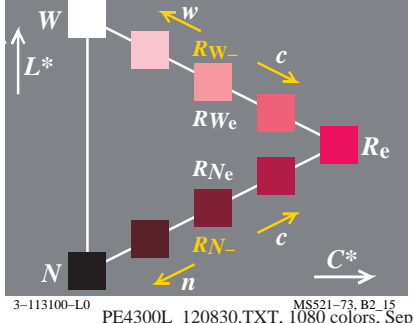
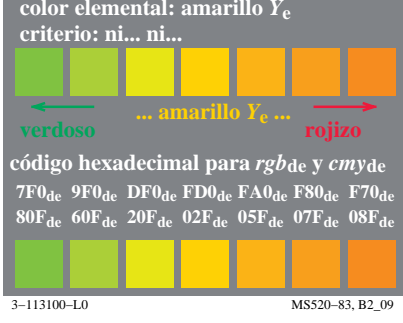
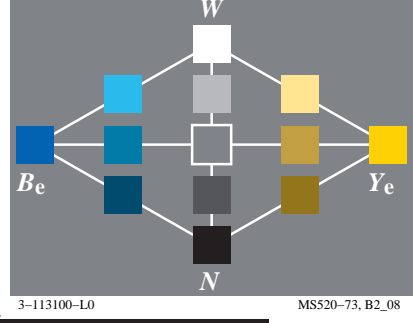
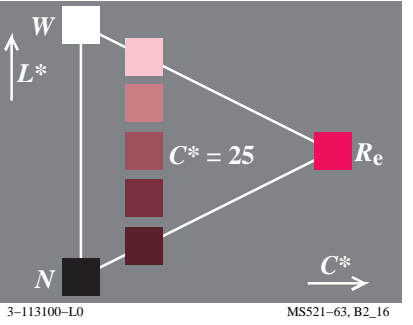
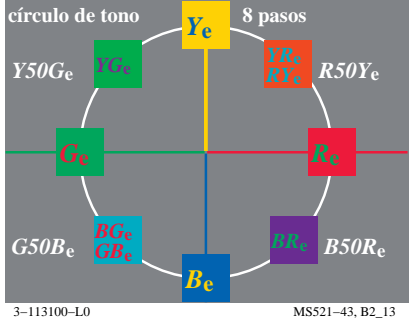
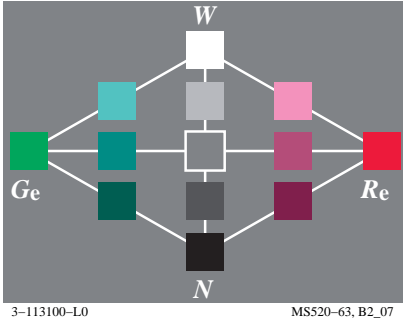
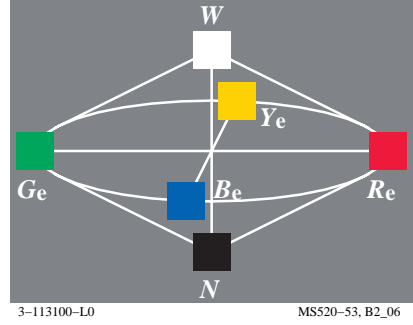
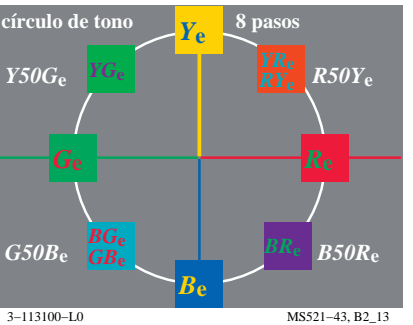
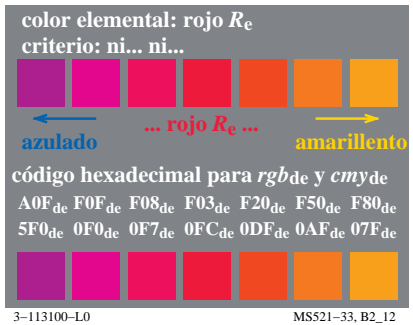
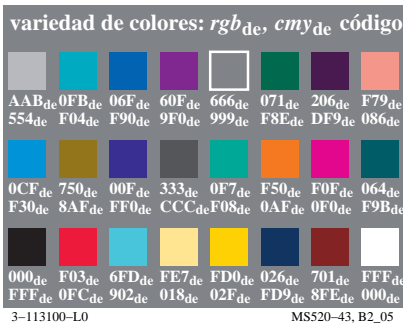
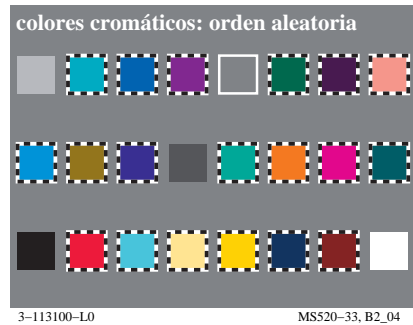
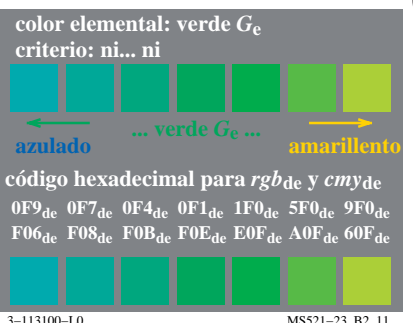
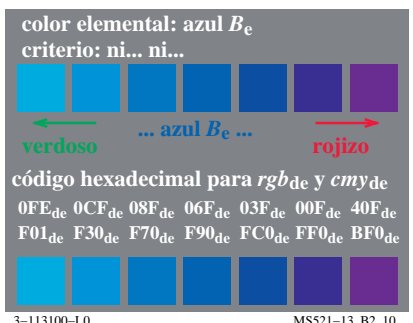


Gráfico TUB-MS52: la gráfica de Ordenador y colorimetry  
Imagine la serie MS52, 3D=1, de=1,  $L-cmy_n6^*$

PE4300L\_120830.TXT, 1080 colors, Separation  $cmy_n6^*$   
entrada:  $rgb/cmyk \rightarrow rgb_{de}$   
salida: 3D-linealización a  $rgb_{de}^*$

