

http://farbe.li.tu-berlin.de/MS52/MS52L0N0.TXT /.PS; comience salida  
N: ninguna 3D-linealización (OL) en archivo (F) o PS-startup (S), página 1/1

vea archivos semejantes: http://farbe.li.tu-berlin.de/MS52/MS52.HTM  
http://130.149.60.45/~farbmetrik o http://farbe.li.tu-berlin.de

TUB matrícula: 20190801-MS52/MS52L0N0.TXT /.PS  
aplicación para la medida de display output

TUB material: code=rh4ta

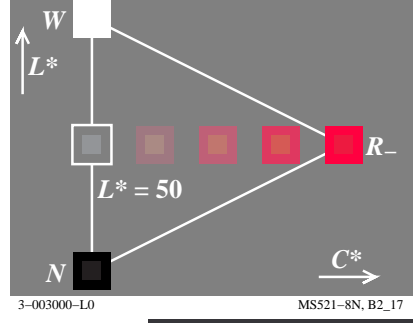
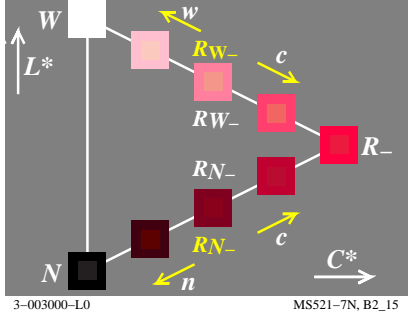
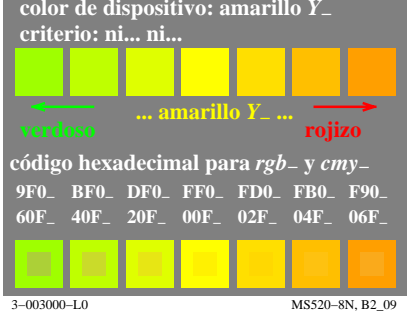
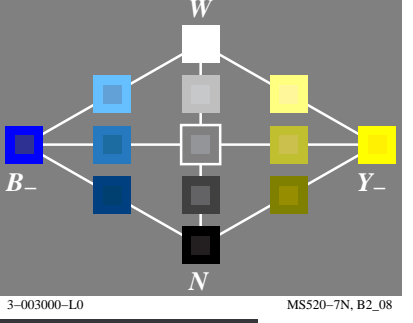
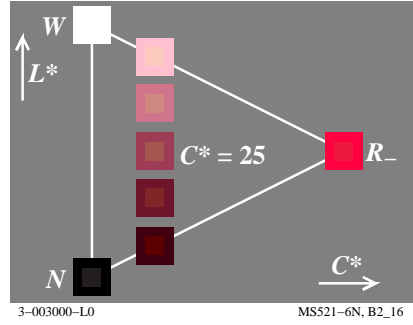
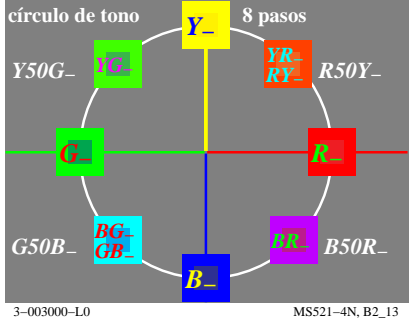
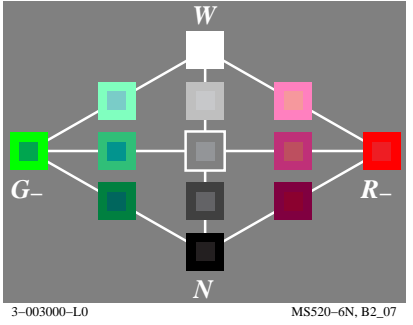
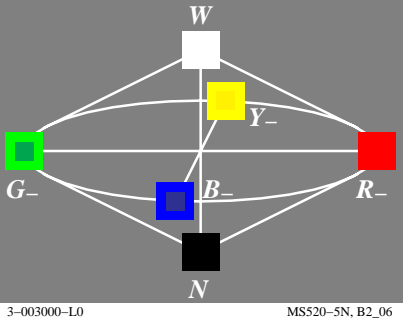
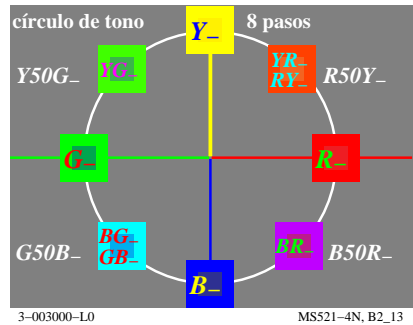
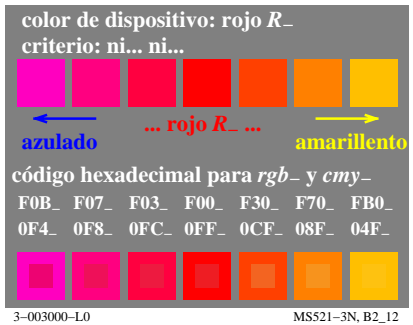
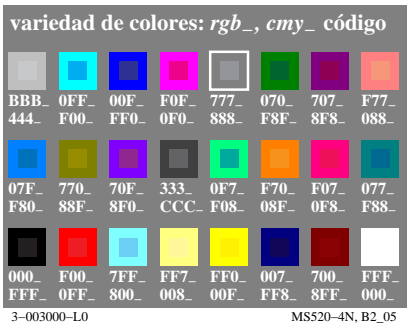
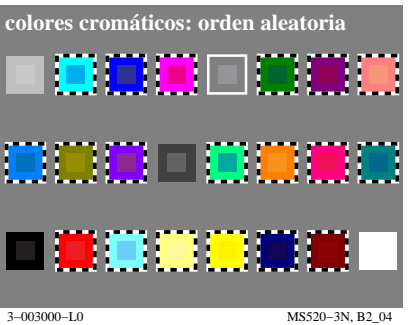
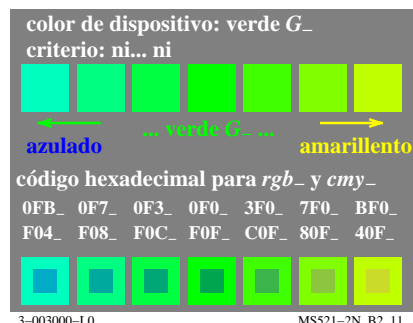
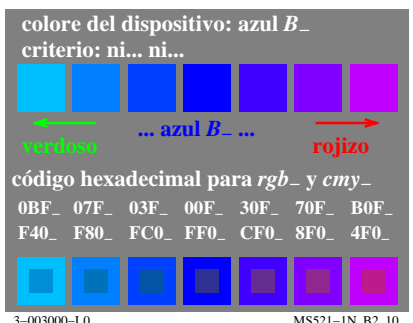
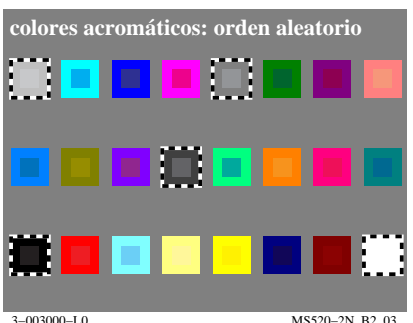
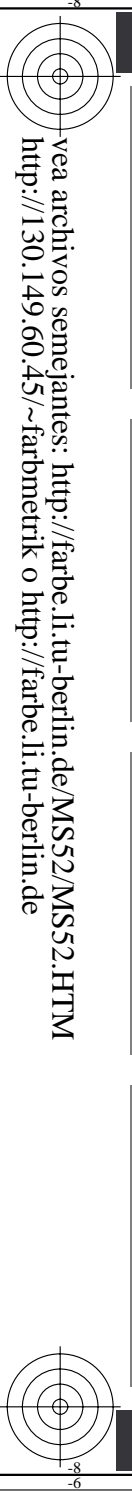


Gráfico TUB-MS52: la gráfica de Ordenador y colorimetry  
Imagine la serie MS52, 3D=0, de=0

entrada: rgb/cmyk -> rgb/cmyk  
salida: ningún cambio

