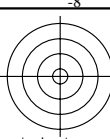


http://farbe.li.tu-berlin.de/MS52/MS52L0NP.PDF /.PS; comience salida
N: ninguna 3D-linealización (OL) en archivo (F) o PS-startup (S), página 1/2

vea archivos semejantes: http://farbe.li.tu-berlin.de/MS52/MS52.HTM
http://130.149.60.45/~farbmetric o http://farbe.li.tu-berlin.de

TUB matrícula: 20190801-MS52/MS52L0NP.PDF /.PS
aplicación para la medida de display output

TUB material: code=rh4ta



variedad de colores: orden aleatorio

3-003000-L0 MS520-1N, B2_02

colores acromáticos: orden aleatorio

3-003000-L0 MS520-2N, B2_03

colore del dispositivo: azul B_ criterio: ni... ni...

3-003000-L0 MS521-1N, B2_10

color de dispositivo: verde G_ criterio: ni... ni

3-003000-L0 MS521-2N, B2_11

colores cromáticos: orden aleatoria

3-003000-L0 MS520-3N, B2_04

variedad de colores: rgb_, cmy_ código

3-003000-L0 MS520-4N, B2_05

color de dispositivo: rojo R_ criterio: ni... ni...

3-003000-L0 MS521-3N, B2_12

círculo de tono Y_ 8 pasos

3-003000-L0 MS521-4N, B2_13

Color chart with primary and secondary colors (W, Y, B, R, G, N).

3-003000-L0 MS520-5N, B2_06

Color chart with primary and secondary colors (W, Y, B, R, G, N).

3-003000-L0 MS520-6N, B2_07

círculo de tono Y_ 8 pasos

3-003000-L0 MS521-4N, B2_13

Color chart showing a vertical gradient of colors (W, L*, C*, N, R).

3-003000-L0 MS521-6N, B2_16

Color chart with primary and secondary colors (W, Y, B, R, G, N).

3-003000-L0 MS520-7N, B2_08

color de dispositivo: amarillo Y_ criterio: ni... ni...

3-003000-L0 MS520-8N, B2_09

Color chart showing a vertical gradient of colors (W, L*, C*, N, R).

3-003000-L0 MS521-7N, B2_15

Color chart showing a vertical gradient of colors (W, L*, C*, N, R).

3-003000-L0 MS521-8N, B2_17

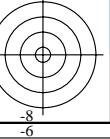
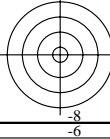


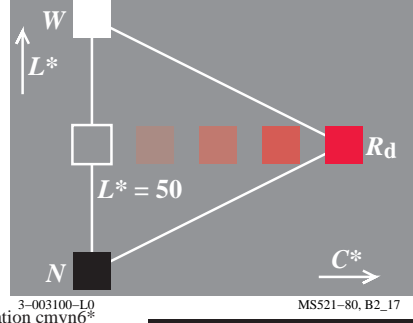
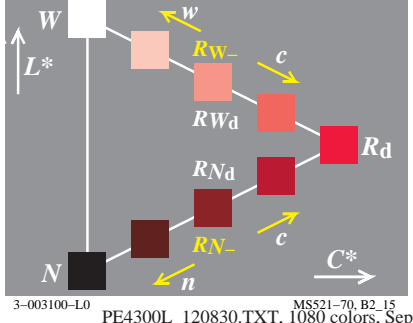
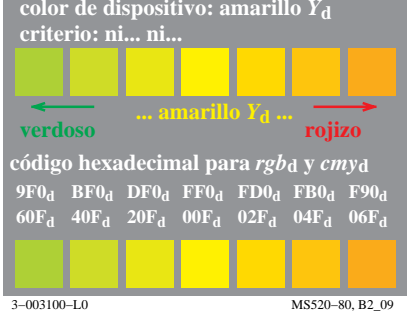
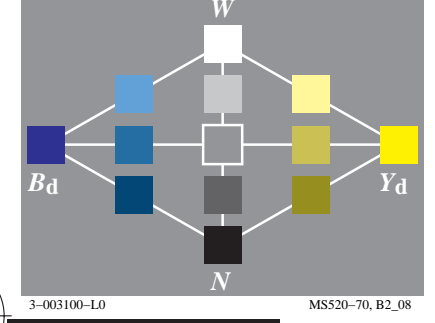
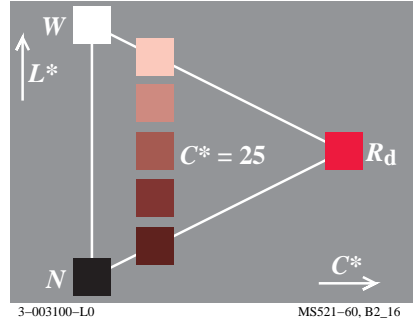
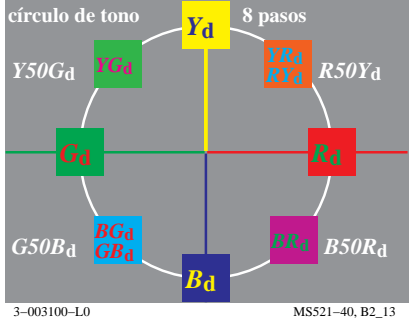
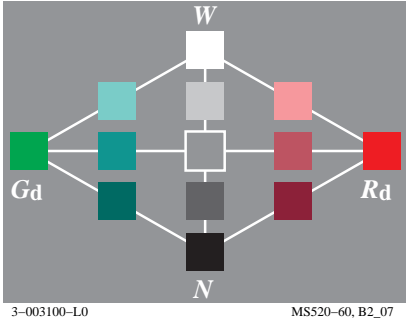
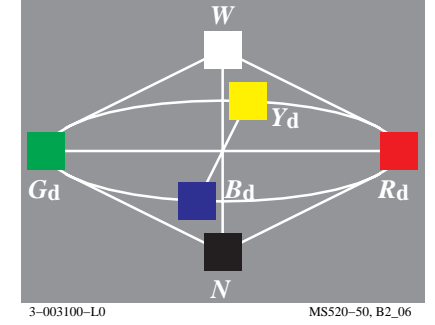
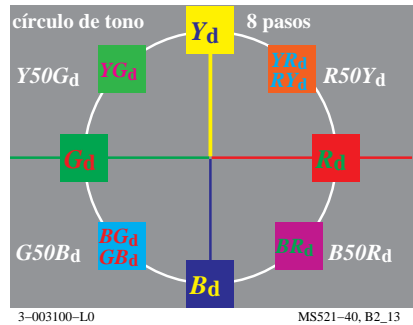
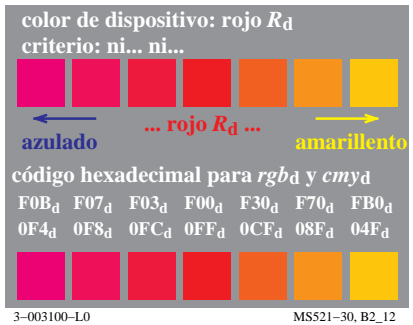
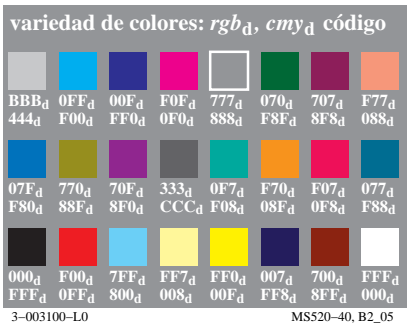
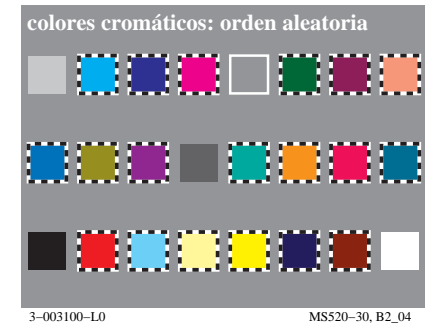
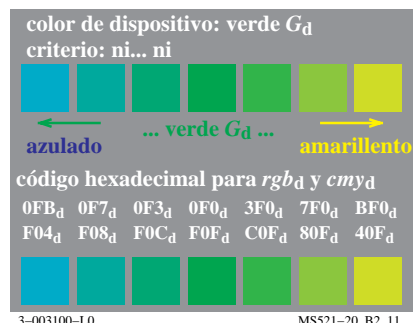
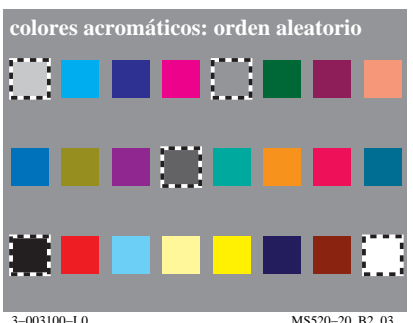
Gráfico TUB-MS52: la gráfica de Ordenador y colorimetry
Imagine la serie MS52, 3D=0, de=0

entrada: rgb/cmyk -> rgb/cmyk
salida: ningún cambio

vea archivos semejantes: http://farbe.li.tu-berlin.de/MS52/MS52.HTM
http://130.149.60.45/~farmetrik o http://farbe.li.tu-berlin.de

TUB matrícula: 20190801-MS52/MS52L0NP.PDF /.PS
aplicación para la medida de display output, ninguna separación

TUB material: code=rh4ta



http://farbe.li.tu-berlin.de/MS52/MS52L0NP.PDF /.PS; comience salida
N: ninguna 3D-linealización (OL) en archivo (F) o PS-startup (S), página 1/2

vea archivos semejantes: http://farbe.li.tu-berlin.de/MS52/MS52.HTM
http://130.149.60.45/~farbmatrik o http://farbe.li.tu-berlin.de

TUB matrícula: 20190801-MS52/MS52L0NP.PDF /.PS
aplicación para la medida de display output

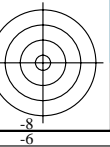
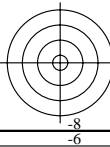
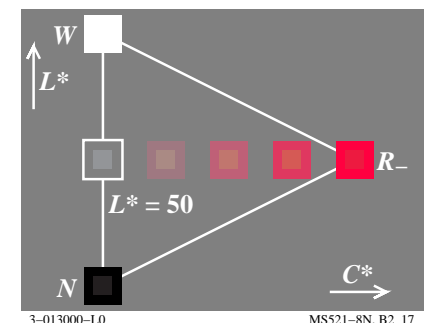
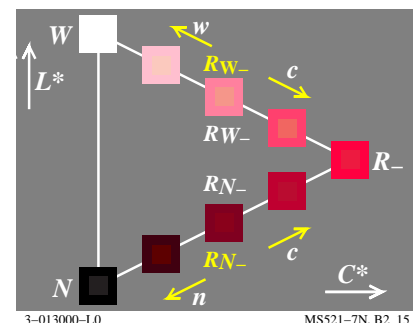
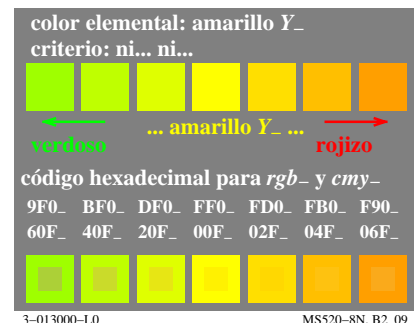
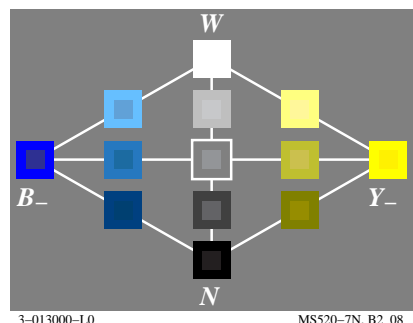
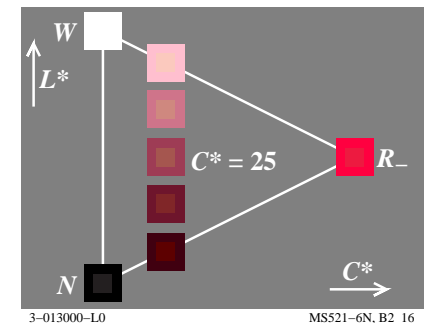
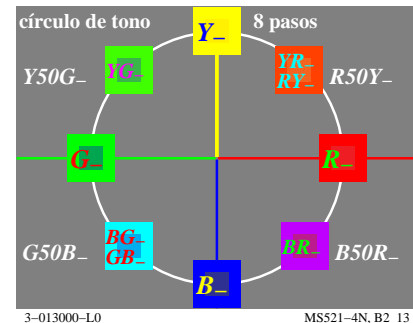
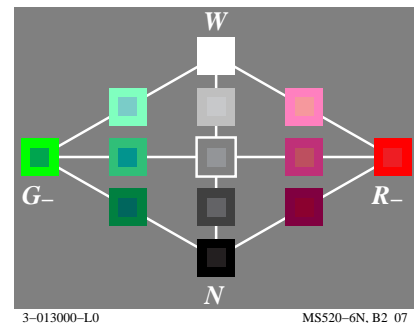
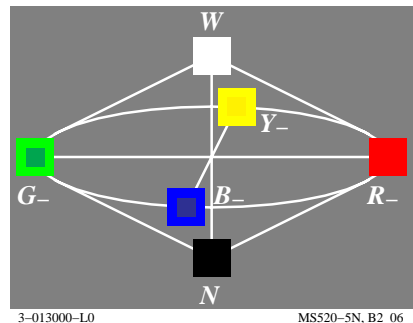
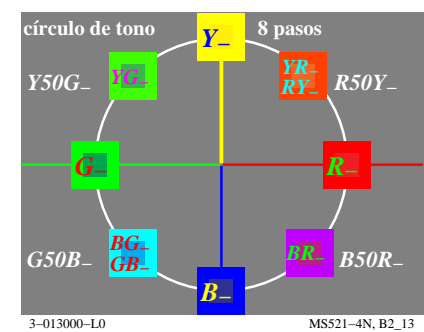
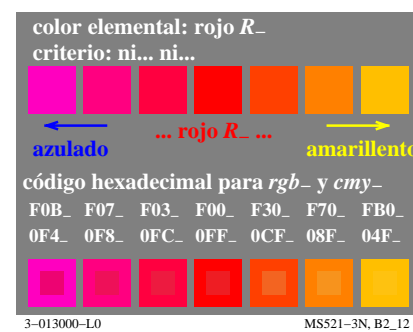
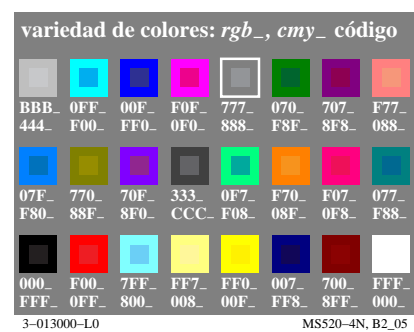
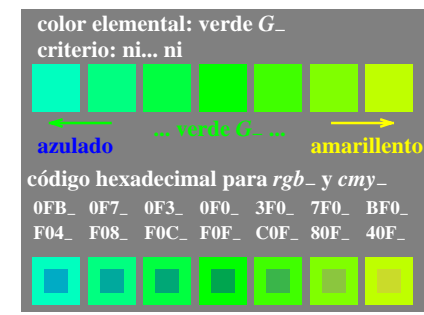
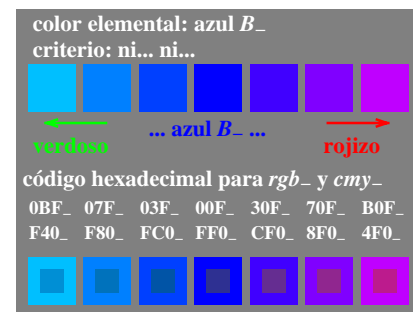
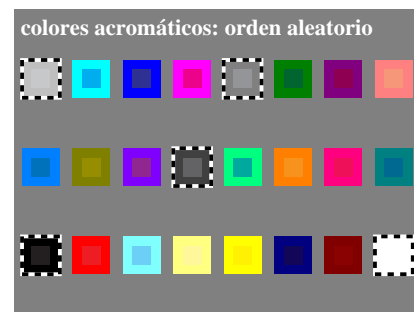
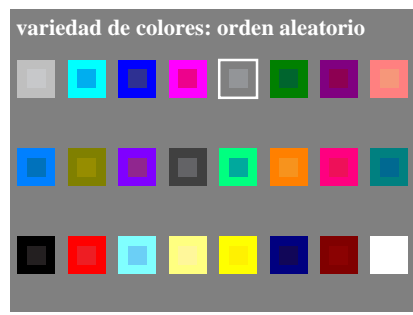
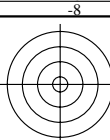


Gráfico TUB-MS52: la gráfica de Ordenador y colorimetry
Imagine la serie MS52, 3D=0, de=1

entrada: rgb/cmyk -> rgb/cmyk
salida: ningún cambio

TUB material: code=rh4ta

vea archivos semejantes: http://farbe.li.tu-berlin.de/MS52/MS52.HTM
http://130.149.60.45/~farbmatrik o http://farbe.li.tu-berlin.de

TUB matrícula: 20190801-MS52/MS52L0NP.PDF /.PS
aplicación para la medida de display output, ninguna separación

TUB material: code=rh4ta



variedad de colores: orden aleatorio

3-013100-L0 MS520-11, B2_02

colores acromáticos: orden aleatorio

3-013100-L0 MS520-21, B2_03

color elemental: azul B_e
criterio: ni... ni...

← verdoso ... azul B_e ... rojizo →

código hexadecimal para rgb_e y cmy_e
 0BF_e 07F_e 03F_e 00F_e 30F_e 70F_e B0F_e
 F40_e F80_e FC0_e FF0_e CF0_e 8F0_e 4F0_e

3-013100-L0 MS521-11, B2_10

color elemental: verde G_e
criterio: ni... ni

← azulado ... verde G_e ... amarillento →

código hexadecimal para rgb_e y cmy_e
 0FB_e 0F7_e 0F3_e 0F0_e 3F0_e 7F0_e BF0_e
 F04_e F08_e F0C_e F0F_e C0F_e 80F_e 40F_e

3-013100-L0 MS521-21, B2_11

colores cromáticos: orden aleatoria

3-013100-L0 MS520-31, B2_04

variedad de colores: rgb_e , cmy_e código

BBB_e 0FB_e 05F_e 60F_e 777_e 070_e 307_e F79_e
 444_e F04_e FA0_e 9F0_e 888_e F8F_e CF8_e 086_e
 0CF_e 760_e 00F_e 333_e 0F7_e F50_e F0F_e 075_e
 F30_e 89F_e FF0_e CCC_e F08_e 0AF_e 0F0_e F8A_e
 000_e F03_e 7FD_e FE7_e FD0_e 027_e 701_e FFF_e
 FFF_e 0FC_e 802_e 018_e 02F_e FD8_e 8FE_e 000_e

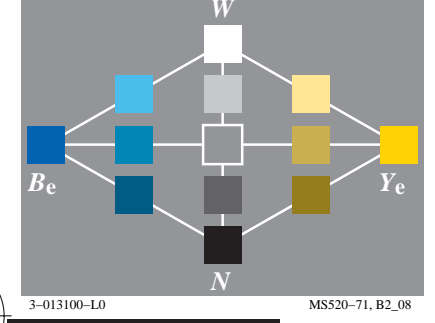
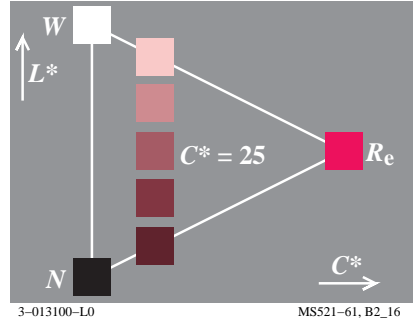
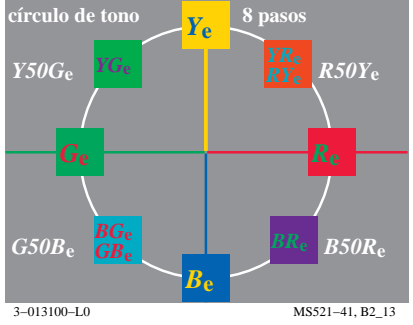
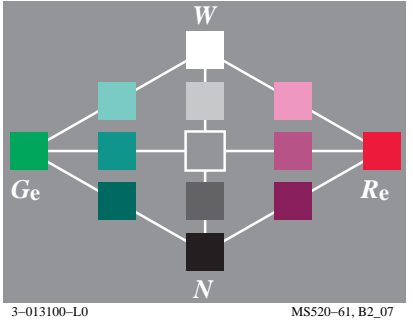
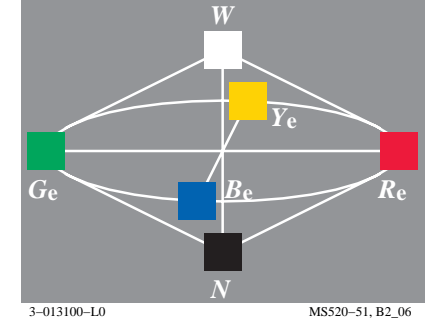
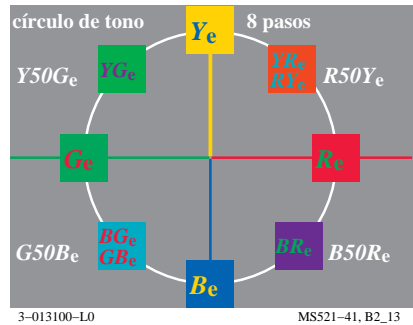
3-013100-L0 MS520-41, B2_05

color elemental: rojo R_e
criterio: ni... ni...

← azulado ... rojo R_e ... amarillento →

código hexadecimal para rgb_e y cmy_e
 F0B_e F07_e F03_e F00_e F30_e F70_e FB0_e
 0F4_e 0F8_e 0FC_e 0FF_e 0CF_e 08F_e 04F_e

3-013100-L0 MS521-31, B2_12



color elemental: amarillo Y_e
criterio: ni... ni...

← verdoso ... amarillo Y_e ... rojizo →

código hexadecimal para rgb_e y cmy_e
 9F0_e BF0_e DF0_e FF0_e FD0_e FB0_e F90_e
 60F_e 40F_e 20F_e 00F_e 02F_e 04F_e 06F_e

3-013100-L0 MS520-81, B2_09

