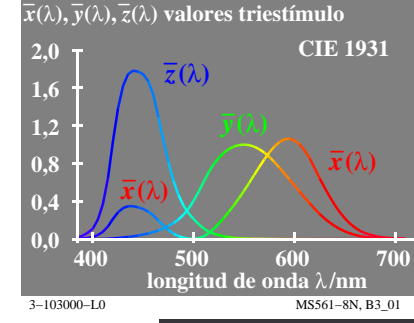
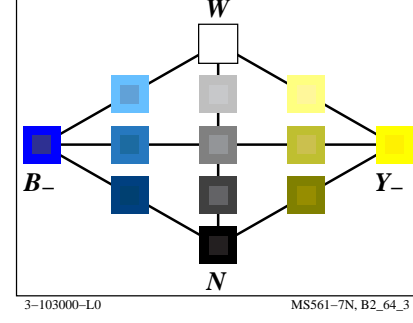
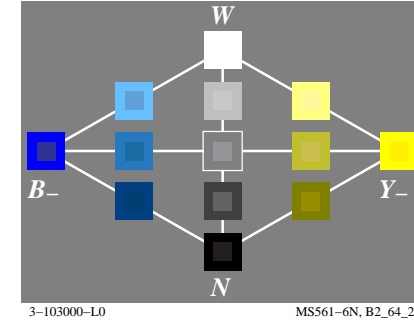
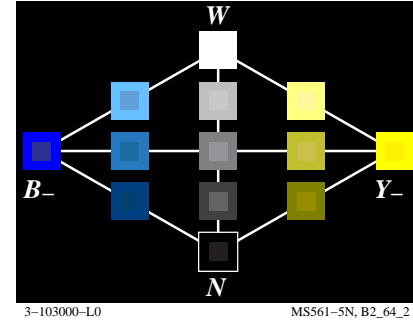
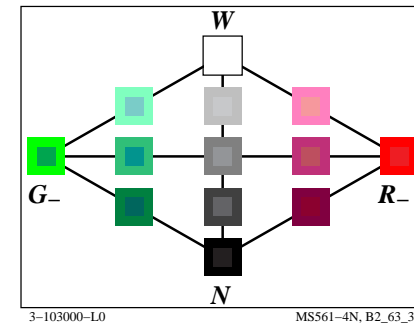
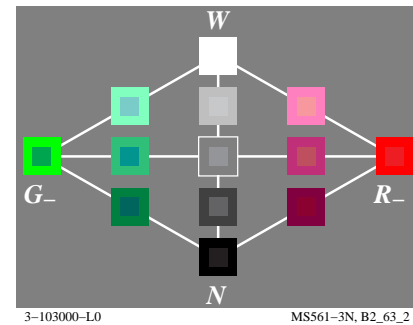
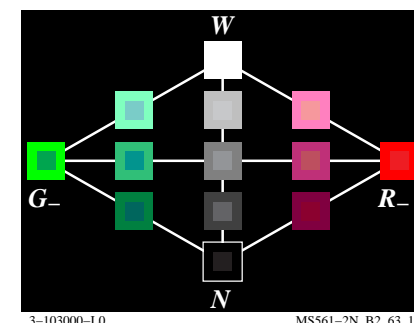
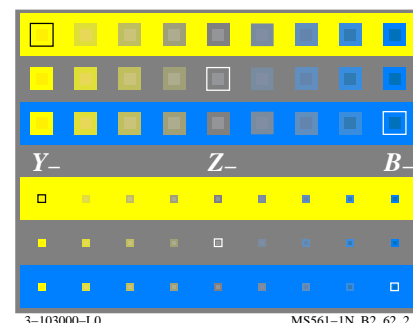
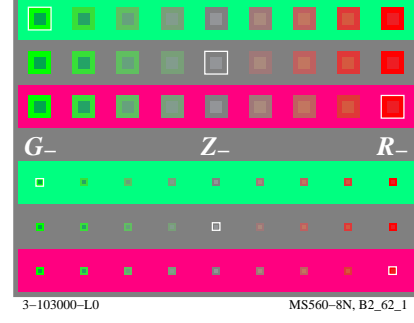
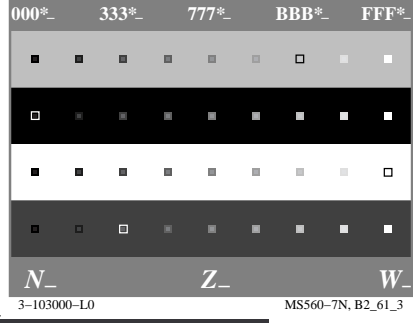
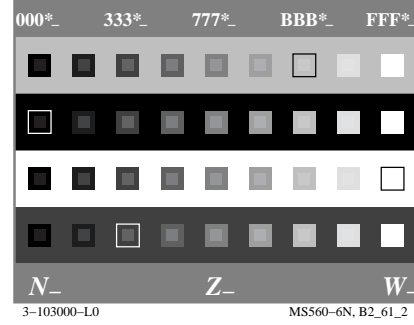
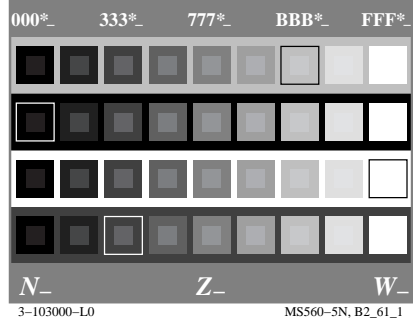
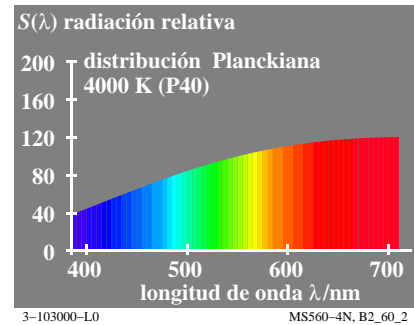
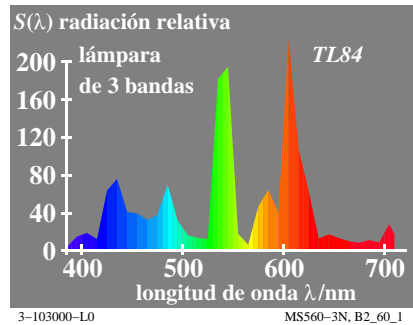
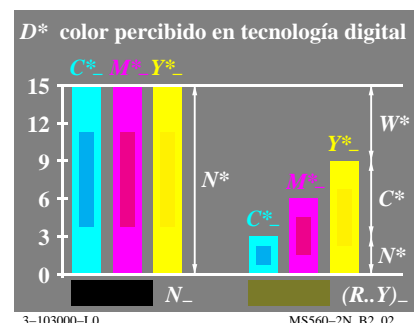
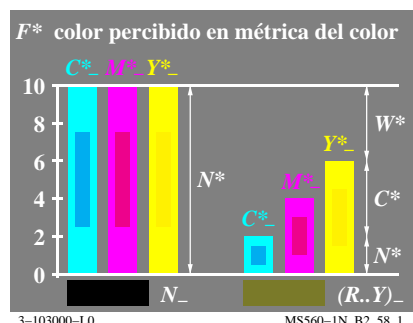


vea archivos semejantes: <http://farbe.li.tu-berlin.de/MS56/MS56.HTM>  
<http://130.149.60.45/~farbmertik> o <http://farbe.li.tu-berlin.de>

TUB matrícula: 20190801-MS56/MS56L0FP.PDF /.PS  
aplicación para la medida de display output

TUB material: code=rh4ta



vea archivos semejantes: <http://farbe.li.tu-berlin.de/MS56/MS56.HTM>  
<http://130.149.60.45/~farbmertik> o <http://farbe.li.tu-berlin.de>

TUB matrícula: 20190801-MS56/MS56L0FP.PDF /PS  
aplicación para la medida de display output, ninguna separación

TUB material: code=rh4ta

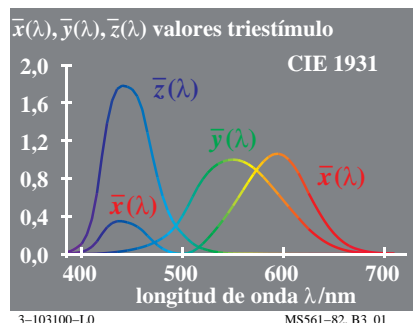
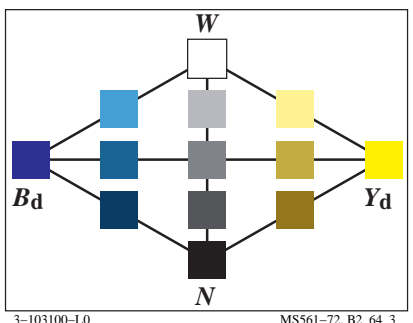
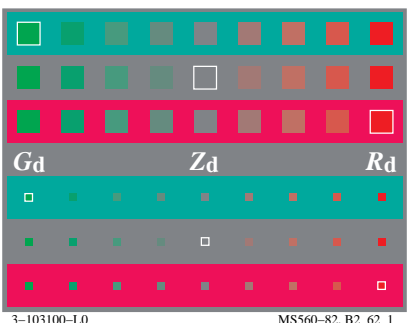
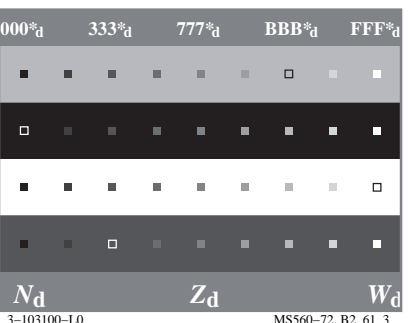
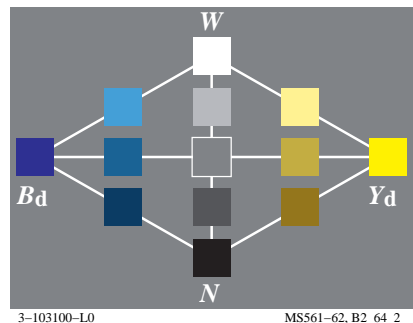
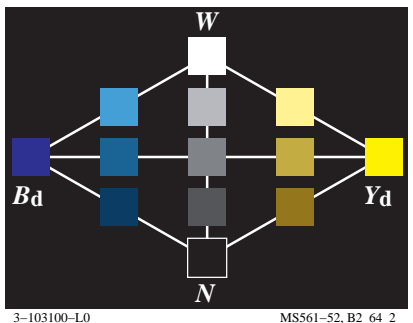
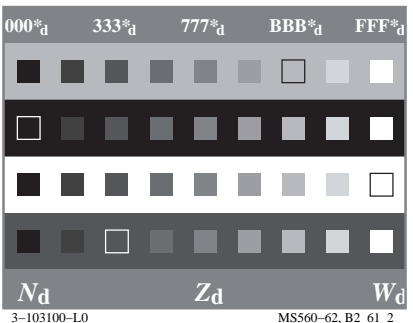
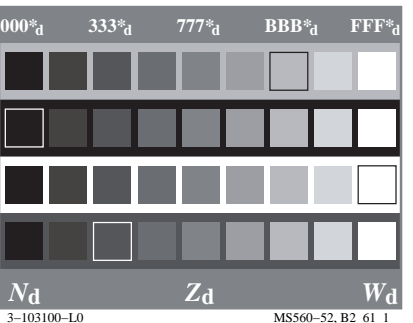
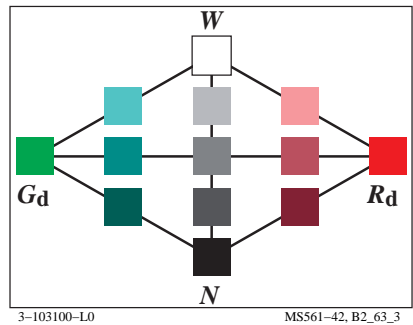
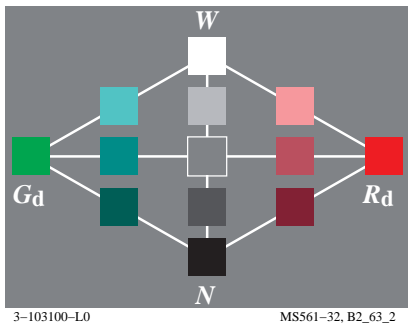
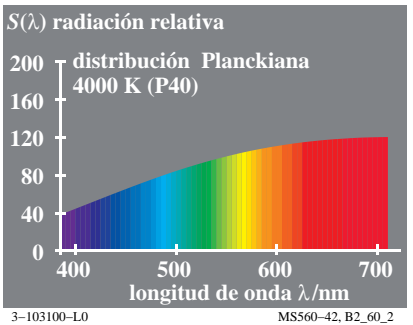
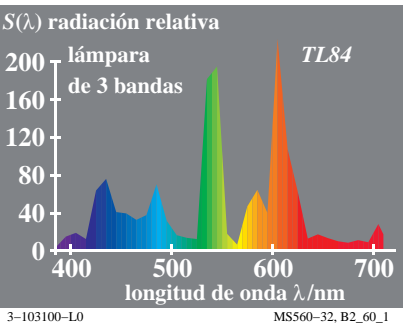
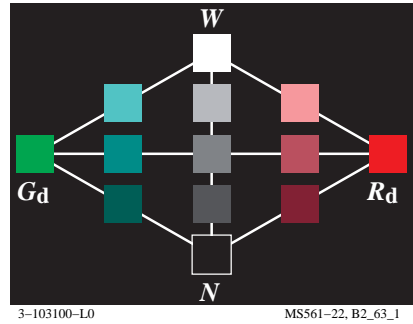
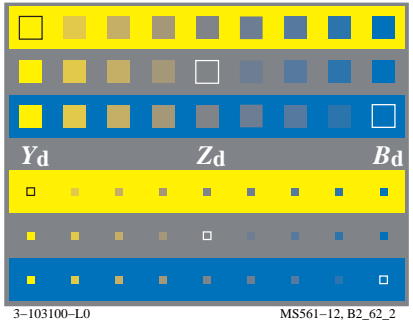
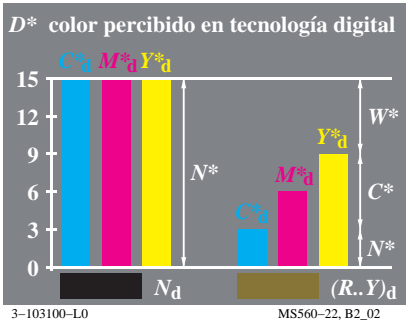
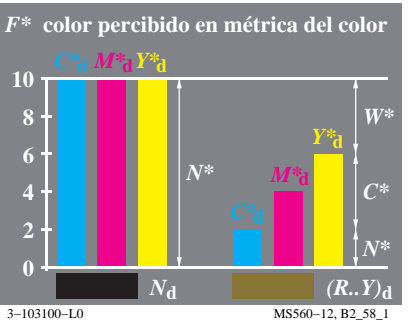


Gráfico TUB-MS56; la gráfica de Ordenador y colorimetry  
Imagine la serie MS56, 3D=1, de=0, L-cmy<sub>6</sub>\*

PE4300L\_120830.TXT, 1080 colors, Separation cmy<sub>6</sub>\*  
entrada: rgb/cmyk -> rgb<sub>dd</sub>  
salida: 3D-linealización a rgb\*<sub>dd</sub>



vea archivos semejantes: <http://farbe.li.tu-berlin.de/MS56/MS56.HTM>  
<http://130.149.60.45/~farbmertik> o <http://farbe.li.tu-berlin.de>

TUB matrícula: 20190801-MS56/MS56L0FP.PDF /.PS  
aplicación para la medida de display output

TUB material: code=rh4ta

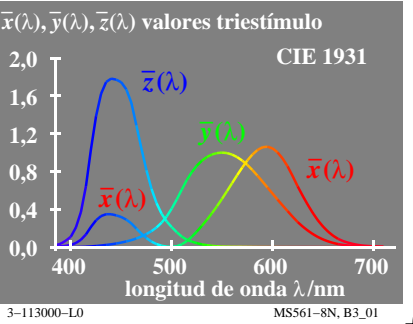
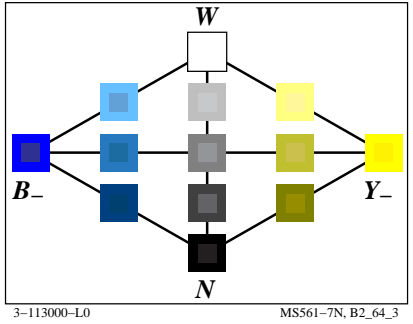
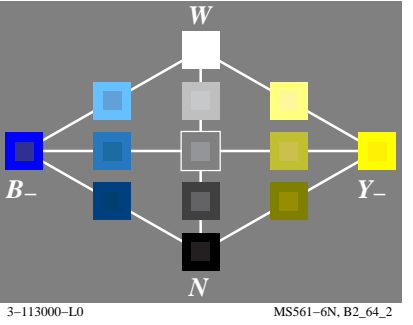
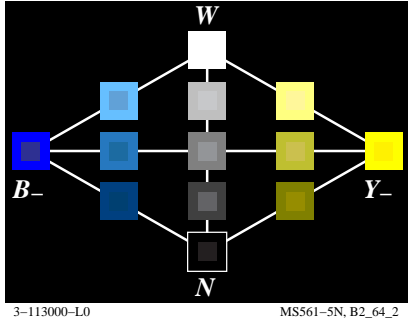
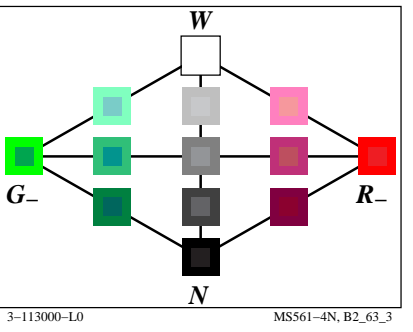
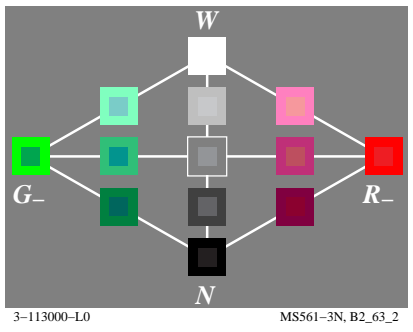
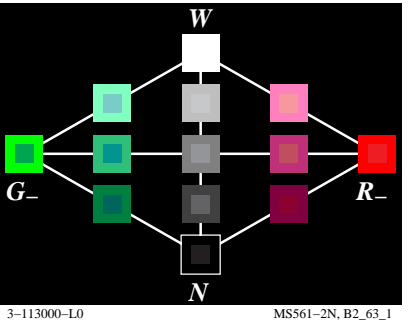
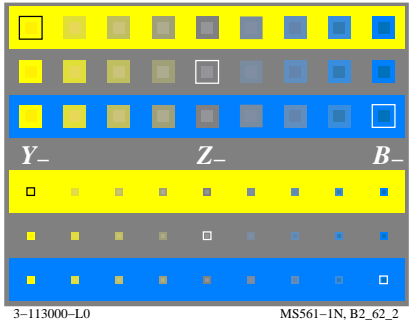
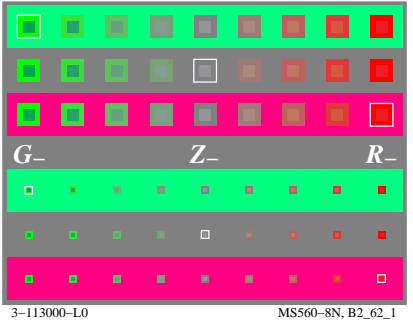
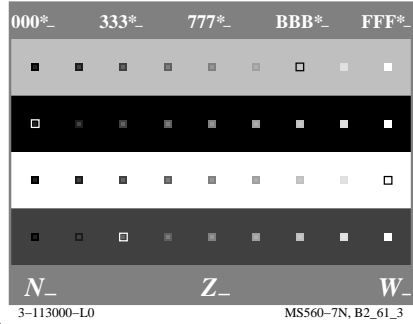
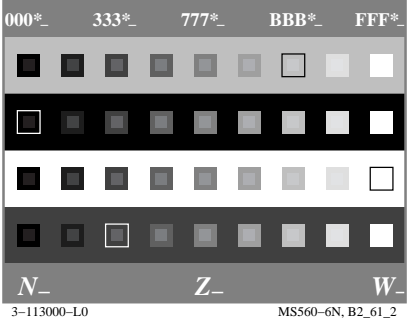
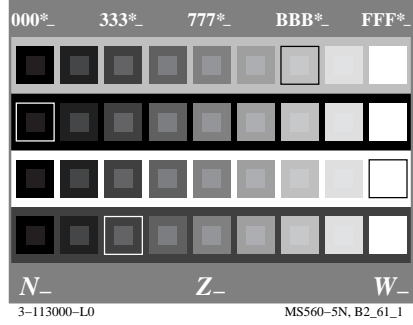
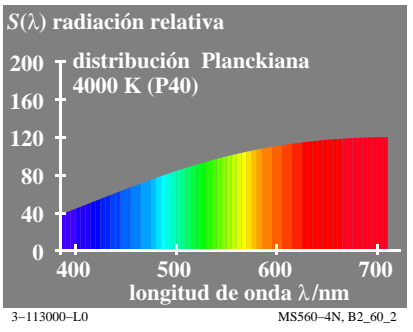
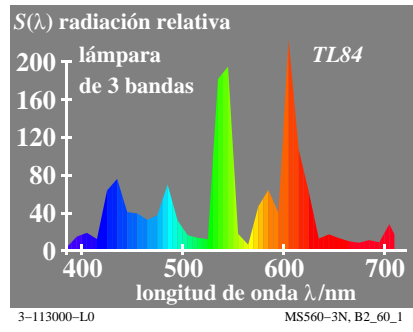
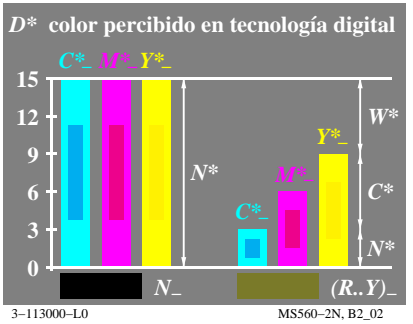
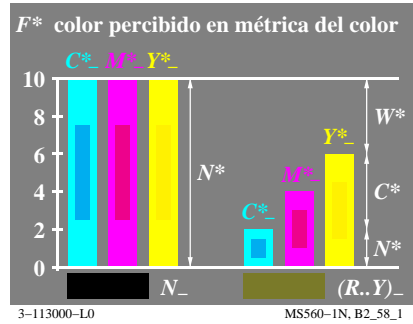


Gráfico TUB-MS56; la gráfica de Ordenador y colorimetry  
Imagine la serie MS56, 3D=1, de=1

entrada: rgb/cmyk → rgb/cmyk  
salida: ningún cambio



vea archivos semejantes: <http://farbe.li.tu-berlin.de/MS56/MS56.HTM>  
<http://130.149.60.45/~farbmertik> o <http://farbe.li.tu-berlin.de>

TUB matrícula: 20190801-MS56/MS56L0FP.PDF /PS  
aplicación para la medida de display output, ninguna separación

TUB material: code=rh4ta

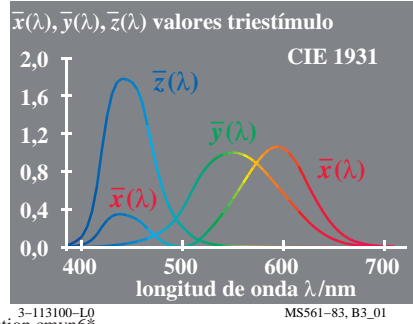
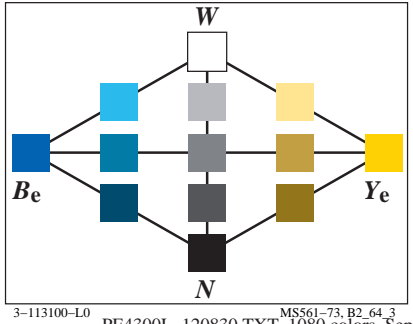
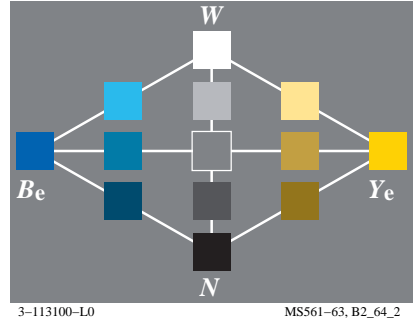
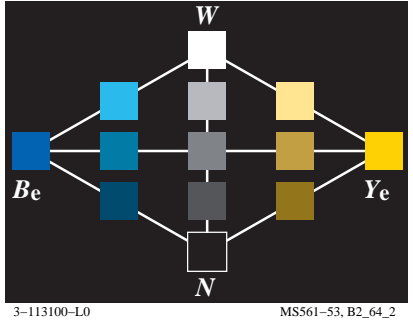
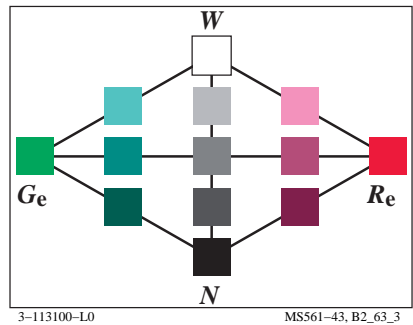
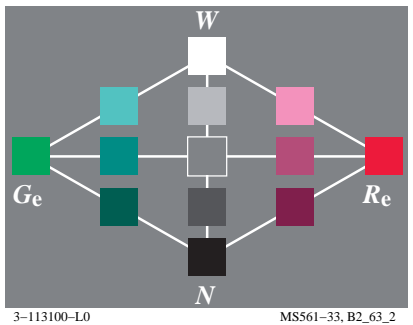
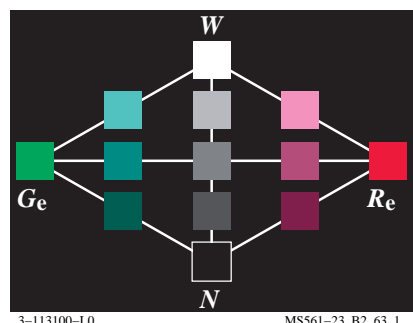
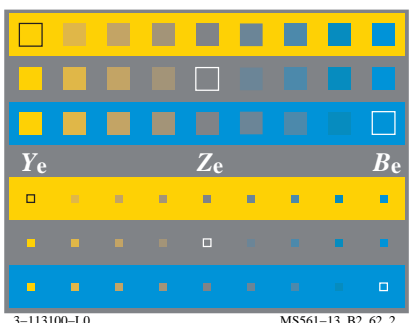
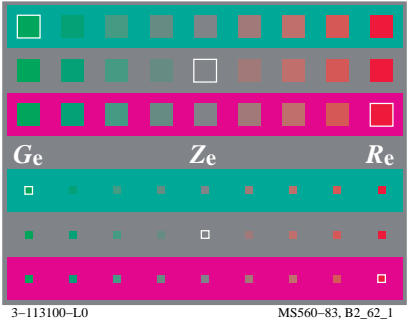
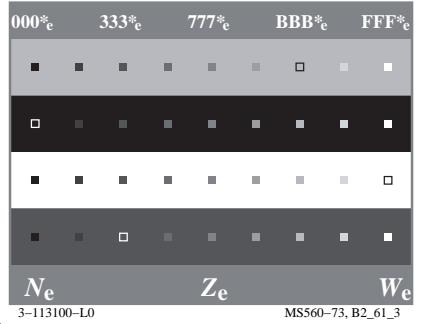
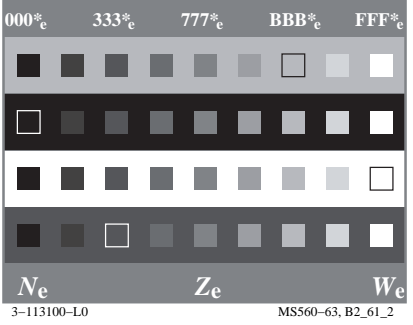
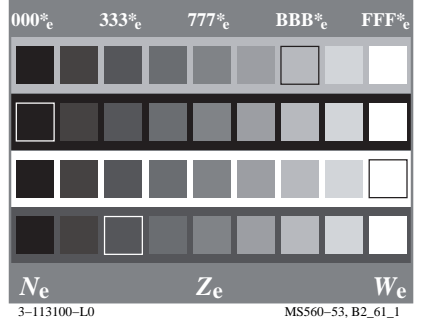
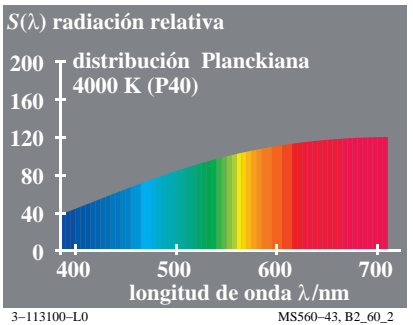
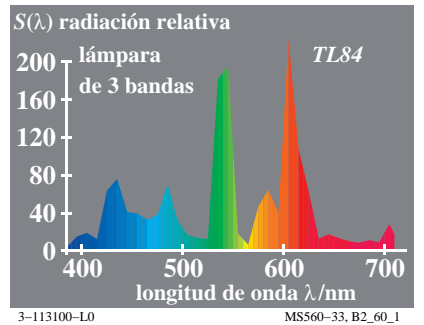
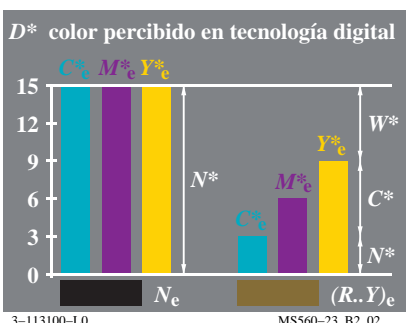
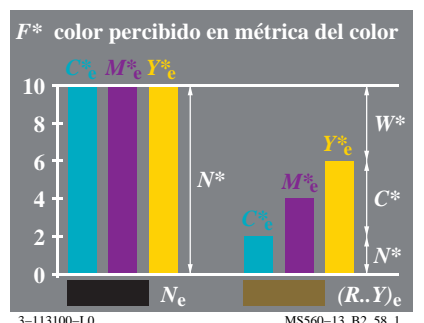


Gráfico TUB-MS56; la gráfica de Ordenador y colorimetry  
Imagine la serie MS56, 3D=1, de=1, L-cmy<sub>6</sub>\*

PE4300L\_120830.TXT, 1080 colors, Separation cmy<sub>6</sub>\*  
entrada: rgb/cmyk -> rgb<sub>de</sub>  
salida: 3D-linealización a rgb\*<sub>de</sub>

