

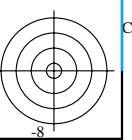
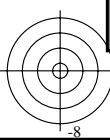
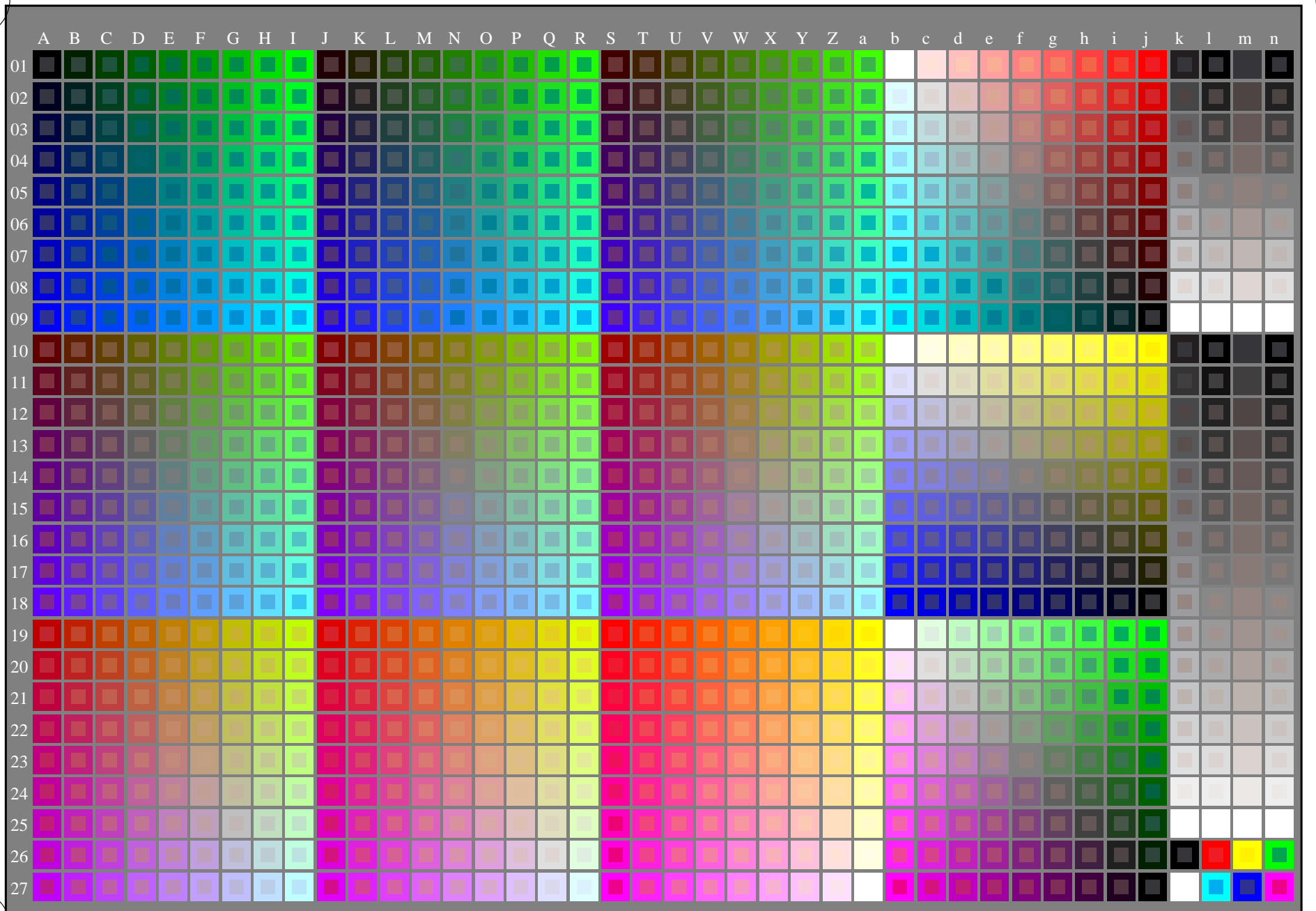
http://130.149.60.45/~farbmetrik/PE43/PE43L0NP.PDF /.PS; start output
N: no 3D-linearization (OL) in file (F) or PS-startup (S), page 1/2



see similar files: <http://130.149.60.45/~farbmetrik/PE43/PE43.HTM>
technical information: <http://www.ps.bam.de> or <http://130.149.60.45/~farbmetrik>

TUB registration: 20130201-PE43/PE43L0NP.PDF /.PS
application for measurement of offset print output

TUB material: code=rh4ta



1-003030-L0 PE430-7N Test chart G with 1080 colours; 9 or 16 step colour scales; data in column (A-n): *rgb* (A_j+k26_n27), 000n (k), w (l), nnn0 (m), www (n) + *cmY0*(all)

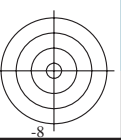
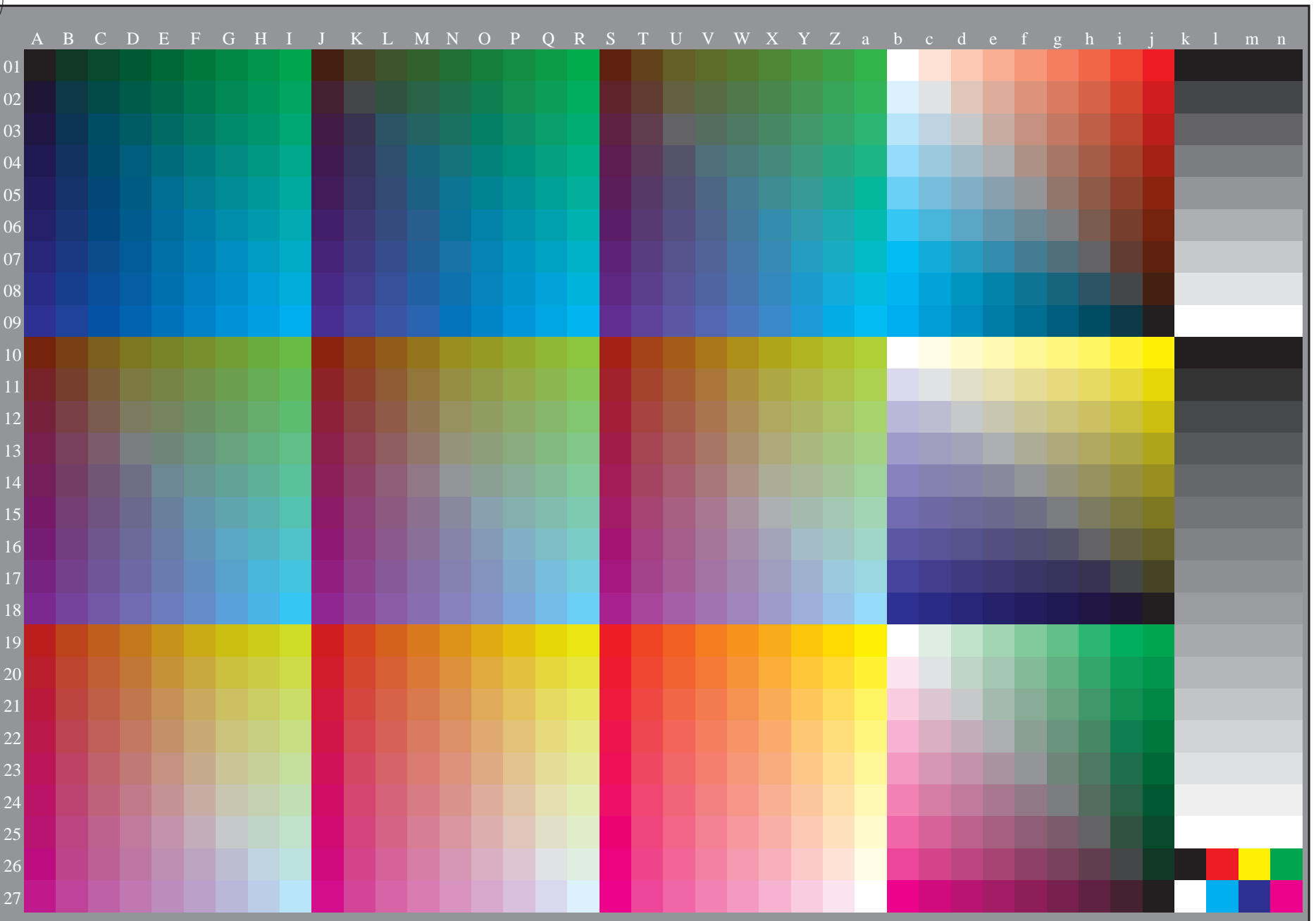
TUB-test chart PE43; standard test chart
1080 standard colours; image technology

input: *rgb/cmyk* -> *rgb/cmyk*
output: no change



see similar files: <http://130.149.60.45/~farbmetrik/PE43/PE43L0NP.PDF> / .PS
technical information: <http://www.ps.bam.de> or <http://130.149.60.45/~farbmetrik>

TUB registration: 20130201-PE43/PE43L0NP.PDF /.PS
application for measurement of offset print output, separation cmyk6 (CMYK)



1-003130-L0

PE430-70

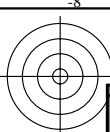
TUB-test chart PE43; standard test chart
1080 standard colours, 3D=0, de=0, cmyk

input: $rgb/cmyk \rightarrow rgb_D$
output: transfer to $cmyk_D$

1-003130-F0



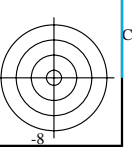
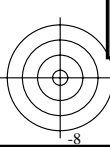
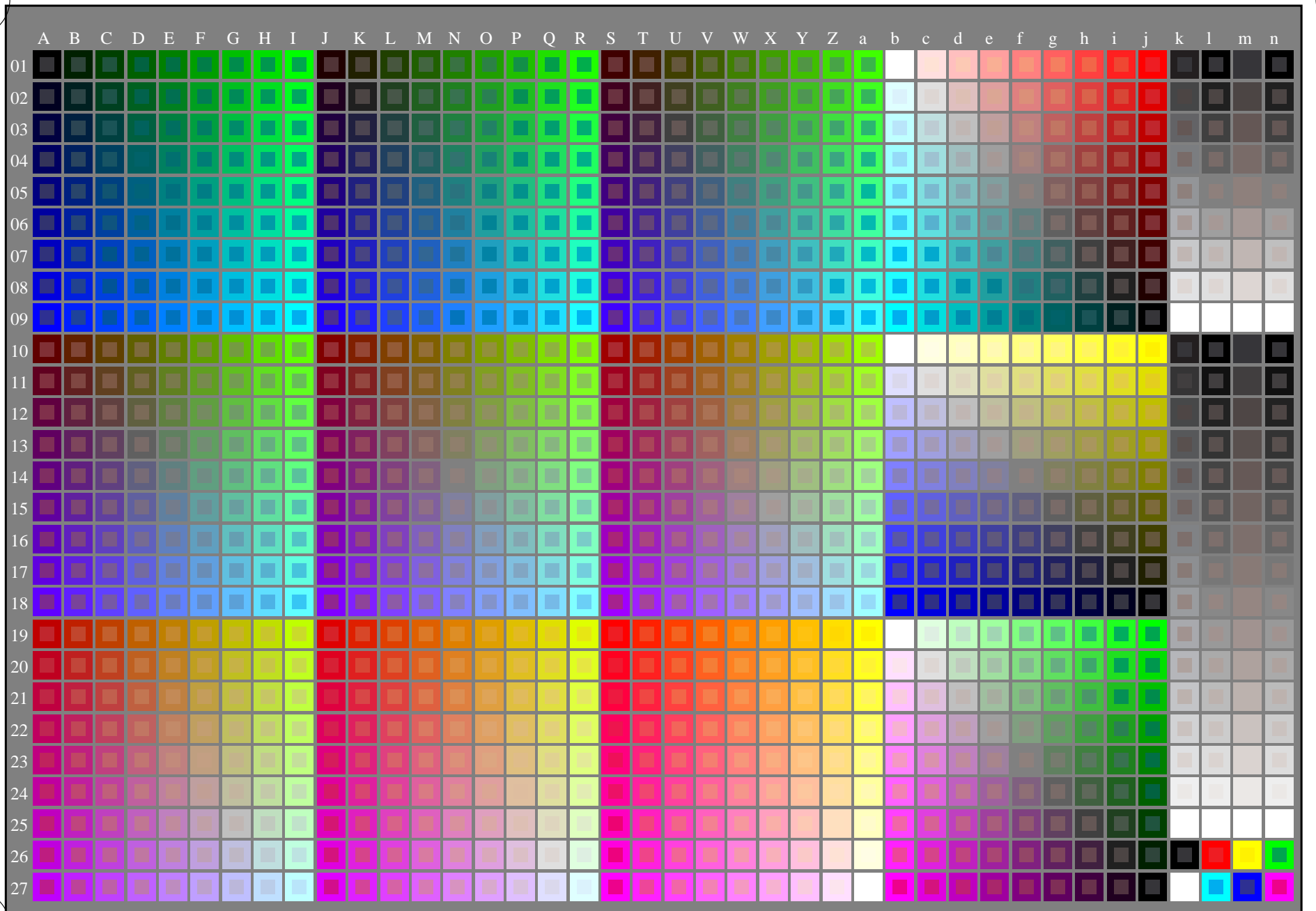
http://130.149.60.45/~farbmetrik/PE43/PE43L0NP.PDF /.PS; start output
N: no 3D-linearization (OL) in file (F) or PS-startup (S), page 1/2



see similar files: <http://130.149.60.45/~farbmetrik/PE43/PE43.HTM>
technical information: <http://www.ps.bam.de> or <http://130.149.60.45/~farbmetrik>

TUB registration: 20130201-PE43/PE43L0NP.PDF /.PS
application for measurement of offset print output

TUB material: code=rh4ta



1-013030-L0 PE430-7N Test chart G with 1080 colours; 9 or 16 step colour scales; data in column (A-n): *rgb* (A_j+k26_n27), 000n (k), w (l), nnn0 (m), www (n) + *cmY0*(all)

TUB-test chart PE43; standard test chart
1080 standard colours; image technology

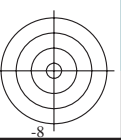
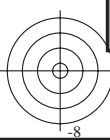
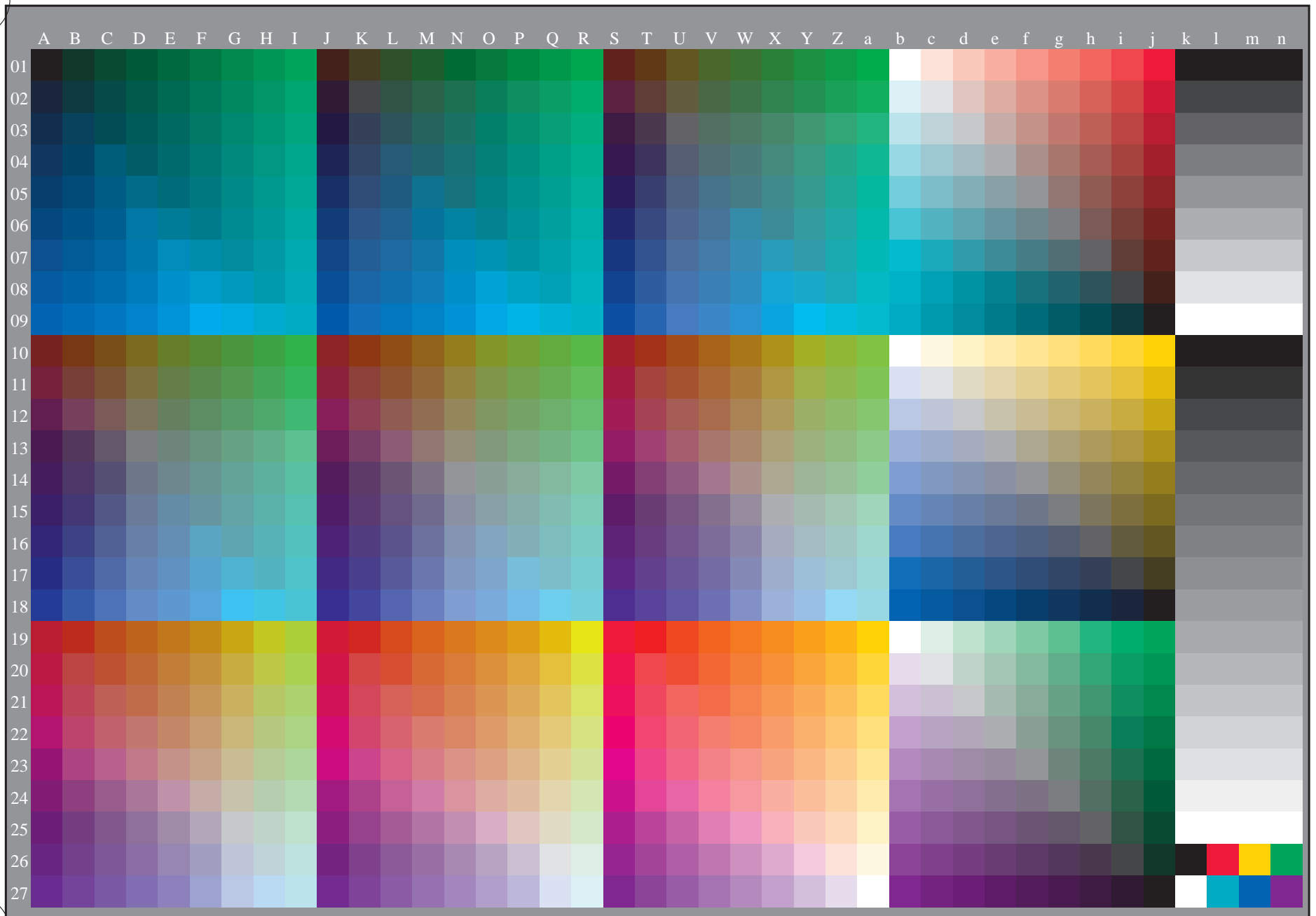
input: *rgb/cmyk* -> *rgb/cmyk*
output: no change

http://130.149.60.45/~farbmetrik/PE43/PE43L0NP.PDF /.PS; transfer output
N: no 3D-linearization (OL) in file (F) or PS-startup (S), page 2/2



see similar files: <http://130.149.60.45/~farbmetrik/PE43/PE43.HTM>
technical information: <http://www.ps.bam.de> or <http://130.149.60.45/~farbmetrik>

TUB registration: 20130201-PE43/PE43L0NP.PDF /.PS TUB material: code=rh4ta
application for measurement of offset print output, separation cmykn6 (CMYK)



1-013130-L0

PE430-71

TUB-test chart PE43; standard test chart
1080 standard colours, 3D=0, de=1, cmyk

input: $rgb/cmyk \rightarrow rgb_e$
output: transfer to $cmyk_e$

1-013130-F0

C

M

Y

O

L

V

C