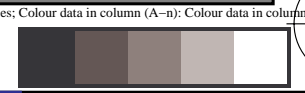
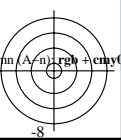
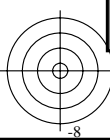
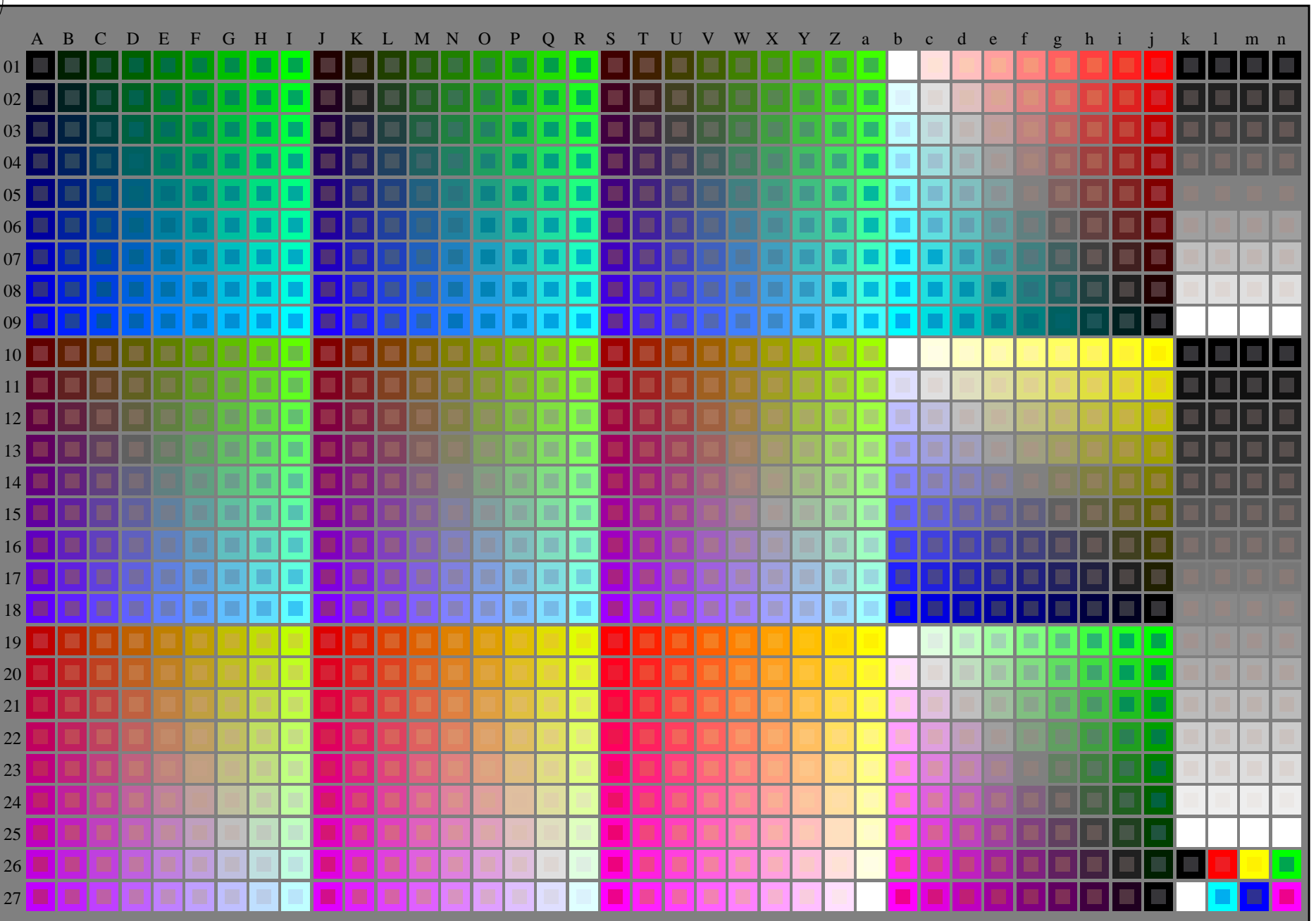


voir fichiers similaires: <http://130.149.60.45/~farbmetrik/PF41/PF41.HTM>  
informations techniques: <http://www.ps.bam.de> ou <http://130.149.60.45/~farbmetrik>

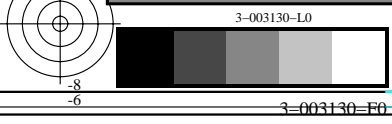
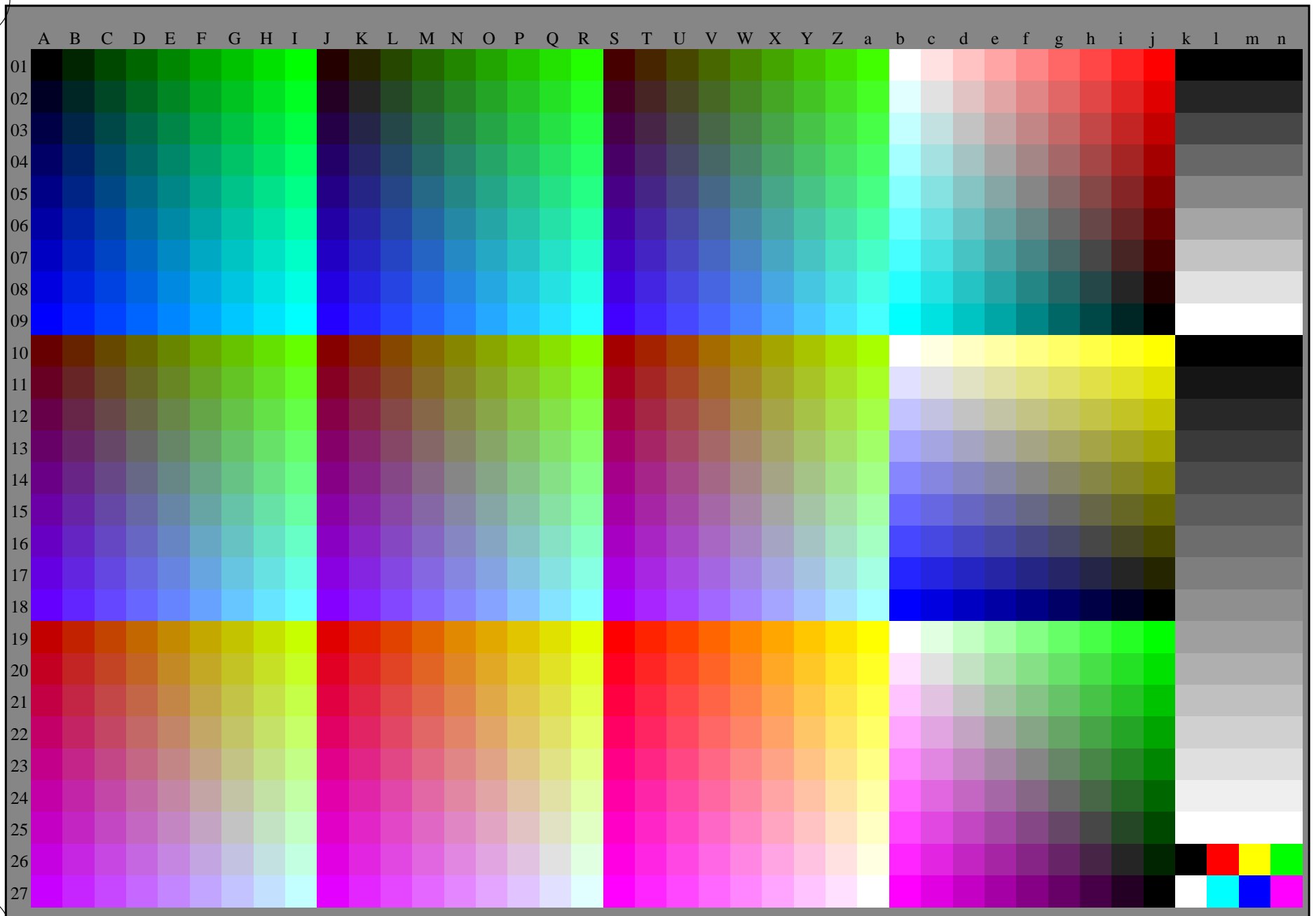
TUB enregistrement: 20130201-PF41/PF41L0NP.PDF /.PS  
application pour la mesure de sortie sur écran

TUB matériel: code=rh4ta



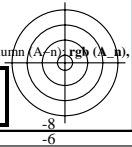
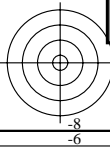
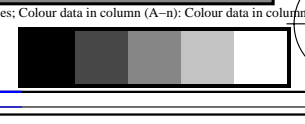
voir fichiers similaires: <http://130.149.60.45/~farbmetrik/PF41/PF41.HTM>  
informations techniques: <http://www.ps.bam.de> ou <http://130.149.60.45/~farbmetrik>

TUB enregistrement: 20130201-PF41/PF41L0NP.PDF /.PS TUB matériel: code=rh4ta  
application pour la mesure de sortie sur écran, aucune séparation



graphique TUB-PF41; échantillon pour le test  
1080 couleur de norme, 3D=0, de=0, sRGB

entrée : rgb/cmyk -> rgb<sub>d</sub>  
sortie : transférer à rgb<sub>d</sub>

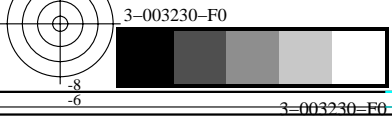


voir fichiers similaires: http://130.149.60.45/~farbmetrik/PF41/PF41.HTM  
informations techniques: http://www.ps.bam.de ou http://130.149.60.45/~farbmetrik

Table with columns: n/j, HIC\*Fa, rgb\_Fa, icf\_Fa, hsi\_Fa, rgb\*Fa, LabCh\*Fa, DE\*Fa, hsiMd, rgb\*Ma, LabCh\*Ma. Contains multiple rows of numerical data representing color calibration parameters.

delta E\* = 0.9

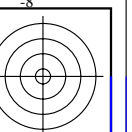
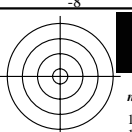
TUB enregistrement: 20130201-PF41/PF41L0NP.PDF /.PS  
application pour la mesure de sortie sur écran, aucune séparation  
TUB matériel: code=rh4ta











voir fichiers similaires: <http://130.149.60.45/~farbmetrik/PF41/PF41L0NP.PDF /.PS>  
informations techniques: <http://www.ps.bam.de> ou <http://130.149.60.45/~farbmetrik>

TUB enregistrement: 20130201 -PF41/PF41L0NP.PDF /.PS  
application pour la mesure de sortie sur écran, aucune séparation  
TUB matériel: code=rha4ta

Table with 29 columns: n, HIC\*Fa, rgb\*Fa, icf\*Fa, hsi\*Fa, rgb\*\*Fa, LabCh\*Fa, rgbb\*\*Fa, LabCh\*\*Fa, DE\*Fa, hsiMd, rgbb\*Ma, LabCh\*Ma. It contains a large grid of numerical data representing color transfer characteristics.

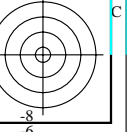
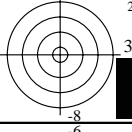












Table with columns for various colorimetric and colorimetric parameters such as HIC\*Fa, rgb\*Fa, iet\*Fa, hsi\*Fa, rGb\*Fa, LabCh\*Fa, rGb\*Ma, LabCh\*Ma, DE\*Fa, hsiMa, rGb\*Ma, and LabCh\*Ma. Each column lists 44 numerical values corresponding to a specific colorimetric or colorimetric parameter for each of the 44 rows. The table is organized into groups of 44 rows each, corresponding to different colorimetric and colorimetric parameters.

voir fichiers similaires: <http://130.149.60.45/~farbmetrik/PF41/PF41.L0NP.PDF> / .PS  
informations techniques: <http://www.ps.bam.de> ou <http://130.149.60.45/~farbmetrik>

TUB enregistrement: 20130201-PF41/PF41L0NP.PDF / .PS  
application pour la mesure de sortie sur écran, aucune séparation  
TUB matériel: code=rh4ta



Table with 15 columns: n, HIC\*Fa, rgb\_Fa, icf\_Fa, hsi\_Fa, rgb\*Fa, LabCh\*Fa, rgbb\*Fa, LabCh\*Fa, DE\*Fa, hsi\_Md, rgbb\*Md, LabCh\*Md. It contains a large grid of numerical data representing colorimetric measurements for various samples.

voir fichiers similaires: http://130.149.60.45/~farbmetrik/PF41/PF41.HTM  
informations techniques: http://www.ps.bam.de ou http://130.149.60.45/~farbmetrik

TUB enregistrement: 20130201-PF41/PF41L0NP.PDF /.PS  
application pour la mesure de sortie sur écran, aucune séparation  
TUB matériel: code=rh4ta

3-0031330-F0

PF410-7N, 14/18-F

delta E\* = 7.3

graphique TUB-PF41; échantillon pour le test  
couleurs et différences, ΔE\*, 3D=0, de=0, sRGB

entrée : rgb/cmyk -> rgbd  
sortie : transférer à rgbd

3-0031330-F0

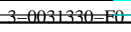


Table with columns for file names (e.g., NW\_100a, BOOR\_100\_012a, etc.), color channels (HIC\*, rgb, icf, hsi, LabCh\*, DE\*, rgb\*, LabCh\*), and numerical values. The table is organized into groups corresponding to the color channels mentioned in the header. The final row indicates 'delta E\*\* = 8.7'.

voir fichiers similaires: <http://130.149.60.45/~farbmetrik/PF41/PF41.HTM>  
informations techniques: <http://www.ps.bam.de> ou <http://130.149.60.45/~farbmetrik>

TUB enregistrement: 20130201 -PF41/PF41L0NP.PDF /.PS  
application pour la mesure de sortie sur écran, aucune séparation  
TUB matériel: code=rh4ta



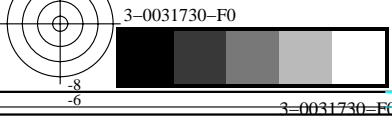




voir fichiers similaires: <http://130.149.60.45/~farbmetrik/PF41/PF41.HTM>  
 informations techniques: <http://www.ps.bam.de> ou <http://130.149.60.45/~farbmetrik>

n	HIC*Fa	rgb_Fa	ier_Fa	hsi_Fa	rgb*Fa	LabCh*Fa	rgb*Fa	LabCh*Fa	DE*Fa	hsiMd	rgb*Ma	LabCh*Ma
1053	NW_086a	0.866 0.866 0.866	0.866 0.0 0.866	360	0.866 0.866 0.866	82.6 0.0 0.0	0.866 0.866 0.866	83.9 0.0 0.0	325.2 1.3	360	1.0 1.0 1.0	95.4 0.0 0.0
1054	NW_093a	0.933 0.933 0.933	0.933 0.0 0.933	360	0.933 0.933 0.933	89.0 0.0 0.0	0.933 0.933 0.933	89.7 0.0 0.0	325.2 0.6	360	1.0 1.0 1.0	95.4 0.0 0.0
1055	NW_100a	1.0 1.0 1.0	1.0 0.0 1.0	360	1.0 1.0 1.0	95.4 0.0 0.0	1.0 1.0 1.0	95.4 0.0 0.0	325.2 0.0	360	1.0 1.0 1.0	95.4 0.0 0.0
1056	NW_000a	0.0 0.0 0.0	0.0 0.0 0.0	360	0.0 0.0 0.0	0.0 0.0 0.0	0.0 0.0 0.0	0.0 0.0 0.0	0.0 0.0 0.0	360	1.0 1.0 1.0	95.4 0.0 0.0
1057	NW_006a	0.066 0.066 0.066	0.066 0.0 0.066	360	0.066 0.066 0.066	6.2 0.0 0.0	0.066 0.066 0.066	4.4 0.0 0.0	326.3 1.8	360	1.0 1.0 1.0	95.4 0.0 0.0
1058	NW_013a	0.133 0.133 0.133	0.133 0.0 0.133	360	0.133 0.133 0.133	12.6 0.0 0.0	0.133 0.133 0.133	12.0 0.0 0.0	325.6 0.6	360	1.0 1.0 1.0	95.4 0.0 0.0
1059	NW_020a	0.2 0.2 0.2	0.2 0.0 0.2	360	0.2 0.2 0.2	19.0 0.0 0.0	0.2 0.2 0.2	19.7 0.0 0.0	325.5 0.6	360	1.0 1.0 1.0	95.4 0.0 0.0
1060	NW_026a	0.266 0.266 0.266	0.266 0.0 0.266	360	0.266 0.266 0.266	25.3 0.0 0.0	0.266 0.266 0.266	27.0 0.0 0.0	325.4 1.6	360	1.0 1.0 1.0	95.4 0.0 0.0
1061	NW_033a	0.333 0.333 0.333	0.333 0.0 0.333	360	0.333 0.333 0.333	31.7 0.0 0.0	0.333 0.333 0.333	34.0 0.0 0.0	325.3 2.2	360	1.0 1.0 1.0	95.4 0.0 0.0
1062	NW_040a	0.4 0.4 0.4	0.4 0.0 0.4	360	0.4 0.4 0.4	38.1 0.0 0.0	0.4 0.4 0.4	40.8 0.0 0.0	325.3 2.6	360	1.0 1.0 1.0	95.4 0.0 0.0
1063	NW_046a	0.466 0.466 0.466	0.466 0.0 0.466	360	0.466 0.466 0.466	44.4 0.0 0.0	0.466 0.466 0.466	47.3 0.0 0.0	325.4 2.8	360	1.0 1.0 1.0	95.4 0.0 0.0
1064	NW_053a	0.533 0.533 0.533	0.533 0.0 0.533	360	0.533 0.533 0.533	50.8 0.0 0.0	0.533 0.533 0.533	53.7 0.0 0.0	325.3 2.9	360	1.0 1.0 1.0	95.4 0.0 0.0
1065	NW_060a	0.6 0.6 0.6	0.6 0.0 0.6	360	0.6 0.6 0.6	57.2 0.0 0.0	0.6 0.6 0.6	60.0 0.0 0.0	325.3 2.8	360	1.0 1.0 1.0	95.4 0.0 0.0
1066	NW_066a	0.666 0.666 0.666	0.666 0.0 0.666	360	0.666 0.666 0.666	63.5 0.0 0.0	0.666 0.666 0.666	66.1 0.0 0.0	325.2 2.6	360	1.0 1.0 1.0	95.4 0.0 0.0
1067	NW_073a	0.734 0.734 0.734	0.734 0.0 0.734	360	0.734 0.734 0.734	70.0 0.0 0.0	0.734 0.734 0.734	72.3 0.0 0.0	325.2 2.2	360	1.0 1.0 1.0	95.4 0.0 0.0
1068	NW_080a	0.8 0.8 0.8	0.8 0.0 0.8	360	0.8 0.8 0.8	76.3 0.0 0.0	0.8 0.8 0.8	78.1 0.0 0.0	325.2 1.8	360	1.0 1.0 1.0	95.4 0.0 0.0
1069	NW_086a	0.866 0.866 0.866	0.866 0.0 0.866	360	0.866 0.866 0.866	82.6 0.0 0.0	0.866 0.866 0.866	83.9 0.0 0.0	325.2 1.3	360	1.0 1.0 1.0	95.4 0.0 0.0
1070	NW_093a	0.933 0.933 0.933	0.933 0.0 0.933	360	0.933 0.933 0.933	89.0 0.0 0.0	0.933 0.933 0.933	89.7 0.0 0.0	325.2 0.6	360	1.0 1.0 1.0	95.4 0.0 0.0
1071	NW_100a	1.0 1.0 1.0	1.0 0.0 1.0	360	1.0 1.0 1.0	95.4 0.0 0.0	1.0 1.0 1.0	95.4 0.0 0.0	325.2 0.0	360	1.0 1.0 1.0	95.4 0.0 0.0
1072	NW_000a	0.0 0.0 0.0	0.0 0.0 0.0	360	0.0 0.0 0.0	0.0 0.0 0.0	0.0 0.0 0.0	0.0 0.0 0.0	0.0 0.0 0.0	360	1.0 1.0 1.0	95.4 0.0 0.0
1073	NW_100a	1.0 1.0 1.0	1.0 0.0 1.0	360	1.0 1.0 1.0	95.4 0.0 0.0	1.0 1.0 1.0	95.4 0.0 0.0	325.2 0.0	360	1.0 1.0 1.0	95.4 0.0 0.0
1074	R00Y_100_100a	1.0 0.0 0.0	1.0 1.0 0.5	390	1.0 0.0 0.0	50.4 76.9 64.5 100.4 40.0	1.0 0.0 0.0	50.4 76.9 64.5 100.4 39.9	0.0 0.0	389	1.0 0.0 0.0	50.4 76.9 64.5 100.4 40.0
1075	G50B_100_100a	0.0 1.0 1.0	1.0 1.0 0.5	210	0.0 1.0 1.0	86.8 -46.1 -13.5 48.1 196.3	0.0 1.0 1.0	86.8 -46.1 -13.5 48.1 196.3	0.0 0.0	210	0.0 1.0 1.0	86.8 -46.1 -13.5 48.1 196.3
1076	Y00G_100_100a	1.0 1.0 0.0	1.0 1.0 0.5	90	1.0 1.0 0.0	92.6 -20.7 90.7 93.0 102.8	1.0 1.0 0.0	92.6 -20.6 90.7 93.0 102.8	0.0 0.0	89	1.0 1.0 0.0	92.6 -20.7 90.7 93.0 102.8
1077	B00R_100_100a	0.0 0.0 1.0	1.0 1.0 0.5	270	0.0 0.0 1.0	30.3 76.0 -103.5 128.5 306.2	0.0 0.0 1.0	30.3 76.0 -103.5 128.5 306.2	0.0 0.0	270	0.0 0.0 1.0	30.3 76.0 -103.5 128.5 306.2
1078	G00B_100_100a	0.0 1.0 0.0	1.0 1.0 0.5	150	0.0 1.0 0.0	83.6 -82.7 79.8 115.0 136.0	0.0 1.0 0.0	83.6 -82.7 79.8 115.0 136.0	0.0 0.0	149	0.0 1.0 0.0	83.6 -82.7 79.8 115.0 136.0
1079	B50R_100_100a	1.0 0.0 1.0	1.0 1.0 0.5	330	1.0 0.0 1.0	57.2 94.3 -58.4 110.9 328.2	1.0 0.0 1.0	57.2 94.3 -58.4 111.0 328.2	0.0 0.0	330	1.0 0.0 1.0	57.2 94.3 -58.4 110.9 328.2

delta E\* = 1.0



TUB enregistrement: 20130201-PF41/PF41L0NP.PDF /.PS  
 application pour la mesure de sortie sur écran, aucune séparation  
 TUB matériel: code=rh4ta