

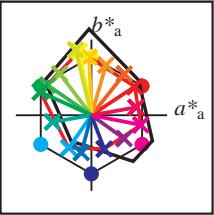
Entrée et sortie: Système Printer Reflective FRS06a

Données de couleurs périphériques (d)  
ou élémentaires (e):

$HIC^*_d$   
code de teinte pour les couleurs de cette page:  
 $H^*_d = R00Y_d, R25Y_d, \dots, B75R_d$

**LRS18a; données CIELAB (a) adaptées**

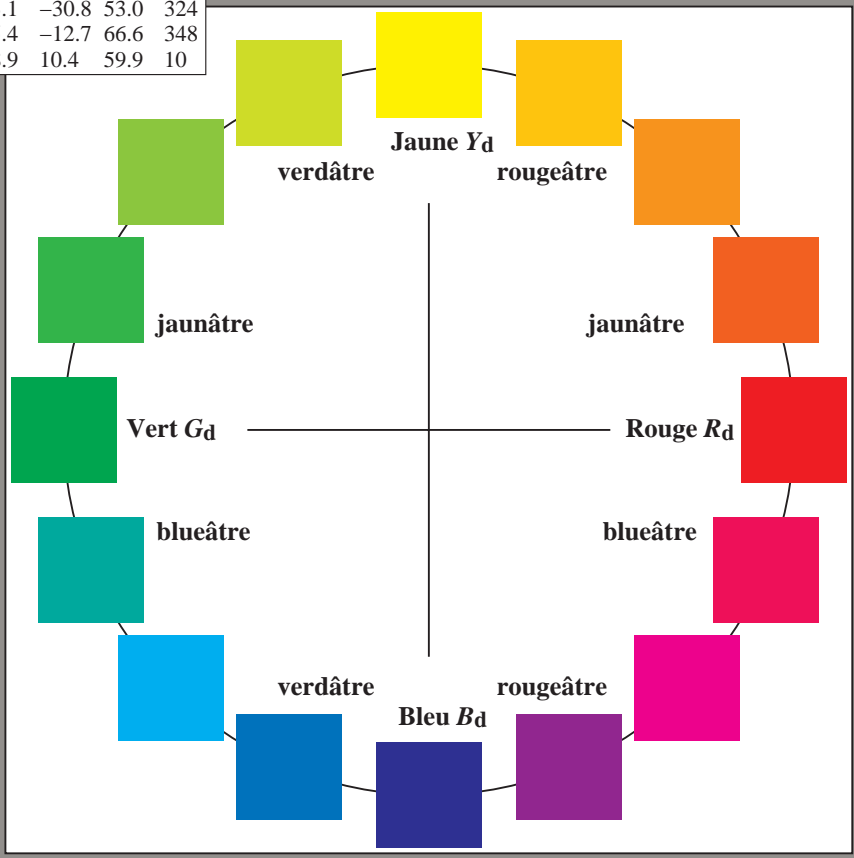
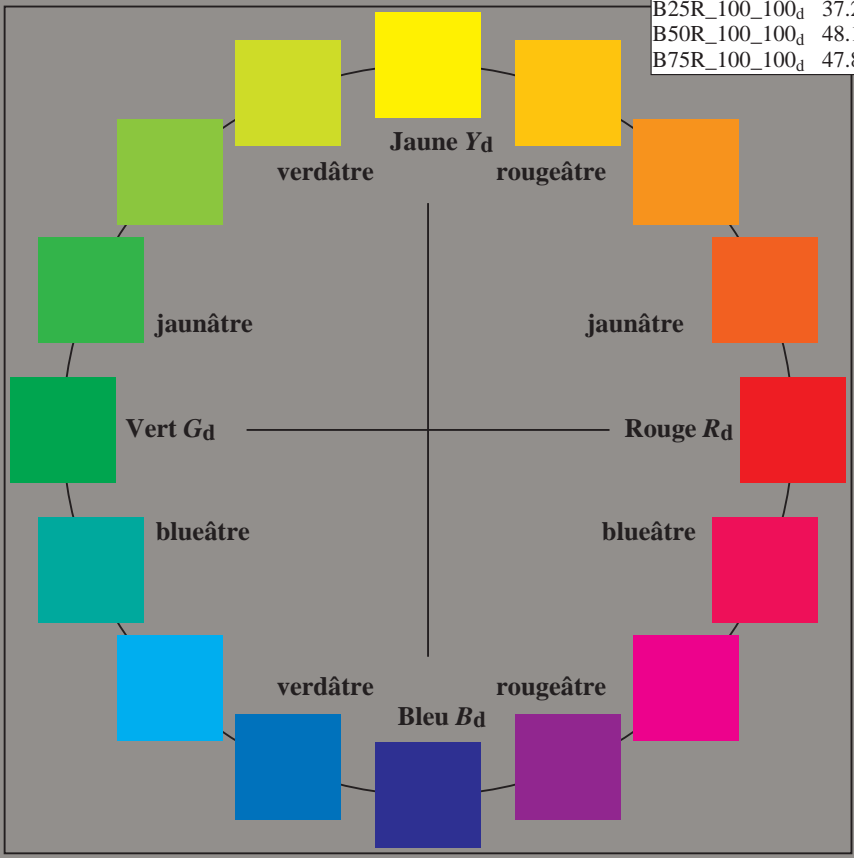
$H^*_d$	$L^*=L^*_a a^*_a$	$b^*_a$	$C^*_{ab,a}$	$h^*_{ab,a}$	
R00Y_100_100_d	47.5	57.2	37.8	68.6	33
R25Y_100_100_d	57.4	43.5	54.5	69.7	51
R50Y_100_100_d	70.5	19.2	66.2	69.0	73
R75Y_100_100_d	83.5	-2.9	76.8	76.9	92
Y00G_100_100_d	91.5	-15.8	84.6	86.1	100
Y25G_100_100_d	90.4	-20.9	86.5	89.0	103
Y50G_100_100_d	70.9	-41.7	54.8	68.9	127
Y75G_100_100_d	60.1	-57.9	39.6	70.2	145
G00B_100_100_d	54.3	-67.6	30.8	74.3	155
G25B_100_100_d	55.0	-51.4	-8.9	52.2	189
G50B_100_100_d	53.1	-30.0	-43.1	52.5	235
G75B_100_100_d	46.1	-13.3	-49.4	51.1	254
B00R_100_100_d	32.5	16.9	-44.6	47.7	290
B25R_100_100_d	37.2	43.1	-30.8	53.0	324
B50R_100_100_d	48.1	65.4	-12.7	66.6	348
B75R_100_100_d	47.8	58.9	10.4	59.9	10



%Gamme  
 $u^*_{rel} = 114$   
%Régularité  
 $g^*_{H,rel} = 28$   
 $g^*_{C,rel} = 38$

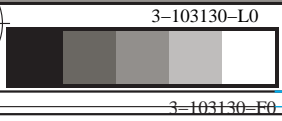
**LRS18a; données CIELAB (a) adaptées**

nom	$L^*=L^*_a a^*_a$	$b^*_a$	$C^*_{ab,a}$	$h^*_{ab,a}$	
R <sub>d, Ma</sub>	47.5	57.2	37.8	68.6	33
Y <sub>d, Ma</sub>	91.5	-15.8	84.6	86.1	100
G <sub>d, Ma</sub>	54.3	-67.6	30.8	74.3	155
C <sub>d, Ma</sub>	53.1	-30.0	-43.1	52.5	235
B <sub>d, Ma</sub>	32.5	16.9	-44.6	47.7	290
M <sub>d, Ma</sub>	48.1	65.4	-12.7	66.6	348
N <sub>d, Ma</sub>	23.8	0.0	0.0	0.0	0
W <sub>d, Ma</sub>	95.8	0.0	0.0	0.0	0
R <sub>d, CIE</sub>	39.9	58.7	27.9	65.0	25
Y <sub>d, CIE</sub>	81.2	-2.8	71.5	71.6	92
G <sub>d, CIE</sub>	52.2	-42.4	13.6	44.5	162
B <sub>d, CIE</sub>	30.5	1.4	-46.4	46.4	271



voir fichiers similaires: <http://130.149.60.45/~farbmetrik/PF89/PF89.PDF>  
Informations techniques: <http://www.ps.bam.de> ou <http://130.149.60.45/~farbmetrik>

TUB enregistrement: 20130201-PF89/PF89L0FP.PDF /.PS  
application pour la mesure des sorties sur imprimante Laser, séparation cmyk\* (CMYK)  
TUB matériel: code=rh4d4a



graphique TUB-PF89; cercle de teinte, 16 étapes  
graphique conforme à DIN 33872, 3D=1, de=0, cmyk\*

entrée : rgb/cmyk -> rgb<sub>dd</sub>  
sortie : linéarisation 3D selon cmyk\*<sub>dd</sub>

