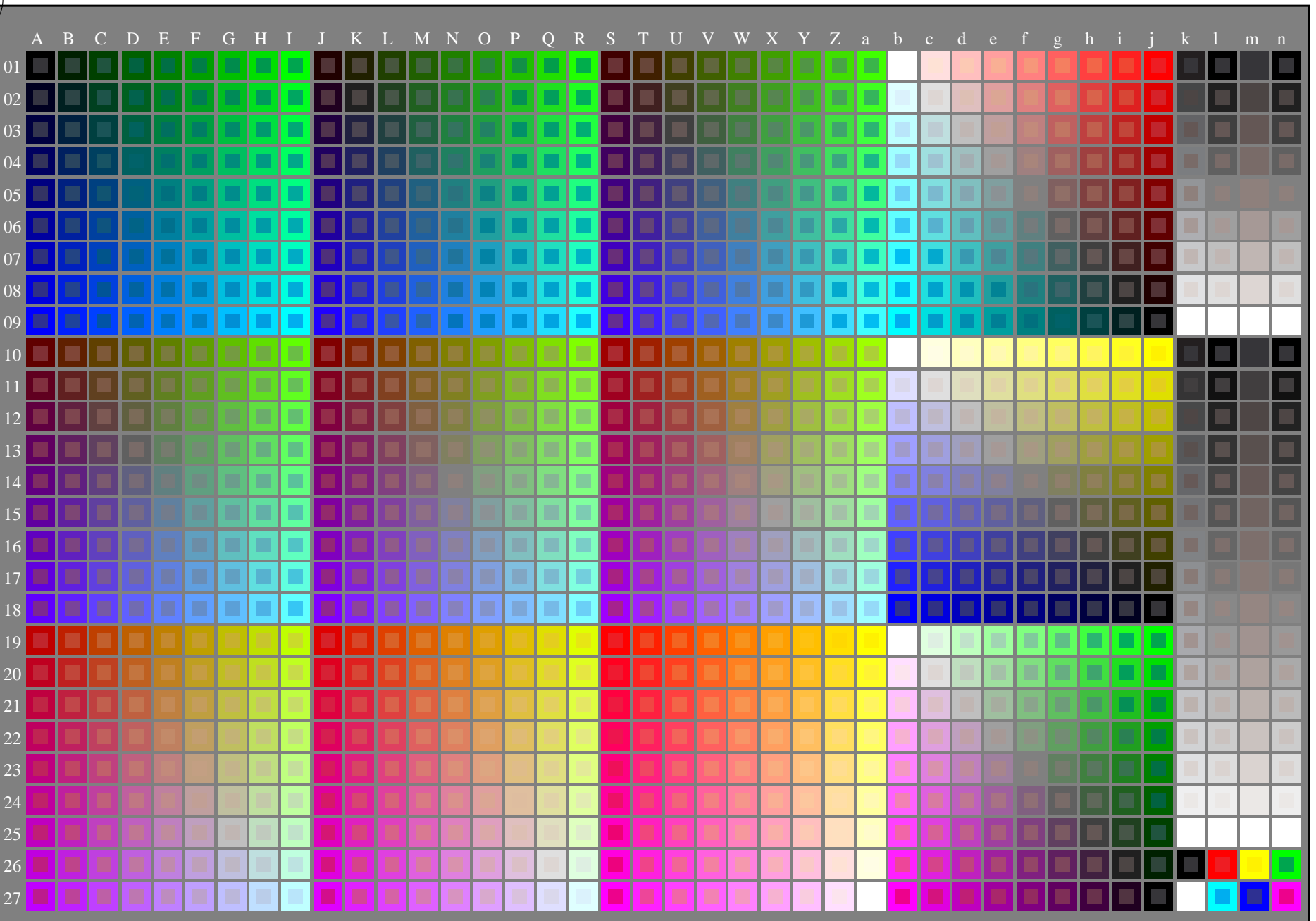


http://130.149.60.45/~farbmetrik/PN43/PN43LONP.PDF /.PS; start output
N: ingen 3D-linearisering (OL) i fil (F) eller PS-startup (S), side 1/2

se lignende filer: <http://130.149.60.45/~farbmetrik/PN43/PN43.HTM>
teknisk informasjon: <http://www.ps.bam.de> eller <http://130.149.60.45/~farbmetrik>

TUB registrering: 20130201-PN43/PN43LONP.PDF /.PS
anvendelse for måling av offsettrykk output

TUB-material: code=rh4ta



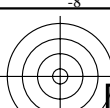
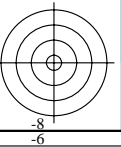
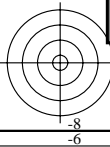
5-003030-L0

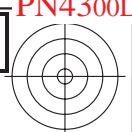
PN430-7N

Prøveplansje G med 1080 farger; 9- eller 16-trinns fargeskala; data i kolonne (A-n): **rgb** (A_j+k26_n27), **000n** (k), **w** (l), **nnn0** (m), **www** (n) + **cmY0**(alle)

TUB-prøveplansje PN43; standard test chart
1080 standard farger; billed-teknologi

input: *rgb/cmyk* -> *rgb/cmyk*
output: ingen endring

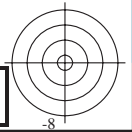
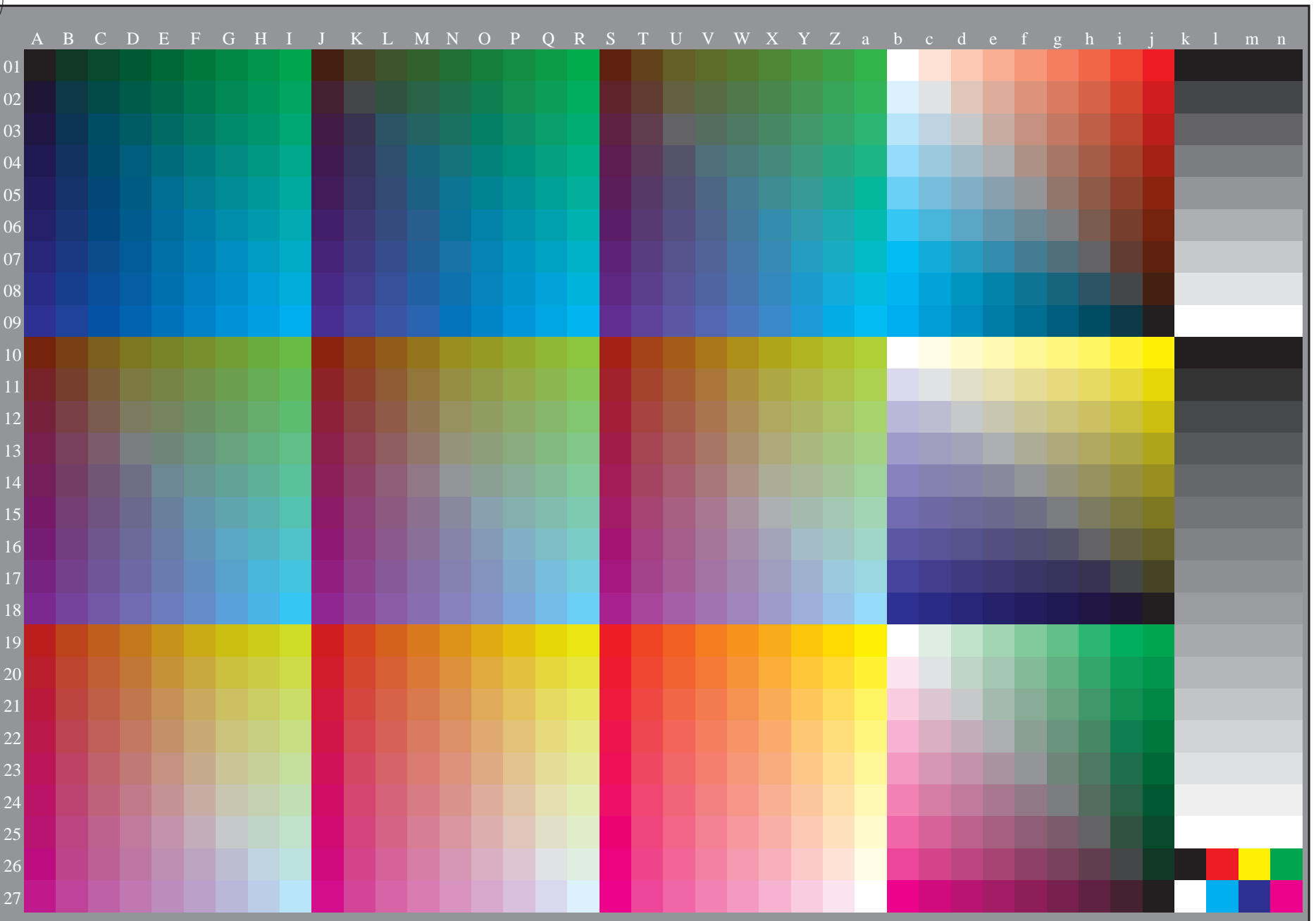




se lignende filer: <http://130.149.60.45/~farbmetrik/PN43/PN43.HTM>
teknisk informasjon: <http://www.ps.bam.de> eller <http://130.149.60.45/~farbmetrik>

TUB registrering: 20130201-PN43/PN43L0NP.PDF /.PS
anvendelse for måling av offsettrykk output, separasjon cmykn6 (CMYK)

TUB-material: code=rh4ta



5-003130-L0

PN430-70

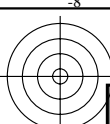
TUB-prøveplansje PN43; standard test chart
1080 standard farger, 3D=0, de=0, cmyk

input: *rgb/cmyk* -> *rgb_d*
output: overføring til *cmyk_d*

5-003130-F0

C M Y O L V

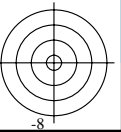
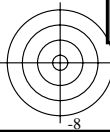
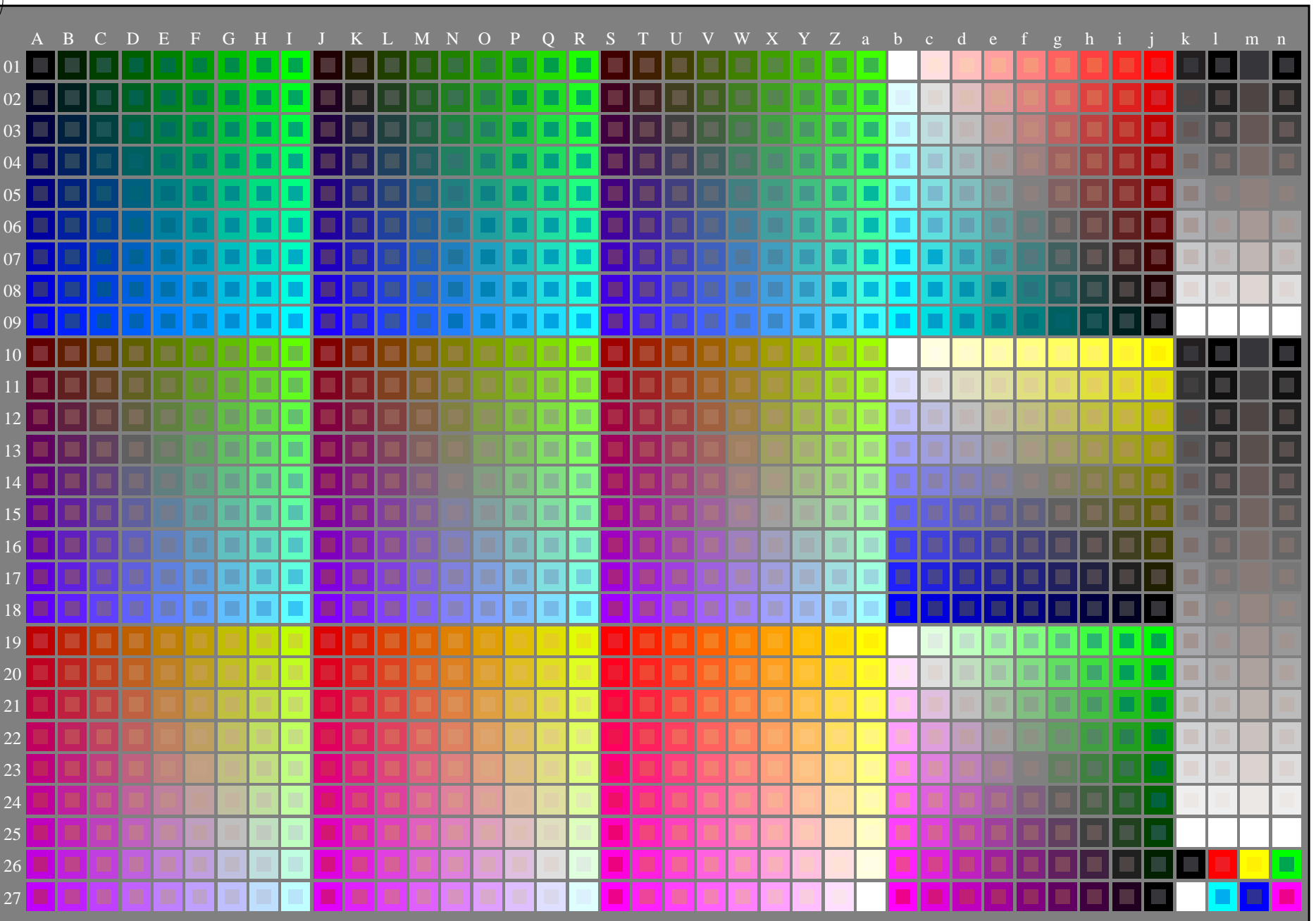
http://130.149.60.45/~farbmetrik/PN43/PN43L0NP.PDF /.PS; start output
N: ingen 3D-linearisering (OL) i fil (F) eller PS-startup (S), side 1/2



se lignende filer: <http://130.149.60.45/~farbmetrik/PN43/PN43.HTM>
teknisk informasjon: <http://www.ps.bam.de> eller <http://130.149.60.45/~farbmetrik>

TUB registrering: 20130201-PN43/PN43L0NP.PDF /.PS
anvendelse for måling av offsettrykk output

TUB-material: code=rh4ta



5-013030-L0

PN430-7N

Prøveplansje G med 1080 farger; 9- eller 16-trinns fargeskala; data i kolonne (A-n): **rgb** (A_j+k26_n27), **000n** (k), **w** (l), **nnn0** (m), **www** (n) + **cmY0**(alle)

TUB-prøveplansje PN43; standard test chart
1080 standard farger; billed-teknologi

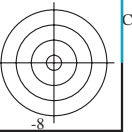
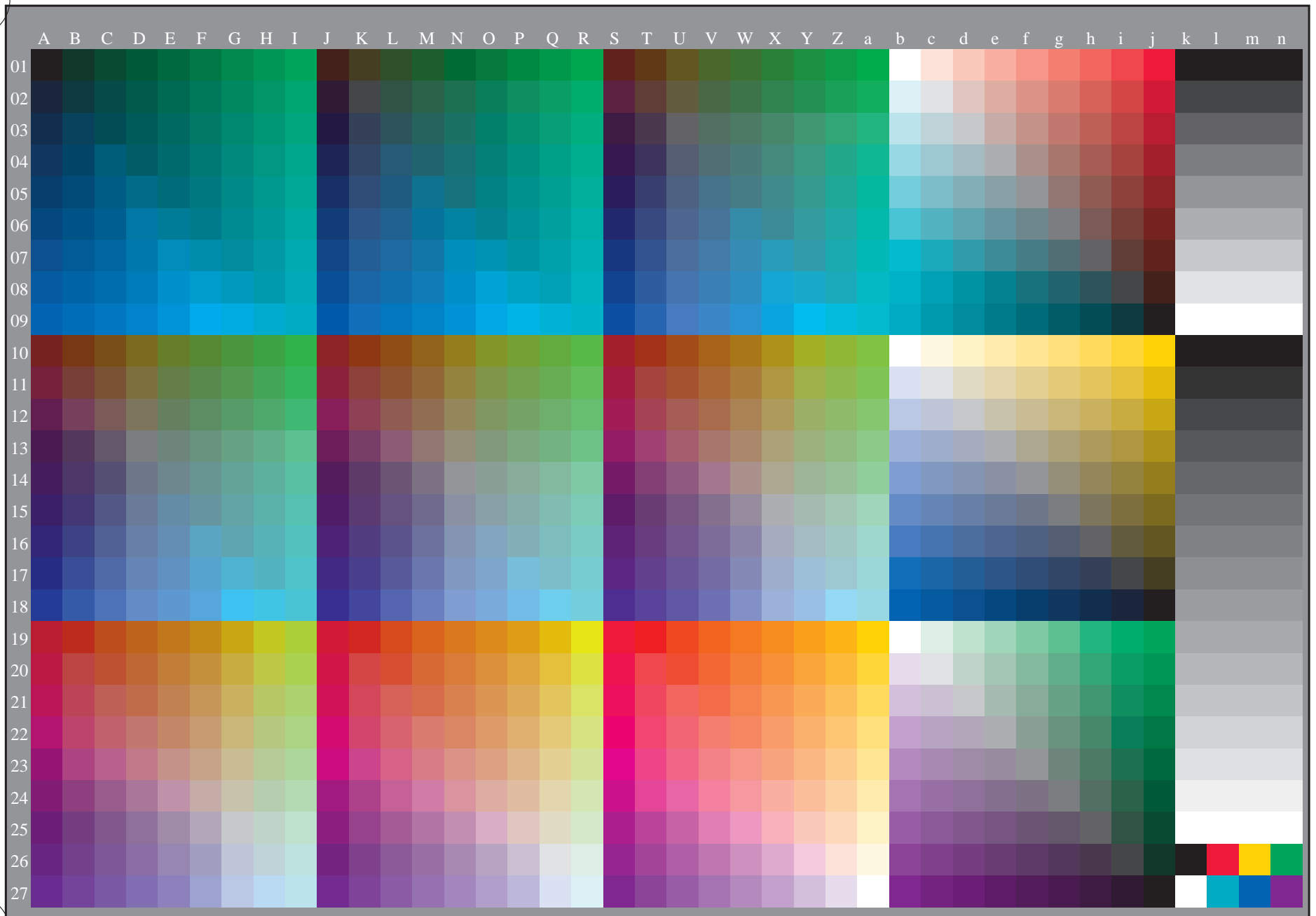
input: *rgb/cmyk* -> *rgb/cmyk*
output: ingen endring

http://130.149.60.45/~farbmetrik/PN43/PN43LONP.PDF /.PS; overføring output
N: ingen 3D-linearisering (OL) i fil (F) eller PS-startup (S), side 2/2



se lignende filer: <http://130.149.60.45/~farbmetrik/PN43/PN43.HTM>
teknisk informasjon: <http://www.ps.bam.de> eller <http://130.149.60.45/~farbmetrik>

TUB registrering: 20130201-PN43/PN43LONP.PDF /.PS
anvendelse for måling av offsettrykk output, separasjon cmyk6 (CMYK)
TUB-material: code=rh4ta



5-013130-L0

PN430-71

TUB-prøveplansje PN43; standard test chart
1080 standard farger, 3D=0, de=1, cmyk

input: *rgb/cmyk* -> *rgbe*
output: overføring til *cmyke*

5-013130-F0

