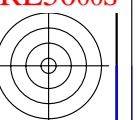
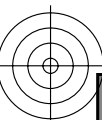


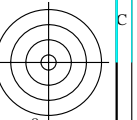
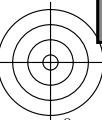
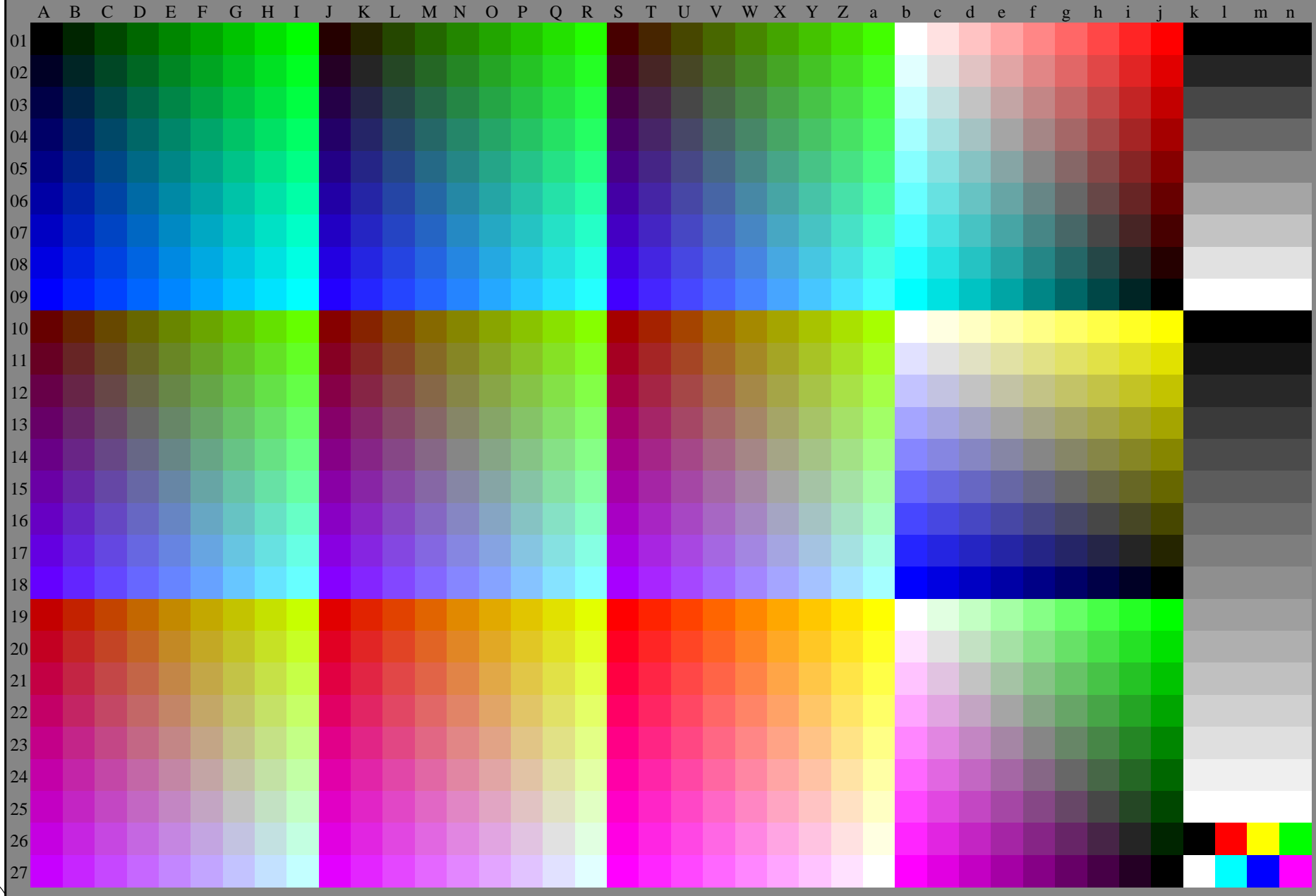
http://130.149.60.45/~farbmetrik/RE50/RE50LONP.PDF /.PS; transfer output  
N: no 3D-linearization (OL) in file (F) or PS-startup (S), page 2/2



see similar files: <http://130.149.60.45/~farbmetrik/RE50/RE50LONP.PDF /.PS>  
technical information: <http://www.ps.bam.de> or <http://130.149.60.45/~farbmetrik>

TUB registration: 20130201-RE50/RE50LONP.PDF /.PS  
application for measurement of display output, no separation

TUB material: code=thada4ta



1-003130-L0 RE500-70

Test chart G with 40x27=1080 colours; digital equidistant 9 or 16 step colour scales; Colour data in column (A-n): *rgb* (A\_n), 3D = 0

TUB-test chart RE50; 1080 standard colours  
Test chart according to DIN 33872, 3D=0, de=0, *sRGB*

input: *rgb/cmyk* -> *rgb<sub>d</sub>*  
output: transfer to *rgb<sub>d</sub>*

1-003130-F0