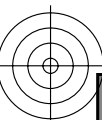


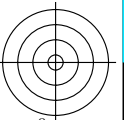
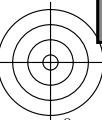
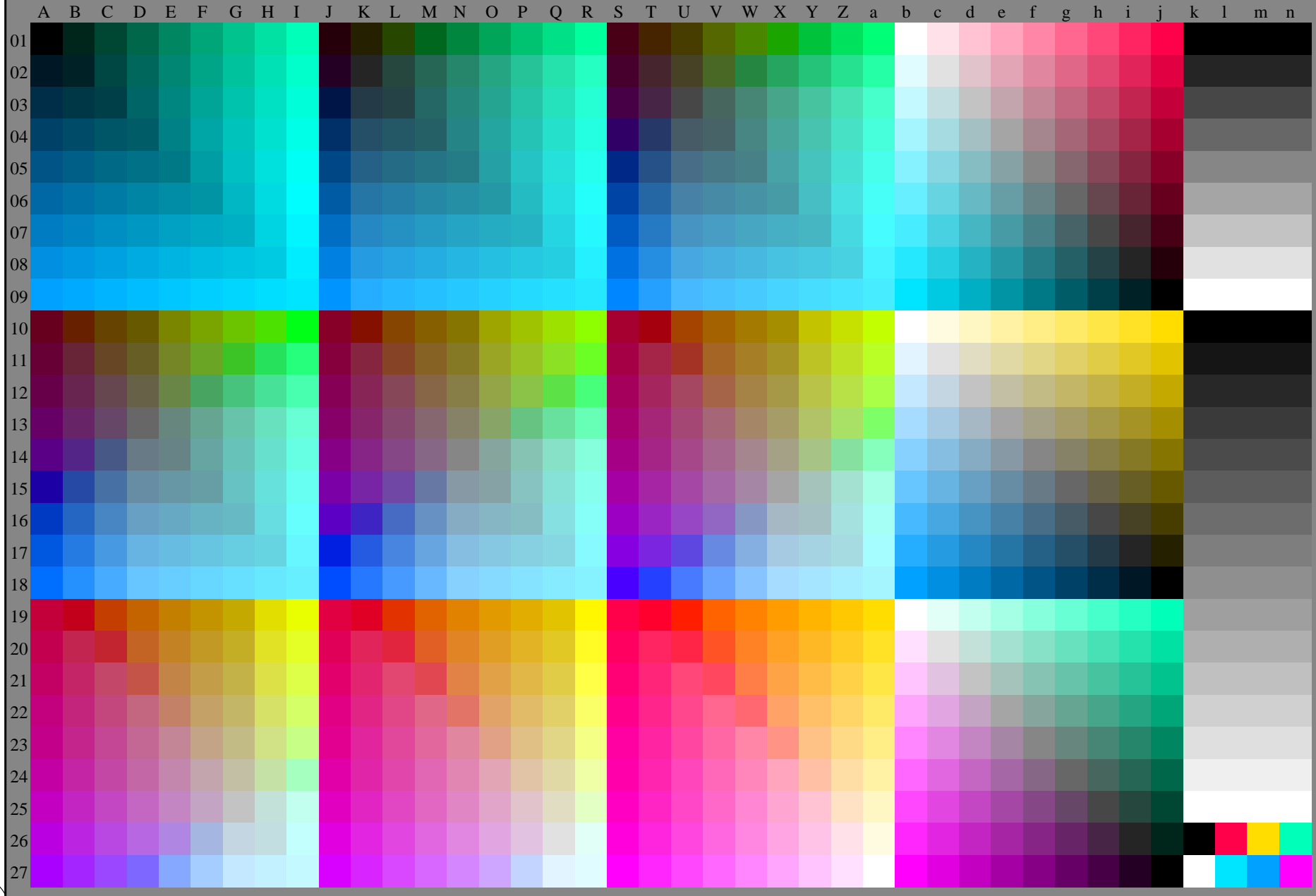
http://130.149.60.45/~farbmetrik/RE50/RE50LONP.PDF /.PS; transfer output
N: no 3D-linearization (OL) in file (F) or PS-startup (S), page 2/2



see similar files: <http://130.149.60.45/~farbmetrik/RE50/RE50LONP.PDF /.PS>;
technical information: <http://www.ps.bam.de> or <http://130.149.60.45/~farbmetrik>

TUB registration: 20130201-RE50/RE50LONP.PDF /.PS
application for measurement of display output, no separation

TUB material: code=thad4ta



1-013130-L0 RE500-71

Test chart G with 40x27=1080 colours; digital equidistant 9 or 16 step colour scales; Colour data in column (A-n): *rgb* (A_n), 3D = 0

TUB-test chart RE50; 1080 standard colours
Test chart according to DIN 33872, 3D=0, de=1, *sRGB*

input: *rgb/cmyk* -> *rgbe*
output: transfer to *rgbe*

1-013130-F0

