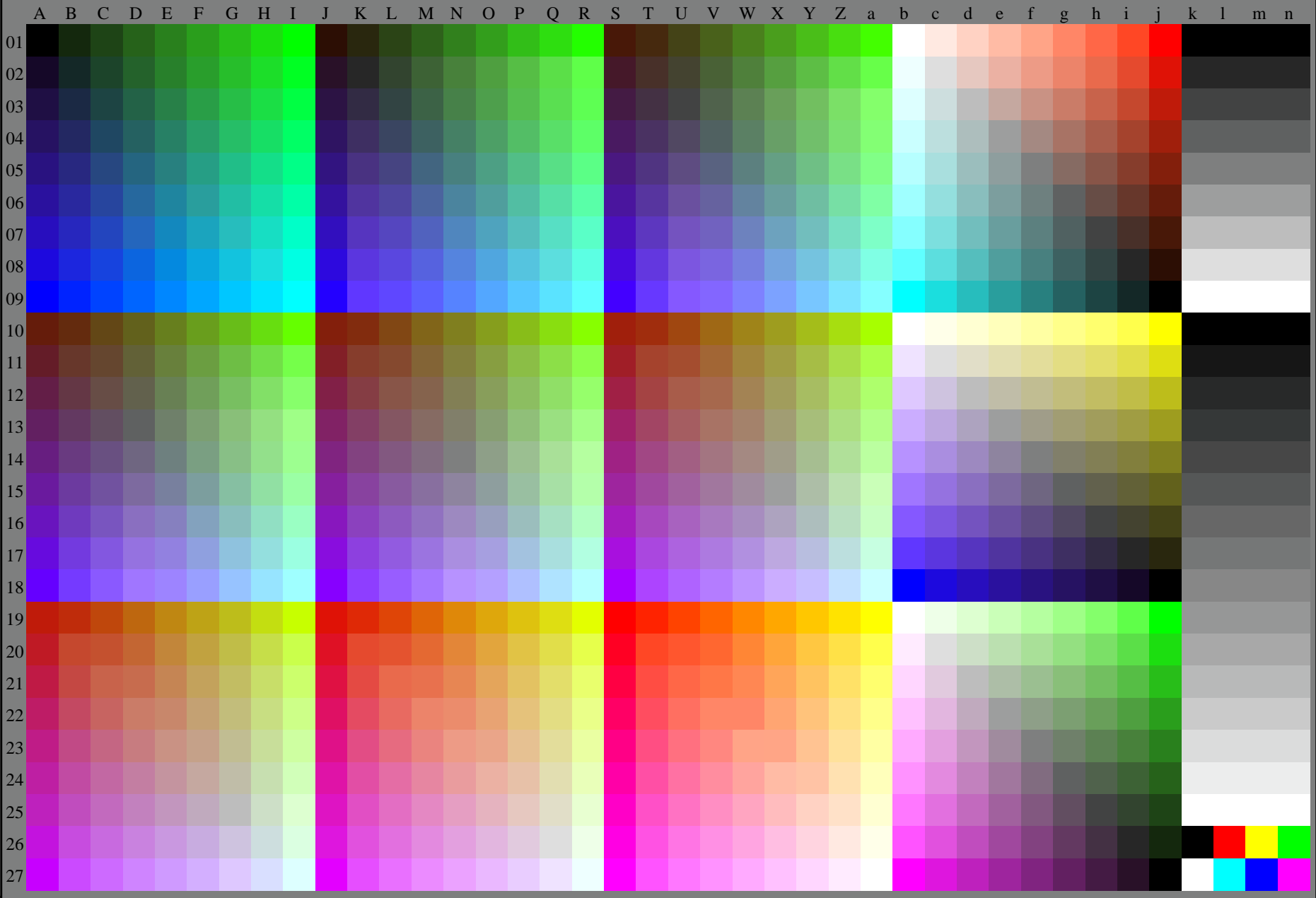


http://130.149.60.45/~farbmetrik/RE50/RE50L0FP.PDF /.PS; 3D-linearization
F: 3D-linearization RE50/RE50LE30FP.DAT in file (F), page 2/2

see similar files: <http://130.149.60.45/~farbmetrik/RE50/RE50L0FP.PDF> / .PS
technical information: <http://www.ps.bam.de> or <http://130.149.60.45/~farbmetrik>

TUB registration: 20130201-RE50/RE50L0FP.PDF /.PS
application for measurement of display output, no separation

TUB material: code=thad4ta



Test chart G with 40x27=1080 colours; digital equidistant 9 or 16 step colour scales; Colour data in column (A-n): *rgb* (A_n), 3D = 1

TUB-test chart RE50; 1080 standard colours
Test chart according to DIN 33872, 3D=1, de=0, *sRGB**

input: *rgb/cmyk* -> *rgb_{dd}*
output: 3D-linearization to *rgb_{dd}**

1-103130-L0 RE500-72

1-103130-F0

