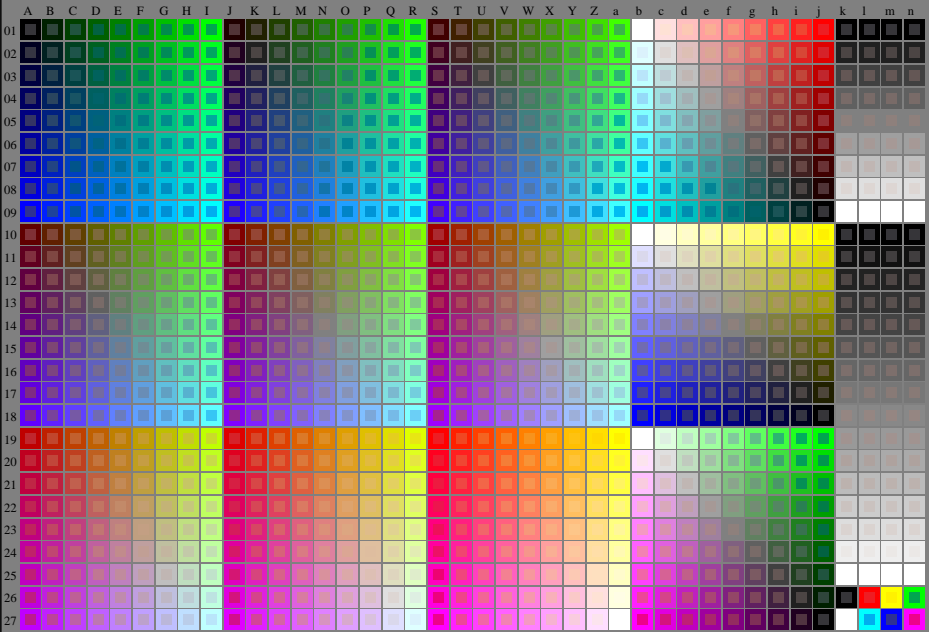


http://130.149.60.45/~farbmetrik/RE50/RE50LONI.TXT /.PS; start output
N: no 3D-linearization (OL) in file (F) or PS-startup (S), page 1/1

see similar files: <http://130.149.60.45/~farbmetrik/RE50/RE50.HTM>
technical information: <http://www.ps.bam.de> or <http://130.149.60.45/~farbmetrik>



TUB registration: 20130201-RE50/RE50LONI.TXT /.PS
application for measurement of display output

TUB material: code=rhata

1-003030-L0 RE500-7N

Test chart G with 40x27=1080 colours; digital equidistant 9 or 16 step colour scales; Colour data in columns (A-n): *rgb* + *cmY0* (A, J + *k26_s27*), *000a* (k), *w* (l), *sm00* (m), *www* (n), *3D* = 0

TUB-test chart RE50; 1080 standard colours
Test chart according to DIN 33872, 3D=0, de=0, *sRGB*

input: *rgb/cmyk* -> *rgb/cmyk*
output: no change

