

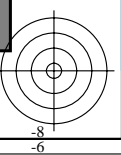
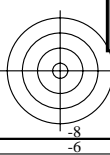
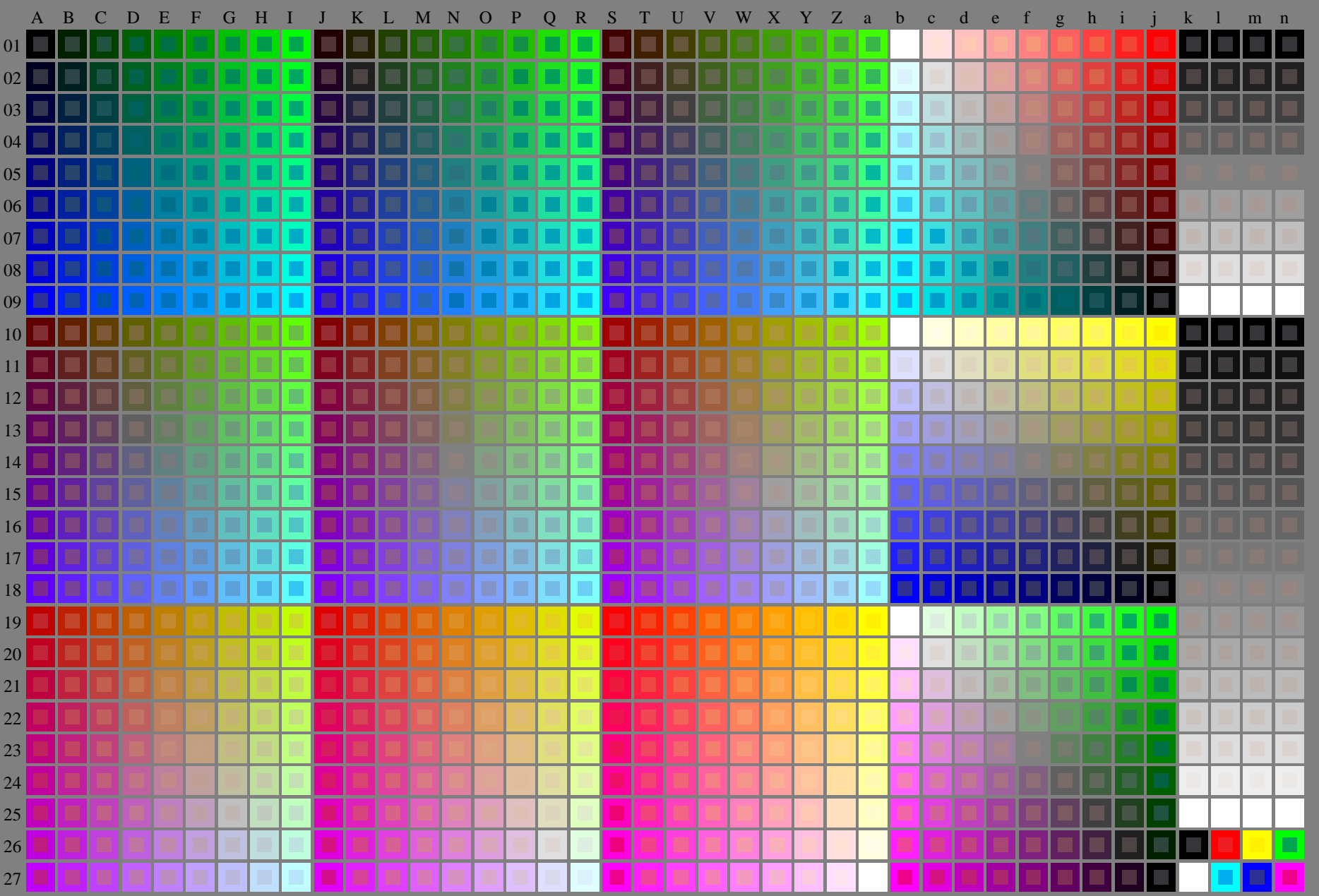
http://130.149.60.45/~farbmetrik/RE50/RE50LONA.TXT /.PS; start output  
N: no 3D-linearization (OL) in file (F) or PS-startup (S), page 1/2



see similar files: <http://130.149.60.45/~farbmetrik/RE50/RE50.HTM>  
technical information: <http://www.ps.bam.de> or <http://130.149.60.45/~farbmetrik>

TUB registration: 20130201-RE50/RE50LONA.TXT /.PS  
application for measurement of display output

TUB material: code=rh4ta



1-003030-L0 RE500-7N

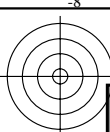
Test chart G with 40x27=1080 colours; digital equidistant 9 or 16 step colour scales; Colour data in column (A-n):  $rgb + cmy0$  (A\_j + k26\_n27), 000n (k), w (l), nnn0 (m), www (n), 3D = 0

TUB-test chart RE50; 1080 standard colours  
Test chart according to DIN 33872, 3D=0, de=0, sRGB

input:  $rgb/cmyk \rightarrow rgb/cmyk$   
output: no change



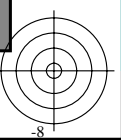
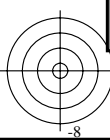
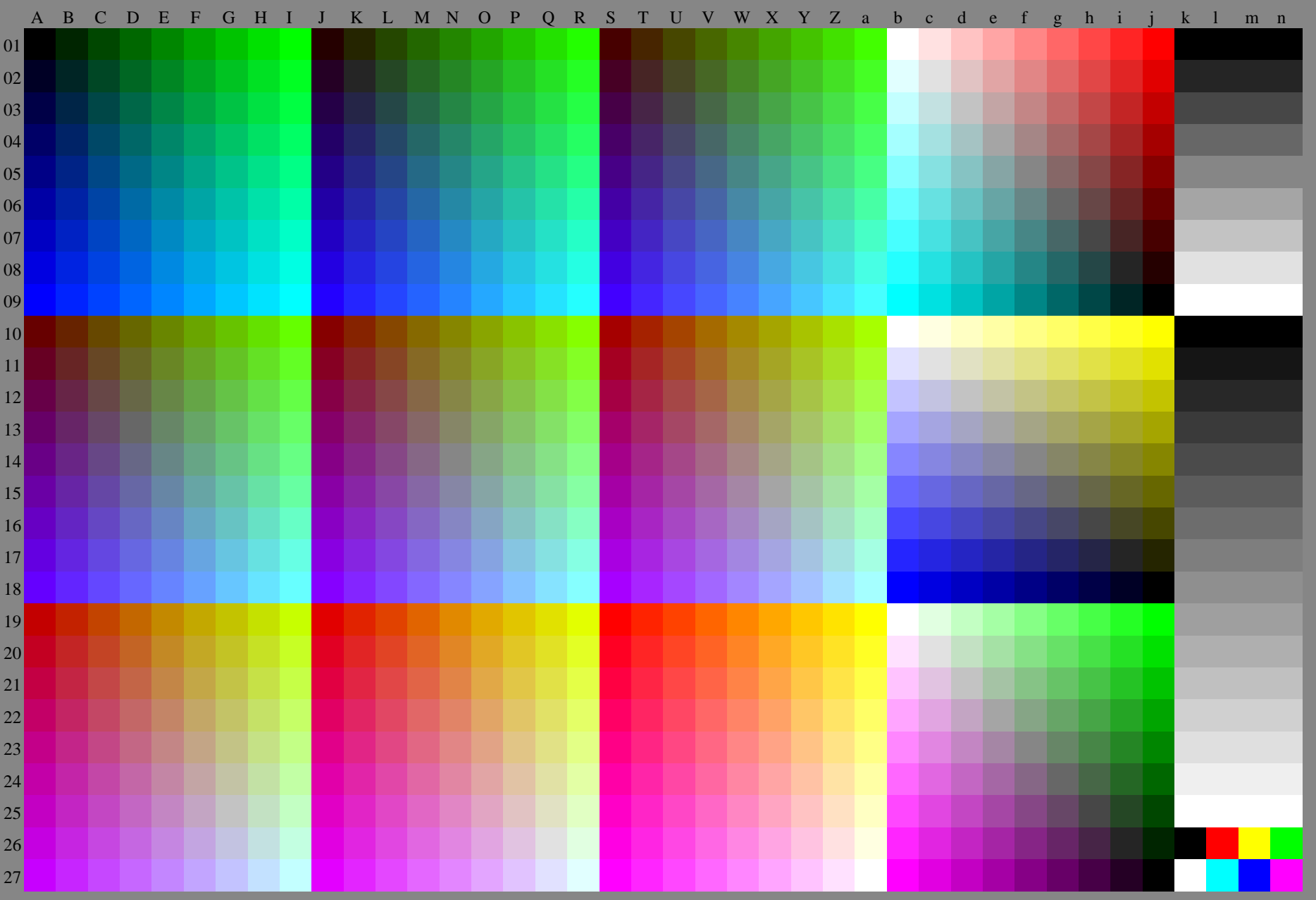
http://130.149.60.45/~farbmetrik/RE50/RE50LONA.TXT /.PS; transfer output  
N: no 3D-linearization (OL) in file (F) or PS-startup (S), page 2/2



see similar files: <http://130.149.60.45/~farbmetrik/RE50/RE50LONA.TXT> / .PS  
technical information: <http://www.ps.bam.de> or <http://130.149.60.45/~farbmetrik>

TUB registration: 20130201-RE50/RE50LONA.TXT /.PS  
application for measurement of display output, no separation

TUB material: code=rh4ta



1-003130-L0 RE500-70

Test chart G with 40x27=1080 colours; digital equidistant 9 or 16 step colour scales; Colour data in column (A-n):  $rgb(A_n, 3D=0)$

TUB-test chart RE50; 1080 standard colours  
Test chart according to DIN 33872, 3D=0, de=0, sRGB

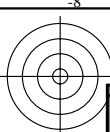
input:  $rgb/cmyk \rightarrow rgb_d$   
output: transfer to  $rgb_d$

1-003130-F0

C M Y O L V



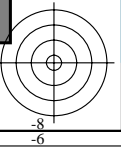
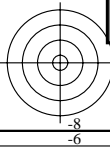
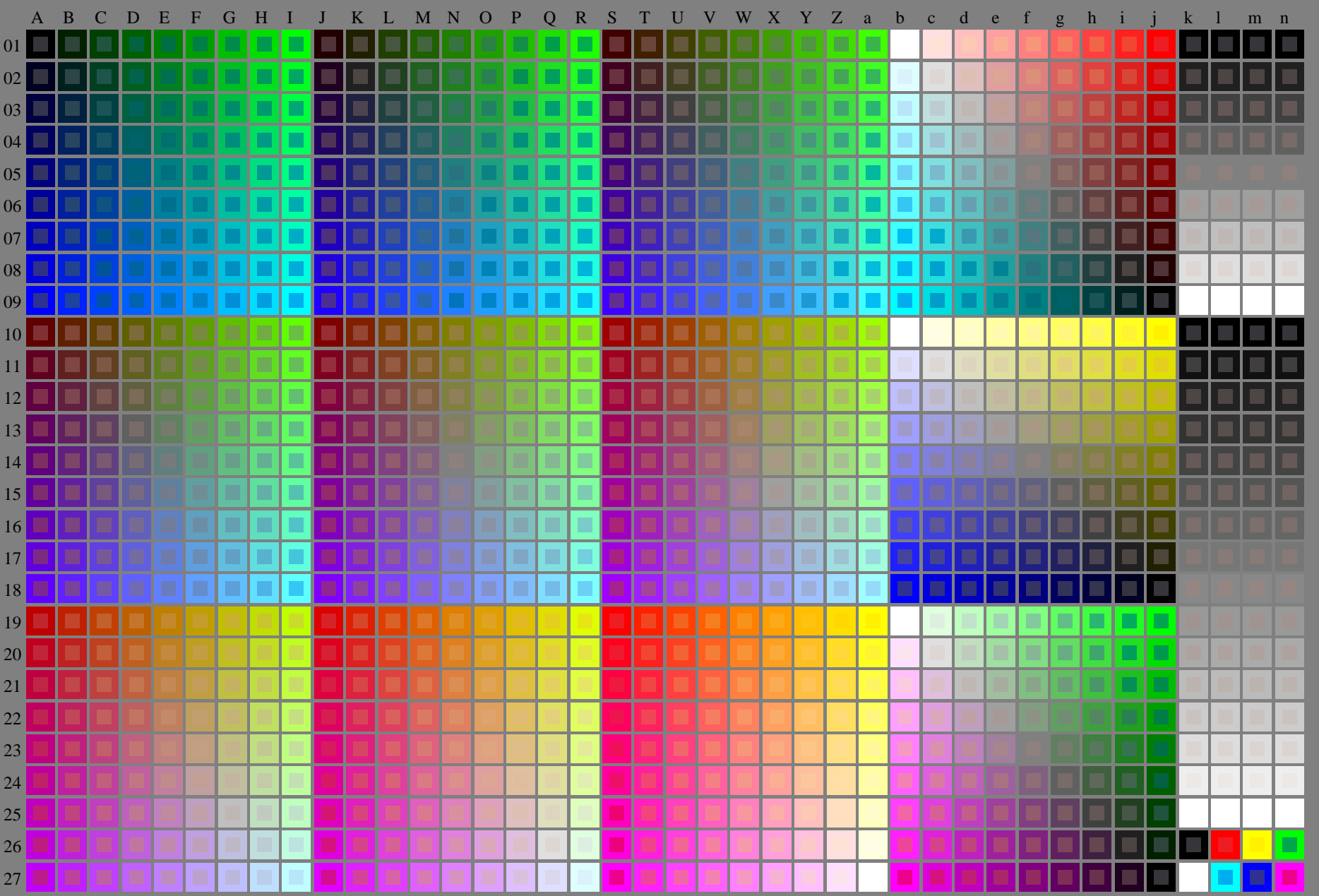
http://130.149.60.45/~farbmetrik/RE50/RE50LONA.TXT /.PS; start output  
N: no 3D-linearization (OL) in file (F) or PS-startup (S), page 1/2



see similar files: <http://130.149.60.45/~farbmetrik/RE50/RE50.HTM>  
technical information: <http://www.ps.bam.de> or <http://130.149.60.45/~farbmetrik>

TUB registration: 20130201-RE50/RE50LONA.TXT /.PS  
application for measurement of display output

TUB material: code=rh4ta



1-013030-L0 RE500-7N

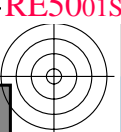
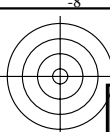
Test chart G with 40x27=1080 colours; digital equidistant 9 or 16 step colour scales; Colour data in column (A-n):  $rgb + cmy0 (A_j + k26_n27), 000n (k), w (l), nnn0 (m), www (n), 3D = 0$

TUB-test chart RE50; 1080 standard colours  
Test chart according to DIN 33872, 3D=0, de=1, sRGB

input:  $rgb/cmyk \rightarrow rgb/cmyk$   
output: no change



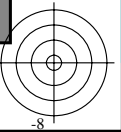
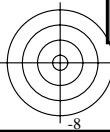
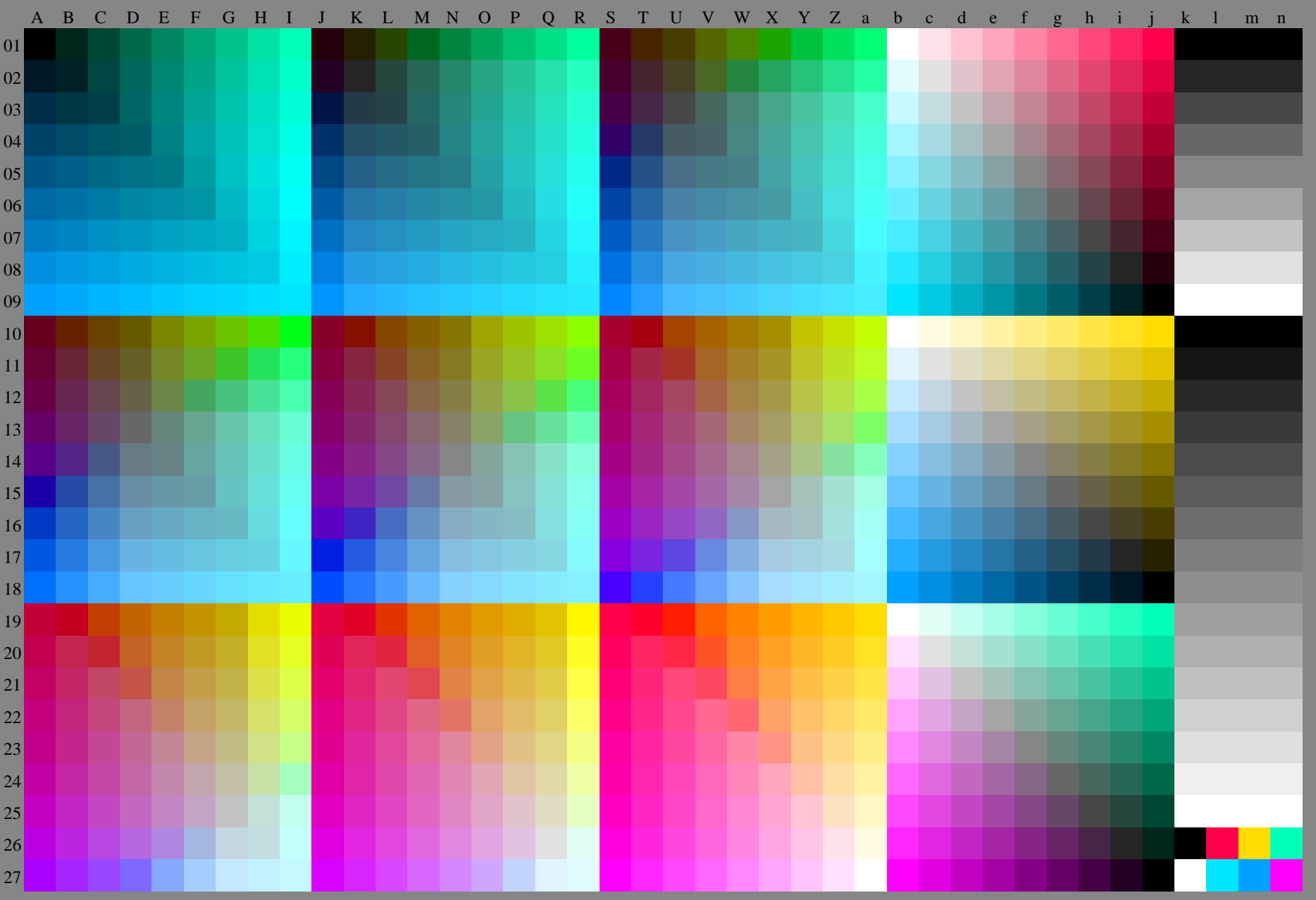
http://130.149.60.45/~farbmetrik/RE50/RE50L0NA.TXT /.PS; transfer output  
N: no 3D-linearization (OL) in file (F) or PS-startup (S), page 2/2



see similar files: <http://130.149.60.45/~farbmetrik/RE50/RE50L0NA.TXT> / .PS  
technical information: <http://www.ps.bam.de> or <http://130.149.60.45/~farbmetrik>

TUB registration: 20130201-RE50/RE50L0NA.TXT /.PS  
application for measurement of display output, no separation

TUB material: code=rh4ta



1-013130-L0 RE500-71 Test chart G with 40x27=1080 colours; digital equidistant 9 or 16 step colour scales; Colour data in column (A-n), 3D = 0

TUB-test chart RE50; 1080 standard colours  
Test chart according to DIN 33872, 3D=0, de=1, sRGB

input: *rgb/cmyk* -> *rgb<sub>e</sub>*  
output: transfer to *rgb<sub>e</sub>*

1-013130-F0 C M Y O L V

