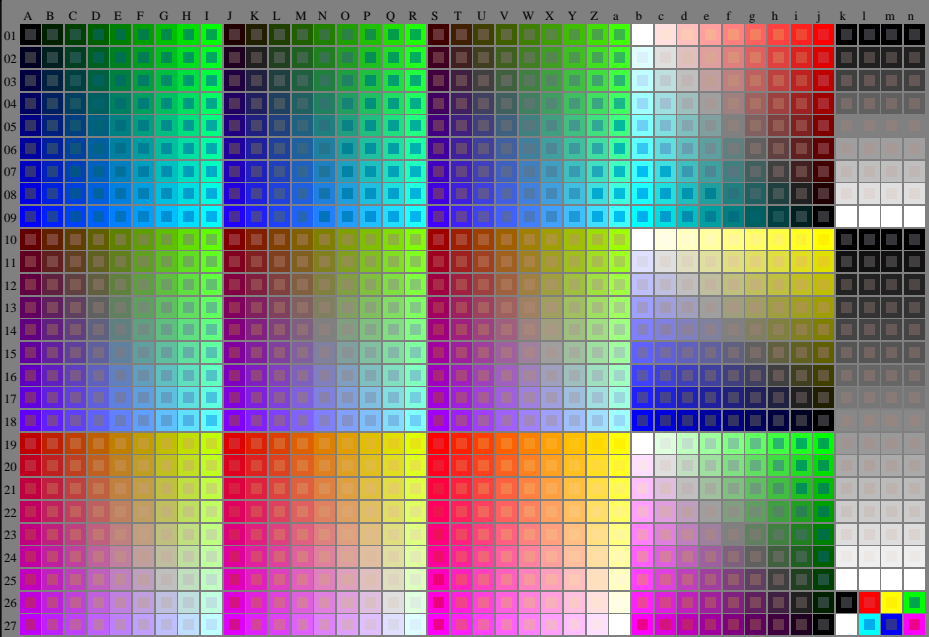


http://130.149.60.45/~farbmetrik/RE57/RE57LONI.TXT /PS; start output  
N: no 3D-linearization (OL) in file (F) or PS-startup (S), page 1/1

see similar files: <http://130.149.60.45/~farbmetrik/RE57/RE57.HTM>  
technical information: <http://www.ps.bam.de> or <http://130.149.60.45/~farbmetrik>



TUB registration: 20150701-RE57/RE57LONI.TXT /PS  
application for measurement of offset print output

TUB material: code=rhata

1-003031-L0 RE570-7N

Test chart G with 40x27=1080 colours; digital equidistant 9 or 16 step colour scales; Colour data in columns (A-n):  $rgb + cmy0$  (A, J + k26\_s27), 000a (k), w (l), mm0 (m), www (n), 3D = 0

TUB-test chart RE57; 1080 standard colours  
Test chart according to DIN 33872, 3D=0, de=0, cmy0

input:  $rgb/cmyk \rightarrow rgb/cmyk$   
output: no change

