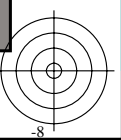
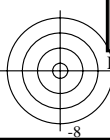
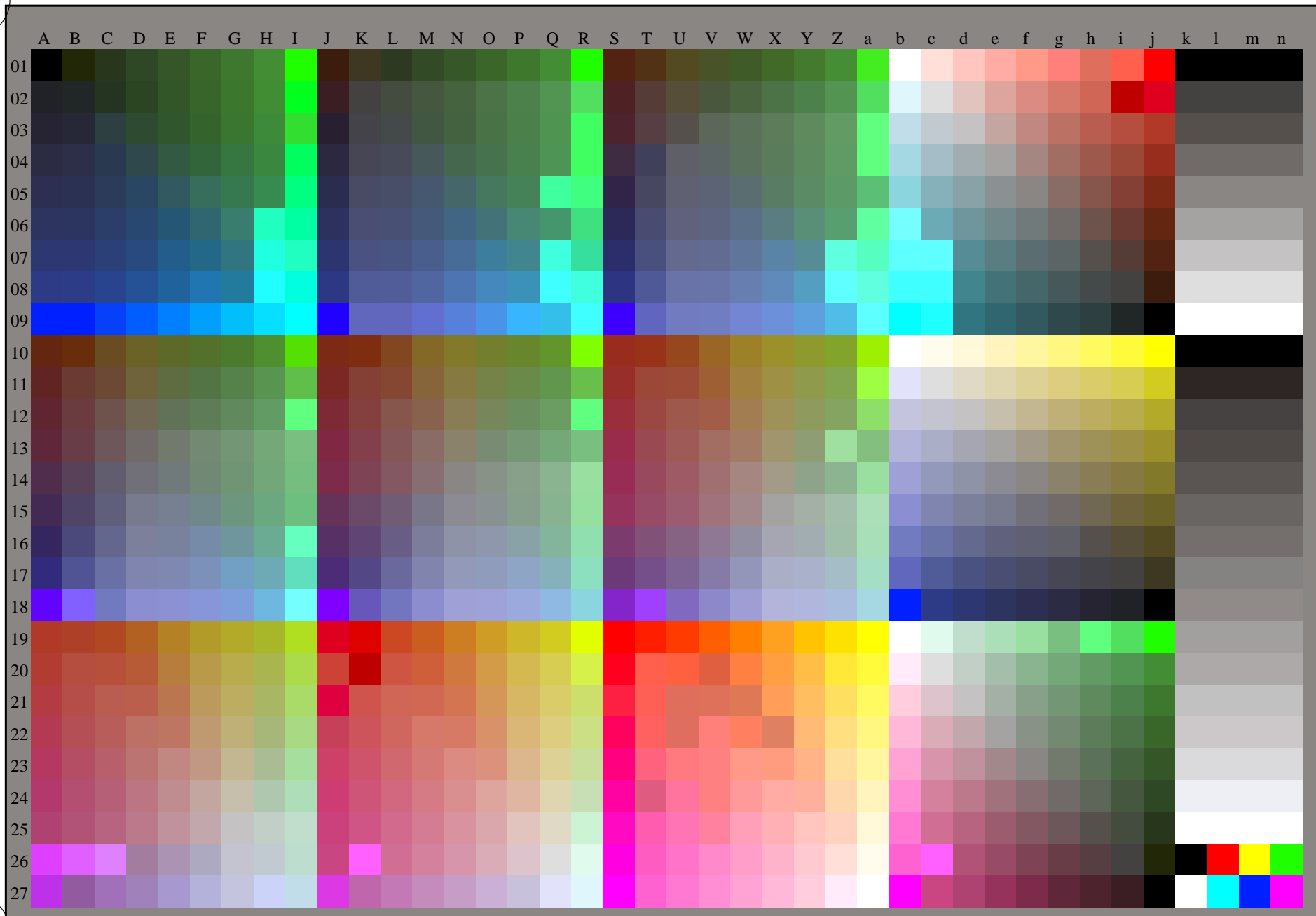


voir fichiers similaires: <http://130.149.60.45/~farbmetrik/RF60/RF60.HTM>
informations techniques: <http://www.ps.bam.de> ou <http://130.149.60.45/~farbmetrik>

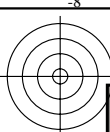
TUB enregistrement: 20150701 -RF60/RF60L0FP.PDF /.PS TUB matériel: code=rh4ta
application pour la mesure des sorties sur imprimante laser, aucune séparation rgb* (RGB)



graphique TUB-RF60; 1080 couleurs standard, cf=1
graphique conforme à DIN 33872, 3D=1, de=0, rgb*

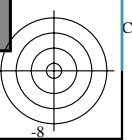
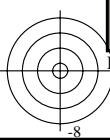
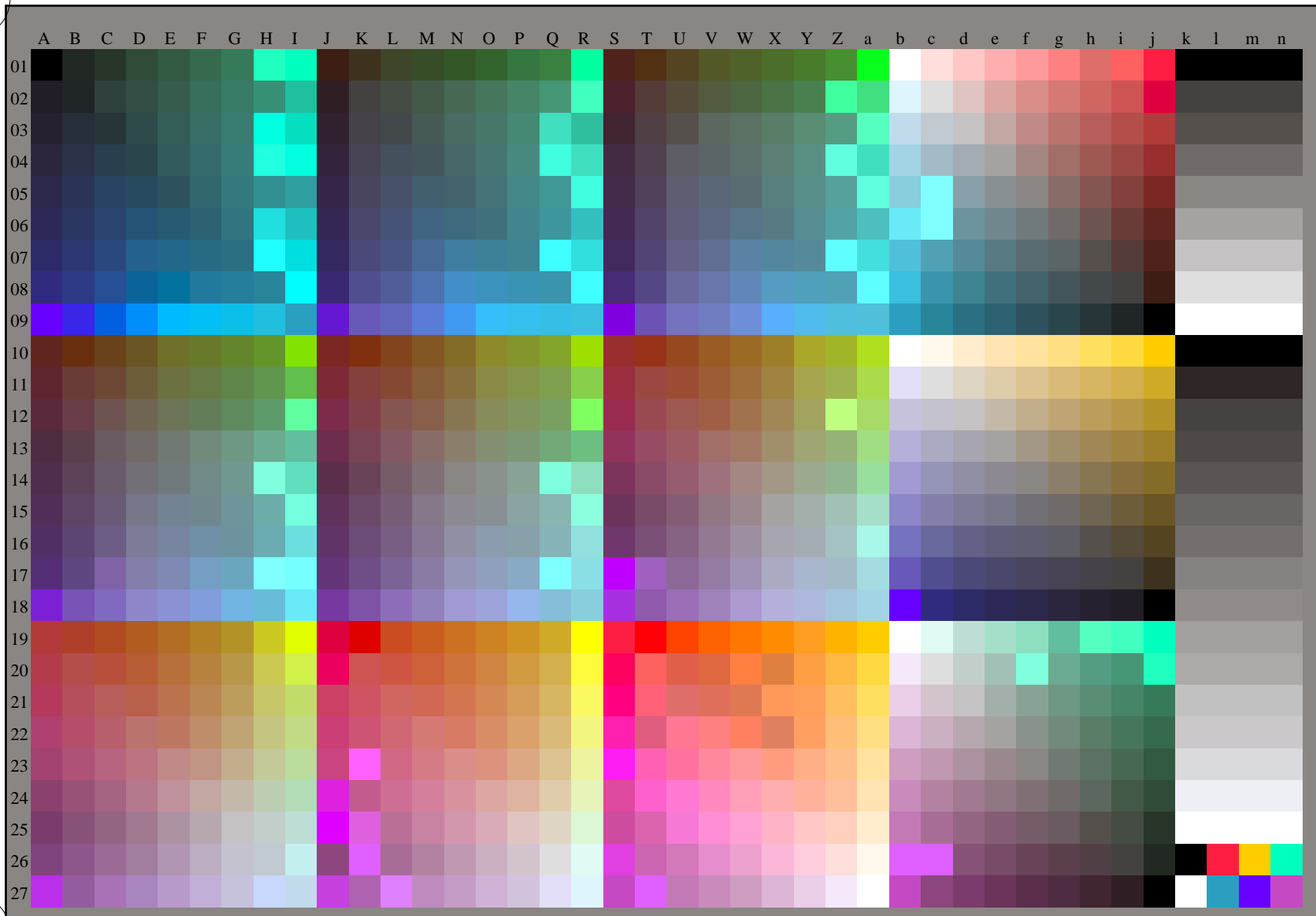
entrée : rgb/cmyk -> rgb_{dd}
sortie : linéarisation 3D selon rgb*_{dd}





voir fichiers similaires: <http://130.149.60.45/~farbmetrik/RF60/RF60.HTM>
informations techniques: <http://www.ps.bam.de> ou <http://130.149.60.45/~farbmetrik>

TUB enregistrement: 20150701 -RF60/RF60L0FP.PDF /.PS TUB matériel: code=rh4ta
application pour la mesure des sorties sur imprimante laser, aucune séparation rgb* (RGB)



graphique TUB-RF60; 1080 couleurs standard, cf=1
graphique conforme à DIN 33872, 3D=1, de=1, rgb*

entrée : rgb/cmyk -> rgb_{de}
sortie : linéarisation 3D selon rgb*_{de}

