

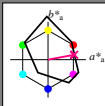
http://130.149.60.45/~farbmetrik/RI49/RI49L0N1.TXT /.PS; cominciare l'uscita  
N: nessun 3D-linearizzazione (OL) nel file (F) o PS-startup (S), pagina 1/1

Immettere y uscita: Printer Reflective System FRS06a for relative CIELAB hue  $h_{ab,a,rel} = h_{ab}/360 = 10/360 = 0.02$

$H^*_e = B75R$

Dati del dispositivo (d) o colori elementari (e):

$HIC^*_e$   
codice di tonalità per i colori  
questa pagina:  
 $H^*_e = B75R$   
triangolo chiarezza  $T^*$



**FRS06a; dati atti CIELAB (a)**

name	$L^* = L^*_a$	$a^*_a$	$b^*_a$	$C^*_{ab,a}$	$h^*_{ab,a}$
R_Ma	32.5	62.3	46.4	77.7	36
Y_Ma	82.7	-3.1	113.9	114.0	91
G_Ma	39.4	-61.8	45.8	76.9	143
C_Ma	47.8	-26.8	-34.2	43.4	231
B_Ma	10.1	55.1	-61.0	82.2	312
M_Ma	34.5	80.6	-33.9	87.5	337
N_Ma	6.2	0.0	0.0	0.0	0
W_Ma	91.9	0.0	0.0	0.0	0
R_CIE	39.9	58.7	27.9	65.0	25
Y_CIE	81.2	-2.8	71.5	71.6	92
G_CIE	52.2	-42.4	13.6	44.5	162
B_CIE	30.5	1.4	-46.4	46.4	271

Il dati per il massimo colore (Ma):

LabCh\*<sub>-Ma</sub>: 48 69 12 70 10

$HIC^*_{-Ma}$ : B75R\_100\_100\_

$rgbic^*_{-Ma}$ :

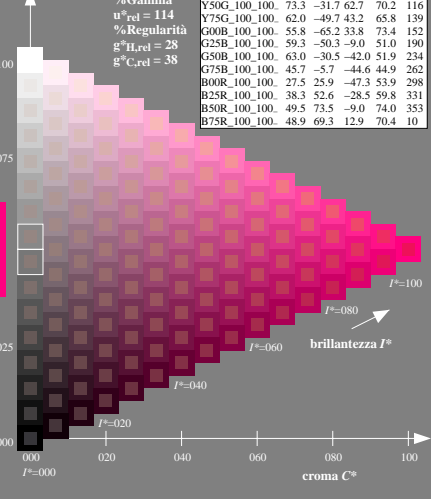
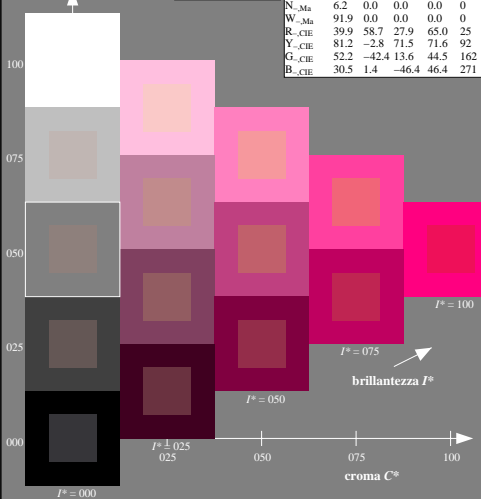
1.0 0.0 0.5 1.0 1.0

triangolo chiarezza  $T^*$

**ORS20a; dati atti CIELAB (a)**

$H^*_e$	$L^* = L^*_a$	$a^*_a$	$b^*_a$	$C^*_{ab,a}$	$h^*_{ab,a}$
R00Y_100_100_	48.4	66.1	40.2	77.3	31
R25Y_100_100_	56.8	48.0	50.5	69.6	46
R50Y_100_100_	68.6	25.0	63.9	68.6	68
R75Y_100_100_	80.6	4.8	77.2	77.3	86
Y00G_100_100_	90.2	-9.6	88.2	88.7	96
Y25G_100_100_	83.2	-18.4	79.9	81.9	102
Y50G_100_100_	73.3	-31.7	62.7	70.2	116
Y75G_100_100_	62.0	-49.7	43.2	65.8	139
G00B_100_100_	55.8	-65.2	33.8	73.4	152
G25B_100_100_	59.3	-50.3	-9.0	51.0	190
G50B_100_100_	63.0	-30.5	-42.0	51.9	234
G75B_100_100_	45.7	-5.7	-44.6	44.9	262
B00R_100_100_	27.5	25.9	-47.3	53.9	298
B25R_100_100_	38.3	52.6	-28.5	59.8	331
B50R_100_100_	49.5	73.5	-9.0	74.0	353
B75R_100_100_	48.9	69.3	12.9	70.4	10

%Gamma  
 $u^*_{rel} = 114$   
%Regularità  
 $g^*_{H,rel} = 28$   
 $g^*_{C,rel} = 38$



vedere dei file simili: <http://130.149.60.45/~farbmetrik/RI49/RI49L0N1.TXT>  
informazioni tecniche: <http://www.ps.bam.de> o <http://130.149.60.45/~farbmetrik>

TUB iscrizione: 20130201-RI49/RI49L0N1.TXT /.PS  
la domanda per la misura di uscita della stampante laser

TUB materiale: code=rh4da

4-003030-L0 RI490-7N

grafico TUB-RI49; codice di tinte:  $H^*_e = B75R$   
grafico conformemente a DIN 33872, 3D=0, de=0, cmyk

immettere:  $rgb/cmyk \rightarrow rgb/cmyk$   
uscita: nessun cambiamento

4-003030-L0 RI490-7N