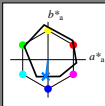


http://130.149.60.45/~farbmetrik/RN08/RN08L0N1.TXT /PS; start output
N: ingen 3D-linearisering (OL) i fil (F) eller PS-startup (S), side 1/1

Input og output: Offset-Reflektiv-System ORS18a for relativ CIELAB fargetone $h_{ab,a,rel} = h_{ab}/360 = 262/360 = 0.72$

$H^*_- = G75B_-$

Data for ethvert apparat (d) eller elementærfarge (e):



ORS18a; adapterte (a) CIELAB data

navn	$L^*=L^*_a$	a^*_a	b^*_a	$C^*_{ab,a}$	$h^*_{ab,a}$
R_.,Ma	47.9	65.3	50.5	82.6	37
Y_.,Ma	90.3	-10.2	91.7	92.3	96
G_.,Ma	50.9	-62.8	34.9	71.9	150
C_.,Ma	58.6	-30.3	-45.0	54.2	236
B_.,Ma	25.7	31.0	-44.4	54.2	305
M_.,Ma	48.1	75.2	-8.3	75.7	353
N_.,Ma	18.0	0.0	0.0	0.0	0
W_.,Ma	95.4	0.0	0.0	0.0	0
R_.,CIE	39.9	58.7	27.9	65.0	25
Y_.,CIE	81.2	-2.8	71.5	71.6	92
G_.,CIE	52.2	-42.4	13.6	44.5	162
B_.,CIE	30.5	1.4	-46.4	46.4	271

Data for maksimalfarge (Ma):

LabCh*_.,Ma: 45 -5 -44 44 262

HIC*_.,Ma: G75B_100_100_

rgbic*_.,Ma:

0.0 0.5 1.0 1.0 1.0

trekantslyshet T^*

ORS20a; adapterte (a) CIELAB data

H^*_-	$L^*=L^*_a$	a^*_a	b^*_a	$C^*_{ab,a}$	$h^*_{ab,a}$
R00Y_100_100_	48.4	66.1	40.2	77.3	31
R25Y_100_100_	56.8	48.0	50.5	69.6	46
R50Y_100_100_	68.6	25.0	63.9	68.6	68
R75Y_100_100_	80.6	4.8	77.2	77.3	86
Y00G_100_100_	90.2	-9.6	88.2	88.7	96
Y25G_100_100_	83.2	-18.4	79.9	81.9	102
Y50G_100_100_	73.3	-31.7	62.7	70.2	116
Y75G_100_100_	62.0	-49.7	43.2	65.8	139
G00B_100_100_	55.8	-65.2	33.8	73.4	152
G25B_100_100_	59.3	-50.3	-9.0	51.0	190
G50B_100_100_	63.0	-30.5	-42.0	51.9	234
G75B_100_100_	45.7	-5.7	-44.6	44.9	262
B00R_100_100_	27.5	25.9	-47.3	53.9	298
B25R_100_100_	38.3	52.6	-28.5	59.8	331
B50R_100_100_	49.5	73.5	-9.0	74.0	353
B75R_100_100_	48.9	69.3	12.9	70.4	10

%Omfang

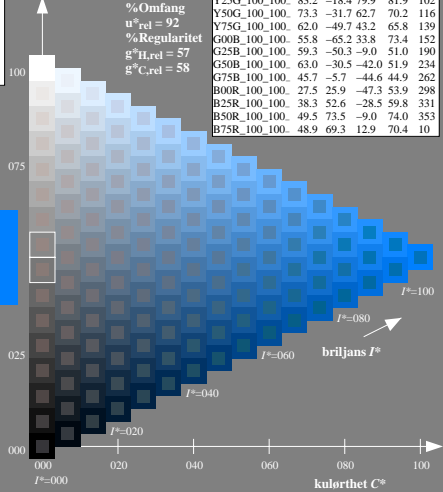
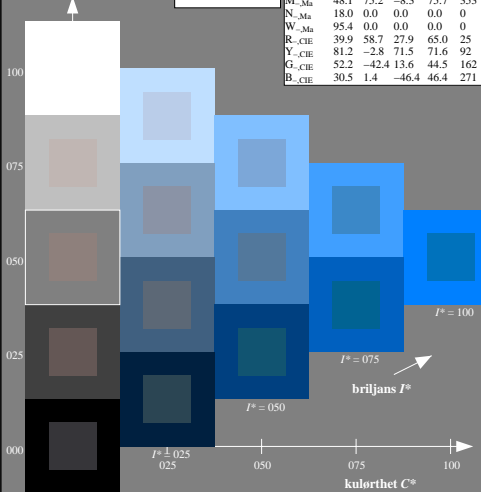
$u^*_{rel} = 92$

%Regularitet

$g^*_{H,rel} = 57$

$g^*_{C,rel} = 58$

HIC*_.,Ma: G75B_ fargetonetekst for fargene på denne siden: $H^*_- = G75B_-$ trekantslyshet T^*



5-003031-L0 RN080-7N

TUB-prøveplansje RN08; farbetoneplan: $H^*_- = G75B_-$ prøveplansje infølge DIN 33872, 3D=0, de=0, cmy0

input: rgb/cmyk -> rgb/cmyk
output: ingen endring

TUB registrering: 2015/07/01-RN08/RN08L0N1.TXT /PS
anvendelse for måling av offsettrykk output

TUB-material: code=matata