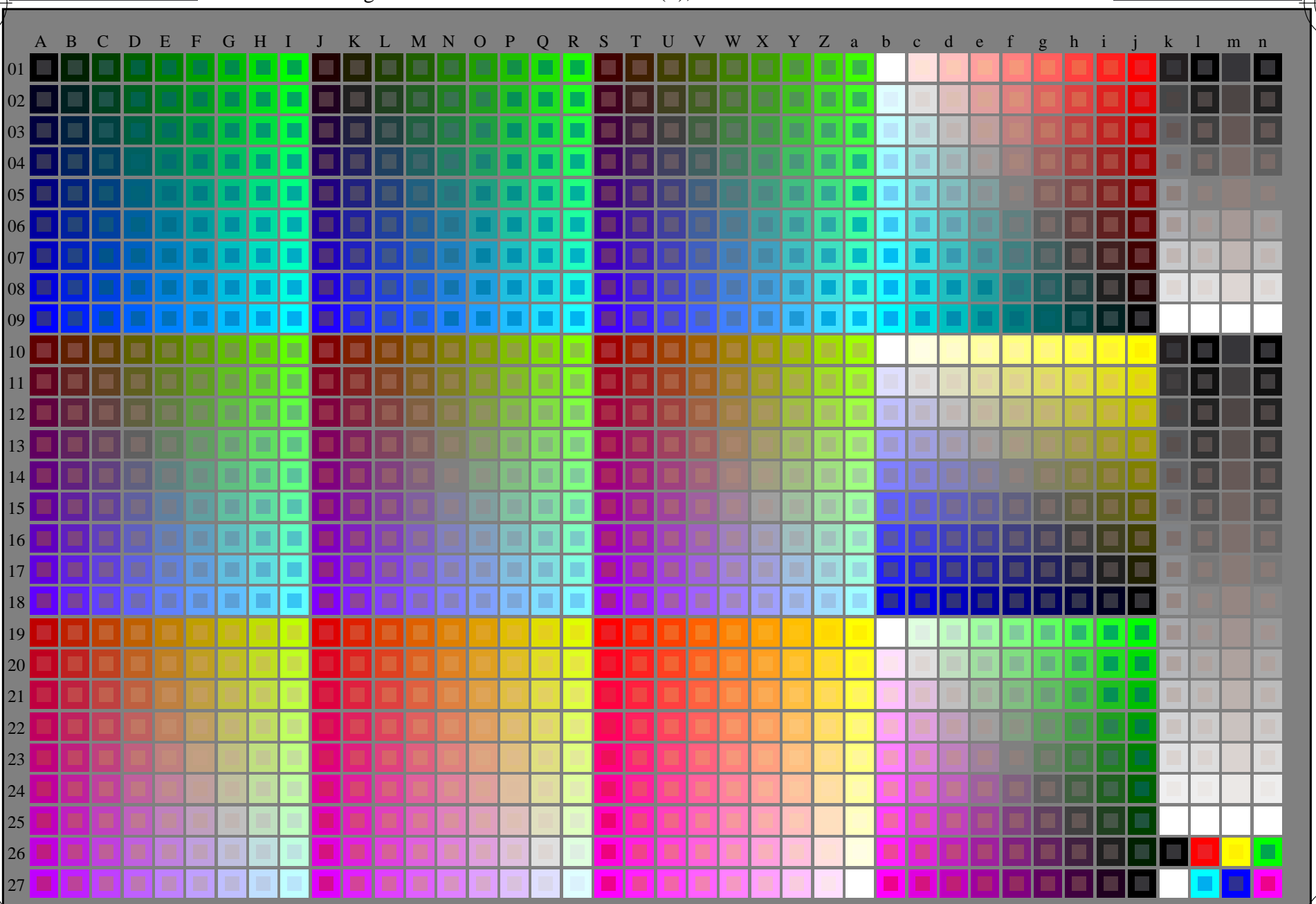


se lignende filer: <http://130.149.60.45/~farbmetrik/RN62/RN62.HTM>  
teknisk informasjon: <http://www.ps.bam.de> eller <http://130.149.60.45/~farbmetrik>



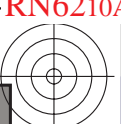
TUB registrering: 20150701-RN62/RN62L0FA.TXT /.PS  
anvendelse for måling av laserprinter output  
TUB-material: code=rh4ta

RN620-7N\_RGB 5-103030-L0

rgb (A\_j + k26\_n27), 000n (k), w (l), nnn0 (m), www (n), 3D = 1

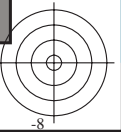
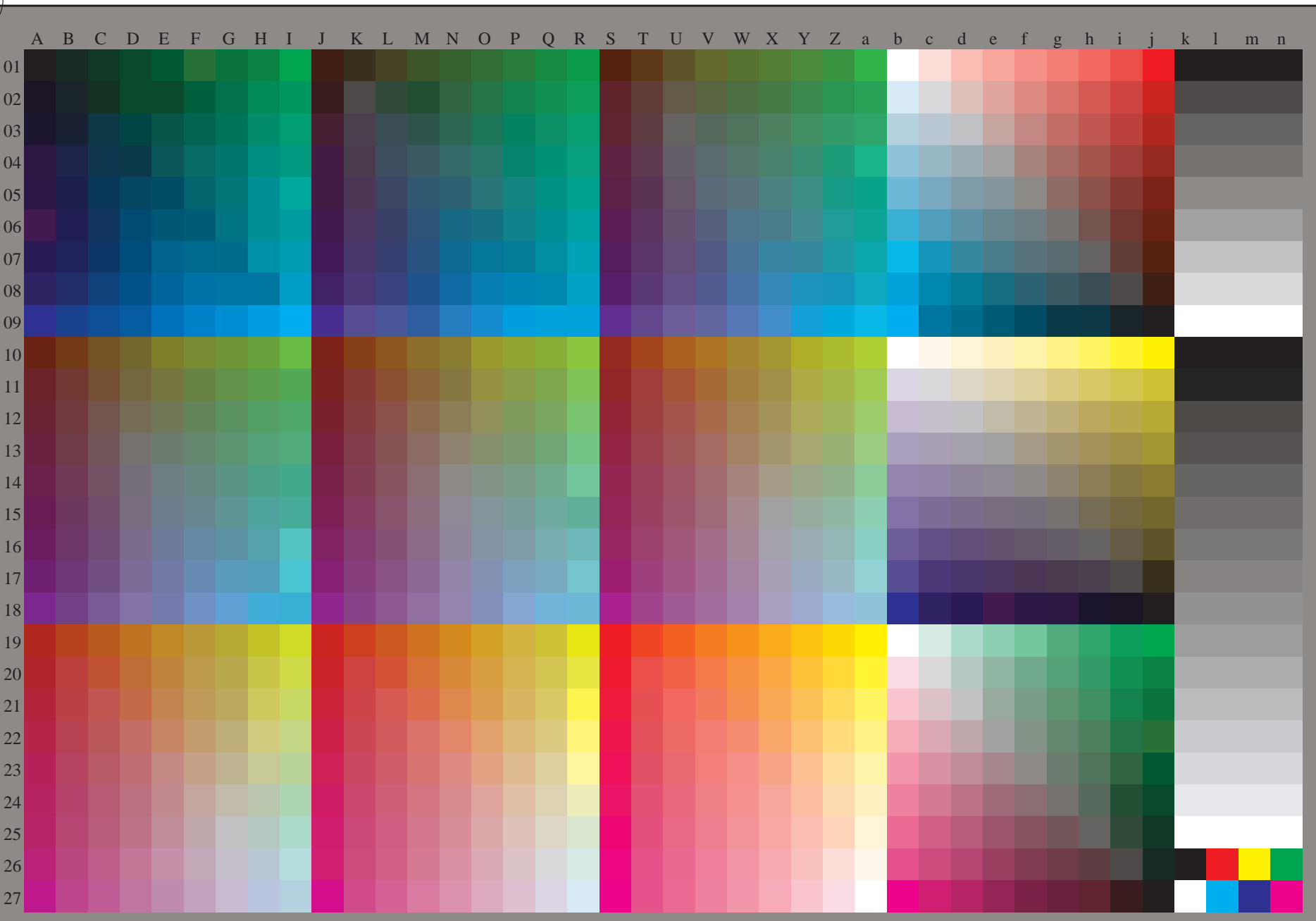
TUB-prøveplansje RN62; 1080 standard farger, cf=1  
prøveplansje infølge DIN 33872

input: rgb/cmyk -> rgb/cmyk  
output: ingen endring



se lignende filer: <http://130.149.60.45/~farbmetrik/RN62/RN62L0FA.TXT> / .PS  
teknisk informasjon: <http://www.ps.bam.de> eller <http://130.149.60.45/~farbmetrik>

TUB registrering: 20150701-RN62/RN62L0FA.TXT /.PS  
anvendelse for måling av laserprinter output, separasjon cmyk\* (CMYK)  
TUB-material: code=rh4ta



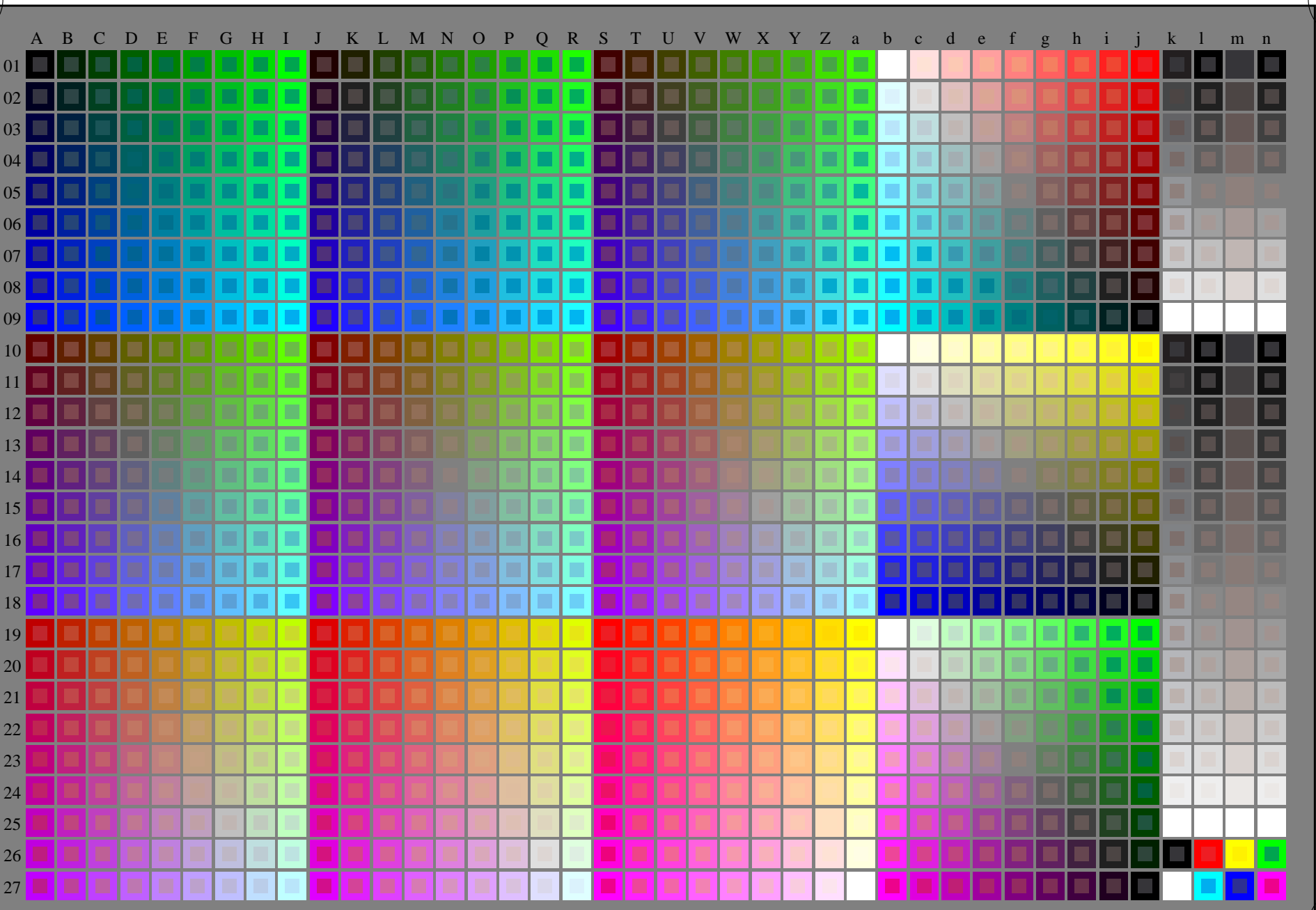
TUB-prøveplansje RN62; 1080 standard farger, cf=1  
prøveplansje infølge DIN 33872, 3D=1, de=0, cmyk\*

input: *rgb/cmyk* -> *rgb<sub>dd</sub>*  
output: 3D-linearisering til *cmyk\*<sub>dd</sub>*



http://130.149.60.45/~farbmetrik/RN62/RN62L0FA.TXT /.PS; start output  
F: 3D-linearisering RN62/RN62LJ30FA.DAT i fil (F), side 1/2

se lignende filer: <http://130.149.60.45/~farbmetrik/RN62/RN62.HTM>  
teknisk informasjon: <http://www.ps.bam.de> eller <http://130.149.60.45/~farbmetrik>



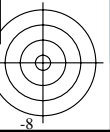
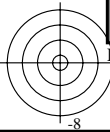
TUB registrering: 20150701-RN62/RN62L0FA.TXT /.PS  
anvendelse for måling av laserprinter output  
TUB-material: code=rh4ta

RN620-7N\_RGB 5-113030-L0

rgb (A\_j + k26\_n27), 000n (k), w (l), nnn0 (m), www (n), 3D = 1

TUB-prøveplansje RN62; 1080 standard farger, cf=1  
prøveplansje infølge DIN 33872

input: *rgb/cmyk* -> *rgb/cmyk*  
output: ingen endring

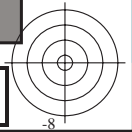
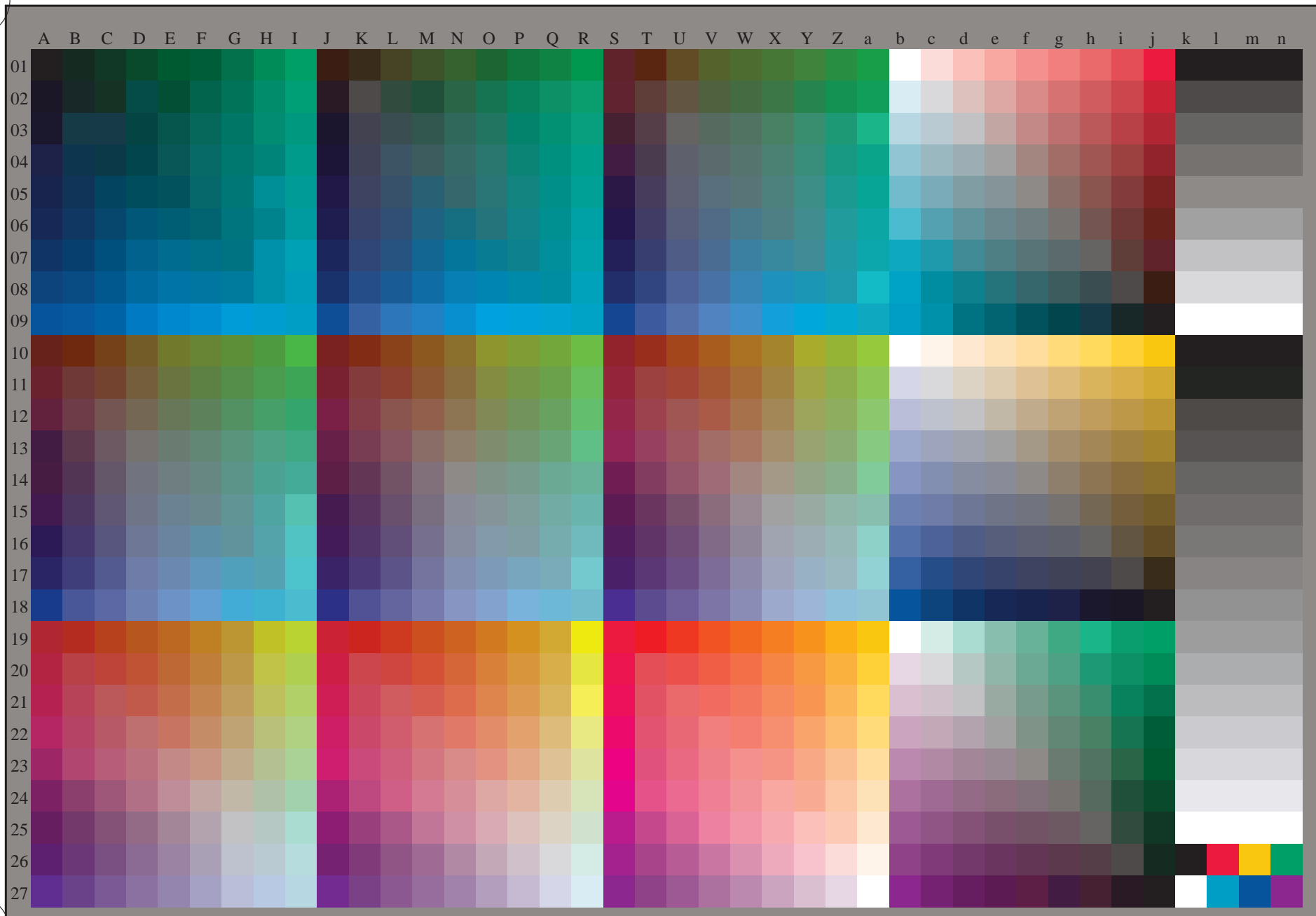


http://130.149.60.45/~farbmetrik/RN62/RN62L0FA.TXT /.PS; 3D-linearisering  
F: 3D-linearisering RN62/RN62LJ30FA.DAT i fil (F), side 2/2



se lignende filer: <http://130.149.60.45/~farbmetrik/RN62/RN62.HTM>  
teknisk informasjon: <http://www.ps.bam.de> eller <http://130.149.60.45/~farbmetrik>

TUB registrering: 20150701-RN62/RN62L0FA.TXT /.PS  
anvendelse for måling av laserprinter output, separasjon cmykn6\* (CMYK)  
TUB-material: code=rh4ta



TUB-prøveplansje RN62; 1080 standard farger, cf=1  
prøveplansje infølge DIN 33872, 3D=1, de=1, cmyk\*

input: *rgb/cmyk* -> *rgb<sub>de</sub>*  
output: 3D-linearisering til *cmyk\*<sub>de</sub>*

