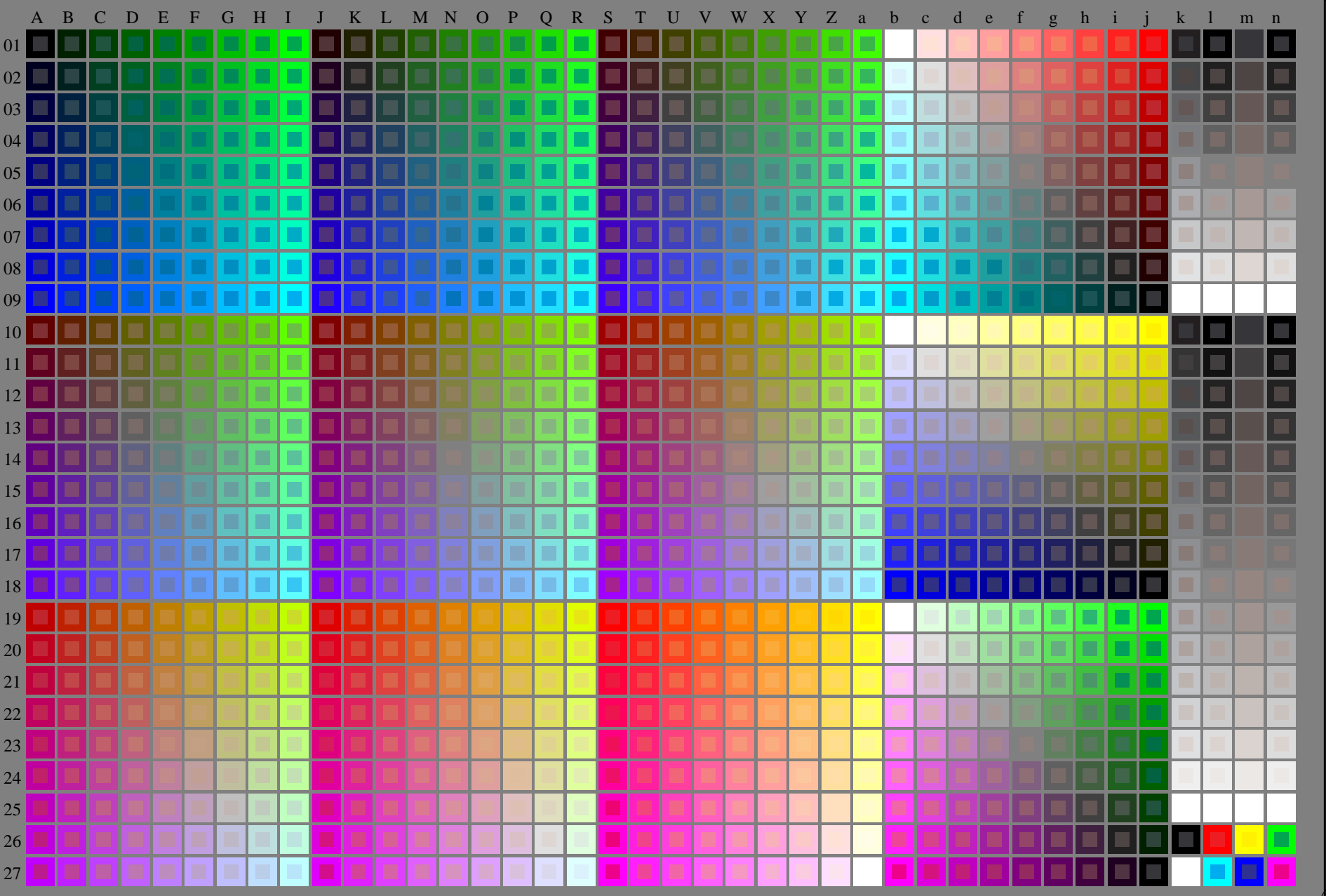


se lignende filer: <http://130.149.60.45/~farbmetrik/RN62/RN62.HTM>  
teknisk informasjon: <http://www.ps.bam.de> eller <http://130.149.60.45/~farbmetrik>

TUB registrering: 20150701-RN62/RN62L0FP.PDF /.PS  
anvendelse for måling av laserprinter output  
TUB-material: code=rh4ta

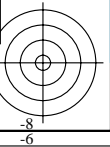
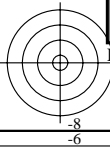


RN620-7N\_RGB 5-103030-L0

rgb (A\_j + k26\_n27), 000n (k), w (l), nnn0 (m), www (n), 3D = 1

TUB-prøveplansje RN62; 1080 standard farger, cf=1  
prøveplansje infølge DIN 33872

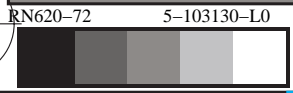
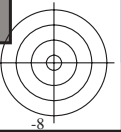
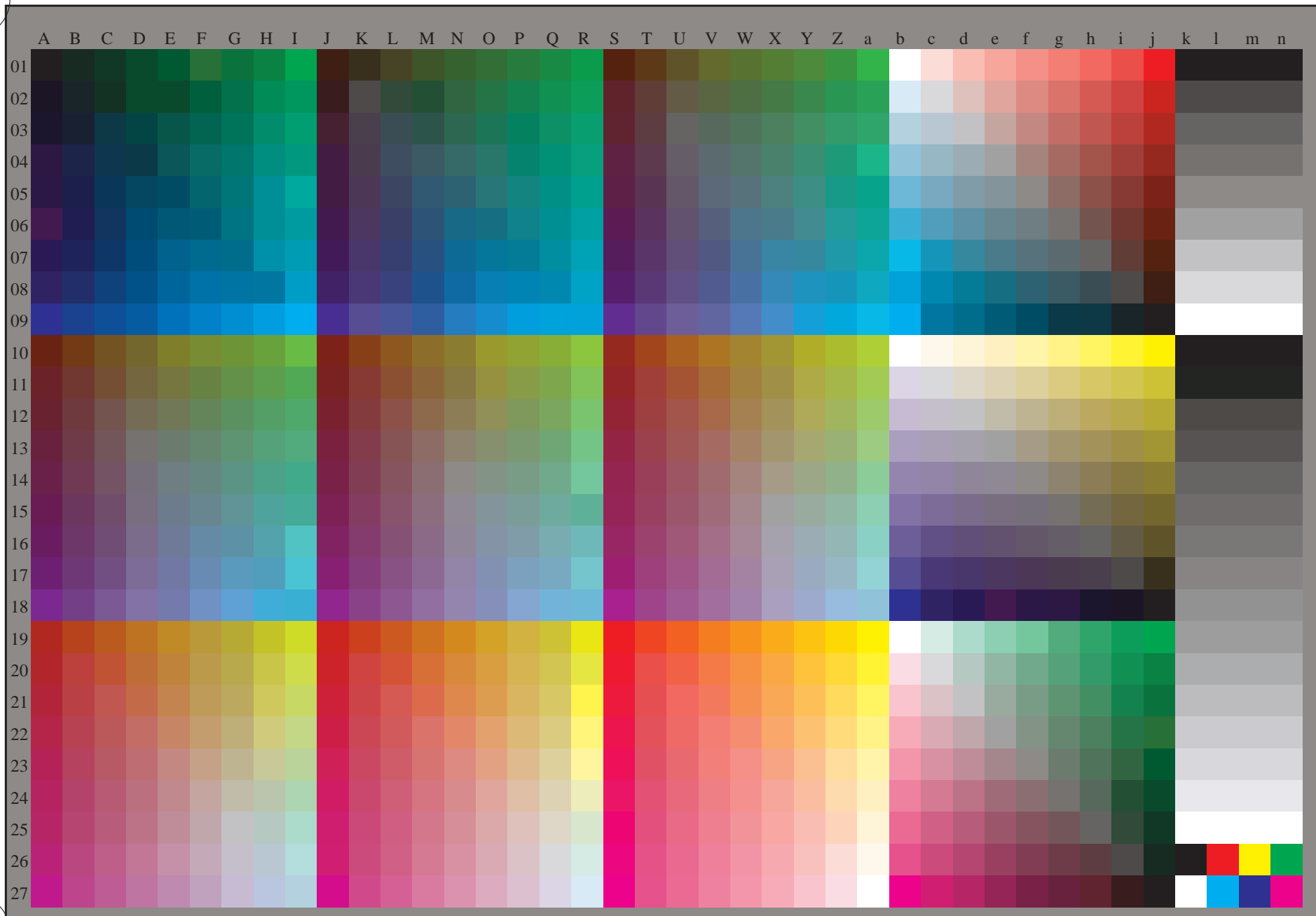
input: *rgb/cmyk* -> *rgb/cmyk*  
output: ingen endring





se lignende filer: <http://130.149.60.45/~farbmetrik/RN62/RN62.HTM>  
teknisk informasjon: <http://www.ps.bam.de> eller <http://130.149.60.45/~farbmetrik>

TUB registrering: 20150701-RN62/RN62L0FP.PDF /.PS  
anvendelse for måling av laserprinter output, separasjon cmyk\* (CMYK)  
TUB-material: code=rh4ta



TUB-prøveplansje RN62; 1080 standard farger, cf=1  
prøveplansje infølge DIN 33872, 3D=1, de=0, cmyk\*

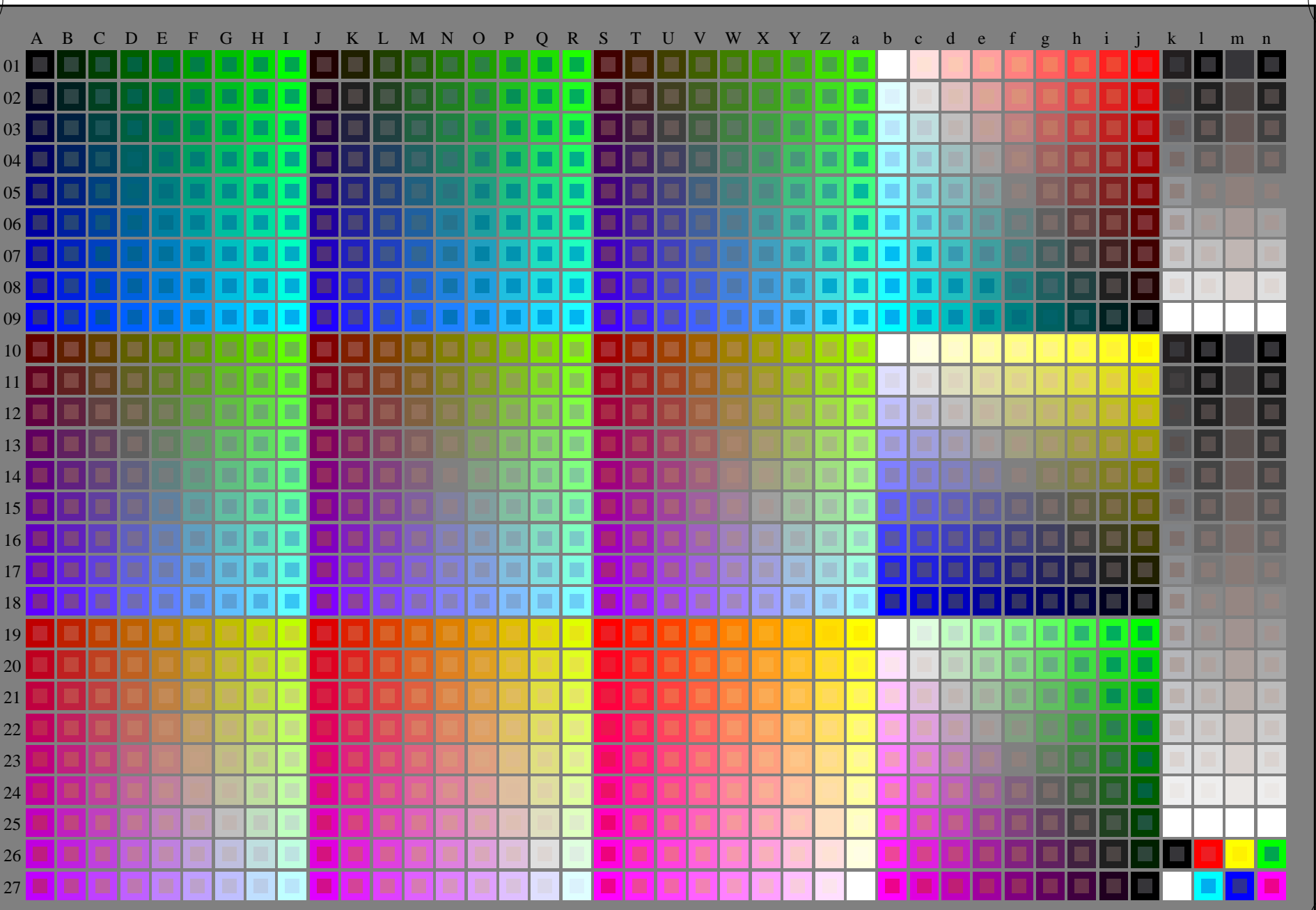
input: *rgb/cmyk* -> *rgb<sub>dd</sub>*  
output: 3D-linearisering til *cmyk\*<sub>dd</sub>*



http://130.149.60.45/~farbmetrik/RN62/RN62L0FP.PDF /.PS; start output  
F: 3D-linearisering RN62/RN62LJ30FP.DAT i fil (F), side 1/2

se lignende filer: <http://130.149.60.45/~farbmetrik/RN62/RN62.HTM>  
teknisk informasjon: <http://www.ps.bam.de> eller <http://130.149.60.45/~farbmetrik>

TUB registrering: 20150701-RN62/RN62L0FP.PDF /.PS  
anvendelse for måling av laserprinter output  
TUB-material: code=rh4ta

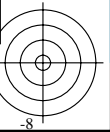
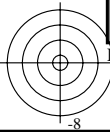


RN620-7N\_RGB 5-113030-L0

rgb (A\_j + k26\_n27), 000n (k), w (l), nnn0 (m), www (n), 3D = 1

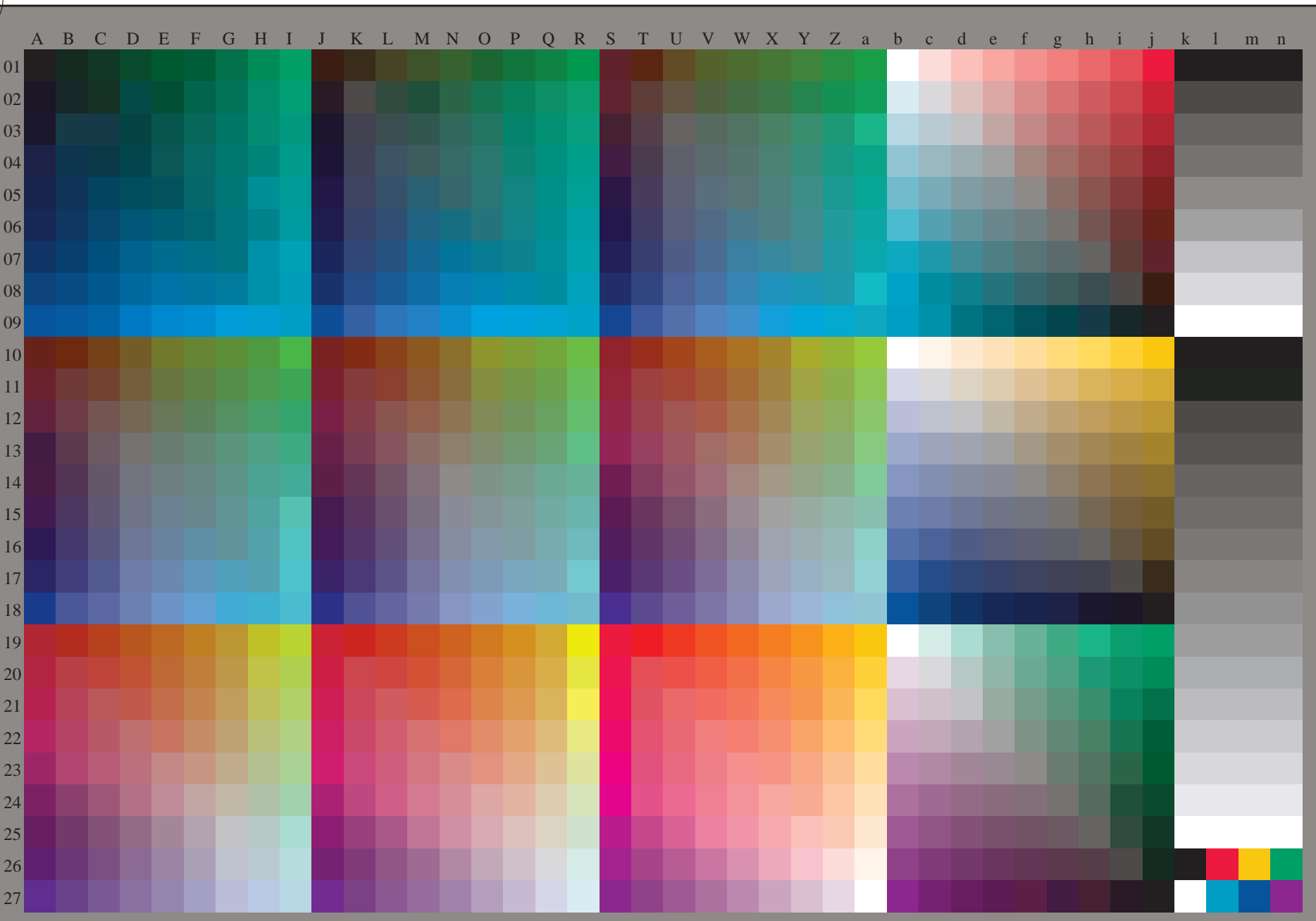
TUB-prøveplansje RN62; 1080 standard farger, cf=1  
prøveplansje infølge DIN 33872

input: *rgb/cmyk* -> *rgb/cmyk*  
output: ingen endring



se lignende filer: <http://130.149.60.45/~farbmetrik/RN62/RN62.HTM>  
teknisk informasjon: <http://www.ps.bam.de> eller <http://130.149.60.45/~farbmetrik>

TUB registrering: 20150701-RN62/RN62L0FP.PDF /.PS  
anvendelse for måling av laserprinter output, separasjon cmykn6\* (CMYK)  
TUB-material: code=rh4ta



TUB-prøveplansje RN62; 1080 standard farger,  $cf=1$   
prøveplansje infølge DIN 33872, 3D=1,  $de=1$ ,  $cmyk^*$

input:  $rgb/cmyk \rightarrow rgb_{de}$   
output: 3D-linearisering til  $cmyk^*_{de}$

