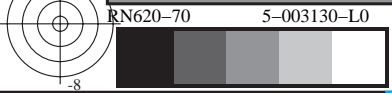
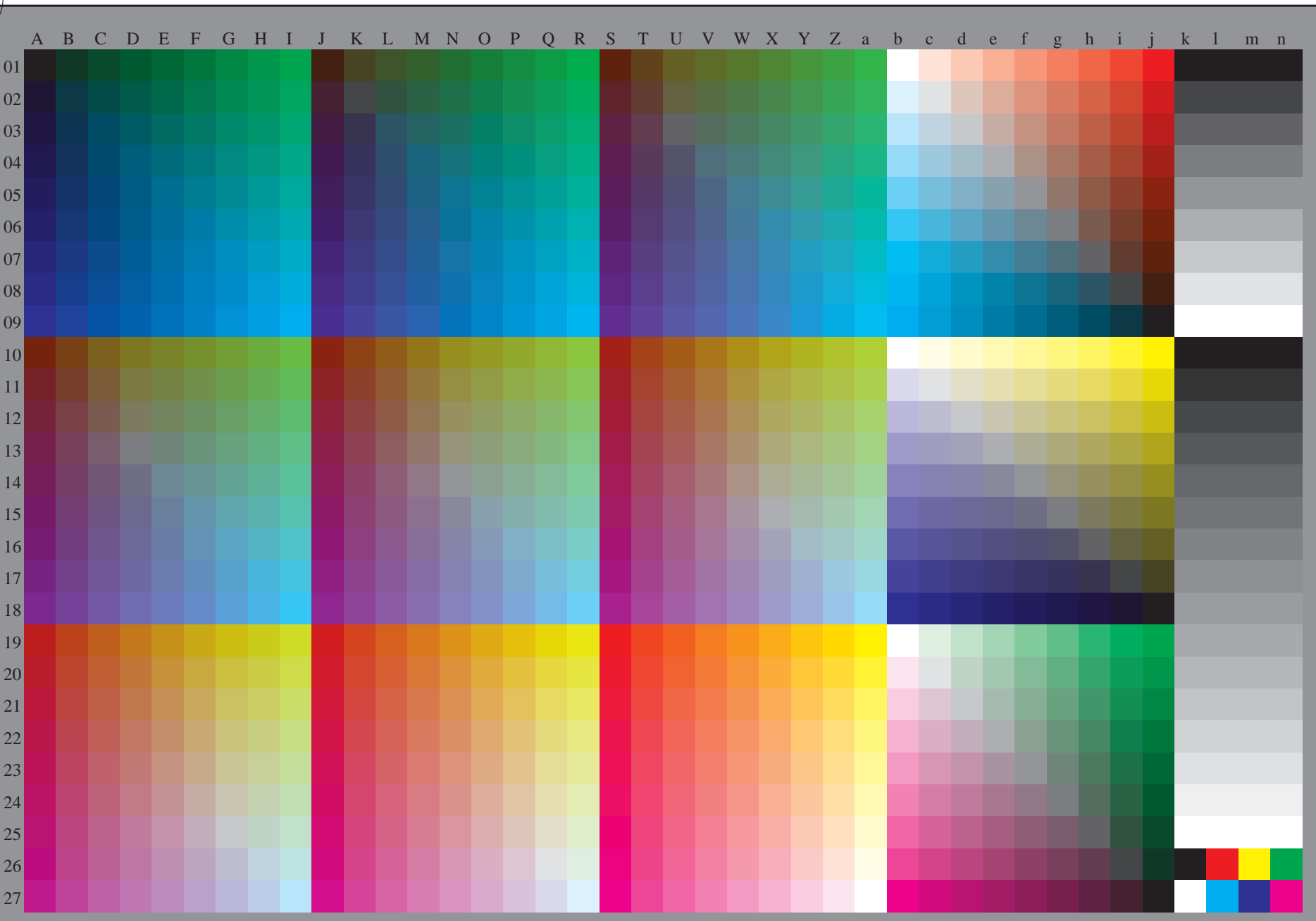


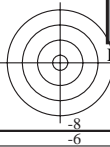
se lignende filer: <http://130.149.60.45/~farbmetrik/RN62/RN62.HTM>
teknisk informasjon: <http://www.ps.bam.de> eller <http://130.149.60.45/~farbmetrik>

TUB registrering: 20150701-RN62/RN62L0NA.TXT /.PS
anvendelse for måling av laserprinter output, separasjon cmykn6 (CMYK) TUB-material: code=rh4ta

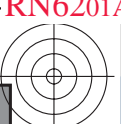


TUB-prøveplansje RN62; 1080 standard farger, $cf=1$
prøveplansje infølge DIN 33872, 3D=0, $de=0$, cmyk

input: $rgb/cmyk \rightarrow rgb_d$
output: overføring til $cmyk_d$

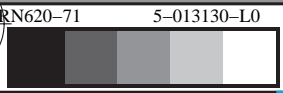
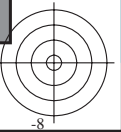
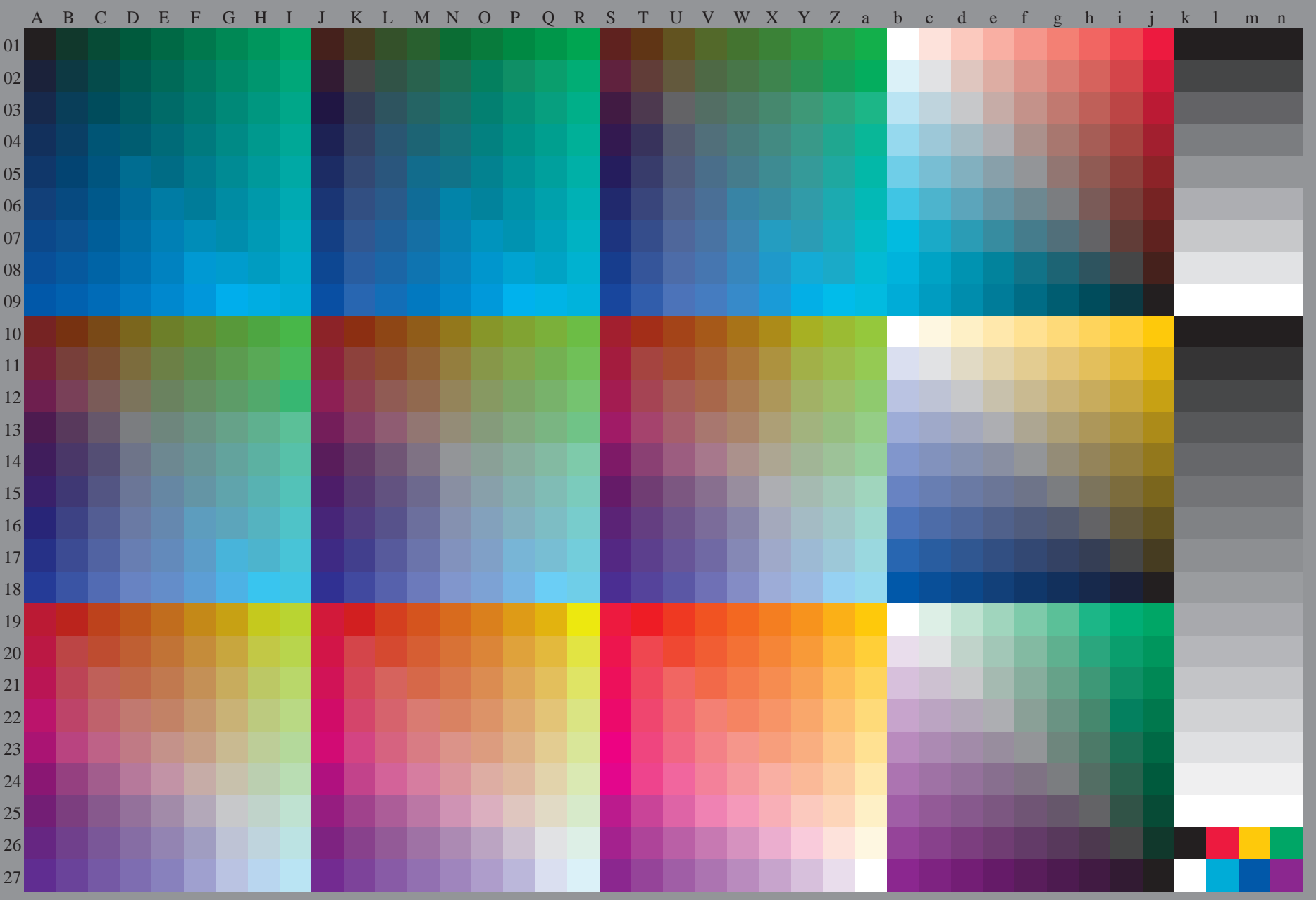


http://130.149.60.45/~farbmetrik/RN62/RN62L0NA.TXT /.PS; overføring output
N: ingen 3D-linearisering (OL) i fil (F) eller PS-startup (S), side 2/2



se lignende filer: <http://130.149.60.45/~farbmetrik/RN62/RN62.HTM>
teknisk informasjon: <http://www.ps.bam.de> eller <http://130.149.60.45/~farbmetrik>

TUB registrering: 20150701-RN62/RN62L0NA.TXT /.PS TUB-material: code=rh4ta
anvendelse for måling av laserprinter output, separasjon cmykn6 (CMYK)



TUB-prøveplansje RN62; 1080 standard farger, cf=1
prøveplansje infølge DIN 33872, 3D=0, de=1, cmyk

input: *rgb/cmyk* -> *rgbe*
output: overføring til *cmyke*