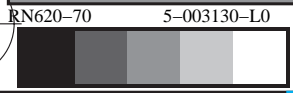
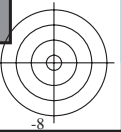
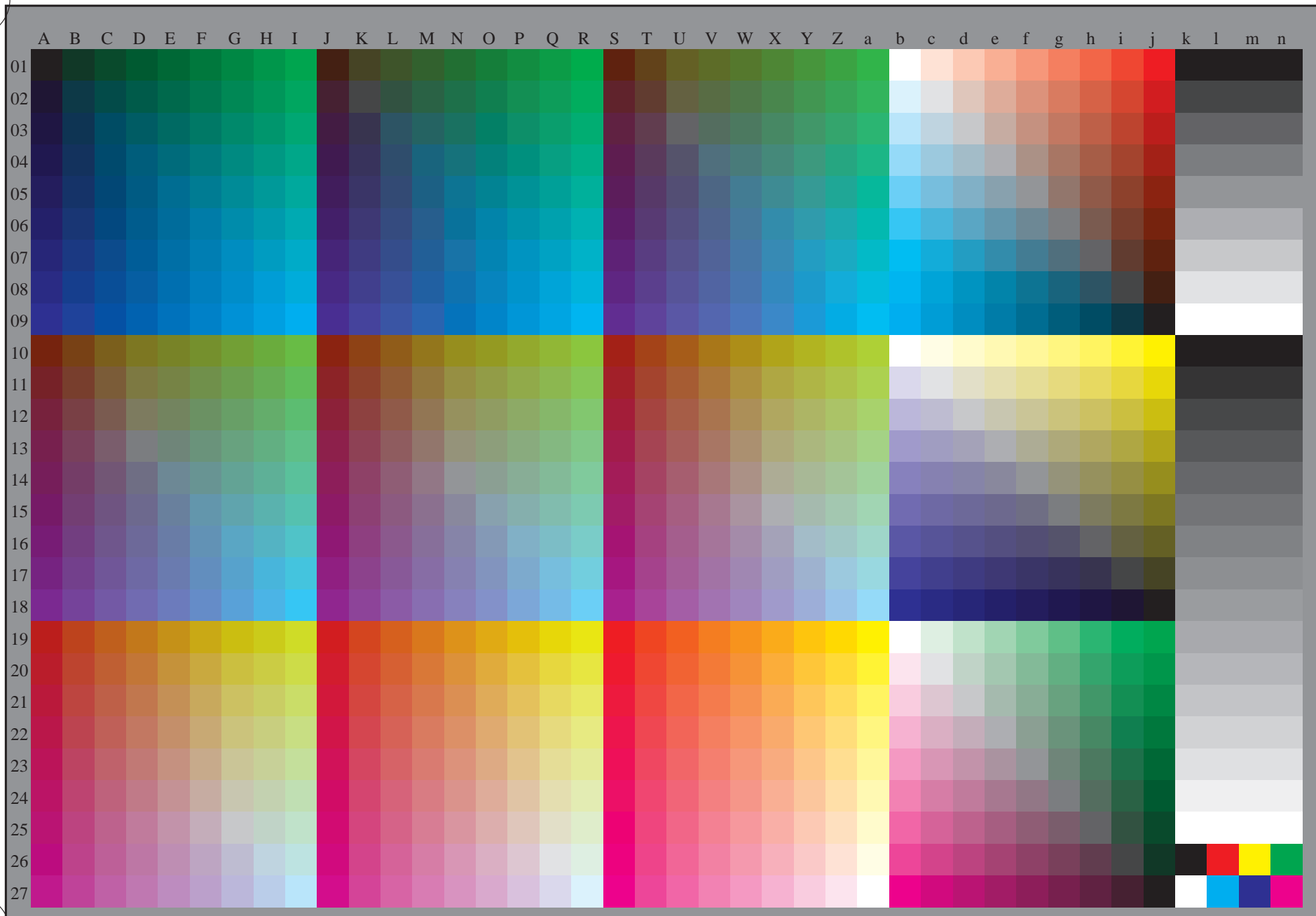


se lignende filer: <http://130.149.60.45/~farbmetrik/RN62/RN62.HTM>  
teknisk informasjon: <http://www.ps.bam.de> eller <http://130.149.60.45/~farbmetrik>

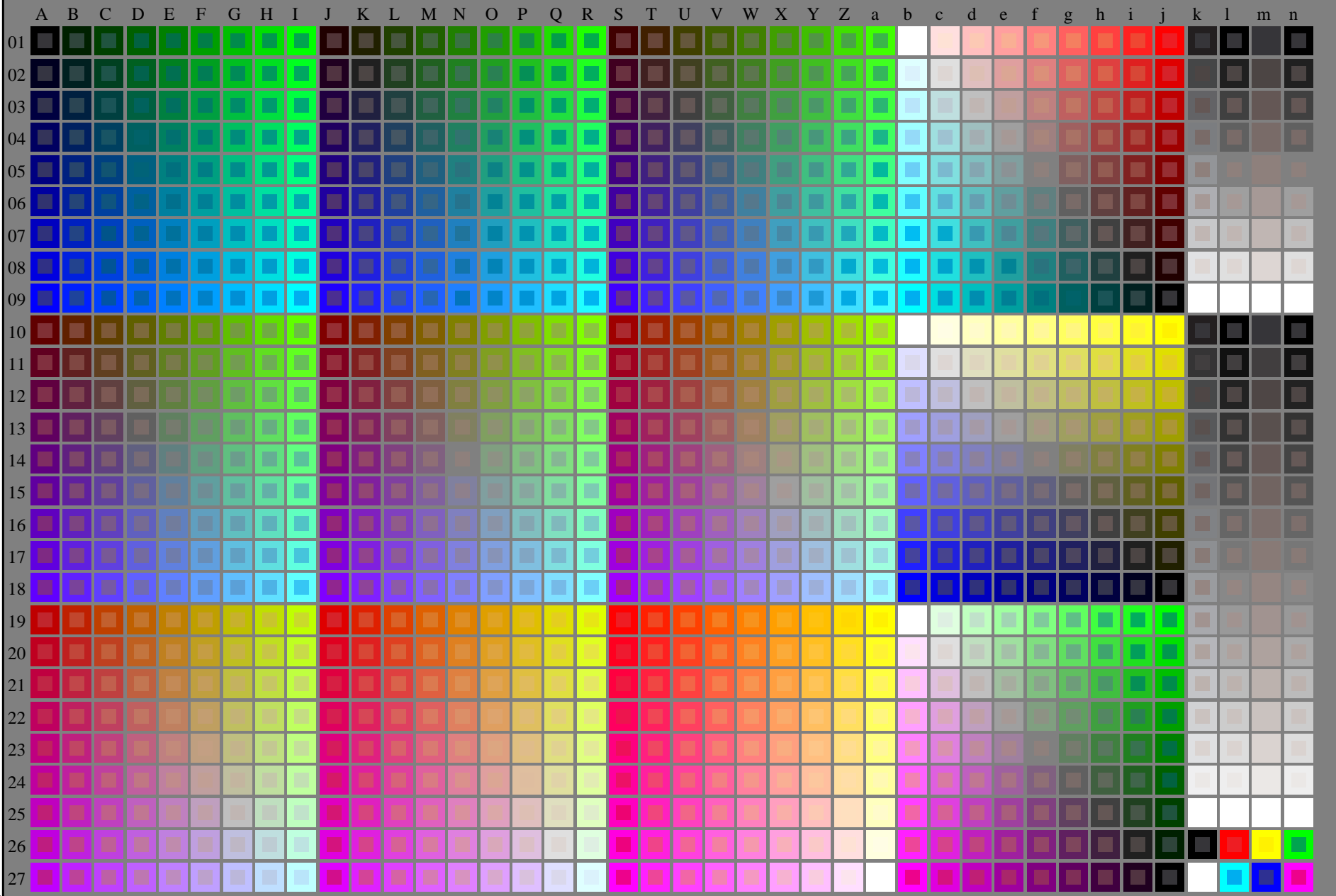
TUB registrering: 20150701-RN62/RN62L0NP.PDF /.PS TUB-material: code=rh4ta  
anvendelse for måling av laserprinter output, separasjon cmykn6 (CMYK)



http://130.149.60.45/~farbmetrik/RN62/RN62L0NP.PDF /.PS; start output  
N: ingen 3D-linearisering (OL) i fil (F) eller PS-startup (S), side 1/2

se lignende filer: <http://130.149.60.45/~farbmetrik/RN62/RN62.HTM>  
teknisk informasjon: <http://www.ps.bam.de> eller <http://130.149.60.45/~farbmetrik>

TUB registrering: 20150701-RN62/RN62L0NP.PDF /.PS  
anvendelse for måling av laserprinter output  
TUB-material: code=rh4ta



RN620-7N\_RGB 5-013030-L0

rgb (A\_j + k26\_n27), 000n (k), w (l), nnn0 (m), www (n), 3D = 0

TUB-prøveplansje RN62; 1080 standard farger, cf=1  
prøveplansje infølge DIN 33872

input: *rgb/cmyk* -> *rgb/cmyk*  
output: ingen endring

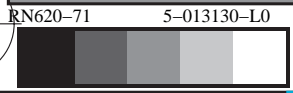
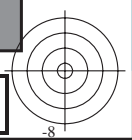
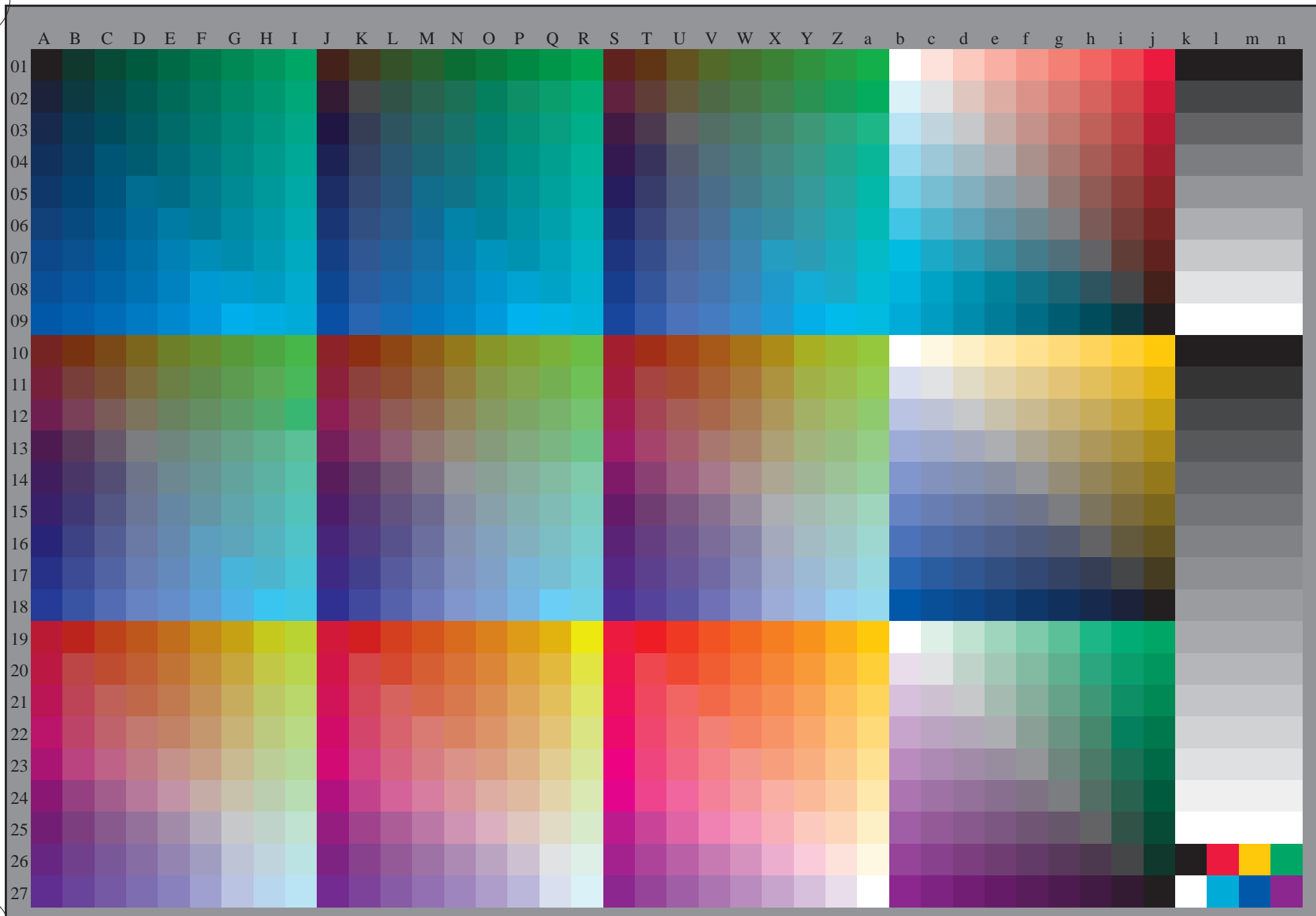


http://130.149.60.45/~farbmetrik/RN62/RN62L0NP.PDF /.PS; overføring output  
N: ingen 3D-linearisering (OL) i fil (F) eller PS-startup (S), side 2/2



se lignende filer: <http://130.149.60.45/~farbmetrik/RN62/RN62.HTM>  
teknisk informasjon: <http://www.ps.bam.de> eller <http://130.149.60.45/~farbmetrik>

TUB registrering: 20150701-RN62/RN62L0NP.PDF /.PS TUB-material: code=rh4ta  
anvendelse for måling av laserprinter output, separasjon cmykn6 (CMYK)



TUB-prøveplansje RN62; 1080 standard farger, cf=1  
prøveplansje infølge DIN 33872, 3D=0, de=1, cmyk

input: *rgb/cmyk* -> *rgbe*  
output: overføring til *cmyke*

