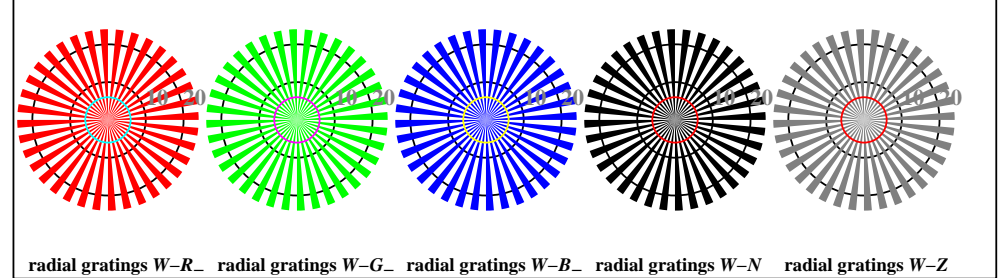


http://130.149.60.45/~farbmetrik/TN89/TN89L0FP.PDF /.PS; start output  
F: 3D-linearisering TN89/TN89LJ30FP.DAT i fil (F), side 1/22

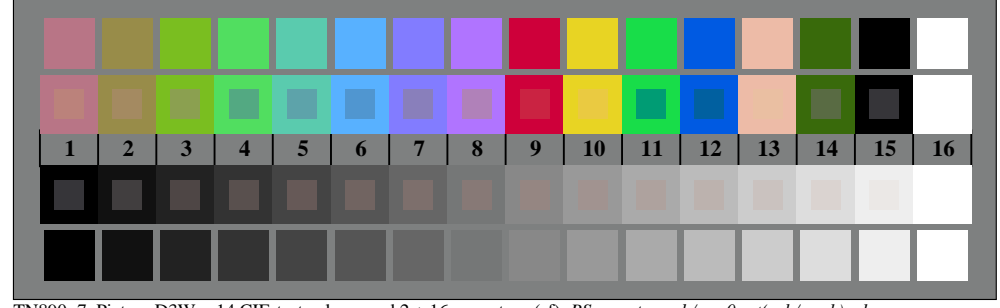
se lignende filer: [http://130.149.60.45/~farbmetrik/TN89.HTM](http://130.149.60.45/~farbmetrik/TN89/TN89.HTM)  
teknisk informasjon: <http://www.ps.bam.de> eller <http://130.149.60.45/~farbmetrik>



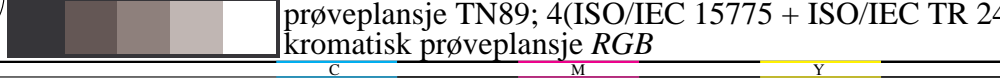
TN890-3, Picture D1W-: and 2 + 16 grey steps (sf); ; PS operator: 4 colorimage



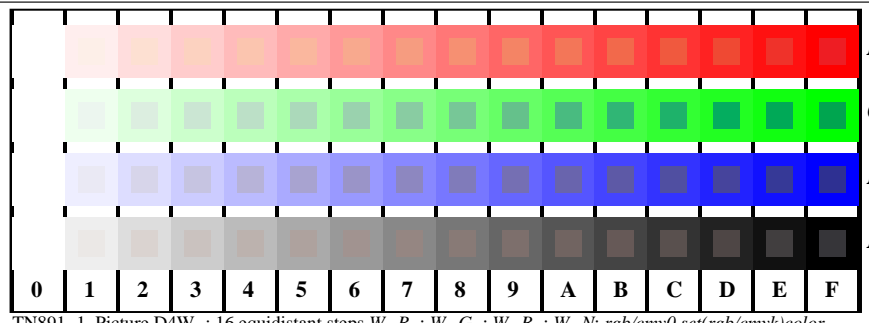
TN890-5, Picture D2W-: radial gratings W-R-; W-G-; W-B-; W-N; PS operator: rgb setrgbcolor



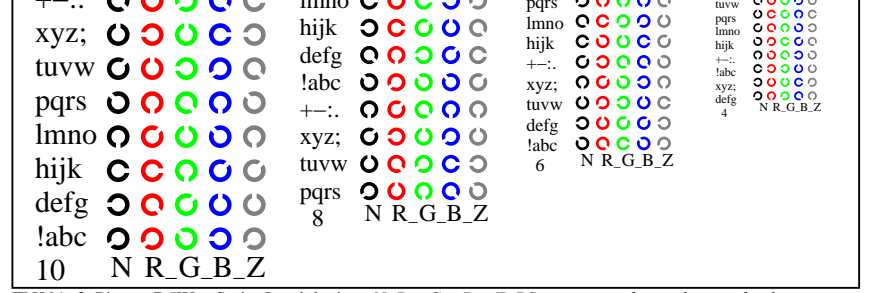
TN890-7, Picture D3W-: 14 CIE-test colours and 2 + 16 grey steps (sf); PS operator:rgb/cmy0 set(rgb/cmyk)color



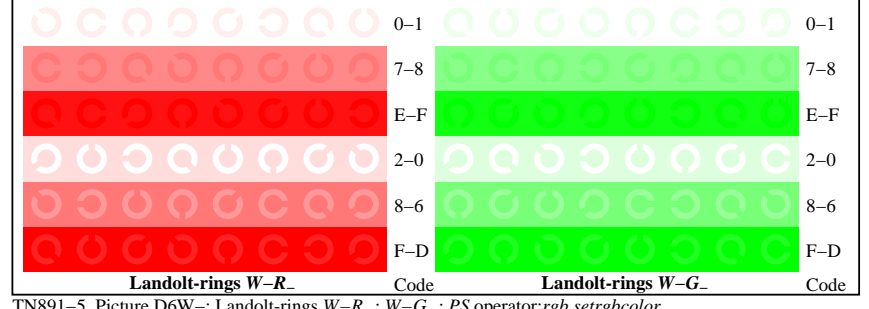
prøveplansje TN89; 4(ISO/IEC 15775 + ISO/IEC TR 24705)input: rgb/cmyk -> w/rgb/cmyk-  
kromatisk prøveplansje RGB output: ingen ending



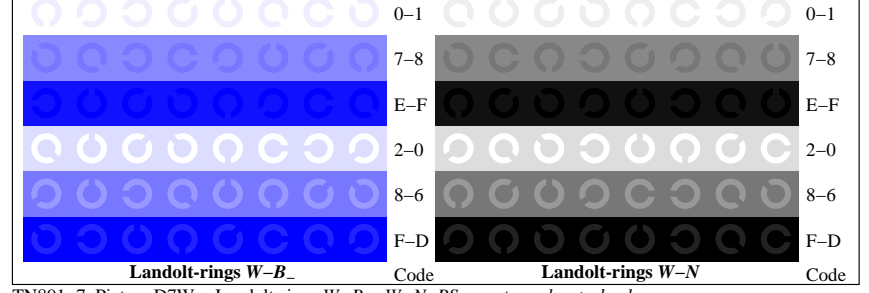
TN891-1, Picture D4W-: 16 equidistant steps W-R-; W-G-; W-B-; W-N; rgb/cmy0 set(rgb/cmyk)color



TN891-3, Picture D5W-: Script Landolt-rings N; R-; G-; B-; Z; PS operator: rgb->rgb\_ setrgbcolor



TN891-5, Picture D6W-: Landolt-rings W-R-; W-G-; PS operator:rgb setrgbcolor



TN891-7, Picture D7W-: Landolt-rings W-B-; W-N; PS operator:rgb setrgbcolor

TUB registrering: 20150701-TN89/TN89L0FP.PDF /.PS  
anvendelse for måling av laserprinter output

TUB-material: code=rh4ta