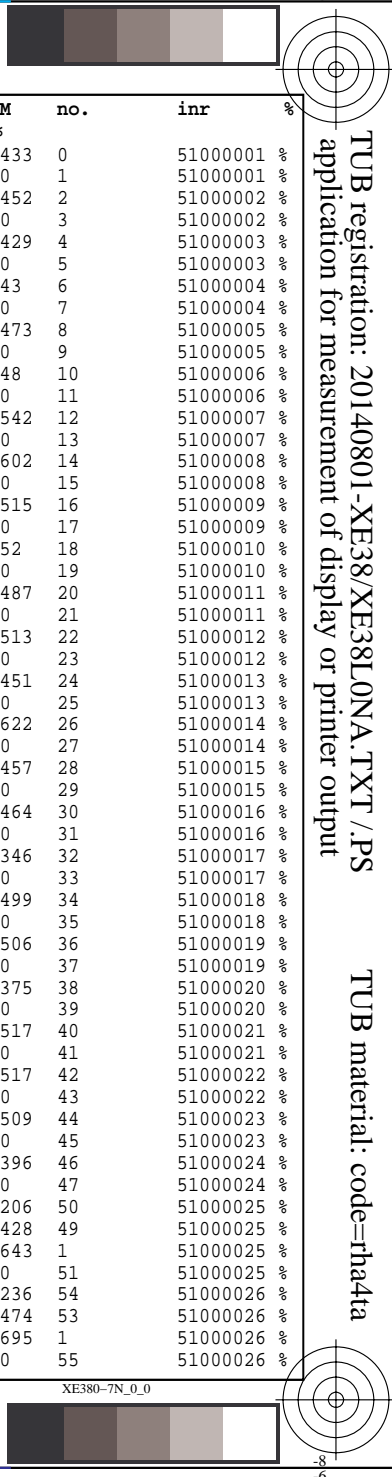
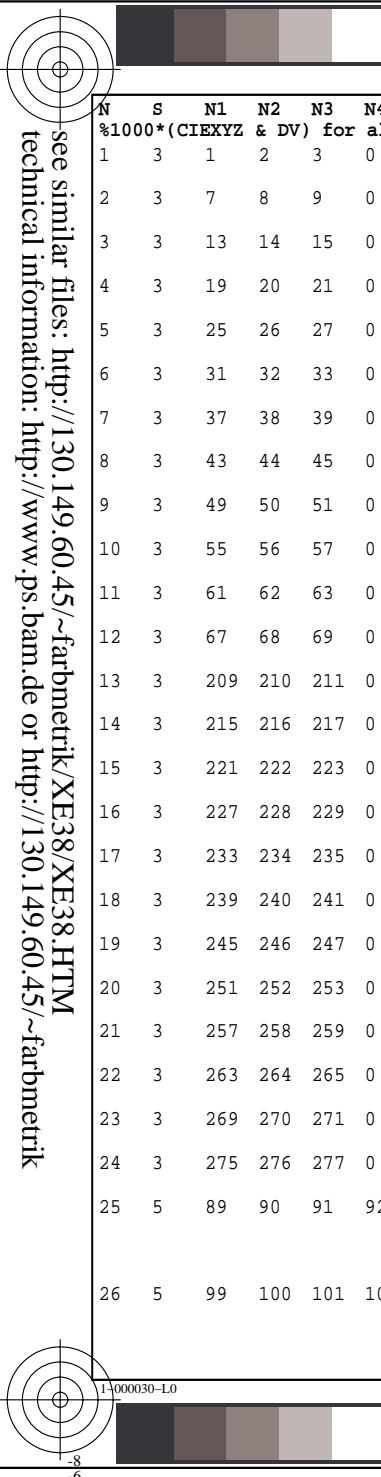


see similar files: http://130.149.60.45/~farbmetrik/XE38/XE38.HTM
technical information: http://www.ps.bam.de or http://130.149.60.45/~farbmetrik

N	S	N1	N2	N3	N4	N5	NA1	NA2	NA3	NA4	NA5	X0	Y0	Z0	L*0	a*0	b*0	X1	Y1	Z1	L*1	a*1	b*1	VIM	no.	inr	%
1	3	1	2	3	0	0	W	CW	C	0	0	43.07	51.42	77.39	76.9	-16.5	-18.2	81.89	87.15	84.89	94.8	-1.8	6.9	0.433	0	51000001	%
2	3	7	8	9	0	0	W	VW	V	0	0	30.85	28.28	46.11	60.1	15.4	-18.9	81.86	87.13	84.76	94.7	-1.8	7.0	0.452	2	51000002	%
3	3	13	14	15	0	0	W	MW	M	0	0	53.92	42.7	46.58	71.3	37.3	0.0	81.95	87.17	85.29	94.8	-1.7	6.7	0.429	4	51000003	%
4	3	19	20	21	0	0	W	OW	O	0	0	52.07	43.5	24.32	71.8	30.2	30.1	82.02	87.21	85.66	94.8	-1.6	6.4	0.43	6	51000004	%
5	3	25	26	27	0	0	W	YW	Y	0	0	71.92	80.69	32.04	91.9	-9.8	53.1	30.66	17.1	2.67	48.3	65.3	52.9	0.0	7	51000004	%
6	3	31	32	33	0	0	W	LW	L	0	0	32.29	44.66	29.33	72.6	-33.3	23.7	81.97	87.24	84.96	94.8	-1.8	6.9	0.473	8	51000005	%
7	3	37	38	39	0	0	C	CN	N	0	0	8.52	10.95	21.14	39.5	-15.4	-20.0	9.71	20.83	6.41	52.7	-62.6	40.7	0.0	9	51000006	%
8	3	43	44	45	0	0	V	VN	N	0	0	5.28	4.23	10.25	24.4	16.5	-21.2	19.77	27.96	70.59	59.8	-30.7	-42.2	0.542	12	51000007	%
9	3	49	50	51	0	0	M	MN	N	0	0	12.27	8.03	9.32	34.0	36.9	-1.8	2.98	3.09	3.08	20.4	0.6	1.8	0.0	13	51000007	%
10	3	55	56	57	0	0	O	ON	N	0	0	11.57	7.96	2.63	33.9	32.7	28.1	8.21	5.47	23.25	28.0	31.2	-43.5	0.602	14	51000008	%
11	3	61	62	63	0	0	Y	YN	N	0	0	20.09	22.16	4.76	54.2	-4.7	50.5	3.08	3.18	3.17	20.7	1.0	1.8	0.0	15	51000008	%
12	3	67	68	69	0	0	L	LN	N	0	0	5.36	8.94	4.48	35.8	-31.8	20.3	32.53	16.54	21.19	47.6	75.2	-6.1	0.515	16	51000009	%
13	3	209	210	211	0	0	W	C	N	0	0	18.97	27.01	69.41	58.9	-30.9	-42.8	2.84	2.94	2.96	19.8	0.7	1.6	0.0	17	51000009	%
14	3	215	216	217	0	0	W	V	N	0	0	7.46	4.89	21.98	26.4	31.2	-44.1	3.03	3.11	3.07	20.5	1.2	2.0	0.0	21	51000011	%
15	3	221	222	223	0	0	W	M	N	0	0	32.65	16.67	21.39	47.8	74.9	-6.1	10.24	21.55	6.75	53.5	-61.8	40.7	0.513	22	51000012	%
16	3	227	228	229	0	0	W	O	N	0	0	30.21	16.81	2.56	48.0	65.2	53.0	3.14	3.22	3.18	20.9	1.3	2.0	0.0	23	51000012	%
17	3	233	234	235	0	0	W	Y	N	0	0	66.73	73.83	7.17	88.8	-7.5	99.9	81.9	87.16	84.9	94.8	-1.8	6.9	0.451	24	51000013	%
18	3	239	240	241	0	0	W	L	N	0	0	9.33	20.32	6.4	52.2	-63.2	39.8	2.71	2.82	2.88	19.3	0.4	1.3	0.0	25	51000013	%
19	3	245	246	247	0	0	C	V	M	0	0	7.64	5.03	22.24	26.8	31.2	-43.9	2.73	2.85	2.9	19.4	0.4	1.3	0.0	27	51000014	%
20	3	251	252	253	0	0	M	O	Y	0	0	30.19	16.79	2.54	47.9	65.2	53.1	81.94	87.19	85.03	94.8	-1.8	6.8	0.457	28	51000015	%
21	3	257	258	259	0	0	Y	L	C	0	0	9.23	20.19	6.39	52.0	-63.4	39.5	2.83	2.94	3.01	19.8	0.5	1.2	0.0	29	51000015	%
22	3	263	264	265	0	0	V	C	L	0	0	18.93	26.93	69.28	58.9	-30.9	-42.8	81.96	87.2	85.25	94.8	-1.7	6.7	0.464	30	51000016	%
23	3	269	270	271	0	0	L	Y	O	0	0	66.61	73.78	7.37	88.8	-7.6	99.2	2.84	2.95	3.07	19.8	0.6	0.9	0.0	31	51000016	%
24	3	275	276	277	0	0	O	M	V	0	0	32.75	16.75	21.34	47.9	74.8	-5.9	2.67	2.78	2.85	19.1	0.4	1.1	0.0	33	51000017	%
25	5	89	90	91	92	93	W	Wc	CW	Cw	C	61.41	68.76	83.1	86.3	-9.0	-6.2	81.86	87.15	84.58	94.8	-1.8	7.1	0.499	34	51000018	%
26	5	99	100	101	102	103	W	Wv	CW	Vw	V	53.77	53.72	66.4	78.3	7.0	-7.0	2.71	2.82	2.88	19.3	0.4	1.3	0.0	35	51000018	%
																		19.13	27.14	69.68	59.1	-30.7	-42.8	0.506	36	51000019	%
																		32.77	16.79	21.38	47.9	74.7	-5.9	0.0	37	51000019	%
																		32.74	16.74	21.47	47.9	74.9	-6.1	0.375	38	51000020	%
																		66.63	73.82	7.5	88.8	-7.7	98.7	0.0	39	51000020	%
																		66.64	73.75	7.32	88.8	-7.5	99.3	0.517	40	51000021	%
																		18.96	26.97	69.34	58.9	-30.9	-42.8	0.0	41	51000021	%
																		7.53	4.95	21.87	26.6	31.1	-43.6	0.517	42	51000022	%
																		9.3	20.22	6.42	52.0	-63.0	39.5	0.0	43	51000022	%
																		9.55	20.6	6.52	52.5	-62.8	39.8	0.509	44	51000023	%
																		30.05	16.67	2.5	47.8	65.4	53.1	0.0	45	51000023	%
																		30.17	16.78	2.55	47.9	65.2	53.0	0.396	46	51000024	%
																		7.66	5.06	22.19	26.9	31.0	-43.7	0.0	47	51000024	%
																		81.96	87.19	85.24	94.8	-1.7	6.7	0.206	50	51000025	%
																		42.84	51.17	77.72	76.7	-16.5	-18.7	0.428	49	51000025	%
																		42.84	51.17	77.72	76.7	-16.5	-18.7	0.643	1	51000025	%
																		19.11	27.16	69.75	59.1	-30.8	-42.8	0.0	51	51000025	%
																		81.67	86.84	85.23	94.6	-1.6	6.5	0.236	54	51000026	%
																		31.0	28.44	46.98	60.2	15.3	-19.5	0.695	1	51000026	%
																		7.72	5.09	22.44	27.0	31.1	-43.9	0.0	55	51000026	%

TUB registration: 20140801-XE38/XE38LONA.TXT /PS
application for measurement of display or printer output

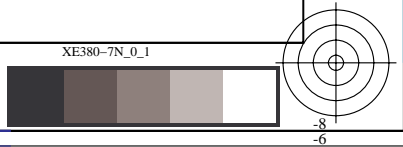
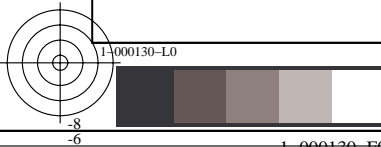
TUB material: code=rh4ta



see similar files: http://130.149.60.45/~farbmetrik/XE38/XE38L0NA.TXT /PS
technical information: http://www.ps.bam.de or http://130.149.60.45/~farbmetrik

N	S	N1	N2	N3	N4	N5	NA1	NA2	NA3	NA4	NA5	X0	Y0	Z0	L*0	a*0	b*0	X1	Y1	Z1	L*1	a*1	b*1	VIM	no.	inr	%
%1000*(CIEXYZ & DV) for all colours (a) of experiment, iimp=114, colour difference pairs VA_LC114=VIK_ADJACENT, xchart=1, xchart3=0, xchart4=0 %																											
27	5	109	110	111	112	113	W	Wm	CW	Mw	M	68.55	64.01	66.22	83.9	17.4	2.9	82.01	87.21	85.53	94.8	-1.7	6.5	0.231	58	51000027	%
																		54.22	42.96	47.36	71.5	37.3	-0.6	0.469	57	51000027	%
																		54.22	42.96	47.36	71.5	37.3	-0.6	0.69	1	51000027	%
																		32.94	16.85	21.83	48.0	74.9	-6.5	0.0	59	51000027	%
28	5	119	120	121	122	123	W	Wo	CW	Ow	O	64.91	61.74	48.22	82.7	14.5	17.8	81.89	87.15	84.58	94.8	-1.8	7.1	0.223	62	51000028	%
																		51.43	42.5	23.75	71.2	31.5	29.9	0.452	61	51000028	%
																		51.43	42.5	23.75	71.2	31.5	29.9	0.678	1	51000028	%
																		30.15	16.71	2.43	47.9	65.5	53.7	0.0	63	51000028	%
29	5	129	130	131	132	133	W	Wy	CW	Yw	Y	75.93	83.22	55.28	93.1	-6.3	28.5	81.99	87.23	85.07	94.8	-1.7	6.9	0.175	65	51000029	%
																		72.08	80.77	32.95	92.0	-9.6	51.9	0.488	66	51000029	%
																		72.08	80.77	32.95	92.0	-9.6	51.9	0.732	1	51000029	%
																		66.78	74.0	8.58	88.9	-7.7	98.6	0.0	67	51000029	%
30	5	139	140	141	142	143	W	Wl	CW	Lw	L	54.95	65.26	54.93	84.6	-17.1	14.2	81.89	87.08	85.31	94.7	-1.7	6.6	0.232	70	51000030	%
																		32.6	44.92	30.62	72.8	-32.9	22.1	0.471	69	51000030	%
																		32.6	44.92	30.62	72.8	-32.9	22.1	0.698	1	51000030	%
																		9.86	21.11	6.73	53.0	-62.7	39.9	0.0	71	51000030	%
31	5	149	150	151	152	153	C	Cn	CN	Nc	N	12.81	17.46	40.6	48.8	-23.0	-32.1	19.27	27.35	69.61	59.3	-30.8	-42.4	0.268	74	51000031	%
																		8.05	10.39	20.66	38.5	-15.5	-20.8	0.502	73	51000031	%
																		8.05	10.39	20.66	38.5	-15.5	-20.8	0.748	1	51000031	%
																		2.73	2.84	2.93	19.4	0.5	1.0	0.0	75	51000031	%
32	5	159	160	161	162	163	V	Vn	VN	Nv	N	6.16	4.41	15.59	25.0	24.1	-33.9	7.63	5.0	22.14	26.7	31.4	-43.9	0.267	78	51000032	%
																		4.84	3.85	9.87	23.1	16.4	-22.2	0.53	77	51000032	%
																		4.84	3.85	9.87	23.1	16.4	-22.2	0.796	1	51000032	%
																		2.82	2.93	2.97	19.7	0.7	1.4	0.0	79	51000032	%
33	5	169	170	171	172	173	M	Mn	MN	Nm	N	20.06	11.21	14.29	39.9	56.6	-5.2	32.8	16.75	21.46	47.9	75.0	-6.1	0.268	82	51000033	%
																		12.45	8.16	9.7	34.3	37.0	-2.5	0.5	81	51000033	%
																		12.45	8.16	9.7	34.3	37.0	-2.5	0.723	1	51000033	%
																		2.95	3.05	3.07	20.2	0.8	1.6	0.0	83	51000033	%
34	5	179	180	181	182	183	O	On	ON	No	N	18.78	11.34	2.51	40.1	49.1	39.9	30.13	16.7	2.46	47.8	65.5	53.5	0.262	86	51000034	%
																		11.28	7.75	2.62	33.4	32.5	27.4	0.49	85	51000034	%
																		11.28	7.75	2.62	33.4	32.5	27.4	0.719	1	51000034	%
																		2.74	2.86	2.95	19.5	0.3	1.1	0.0	87	51000034	%
35	5	189	190	191	192	193	Y	Yn	YN	Ny	N	39.43	44.28	6.44	72.4	-8.1	74.5	66.65	73.85	7.56	88.8	-7.7	98.5	0.248	90	51000035	%
																		19.74	21.83	4.83	53.8	-5.0	49.6	0.492	89	51000035	%
																		19.74	21.83	4.83	53.8	-5.0	49.6	0.705	1	51000035	%
																		2.81	2.92	2.97	19.7	0.5	1.4	0.0	91	51000035	%
36	5	199	200	201	202	203	L	Ln	LN	Nl	N	7.15	13.85	5.36	44.0	-47.5	30.2	9.8	21.03	6.73	52.9	-62.9	39.8	0.258	94	51000036	%
																		5.09	8.6	4.49	35.2	-32.2	19.1	0.5	93	51000036	%
																		5.09	8.6	4.49	35.2	-32.2	19.1	0.722	1	51000036	%
																		2.99	3.1	3.12	20.4	0.7	1.6	0.0	95	51000036	%
37	3	281	282	283	0	0	C	CV	V	0	0	12.12	12.75	40.67	42.3	0.0	-43.3	19.06	27.08	69.26	59.0	-30.8	-42.5	0.462	96	51000037	%
																		7.37	4.81	21.6	26.2	31.3	-43.8	0.0	97	51000037	%
																		7.37	4.81	21.6	26.2	31.3	-43.8	0.554	98	51000038	%
38	3	283	284	285	0	0	V	MV	M	0	0	16.05	8.94	20.74	35.8	52.7	-25.6	32.5	16.55	21.02	47.6	75.1	-5.7	0.0	99	51000038	%
																		32.47	16.54	20.95	47.6	75.0	-5.6	0.565	100	51000039	%
39	3	291	292	293	0	0	M	MO	O	0	0	31.56	16.8	8.9	48.0	70.3	23.5	30.15	16.75	2.52	47.9	65.3	53.2	0.0	101	51000039	%
																		30.15	16.75	2.52	47.9	65.3	53.2	0.46	102	51000040	%
40	3	293	294	295	0	0	O	YO	Y	0	0	46.53	39.4	4.83	69.0	27.5	75.8	30.15	16.75	2.52	47.9	65.3	53.2	0.46	102	51000040	%
																		66.7	73.9	7.49	88.8	-7.7	98.8	0.0	103	51000040	%
41	3	301	302	303	0	0	Y	YL	L	0	0	28.03	40.71	7.17	69.9	-37.7	67.4	66.7	73.92	7.6	88.8	-7.7	98.4	0.438	104	51000041	%
																		9.66	20.82	6.75	52.7	-62.9	39.3	0.0	105	51000041	%

TUB registration: 20140801-XE38/XE38L0NA.TXT /PS
application for measurement of display or printer output, no separation
TUB material: code=rh4ta



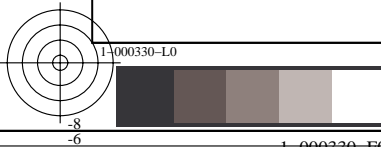
see similar files: http://130.149.60.45/~farbmetrik/XE38/XE38.HTM
technical information: http://www.ps.bam.de or http://130.149.60.45/~farbmetrik

N	S	N1	N2	N3	N4	N5	NA1	NA2	NA3	NA4	NA5	X0	Y0	Z0	L*0	a*0	b*0	X1	Y1	Z1	L*1	a*1	b*1	VIM	no.	inr
1	3	1	2	3	0	0	W	CW	C	0	0	43.07	51.42	77.39	76.9	-16.5	-18.2	81.89	87.15	84.89	94.8	-1.8	6.9	0.523	0	52000001
																		19.34	27.47	69.83	59.4	-30.9	-42.4	0.0	1	52000001
2	3	7	8	9	0	0	W	VW	V	0	0	30.85	28.28	46.11	60.1	15.4	-18.9	81.86	87.13	84.76	94.7	-1.8	7.0	0.454	2	52000002
																		7.8	5.15	22.36	27.1	31.2	-43.5	0.0	3	52000002
3	3	13	14	15	0	0	W	MW	M	0	0	53.92	42.7	46.58	71.3	37.3	0.0	81.95	87.17	85.29	94.8	-1.7	6.7	0.45	4	52000003
																		33.13	17.03	21.98	48.2	74.7	-6.4	0.0	5	52000003
4	3	19	20	21	0	0	W	OW	O	0	0	52.07	43.5	24.32	71.8	30.2	30.1	82.02	87.21	85.66	94.8	-1.6	6.4	0.4	6	52000004
																		30.66	17.1	2.67	48.3	65.3	52.9	0.0	7	52000004
5	3	25	26	27	0	0	W	YW	Y	0	0	71.92	80.69	32.04	91.9	-9.8	53.1	82.01	87.27	85.07	94.8	-1.8	6.9	0.429	8	52000005
																		66.66	73.8	6.99	88.8	-7.6	100.6	0.0	9	52000005
6	3	31	32	33	0	0	W	LW	L	0	0	32.29	44.66	29.33	72.6	-33.3	23.7	81.97	87.24	84.96	94.8	-1.8	6.9	0.501	10	52000006
																		9.71	20.83	6.41	52.7	-62.6	40.7	0.0	11	52000006
7	3	37	38	39	0	0	C	CN	N	0	0	8.52	10.95	21.14	39.5	-15.4	-20.0	19.77	27.96	70.59	59.8	-30.7	-42.2	0.541	12	52000007
																		2.98	3.09	3.08	20.4	0.6	1.8	0.0	13	52000007
8	3	43	44	45	0	0	V	VN	N	0	0	5.28	4.23	10.25	24.4	16.5	-21.2	8.21	5.47	23.25	28.0	31.2	-43.5	0.497	14	52000008
																		3.08	3.18	3.17	20.7	1.0	1.8	0.0	15	52000008
9	3	49	50	51	0	0	M	MN	N	0	0	12.27	8.03	9.32	34.0	36.9	-1.8	32.53	16.54	21.19	47.6	75.2	-6.1	0.526	16	52000009
																		2.84	2.94	2.96	19.8	0.7	1.6	0.0	17	52000009
10	3	55	56	57	0	0	O	ON	N	0	0	11.57	7.96	2.63	33.9	32.7	28.1	30.31	16.86	2.49	48.0	65.3	53.7	0.529	18	52000010
																		2.9	3.01	2.99	20.0	0.6	1.8	0.0	19	52000010
11	3	61	62	63	0	0	Y	YN	N	0	0	20.09	22.16	4.76	54.2	-4.7	50.5	66.79	74.09	7.44	88.9	-7.9	99.2	0.452	20	52000011
																		3.03	3.11	3.07	20.5	1.2	2.0	0.0	21	52000011
12	3	67	68	69	0	0	L	LN	N	0	0	5.36	8.94	4.48	35.8	-31.8	20.3	10.24	21.55	6.75	53.5	-61.8	40.7	0.438	22	52000012
																		3.14	3.22	3.18	20.9	1.3	2.0	0.0	23	52000012
13	3	209	210	211	0	0	W	C	N	0	0	18.97	27.01	69.41	58.9	-30.9	-42.8	81.9	87.16	84.9	94.8	-1.8	6.9	0.454	24	52000013
																		2.71	2.82	2.88	19.3	0.4	1.3	0.0	25	52000013
14	3	215	216	217	0	0	W	V	N	0	0	7.46	4.89	21.98	26.4	31.2	-44.1	81.87	87.12	84.91	94.7	-1.8	6.9	0.714	26	52000014
																		2.73	2.85	2.9	19.4	0.4	1.3	0.0	27	52000014
15	3	221	222	223	0	0	W	M	N	0	0	32.65	16.67	21.39	47.8	74.9	-6.1	81.94	87.19	85.03	94.8	-1.8	6.8	0.435	28	52000015
																		2.83	2.94	3.01	19.8	0.5	1.2	0.0	29	52000015
16	3	227	228	229	0	0	W	O	N	0	0	30.21	16.81	2.56	48.0	65.2	53.0	81.96	87.2	85.25	94.8	-1.7	6.7	0.479	30	52000016
																		2.84	2.95	3.07	19.8	0.6	0.9	0.0	31	52000016
17	3	233	234	235	0	0	W	Y	N	0	0	66.73	73.83	7.17	88.8	-7.5	99.9	82.0	87.31	84.7	94.8	-1.9	7.2	0.304	32	52000017
																		2.67	2.78	2.85	19.1	0.4	1.1	0.0	33	52000017
18	3	239	240	241	0	0	W	L	N	0	0	9.33	20.32	6.4	52.2	-63.2	39.8	81.86	87.15	84.58	94.8	-1.8	7.1	0.505	34	52000018
																		2.71	2.82	2.88	19.3	0.4	1.3	0.0	35	52000018
19	3	245	246	247	0	0	C	V	M	0	0	7.64	5.03	22.24	26.8	31.2	-43.9	19.13	27.14	69.68	59.1	-30.7	-42.8	0.479	36	52000019
																		32.77	16.79	21.38	47.9	74.7	-5.9	0.0	37	52000019
20	3	251	252	253	0	0	M	O	Y	0	0	30.19	16.79	2.54	47.9	65.2	53.1	32.74	16.74	21.47	47.9	74.9	-6.1	0.329	38	52000020
																		66.63	73.82	7.5	88.8	-7.7	98.7	0.0	39	52000020
21	3	257	258	259	0	0	Y	L	C	0	0	9.23	20.19	6.39	52.0	-63.4	39.5	66.64	73.75	7.32	88.8	-7.5	99.3	0.604	40	52000021
																		18.96	26.97	69.34	58.9	-30.9	-42.8	0.0	41	52000021
22	3	263	264	265	0	0	V	C	L	0	0	18.93	26.93	69.28	58.9	-30.9	-42.8	7.53	4.95	21.87	26.6	31.1	-43.6	0.587	42	52000022
																		9.3	20.22	6.42	52.0	-63.0	39.5	0.0	43	52000022
23	3	269	270	271	0	0	L	Y	O	0	0	66.61	73.78	7.37	88.8	-7.6	99.2	9.55	20.6	6.52	52.5	-62.8	39.8	0.552	44	52000023
																		30.05	16.67	2.5	47.8	65.4	53.1	0.0	45	52000023
24	3	275	276	277	0	0	O	M	V	0	0	32.75	16.75	21.34	47.9	74.8	-5.9	30.17	16.78	22.55	47.9	65.2	53.0	0.347	46	52000024
																		7.66	5.06	2.19	26.9	31.0	-43.7	0.0	47	52000024
25	5	89	90	91	92	93	W	Wc	CW	Cw	C	61.41	68.76	83.1	86.3	-9.0	-6.2	81.96	87.19	85.24	94.8	-1.7	6.7	0.22	50	52000025
																		42.84	51.17	77.72	76.7	-16.5	-18.7	0.455	49	52000025
																		42.84	51.17	77.72	76.7	-16.5	-18.7	0.664	1	52000025
																		19.11	27.16	69.75	59.1	-30.8	-42.8	0.0	51	52000025
26	5	99	100	101	102	103	W	Wv	CW	Vw	V	53.77	53.72	66.4	78.3	7.0	-7.0	81.67	86.84	85.23	94.6	-1.6	6.5	0.232	54	52000026
																		31.0	28.44	46.98	60.2	15.3	-19.5	0.444	53	52000026
																		31.0	28.44	46.98	60.2	15.3				

see similar files: http://130.149.60.45/~farbmetrik/XE38/XE38L0NA.TXT /PS
technical information: http://www.ps.bam.de or http://130.149.60.45/~farbmetrik

N	S	N1	N2	N3	N4	N5	NA1	NA2	NA3	NA4	NA5	X0	Y0	Z0	L*0	a*0	b*0	X1	Y1	Z1	L*1	a*1	b*1	VIM	no.	inr	%
%1000*(CIEXYZ & DV) for all colours (a) of experiment, iimp=114, colour difference pairs KA_LC114=KIT_ADJACENT, xchart=3, xchart3=0, xchart4=1 %																											
27	5	109	110	111	112	113	W	Wm	CW	Mw	M	68.55	64.01	66.22	83.9	17.4	2.9	82.01	87.21	85.53	94.8	-1.7	6.5	0.255	58	52000027	%
																		54.22	42.96	47.36	71.5	37.3	-0.6	0.473	57	52000027	%
																		54.22	42.96	47.36	71.5	37.3	-0.6	0.708	1	52000027	%
																		32.94	16.85	21.83	48.0	74.9	-6.5	0.0	59	52000027	%
28	5	119	120	121	122	123	W	Wo	CW	Ow	O	64.91	61.74	48.22	82.7	14.5	17.8	81.89	87.15	84.58	94.8	-1.8	7.1	0.226	62	52000028	%
																		51.43	42.5	23.75	71.2	31.5	29.9	0.447	61	52000028	%
																		51.43	42.5	23.75	71.2	31.5	29.9	0.689	1	52000028	%
																		30.15	16.71	2.43	47.9	65.5	53.7	0.0	63	52000028	%
29	5	129	130	131	132	133	W	Wy	CW	Yw	Y	75.93	83.22	55.28	93.1	-6.3	28.5	81.99	87.23	85.07	94.8	-1.7	6.9	0.235	66	52000029	%
																		72.08	80.77	32.95	92.0	-9.6	51.9	0.46	65	52000029	%
																		72.08	80.77	32.95	92.0	-9.6	51.9	0.718	1	52000029	%
																		66.78	74.0	7.58	88.9	-7.7	98.6	0.0	67	52000029	%
30	5	139	140	141	142	143	W	Wl	CW	Lw	L	54.95	65.26	54.93	84.6	-17.1	14.2	81.89	87.08	85.31	94.7	-1.7	6.6	0.251	70	52000030	%
																		32.6	44.92	30.62	72.8	-32.9	22.1	0.463	69	52000030	%
																		32.6	44.92	30.62	72.8	-32.9	22.1	0.695	1	52000030	%
																		9.86	21.11	6.73	53.0	-62.7	39.9	0.0	71	52000030	%
31	5	149	150	151	152	153	C	Cn	CN	Nc	N	12.81	17.46	40.6	48.8	-23.0	-32.1	19.27	27.35	69.61	59.3	-30.8	-42.4	0.285	74	52000031	%
																		8.05	10.39	20.66	38.5	-15.5	-20.8	0.511	73	52000031	%
																		8.05	10.39	20.66	38.5	-15.5	-20.8	0.763	1	52000031	%
																		2.73	2.84	2.93	19.4	0.5	1.0	0.0	75	52000031	%
32	5	159	160	161	162	163	V	Vn	VN	Nv	N	6.16	4.41	15.59	25.0	24.1	-33.9	7.63	5.0	22.14	26.7	31.4	-43.9	0.217	78	52000032	%
																		4.84	3.85	9.87	23.1	16.4	-22.2	0.482	77	52000032	%
																		4.84	3.85	9.87	23.1	16.4	-22.2	0.785	1	52000032	%
																		2.82	2.93	2.97	19.7	0.7	1.4	0.0	79	52000032	%
33	5	169	170	171	172	173	M	Mn	MN	Nm	N	20.06	11.21	14.29	39.9	56.6	-5.2	32.8	16.75	21.46	47.9	75.0	-6.1	0.291	82	52000033	%
																		12.45	8.16	9.7	34.3	37.0	-2.5	0.521	81	52000033	%
																		12.45	8.16	9.7	34.3	37.0	-2.5	0.714	1	52000033	%
																		2.95	3.05	3.07	20.2	0.8	1.6	0.0	83	52000033	%
34	5	179	180	181	182	183	O	On	ON	No	N	18.78	11.34	2.51	40.1	49.1	39.9	30.13	16.7	2.46	47.8	65.5	53.5	0.284	86	52000034	%
																		11.28	7.75	2.62	33.4	32.5	27.4	0.482	85	52000034	%
																		11.28	7.75	2.62	33.4	32.5	27.4	0.72	1	52000034	%
																		2.74	2.86	2.95	19.5	0.3	1.1	0.0	87	52000034	%
35	5	189	190	191	192	193	Y	Yn	YN	Ny	N	39.43	44.28	6.44	72.4	-8.1	74.5	66.65	73.85	7.56	88.8	-7.7	98.5	0.273	90	52000035	%
																		19.74	21.83	4.83	53.8	-5.0	49.6	0.491	89	52000035	%
																		19.74	21.83	4.83	53.8	-5.0	49.6	0.679	1	52000035	%
																		2.81	2.92	2.97	19.7	0.5	1.4	0.0	91	52000035	%
36	5	199	200	201	202	203	L	Ln	LN	Nl	N	7.15	13.85	5.36	44.0	-47.5	30.2	9.8	21.03	6.73	52.9	-62.9	39.8	0.27	94	52000036	%
																		5.09	8.6	4.49	35.2	-32.2	19.1	0.46	93	52000036	%
																		5.09	8.6	4.49	35.2	-32.2	19.1	0.735	1	52000036	%
																		2.99	3.1	3.12	20.4	0.7	1.6	0.0	95	52000036	%
37	3	281	282	283	0	0	C	CV	V	0	0	12.12	12.75	40.67	42.3	0.0	-43.3	19.06	27.08	69.26	59.0	-30.8	-42.5	0.476	96	52000037	%
																		7.37	4.81	21.6	26.2	31.3	-43.8	0.0	97	52000037	%
																		7.37	4.81	21.6	26.2	31.3	-43.8	0.526	98	52000038	%
38	3	283	284	285	0	0	V	MV	M	0	0	16.05	8.94	20.74	35.8	52.7	-25.6	32.5	16.55	21.02	47.6	75.1	-5.7	0.0	99	52000038	%
																		32.47	16.54	20.95	47.6	75.0	-5.6	0.607	100	52000039	%
																		30.15	16.75	2.52	47.9	65.3	53.2	0.0	101	52000039	%
39	3	291	292	293	0	0	M	MO	O	0	0	31.56	16.8	8.9	48.0	70.3	23.5	32.47	16.54	20.95	47.6	75.0	-5.6	0.607	100	52000039	%
																		30.15	16.75	2.52	47.9	65.3	53.2	0.5	102	52000040	%
																		30.15	16.75	2.52	47.9	65.3	53.2	0.5	102	52000040	%
																		66.7	73.9	7.49	88.8	-7.7	98.8	0.0	103	52000040	%
40	3	293	294	295	0	0	O	YO	Y	0	0	46.53	39.4	4.83	69.0	27.5	75.8	66.7	73.9	7.49	88.8	-7.7	98.8	0.0	103	52000040	%
																		66.7	73.9	7.49	88.8	-7.7	98.8	0.0	103	52000040	%
41	3	301	302	303	0	0	Y	YL	L	0	0	28.03	40.71	7.17	69.9	-37.7	67.4	66.7	73.92	7.6	88.8	-7.7	98.4	0.525	104	52000041	%
																		9.66	20.82	6.75	52.7	-62.9	39.3	0.0	105	52000041	%

TUB registration: 20140801-XE38/XE38L0NA.TXT /PS
application for measurement of display or printer output, no separation
TUB material: code=rh4ta



see similar files: http://130.149.60.45/~farbmetrik/XE38/XE38L0NA.TXT /PS
technical information: http://www.ps.bam.de or http://130.149.60.45/~farbmetrik

N	S	N1	N2	N3	N4	N5	NA1	NA2	NA3	NA4	NA5	X0	Y0	Z0	L*0	a*0	b*0	X1	Y1	Z1	L*1	a*1	b*1	VIM	no.	inr	%
%1000*(CIEXYZ & DV) for all colours (a) of experiment, iimp=114, colour difference pairs KS_LC114=KIT_SEPARATE, xchart=5, xchart3=0, xchart4=2 %																											
27	5	114	115	116	117	118	W	Wm	CW	Mw	M	68.48	63.94	66.14	83.9	17.5	2.9	82.1	87.32	85.54	94.8	-1.7	6.6	0.223	58	53000027	%
																		54.23	42.93	47.4	71.5	37.4	-0.6	0.473	57	53000027	%
																		54.23	42.93	47.4	71.5	37.4	-0.6	0.691	1	53000027	%
																		33.03	16.93	21.84	48.1	74.9	-6.4	0.0	59	53000027	%
28	5	124	125	126	127	128	W	Wo	CW	Ow	O	64.83	61.63	48.41	82.7	14.6	17.5	81.81	87.07	85.02	94.7	-1.8	6.8	0.244	62	53000028	%
																		51.47	42.56	23.62	71.2	31.4	30.2	0.47	61	53000028	%
																		51.47	42.56	23.62	71.2	31.4	30.2	0.688	1	53000028	%
																		30.0	16.64	2.51	47.8	65.3	53.0	0.0	63	53000028	%
29	5	134	135	136	137	138	W	Wy	CW	Yw	Y	76.36	84.01	54.88	93.4	-6.9	29.5	81.83	87.02	85.04	94.7	-1.7	6.7	0.241	66	53000029	%
																		71.58	80.17	30.74	91.7	-9.5	54.5	0.508	65	53000029	%
																		71.58	80.17	30.74	91.7	-9.5	54.5	0.811	1	53000029	%
																		66.03	73.0	7.06	88.4	-7.3	99.7	0.0	67	53000029	%
30	5	144	145	146	147	148	W	Wl	CW	Lw	L	54.95	65.24	54.93	84.6	-17.1	14.2	81.98	87.2	85.39	94.8	-1.7	6.6	0.217	70	53000030	%
																		32.57	44.85	30.76	72.7	-32.8	21.8	0.451	69	53000030	%
																		32.57	44.85	30.76	72.7	-32.8	21.8	0.697	1	53000030	%
																		9.88	21.1	6.79	53.0	-62.5	39.7	0.0	71	53000030	%
31	5	154	155	156	157	158	C	Cn	CN	Nc	N	12.92	17.6	40.75	49.0	-23.1	-32.0	19.26	27.33	69.8	59.2	-30.8	-42.6	0.276	74	53000031	%
																		8.1	10.44	21.02	38.6	-15.4	-21.3	0.505	73	53000031	%
																		8.1	10.44	21.02	38.6	-15.4	-21.3	0.758	1	53000031	%
																		2.75	2.87	2.96	19.5	0.4	1.0	0.0	75	53000031	%
32	5	164	165	166	167	168	V	Vn	VN	Nv	N	6.07	4.26	15.28	24.5	25.2	-34.0	7.69	4.9	21.89	26.4	33.2	-43.9	0.17	78	53000032	%
																		4.69	3.66	9.65	22.5	17.3	-22.7	0.492	77	53000032	%
																		4.69	3.66	9.65	22.5	17.3	-22.7	0.833	1	53000032	%
																		2.97	3.04	2.94	20.2	1.3	2.4	0.0	79	53000032	%
33	5	174	175	176	177	178	M	Mn	MN	Nm	N	20.09	11.25	14.42	40.0	56.4	-5.3	32.96	16.88	21.78	48.1	74.9	-6.4	0.282	82	53000033	%
																		12.49	8.17	9.82	34.3	37.2	-2.9	0.5	81	53000033	%
																		12.49	8.17	9.82	34.3	37.2	-2.9	0.732	1	53000033	%
																		2.96	3.07	3.14	20.3	0.7	1.3	0.0	83	53000033	%
34	5	184	185	186	187	188	O	On	ON	No	N	18.78	11.36	2.55	40.1	49.0	39.6	30.09	16.71	2.48	47.8	65.3	53.4	0.282	86	53000034	%
																		11.28	7.74	2.61	33.4	32.6	27.5	0.482	85	53000034	%
																		11.28	7.74	2.61	33.4	32.6	27.5	0.71	1	53000034	%
																		2.77	2.88	2.97	19.5	0.7	1.1	0.0	87	53000034	%
35	5	194	195	196	197	198	Y	Yn	YN	Ny	N	39.61	44.43	6.37	72.5	-8.0	74.9	65.87	72.76	6.94	88.3	-7.2	99.9	0.299	90	53000035	%
																		19.92	22.01	4.66	54.0	-4.8	50.7	0.5	89	53000035	%
																		19.92	22.01	4.66	54.0	-4.8	50.7	0.702	1	53000035	%
																		2.91	3.0	2.98	20.0	1.0	1.8	0.0	91	53000035	%
36	5	204	205	206	207	208	L	Ln	LN	Nl	N	7.13	13.81	5.32	43.9	-47.5	30.2	9.77	20.96	6.66	52.9	-62.7	39.9	0.272	94	53000036	%
																		5.07	8.54	4.42	35.0	-31.9	19.3	0.451	93	53000036	%
																		5.07	8.54	4.42	35.0	-31.9	19.3	0.704	1	53000036	%
																		2.95	3.06	3.08	20.2	0.7	1.6	0.0	95	53000036	%
37	3	286	287	288	0	0	C	CV	V	0	0	12.22	12.84	40.95	42.5	0.1	-43.4	19.08	27.11	69.59	59.0	-30.8	-42.8	0.511	96	53000037	%
																		7.46	4.9	21.88	26.4	31.1	-43.9	0.0	97	53000037	%
																		7.46	4.9	21.88	26.4	31.1	-43.9	0.541	98	53000038	%
38	3	288	289	290	0	0	V	MV	M	0	0	16.31	9.08	21.19	36.1	53.0	-25.9	32.55	16.64	21.22	47.8	74.7	-5.9	0.0	99	53000038	%
																		32.55	16.56	21.12	47.7	75.0	-5.9	0.594	100	53000039	%
39	3	296	297	298	0	0	M	MO	O	0	0	31.69	16.9	8.99	48.1	70.2	23.4	30.21	16.78	2.54	47.9	65.4	53.1	0.0	101	53000039	%
																		30.21	16.78	2.54	47.9	65.4	53.1	0.47	102	53000040	%
40	3	298	299	300	0	0	O	YO	Y	0	0	46.51	39.35	4.9	69.0	27.6	75.4	30.21	16.78	2.54	47.9	65.4	53.1	0.0	103	53000040	%
																		66.88	74.05	7.6	88.9	-7.6	98.6	0.0	104	53000041	%
41	3	306	307	308	0	0	Y	YL	L	0	0	27.96	40.59	7.13	69.8	-37.6	67.4	66.39	73.52	7.53	88.6	-7.6	98.4	0.528	104	53000041	%
																		9.64	20.74	6.84	52.6	-62.8	38.8	0.0	105	53000041	%

TUB registration: 20140801-XE38/XE38L0NA.TXT /PS
application for measurement of display or printer output, no separation
TUB material: code=rh4ta

see similar files: http://130.149.60.45/~farbmetrik/XE38/XE38.HTM
technical information: http://www.ps.bam.de or http://130.149.60.45/~farbmetrik

N	S	N1	N2	N3	N4	N5	NA1	NA2	NA3	NA4	NA5	X0	Y0	Z0	L*0	a*0	b*0	X1	Y1	Z1	L*1	a*1	b*1	VIM	no.	inr
1	3	1	2	3	0	0	W	CW	C	0	0	37.41	46.32	59.43	73.7	-19.6	-17.2	70.18	75.43	60.81	89.5	-2.2	8.7	0.505	0	54000001
																		17.21	26.57	53.54	58.5	-37.9	-37.5	0.0	1	54000001
2	3	7	8	9	0	0	W	VW	V	0	0	27.07	26.22	37.48	58.2	9.6	-19.5	70.17	75.41	60.69	89.5	-2.2	8.8	0.527	2	54000002
																		6.84	5.49	17.84	28.1	18.3	-39.1	0.0	3	54000002
3	3	13	14	15	0	0	W	MW	M	0	0	46.93	38.26	36.66	68.2	33.0	-1.2	70.23	75.46	60.54	89.6	-2.2	8.9	0.508	4	54000003
																		29.15	16.39	18.21	47.5	64.2	-6.5	0.0	5	54000003
4	3	19	20	21	0	0	W	OW	O	0	0	45.48	38.09	19.72	68.0	29.4	25.8	70.67	75.88	61.1	89.8	-2.1	8.8	0.465	6	54000004
																		27.37	16.11	3.05	47.1	58.7	44.8	0.0	7	54000004
5	3	25	26	27	0	0	W	YW	Y	0	0	60.34	64.29	20.89	84.1	-0.8	51.2	70.21	75.53	60.29	89.6	-2.3	9.2	0.565	8	54000005
																		59.91	63.78	6.8	83.8	-0.7	88.5	0.0	9	54000005
6	3	31	32	33	0	0	W	LW	L	0	0	29.12	39.62	23.33	69.2	-29.4	20.9	70.55	75.88	60.81	89.8	-2.3	9.0	0.512	10	54000006
																		9.49	18.44	5.75	50.0	-52.0	34.8	0.0	11	54000006
7	3	37	38	39	0	0	C	CN	N	0	0	10.47	7.63	3.05	33.2	28.0	20.8	26.97	15.82	3.0	46.7	58.8	44.5	0.438	12	54000007
																		3.27	3.5	3.21	21.9	-0.4	0.3	0.0	13	54000007
8	3	43	44	45	0	0	V	VN	N	0	0	4.65	4.25	8.4	24.5	8.6	-19.7	6.92	5.48	18.33	28.1	19.3	-40.2	0.484	14	54000008
																		3.32	3.55	3.27	22.1	-0.5	0.3	0.0	15	54000008
9	3	49	50	51	0	0	M	MN	N	0	0	10.91	7.74	8.17	33.4	30.4	-3.5	28.83	16.04	17.9	47.0	64.9	-6.6	0.487	16	54000009
																		3.27	3.49	3.22	21.9	-0.3	0.2	0.0	17	54000009
10	3	55	56	57	0	0	O	ON	N	0	0	10.47	7.63	3.05	33.2	28.0	20.8	26.97	15.82	3.0	46.7	58.8	44.5	0.48	18	54000010
																		3.27	3.5	3.21	21.9	-0.4	0.3	0.0	19	54000010
11	3	61	62	63	0	0	Y	YN	N	0	0	18.22	19.56	4.76	51.3	-1.3	41.8	59.87	63.66	7.18	83.7	-0.5	86.9	0.467	20	54000011
																		3.36	3.59	3.27	22.3	-0.5	0.5	0.0	21	54000011
12	3	67	68	69	0	0	L	LN	N	0	0	5.41	8.32	4.35	34.6	-25.5	15.3	9.64	18.38	6.24	49.9	-50.5	32.5	0.488	22	54000012
																		3.3	3.53	3.23	22.0	-0.5	0.3	0.0	23	54000012
13	3	209	210	211	0	0	W	C	N	0	0	17.85	27.5	53.88	59.4	-38.1	-36.4	71.21	76.6	61.16	90.1	-2.3	9.3	0.448	24	54000013
																		3.43	3.66	3.31	22.5	-0.3	0.6	0.0	25	54000013
14	3	215	216	217	0	0	W	V	N	0	0	7.2	5.75	18.39	28.8	19.0	-39.1	71.02	76.37	60.91	90.0	-2.3	9.3	0.591	26	54000014
																		3.46	3.68	3.33	22.6	-0.2	0.7	0.0	27	54000014
15	3	221	222	223	0	0	W	M	N	0	0	29.71	16.78	18.81	48.0	64.2	-6.9	70.75	76.04	60.81	89.8	-2.2	9.2	0.433	28	54000015
																		3.5	3.71	3.31	22.7	0.0	0.9	0.0	29	54000015
16	3	227	228	229	0	0	W	O	N	0	0	27.66	16.38	3.19	47.4	58.4	44.4	71.0	76.32	61.09	90.0	-2.2	9.1	0.475	30	54000016
																		3.51	3.73	3.36	22.8	-0.1	0.7	0.0	31	54000016
17	3	233	234	235	0	0	W	Y	N	0	0	60.73	64.72	7.05	84.3	-0.9	88.4	71.22	76.6	60.9	90.1	-2.3	9.5	0.367	32	54000017
																		3.41	3.63	3.22	22.4	-0.2	1.1	0.0	33	54000017
18	3	239	240	241	0	0	W	L	N	0	0	10.04	19.13	5.95	50.8	-51.1	35.3	71.0	76.38	60.85	90.0	-2.3	9.4	0.442	34	54000018
																		3.43	3.66	3.3	22.5	-0.4	0.7	0.0	35	54000018
19	3	245	246	247	0	0	C	V	M	0	0	7.34	5.86	18.46	29.0	19.1	-38.7	17.93	27.56	53.72	59.4	-37.9	-36.1	0.51	36	54000019
																		29.56	16.74	18.53	47.9	63.8	-6.4	0.0	37	54000019
20	3	251	252	253	0	0	M	O	Y	0	0	27.65	16.36	3.09	47.4	58.5	45.0	60.76	64.81	7.18	84.3	-1.0	88.0	0.343	38	54000020
																		29.87	16.86	18.92	48.0	64.4	-6.9	0.0	39	54000020
21	3	257	258	259	0	0	Y	L	C	0	0	9.96	18.96	5.85	50.6	-50.9	35.4	60.43	64.34	7.08	84.1	-0.7	87.9	0.508	40	54000021
																		17.54	27.14	52.95	59.1	-38.4	-36.0	0.0	41	54000021
22	3	263	264	265	0	0	V	C	L	0	0	17.81	27.46	53.88	59.4	-38.2	-36.4	7.17	5.69	18.36	28.6	19.4	-39.3	0.535	42	54000022
																		10.04	19.18	5.88	50.9	-51.4	35.7	0.0	43	54000022
23	3	269	270	271	0	0	L	Y	O	0	0	60.28	64.28	7.16	84.1	-1.0	87.5	10.17	19.39	5.91	51.1	-51.4	36.0	0.526	44	54000023
																		27.51	16.28	3.09	47.3	58.4	44.9	0.0	45	54000023
24	3	275	276	277	0	0	O	M	V	0	0	29.71	16.77	18.78	47.9	64.3	-6.8	27.66	16.36	3.17	47.4	58.5	44.5	0.559	46	54000024
																		7.34	5.82	18.64	28.9	19.6	-39.3	0.0	47	54000024
25	4	89	90	91	0	0	W	Wc	CW	0	0	52.71	60.24	60.72	81.9	-10.5	-4.3	70.97	76.26	61.51	89.9	-2.2	8.7	0.498	48	54000025
																		36.36	45.16	56.82	73.0	-19.8	-16.0	0.0	49	54000025
26	4	99	100	101	0	0	W	Wv	CW	0	0	45.94	47.12	48.62	74.2	4.1	-5.2	70.48	75.71	61.07	89.7	-2.1	8.6	0.483	50	54000026
																		26.63	25.81	36.12	57.8	9.5	-18.3	0.0	51	54000026

TUB registration: 20140801-XE38/XE38L0NA.TXT /PS
application for measurement of display or printer output, no separation
TUB material: code=rh4ta

N	S	N1	N2	N3	N4	N5	NA1	NA2	NA3	NA4	NA5	X0	Y0	Z0	L*0	a*0	b*0	X1	Y1	Z1	L*1	a*1	b*1	VIM	no.	inr	%
%1000*(CIEXYZ & DV) for all colours (a) of experiment, iimp=98, colour difference pairs MA_LC098=MEL_ADJACENT, xchart=7, xchart3=0, xchart4=3 %																											
27	4	109	110	111	0	0	W	Wm	CW	0	0	58.89	55.88	48.08	79.5	15.3	4.4	70.61	75.84	61.31	89.7	-2.1	8.5	0.505	52	54000027	%
																		46.49	37.94	35.34	67.9	32.8	0.1	0.0	53	54000027	%
28	4	119	120	121	0	0	W	Wo	CW	0	0	56.18	53.67	34.5	78.2	14.1	19.0	70.74	76.03	61.0	89.8	-2.2	9.0	0.525	54	54000028	%
																		44.96	37.44	17.44	67.6	30.0	29.8	0.0	55	54000028	%
29	4	129	130	131	0	0	W	Wy	CW	0	0	66.27	72.0	39.18	87.9	-3.8	29.5	71.03	76.32	61.36	90.0	-2.2	8.9	0.489	56	54000029	%
																		62.99	68.91	22.31	86.4	-4.7	52.5	0.0	57	54000029	%
30	4	139	140	141	0	0	W	Wl	CW	0	0	47.55	56.51	38.93	79.9	-15.6	15.9	70.92	76.17	61.7	89.9	-2.1	8.4	0.488	58	54000030	%
																		28.71	39.05	21.87	68.7	-29.2	22.9	0.0	59	54000030	%
31	4	91	92	93	0	0	CW	Cw	C	0	0	25.49	34.86	55.62	65.6	-28.7	-27.4	36.36	45.16	56.82	73.0	-19.8	-16.0	0.575	60	54000031	%
																		15.14	23.77	50.87	55.8	-38.0	-39.4	0.0	61	54000031	%
32	4	101	102	103	0	0	VW	Vw	V	0	0	15.03	13.62	27.53	43.7	13.7	-30.1	26.63	25.81	36.12	57.8	9.5	-18.3	0.466	62	54000032	%
																		6.75	5.59	18.33	28.4	16.2	-39.7	0.0	63	54000032	%
33	4	111	112	113	0	0	MW	Mw	M	0	0	37.18	25.66	25.78	57.7	48.7	-3.1	46.49	37.94	35.34	67.9	32.8	0.1	0.574	64	54000033	%
																		28.63	16.0	17.26	46.9	64.4	-5.3	0.0	65	54000033	%
34	4	121	122	123	0	0	OW	Ow	O	0	0	35.16	24.73	7.54	56.8	45.8	39.0	44.96	37.44	17.44	67.6	30.0	29.8	0.569	66	54000034	%
																		26.93	15.77	2.77	46.6	58.9	46.0	0.0	67	54000034	%
35	4	131	132	133	0	0	YW	Yw	Y	0	0	61.2	66.21	11.14	85.1	-3.0	75.8	62.99	68.91	22.31	86.4	-4.7	52.5	0.507	68	54000035	%
																		59.49	62.68	5.9	83.2	0.7	91.4	0.0	69	54000035	%
36	4	141	142	143	0	0	LW	Lw	L	0	0	17.59	27.98	12.47	59.8	-41.4	28.5	28.71	39.05	21.87	68.7	-29.2	22.9	0.537	70	54000036	%
																		8.75	17.27	5.79	48.6	-52.1	32.1	0.0	71	54000036	%
37	4	149	150	151	0	0	C	Cn	CN	0	0	10.35	15.49	30.2	46.3	-29.2	-29.8	15.06	23.72	50.74	55.8	-38.3	-39.3	0.437	72	54000037	%
																		7.0	9.79	16.56	37.4	-20.4	-20.1	0.0	73	54000037	%
38	4	159	160	161	0	0	V	Vn	VN	0	0	5.54	4.92	12.9	26.5	10.9	-30.0	6.54	5.43	17.84	27.9	16.0	-39.4	0.409	74	54000038	%
																		4.57	4.37	8.48	24.8	6.1	-19.4	0.0	75	54000038	%
39	4	169	170	171	0	0	M	Mn	MN	0	0	17.64	10.94	11.86	39.4	46.6	-4.8	28.22	15.75	16.81	46.6	64.2	-4.9	0.427	76	54000039	%
																		11.41	8.3	8.57	34.6	29.0	-2.9	0.0	77	54000039	%
40	4	179	180	181	0	0	O	On	ON	0	0	16.9	10.93	3.06	39.4	42.6	31.5	26.64	15.64	2.85	46.5	58.5	45.1	0.431	78	54000040	%
																		10.5	7.71	2.99	33.4	27.5	21.5	0.0	79	54000040	%
41	4	189	190	191	0	0	Y	Yn	YN	0	0	35.17	37.82	5.42	67.8	-1.8	67.1	59.71	62.93	5.83	83.4	0.6	92.0	0.53	80	54000041	%
																		18.22	19.62	4.63	51.4	-1.6	42.6	0.0	81	54000041	%

see similar files: http://130.149.60.45/~farbmetrik/XE38/XE38L0NA.TXT /.PS; transfer output
technical information: http://www.ps.bam.de or http://130.149.60.45/~farbmetrik

TUB registration: 20140801-XE38/XE38L0NA.TXT /.PS
application for measurement of display or printer output, no separation
TUB material: code=rh4ta

see similar files: http://130.149.60.45/~farbmetrik/XE38/XE38.HTM
technical information: http://www.ps.bam.de or http://130.149.60.45/~farbmetrik

N	S	N1	N2	N3	N4	N5	NA1	NA2	NA3	NA4	NA5	X0	Y0	Z0	L*0	a*0	b*0	X1	Y1	Z1	L*1	a*1	b*1	VIM	no.	inr
1	3	1	2	3	0	0	W	CW	C	0	0	43.07	51.42	77.39	76.9	-16.5	-18.2	81.89	87.15	84.89	94.8	-1.8	6.9	0.433	0	41000001
																		19.34	27.47	69.83	59.4	-30.9	-42.4	0.0	1	41000001
2	3	7	8	9	0	0	W	VW	V	0	0	30.85	28.28	46.11	60.1	15.4	-18.9	81.86	87.13	84.76	94.7	-1.8	7.0	0.452	2	41000002
																		7.8	5.15	22.36	27.1	31.2	-43.5	0.0	3	41000002
3	3	13	14	15	0	0	W	MW	M	0	0	53.92	42.7	46.58	71.3	37.3	0.0	81.95	87.17	85.29	94.8	-1.7	6.7	0.429	4	41000003
																		33.13	17.03	21.98	48.2	74.7	-6.4	0.0	5	41000003
4	3	19	20	21	0	0	W	OW	O	0	0	52.07	43.5	24.32	71.8	30.2	30.1	82.02	87.21	85.66	94.8	-1.6	6.4	0.43	6	41000004
																		30.66	17.1	2.67	48.3	65.3	52.9	0.0	7	41000004
5	3	25	26	27	0	0	W	YW	Y	0	0	71.92	80.69	32.04	91.9	-9.8	53.1	82.01	87.27	85.07	94.8	-1.8	6.9	0.473	8	41000005
																		66.66	73.8	6.99	88.8	-7.6	100.6	0.0	9	41000005
6	3	31	32	33	0	0	W	LW	L	0	0	32.29	44.66	29.33	72.6	-33.3	23.7	81.97	87.24	84.96	94.8	-1.8	6.9	0.48	10	41000006
																		9.71	20.83	6.41	52.7	-62.6	40.7	0.0	11	41000006
7	3	37	38	39	0	0	C	CN	N	0	0	8.52	10.95	21.14	39.5	-15.4	-20.0	19.77	27.96	70.59	59.8	-30.7	-42.2	0.542	12	41000007
																		2.98	3.09	3.08	20.4	0.6	1.8	0.0	13	41000007
8	3	43	44	45	0	0	V	VN	N	0	0	5.28	4.23	10.25	24.4	16.5	-21.2	8.21	5.47	23.25	28.0	31.2	-43.5	0.602	14	41000008
																		3.08	3.18	3.17	20.7	1.0	1.8	0.0	15	41000008
9	3	49	50	51	0	0	M	MN	N	0	0	12.27	8.03	9.32	34.0	36.9	-1.8	32.53	16.54	21.19	47.6	75.2	-6.1	0.515	16	41000009
																		2.84	2.94	2.96	19.8	0.7	1.6	0.0	17	41000009
10	3	55	56	57	0	0	O	ON	N	0	0	11.57	7.96	2.63	33.9	32.7	28.1	30.31	16.86	2.49	48.0	65.3	53.7	0.52	18	41000010
																		2.9	3.01	2.99	20.0	0.6	1.8	0.0	19	41000010
11	3	61	62	63	0	0	Y	YN	N	0	0	20.09	22.16	4.76	54.2	-4.7	50.5	66.79	74.09	7.44	88.9	-7.9	99.2	0.487	20	41000011
																		3.03	3.11	3.07	20.5	1.2	2.0	0.0	21	41000011
12	3	67	68	69	0	0	L	LN	N	0	0	5.36	8.94	4.48	35.8	-31.8	20.3	10.24	21.55	6.75	53.5	-61.8	40.7	0.513	22	41000012
																		3.14	3.22	3.18	20.9	1.3	2.0	0.0	23	41000012
13	3	209	210	211	0	0	W	C	N	0	0	18.97	27.01	69.41	58.9	-30.9	-42.8	81.9	87.16	84.9	94.8	-1.8	6.9	0.451	24	41000013
																		2.71	2.82	2.88	19.3	0.4	1.3	0.0	25	41000013
14	3	215	216	217	0	0	W	V	N	0	0	7.46	4.89	21.98	26.4	31.2	-44.1	81.87	87.12	84.91	94.7	-1.8	6.9	0.622	26	41000014
																		2.73	2.85	2.9	19.4	0.4	1.3	0.0	27	41000014
15	3	221	222	223	0	0	W	M	N	0	0	32.65	16.67	21.39	47.8	74.9	-6.1	81.94	87.19	85.03	94.8	-1.8	6.8	0.457	28	41000015
																		2.83	2.94	3.01	19.8	0.5	1.2	0.0	29	41000015
16	3	227	228	229	0	0	W	O	N	0	0	30.21	16.81	2.56	48.0	65.2	53.0	81.96	87.2	85.25	94.8	-1.7	6.7	0.464	30	41000016
																		2.84	2.95	3.07	19.8	0.6	0.9	0.0	31	41000016
17	3	233	234	235	0	0	W	Y	N	0	0	66.73	73.83	7.17	88.8	-7.5	99.9	82.0	87.31	84.7	94.8	-1.9	7.2	0.346	32	41000017
																		2.67	2.78	2.85	19.1	0.4	1.1	0.0	33	41000017
18	3	239	240	241	0	0	W	L	N	0	0	9.33	20.32	6.4	52.2	-63.2	39.8	81.86	87.15	84.58	94.8	-1.8	7.1	0.499	34	41000018
																		2.71	2.82	2.88	19.3	0.4	1.3	0.0	35	41000018
19	3	245	246	247	0	0	C	V	M	0	0	7.64	5.03	22.24	26.8	31.2	-43.9	19.13	27.14	69.68	59.1	-30.7	-42.8	0.506	36	41000019
																		32.77	16.79	21.38	47.9	74.7	-5.9	0.0	37	41000019
20	3	251	252	253	0	0	M	O	Y	0	0	30.19	16.79	2.54	47.9	65.2	53.1	32.74	16.74	21.47	47.9	74.9	-6.1	0.375	38	41000020
																		66.63	73.82	7.5	88.8	-7.7	98.7	0.0	39	41000020
21	3	257	258	259	0	0	Y	L	C	0	0	9.23	20.19	6.39	52.0	-63.4	39.5	66.64	73.75	7.32	88.8	-7.5	99.3	0.517	40	41000021
																		18.96	26.97	69.34	58.9	-30.9	-42.8	0.0	41	41000021
22	3	263	264	265	0	0	V	C	L	0	0	18.93	26.93	69.28	58.9	-30.9	-42.8	7.53	4.95	21.87	26.6	31.1	-43.6	0.517	42	41000022
																		9.3	20.22	6.42	52.0	-63.0	39.5	0.0	43	41000022
23	3	269	270	271	0	0	L	Y	O	0	0	66.61	73.78	7.37	88.8	-7.6	99.2	9.55	20.6	6.52	52.5	-62.8	39.8	0.509	44	41000023
																		30.05	16.67	2.5	47.8	65.4	53.1	0.0	45	41000023
24	3	275	276	277	0	0	O	M	V	0	0	32.75	16.75	21.34	47.9	74.8	-5.9	30.17	16.78	22.55	47.9	65.2	53.0	0.396	46	41000024
																		7.66	5.06	2.19	26.9	31.0	-43.7	0.0	47	41000024
25	5	89	90	91	92	93	W	Wc	CW	Cw	C	61.41	68.76	83.1	86.3	-9.0	-6.2	81.96	87.19	85.24	94.8	-1.7	6.7	0.206	50	41000025
																		42.84	51.17	77.72	76.7	-16.5	-18.7	0.428	49	41000025
																		42.84	51.17	77.72	76.7	-16.5	-18.7	0.643	1	41000025
																		19.11	27.16	69.75	59.1	-30.8	-42.8	0.0	51	41000025
26	5	99	100	101	102	103	W	Wv	CW	Vw	V	53.77	53.72	66.4	78.3	7.0	-7.0	81.67	86.84	85.23	94.6	-1.6	6.5	0.236	54	41000026
																		31.0	28.44	46.98	60.2	15.3	-19.5	0.474	53	41000026
																		31.0	28.44	46.98	60.2	15.3</				

see similar files: <http://130.149.60.45/~farbmetrik/XE38/XE38L0NA.TXT>
<http://www.ps.bam.de> or <http://130.149.60.45/~farbmetrik>

N	S	N1	N2	N3	N4	N5	NA1	NA2	NA3	NA4	NA5	X0	Y0	Z0	L*0	a*0	b*0	X1	Y1	Z1	L*1	a*1	b*1	VIM	no.	inr	%
%1000*(CIEXYZ & DV) for all colours (a) of experiment, iimp=114, colour difference pairs VA_LD114=VIK_ADJACENT, xchart=9, xchart3=1, xchart4=0 %																											
27	5	109	110	111	112	113	W	Wm	CW	Ow	O	68.55	64.01	66.22	83.9	17.4	2.9	82.01	87.21	85.53	94.8	-1.7	6.5	0.231	58	41000027	%
																		54.22	42.96	47.36	71.5	37.3	-0.6	0.469	57	41000027	%
																		54.22	42.96	47.36	71.5	37.3	-0.6	0.69	1	41000027	%
																		32.94	16.85	21.83	48.0	74.9	-6.5	0.0	59	41000027	%
28	5	119	120	121	122	123	W	Wo	CW	Ow	O	64.91	61.74	48.22	82.7	14.5	17.8	81.89	87.15	84.58	94.8	-1.8	7.1	0.223	62	41000028	%
																		51.43	42.5	23.75	71.2	31.5	29.9	0.452	61	41000028	%
																		51.43	42.5	23.75	71.2	31.5	29.9	0.678	1	41000028	%
																		30.15	16.71	2.43	47.9	65.5	53.7	0.0	63	41000028	%
29	5	129	130	131	132	133	W	Wy	CW	Yw	Y	75.93	83.22	55.28	93.1	-6.3	28.5	81.99	87.23	85.07	94.8	-1.7	6.9	0.175	65	41000029	%
																		72.08	80.77	32.95	92.0	-9.6	51.9	0.488	66	41000029	%
																		72.08	80.77	32.95	92.0	-9.6	51.9	0.732	1	41000029	%
																		66.78	74.0	7.58	88.9	-7.7	98.6	0.0	67	41000029	%
30	5	139	140	141	142	143	W	Wl	CW	Lw	L	54.95	65.26	54.93	84.6	-17.1	14.2	81.89	87.08	85.31	94.7	-1.7	6.6	0.232	70	41000030	%
																		32.6	44.92	30.62	72.8	-32.9	22.1	0.471	69	41000030	%
																		32.6	44.92	30.62	72.8	-32.9	22.1	0.698	1	41000030	%
																		9.86	21.11	6.73	53.0	-62.7	39.9	0.0	71	41000030	%
31	5	149	150	151	152	153	C	Cn	CN	Nc	N	12.81	17.46	40.6	48.8	-23.0	-32.1	19.27	27.35	69.61	59.3	-30.8	-42.4	0.268	74	41000031	%
																		8.05	10.39	20.66	38.5	-15.5	-20.8	0.502	73	41000031	%
																		8.05	10.39	20.66	38.5	-15.5	-20.8	0.748	1	41000031	%
																		2.73	2.84	2.93	19.4	0.5	1.0	0.0	75	41000031	%
32	5	159	160	161	162	163	V	Vn	VN	Nv	N	6.16	4.41	15.59	25.0	24.1	-33.9	7.63	5.0	22.14	26.7	31.4	-43.9	0.267	78	41000032	%
																		4.84	3.85	9.87	23.1	16.4	-22.2	0.53	77	41000032	%
																		4.84	3.85	9.87	23.1	16.4	-22.2	0.796	1	41000032	%
																		2.82	2.93	2.97	19.7	0.7	1.4	0.0	79	41000032	%
33	5	169	170	171	172	173	M	Mn	MN	Nm	N	20.06	11.21	14.29	39.9	56.6	-5.2	32.8	16.75	21.46	47.9	75.0	-6.1	0.268	82	41000033	%
																		12.45	8.16	9.7	34.3	37.0	-2.5	0.5	81	41000033	%
																		12.45	8.16	9.7	34.3	37.0	-2.5	0.723	1	41000033	%
																		2.95	3.05	3.07	20.2	0.8	1.6	0.0	83	41000033	%
34	5	179	180	181	182	183	O	On	ON	No	N	18.78	11.34	2.51	40.1	49.1	39.9	30.13	16.7	2.46	47.8	65.5	53.5	0.262	86	41000034	%
																		11.28	7.75	2.62	33.4	32.5	27.4	0.49	85	41000034	%
																		11.28	7.75	2.62	33.4	32.5	27.4	0.719	1	41000034	%
																		2.74	2.86	2.95	19.5	0.3	1.1	0.0	87	41000034	%
35	5	189	190	191	192	193	Y	Yn	YN	Ny	N	39.43	44.28	6.44	72.4	-8.1	74.5	66.65	73.85	7.56	88.8	-7.7	98.5	0.248	90	41000035	%
																		19.74	21.83	4.83	53.8	-5.0	49.6	0.492	89	41000035	%
																		19.74	21.83	4.83	53.8	-5.0	49.6	0.705	1	41000035	%
																		2.81	2.92	2.97	19.7	0.5	1.4	0.0	91	41000035	%
36	5	199	200	201	202	203	L	Ln	LN	Nl	N	7.15	13.85	5.36	44.0	-47.5	30.2	9.8	21.03	6.73	52.9	-62.9	39.8	0.258	94	41000036	%
																		5.09	8.6	4.49	35.2	-32.2	19.1	0.5	93	41000036	%
																		5.09	8.6	4.49	35.2	-32.2	19.1	0.722	1	41000036	%
																		2.99	3.1	3.12	20.4	0.7	1.6	0.0	95	41000036	%
37	3	281	282	283	0	0	C	CV	V	0	0	12.12	12.75	40.67	42.3	0.0	-43.3	19.06	27.08	69.26	59.0	-30.8	-42.5	0.462	96	41000037	%
																		7.37	4.81	21.6	26.2	31.3	-43.8	0.0	97	41000037	%
																		7.37	4.81	21.6	26.2	31.3	-43.8	0.554	98	41000038	%
38	3	283	284	285	0	0	V	MV	M	0	0	16.05	8.94	20.74	35.8	52.7	-25.6	32.5	16.55	21.02	47.6	75.1	-5.7	0.0	99	41000038	%
																		32.47	16.54	20.95	47.6	75.0	-5.6	0.565	100	41000039	%
																		30.15	16.75	2.52	47.9	65.3	53.2	0.0	101	41000039	%
39	3	291	292	293	0	0	M	MO	O	0	0	31.56	16.8	8.9	48.0	70.3	23.5	32.47	16.54	20.95	47.6	75.0	-5.6	0.565	100	41000039	%
																		30.15	16.75	2.52	47.9	65.3	53.2	0.46	102	41000040	%
																		30.15	16.75	2.52	47.9	65.3	53.2	0.46	102	41000040	%
																		66.7	73.9	7.49	88.8	-7.7	98.8	0.0	103	41000040	%
40	3	293	294	295	0	0	O	YO	Y	0	0	46.53	39.4	4.83	69.0	27.5	75.8	66.7	73.9	7.49	88.8	-7.7	98.8	0.0	103	41000040	%
																		66.7	73.9	7.49	88.8	-7.7	98.8	0.438	104	41000041	%
41	3	301	302	303	0	0	Y	YL	L	0	0	28.03	40.71	7.17	69.9	-37.7	67.4	66.7	73.9	7.49	88.8	-7.7	98.8	0.438	104	41000041	%
																		9.66	20.82	6.75	52.7	-62.9	39.3	0.0	105	41000041	%

TUB registration: 20140801-XE38/XE38L0NA.TXT /PS
 application for measurement of display or printer output, no separation
 TUB material: code=rh4ta

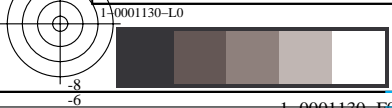
see similar files: http://130.149.60.45/~farbmetrik/XE38/XE38.HTM
technical information: http://www.ps.bam.de or http://130.149.60.45/~farbmetrik

N	S	N1	N2	N3	N4	N5	NA1	NA2	NA3	NA4	NA5	X0	Y0	Z0	L*0	a*0	b*0	X1	Y1	Z1	L*1	a*1	b*1	VIM	no.	inr
1	3	1	2	3	0	0	W	CW	C	0	0	43.07	51.42	77.39	76.9	-16.5	-18.2	81.89	87.15	84.89	94.8	-1.8	6.9	0.523	0	42000001
																		19.34	27.47	69.83	59.4	-30.9	-42.4	0.0	1	42000001
2	3	7	8	9	0	0	W	VW	V	0	0	30.85	28.28	46.11	60.1	15.4	-18.9	81.86	87.13	84.76	94.7	-1.8	7.0	0.454	2	42000002
																		7.8	5.15	22.36	27.1	31.2	-43.5	0.0	3	42000002
3	3	13	14	15	0	0	W	MW	M	0	0	53.92	42.7	46.58	71.3	37.3	0.0	81.95	87.17	85.29	94.8	-1.7	6.7	0.45	4	42000003
																		33.13	17.03	21.98	48.2	74.7	-6.4	0.0	5	42000003
4	3	19	20	21	0	0	W	OW	O	0	0	52.07	43.5	24.32	71.8	30.2	30.1	82.02	87.21	85.66	94.8	-1.6	6.4	0.4	6	42000004
																		30.66	17.1	2.67	48.3	65.3	52.9	0.0	7	42000004
5	3	25	26	27	0	0	W	YW	Y	0	0	71.92	80.69	32.04	91.9	-9.8	53.1	82.01	87.27	85.07	94.8	-1.8	6.9	0.429	8	42000005
																		66.66	73.8	6.99	88.8	-7.6	100.6	0.0	9	42000005
6	3	31	32	33	0	0	W	LW	L	0	0	32.29	44.66	29.33	72.6	-33.3	23.7	81.97	87.24	84.96	94.8	-1.8	6.9	0.501	10	42000006
																		9.71	20.83	6.41	52.7	-62.6	40.7	0.0	11	42000006
7	3	37	38	39	0	0	C	CN	N	0	0	8.52	10.95	21.14	39.5	-15.4	-20.0	19.77	27.96	70.59	59.8	-30.7	-42.2	0.541	12	42000007
																		2.98	3.09	3.08	20.4	0.6	1.8	0.0	13	42000007
8	3	43	44	45	0	0	V	VN	N	0	0	5.28	4.23	10.25	24.4	16.5	-21.2	8.21	5.47	23.25	28.0	31.2	-43.5	0.497	14	42000008
																		3.08	3.18	3.17	20.7	1.0	1.8	0.0	15	42000008
9	3	49	50	51	0	0	M	MN	N	0	0	12.27	8.03	9.32	34.0	36.9	-1.8	32.53	16.54	21.19	47.6	75.2	-6.1	0.526	16	42000009
																		2.84	2.94	2.96	19.8	0.7	1.6	0.0	17	42000009
10	3	55	56	57	0	0	O	ON	N	0	0	11.57	7.96	2.63	33.9	32.7	28.1	30.31	16.86	2.49	48.0	65.3	53.7	0.529	18	42000010
																		2.9	3.01	2.99	20.0	0.6	1.8	0.0	19	42000010
11	3	61	62	63	0	0	Y	YN	N	0	0	20.09	22.16	4.76	54.2	-4.7	50.5	66.79	74.09	7.44	88.9	-7.9	99.2	0.452	20	42000011
																		3.03	3.11	3.07	20.5	1.2	2.0	0.0	21	42000011
12	3	67	68	69	0	0	L	LN	N	0	0	5.36	8.94	4.48	35.8	-31.8	20.3	10.24	21.55	6.75	53.5	-61.8	40.7	0.438	22	42000012
																		3.14	3.22	3.18	20.9	1.3	2.0	0.0	23	42000012
13	3	209	210	211	0	0	W	C	N	0	0	18.97	27.01	69.41	58.9	-30.9	-42.8	81.9	87.16	84.9	94.8	-1.8	6.9	0.454	24	42000013
																		2.71	2.82	2.88	19.3	0.4	1.3	0.0	25	42000013
14	3	215	216	217	0	0	W	V	N	0	0	7.46	4.89	21.98	26.4	31.2	-44.1	81.87	87.12	84.91	94.7	-1.8	6.9	0.714	26	42000014
																		2.73	2.85	2.9	19.4	0.4	1.3	0.0	27	42000014
15	3	221	222	223	0	0	W	M	N	0	0	32.65	16.67	21.39	47.8	74.9	-6.1	81.94	87.19	85.03	94.8	-1.8	6.8	0.435	28	42000015
																		2.83	2.94	3.01	19.8	0.5	1.2	0.0	29	42000015
16	3	227	228	229	0	0	W	O	N	0	0	30.21	16.81	2.56	48.0	65.2	53.0	81.96	87.2	85.25	94.8	-1.7	6.7	0.479	30	42000016
																		2.84	2.95	3.07	19.8	0.6	0.9	0.0	31	42000016
17	3	233	234	235	0	0	W	Y	N	0	0	66.73	73.83	7.17	88.8	-7.5	99.9	82.0	87.31	84.7	94.8	-1.9	7.2	0.304	32	42000017
																		2.67	2.78	2.85	19.1	0.4	1.1	0.0	33	42000017
18	3	239	240	241	0	0	W	L	N	0	0	9.33	20.32	6.4	52.2	-63.2	39.8	81.86	87.15	84.58	94.8	-1.8	7.1	0.505	34	42000018
																		2.71	2.82	2.88	19.3	0.4	1.3	0.0	35	42000018
19	3	245	246	247	0	0	C	V	M	0	0	7.64	5.03	22.24	26.8	31.2	-43.9	19.13	27.14	69.68	59.1	-30.7	-42.8	0.479	36	42000019
																		32.77	16.79	21.38	47.9	74.7	-5.9	0.0	37	42000019
20	3	251	252	253	0	0	M	O	Y	0	0	30.19	16.79	2.54	47.9	65.2	53.1	32.74	16.74	21.47	47.9	74.9	-6.1	0.329	38	42000020
																		66.63	73.82	7.5	88.8	-7.7	98.7	0.0	39	42000020
21	3	257	258	259	0	0	Y	L	C	0	0	9.23	20.19	6.39	52.0	-63.4	39.5	66.64	73.75	7.32	88.8	-7.5	99.3	0.604	40	42000021
																		18.96	26.97	69.34	58.9	-30.9	-42.8	0.0	41	42000021
22	3	263	264	265	0	0	V	C	L	0	0	18.93	26.93	69.28	58.9	-30.9	-42.8	7.53	4.95	21.87	26.6	31.1	-43.6	0.587	42	42000022
																		9.3	20.22	6.42	52.0	-63.0	39.5	0.0	43	42000022
23	3	269	270	271	0	0	L	Y	O	0	0	66.61	73.78	7.37	88.8	-7.6	99.2	9.55	20.6	6.52	52.5	-62.8	39.8	0.552	44	42000023
																		30.05	16.67	2.5	47.8	65.4	53.1	0.0	45	42000023
24	3	275	276	277	0	0	O	M	V	0	0	32.75	16.75	21.34	47.9	74.8	-5.9	30.17	16.78	22.55	47.9	65.2	53.0	0.347	46	42000024
																		7.66	5.06	2.19	26.9	31.0	-43.7	0.0	47	42000024
25	5	89	90	91	92	93	W	Wc	CW	Cw	C	61.41	68.76	83.1	86.3	-9.0	-6.2	81.96	87.19	85.24	94.8	-1.7	6.7	0.22	50	42000025
																		42.84	51.17	77.72	76.7	-16.5	-18.7	0.455	49	42000025
																		42.84	51.17	77.72	76.7	-16.5	-18.7	0.664	1	42000025
																		19.11	27.16	69.75	59.1	-30.8	-42.8	0.0	51	42000025
26	5	99	100	101	102	103	W	Wv	CW	Vw	V	53.77	53.72	66.4	78.3	7.0	-7.0	81.67	86.84	85.23	94.6	-1.6	6.5	0.232	54	42000026
																		31.0	28.44	46.98	60.2	15.3	-19.5	0.444	53	42000026
																		31.0	28.44	46.98	60.2	15.				

see similar files: <http://130.149.60.45/~farbmetrik/XE38/XE38L0NA.TXT>
 technical information: <http://www.ps.bam.de> or <http://130.149.60.45/~farbmetrik>

N	S	N1	N2	N3	N4	N5	NA1	NA2	NA3	NA4	NA5	X0	Y0	Z0	L*0	a*0	b*0	X1	Y1	Z1	L*1	a*1	b*1	VIM	no.	inr	%
%1000*(CIEXYZ & DV) for all colours (a) of experiment, iimp=114, colour difference pairs KA_LD114=KIT_ADJACENT, xchart=11, xchart3=1, xchart4=1 %																											
27	5	109	110	111	112	113	W	Wm	CW	Mw	M	68.55	64.01	66.22	83.9	17.4	2.9	82.01	87.21	85.53	94.8	-1.7	6.5	0.255	58	42000027	%
54.22 42.96 47.36 71.5 37.3 -0.6 0.473 57 42000027 % 54.22 42.96 47.36 71.5 37.3 -0.6 0.708 1 42000027 % 32.94 16.85 21.83 48.0 74.9 -6.5 0.0 59 42000027 % 81.89 87.15 84.58 94.8 -1.8 7.1 0.226 62 42000028 % 51.43 42.5 23.75 71.2 31.5 29.9 0.447 61 42000028 % 51.43 42.5 23.75 71.2 31.5 29.9 0.689 1 42000028 % 30.15 16.71 2.43 47.9 65.5 53.7 0.0 63 42000028 % 81.99 87.23 85.07 94.8 -1.7 6.9 0.235 66 42000029 % 72.08 80.77 32.95 92.0 -9.6 51.9 0.46 65 42000029 % 72.08 80.77 32.95 92.0 -9.6 51.9 0.718 1 42000029 % 66.78 74.0 7.58 88.9 -7.7 98.6 0.0 67 42000029 % 81.89 87.08 85.31 94.7 -1.7 6.6 0.251 70 42000030 % 32.6 44.92 30.62 72.8 -32.9 22.1 0.463 69 42000030 % 32.6 44.92 30.62 72.8 -32.9 22.1 0.695 1 42000030 % 9.86 21.11 6.73 53.0 -62.7 39.9 0.0 71 42000030 % 19.27 27.35 69.61 59.3 -30.8 -42.4 0.285 74 42000031 % 8.05 10.39 20.66 38.5 -15.5 -20.8 0.511 73 42000031 % 8.05 10.39 20.66 38.5 -15.5 -20.8 0.763 1 42000031 % 2.73 2.84 2.93 19.4 0.5 1.0 0.0 75 42000031 % 7.63 5.0 22.14 26.7 31.4 -43.9 0.217 78 42000032 % 4.84 3.85 9.87 23.1 16.4 -22.2 0.482 77 42000032 % 4.84 3.85 9.87 23.1 16.4 -22.2 0.785 1 42000032 % 2.82 2.93 2.97 19.7 0.7 1.4 0.0 79 42000032 % 32.8 16.75 21.46 47.9 75.0 -6.1 0.291 82 42000033 % 12.45 8.16 9.7 34.3 37.0 -2.5 0.521 81 42000033 % 12.45 8.16 9.7 34.3 37.0 -2.5 0.714 1 42000033 % 2.95 3.05 3.07 20.2 0.8 1.6 0.0 83 42000033 % 30.13 16.7 2.46 47.8 65.5 53.5 0.284 86 42000034 % 11.28 7.75 2.62 33.4 32.5 27.4 0.482 85 42000034 % 11.28 7.75 2.62 33.4 32.5 27.4 0.72 1 42000034 % 2.74 2.86 2.95 19.5 0.3 1.1 0.0 87 42000034 % 35 5 189 190 191 192 193 Y Yn YN Ny N 39.43 44.28 6.44 72.4 -8.1 74.5 66.65 73.85 7.56 88.8 -7.7 98.5 0.273 90 42000035 % 19.74 21.83 4.83 53.8 -5.0 49.6 0.491 89 42000035 % 19.74 21.83 4.83 53.8 -5.0 49.6 0.679 1 42000035 % 2.81 2.92 2.97 19.7 0.5 1.4 0.0 91 42000035 % 36 5 199 200 201 202 203 L Ln LN Nl N 7.15 13.85 5.36 44.0 -47.5 30.2 9.8 21.03 6.73 52.9 -62.9 39.8 0.27 94 42000036 % 5.09 8.6 4.49 35.2 -32.2 19.1 0.735 1 42000036 % 5.09 8.6 4.49 35.2 -32.2 19.1 0.735 1 42000036 % 2.99 3.1 3.12 20.4 0.7 1.6 0.0 95 42000036 % 37 3 281 282 283 0 0 C CV V 0 0 12.12 12.75 40.67 42.3 0.0 -43.3 19.06 27.08 69.26 59.0 -30.8 -42.5 0.476 96 42000037 % 7.37 4.81 21.6 26.2 31.3 -43.8 0.0 97 42000037 % 38 3 283 284 285 0 0 V MV M 0 0 16.05 8.94 20.74 35.8 52.7 -25.6 7.37 4.81 21.6 26.2 31.3 -43.8 0.526 98 42000038 % 32.5 16.55 21.02 47.6 75.1 -5.7 0.0 99 42000038 % 39 3 291 292 293 0 0 M MO O 0 0 31.56 16.8 8.9 48.0 70.3 23.5 32.47 16.54 20.95 47.6 75.0 -5.6 0.607 100 42000039 % 30.15 16.75 2.52 47.9 65.3 53.2 0.0 101 42000039 % 40 3 293 294 295 0 0 O YO Y 0 0 46.53 39.4 4.83 69.0 27.5 75.8 30.15 16.75 2.52 47.9 65.3 53.2 0.5 102 42000040 % 66.7 73.9 7.49 88.8 -7.7 98.8 0.0 103 42000040 % 41 3 301 302 303 0 0 Y YL L 0 0 28.03 40.71 7.17 69.9 -37.7 67.4 66.7 73.92 7.6 88.8 -7.7 98.4 0.525 104 42000041 % 9.66 20.82 6.75 52.7 -62.9 39.3 0.0 105 42000041 %																											

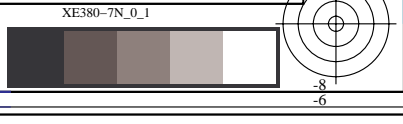
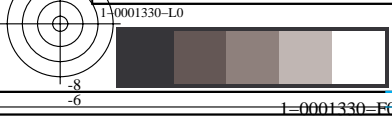
TUB registration: 20140801-XE38/XE38L0NA.TXT /.PS
 application for measurement of display or printer output, no separation
 TUB material: code=rh4ta



see similar files: <http://130.149.60.45/~farbmetrik/XE38/XE38L0NA.TXT> /PS
technical information: <http://www.ps.bam.de> or <http://130.149.60.45/~farbmetrik>

N	S	N1	N2	N3	N4	N5	NA1	NA2	NA3	NA4	NA5	X0	Y0	Z0	L*0	a*0	b*0	X1	Y1	Z1	L*1	a*1	b*1	VIM	no.	inr	%
27	5	114	115	116	117	118	W	Wm	CW	Mw	M	68.48	63.94	66.14	83.9	17.5	2.9	82.1	87.32	85.54	94.8	-1.7	6.6	0.223	58	43000027	%
																		54.23	42.93	47.4	71.5	37.4	-0.6	0.473	57	43000027	%
																		54.23	42.93	47.4	71.5	37.4	-0.6	0.691	1	43000027	%
																		33.03	16.93	21.84	48.1	74.9	-6.4	0.0	59	43000027	%
28	5	124	125	126	127	128	W	Wo	CW	Ow	O	64.83	61.63	48.41	82.7	14.6	17.5	81.81	87.07	85.02	94.7	-1.8	6.8	0.244	62	43000028	%
																		51.47	42.56	23.62	71.2	31.4	30.2	0.47	61	43000028	%
																		51.47	42.56	23.62	71.2	31.4	30.2	0.688	1	43000028	%
																		30.0	16.64	2.51	47.8	65.3	53.0	0.0	63	43000028	%
29	5	134	135	136	137	138	W	Wy	CW	Yw	Y	76.36	84.01	54.88	93.4	-6.9	29.5	81.83	87.02	85.04	94.7	-1.7	6.7	0.241	66	43000029	%
																		71.58	80.17	30.74	91.7	-9.5	54.5	0.508	65	43000029	%
																		71.58	80.17	30.74	91.7	-9.5	54.5	0.811	1	43000029	%
																		66.03	73.0	7.06	88.4	-7.3	99.7	0.0	67	43000029	%
30	5	144	145	146	147	148	W	Wl	CW	Lw	L	54.95	65.24	54.93	84.6	-17.1	14.2	81.98	87.2	85.39	94.8	-1.7	6.6	0.217	70	43000030	%
																		32.57	44.85	30.76	72.7	-32.8	21.8	0.451	69	43000030	%
																		32.57	44.85	30.76	72.7	-32.8	21.8	0.697	1	43000030	%
																		9.88	21.1	6.79	53.0	-62.5	39.7	0.0	71	43000030	%
31	5	154	155	156	157	158	C	Cn	CN	Nc	N	12.92	17.6	40.75	49.0	-23.1	-32.0	19.26	27.33	69.8	59.2	-30.8	-42.6	0.276	74	43000031	%
																		8.1	10.44	21.02	38.6	-15.4	-21.3	0.505	73	43000031	%
																		8.1	10.44	21.02	38.6	-15.4	-21.3	0.758	1	43000031	%
																		2.75	2.87	2.96	19.5	0.4	1.0	0.0	75	43000031	%
32	5	164	165	166	167	168	V	Vn	VN	Nv	N	6.07	4.26	15.28	24.5	25.2	-34.0	7.69	4.9	21.89	26.4	33.2	-43.9	0.17	78	43000032	%
																		4.69	3.66	9.65	22.5	17.3	-22.7	0.492	77	43000032	%
																		4.69	3.66	9.65	22.5	17.3	-22.7	0.833	1	43000032	%
																		2.97	3.04	2.94	20.2	1.3	2.4	0.0	79	43000032	%
33	5	174	175	176	177	178	M	Mn	MN	Nm	N	20.09	11.25	14.42	40.0	56.4	-5.3	32.96	16.88	21.78	48.1	74.9	-6.4	0.282	82	43000033	%
																		12.49	8.17	9.82	34.3	37.2	-2.9	0.5	81	43000033	%
																		12.49	8.17	9.82	34.3	37.2	-2.9	0.732	1	43000033	%
																		2.96	3.07	3.14	20.3	0.7	1.3	0.0	83	43000033	%
34	5	184	185	186	187	188	O	On	ON	No	N	18.78	11.36	2.55	40.1	49.0	39.6	30.09	16.71	2.48	47.8	65.3	53.4	0.282	86	43000034	%
																		11.28	7.74	2.61	33.4	32.6	27.5	0.482	85	43000034	%
																		11.28	7.74	2.61	33.4	32.6	27.5	0.71	1	43000034	%
																		2.77	2.88	2.97	19.5	0.7	1.1	0.0	87	43000034	%
35	5	194	195	196	197	198	Y	Yn	YN	Ny	N	39.61	44.43	6.37	72.5	-8.0	74.9	65.87	72.76	6.94	88.3	-7.2	99.9	0.299	90	43000035	%
																		19.92	22.01	4.66	54.0	-4.8	50.7	0.5	89	43000035	%
																		19.92	22.01	4.66	54.0	-4.8	50.7	0.702	1	43000035	%
																		2.91	3.0	2.98	20.0	1.0	1.8	0.0	91	43000035	%
36	5	204	205	206	207	208	L	Ln	LN	Nl	N	7.13	13.81	5.32	43.9	-47.5	30.2	9.77	20.96	6.66	52.9	-62.7	39.9	0.272	94	43000036	%
																		5.07	8.54	4.42	35.0	-31.9	19.3	0.451	93	43000036	%
																		5.07	8.54	4.42	35.0	-31.9	19.3	0.704	1	43000036	%
																		2.95	3.06	3.08	20.2	0.7	1.6	0.0	95	43000036	%
37	3	286	287	288	0	0	C	CV	V	0	0	12.22	12.84	40.95	42.5	0.1	-43.4	19.08	27.11	69.59	59.0	-30.8	-42.8	0.511	96	43000037	%
																		7.46	4.9	21.88	26.4	31.1	-43.9	0.0	97	43000037	%
38	3	288	289	290	0	0	V	MV	M	0	0	16.31	9.08	21.19	36.1	53.0	-25.9	7.46	4.9	21.88	26.4	31.1	-43.9	0.541	98	43000038	%
																		32.55	16.64	21.22	47.8	74.7	-5.9	0.0	99	43000038	%
39	3	296	297	298	0	0	M	MO	O	0	0	31.69	16.9	8.99	48.1	70.2	23.4	32.51	16.56	21.12	47.7	75.0	-5.9	0.594	100	43000039	%
																		30.21	16.78	2.54	47.9	65.4	53.1	0.0	101	43000039	%
40	3	298	299	300	0	0	O	YO	Y	0	0	46.51	39.35	4.9	69.0	27.6	75.4	30.21	16.78	2.54	47.9	65.4	53.1	0.47	102	43000040	%
																		66.88	74.05	7.6	88.9	-7.6	98.6	0.0	103	43000040	%
41	3	306	307	308	0	0	Y	YL	L	0	0	27.96	40.59	7.13	69.8	-37.6	67.4	66.39	73.52	7.53	88.6	-7.6	98.4	0.528	104	43000041	%
																		9.64	20.74	6.84	52.6	-62.8	38.8	0.0	105	43000041	%

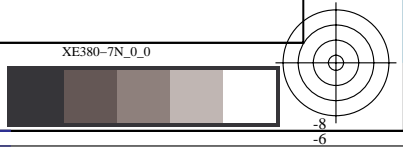
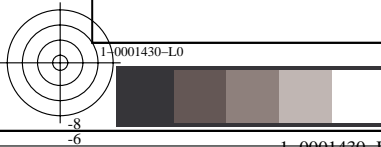
TUB registration: 20140801-XE38/XE38L0NA.TXT /PS
application for measurement of display or printer output, no separation
TUB material: code=rh4ta



see similar files: http://130.149.60.45/~farbmetrik/XE38/XE38.HTM
technical information: http://www.ps.bam.de or http://130.149.60.45/~farbmetrik

N	S	N1	N2	N3	N4	N5	NA1	NA2	NA3	NA4	NA5	X0	Y0	Z0	L*0	a*0	b*0	X1	Y1	Z1	L*1	a*1	b*1	VIM	no.	inr	%
1	3	1	2	3	0	0	W	CW	C	0	0	37.41	46.32	59.43	73.7	-19.6	-17.2	70.18	75.43	60.81	89.5	-2.2	8.7	0.505	0	44000001	%
																		17.21	26.57	53.54	58.5	-37.9	-37.5	0.0	1	44000001	%
2	3	7	8	9	0	0	W	VW	V	0	0	27.07	26.22	37.48	58.2	9.6	-19.5	70.17	75.41	60.69	89.5	-2.2	8.8	0.527	2	44000002	%
																		6.84	5.49	17.84	28.1	18.3	-39.1	0.0	3	44000002	%
3	3	13	14	15	0	0	W	MW	M	0	0	46.93	38.26	36.66	68.2	33.0	-1.2	70.23	75.46	60.54	89.6	-2.2	8.9	0.508	4	44000003	%
																		29.15	16.39	18.21	47.5	64.2	-6.5	0.0	5	44000003	%
4	3	19	20	21	0	0	W	OW	O	0	0	45.48	38.09	19.72	68.0	29.4	25.8	70.67	75.88	61.1	89.8	-2.1	8.8	0.465	6	44000004	%
																		27.37	16.11	3.05	47.1	58.7	44.8	0.0	7	44000004	%
5	3	25	26	27	0	0	W	YW	Y	0	0	60.34	64.29	20.89	84.1	-0.8	51.2	70.21	75.53	60.29	89.6	-2.3	9.2	0.565	8	44000005	%
																		59.91	63.78	6.8	83.8	-0.7	88.5	0.0	9	44000005	%
6	3	31	32	33	0	0	W	LW	L	0	0	29.12	39.62	23.33	69.2	-29.4	20.9	70.55	75.88	60.81	89.8	-2.3	9.0	0.512	10	44000006	%
																		9.49	18.44	5.75	50.0	-52.0	34.8	0.0	11	44000006	%
7	3	37	38	39	0	0	C	CN	N	0	0	10.47	7.63	3.05	33.2	28.0	20.8	26.97	15.82	3.0	46.7	58.8	44.5	0.438	12	44000007	%
																		3.27	3.5	3.21	21.9	-0.4	0.3	0.0	13	44000007	%
8	3	43	44	45	0	0	V	VN	N	0	0	4.65	4.25	8.4	24.5	8.6	-19.7	6.92	5.48	18.33	28.1	19.3	-40.2	0.484	14	44000008	%
																		3.32	3.55	3.27	22.1	-0.5	0.3	0.0	15	44000008	%
9	3	49	50	51	0	0	M	MN	N	0	0	10.91	7.74	8.17	33.4	30.4	-3.5	28.83	16.04	17.9	47.0	64.9	-6.6	0.487	16	44000009	%
																		3.27	3.49	3.22	21.9	-0.3	0.2	0.0	17	44000009	%
10	3	55	56	57	0	0	O	ON	N	0	0	10.47	7.63	3.05	33.2	28.0	20.8	26.97	15.82	3.0	46.7	58.8	44.5	0.48	18	44000010	%
																		3.27	3.5	3.21	21.9	-0.4	0.3	0.0	19	44000010	%
11	3	61	62	63	0	0	Y	YN	N	0	0	18.22	19.56	4.76	51.3	-1.3	41.8	59.87	63.66	7.18	83.7	-0.5	86.9	0.467	20	44000011	%
																		3.36	3.59	3.27	22.3	-0.5	0.5	0.0	21	44000011	%
12	3	67	68	69	0	0	L	LN	N	0	0	5.41	8.32	4.35	34.6	-25.5	15.3	9.64	18.38	6.24	49.9	-50.5	32.5	0.488	22	44000012	%
																		3.3	3.53	3.23	22.0	-0.5	0.3	0.0	23	44000012	%
13	3	209	210	211	0	0	W	C	N	0	0	17.85	27.5	53.88	59.4	-38.1	-36.4	71.21	76.6	61.16	90.1	-2.3	9.3	0.448	24	44000013	%
																		3.43	3.66	3.31	22.5	-0.3	0.6	0.0	25	44000013	%
14	3	215	216	217	0	0	W	V	N	0	0	7.2	5.75	18.39	28.8	19.0	-39.1	71.02	76.37	60.91	90.0	-2.3	9.3	0.591	26	44000014	%
																		3.46	3.68	3.33	22.6	-0.2	0.7	0.0	27	44000014	%
15	3	221	222	223	0	0	W	M	N	0	0	29.71	16.78	18.81	48.0	64.2	-6.9	70.75	76.04	60.81	89.8	-2.2	9.2	0.433	28	44000015	%
																		3.5	3.71	3.31	22.7	0.0	0.9	0.0	29	44000015	%
16	3	227	228	229	0	0	W	O	N	0	0	27.66	16.38	3.19	47.4	58.4	44.4	71.0	76.32	61.09	90.0	-2.2	9.1	0.475	30	44000016	%
																		3.51	3.73	3.36	22.8	-0.1	0.7	0.0	31	44000016	%
17	3	233	234	235	0	0	W	Y	N	0	0	60.73	64.72	7.05	84.3	-0.9	88.4	71.22	76.6	60.9	90.1	-2.3	9.5	0.367	32	44000017	%
																		3.41	3.63	3.22	22.4	-0.2	1.1	0.0	33	44000017	%
18	3	239	240	241	0	0	W	L	N	0	0	10.04	19.13	5.95	50.8	-51.1	35.3	71.0	76.38	60.85	90.0	-2.3	9.4	0.442	34	44000018	%
																		3.43	3.66	3.3	22.5	-0.4	0.7	0.0	35	44000018	%
19	3	245	246	247	0	0	C	V	M	0	0	7.34	5.86	18.46	29.0	19.1	-38.7	17.93	27.56	53.72	59.4	-37.9	-36.1	0.51	36	44000019	%
																		29.56	16.74	18.53	47.9	63.8	-6.4	0.0	37	44000019	%
20	3	251	252	253	0	0	M	O	Y	0	0	27.65	16.36	3.09	47.4	58.5	45.0	60.76	64.81	7.18	84.3	-1.0	88.0	0.343	38	44000020	%
																		29.87	16.86	18.92	48.0	64.4	-6.9	0.0	39	44000020	%
21	3	257	258	259	0	0	Y	L	C	0	0	9.96	18.96	5.85	50.6	-50.9	35.4	60.43	64.34	7.08	84.1	-0.7	87.9	0.508	40	44000021	%
																		17.54	27.14	52.95	59.1	-38.4	-36.0	0.0	41	44000021	%
22	3	263	264	265	0	0	V	C	L	0	0	17.81	27.46	53.88	59.4	-38.2	-36.4	7.17	5.69	18.36	28.6	19.4	-39.3	0.535	42	44000022	%
																		10.04	19.18	5.88	50.9	-51.4	35.7	0.0	43	44000022	%
23	3	269	270	271	0	0	L	Y	O	0	0	60.28	64.28	7.16	84.1	-1.0	87.5	10.17	19.39	5.91	51.1	-51.4	36.0	0.526	44	44000023	%
																		27.51	16.28	3.09	47.3	58.4	44.9	0.0	45	44000023	%
24	3	275	276	277	0	0	O	M	V	0	0	29.71	16.77	18.78	47.9	64.3	-6.8	27.66	16.36	3.17	47.4	58.5	44.5	0.559	46	44000024	%
																		7.34	5.82	18.64	28.9	19.6	-39.3	0.0	47	44000024	%
25	4	89	90	91	0	0	W	Wc	CW	0	0	52.71	60.24	60.72	81.9	-10.5	-4.3	70.97	76.26	61.51	89.9	-2.2	8.7	0.498	48	44000025	%
																		36.36	45.16	56.82	73.0	-19.8	-16.0	0.0	49	44000025	%
26	4	99	100	101	0	0	W	Wv	CW	0	0	45.94	47.12	48.62	74.2	4.1	-5.2	70.48	75.71	61.07	89.7	-2.1	8.6	0.483	50	44000026	%
																		26.63	25.81	36.12	57.8	9.5	-18.3	0.0	51	44000026	%

TUB registration: 20140801-XE38/XE38L0NA.TXT /PS
application for measurement of display or printer output, no separation
TUB material: code=rh4ta



see similar files: <http://130.149.60.45/~farbmetrik/XE38/XE38L0NA.TXT>
 technical information: <http://www.ps.bam.de> or <http://130.149.60.45/~farbmetrik>

N	S	N1	N2	N3	N4	N5	NA1	NA2	NA3	NA4	NA5	X0	Y0	Z0	L*0	a*0	b*0	X1	Y1	Z1	L*1	a*1	b*1	VIM	no.	inr	%
%1000*(CIEXYZ & DV) for all colours (a) of experiment, iimp=98, colour difference pairs MA_LD098=MEL_ADJACENT, xchart=15, xchart3=1, xchart4=3 %																											
27	4	109	110	111	0	0	W	Wm	CW	0	0	58.89	55.88	48.08	79.5	15.3	4.4	70.61	75.84	61.31	89.7	-2.1	8.5	0.505	52	44000027	%
																		46.49	37.94	35.34	67.9	32.8	0.1	0.0	53	44000027	%
28	4	119	120	121	0	0	W	Wo	CW	0	0	56.18	53.67	34.5	78.2	14.1	19.0	70.74	76.03	61.0	89.8	-2.2	9.0	0.525	54	44000028	%
																		44.96	37.44	17.44	67.6	30.0	29.8	0.0	55	44000028	%
29	4	129	130	131	0	0	W	Wy	CW	0	0	66.27	72.0	39.18	87.9	-3.8	29.5	71.03	76.32	61.36	90.0	-2.2	8.9	0.489	56	44000029	%
																		62.99	68.91	22.31	86.4	-4.7	52.5	0.0	57	44000029	%
30	4	139	140	141	0	0	W	Wl	CW	0	0	47.55	56.51	38.93	79.9	-15.6	15.9	70.92	76.17	61.7	89.9	-2.1	8.4	0.488	58	44000030	%
																		28.71	39.05	21.87	68.7	-29.2	22.9	0.0	59	44000030	%
31	4	91	92	93	0	0	CW	Cw	C	0	0	25.49	34.86	55.62	65.6	-28.7	-27.4	36.36	45.16	56.82	73.0	-19.8	-16.0	0.575	60	44000031	%
																		15.14	23.77	50.87	55.8	-38.0	-39.4	0.0	61	44000031	%
32	4	101	102	103	0	0	VW	Vw	V	0	0	15.03	13.62	27.53	43.7	13.7	-30.1	26.63	25.81	36.12	57.8	9.5	-18.3	0.466	62	44000032	%
																		6.75	5.59	18.33	28.4	16.2	-39.7	0.0	63	44000032	%
33	4	111	112	113	0	0	MW	Mw	M	0	0	37.18	25.66	25.78	57.7	48.7	-3.1	46.49	37.94	35.34	67.9	32.8	0.1	0.574	64	44000033	%
																		28.63	16.0	17.26	46.9	64.4	-5.3	0.0	65	44000033	%
34	4	121	122	123	0	0	OW	Ow	O	0	0	35.16	24.73	7.54	56.8	45.8	39.0	44.96	37.44	17.44	67.6	30.0	29.8	0.569	66	44000034	%
																		26.93	15.77	2.77	46.6	58.9	46.0	0.0	67	44000034	%
35	4	131	132	133	0	0	YW	Yw	Y	0	0	61.2	66.21	11.14	85.1	-3.0	75.8	62.99	68.91	22.31	86.4	-4.7	52.5	0.507	68	44000035	%
																		59.49	62.68	5.9	83.2	0.7	91.4	0.0	69	44000035	%
36	4	141	142	143	0	0	LW	Lw	L	0	0	17.59	27.98	12.47	59.8	-41.4	28.5	28.71	39.05	21.87	68.7	-29.2	22.9	0.537	70	44000036	%
																		8.75	17.27	5.79	48.6	-52.1	32.1	0.0	71	44000036	%
37	4	149	150	151	0	0	C	Cn	CN	0	0	10.35	15.49	30.2	46.3	-29.2	-29.8	15.06	23.72	50.74	55.8	-38.3	-39.3	0.437	72	44000037	%
																		7.0	9.79	16.56	37.4	-20.4	-20.1	0.0	73	44000037	%
38	4	159	160	161	0	0	V	Vn	VN	0	0	5.54	4.92	12.9	26.5	10.9	-30.0	6.54	5.43	17.84	27.9	16.0	-39.4	0.409	74	44000038	%
																		4.57	4.37	8.48	24.8	6.1	-19.4	0.0	75	44000038	%
39	4	169	170	171	0	0	M	Mn	MN	0	0	17.64	10.94	11.86	39.4	46.6	-4.8	28.22	15.75	16.81	46.6	64.2	-4.9	0.427	76	44000039	%
																		11.41	8.3	8.57	34.6	29.0	-2.9	0.0	77	44000039	%
40	4	179	180	181	0	0	O	On	ON	0	0	16.9	10.93	3.06	39.4	42.6	31.5	26.64	15.64	2.85	46.5	58.5	45.1	0.431	78	44000040	%
																		10.5	7.71	2.99	33.4	27.5	21.5	0.0	79	44000040	%
41	4	189	190	191	0	0	Y	Yn	YN	0	0	35.17	37.82	5.42	67.8	-1.8	67.1	59.71	62.93	5.83	83.4	0.6	92.0	0.53	80	44000041	%
																		18.22	19.62	4.63	51.4	-1.6	42.6	0.0	81	44000041	%

TUB registration: 20140801-XE38/XE38L0NA.TXT /.PS
 application for measurement of display or printer output, no separation
 TUB material: code=rh4ta

see similar files: http://130.149.60.45/~farbmetrik/XE38/XE38.HTM
technical information: http://www.ps.bam.de or http://130.149.60.45/~farbmetrik

N	S	N1	N2	N3	N4	N5	NA1	NA2	NA3	NA4	NA5	X0	Y0	Z0	L*0	a*0	b*0	X1	Y1	Z1	L*1	a*1	b*1	VIM	no.	inr
1	3	1	2	3	0	0	W	CW	C	0	0	43.07	51.42	77.39	76.9	-16.5	-18.2	81.89	87.15	84.89	94.8	-1.8	6.9	0.433	0	61000001
																		19.34	27.47	69.83	59.4	-30.9	-42.4	0.0	1	61000001
2	3	7	8	9	0	0	W	VW	V	0	0	30.85	28.28	46.11	60.1	15.4	-18.9	81.86	87.13	84.76	94.7	-1.8	7.0	0.452	2	61000002
																		7.8	5.15	22.36	27.1	31.2	-43.5	0.0	3	61000002
3	3	13	14	15	0	0	W	MW	M	0	0	53.92	42.7	46.58	71.3	37.3	0.0	81.95	87.17	85.29	94.8	-1.7	6.7	0.429	4	61000003
																		33.13	17.03	21.98	48.2	74.7	-6.4	0.0	5	61000003
4	3	19	20	21	0	0	W	OW	O	0	0	52.07	43.5	24.32	71.8	30.2	30.1	82.02	87.21	85.66	94.8	-1.6	6.4	0.43	6	61000004
																		30.66	17.1	2.67	48.3	65.3	52.9	0.0	7	61000004
5	3	25	26	27	0	0	W	YW	Y	0	0	71.92	80.69	32.04	91.9	-9.8	53.1	82.01	87.27	85.07	94.8	-1.8	6.9	0.473	8	61000005
																		66.66	73.8	6.99	88.8	-7.6	100.6	0.0	9	61000005
6	3	31	32	33	0	0	W	LW	L	0	0	32.29	44.66	29.33	72.6	-33.3	23.7	81.97	87.24	84.96	94.8	-1.8	6.9	0.48	10	61000006
																		9.71	20.83	6.41	52.7	-62.6	40.7	0.0	11	61000006
7	3	37	38	39	0	0	C	CN	N	0	0	8.52	10.95	21.14	39.5	-15.4	-20.0	19.77	27.96	70.59	59.8	-30.7	-42.2	0.542	12	61000007
																		2.98	3.09	3.08	20.4	0.6	1.8	0.0	13	61000007
8	3	43	44	45	0	0	V	VN	N	0	0	5.28	4.23	10.25	24.4	16.5	-21.2	8.21	5.47	23.25	28.0	31.2	-43.5	0.602	14	61000008
																		3.08	3.18	3.17	20.7	1.0	1.8	0.0	15	61000008
9	3	49	50	51	0	0	M	MN	N	0	0	12.27	8.03	9.32	34.0	36.9	-1.8	32.53	16.54	21.19	47.6	75.2	-6.1	0.515	16	61000009
																		2.84	2.94	2.96	19.8	0.7	1.6	0.0	17	61000009
10	3	55	56	57	0	0	O	ON	N	0	0	11.57	7.96	2.63	33.9	32.7	28.1	30.31	16.86	2.49	48.0	65.3	53.7	0.52	18	61000010
																		2.9	3.01	2.99	20.0	0.6	1.8	0.0	19	61000010
11	3	61	62	63	0	0	Y	YN	N	0	0	20.09	22.16	4.76	54.2	-4.7	50.5	66.79	74.09	7.44	88.9	-7.9	99.2	0.487	20	61000011
																		3.03	3.11	3.07	20.5	1.2	2.0	0.0	21	61000011
12	3	67	68	69	0	0	L	LN	N	0	0	5.36	8.94	4.48	35.8	-31.8	20.3	10.24	21.55	6.75	53.5	-61.8	40.7	0.513	22	61000012
																		3.14	3.22	3.18	20.9	1.3	2.0	0.0	23	61000012
13	3	209	210	211	0	0	W	C	N	0	0	18.97	27.01	69.41	58.9	-30.9	-42.8	81.9	87.16	84.9	94.8	-1.8	6.9	0.451	24	61000013
																		2.71	2.82	2.88	19.3	0.4	1.3	0.0	25	61000013
14	3	215	216	217	0	0	W	V	N	0	0	7.46	4.89	21.98	26.4	31.2	-44.1	81.87	87.12	84.91	94.7	-1.8	6.9	0.622	26	61000014
																		2.73	2.85	2.9	19.4	0.4	1.3	0.0	27	61000014
15	3	221	222	223	0	0	W	M	N	0	0	32.65	16.67	21.39	47.8	74.9	-6.1	81.94	87.19	85.03	94.8	-1.8	6.8	0.457	28	61000015
																		2.83	2.94	3.01	19.8	0.5	1.2	0.0	29	61000015
16	3	227	228	229	0	0	W	O	N	0	0	30.21	16.81	2.56	48.0	65.2	53.0	81.96	87.2	85.25	94.8	-1.7	6.7	0.464	30	61000016
																		2.84	2.95	3.07	19.8	0.6	0.9	0.0	31	61000016
17	3	233	234	235	0	0	W	Y	N	0	0	66.73	73.83	7.17	88.8	-7.5	99.9	82.0	87.31	84.7	94.8	-1.9	7.2	0.346	32	61000017
																		2.67	2.78	2.85	19.1	0.4	1.1	0.0	33	61000017
18	3	239	240	241	0	0	W	L	N	0	0	9.33	20.32	6.4	52.2	-63.2	39.8	81.86	87.15	84.58	94.8	-1.8	7.1	0.499	34	61000018
																		2.71	2.82	2.88	19.3	0.4	1.3	0.0	35	61000018
19	3	245	246	247	0	0	C	V	M	0	0	7.64	5.03	22.24	26.8	31.2	-43.9	19.13	27.14	69.68	59.1	-30.7	-42.8	0.506	36	61000019
																		32.77	16.79	21.38	47.9	74.7	-5.9	0.0	37	61000019
20	3	251	252	253	0	0	M	O	Y	0	0	30.19	16.79	2.54	47.9	65.2	53.1	32.74	16.74	21.47	47.9	74.9	-6.1	0.375	38	61000020
																		66.63	73.82	7.5	88.8	-7.7	98.7	0.0	39	61000020
21	3	257	258	259	0	0	Y	L	C	0	0	9.23	20.19	6.39	52.0	-63.4	39.5	66.64	73.75	7.32	88.8	-7.5	99.3	0.517	40	61000021
																		18.96	26.97	69.34	58.9	-30.9	-42.8	0.0	41	61000021
22	3	263	264	265	0	0	V	C	L	0	0	18.93	26.93	69.28	58.9	-30.9	-42.8	7.53	4.95	21.87	26.6	31.1	-43.6	0.517	42	61000022
																		9.3	20.22	6.42	52.0	-63.0	39.5	0.0	43	61000022
23	3	269	270	271	0	0	L	Y	O	0	0	66.61	73.78	7.37	88.8	-7.6	99.2	9.55	20.6	6.52	52.5	-62.8	39.8	0.509	44	61000023
																		30.05	16.67	2.5	47.8	65.4	53.1	0.0	45	61000023
24	3	275	276	277	0	0	O	M	V	0	0	32.75	16.75	21.34	47.9	74.8	-5.9	30.17	16.78	22.55	47.9	65.2	53.0	0.396	46	61000024
																		7.66	5.06	2.19	26.9	31.0	-43.7	0.0	47	61000024
25	5	89	90	91	92	93	W	Wc	CW	Cw	C	61.41	68.76	83.1	86.3	-9.0	-6.2	81.96	87.19	85.24	94.8	-1.7	6.7	0.206	50	61000025
																		42.84	51.17	77.72	76.7	-16.5	-18.7	0.428	49	61000025
																		42.84	51.17	77.72	76.7	-16.5	-18.7	0.643	1	61000025
																		19.11	27.16	69.75	59.1	-30.8	-42.8	0.0	51	61000025
26	5	99	100	101	102	103	W	Wv	CW	Vw	V	53.77	53.72	66.4	78.3	7.0	-7.0	81.67	86.84	85.23	94.6	-1.6	6.5	0.236	54	61000026
																		31.0	28.44	46.98	60.2	15.3	-19.5	0.474	53	61000026
																		31.0	28.44	46.98	60.2	15.3				

see similar files: <http://130.149.60.45/~farbmetrik/XE38/XE38L0NA.TXT>
 technical information: <http://www.ps.bam.de> or <http://130.149.60.45/~farbmetrik>

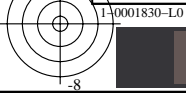
N	S	N1	N2	N3	N4	N5	NA1	NA2	NA3	NA4	NA5	X0	Y0	Z0	L*0	a*0	b*0	X1	Y1	Z1	L*1	a*1	b*1	VIM	no.	inr
%1000*(CIEXYZ & DV) for all colours (a) of experiment, iimp=104, colour difference pairs VA_LW106=VIK_ADJACENT, xchart=17, xchart3=2, xchart4=0 %																										
27	5	109	110	111	112	113	W	Wm	CW	Mw	M	68.55	64.01	66.22	83.9	17.4	2.9	82.01	87.21	85.53	94.8	-1.7	6.5	0.231	58	61000027
																		54.22	42.96	47.36	71.5	37.3	-0.6	0.469	57	61000027
																		54.22	42.96	47.36	71.5	37.3	-0.6	0.69	1	61000027
																		32.94	16.85	21.83	48.0	74.9	-6.5	0.0	59	61000027
28	5	119	120	121	122	123	W	Wo	CW	Ow	O	64.91	61.74	48.22	82.7	14.5	17.8	81.89	87.15	84.58	94.8	-1.8	7.1	0.223	62	61000028
																		51.43	42.5	23.75	71.2	31.5	29.9	0.452	61	61000028
																		51.43	42.5	23.75	71.2	31.5	29.9	0.678	1	61000028
																		30.15	16.71	2.43	47.9	65.5	53.7	0.0	63	61000028
29	5	129	130	131	132	133	W	Wy	CW	Yw	Y	75.93	83.22	55.28	93.1	-6.3	28.5	81.99	87.23	85.07	94.8	-1.7	6.9	0.175	65	61000029
																		72.08	80.77	32.95	92.0	-9.6	51.9	0.488	66	61000029
																		72.08	80.77	32.95	92.0	-9.6	51.9	0.732	1	61000029
																		66.78	74.0	7.58	88.9	-7.7	98.6	0.0	67	61000029
30	5	139	140	141	142	143	W	Wl	CW	Lw	L	54.95	65.26	54.93	84.6	-17.1	14.2	81.89	87.08	85.31	94.7	-1.7	6.6	0.232	70	61000030
																		32.6	44.92	30.62	72.8	-32.9	22.1	0.471	69	61000030
																		32.6	44.92	30.62	72.8	-32.9	22.1	0.698	1	61000030
																		9.86	21.11	6.73	53.0	-62.7	39.9	0.0	71	61000030
31	5	149	150	151	152	153	C	Cn	CN	Nc	N	12.81	17.46	40.6	48.8	-23.0	-32.1	19.27	27.35	69.61	59.3	-30.8	-42.4	0.268	74	61000031
																		8.05	10.39	20.66	38.5	-15.5	-20.8	0.502	73	61000031
																		8.05	10.39	20.66	38.5	-15.5	-20.8	0.748	1	61000031
																		2.73	2.84	2.93	19.4	0.5	1.0	0.0	75	61000031
32	5	159	160	161	162	163	V	Vn	VN	Nv	N	6.16	4.41	15.59	25.0	24.1	-33.9	7.63	5.0	22.14	26.7	31.4	-43.9	0.267	78	61000032
																		4.84	3.85	9.87	23.1	16.4	-22.2	0.53	77	61000032
																		4.84	3.85	9.87	23.1	16.4	-22.2	0.796	1	61000032
																		2.82	2.93	2.97	19.7	0.7	1.4	0.0	79	61000032
33	5	169	170	171	172	173	M	Mn	MN	Nm	N	20.06	11.21	14.29	39.9	56.6	-5.2	32.8	16.75	21.46	47.9	75.0	-6.1	0.268	82	61000033
																		12.45	8.16	9.7	34.3	37.0	-2.5	0.5	81	61000033
																		12.45	8.16	9.7	34.3	37.0	-2.5	0.723	1	61000033
																		2.95	3.05	3.07	20.2	0.8	1.6	0.0	83	61000033
34	5	179	180	181	182	183	O	On	ON	No	N	18.78	11.34	2.51	40.1	49.1	39.9	30.13	16.7	2.46	47.8	65.5	53.5	0.262	86	61000034
																		11.28	7.75	2.62	33.4	32.5	27.4	0.49	85	61000034
																		11.28	7.75	2.62	33.4	32.5	27.4	0.719	1	61000034
																		2.74	2.86	2.95	19.5	0.3	1.1	0.0	87	61000034
35	5	189	190	191	192	193	Y	Yn	YN	Ny	N	39.43	44.28	6.44	72.4	-8.1	74.5	66.65	73.85	7.56	88.8	-7.7	98.5	0.248	90	61000035
																		19.74	21.83	4.83	53.8	-5.0	49.6	0.492	89	61000035
																		19.74	21.83	4.83	53.8	-5.0	49.6	0.705	1	61000035
																		2.81	2.92	2.97	19.7	0.5	1.4	0.0	91	61000035
36	5	199	200	201	202	203	L	Ln	LN	Nl	N	7.15	13.85	5.36	44.0	-47.5	30.2	9.8	21.03	6.73	52.9	-62.9	39.8	0.258	94	61000036
																		5.09	8.6	4.49	35.2	-32.2	19.1	0.5	93	61000036
																		5.09	8.6	4.49	35.2	-32.2	19.1	0.722	1	61000036
																		2.99	3.1	3.12	20.4	0.7	1.6	0.0	95	61000036
37	3	281	282	283	0	0	C	CV	V	0	0	12.12	12.75	40.67	42.3	0.0	-43.3	19.06	27.08	69.26	59.0	-30.8	-42.5	0.462	96	61000037
																		7.37	4.81	21.6	26.2	31.3	-43.8	0.0	97	61000037
																		7.37	4.81	21.6	26.2	31.3	-43.8	0.554	98	61000038
38	3	283	284	285	0	0	V	MV	M	0	0	16.05	8.94	20.74	35.8	52.7	-25.6	32.5	16.55	21.02	47.6	75.1	-5.7	0.0	99	61000038
																		32.47	16.54	20.95	47.6	75.0	-5.6	0.565	100	61000039
39	3	291	292	293	0	0	M	MO	O	0	0	31.56	16.8	8.9	48.0	70.3	23.5	30.15	16.75	2.52	47.9	65.3	53.2	0.0	101	61000039
																		32.47	16.54	20.95	47.6	75.0	-5.6	0.565	100	61000039
																		30.15	16.75	2.52	47.9	65.3	53.2	0.0	101	61000039
40	3	293	294	295	0	0	O	YO	Y	0	0	46.53	39.4	4.83	69.0	27.5	75.8	30.15	16.75	2.52	47.9	65.3	53.2	0.46	102	61000040
																		66.7	73.9	7.49	88.8	-7.7	98.8	0.0	103	61000040
																		66.7	73.9	7.49	88.8	-7.7	98.8	0.0	103	61000040
41	3	301	302	303	0	0	Y	YL	L	0	0	28.03	40.71	7.17	69.9	-37.7	67.4	66.7	73.92	7.6	88.8	-7.7	98.4	0.438	104	61000041
																		9.66	20.82	6.75	52.7	-62.9	39.3	0.0	105	61000041

TUB registration: 20140801-XE38/XE38L0NA.TXT /PS
 application for measurement of display or printer output, no separation
 TUB material: code=rh4ta

see similar files: <http://130.149.60.45/~farbmetrik/XE38/XE38.HTM>
technical information: <http://www.ps.bam.de> or <http://130.149.60.45/~farbmetrik>

N	S	N1	N2	N3	N4	N5	NA1	NA2	NA3	NA4	NA5	X0	Y0	Z0	L*0	a*0	b*0	X1	Y1	Z1	L*1	a*1	b*1	VIM	no.	inr	%
1	3	1	2	3	0	0	W	CW	C	0	0	43.07	51.42	77.39	76.9	-16.5	-18.2	81.89	87.15	84.89	94.8	-1.8	6.9	0.523	0	62000001	%
																		19.34	27.47	69.83	59.4	-30.9	-42.4	0.0	1	62000001	%
2	3	7	8	9	0	0	W	VW	V	0	0	30.85	28.28	46.11	60.1	15.4	-18.9	81.86	87.13	84.76	94.7	-1.8	7.0	0.454	2	62000002	%
																		7.8	5.15	22.36	27.1	31.2	-43.5	0.0	3	62000002	%
3	3	13	14	15	0	0	W	MW	M	0	0	53.92	42.7	46.58	71.3	37.3	0.0	81.95	87.17	85.29	94.8	-1.7	6.7	0.45	4	62000003	%
																		33.13	17.03	21.98	48.2	74.7	-6.4	0.0	5	62000003	%
4	3	19	20	21	0	0	W	OW	O	0	0	52.07	43.5	24.32	71.8	30.2	30.1	82.02	87.21	85.66	94.8	-1.6	6.4	0.4	6	62000004	%
																		30.66	17.1	2.67	48.3	65.3	52.9	0.0	7	62000004	%
5	3	25	26	27	0	0	W	YW	Y	0	0	71.92	80.69	32.04	91.9	-9.8	53.1	82.01	87.27	85.07	94.8	-1.8	6.9	0.429	8	62000005	%
																		66.66	73.8	6.99	88.8	-7.6	100.6	0.0	9	62000005	%
6	3	31	32	33	0	0	W	LW	L	0	0	32.29	44.66	29.33	72.6	-33.3	23.7	81.97	87.24	84.96	94.8	-1.8	6.9	0.501	10	62000006	%
																		9.71	20.83	6.41	52.7	-62.6	40.7	0.0	11	62000006	%
7	3	37	38	39	0	0	C	CN	N	0	0	8.52	10.95	21.14	39.5	-15.4	-20.0	19.77	27.96	70.59	59.8	-30.7	-42.2	0.541	12	62000007	%
																		2.98	3.09	3.08	20.4	0.6	1.8	0.0	13	62000007	%
8	3	43	44	45	0	0	V	VN	N	0	0	5.28	4.23	10.25	24.4	16.5	-21.2	8.21	5.47	23.25	28.0	31.2	-43.5	0.497	14	62000008	%
																		3.08	3.18	3.17	20.7	1.0	1.8	0.0	15	62000008	%
9	3	49	50	51	0	0	M	MN	N	0	0	12.27	8.03	9.32	34.0	36.9	-1.8	32.53	16.54	21.19	47.6	75.2	-6.1	0.526	16	62000009	%
																		2.84	2.94	2.96	19.8	0.7	1.6	0.0	17	62000009	%
10	3	55	56	57	0	0	O	ON	N	0	0	11.57	7.96	2.63	33.9	32.7	28.1	30.31	16.86	2.49	48.0	65.3	53.7	0.529	18	62000010	%
																		2.9	3.01	2.99	20.0	0.6	1.8	0.0	19	62000010	%
11	3	61	62	63	0	0	Y	YN	N	0	0	20.09	22.16	4.76	54.2	-4.7	50.5	66.79	74.09	7.44	88.9	-7.9	99.2	0.452	20	62000011	%
																		3.03	3.11	3.07	20.5	1.2	2.0	0.0	21	62000011	%
12	3	67	68	69	0	0	L	LN	N	0	0	5.36	8.94	4.48	35.8	-31.8	20.3	10.24	21.55	6.75	53.5	-61.8	40.7	0.438	22	62000012	%
																		3.14	3.22	3.18	20.9	1.3	2.0	0.0	23	62000012	%
13	3	209	210	211	0	0	W	C	N	0	0	18.97	27.01	69.41	58.9	-30.9	-42.8	81.9	87.16	84.9	94.8	-1.8	6.9	0.454	24	62000013	%
																		2.71	2.82	2.88	19.3	0.4	1.3	0.0	25	62000013	%
14	3	215	216	217	0	0	W	V	N	0	0	7.46	4.89	21.98	26.4	31.2	-44.1	81.87	87.12	84.91	94.7	-1.8	6.9	0.714	26	62000014	%
																		2.73	2.85	2.9	19.4	0.4	1.3	0.0	27	62000014	%
15	3	221	222	223	0	0	W	M	N	0	0	32.65	16.67	21.39	47.8	74.9	-6.1	81.94	87.19	85.03	94.8	-1.8	6.8	0.435	28	62000015	%
																		2.83	2.94	3.01	19.8	0.5	1.2	0.0	29	62000015	%
16	3	227	228	229	0	0	W	O	N	0	0	30.21	16.81	2.56	48.0	65.2	53.0	81.96	87.2	85.25	94.8	-1.7	6.7	0.479	30	62000016	%
																		2.84	2.95	3.07	19.8	0.6	0.9	0.0	31	62000016	%
17	3	233	234	235	0	0	W	Y	N	0	0	66.73	73.83	7.17	88.8	-7.5	99.9	82.0	87.31	84.7	94.8	-1.9	7.2	0.304	32	62000017	%
																		2.67	2.78	2.85	19.1	0.4	1.1	0.0	33	62000017	%
18	3	239	240	241	0	0	W	L	N	0	0	9.33	20.32	6.4	52.2	-63.2	39.8	81.86	87.15	84.58	94.8	-1.8	7.1	0.505	34	62000018	%
																		2.71	2.82	2.88	19.3	0.4	1.3	0.0	35	62000018	%
19	3	245	246	247	0	0	C	V	M	0	0	7.64	5.03	22.24	26.8	31.2	-43.9	19.13	27.14	69.68	59.1	-30.7	-42.8	0.479	36	62000019	%
																		32.77	16.79	21.38	47.9	74.7	-5.9	0.0	37	62000019	%
20	3	251	252	253	0	0	M	O	Y	0	0	30.19	16.79	2.54	47.9	65.2	53.1	32.74	16.74	21.47	47.9	74.9	-6.1	0.329	38	62000020	%
																		66.63	73.82	7.5	88.8	-7.7	98.7	0.0	39	62000020	%
21	3	257	258	259	0	0	Y	L	C	0	0	9.23	20.19	6.39	52.0	-63.4	39.5	66.64	73.75	7.32	88.8	-7.5	99.3	0.604	40	62000021	%
																		18.96	26.97	69.34	58.9	-30.9	-42.8	0.0	41	62000021	%
22	3	263	264	265	0	0	V	C	L	0	0	18.93	26.93	69.28	58.9	-30.9	-42.8	7.53	4.95	21.87	26.6	31.1	-43.6	0.587	42	62000022	%
																		9.3	20.22	6.42	52.0	-63.0	39.5	0.0	43	62000022	%
23	3	269	270	271	0	0	L	Y	O	0	0	66.61	73.78	7.37	88.8	-7.6	99.2	9.55	20.6	6.52	52.5	-62.8	39.8	0.552	44	62000023	%
																		30.05	16.67	2.5	47.8	65.4	53.1	0.0	45	62000023	%
24	3	275	276	277	0	0	O	M	V	0	0	32.75	16.75	21.34	47.9	74.8	-5.9	30.17	16.78	22.55	47.9	65.2	53.0	0.347	46	62000024	%
																		7.66	5.06	2.19	26.9	31.0	-43.7	0.0	47	62000024	%
25	5	89	90	91	92	93	W	Wc	CW	Cw	C	61.41	68.76	83.1	86.3	-9.0	-6.2	81.96	87.19	85.24	94.8	-1.7	6.7	0.22	50	62000025	%
																		42.84	51.17	77.72	76.7	-16.5	-18.7	0.455	49	62000025	%
																		42.84	51.17	77.72	76.7	-16.5	-18.7	0.664	1	62000025	%
																		19.11	27.16	69.75	59.1	-30.8	-42.8	0.0	51	62000025	%
26	5	99	100	101	102	103	W	Wv	CW	Vw	V	53.77	53.72	66.4	78.3	7.0	-7.0	81.67	86.84	85.23	94.6	-1.6	6.5	0.232	54	62000026	%
																		31.0	28.44	46.98	60.2	15.3	-19.5	0.444	53	62000026	%
																		31.0	28.44	46.98	60.2	15.3	-19.5	0.659	1	62000026	%
																		7.72	5.09	22.44	27.0	31.1	-43.9	0.0	55	62000026	%

TUB registration: 20140801-XE38/XE38LONA.TXT /PS
application for measurement of display or printer output, no separation
TUB material: code=rh4ta



see similar files: <http://130.149.60.45/~farbmetrik/XE38/XE38L0NA.TXT>
technical information: <http://www.ps.bam.de> or <http://130.149.60.45/~farbmetrik>

N	S	N1	N2	N3	N4	N5	NA1	NA2	NA3	NA4	NA5	X0	Y0	Z0	L*0	a*0	b*0	X1	Y1	Z1	L*1	a*1	b*1	VIM	no.	inr	%
27	5	109	110	111	112	113	W	Wm	CW	Mw	M	68.55	64.01	66.22	83.9	17.4	2.9	82.01	87.21	85.53	94.8	-1.7	6.5	0.255	58	62000027	%
																		54.22	42.96	47.36	71.5	37.3	-0.6	0.473	57	62000027	%
																		54.22	42.96	47.36	71.5	37.3	-0.6	0.708	1	62000027	%
																		32.94	16.85	21.83	48.0	74.9	-6.5	0.0	59	62000027	%
28	5	119	120	121	122	123	W	Wo	CW	Ow	O	64.91	61.74	48.22	82.7	14.5	17.8	81.89	87.15	84.58	94.8	-1.8	7.1	0.226	62	62000028	%
																		51.43	42.5	23.75	71.2	31.5	29.9	0.447	61	62000028	%
																		51.43	42.5	23.75	71.2	31.5	29.9	0.689	1	62000028	%
																		30.15	16.71	2.43	47.9	65.5	53.7	0.0	63	62000028	%
29	5	129	130	131	132	133	W	Wy	CW	Yw	Y	75.93	83.22	55.28	93.1	-6.3	28.5	81.99	87.23	85.07	94.8	-1.7	6.9	0.235	66	62000029	%
																		72.08	80.77	32.95	92.0	-9.6	51.9	0.46	65	62000029	%
																		72.08	80.77	32.95	92.0	-9.6	51.9	0.718	1	62000029	%
																		66.78	74.0	7.58	88.9	-7.7	98.6	0.0	67	62000029	%
30	5	139	140	141	142	143	W	Wl	CW	Lw	L	54.95	65.26	54.93	84.6	-17.1	14.2	81.89	87.08	85.31	94.7	-1.7	6.6	0.251	70	62000030	%
																		32.6	44.92	30.62	72.8	-32.9	22.1	0.463	69	62000030	%
																		32.6	44.92	30.62	72.8	-32.9	22.1	0.695	1	62000030	%
																		9.86	21.11	6.73	53.0	-62.7	39.9	0.0	71	62000030	%
31	5	149	150	151	152	153	C	Cn	CN	Nc	N	12.81	17.46	40.6	48.8	-23.0	-32.1	19.27	27.35	69.61	59.3	-30.8	-42.4	0.285	74	62000031	%
																		8.05	10.39	20.66	38.5	-15.5	-20.8	0.511	73	62000031	%
																		8.05	10.39	20.66	38.5	-15.5	-20.8	0.763	1	62000031	%
																		2.73	2.84	2.93	19.4	0.5	1.0	0.0	75	62000031	%
32	5	159	160	161	162	163	V	Vn	VN	Nv	N	6.16	4.41	15.59	25.0	24.1	-33.9	7.63	5.0	22.14	26.7	31.4	-43.9	0.217	78	62000032	%
																		4.84	3.85	9.87	23.1	16.4	-22.2	0.482	77	62000032	%
																		4.84	3.85	9.87	23.1	16.4	-22.2	0.785	1	62000032	%
																		2.82	2.93	2.97	19.7	0.7	1.4	0.0	79	62000032	%
33	5	169	170	171	172	173	M	Mn	MN	Nm	N	20.06	11.21	14.29	39.9	56.6	-5.2	32.8	16.75	21.46	47.9	75.0	-6.1	0.291	82	62000033	%
																		12.45	8.16	9.7	34.3	37.0	-2.5	0.521	81	62000033	%
																		12.45	8.16	9.7	34.3	37.0	-2.5	0.714	1	62000033	%
																		2.95	3.05	3.07	20.2	0.8	1.6	0.0	83	62000033	%
34	5	179	180	181	182	183	O	On	ON	No	N	18.78	11.34	2.51	40.1	49.1	39.9	30.13	16.7	2.46	47.8	65.5	53.5	0.284	86	62000034	%
																		11.28	7.75	2.62	33.4	32.5	27.4	0.482	85	62000034	%
																		11.28	7.75	2.62	33.4	32.5	27.4	0.72	1	62000034	%
																		2.74	2.86	2.95	19.5	0.3	1.1	0.0	87	62000034	%
35	5	189	190	191	192	193	Y	Yn	YN	Ny	N	39.43	44.28	6.44	72.4	-8.1	74.5	66.65	73.85	7.56	88.8	-7.7	98.5	0.273	90	62000035	%
																		19.74	21.83	4.83	53.8	-5.0	49.6	0.491	89	62000035	%
																		19.74	21.83	4.83	53.8	-5.0	49.6	0.679	1	62000035	%
																		2.81	2.92	2.97	19.7	0.5	1.4	0.0	91	62000035	%
36	5	199	200	201	202	203	L	Ln	LN	Nl	N	7.15	13.85	5.36	44.0	-47.5	30.2	9.8	21.03	6.73	52.9	-62.9	39.8	0.27	94	62000036	%
																		5.09	8.6	4.49	35.2	-32.2	19.1	0.46	93	62000036	%
																		5.09	8.6	4.49	35.2	-32.2	19.1	0.735	1	62000036	%
																		2.99	3.1	3.12	20.4	0.7	1.6	0.0	95	62000036	%
37	3	281	282	283	0	0	C	CV	V	0	0	12.12	12.75	40.67	42.3	0.0	-43.3	19.06	27.08	69.26	59.0	-30.8	-42.5	0.476	96	62000037	%
																		7.37	4.81	21.6	26.2	31.3	-43.8	0.0	97	62000037	%
38	3	283	284	285	0	0	V	MV	M	0	0	16.05	8.94	20.74	35.8	52.7	-25.6	7.37	4.81	21.6	26.2	31.3	-43.8	0.526	98	62000038	%
																		32.5	16.55	21.02	47.6	75.1	-5.7	0.0	99	62000038	%
39	3	291	292	293	0	0	M	MO	O	0	0	31.56	16.8	8.9	48.0	70.3	23.5	32.47	16.54	20.95	47.6	75.0	-5.6	0.607	100	62000039	%
																		30.15	16.75	2.52	47.9	65.3	53.2	0.0	101	62000039	%
40	3	293	294	295	0	0	O	YO	Y	0	0	46.53	39.4	4.83	69.0	27.5	75.8	30.15	16.75	2.52	47.9	65.3	53.2	0.5	102	62000040	%
																		66.7	73.9	7.49	88.8	-7.7	98.8	0.0	103	62000040	%
41	3	301	302	303	0	0	Y	YL	L	0	0	28.03	40.71	7.17	69.9	-37.7	67.4	66.7	73.92	7.6	88.8	-7.7	98.4	0.525	104	62000041	%
																		9.66	20.82	6.75	52.7	-62.9	39.3	0.0	105	62000041	%

TUB registration: 20140801-XE38/XE38L0NA.TXT /PS
application for measurement of display or printer output, no separation
TUB material: code=rh4ta



see similar files: <http://130.149.60.45/~farbmetrik/XE38/XE38.HTM>
technical information: <http://www.ps.bam.de> or <http://130.149.60.45/~farbmetrik>

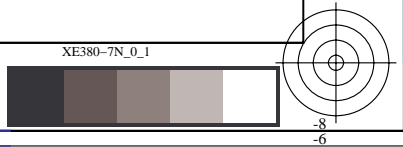
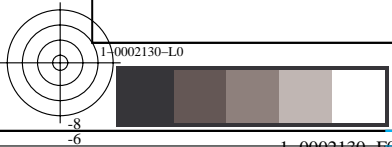
N	S	N1	N2	N3	N4	N5	NA1	NA2	NA3	NA4	NA5	X0	Y0	Z0	L*0	a*0	b*0	X1	Y1	Z1	L*1	a*1	b*1	VIM	no.	inr
1	3	4	5	6	0	0	W	CW	C	0	0	43.05	51.39	77.46	76.9	-16.5	-18.3	81.87	87.16	84.81	94.8	-1.8	7.0	0.494	0	63000001
2	3	10	11	12	0	0	W	VW	V	0	0	30.78	28.16	46.14	60.0	15.6	-19.1	81.92	87.17	85.13	94.8	-1.7	6.8	0.441	2	63000002
3	3	16	17	18	0	0	W	MW	M	0	0	54.1	42.81	46.76	71.4	37.5	-0.1	82.04	87.29	85.26	94.8	-1.7	6.8	0.464	4	63000003
4	3	22	23	24	0	0	W	OW	O	0	0	51.97	43.41	24.08	71.8	30.2	30.4	82.02	87.24	85.55	94.8	-1.7	6.5	0.464	6	63000004
5	3	28	29	30	0	0	W	YW	Y	0	0	71.87	80.63	32.09	91.9	-9.8	53.0	30.58	17.08	2.71	48.3	65.1	52.5	0.0	7	63000004
6	3	34	35	36	0	0	W	LW	L	0	0	32.27	44.64	29.41	72.6	-33.3	23.5	81.97	87.24	85.03	94.8	-1.8	6.9	0.491	8	63000005
7	3	40	41	42	0	0	C	CN	N	0	0	8.53	10.93	21.21	39.4	-15.2	-20.2	9.7	20.81	6.47	52.7	-62.6	40.4	0.0	9	63000005
8	3	46	47	48	0	0	V	VN	N	0	0	5.29	4.22	10.33	24.4	16.7	-21.5	19.77	27.94	70.45	59.8	-30.6	-42.2	0.488	12	63000006
9	3	52	53	54	0	0	M	MN	N	0	0	12.22	8.01	9.3	34.0	36.7	-1.8	3.03	3.13	3.13	20.5	0.8	1.7	0.0	13	63000007
10	3	58	59	60	0	0	O	ON	N	0	0	11.65	8.0	2.65	33.9	32.9	28.2	8.21	5.43	23.15	27.9	31.5	-43.5	0.497	14	63000008
11	3	64	65	66	0	0	Y	YN	N	0	0	20.16	22.22	4.83	54.2	-4.6	50.2	3.09	3.17	3.17	20.7	1.2	1.7	0.0	15	63000008
12	3	70	71	72	0	0	L	LN	N	0	0	5.41	8.98	4.56	35.9	-31.5	20.0	32.65	16.61	21.25	47.7	75.3	-6.0	0.535	16	63000009
13	3	212	213	214	0	0	W	C	N	0	0	18.98	26.99	69.45	58.9	-30.8	-42.8	2.85	2.96	2.96	19.8	0.7	1.7	0.0	17	63000009
14	3	218	219	220	0	0	W	V	N	0	0	7.39	4.85	21.82	26.3	31.1	-44.0	30.28	16.86	2.52	48.0	65.2	53.5	0.502	18	63000010
15	3	224	225	226	0	0	W	M	N	0	0	32.68	16.65	21.24	47.8	75.2	-5.9	2.89	3.0	2.98	20.0	0.7	1.8	0.0	19	63000010
16	3	230	231	232	0	0	W	O	N	0	0	30.23	16.81	2.61	48.0	65.3	52.6	66.79	74.09	7.57	88.9	-7.9	98.7	0.467	20	63000011
17	3	236	237	238	0	0	W	Y	N	0	0	66.64	73.73	7.31	88.7	-7.5	99.4	3.04	3.15	3.16	20.6	0.8	1.6	0.0	21	63000011
18	3	242	243	244	0	0	W	L	N	0	0	9.33	20.32	6.55	52.2	-63.3	39.2	10.16	21.5	6.87	53.4	-62.2	40.1	0.429	22	63000012
19	3	248	249	250	0	0	C	V	M	0	0	7.65	5.06	22.18	26.9	30.9	-43.6	3.12	3.21	3.22	20.8	1.1	1.7	0.0	23	63000012
20	3	254	255	256	0	0	M	O	Y	0	0	30.16	16.79	2.61	47.9	65.1	52.6	82.19	87.48	85.04	94.9	-1.8	7.1	0.458	24	63000013
21	3	260	261	262	0	0	Y	L	C	0	0	9.28	20.24	6.5	52.1	-63.3	39.2	2.66	2.78	2.95	19.1	0.2	0.5	0.0	25	63000013
22	3	266	267	268	0	0	V	C	L	0	0	19.11	27.15	69.63	59.1	-30.8	-42.7	81.89	87.14	84.96	94.7	-1.7	6.9	0.72	26	63000014
23	3	272	273	274	0	0	L	Y	O	0	0	66.78	73.97	7.57	88.9	-7.6	98.6	2.71	2.82	2.95	19.3	0.3	0.9	0.0	27	63000014
24	3	278	279	280	0	0	O	M	V	0	0	32.73	16.71	21.57	47.8	75.0	-6.4	81.85	87.07	85.17	94.7	-1.7	6.7	0.429	28	63000015
25	5	94	95	96	97	98	W	Wc	CW	Cw	C	61.52	68.82	83.38	86.4	-8.9	-6.3	2.8	2.91	3.01	19.6	0.6	1.0	0.0	29	63000015
26	5	104	105	106	107	108	W	Wv	CW	Vw	V	53.69	53.64	66.62	78.2	7.0	-7.2	81.83	87.04	85.25	94.7	-1.7	6.6	0.502	30	63000016
																		2.85	2.97	3.09	19.9	0.4	0.9	0.0	31	63000016
																		81.8	87.08	84.71	94.7	-1.8	7.0	0.341	32	63000017
																		2.7	2.82	2.95	19.3	0.3	0.8	0.0	33	63000017
																		81.96	87.24	84.83	94.8	-1.8	7.0	0.508	34	63000018
																		2.71	2.82	2.95	19.3	0.5	0.8	0.0	35	63000018
																		19.19	27.22	69.84	59.1	-30.7	-42.8	0.505	36	63000019
																		32.72	16.76	21.38	47.9	74.7	-5.9	0.0	37	63000019
																		32.71	16.74	21.41	47.9	74.7	-6.0	0.329	38	63000020
																		66.9	74.14	7.74	88.9	-7.7	98.1	0.0	39	63000020
																		66.63	73.73	7.38	88.7	-7.5	99.1	0.585	40	63000021
																		19.06	27.1	69.45	59.0	-30.8	-42.7	0.0	41	63000021
																		7.56	4.99	22.07	26.7	30.9	-43.8	0.557	42	63000022
																		9.38	20.37	6.6	52.2	-63.1	39.1	0.0	43	63000022
																		9.52	20.56	6.61	52.4	-62.9	39.4	0.511	44	63000023
																		30.33	16.93	2.58	48.1	65.0	53.1	0.0	45	63000023
																		30.24	16.87	2.59	48.0	65.0	52.9	0.373	46	63000024
																		7.68	5.06	22.47	26.9	31.1	-44.1	0.0	47	63000024
																		81.94	87.16	85.2	94.8	-1.7	6.7	0.223	50	63000025
																		42.92	51.23	77.84	76.8	-16.4	-18.7	0.476	49	63000025
																		42.92	51.23	77.84	76.8	-16.4	-18.7	0.685	1	63000025
																		19.18	27.25	69.76	59.2	-30.9	-42.7	0.0	51	63000025
																		81.97	87.21	85.01	94.8	-1.7	6.9	0.208	54	63000026
																		30.94	28.29	47.36	60.1	15.7	-20.2	0.47	53	63000026
																		30.94	28.29	47.36	60.1	15.7	-20.2	0.714	1	63000026
																		7.75	4.96	22.17	26.6	33.1	-44.1	0.0	55	63000026

TUB registration: 20140801-XE38/XE38L0NA.TXT /PS
application for measurement of display or printer output, no separation
TUB material: code=rh4ta

see similar files: <http://130.149.60.45/~farbmetrik/XE38/XE38L0NA.TXT> /PS
technical information: <http://www.ps.bam.de> or <http://130.149.60.45/~farbmetrik>

N	S	N1	N2	N3	N4	N5	NA1	NA2	NA3	NA4	NA5	X0	Y0	Z0	L*0	a*0	b*0	X1	Y1	Z1	L*1	a*1	b*1	VIM	no.	inr	%
27	5	114	115	116	117	118	W	Wm	CW	Mw	M	68.48	63.94	66.14	83.9	17.5	2.9	82.1	87.32	85.54	94.8	-1.7	6.6	0.223	58	63000027	%
																		54.23	42.93	47.4	71.5	37.4	-0.6	0.473	57	63000027	%
																		54.23	42.93	47.4	71.5	37.4	-0.6	0.691	1	63000027	%
																		33.03	16.93	21.84	48.1	74.9	-6.4	0.0	59	63000027	%
28	5	124	125	126	127	128	W	Wo	CW	Ow	O	64.83	61.63	48.41	82.7	14.6	17.5	81.81	87.07	85.02	94.7	-1.8	6.8	0.244	62	63000028	%
																		51.47	42.56	23.62	71.2	31.4	30.2	0.47	61	63000028	%
																		51.47	42.56	23.62	71.2	31.4	30.2	0.688	1	63000028	%
																		30.0	16.64	2.51	47.8	65.3	53.0	0.0	63	63000028	%
29	5	134	135	136	137	138	W	Wy	CW	Yw	Y	76.36	84.01	54.88	93.4	-6.9	29.5	81.83	87.02	85.04	94.7	-1.7	6.7	0.241	66	63000029	%
																		71.58	80.17	30.74	91.7	-9.5	54.5	0.508	65	63000029	%
																		71.58	80.17	30.74	91.7	-9.5	54.5	0.811	1	63000029	%
																		66.03	73.0	7.06	88.4	-7.3	99.7	0.0	67	63000029	%
30	5	144	145	146	147	148	W	Wl	CW	Lw	L	54.95	65.24	54.93	84.6	-17.1	14.2	81.98	87.2	85.39	94.8	-1.7	6.6	0.217	70	63000030	%
																		32.57	44.85	30.76	72.7	-32.8	21.8	0.451	69	63000030	%
																		32.57	44.85	30.76	72.7	-32.8	21.8	0.697	1	63000030	%
																		9.88	21.1	6.79	53.0	-62.5	39.7	0.0	71	63000030	%
31	5	154	155	156	157	158	C	Cn	CN	Nc	N	12.92	17.6	40.75	49.0	-23.1	-32.0	19.26	27.33	69.8	59.2	-30.8	-42.6	0.276	74	63000031	%
																		8.1	10.44	21.02	38.6	-15.4	-21.3	0.505	73	63000031	%
																		8.1	10.44	21.02	38.6	-15.4	-21.3	0.758	1	63000031	%
																		2.75	2.87	2.96	19.5	0.4	1.0	0.0	75	63000031	%
32	5	164	165	166	167	168	V	Vn	VN	Nv	N	6.07	4.26	15.28	24.5	25.2	-34.0	7.69	4.9	21.89	26.4	33.2	-43.9	0.17	78	63000032	%
																		4.69	3.66	9.65	22.5	17.3	-22.7	0.833	1	63000032	%
																		4.69	3.66	9.65	22.5	17.3	-22.7	0.833	1	63000032	%
																		2.97	3.04	2.94	20.2	1.3	2.4	0.0	79	63000032	%
33	5	174	175	176	177	178	M	Mn	MN	Nm	N	20.09	11.25	14.42	40.0	56.4	-5.3	32.96	16.88	21.78	48.1	74.9	-6.4	0.282	82	63000033	%
																		12.49	8.17	9.82	34.3	37.2	-2.9	0.5	81	63000033	%
																		12.49	8.17	9.82	34.3	37.2	-2.9	0.732	1	63000033	%
																		2.96	3.07	3.14	20.3	0.7	1.3	0.0	83	63000033	%
34	5	184	185	186	187	188	O	On	ON	No	N	18.78	11.36	2.55	40.1	49.0	39.6	30.09	16.71	2.48	47.8	65.3	53.4	0.282	86	63000034	%
																		11.28	7.74	2.61	33.4	32.6	27.5	0.482	85	63000034	%
																		11.28	7.74	2.61	33.4	32.6	27.5	0.71	1	63000034	%
																		2.77	2.88	2.97	19.5	0.7	1.1	0.0	87	63000034	%
35	5	194	195	196	197	198	Y	Yn	YN	Ny	N	39.61	44.43	6.37	72.5	-8.0	74.9	65.87	72.76	6.94	88.3	-7.2	99.9	0.299	90	63000035	%
																		19.92	22.01	4.66	54.0	-4.8	50.7	0.5	89	63000035	%
																		19.92	22.01	4.66	54.0	-4.8	50.7	0.702	1	63000035	%
																		2.91	3.0	2.98	20.0	1.0	1.8	0.0	91	63000035	%
36	5	204	205	206	207	208	L	Ln	LN	Nl	N	7.13	13.81	5.32	43.9	-47.5	30.2	9.77	20.96	6.66	52.9	-62.7	39.9	0.272	94	63000036	%
																		5.07	8.54	4.42	35.0	-31.9	19.3	0.451	93	63000036	%
																		5.07	8.54	4.42	35.0	-31.9	19.3	0.704	1	63000036	%
																		2.95	3.06	3.08	20.2	0.7	1.6	0.0	95	63000036	%
37	3	286	287	288	0	0	C	CV	V	0	0	12.22	12.84	40.95	42.5	0.1	-43.4	19.08	27.11	69.59	59.0	-30.8	-42.8	0.511	96	63000037	%
																		7.46	4.9	21.88	26.4	31.1	-43.9	0.0	97	63000037	%
38	3	288	289	290	0	0	V	MV	M	0	0	16.31	9.08	21.19	36.1	53.0	-25.9	7.46	4.9	21.88	26.4	31.1	-43.9	0.541	98	63000038	%
																		32.55	16.64	21.22	47.8	74.7	-5.9	0.0	99	63000038	%
39	3	296	297	298	0	0	M	MO	O	0	0	31.69	16.9	8.99	48.1	70.2	23.4	32.51	16.56	21.12	47.7	75.0	-5.9	0.594	100	63000039	%
																		30.21	16.78	2.54	47.9	65.4	53.1	0.0	101	63000039	%
40	3	298	299	300	0	0	O	YO	Y	0	0	46.51	39.35	4.9	69.0	27.6	75.4	30.21	16.78	2.54	47.9	65.4	53.1	0.47	102	63000040	%
																		66.88	74.05	7.6	88.9	-7.6	98.6	0.0	103	63000040	%
41	3	306	307	308	0	0	Y	YL	L	0	0	27.96	40.59	7.13	69.8	-37.6	67.4	66.39	73.52	7.53	88.6	-7.6	98.4	0.528	104	63000041	%
																		9.64	20.74	6.84	52.6	-62.8	38.8	0.0	105	63000041	%

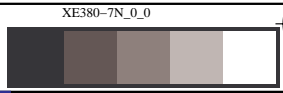
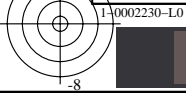
TUB registration: 20140801-XE38/XE38L0NA.TXT /PS
application for measurement of display or printer output, no separation
TUB material: code=rh4ta



see similar files: http://130.149.60.45/~farbmetrik/XE38/XE38.HTM
technical information: http://www.ps.bam.de or http://130.149.60.45/~farbmetrik

N	S	N1	N2	N3	N4	N5	NA1	NA2	NA3	NA4	NA5	X0	Y0	Z0	L*0	a*0	b*0	X1	Y1	Z1	L*1	a*1	b*1	VIM	no.	inr
1	3	1	2	3	0	0	W	CW	C	0	0	37.41	46.32	59.43	73.7	-19.6	-17.2	70.18	75.43	60.81	89.5	-2.2	8.7	0.505	0	64000001
																		17.21	26.57	53.54	58.5	-37.9	-37.5	0.0	1	64000001
2	3	7	8	9	0	0	W	VW	V	0	0	27.07	26.22	37.48	58.2	9.6	-19.5	70.17	75.41	60.69	89.5	-2.2	8.8	0.527	2	64000002
																		6.84	5.49	17.84	28.1	18.3	-39.1	0.0	3	64000002
3	3	13	14	15	0	0	W	MW	M	0	0	46.93	38.26	36.66	68.2	33.0	-1.2	70.23	75.46	60.54	89.6	-2.2	8.9	0.508	4	64000003
																		29.15	16.39	18.21	47.5	64.2	-6.5	0.0	5	64000003
4	3	19	20	21	0	0	W	OW	O	0	0	45.48	38.09	19.72	68.0	29.4	25.8	70.67	75.88	61.1	89.8	-2.1	8.8	0.465	6	64000004
																		27.37	16.11	3.05	47.1	58.7	44.8	0.0	7	64000004
5	3	25	26	27	0	0	W	YW	Y	0	0	60.34	64.29	20.89	84.1	-0.8	51.2	70.21	75.53	60.29	89.6	-2.3	9.2	0.565	8	64000005
																		59.91	63.78	6.8	83.8	-0.7	88.5	0.0	9	64000005
6	3	31	32	33	0	0	W	LW	L	0	0	29.12	39.62	23.33	69.2	-29.4	20.9	70.55	75.88	60.81	89.8	-2.3	9.0	0.512	10	64000006
																		9.49	18.44	5.75	50.0	-52.0	34.8	0.0	11	64000006
7	3	37	38	39	0	0	C	CN	N	0	0	10.47	7.63	3.05	33.2	28.0	20.8	26.97	15.82	3.0	46.7	58.8	44.5	0.438	12	64000007
																		3.27	3.5	3.21	21.9	-0.4	0.3	0.0	13	64000007
8	3	43	44	45	0	0	V	VN	N	0	0	4.65	4.25	8.4	24.5	8.6	-19.7	6.92	5.48	18.33	28.1	19.3	-40.2	0.484	14	64000008
																		3.32	3.55	3.27	22.1	-0.5	0.3	0.0	15	64000008
9	3	49	50	51	0	0	M	MN	N	0	0	10.91	7.74	8.17	33.4	30.4	-3.5	28.83	16.04	17.9	47.0	64.9	-6.6	0.487	16	64000009
																		3.27	3.49	3.22	21.9	-0.3	0.2	0.0	17	64000009
10	3	55	56	57	0	0	O	ON	N	0	0	10.47	7.63	3.05	33.2	28.0	20.8	26.97	15.82	3.0	46.7	58.8	44.5	0.48	18	64000010
																		3.27	3.5	3.21	21.9	-0.4	0.3	0.0	19	64000010
11	3	61	62	63	0	0	Y	YN	N	0	0	18.22	19.56	4.76	51.3	-1.3	41.8	59.87	63.66	7.18	83.7	-0.5	86.9	0.467	20	64000011
																		3.36	3.59	3.27	22.3	-0.5	0.5	0.0	21	64000011
12	3	67	68	69	0	0	L	LN	N	0	0	5.41	8.32	4.35	34.6	-25.5	15.3	9.64	18.38	6.24	49.9	-50.5	32.5	0.488	22	64000012
																		3.3	3.53	3.23	22.0	-0.5	0.3	0.0	23	64000012
13	3	209	210	211	0	0	W	C	N	0	0	17.85	27.5	53.88	59.4	-38.1	-36.4	71.21	76.6	61.16	90.1	-2.3	9.3	0.448	24	64000013
																		3.43	3.66	3.31	22.5	-0.3	0.6	0.0	25	64000013
14	3	215	216	217	0	0	W	V	N	0	0	7.2	5.75	18.39	28.8	19.0	-39.1	71.02	76.37	60.91	90.0	-2.3	9.3	0.591	26	64000014
																		3.46	3.68	3.33	22.6	-0.2	0.7	0.0	27	64000014
15	3	221	222	223	0	0	W	M	N	0	0	29.71	16.78	18.81	48.0	64.2	-6.9	70.75	76.04	60.81	89.8	-2.2	9.2	0.433	28	64000015
																		3.5	3.71	3.31	22.7	0.0	0.9	0.0	29	64000015
16	3	227	228	229	0	0	W	O	N	0	0	27.66	16.38	3.19	47.4	58.4	44.4	71.0	76.32	61.09	90.0	-2.2	9.1	0.475	30	64000016
																		3.51	3.73	3.36	22.8	-0.1	0.7	0.0	31	64000016
17	3	233	234	235	0	0	W	Y	N	0	0	60.73	64.72	7.05	84.3	-0.9	88.4	71.22	76.6	60.9	90.1	-2.3	9.5	0.367	32	64000017
																		3.41	3.63	3.22	22.4	-0.2	1.1	0.0	33	64000017
18	3	239	240	241	0	0	W	L	N	0	0	10.04	19.13	5.95	50.8	-51.1	35.3	71.0	76.38	60.85	90.0	-2.3	9.4	0.442	34	64000018
																		3.43	3.66	3.3	22.5	-0.4	0.7	0.0	35	64000018
19	3	245	246	247	0	0	C	V	M	0	0	7.34	5.86	18.46	29.0	19.1	-38.7	17.93	27.56	53.72	59.4	-37.9	-36.1	0.51	36	64000019
																		29.56	16.74	18.53	47.9	63.8	-6.4	0.0	37	64000019
20	3	251	252	253	0	0	M	O	Y	0	0	27.65	16.36	3.09	47.4	58.5	45.0	60.76	64.81	7.18	84.3	-1.0	88.0	0.343	38	64000020
																		29.87	16.86	18.92	48.0	64.4	-6.9	0.0	39	64000020
21	3	257	258	259	0	0	Y	L	C	0	0	9.96	18.96	5.85	50.6	-50.9	35.4	60.43	64.34	7.08	84.1	-0.7	87.9	0.508	40	64000021
																		17.54	27.14	52.95	59.1	-38.4	-36.0	0.0	41	64000021
22	3	263	264	265	0	0	V	C	L	0	0	17.81	27.46	53.88	59.4	-38.2	-36.4	7.17	5.69	18.36	28.6	19.4	-39.3	0.535	42	64000022
																		10.04	19.18	5.88	50.9	-51.4	35.7	0.0	43	64000022
23	3	269	270	271	0	0	L	Y	O	0	0	60.28	64.28	7.16	84.1	-1.0	87.5	10.17	19.39	5.91	51.1	-51.4	36.0	0.526	44	64000023
																		27.51	16.28	3.09	47.3	58.4	44.9	0.0	45	64000023
24	3	275	276	277	0	0	O	M	V	0	0	29.71	16.77	18.78	47.9	64.3	-6.8	27.66	16.36	3.17	47.4	58.5	44.5	0.559	46	64000024
																		7.34	5.82	18.64	28.9	19.6	-39.3	0.0	47	64000024
25	4	89	90	91	0	0	W	Wc	CW	0	0	52.71	60.24	60.72	81.9	-10.5	-4.3	70.97	76.26	61.51	89.9	-2.2	8.7	0.498	48	64000025
																		36.36	45.16	56.82	73.0	-19.8	-16.0	0.0	49	64000025
26	4	99	100	101	0	0	W	Wv	CW	0	0	45.94	47.12	48.62	74.2	4.1	-5.2	70.48	75.71	61.07	89.7	-2.1	8.6	0.483	50	64000026
																		26.63	25.81	36.12	57.8	9.5	-18.3	0.0	51	64000026

TUB registration: 20140801-XE38/XE38L0NA.TXT /PS
application for measurement of display or printer output, no separation
TUB material: code=rh4ta



see similar files: <http://130.149.60.45/~farbmetrik/XE38/XE38L0NA.TXT>
 technical information: <http://www.ps.bam.de> or <http://130.149.60.45/~farbmetrik>

N	S	N1	N2	N3	N4	N5	NA1	NA2	NA3	NA4	NA5	X0	Y0	Z0	L*0	a*0	b*0	X1	Y1	Z1	L*1	a*1	b*1	VIM	no.	inr	%
%1000*(CIEXYZ & DV) for all colours (a) of experiment, iimp=96, colour difference pairs MA_LW096=MEL_ADJACENT, xchart=23, xchart3=2, xchart4=3 %																											
27	4	109	110	111	0	0	W	Wm	CW	0	0	58.89	55.88	48.08	79.5	15.3	4.4	70.61	75.84	61.31	89.7	-2.1	8.5	0.505	52	64000027	%
																		46.49	37.94	35.34	67.9	32.8	0.1	0.0	53	64000027	%
28	4	119	120	121	0	0	W	Wo	CW	0	0	56.18	53.67	34.5	78.2	14.1	19.0	70.74	76.03	61.0	89.8	-2.2	9.0	0.525	54	64000028	%
																		44.96	37.44	17.44	67.6	30.0	29.8	0.0	55	64000028	%
29	4	129	130	131	0	0	W	Wy	CW	0	0	66.27	72.0	39.18	87.9	-3.8	29.5	71.03	76.32	61.36	90.0	-2.2	8.9	0.489	56	64000029	%
																		62.99	68.91	22.31	86.4	-4.7	52.5	0.0	57	64000029	%
30	4	139	140	141	0	0	W	Wl	CW	0	0	47.55	56.51	38.93	79.9	-15.6	15.9	70.92	76.17	61.7	89.9	-2.1	8.4	0.488	58	64000030	%
																		28.71	39.05	21.87	68.7	-29.2	22.9	0.0	59	64000030	%
31	4	91	92	93	0	0	CW	Cw	C	0	0	25.49	34.86	55.62	65.6	-28.7	-27.4	36.36	45.16	56.82	73.0	-19.8	-16.0	0.575	60	64000031	%
																		15.14	23.77	50.87	55.8	-38.0	-39.4	0.0	61	64000031	%
32	4	101	102	103	0	0	VW	Vw	V	0	0	15.03	13.62	27.53	43.7	13.7	-30.1	26.63	25.81	36.12	57.8	9.5	-18.3	0.466	62	64000032	%
																		6.75	5.59	18.33	28.4	16.2	-39.7	0.0	63	64000032	%
33	4	111	112	113	0	0	MW	Mw	M	0	0	37.18	25.66	25.78	57.7	48.7	-3.1	46.49	37.94	35.34	67.9	32.8	0.1	0.574	64	64000033	%
																		28.63	16.0	17.26	46.9	64.4	-5.3	0.0	65	64000033	%
34	4	121	122	123	0	0	OW	Ow	O	0	0	35.16	24.73	7.54	56.8	45.8	39.0	44.96	37.44	17.44	67.6	30.0	29.8	0.569	66	64000034	%
																		26.93	15.77	2.77	46.6	58.9	46.0	0.0	67	64000034	%
35	4	131	132	133	0	0	YW	Yw	Y	0	0	61.2	66.21	11.14	85.1	-3.0	75.8	62.99	68.91	22.31	86.4	-4.7	52.5	0.507	68	64000035	%
																		59.49	62.68	5.9	83.2	0.7	91.4	0.0	69	64000035	%
36	4	141	142	143	0	0	LW	Lw	L	0	0	17.59	27.98	12.47	59.8	-41.4	28.5	28.71	39.05	21.87	68.7	-29.2	22.9	0.537	70	64000036	%
																		8.75	17.27	5.79	48.6	-52.1	32.1	0.0	71	64000036	%
37	4	149	150	151	0	0	C	Cn	CN	0	0	10.35	15.49	30.2	46.3	-29.2	-29.8	15.06	23.72	50.74	55.8	-38.3	-39.3	0.437	72	64000037	%
																		7.0	9.79	16.56	37.4	-20.4	-20.1	0.0	73	64000037	%
38	4	159	160	161	0	0	V	Vn	VN	0	0	5.54	4.92	12.9	26.5	10.9	-30.0	6.54	5.43	17.84	27.9	16.0	-39.4	0.409	74	64000038	%
																		4.57	4.37	8.48	24.8	6.1	-19.4	0.0	75	64000038	%
39	4	169	170	171	0	0	M	Mn	MN	0	0	17.64	10.94	11.86	39.4	46.6	-4.8	28.22	15.75	16.81	46.6	64.2	-4.9	0.427	76	64000039	%
																		11.41	8.3	8.57	34.6	29.0	-2.9	0.0	77	64000039	%
40	4	179	180	181	0	0	O	On	ON	0	0	16.9	10.93	3.06	39.4	42.6	31.5	26.64	15.64	2.85	46.5	58.5	45.1	0.431	78	64000040	%
																		10.5	7.71	2.99	33.4	27.5	21.5	0.0	79	64000040	%
41	4	189	190	191	0	0	Y	Yn	YN	0	0	35.17	37.82	5.42	67.8	-1.8	67.1	59.71	62.93	5.83	83.4	0.6	92.0	0.53	80	64000041	%
																		18.22	19.62	4.63	51.4	-1.6	42.6	0.0	81	64000041	%

TUB registration: 20140801-XE38/XE38L0NA.TXT /.PS
 application for measurement of display or printer output, no separation
 TUB material: code=rh4ta

