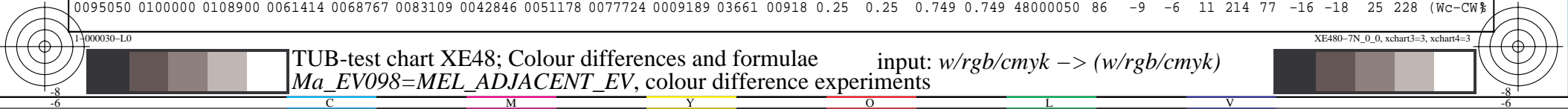


see similar files: http://130.149.60.45/~farbmetrik/XE48/XE48L0NP.PDF /.PS technical information: http://www.ps.bam.de or http://130.149.60.45/~farbmetrik

TUB registration: 20140801-XE48/XE48L0NP.PDF /.PS application for measurement of display or printer output

TUB material: code=rh4ta

Table with columns: %Xn, Yn, Zn, X0, Y0, Z0, X1, Y1, Z1, DV*DV, ds*DV, dE*DV, dE*DVRdE*DVRdE*DVmdE*DVm, no., L*0 a*0 b*0 C*0 h0, L*1 a*1 b*1 C*1 h1, CODE %



see similar files: http://130.149.60.45/~farbmetrik/XE48/XE48L0NP.PDF / .PS technical information: http://www.ps.bam.de or http://130.149.60.45/~farbmetrik

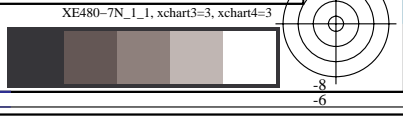
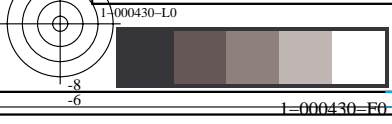
Table with columns: %L*0, a*0, b*0, C*ab0, hab0, L*1, a*1, b*1, C*ab1, hab1, DV, dE*ab, dE*94, dE*CM, dE*00, dE*85, NR, L*0, a*0, b*0, C*0, h0, L*1, a*1, b*1, C*1, h1, CODE. Rows represent color patches with corresponding data values.

TUB registration: 20140801-XE48/XE48L0NP.PDF / .PS application for measurement of display or printer output, no separation TUB material: code=rhata4ta

see similar files: http://130.149.60.45/~farbmetrik/XE48/XE48L0NP.PDF /.PS application for measurement of display or printer output, no separation

Table with columns: %L*0, a*0, b*0, C*ab0, hab0, L*1, a*1, b*1, C*ab1, hab1, DV, dE*ab, dE*94, dE*CM, dE*00, dE*85, NR, L*0, a*0, b*0, C*0, h0, L*1, a*1, b*1, C*1, h1, CODE %

TUB registration: 20140801-XE48/XE48L0NP.PDF /.PS TUB material: code=rh4ta



```

%L*0  a*0  b*0  C*ab0  hab0  L*1  a*1  b*1  C*ab1  hab1  DV  dE*ab dE*94 dE*CM dE*00 dE*85 NR  L*0 a*0 b*0 C*0 h0  L*1 a*1 b*1 C*1 h1  CODE %
%CIELAB data for all colour (a) of experiment, iimp=98, colour difference pairs Ma_EV098=MEL_ADJACENT_EV, ioutn=1, iouts=0 %
Minimum, maximum and average colour difference value
STRESS constant F and STRESS value S
iai+1 = 98, d_CIELABmina = 12.49, d_CIELABmaxa = 121.09, d_CIELABavea = 41.14
iai+1 = 98, CIELAB_Fa = 3.09, CIELAB_STRESSa = 36.18

iai+1 = 98, d_CIELCHmina = 12.49, d_CIELCHmaxa = 121.11, d_CIELCHavea = 41.15
iai+1 = 98, CIELCHFa = 3.09, CIELCHSTRESSa = 36.18

iai+1 = 98, d_C94LCHmina = 4.64, d_C94LCHmaxa = 72.88, d_C94LCHavea = 23.66
iai+1 = 98, C94LCHFa = 1.77, C94LCHSTRESSa = 36.92

iai+1 = 98, d_CMCLCHmina = 5.46, d_CMCLCHmaxa = 72.5, d_CMCLCHavea = 25.47
iai+1 = 98, CMCLCHFa = 1.89, CMCLCHSTRESSa = 35.59

iai+1 = 98, d_C00LCHmina = 4.1, d_C00LCHmaxa = 73.48, d_C00LCHavea = 22.81
iai+1 = 98, C00LCHFa = 1.71, C00LCHSTRESSa = 37.02

iai+1 = 98, d_C85LCHmina = 18.94, d_C85LCHmaxa = 583.86, d_C85LCHavea = 182.82
iai+1 = 98, C85LCHFa = 13.62, C85LCHSTRESSa = 37.34

```

see similar files: <http://130.149.60.45/~farbmetrik/XE48/XE48L0NP.PDF> / .PS
technical information: <http://www.ps.bam.de> or <http://130.149.60.45/~farbmetrik>

TUB registration: 20140801-XE48/XE48L0NP.PDF /.PS TUB material: code=rha4ta
application for measurement of display or printer output, no separation