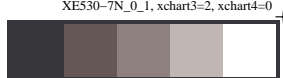
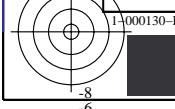


see similar files: http://130.149.60.45/~farbmetrik/XE53/XE53.HTM
technical information: http://www.ps.bam.de or http://130.149.60.45/~farbmetrik

TUB registration: 20140801-XE53/XE53LONP.PDF /.PS
application for measurement of display or printer output, no separation
TUB material: code=rh4ta

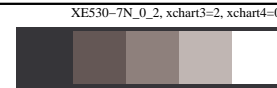
Table with columns: %Xn, Yn, Zn, X0, Y0, Z0, X1, Y1, Z1, DV*ab, dS*ab, dE*ab, dE*abrdE*DVRdE*abmdE*DVm no., L*0 a*0 b*0 C*0 h0, L*1 a*1 b*1 C*1 h1, CODE %



```
%Xn  Yn  Zn  X0  Y0  Z0  X1  Y1  Z1  DV*ab  dS*ab  dE*ab  dE*abrdE*DvrdE*abmdE*Dvm no.  L*0 a*0 b*0 C*0 h0  L*1 a*1 b*1 C*1 h1  CODE %  
%1000*(CIEXYZ & DV) for all colours (a) of experiment, , %iimp=98, colour difference pairs KS_EC098=KIT_SEPARATE_EC, ioutn=0, iouts=0 %  
Minimum, maximum and average colour difference value  
STRESS constant F and STRESS value S  
iai+1 = 98, d_CIELABmina = 12.49, d_CIELABmaxa = 121.09, d_CIELABavea = 41.14  
iai+1 = 98, CIELAB_Fa = 0.97, CIELAB_STRESSa = 13.65  
  
iai+1 = 98, d_CIELCHmina = 12.49, d_CIELCHmaxa = 121.11, d_CIELCHavea = 41.15  
iai+1 = 98, CIELCHFa = 0.97, CIELCHSTRESSa = 13.66  
  
iai+1 = 98, d_C94LCHmina = 4.64, d_C94LCHmaxa = 72.88, d_C94LCHavea = 23.66  
iai+1 = 98, C94LCHFa = 0.55, C94LCHSTRESSa = 24.12  
  
iai+1 = 98, d_CMCLCHmina = 5.46, d_CMCLCHmaxa = 72.5, d_CMCLCHavea = 25.47  
iai+1 = 98, CMCLCHFa = 0.59, CMCLCHSTRESSa = 21.98  
  
iai+1 = 98, d_C00LCHmina = 4.1, d_C00LCHmaxa = 73.48, d_C00LCHavea = 22.81  
iai+1 = 98, C00LCHFa = 0.53, C00LCHSTRESSa = 21.96  
  
iai+1 = 98, d_C85LCHmina = 18.94, d_C85LCHmaxa = 583.86, d_C85LCHavea = 182.82  
iai+1 = 98, C85LCHFa = 4.18, C85LCHSTRESSa = 29.29
```

see similar files: <http://130.149.60.45/~farbmetrik/XE53/XE53L0NP.PDF> / .PS
technical information: <http://www.ps.bam.de> or <http://130.149.60.45/~farbmetrik>

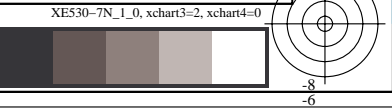
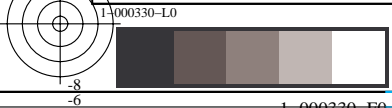
TUB registration: 20140801-XE53/XE53L0NP.PDF /.PS TUB material: code=rha4ta
application for measurement of display or printer output, no separation



see similar files: http://130.149.60.45/~farbmetrik/XE53/XE53LONP.PDF /PS
technical information: http://www.ps.bam.de or http://130.149.60.45/~farbmetrik

Table with columns: %L*0, a*0, b*0, C*ab0, hab0, L*1, a*1, b*1, C*ab1, hab1, DV, dE*ab, dE*94, dE*CM, dE*00, dE*85 NR, L*0, a*0, b*0, C*0, h0, L*1, a*1, b*1, C*1, h1, CODE %

TUB registration: 20140801-XE53/XE53LONP.PDF /PS
application for measurement of display or printer output, no separation
TUB material: code=rh4ta



http://130.149.60.45/~farbmetrik/XE53/XE53L0NP.PDF /PS; transfer output

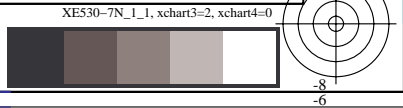
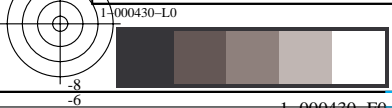
N: no 3D-linearization (OL) in file (F) or PS-startup (S), page 5/6

see similar files: http://130.149.60.45/~farbmetrik/XE53/XE53L0NP.PDF /PS; transfer output
technical information: http://www.ps.bam.de or http://130.149.60.45/~farbmetrik

TUB registration: 20140801-XE53/XE53L0NP.PDF /PS
application for measurement of display or printer output, no separation
TUB material: code=rh4ta

Table with columns: %L*0, a*0, b*0, C*ab0, hab0, L*1, a*1, b*1, C*ab1, hab1, DV, dE*ab, dE*94, dE*CM, dE*00, dE*85, NR, L*0, a*0, b*0, C*0, h0, L*1, a*1, b*1, C*1, h1, CODE %

TUB-test chart XE53; Colour differences and formulae input: w/rgb/cmyk -> (w/rgb/cmyk)
KS_EC098=KIT_SEPARATE_EC, colour difference experiments



```
%L*0 a*0 b*0 C*ab0 hab0 L*1 a*1 b*1 C*ab1 hab1 DV dE*ab dE*94 dE*CM dE*00 dE*85 NR L*0 a*0 b*0 C*0 h0 L*1 a*1 b*1 C*1 h1 CODE %  
%CIELAB data for all colour (a) of experiment, , %iimp=98, colour difference pairs KS_EC098=KIT_SEPARATE_EC, ioutn=0, iouts=0 %  
Minimum, maximum and average colour difference value  
STRESS constant F and STRESS value S  
iai+1 = 98, d_CIELABmina = 12.49, d_CIELABmaxa = 121.09, d_CIELABavea = 41.14  
iai+1 = 98, CIELAB_Fa = 0.97, CIELAB_STRESSa = 13.65  
  
iai+1 = 98, d_CIELCHmina = 12.49, d_CIELCHmaxa = 121.11, d_CIELCHavea = 41.15  
iai+1 = 98, CIELCHFa = 0.97, CIELCHSTRESSa = 13.66  
  
iai+1 = 98, d_C94LCHmina = 4.64, d_C94LCHmaxa = 72.88, d_C94LCHavea = 23.66  
iai+1 = 98, C94LCHFa = 0.55, C94LCHSTRESSa = 24.12  
  
iai+1 = 98, d_CMCLCHmina = 5.46, d_CMCLCHmaxa = 72.5, d_CMCLCHavea = 25.47  
iai+1 = 98, CMCLCHFa = 0.59, CMCLCHSTRESSa = 21.98  
  
iai+1 = 98, d_C00LCHmina = 4.1, d_C00LCHmaxa = 73.48, d_C00LCHavea = 22.81  
iai+1 = 98, C00LCHFa = 0.53, C00LCHSTRESSa = 21.96  
  
iai+1 = 98, d_C85LCHmina = 18.94, d_C85LCHmaxa = 583.86, d_C85LCHavea = 182.82  
iai+1 = 98, C85LCHFa = 4.18, C85LCHSTRESSa = 29.29
```

see similar files: <http://130.149.60.45/~farbmetrik/XE53/XE53L0NP.PDF> / .PS
technical information: <http://www.ps.bam.de> or <http://130.149.60.45/~farbmetrik>

TUB registration: 20140801-XE53/XE53L0NP.PDF /.PS TUB material: code=rha4ta
application for measurement of display or printer output, no separation

