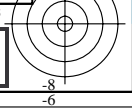
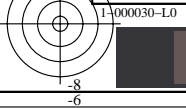


see similar files: http://130.149.60.45/~farbmetrik/XE66/XE66L0NP.PDF /.PS  
technical information: http://www.ps.bam.de or http://130.149.60.45/~farbmetrik

Table with columns: %Xn, Yn, Zn, X0, Y0, Z0, X1, Y1, DV\*DV, ds\*DV, dE\*DV, dE\*DVRdE\*DVRdE\*DVmdE\*DVm no., L\*0 a\*0 b\*0 C\*0 h0, L\*1 a\*1 b\*1 C\*1 h1, CODE %

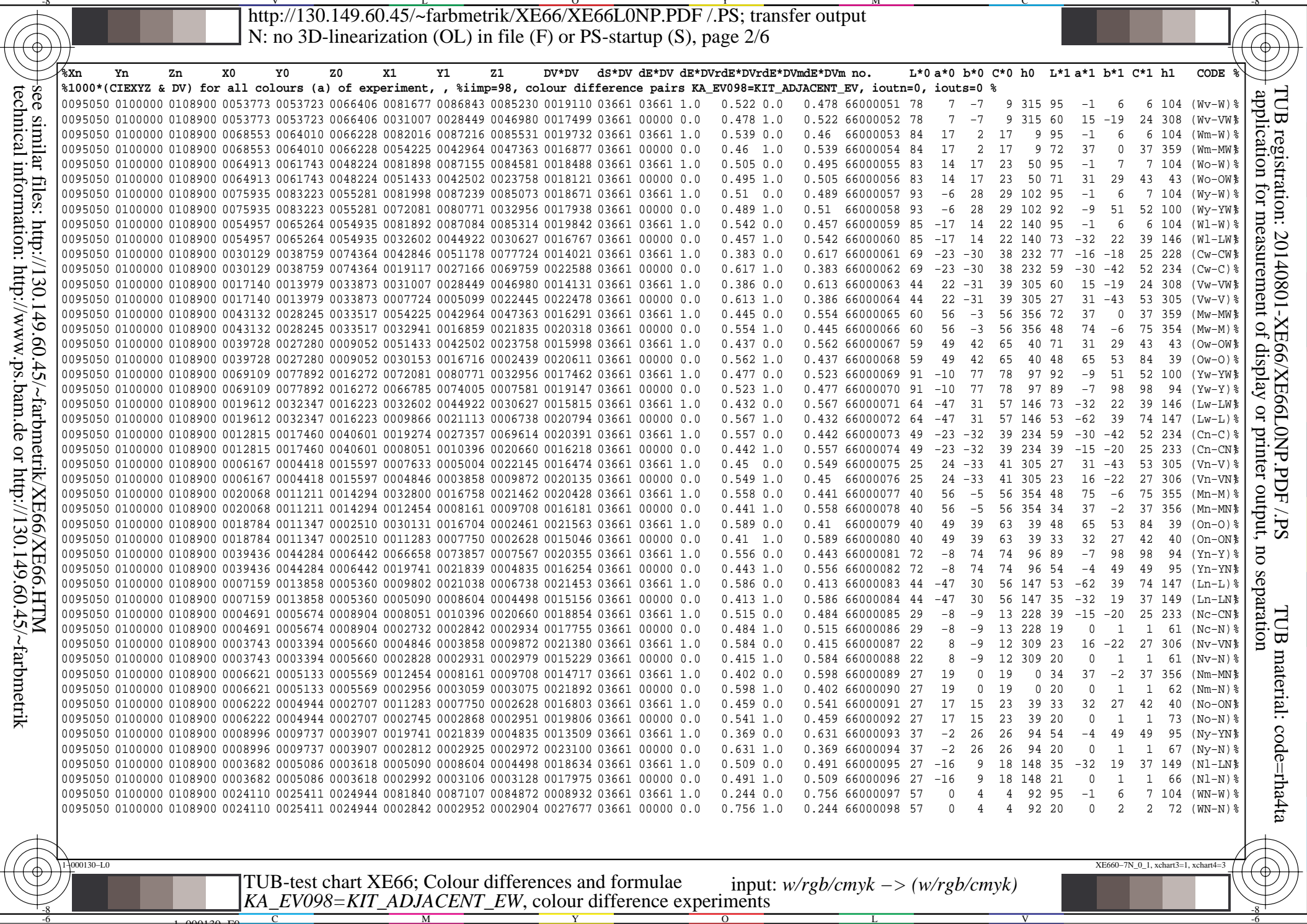
TUB registration: 20140801-XE66/XE66L0NP.PDF /.PS  
application for measurement of display or printer output  
TUB material: code=rha4ta



see similar files: http://130.149.60.45/~farbmetrik/XE66/XE66LONP.PDF /.PS application for measurement of display or printer output, no separation

TUB registration: 20140801-XE66/XE66LONP.PDF /.PS TUB material: code=rh4ta

Table with columns: %Xn, Yn, Zn, X0, Y0, Z0, X1, Y1, Z1, DV\*DV, ds\*DV, dE\*DV, dE\*DVRdE\*DVRdE\*DVmdE\*DVm no., L\*0 a\*0 b\*0 C\*0 h0, L\*1 a\*1 b\*1 C\*1 h1, CODE %



```
%Xn  Yn  Zn  X0  Y0  Z0  X1  Y1  Z1  DV*DV  dS*DV  dE*DV  dE*DVRdE*DVRdE*DVMdE*DVM no.  L*0 a*0 b*0 C*0 h0  L*1 a*1 b*1 C*1 h1  CODE %  
%1000*(CIEXYZ & DV) for all colours (a) of experiment, , %iimp=98, colour difference pairs KA_EV098=KIT_ADJACENT_EV, ioutn=0, iouts=0 %  
Minimum, maximum and average colour difference value  
STRESS constant F and STRESS value S  
iai+1 = 98, d_CIELABmina = 12.49, d_CIELABmaxa = 121.09, d_CIELABavea = 41.14  
iai+1 = 98, CIELAB_Fa = 2.2, CIELAB_STRESSa = 54.0  
  
iai+1 = 98, d_CIELCHmina = 12.49, d_CIELCHmaxa = 121.11, d_CIELCHavea = 41.15  
iai+1 = 98, CIELCHFa = 2.2, CIELCHSTRESSa = 54.0  
  
iai+1 = 98, d_C94LCHmina = 4.64, d_C94LCHmaxa = 72.88, d_C94LCHavea = 23.66  
iai+1 = 98, C94LCHFa = 1.28, C94LCHSTRESSa = 52.21  
  
iai+1 = 98, d_CMCLCHmina = 5.46, d_CMCLCHmaxa = 72.5, d_CMCLCHavea = 25.47  
iai+1 = 98, CMCLCHFa = 1.38, CMCLCHSTRESSa = 50.75  
  
iai+1 = 98, d_C00LCHmina = 4.1, d_C00LCHmaxa = 73.48, d_C00LCHavea = 22.81  
iai+1 = 98, C00LCHFa = 1.23, C00LCHSTRESSa = 52.82  
  
iai+1 = 98, d_C85LCHmina = 18.94, d_C85LCHmaxa = 583.86, d_C85LCHavea = 182.82  
iai+1 = 98, C85LCHFa = 9.95, C85LCHSTRESSa = 51.24
```

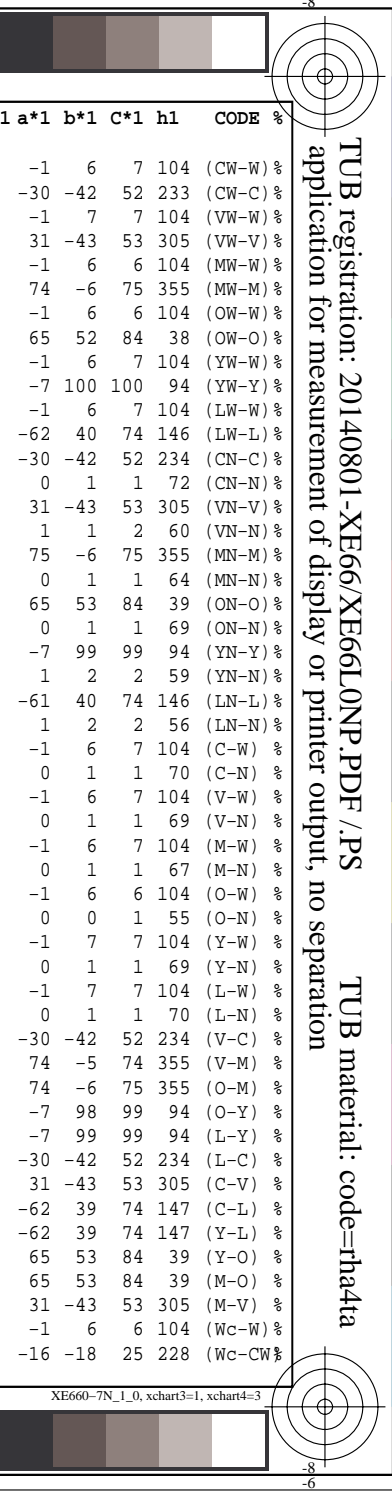
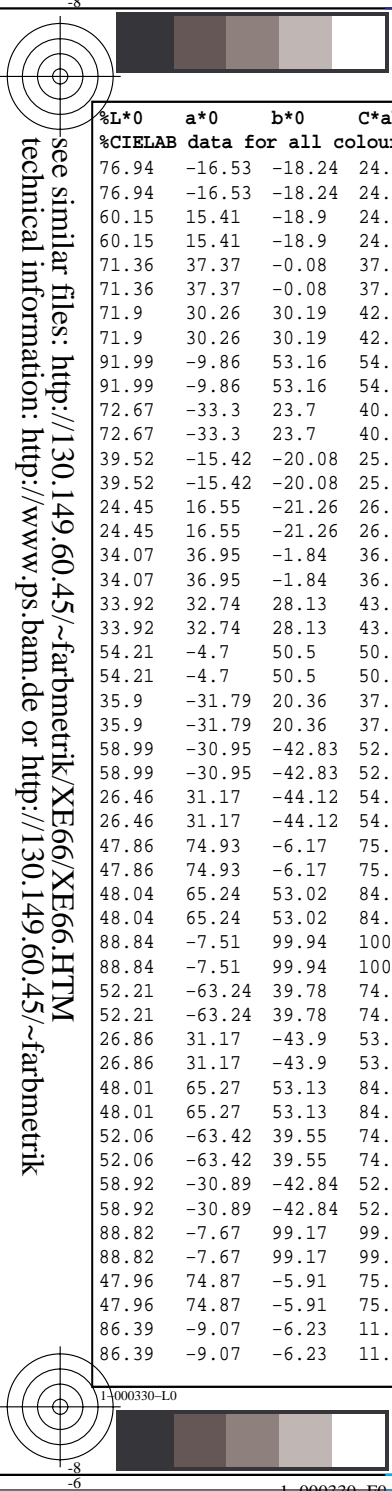
see similar files: <http://130.149.60.45/~farbmetrik/XE66/XE66L0NP.PDF> / .PS  
technical information: <http://www.ps.bam.de> or <http://130.149.60.45/~farbmetrik>

TUB registration: 20140801-XE66/XE66L0NP.PDF /.PS TUB material: code=rha4ta  
application for measurement of display or printer output, no separation

see similar files: http://130.149.60.45/~farbmetrik/XE66/XE66L0NP.PDF /PS application for measurement of display or printer output, no separation

Table with columns: %L\*0, a\*0, b\*0, C\*ab0, hab0, L\*1, a\*1, b\*1, C\*ab1, hab1, DV, dE\*ab, dE\*94, dE\*CM, dE\*00, dE\*85, NR, L\*0, a\*0, b\*0, C\*0, h0, L\*1, a\*1, b\*1, C\*1, h1, CODE %

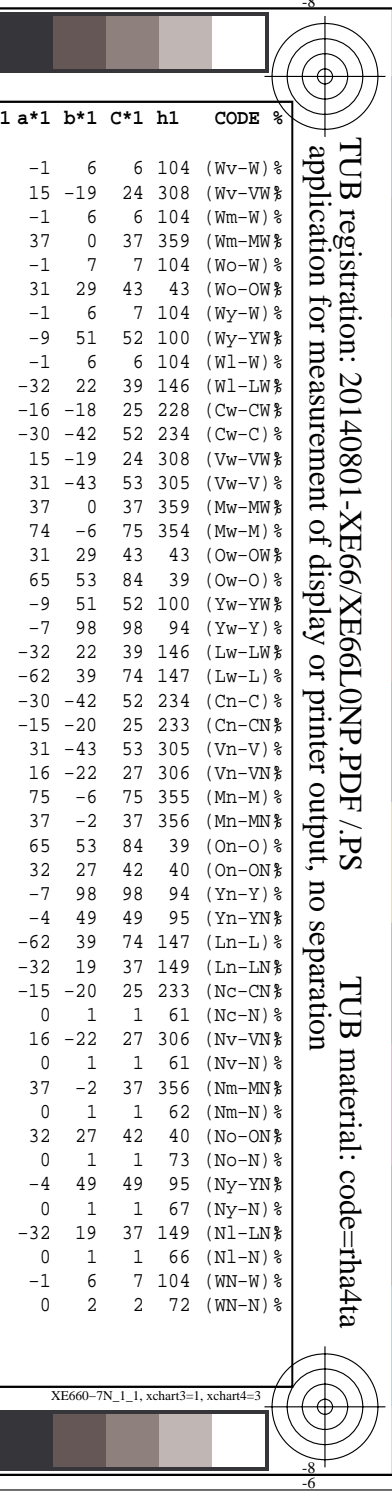
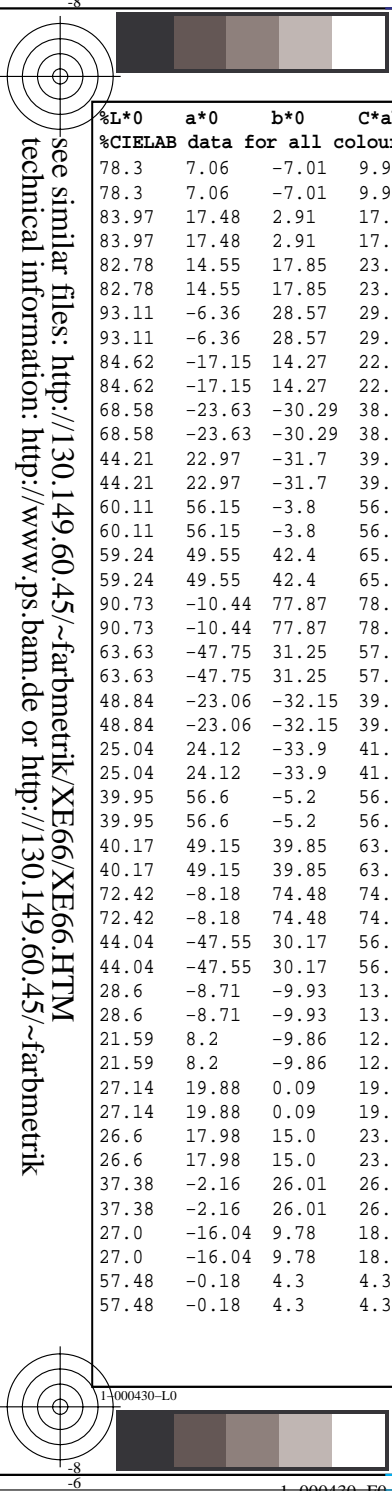
TUB registration: 20140801-XE66/XE66L0NP.PDF /PS TUB material: code=rh4ta



see similar files: http://130.149.60.45/~farbmetrik/XE66/XE66L0NP.PDF /.PS application for measurement of display or printer output, no separation

TUB registration: 20140801-XE66/XE66L0NP.PDF /.PS TUB material: code=rh4ta

Table with columns: %L\*0, a\*0, b\*0, C\*ab0, hab0, L\*1, a\*1, b\*1, C\*ab1, hab1, DV, dE\*ab, dE\*94, dE\*CM, dE\*00, dE\*85, NR, L\*0, a\*0, b\*0, C\*0, h0, L\*1, a\*1, b\*1, C\*1, h1, CODE %



```
%L*0 a*0 b*0 C*ab0 hab0 L*1 a*1 b*1 C*ab1 hab1 DV dE*ab dE*94 dE*CM dE*00 dE*85 NR L*0 a*0 b*0 C*0 h0 L*1 a*1 b*1 C*1 h1 CODE %  
%CIELAB data for all colour (a) of experiment, , %iimp=98, colour difference pairs KA_EV098=KIT_ADJACENT_EV, ioutn=0, iouts=0 %  
Minimum, maximum and average colour difference value  
STRESS constant F and STRESS value S  
iai+1 = 98, d_CIELABmina = 12.49, d_CIELABmaxa = 121.09, d_CIELABavea = 41.14  
iai+1 = 98, CIELAB_Fa = 2.2, CIELAB_STRESSa = 54.0  
  
iai+1 = 98, d_CIELCHmina = 12.49, d_CIELCHmaxa = 121.11, d_CIELCHavea = 41.15  
iai+1 = 98, CIELCHFa = 2.2, CIELCHSTRESSa = 54.0  
  
iai+1 = 98, d_C94LCHmina = 4.64, d_C94LCHmaxa = 72.88, d_C94LCHavea = 23.66  
iai+1 = 98, C94LCHFa = 1.28, C94LCHSTRESSa = 52.21  
  
iai+1 = 98, d_CMCLCHmina = 5.46, d_CMCLCHmaxa = 72.5, d_CMCLCHavea = 25.47  
iai+1 = 98, CMCLCHFa = 1.38, CMCLCHSTRESSa = 50.75  
  
iai+1 = 98, d_C00LCHmina = 4.1, d_C00LCHmaxa = 73.48, d_C00LCHavea = 22.81  
iai+1 = 98, C00LCHFa = 1.23, C00LCHSTRESSa = 52.82  
  
iai+1 = 98, d_C85LCHmina = 18.94, d_C85LCHmaxa = 583.86, d_C85LCHavea = 182.82  
iai+1 = 98, C85LCHFa = 9.95, C85LCHSTRESSa = 51.24
```

see similar files: <http://130.149.60.45/~farbmetrik/XE66/XE66L0NP.PDF> / .PS  
technical information: <http://www.ps.bam.de> or <http://130.149.60.45/~farbmetrik>

TUB registration: 20140801-XE66/XE66L0NP.PDF /.PS TUB material: code=rha4ta  
application for measurement of display or printer output, no separation

