

Table with columns: %Xn, Yn, Zn, X0, Y0, Z0, X1, Y1, Z1, DV*DV, ds*DV, de*DV, dE*DVrdE, dVrdE, dVmdE, dVm no., L*0 a*0 b*0 C*0 h0, L*1 a*1 b*1 C*1 h1, CODE %

see similar files: http://130.149.60.45/~farbmetrik/XE67/XE67L0NP.PDF /.PS application for measurement of display or printer output, no separation

TUB registration: 20140801-XE67/XE67L0NP.PDF /.PS TUB material: code=rh4ta

see similar files: <http://130.149.60.45/~farbmetrik/XE67/XE67L0NP.PDF /.PS>
technical information: <http://www.ps.bam.de> or <http://130.149.60.45/~farbmetrik>

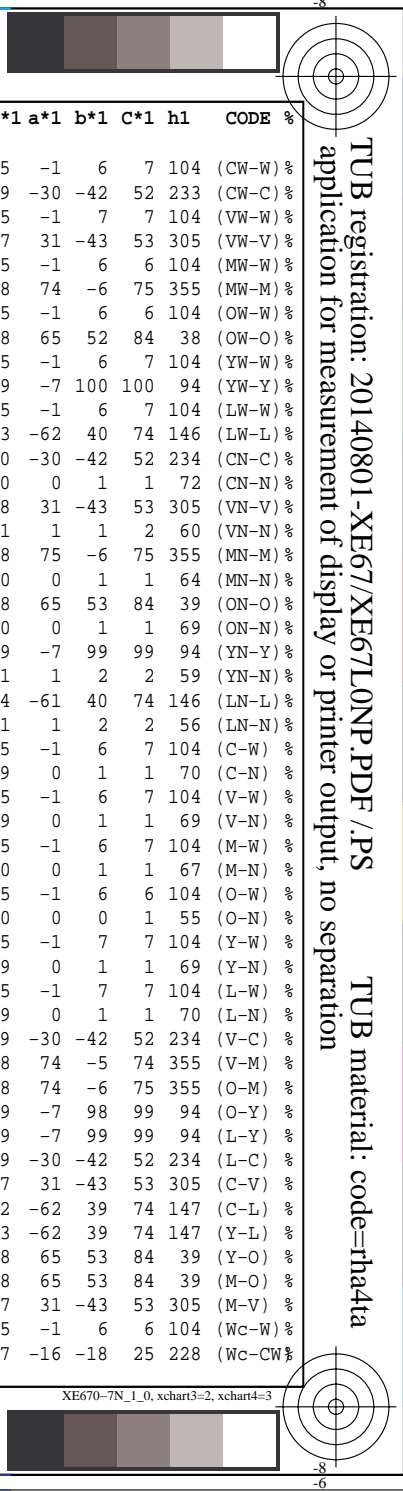
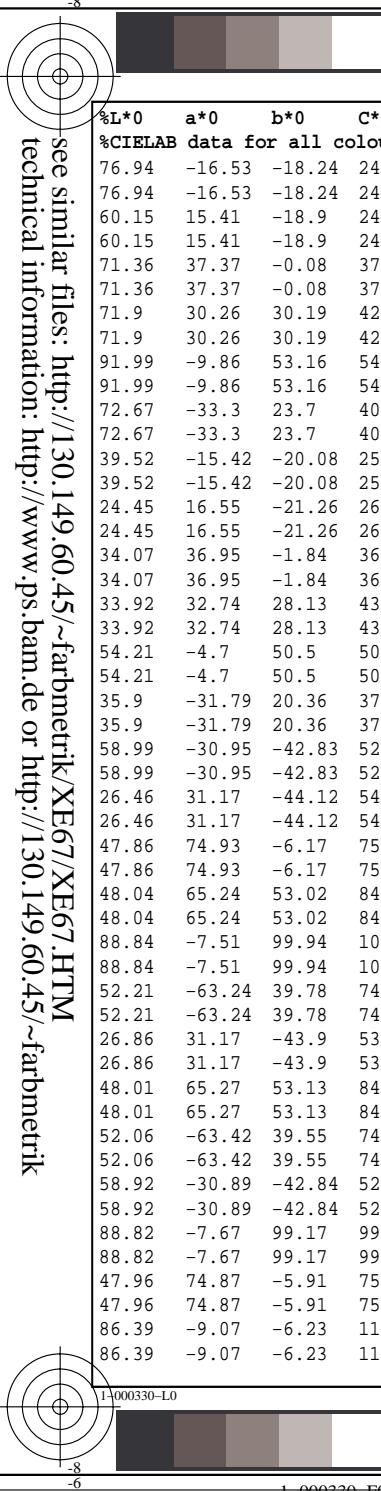
%Xn	Yn	Zn	X0	Y0	Z0	X1	Y1	Z1	DV*DV	ds*DV	dE*DV	dE*DVRdE*DVRdE*DVRdE*DVRdE*DVRdE*DVRdE*DVRdE*DVRdE*DVm	no.	L*0	a*0	b*0	C*0	h0	L*1	a*1	b*1	C*1	h1	CODE %
%1000*(CIEXYZ & DV) for all colours (a) of experiment, , %iimp=98, colour difference pairs KS_EV098=KIT_SEPARATE_EV, ioutn=0, iouts=0 %																								
Minimum, maximum and average colour difference value																								
STRESS constant F and STRESS value S																								
iai+1 = 98, d_CIELABmina = 12.49, d_CIELABmaxa = 121.09, d_CIELABavea = 41.14																								
iai+1 = 98, CIELAB_Fa = 2.21, CIELAB_STRESSa = 53.63																								
iai+1 = 98, d_CIELCHmina = 12.49, d_CIELCHmaxa = 121.11, d_CIELCHavea = 41.15																								
iai+1 = 98, CIELCHFa = 2.21, CIELCHSTRESSa = 53.63																								
iai+1 = 98, d_C94LCHmina = 4.64, d_C94LCHmaxa = 72.88, d_C94LCHavea = 23.66																								
iai+1 = 98, C94LCHFa = 1.28, C94LCHSTRESSa = 52.06																								
iai+1 = 98, d_CMCLCHmina = 5.46, d_CMCLCHmaxa = 72.5, d_CMCLCHavea = 25.47																								
iai+1 = 98, CMCLCHFa = 1.38, CMCLCHSTRESSa = 50.91																								
iai+1 = 98, d_C00LCHmina = 4.1, d_C00LCHmaxa = 73.48, d_C00LCHavea = 22.81																								
iai+1 = 98, C00LCHFa = 1.23, C00LCHSTRESSa = 52.71																								
iai+1 = 98, d_C85LCHmina = 18.94, d_C85LCHmaxa = 583.86, d_C85LCHavea = 182.82																								
iai+1 = 98, C85LCHFa = 9.97, C85LCHSTRESSa = 51.25																								

TUB registration: 20140801-XE67/XE67L0NP.PDF /.PS
application for measurement of display or printer output, no separation
TUB material: code=rha4ta

see similar files: http://130.149.60.45/~farbmetrik/XE67/XE67L0NP.PDF /.PS application for measurement of display or printer output, no separation

Table with columns: %L*0, a*0, b*0, C*ab0, hab0, L*1, a*1, b*1, C*ab1, hab1, DV, dE*ab, dE*94, dE*CM, dE*00, dE*85, NR, L*0, a*0, b*0, C*0, h0, L*1, a*1, b*1, C*1, h1, CODE %

TUB registration: 20140801-XE67/XE67L0NP.PDF /.PS TUB material: code=rh4ta




```
%L*0 a*0 b*0 C*ab0 hab0 L*1 a*1 b*1 C*ab1 hab1 DV dE*ab dE*94 dE*CM dE*00 dE*85 NR L*0 a*0 b*0 C*0 h0 L*1 a*1 b*1 C*1 h1 CODE %  
%CIELAB data for all colour (a) of experiment, , %iimp=98, colour difference pairs KS_EV098=KIT_SEPARATE_EV, ioutn=0, iouts=0 %  
Minimum, maximum and average colour difference value  
STRESS constant F and STRESS value S  
iai+1 = 98, d_CIELABmina = 12.49, d_CIELABmaxa = 121.09, d_CIELABavea = 41.14  
iai+1 = 98, CIELAB_Fa = 2.21, CIELAB_STRESSa = 53.63  
  
iai+1 = 98, d_CIELCHmina = 12.49, d_CIELCHmaxa = 121.11, d_CIELCHavea = 41.15  
iai+1 = 98, CIELCHFa = 2.21, CIELCHSTRESSa = 53.63  
  
iai+1 = 98, d_C94LCHmina = 4.64, d_C94LCHmaxa = 72.88, d_C94LCHavea = 23.66  
iai+1 = 98, C94LCHFa = 1.28, C94LCHSTRESSa = 52.06  
  
iai+1 = 98, d_CMCLCHmina = 5.46, d_CMCLCHmaxa = 72.5, d_CMCLCHavea = 25.47  
iai+1 = 98, CMCLCHFa = 1.38, CMCLCHSTRESSa = 50.91  
  
iai+1 = 98, d_C00LCHmina = 4.1, d_C00LCHmaxa = 73.48, d_C00LCHavea = 22.81  
iai+1 = 98, C00LCHFa = 1.23, C00LCHSTRESSa = 52.71  
  
iai+1 = 98, d_C85LCHmina = 18.94, d_C85LCHmaxa = 583.86, d_C85LCHavea = 182.82  
iai+1 = 98, C85LCHFa = 9.97, C85LCHSTRESSa = 51.25
```

see similar files: <http://130.149.60.45/~farbmetrik/XE67/XE67L0NP.PDF> / .PS
technical information: <http://www.ps.bam.de> or <http://130.149.60.45/~farbmetrik>

TUB registration: 20140801-XE67/XE67L0NP.PDF /.PS TUB material: code=rha4ta
application for measurement of display or printer output, no separation

