

see similar files: http://130.149.60.45/~farbmetrik/XE98/XE98LONA.TXT /PS  
technical information: http://www.ps.bam.de or http://130.149.60.45/~farbmetrik

%XS	YS	ZS	X0	Y0	Z0	X1	Y1	Z1	DV	dE*ab	dE*CH	dE*94	dE*CM	dE*00	dE*85	NR	Code	L*	a*	b*	
%1000*CIEXYZ & 100*dE*																					
data for all colour (a) of experiment, iimp=446, colour difference pairs SS_0446=BIGC_S_SG %																					
0094811	0100000	0107304	0022086	0015726	0008227	0021784	0015662	0008658	0001267	00191	00077	00098	00080	00436	18000000	(18000_SS)	47	37	22	%	
0094811	0100000	0107304	0022086	0015726	0008227	0021484	0015467	0007997	0001557	00138	00138	00071	00088	00075	00432	18000001	(18000_SS)	46	37	23	%
0094811	0100000	0107304	0022086	0015726	0008227	0021936	0015432	0008649	0002413	00236	00236	00145	00184	00155	00676	18000002	(18000_SS)	46	38	21	%
0094811	0100000	0107304	0022086	0015726	0008227	0021797	0015357	0007487	0001736	00200	00200	00098	00118	00100	00718	18000003	(18000_SS)	46	38	23	%
0094811	0100000	0107304	0022086	0015726	0008227	0022178	0015624	0008096	0001886	00104	00104	00041	00050	00041	00267	18000004	(18000_SS)	47	38	23	%
0094811	0100000	0107304	0022086	0015726	0008227	0021974	0015609	0007998	0001714	00057	00057	00030	00036	00031	00218	18000005	(18000_SS)	47	37	23	%
0094811	0100000	0107304	0022086	0015726	0008227	0022235	0015629	0008492	0002173	00168	00168	00098	00127	00106	00391	18000006	(18000_SS)	47	38	22	%
0094811	0100000	0107304	0022086	0015726	0008227	0021664	0015537	0007646	0002362	00185	00185	00113	00149	00123	00495	18000007	(18000_SS)	47	37	23	%
0094811	0100000	0107304	0022086	0015726	0008227	0021756	0015489	0008149	0001739	00045	00045	00034	00034	00033	00332	18000008	(18000_SS)	46	37	22	%
0094811	0100000	0107304	0022086	0015726	0008227	0021868	0015421	0009448	0003355	00478	00478	00278	00355	00299	01249	18000009	(18000_SS)	46	38	20	%
0094811	0100000	0107304	0022086	0015726	0008227	0021679	0015175	0007313	0001768	00248	00248	00119	00138	00120	00995	18000010	(18000_SS)	46	38	23	%
0094811	0100000	0107304	0022086	0015726	0008227	0021714	0015790	0008333	0001489	00211	00211	00085	00109	00089	00441	18000011	(18000_SS)	47	36	22	%
0094811	0100000	0107304	0022086	0015726	0008227	0021794	0015527	0007350	0002280	00269	00269	00150	00198	00163	00686	18000012	(18000_SS)	46	37	24	%
0094811	0100000	0107304	0022086	0015726	0008227	0022152	0015537	0008217	0002585	00146	00146	00075	00094	00079	00409	18000013	(18000_SS)	47	38	22	%
0094811	0100000	0107304	0022086	0015726	0008227	0021843	0015860	0008866	0001800	00264	00264	00094	00118	00097	00634	18000014	(18000_SS)	47	36	22	%
0094811	0100000	0107304	0022086	0015726	0008227	0022191	0015877	0008878	0001940	00188	00188	00095	00123	00102	00515	18000015	(18000_SS)	47	37	22	%
0094811	0100000	0107304	0022086	0015726	0008227	0022782	0016580	0010447	0003043	00547	00547	00280	00350	00298	01865	18000016	(18000_SS)	47	36	20	%
0094811	0100000	0107304	0022086	0015726	0008227	0021635	0015730	0007053	0002918	00475	00475	00284	00387	00313	01030	18000017	(18000_SS)	47	36	25	%
0094811	0100000	0107304	0022086	0015726	0008227	0021779	0015416	0008192	0001947	00080	00080	00058	00067	00060	00463	18000018	(18000_SS)	46	37	22	%
0094811	0100000	0107304	0022086	0015726	0008227	0022013	0015736	0008273	0001338	00041	00041	00014	00018	00014	00087	18000019	(18000_SS)	47	37	22	%
0094811	0100000	0107304	0022086	0015726	0008227	0022212	0015576	0009355	0003469	00431	00431	00257	00329	00277	01068	18000020	(18000_SS)	47	38	20	%
0094811	0100000	0107304	0022086	0015726	0008227	0021571	0015609	0007356	0003218	00333	00333	00200	00271	00220	00749	18000021	(18000_SS)	47	36	24	%
0094811	0100000	0107304	0022086	0015726	0008227	0021931	0015843	0006922	0003494	00520	00520	00301	00408	00330	01133	18000022	(18000_SS)	47	37	25	%
0094811	0100000	0107304	0031136	0035954	0028302	0031012	0035644	0030289	0002330	00339	00339	00214	00250	00210	01001	18000023	(18000_SS)	66	-10	12	%
0094811	0100000	0107304	0031136	0035954	0028302	0030703	0035316	0025434	0002516	00370	00370	00251	00271	00241	01107	18000024	(18000_SS)	66	-10	15	%
0094811	0100000	0107304	0031136	0035954	0028302	0031726	0036371	0029736	0002044	00179	00179	00105	00121	00108	00563	18000025	(18000_SS)	67	-10	13	%
0094811	0100000	0107304	0031136	0035954	0028302	0031574	0036032	0030048	0002115	00282	00282	00160	00192	00171	00763	18000026	(18000_SS)	67	-9	12	%
0094811	0100000	0107304	0031136	0035954	0028302	0030127	0035230	0025386	0002484	00389	00389	00229	00247	00216	01147	18000027	(18000_SS)	66	-11	15	%
0094811	0100000	0107304	0031136	0035954	0028302	0030703	0035799	0027719	0001660	00129	00129	00077	00086	00088	00289	18000028	(18000_SS)	66	-11	14	%
0094811	0100000	0107304	0031136	0035954	0028302	0030749	0035459	0026409	0001675	00231	00231	00156	00169	00149	00728	18000029	(18000_SS)	66	-10	15	%
0094811	0100000	0107304	0031136	0035954	0028302	0031188	0035620	0029813	0001976	00299	00299	00172	00205	00180	00833	18000030	(18000_SS)	66	-9	12	%
0094811	0100000	0107304	0031136	0035954	0028302	0031068	0035182	0027926	0002362	00242	00242	00171	00191	00205	00650	18000031	(18000_SS)	66	-9	13	%
0094811	0100000	0107304	0031136	0035954	0028302	0030464	0035292	0026449	0001514	00207	00207	00133	00143	00124	00730	18000032	(18000_SS)	66	-10	14	%
0094811	0100000	0107304	0031136	0035954	0028302	0031509	0035702	0028177	0002108	00221	00221	00158	00180	00194	00405	18000033	(18000_SS)	66	-9	13	%
0094811	0100000	0107304	0031136	0035954	0028302	0030694	0035598	0027651	0001127	00075	00075	00047	00049	00048	00298	18000034	(18000_SS)	66	-10	14	%
0094811	0100000	0107304	0031136	0035954	0028302	0030874	0035203	0027381	0001958	00167	00167	00134	00143	00150	00578	18000035	(18000_SS)	66	-9	14	%
0094811	0100000	0107304	0031136	0035954	0028302	0030645	0035536	0027003	0001055	00154	00154	00094	00103	00089	00509	18000036	(18000_SS)	66	-10	14	%
0094811	0100000	0107304	0031136	0035954	0028302	0030308	0034445	0026628	0002138	00160	00160	00145	00134	00136	01054	18000037	(18000_SS)	66	-10	14	%
0094811	0100000	0107304	0031136	0035954	0028302	0030823	0035536	0026406	0001256	00240	00240	00162	00176	00155	00729	18000038	(18000_SS)	66	-10	15	%
0094811	0100000	0107304	0031136	0035954	0028302	0030533	0035499	0028863	0001868	00165	00165	00127	00139	00127	00519	18000039	(18000_SS)	66	-10	13	%
0094811	0100000	0107304	0031136	0035954	0028302	0030081	0035207	0026496	0001707	00238	00238	00141	00152	00143	00772	18000040	(18000_SS)	66	-11	14	%
0094811	0100000	0107304	0031136	0035954	0028302	0030473	0035088	0028110	0001036	00116	00116	00086	00082	00077	00622	18000041	(18000_SS)	66	-10	13	%
0094811	0100000	0107304	0031136	0035954	0028302	0031308	0035208	0029187	0001320	00102	00102	00073	00081	00071	00338	18000042	(18000_SS)	67	-10	13	%
0094811	0100000	0107304	0031136	0035954	0028302	0031716	0036407	0029761	0001338	00173	00173	00104	00118	00103	00568	18000043	(18000_SS)	67	-10	13	%
0094811	0100000	0107304	0031136	0035954	0028302	0031622	0036261	0028965	0001206	00100	00100	00061	00068	00069	00302	18000044	(18000_SS)	67	-10	13	%
0094811	0100000	0107304	0031136	0035954	0028302	0031463	0036113	0029319	0001037	00147	00147	00084	00098	00087	00412	18000045	(18000_SS)	67	-10	13	%
0094811	0100000	0107304	0031136	0035954	0028302	0031353	0035776	0028171	0001388	00139	00139	00100	00112	00120	00258	18000046	(18000_SS)	66	-9	13	%
0094811	0100000	0107304	0031136	0035954	0028302	0030753	0035392	0028445	0001374	00113	00113	00074	00078	00070	00458	18000047	(18000_SS)	66	-10	13	%
0094811	0100000	0107304	0031136	0035954	0028302	0029984	0035189	0027127	0002126	00202	00202	00132	00140	00145	00647	18000048	(18000_SS)	66	-11	14	%
0094811	0100000	0107304	0031136	0035954	0028302	0031295	0035458	0029371	0002362	00318	00318	00182	00217	00213	00808	18000049	(18000_SS)	66	-9	12	%

TUB registration: 20140801-XE98/XE98LONA.TXT /PS  
application for measurement of display or printer output

%XS	YS	ZS	X0	Y0	Z0	X1	Y1	Z1	DV	dE*ab	dE*CH	dE*94	dE*CM	dE*00	dE*85	NR	Code	L*	a*	b*	
%1000*CIEXYZ & 100*dE*																					
data for all colour (a) of experiment, iimp=446, colour difference pairs SS_0446=BIGC_S_SG %																					
0094811	0100000	0107304	0031136	0035954	0028302	0031387	0035333	0028404	0002914	00317	00211	00244	00262	00697	18000050	(18000_SS)	66	-9	13	%	
0094811	0100000	0107304	0031136	0035954	0028302	0030933	0035625	0025930	0002724	00328	00328	00218	00238	00209	00931	18000051	(18000_SS)	66	-10	15	%
0094811	0100000	0107304	0031136	0035954	0028302	0031712	0035912	0029153	0002284	00261	00261	00157	00186	00195	00537	18000052	(18000_SS)	66	-9	13	%
0094811	0100000	0107304	0024951	0014418	0004204	0025133	0014124	0003984	0001721	00264	00264	00086	00110	00087	00700	18000053	(18000_SS)	45	59	37	%
0094811	0100000	0107304	0024951	0014418	0004204	0024687	0014337	0004659	0001428	00263	00263	00102	00137	00112	00417	18000054	(18000_SS)	45	57	35	%
0094811	0100000	0107304	0024951	0014418	0004204	0025376	0014574	0004719	0001467	00245	00245	00120	00158	00134	00456	18000055	(18000_SS)	45	58	35	%
0094811	0100000	0107304	0024951	0014418	0004204	0025112	0015114	0004825	0001750	00390	00390	00135	00163	00134	01328	18000056	(18000_SS)	45	56	36	%
0094811	0100000	0107304	0024951	0014418	0004204	0024769	0014346	0003781	0001446	00221	00221	00102	00137	00114	00343	18000057	(18000_SS)	45	58	38	%
0094811	0100000	0107304	0024951	0014418	0004204	0024908	0014104	0004011	0001302	00181	00181	00068	00082	00068	00616	18000058	(18000_SS)	45	59	37	%
0094811	0100000	0107304	0024951	0014418	0004204	0025187	0014897	0003540	0002617	00475	00475	00237	00319	00266	00996	18000059	(18000_SS)	45	57	39	%
0094811	0100000	0107304	0024951	0014418	0004204	0025244	0014522	0003906	0001274	00199	00199	00073	00099	00079	00315	18000060	(18000_SS)	45	58	37	%
0094811	0100000	0107304	0024951	0014418	0004204	0025041	0014801	0004226	0001625	00214	00214	00103	00132	00112	00718	18000061	(18000_SS)	45	57	37	%
0094811	0100000	0107304	0024951	0014418	0004204	0024387	0014451	0005001	0002040	00475	00475	00144	00198	00155	00802	18000062	(18000_SS)	45	56	34	%
0094811	0100000	0107304	0024951	0014418	0004204	0024087	0013952	0003238	0002173	00464	00464	00222	00297	00247	00979	18000063	(18000_SS)	45	57	39	%
0094811	0100000	0107304	0024951	0014418	0004204	0025298	0014756	0004122	0001600	00145	00145	00081	00101	00087	00549	18000064	(18000_SS)	45	57	37	%
0094811	0100000	0107304	0024951	0014418	0004204	0025275	0014151	0003627	0001628	00399	00399	00106	00142	00105	00830	18000065	(18000_SS)	45	59	38	%
0094811	0100000	0107304	0024951	0014418	0004204	0025208	0014257	0003700	0001499	00320	00320	00090	00121	00091	00601	18000066	(18000_SS)	45	59	38	%
0094811	0100000	0107304	0024951	0014418	0004204	0025420	0014833	0003548	0002459	00478	00478	00220	00296	00245	00879	18000067	(18000_SS)	45	57	39	%
0094811	0100000	0107304	0024951	0014418	0004204	0024920	0014112	0003403	0001481	00425	00425	00148	00197	00157	00833	18000068	(18000_SS)	45	59	38	%
0094811	0100000	0107304	0024951	0014418	0004204	0024627	0014704	0005265	0001578	00556	00556	00171	00234	00184	01089	18000069	(18000_SS)	45	56	34	%
0094811	0100000	0107304	0024951	0014418	0004204	0024353	0014398	0005049	0001635	00496	00496	00158	00218	00172	00820	18000070	(18000_SS)	45	56	34	%
0094811	0100000	0107304	0024951	0014418	0004204	0024636	0014726	0005380	0001413	00601	00601	00190	00259	00205	01177	18000071	(18000_SS)	45	56	34	%
0094811	0100000	0107304	0024951	0014418	0004204	0025111	0014668	0003834	0001897	00280	00280	00137	00183	00153	00550	18000072	(18000_SS)	45	57	38	%
0094811	0100000	0107304	0024951	0014418	0004204	0024950	0014227	0003420	0001582	00421	00421	00157	00212	00171	00700	18000073	(18000_SS)	45	58	38	%
0094811	0100000	0107304	0024951	0014418	0004204	0025099	0014353	0004775	0002259	00326	00326	00157	00208	00176	00527	18000074	(18000_SS)	45	58	35	%
0094811	0100000	0107304	0024951	0014418	0004204	0024189	0014083	0003497	0001775	00348	00348	00173	00231	00193	00722	18000075	(18000_SS)	45	57	38	%
0094811	0100000	0107304	0024951	0014418	0004204	0025106	0014713	0005498	0002577	00575	00575	00233	00311	00258	01093	18000076	(18000_SS)	45	57	34	%
0094811	0100000	0107304	0024951	0014418	0004204	0025478	0014661	0003398	0002094	00530	00530	00213	00288	00234	00779	18000077	(18000_SS)	45	58	39	%
0094811	0100000	0107304	0024951	0014418	0004204	0025462	0014627	0005121	0002226	00421	00421	00201	00264	00223	00760	18000078	(18000_SS)	45	58	34	%
0094811	0100000	0107304	0024951	0014418	0004204	0024879	0014205	0004338	0001503	00160	00160	00082	00106	00090	00424	18000079	(18000_SS)	45	58	36	%
0094811	0100000	0107304	0024951	0014418	0004204	0025095	0014565	0005038	0001496	00387	00387	00166	00221	00184	00676	18000080	(18000_SS)	45	58	34	%
0094811	0100000	0107304	0024951	0014418	0004204	0025136	0014439	0004477	0001317	00153	00153	00075	00099	00084	00244	18000081	(18000_SS)	45	58	36	%
0094811	0100000	0107304	0024951	0014418	0004204	0024881	0014728	0005136	0001267	00451	00451	00151	00203	00162	00934	18000082	(18000_SS)	45	57	34	%
0094811	0100000	0107304	0030111	0031842	0033909	0030107	0031717	0005273	000121	00121	00121	00120	00179	00129	00473	18000083	(18000_SS)	63	0	0	%
0094811	0100000	0107304	0030111	0031842	0033909	0029877	0032129	0037757	0005088	00494	00494	00486	00624	00484	01894	18000084	(18000_SS)	63	-1	-1	%
0094811	0100000	0107304	0030111	0031842	0033909	0029665	0031389	0034221	0002148	00113	00113	00112	00161	00110	00548	18000085	(18000_SS)	63	0	0	%
0094811	0100000	0107304	0030111	0031842	0033909	0030777	0032511	0033219	0002828	00196	00196	00192	00265	00185	00879	18000086	(18000_SS)	63	0	1	%
0094811	0100000	0107304	0030111	0031842	0033909	0030025	0031745	00035630	0003945	00240	00240	00237	00336	00232	00974	18000087	(18000_SS)	63	0	0	%
0094811	0100000	0107304	0030111	0031842	0033909	0030217	0032253	0037115	0004719	00374	00374	00369	00494	00365	01489	18000088	(18000_SS)	63	0	-1	%
0094811	0100000	0107304	0030111	0031842	0033909	0030367	0032013	0035988	0003634	00251	00251	00248	00350	00245	01011	18000089	(18000_SS)	63	0	0	%
0094811	0100000	0107304	0030111	0031842	0033909	0029990	0031769	0033148	0002062	00094	00094	00092	00135	00093	00370	18000090	(18000_SS)	63	0	0	%
0094811	0100000	0107304	0030111	0031842	0033909	0030379	0031721	0034056	0003820	00149	00149	00147	00217	00213	00333	18000091	(18000_SS)	63	0	0	%
0094811	0100000	0107304	0030111	0031842	0033909	0030218	0031710	0033321	0003415	00106	00106	00105	00155	00142	00310	18000092	(18000_SS)	63	0	0	%
0094811	0100000	0107304	0030111	0031842	0033909	0029791	0031380	0033384	0002273	00059	00059	00059	00074	00074	00357	18000093	(18000_SS)	63	0	0	%
0094811	0100000	0107304	0030111	0031842	0033909	0029934	0030834	0031069	0005020	00394	00394	00388	00509	00471	01360	18000094	(18000_SS)	63	1	1	%
0094811	0100000	0107304	0030111	0031842	0033909	0029622	0031308	0033472	0001567	00048	00048	00048	00048	00046	00402	18000095	(18000_SS)	63	0	0	%
0094811	0100000	0107304	0030111	0031842	0033909	0029845	0031384	0033139	0002448	00083	00083	00082	00114	00106	00395	18000096	(18000_SS)	63	0	0	%
0094811	0100000	0107304	0030111	0031842	0033909	0029754	0031580	0033721	0001847	00048	00048	00047	00066	00063	00217	18000097	(18000_SS)	63	0	0	%
0094811	0100000	0107304	0030111	0031842	0033909	0029955	0031710	0033162	0001363	00083	00083	00081	00119	00081	00338	18000098	(18000_SS)	63	0	0	%
0094811	0100000	0107304	0030111	0031842	0033909	0029495	0031239	0033589	0001342	00068	00068	00068	00081	00065	00486	18000099	(18000_SS)	63	0	0	%

see similar files: <http://130.149.60.45/~farbmetrik/XE98/XE98LONA.TXT> /PS  
 technical information: <http://www.ps.bam.de> or <http://130.149.60.45/~farbmetrik>

TUB registration: 20140801-

technical information: <http://www.ps.bam.de> or <http://130.149.60.45/~farbmetrik>

%XS	YS	ZS	X0	Y0	Z0	X1	Y1	Z1	DV	dE*ab	dE*CH	dE*94	dE*CM	dE*00	dE*85	NR	Code	L*	a*	b*
%1000*CIEXYZ & 100*dE* data for all colour (a) of experiment, iimp=446, colour difference pairs SS_0446=BIGC_S_SG %																				
0094811	0100000	0107304	0030111	0031842	0033909	0029261	0031186	0031481	0003534	00260	00260	00255	00344	00255	01067	18000100	(18000_SS)	63	0	1 %
0094811	0100000	0107304	0030111	0031842	0033909	0029061	0031028	0030455	0003713	00383	00383	00375	00486	00360	01535	18000101	(18000_SS)	63	0	2 %
0094811	0100000	0107304	0030111	0031842	0033909	0029667	0030724	0031052	0004866	00344	00344	00338	00447	00401	01327	18000102	(18000_SS)	63	0	1 %
0094811	0100000	0107304	0030111	0031842	0033909	0030540	0031529	0031883	0005070	00359	00359	00353	00474	00435	01077	18000103	(18000_SS)	63	1	1 %
0094811	0100000	0107304	0030111	0031842	0033909	0030615	0031082	0035060	0005872	00535	00535	00527	00674	00651	01515	18000104	(18000_SS)	63	2	0 %
0094811	0100000	0107304	0037963	0029885	0004641	0038100	0029770	0005958	0001990	00632	00632	00220	00371	00265	00578	18000105	(18000_SS)	62	34	60 %
0094811	0100000	0107304	0037963	0029885	0004641	0038450	0030175	0006129	0001872	00640	00640	00214	00356	00255	00630	18000106	(18000_SS)	62	34	60 %
0094811	0100000	0107304	0037963	0029885	0004641	0036888	0028345	0004220	0002105	00270	00270	00170	00210	00174	01355	18000107	(18000_SS)	61	35	63 %
0094811	0100000	0107304	0037963	0029885	0004641	0036764	0028279	0003860	0002080	00312	00312	00162	00169	00151	01413	18000108	(18000_SS)	61	35	64 %
0094811	0100000	0107304	0037963	0029885	0004641	0036742	0028226	0003702	0002001	00374	00374	00170	00176	00156	01474	18000109	(18000_SS)	61	35	64 %
0094811	0100000	0107304	0037963	0029885	0004641	0037441	0028824	0004147	0001951	00266	00266	00127	00162	00130	00991	18000110	(18000_SS)	61	35	63 %
0094811	0100000	0107304	0037963	0029885	0004641	0037293	0028369	0004837	0002914	00502	00502	00264	00418	00308	01450	18000111	(18000_SS)	61	36	61 %
0094811	0100000	0107304	0037963	0029885	0004641	0039005	0031231	0005564	0001847	00309	00309	00133	00136	00120	01140	18000112	(18000_SS)	62	33	62 %
0094811	0100000	0107304	0037963	0029885	0004641	0038966	0030818	0005745	0001191	00388	00388	00138	00190	00146	00824	18000113	(18000_SS)	62	34	61 %
0094811	0100000	0107304	0037963	0029885	0004641	0038615	0030637	0004016	0002158	00450	00450	00165	00246	00186	00677	18000114	(18000_SS)	62	33	65 %
0094811	0100000	0107304	0037963	0029885	0004641	0037694	0029268	0004009	0001510	00285	00285	00085	00103	00080	00618	18000115	(18000_SS)	61	34	64 %
0094811	0100000	0107304	0037963	0029885	0004641	0038833	0030751	0004995	0001421	00096	00096	00075	00065	00065	00691	18000116	(18000_SS)	62	34	63 %
0094811	0100000	0107304	0037963	0029885	0004641	0038966	0030928	0006206	0001575	00570	00570	00184	00264	00198	00997	18000117	(18000_SS)	62	33	60 %
0094811	0100000	0107304	0037963	0029885	0004641	0038568	0030256	0005406	0001184	00317	00317	00116	00188	00137	00413	18000118	(18000_SS)	62	34	61 %
0094811	0100000	0107304	0037963	0029885	0004641	0037766	0029186	0005516	0002427	00560	00560	00231	00390	00280	00803	18000119	(18000_SS)	61	35	60 %
0094811	0100000	0107304	0037963	0029885	0004641	0038001	0029456	0004841	0001775	00240	00240	00117	00195	00143	00494	18000120	(18000_SS)	61	35	62 %
0094811	0100000	0107304	0037963	0029885	0004641	0038991	0031111	0004139	0002857	00470	00470	00198	00283	00220	01030	18000121	(18000_SS)	62	33	65 %
0094811	0100000	0107304	0037963	0029885	0004641	0037450	0028709	0004987	0003372	00457	00457	00227	00365	00268	01134	18000122	(18000_SS)	61	35	61 %
0094811	0100000	0107304	0037963	0029885	0004641	0037888	0029183	0005515	0002577	00576	00576	00245	00418	00299	00844	18000123	(18000_SS)	61	35	60 %
0094811	0100000	0107304	0037963	0029885	0004641	0039191	0031383	0006799	0002194	00759	00759	00236	00324	00246	01428	18000124	(18000_SS)	62	33	59 %
0094811	0100000	0107304	0037963	0029885	0004641	0038442	0030483	0005511	0001506	00335	00335	00102	00140	00105	00583	18000125	(18000_SS)	62	33	61 %
0094811	0100000	0107304	0037963	0029885	0004641	0038806	0031078	0004094	0002688	00502	00502	00215	00316	00244	01039	18000126	(18000_SS)	62	33	65 %
0094811	0100000	0107304	0037963	0029885	0004641	0038103	0029798	0004663	0001130	00081	00081	00039	00065	00048	00162	18000127	(18000_SS)	62	34	63 %
0094811	0100000	0107304	0037963	0029885	0004641	0038354	0030044	0005919	0001883	00572	00572	00196	00328	00235	00535	18000128	(18000_SS)	62	34	60 %
0094811	0100000	0107304	0037963	0029885	0004641	0038769	0030822	0006122	0001485	00552	00552	00170	00243	00182	00926	18000129	(18000_SS)	62	33	60 %
0094811	0100000	0107304	0037963	0029885	0004641	0038873	0030997	0006158	0001385	00550	00550	00171	00231	00176	01050	18000130	(18000_SS)	62	33	60 %
0094811	0100000	0107304	0037963	0029885	0004641	0037618	0029271	0004153	0001324	00208	00208	00072	00082	00067	00575	18000131	(18000_SS)	61	34	64 %
0094811	0100000	0107304	0037963	0029885	0004641	0038244	0029959	0004232	0001227	00231	00231	00058	00085	00060	00209	18000132	(18000_SS)	62	34	64 %
0094811	0100000	0107304	0037963	0029885	0004641	0039808	0032348	0006160	0002538	00500	00500	00238	00244	00217	02046	18000133	(18000_SS)	63	32	61 %
0094811	0100000	0107304	0037963	0029885	0004641	0037183	0028575	0004075	0002330	00285	00285	00147	00178	00147	01189	18000134	(18000_SS)	61	35	63 %
0094811	0100000	0107304	0037963	0029885	0004641	0039239	0031738	0004993	0002946	00326	00326	00208	00262	00217	01543	18000135	(18000_SS)	62	32	63 %
0094811	0100000	0107304	0037963	0029885	0004641	0040002	0032468	0004742	0003011	00484	00484	00293	00370	00307	02077	18000136	(18000_SS)	63	32	65 %
0094811	0100000	0107304	0037963	0029885	0004641	0037887	0029376	0003820	0001707	00402	00402	00104	00137	00100	00607	18000137	(18000_SS)	61	35	65 %
0094811	0100000	0107304	0037963	0029885	0004641	0037431	0029001	0004552	0001918	00198	00198	00116	00164	00128	00790	18000138	(18000_SS)	61	35	63 %
0094811	0100000	0107304	0037963	0029885	0004641	0038418	0029993	0005193	0001793	00273	00273	00111	00188	00136	00296	18000139	(18000_SS)	62	34	62 %
0094811	0100000	0107304	0062675	0069008	0028592	0061633	0067735	0026681	0001123	00196	00196	00090	00089	00077	00543	18000140	(18000_SS)	86	-6	48 %
0094811	0100000	0107304	0062675	0069008	0028592	0061605	0067731	0027646	0001138	00076	00076	00066	00050	00046	00472	18000141	(18000_SS)	86	-6	48 %
0094811	0100000	0107304	0062675	0069008	0028592	0062187	0067846	0028850	0001718	00202	00202	00102	00105	00101	00490	18000142	(18000_SS)	86	-5	47 %
0094811	0100000	0107304	0062675	0069008	0028592	0062393	0068234	0030501	0002058	00362	00362	00122	00150	00123	00556	18000143	(18000_SS)	86	-5	46 %
0094811	0100000	0107304	0062675	0069008	0028592	0063110	0069172	0031982	0002388	00480	00480	00151	00194	00156	00685	18000144	(18000_SS)	87	-5	45 %
0094811	0100000	0107304	0062675	0069008	0028592	0062305	0068298	0031188	0002631	00445	00445	00144	00181	00146	00654	18000145	(18000_SS)	86	-5	45 %
0094811	0100000	0107304	0062675	0069008	0028592	0062041	0068055	0028810	0001865	00136	00136	00065	00064	00056	00376	18000146	(18000_SS)	86	-5	47 %
0094811	0100000	0107304	0062675	0069008	0028592	0062220	0068778	0028050	0001564	00084	00084	00036	00041	00039	00149	18000147	(18000_SS)	86	-6	48 %
0094811	0100000	0107304	0062675	0069008	0028592	0062402	0069368	0028192	0002191	00167	00167	00082	00090	00090	00266	18000148	(18000_SS)	87	-6	48 %
0094811	0100000	0107304	0062675	0069008	0028592	0062135	0068444	0030667	0002330	00353	00353	00117	00145	00119	00515	18000149	(18000_SS)	86	-6	46 %

TUB registration: 20140801-XE98/XE98LONA.TXT /PS application for measurement of display or printer output, no separation TUB material: code=rh4ta

see similar files: http://130.149.60.45/~farbmetrik/XE98/XE98LONA.TXT /PS application for measurement of display or printer output, no separation technical information: http://www.ps.bam.de or http://130.149.60.45/~farbmetrik

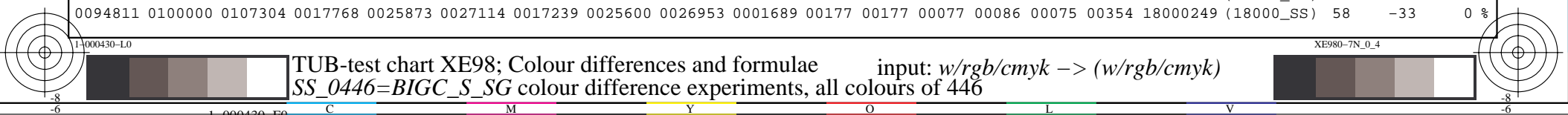
TUB registration: 20140801-XE98/XE98LONA.TXT /PS TUB material: code=rh4ta

Table with 19 columns: %XS, YS, ZS, X0, Y0, Z0, X1, Y1, Z1, DV, dE\*ab, dE\*CH, dE\*94, dE\*CM, dE\*00, dE\*85, NR, Code, L\*, a\*, b\*. Contains 100 rows of color difference data.

see similar files: http://130.149.60.45/~farbmetrik/XE98/XE98LONA.TXT /PS  
technical information: http://www.ps.bam.de or http://130.149.60.45/~farbmetrik

TUB registration: 20140801-XE98/XE98LONA.TXT /PS  
application for measurement of display or printer output, no separation  
TUB material: code=rh4ta

%XS	YS	ZS	X0	Y0	Z0	X1	Y1	Z1	DV	dE*ab	dE*CH	dE*94	dE*CM	dE*00	dE*85	NR	Code	L*	a*	b*
%1000*CIEXYZ & 100*dE*																				
data for all colour (a) of experiment, iimp=446, colour difference pairs SS_0446=BIGC_S_SG %																				
0094811	0100000	0107304	0035445	0033334	0021075	0034984	0033877	0023645	0002946	00514	00514	00246	00321	00277	01229	18000200	(18000_SS)	65	11	20
0094811	0100000	0107304	0035445	0033334	0021075	0035465	0033336	0019629	0002635	00272	00272	00144	00210	00151	00623	18000201	(18000_SS)	64	13	23
0094811	0100000	0107304	0035445	0033334	0021075	0035762	0033104	0020328	0001746	00216	00216	00114	00170	00125	00472	18000202	(18000_SS)	64	14	22
0094811	0100000	0107304	0035445	0033334	0021075	0035223	0033323	0022784	0002026	00315	00315	00155	00220	00165	00763	18000203	(18000_SS)	64	13	20
0094811	0100000	0107304	0035445	0033334	0021075	0035367	0032983	0020301	0001539	00137	00137	00070	00084	00071	00396	18000204	(18000_SS)	64	13	22
0094811	0100000	0107304	0035445	0033334	0021075	0034865	0032698	0022505	0002431	00350	00350	00203	00346	00224	00938	18000205	(18000_SS)	64	13	20
0094811	0100000	0107304	0035445	0033334	0021075	0035232	0033660	0024065	0003072	00515	00515	00244	00318	00260	01286	18000206	(18000_SS)	65	12	20
0094811	0100000	0107304	0035445	0033334	0021075	0035780	0033017	0021517	0002495	00256	00256	00184	00366	00219	00560	18000207	(18000_SS)	64	14	21
0094811	0100000	0107304	0035445	0033334	0021075	0035447	0033936	0024646	0002842	00579	00579	00276	00363	00296	01502	18000208	(18000_SS)	65	12	19
0094811	0100000	0107304	0035445	0033334	0021075	0035636	0032776	0020874	0002384	00265	00265	00183	00344	00214	00646	18000209	(18000_SS)	64	14	22
0094811	0100000	0107304	0035445	0033334	0021075	0035628	0033155	0021533	0001524	00165	00165	00118	00231	00140	00367	18000210	(18000_SS)	64	14	21
0094811	0100000	0107304	0035445	0033334	0021075	0035641	0033187	0022237	0001879	00258	00258	00172	00333	00200	00603	18000211	(18000_SS)	64	14	21
0094811	0100000	0107304	0035445	0033334	0021075	0035637	0033523	0022904	0002044	00301	00301	00165	00273	00181	00756	18000212	(18000_SS)	65	13	20
0094811	0100000	0107304	0035445	0033334	0021075	0034834	0033027	0020831	0002284	00104	00104	00072	00124	00084	00287	18000213	(18000_SS)	64	13	22
0094811	0100000	0107304	0035445	0033334	0021075	0035024	0033977	0025654	0003398	00789	00789	00366	00462	00405	02000	18000214	(18000_SS)	65	11	18
0094811	0100000	0107304	0035445	0033334	0021075	0034763	0033037	0021082	0001639	00138	00138	00083	00135	00097	00329	18000215	(18000_SS)	64	12	22
0094811	0100000	0107304	0035445	0033334	0021075	0035002	0033110	0020544	0001496	00100	00100	00072	00131	00085	00268	18000216	(18000_SS)	64	13	22
0094811	0100000	0107304	0035445	0033334	0021075	0035266	0033177	0022761	0002495	00324	00324	00176	00290	00193	00793	18000217	(18000_SS)	64	13	20
0094811	0100000	0107304	0035445	0033334	0021075	0034590	0033100	0021317	0002022	00225	00225	00132	00218	00157	00460	18000218	(18000_SS)	64	12	22
0094811	0100000	0107304	0035445	0033334	0021075	0035598	0033003	0021868	0002839	00254	00254	00179	00355	00211	00595	18000219	(18000_SS)	64	14	21
0094811	0100000	0107304	0025459	0035171	0013332	0024349	0034070	0011976	0001005	00242	00242	00111	00111	00098	00859	18000220	(18000_SS)	65	-30	42
0094811	0100000	0107304	0025459	0035171	0013332	0025510	0035052	0014634	0001805	00331	00331	00145	00150	00137	00520	18000221	(18000_SS)	66	-30	39
0094811	0100000	0107304	0025459	0035171	0013332	0024387	0034326	0012090	0001187	00277	00277	00105	00115	00096	00726	18000222	(18000_SS)	66	-31	42
0094811	0100000	0107304	0025459	0035171	0013332	0025012	0034923	0012878	0001080	00135	00135	00048	00055	00045	00262	18000223	(18000_SS)	66	-30	41
0094811	0100000	0107304	0025459	0035171	0013332	0026163	0035597	0015757	0001742	00538	00538	00189	00223	00188	00925	18000224	(18000_SS)	66	-29	38
0094811	0100000	0107304	0025459	0035171	0013332	0024546	0034418	0012153	0001154	00250	00250	00094	00104	00086	00652	18000225	(18000_SS)	66	-31	42
0094811	0100000	0107304	0025459	0035171	0013332	0025493	0035290	0014292	0001734	00219	00219	00098	00100	00092	00355	18000226	(18000_SS)	66	-30	40
0094811	0100000	0107304	0025459	0035171	0013332	0024713	0034579	0011032	0001518	00545	00545	00197	00220	00184	00901	18000227	(18000_SS)	66	-30	44
0094811	0100000	0107304	0025459	0035171	0013332	0026066	0035526	0015532	0001637	00493	00493	00173	00205	00172	00837	18000228	(18000_SS)	66	-29	38
0094811	0100000	0107304	0025459	0035171	0013332	0026639	0035468	0016745	0002073	00794	00794	00268	00329	00274	01321	18000229	(18000_SS)	66	-29	37
0094811	0100000	0107304	0025459	0035171	0013332	0026683	0036347	0016042	0001998	00501	00501	00197	00218	00189	01164	18000230	(18000_SS)	66	-29	38
0094811	0100000	0107304	0025459	0035171	0013332	0025186	0034972	0012978	0000920	00080	00080	00028	00032	00026	00185	18000231	(18000_SS)	66	-30	41
0094811	0100000	0107304	0025459	0035171	0013332	0026121	0035361	0015907	0002047	00618	00618	00206	00253	00209	01001	18000232	(18000_SS)	66	-29	38
0094811	0100000	0107304	0025459	0035171	0013332	0025652	0035151	0014352	0000856	00265	00265	00088	00107	00088	00406	18000233	(18000_SS)	66	-29	40
0094811	0100000	0107304	0025459	0035171	0013332	0025630	0034840	0012920	0001217	00194	00194	00108	00100	00099	00339	18000234	(18000_SS)	66	-29	41
0094811	0100000	0107304	0025459	0035171	0013332	0025383	0034970	0012735	0001139	00129	00129	00064	00062	00059	00242	18000235	(18000_SS)	66	-30	41
0094811	0100000	0107304	0025459	0035171	0013332	0025139	0034938	0012766	0000987	00127	00127	00043	00050	00041	00254	18000236	(18000_SS)	66	-30	41
0094811	0100000	0107304	0025459	0035171	0013332	0024810	0034500	0013774	0001385	00212	00212	00111	00106	00101	00540	18000237	(18000_SS)	66	-30	40
0094811	0100000	0107304	0025459	0035171	0013332	0024826	0034772	0013122	0001318	00139	00139	00073	00069	00066	00332	18000238	(18000_SS)	66	-31	41
0094811	0100000	0107304	0025459	0035171	0013332	0026650	0035974	0016754	0002236	00722	00722	00252	00302	00254	01327	18000239	(18000_SS)	66	-29	37
0094811	0100000	0107304	0025459	0035171	0013332	0025954	0035364	0015295	0001898	00464	00464	00158	00190	00158	00752	18000240	(18000_SS)	66	-29	39
0094811	0100000	0107304	0025459	0035171	0013332	0024540	0034781	0011959	0001909	00401	00401	00125	00153	00120	00638	18000241	(18000_SS)	66	-31	42
0094811	0100000	0107304	0025459	0035171	0013332	0024349	0034175	0010951	0001582	00523	00523	00193	00213	00179	01052	18000242	(18000_SS)	65	-31	43
0094811	0100000	0107304	0025459	0035171	0013332	0025784	0035262	0014935	0002110	00387	00387	00134	00159	00133	00614	18000243	(18000_SS)	66	-29	39
0094811	0100000	0107304	0025459	0035171	0013332	0025269	0034897	0014464	0001738	00312	00312	00129	00138	00123	00508	18000244	(18000_SS)	66	-30	39
0094811	0100000	0107304	0025459	0035171	0013332	0024724	0034750	0012091	0001600	00315	00315	00100	00122	00097	00554	18000245	(18000_SS)	66	-31	42
0094811	0100000	0107304	0025459	0035171	0013332	0025264	0034954	0011900	0001381	00342	00342	00138	00146	00129	00529	18000246	(18000_SS)	66	-30	43
0094811	0100000	0107304	0025459	0035171	0013332	0024327	0034314	0012391	0001652	00241	00241	00104	00107	00094	00695	18000247	(18000_SS)	66	-31	41
0094811	0100000	0107304	0017768	0025873	0027114	0016808	0024634	0024948	0002255	00183	00183	00152	00135	00143	01278	18000248	(18000_SS)	57	-32	1
0094811	0100000	0107304	0017768	0025873	0027114	0017239	0025600	0026953	0001689	00177	00177	00077	00086	00075	00354	18000249	(18000_SS)	58	-33	0



see similar files: <http://130.149.60.45/~farbmetrik/XE98/XE98.HTM>  
 technical information: <http://www.ps.bam.de> or <http://130.149.60.45/~farbmetrik>

%XS	YS	ZS	X0	Y0	Z0	X1	Y1	Z1	DV	dE*ab	dE*CH	dE*94	dE*CM	dE*00	dE*85	NR	Code	L*	a*	b*	%																				
%1000*CIEXYZ & 100*dE*																						data for all colour (a)		of experiment, iimp=446, colour difference pairs SS_0446=BIGC_S_SG %																	
0094811	0100000	0107304	0017768	0025873	0027114	0017530	0025574	0029244	0003333	00373	00373	00251	00235	00251	01601	18000250	(18000_SS)	58	-32	0	%																				
0094811	0100000	0107304	0017768	0025873	0027114	0017857	0025636	0028667	0003000	00312	00312	00196	00191	00197	01198	18000251	(18000_SS)	58	-31	0	%																				
0094811	0100000	0107304	0017768	0025873	0027114	0018686	0025749	0027254	0002982	00537	00537	00219	00268	00235	00749	18000252	(18000_SS)	58	-29	0	%																				
0094811	0100000	0107304	0017768	0025873	0027114	0017103	0025766	0028384	0003286	00381	00381	00192	00197	00188	00987	18000253	(18000_SS)	58	-34	0	%																				
0094811	0100000	0107304	0017768	0025873	0027114	0018240	0025575	0029017	0003387	00505	00505	00278	00289	00285	01537	18000254	(18000_SS)	58	-30	0	%																				
0094811	0100000	0107304	0017768	0025873	0027114	0018205	0025507	0028401	0003129	00462	00462	00236	00254	00243	01239	18000255	(18000_SS)	58	-30	0	%																				
0094811	0100000	0107304	0017768	0025873	0027114	0017155	0025070	0028032	0003107	00284	00284	00199	00185	00196	01374	18000256	(18000_SS)	58	-32	0	%																				
0094811	0100000	0107304	0017768	0025873	0027114	0016784	0025253	0025853	0002595	00303	00303	00142	00152	00137	00796	18000257	(18000_SS)	58	-33	1	%																				
0094811	0100000	0107304	0017768	0025873	0027114	0017601	0025452	0027594	0002427	00171	00171	00109	00105	00108	00718	18000258	(18000_SS)	58	-32	0	%																				
0094811	0100000	0107304	0017768	0025873	0027114	0017448	0025607	0027564	0001725	00132	00132	00084	00080	00083	00540	18000259	(18000_SS)	58	-32	0	%																				
0094811	0100000	0107304	0017768	0025873	0027114	0018539	0025905	0026913	0002631	00396	00396	00163	00196	00172	00553	18000260	(18000_SS)	58	-30	1	%																				
0094811	0100000	0107304	0017768	0025873	0027114	0018260	0025834	0026598	0002223	00287	00287	00125	00145	00130	00478	18000261	(18000_SS)	58	-31	1	%																				
0094811	0100000	0107304	0017768	0025873	0027114	0017085	0024954	0024851	0002635	00227	00227	00166	00153	00160	01196	18000262	(18000_SS)	57	-32	2	%																				
0094811	0100000	0107304	0017768	0025873	0027114	0016673	0025044	0026138	0001976	00268	00268	00131	00138	00126	00847	18000263	(18000_SS)	58	-33	1	%																				
0094811	0100000	0107304	0017768	0025873	0027114	0017940	0025683	0027081	0001840	00173	00173	00073	00085	00075	00295	18000264	(18000_SS)	58	-31	0	%																				
0094811	0100000	0107304	0017768	0025873	0027114	0018058	0026113	0027479	0001857	00063	00063	00034	00035	00033	00242	18000265	(18000_SS)	58	-32	0	%																				
0094811	0100000	0107304	0017768	0025873	0027114	0017230	0025699	0029478	0003516	00444	00444	00272	00259	00269	01669	18000266	(18000_SS)	58	-33	0	%																				
0094811	0100000	0107304	0017768	0025873	0027114	0018319	0025906	0028155	0002334	00319	00319	00153	00168	00157	00748	18000267	(18000_SS)	58	-31	0	%																				
0094811	0100000	0107304	0017768	0025873	0027114	0017616	0025664	0027400	0002169	00081	00081	00056	00052	00055	00377	18000268	(18000_SS)	58	-32	0	%																				
0094811	0100000	0107304	0017768	0025873	0027114	0017948	0025840	0029302	0003111	00354	00354	00231	00221	00232	01431	18000269	(18000_SS)	58	-31	0	%																				
0094811	0100000	0107304	0017413	0026713	0028234	0017292	0025718	0026111	0002026	00389	00389	00193	00202	00192	01177	18000270	(18000_SS)	58	-36	1	%																				
0094811	0100000	0107304	0017413	0026713	0028234	0017375	0027334	0026768	0002674	00425	00425	00231	00223	00225	01414	18000271	(18000_SS)	59	-39	2	%																				
0094811	0100000	0107304	0017413	0026713	0028234	0017768	0027033	0028933	0001496	00088	00088	00050	00049	00049	00369	18000272	(18000_SS)	59	-37	0	%																				
0094811	0100000	0107304	0017413	0026713	0028234	0016091	0024787	0026342	0001478	00193	00193	00185	00159	00168	01739	18000273	(18000_SS)	58	-37	0	%																				
0094811	0100000	0107304	0017413	0026713	0028234	0016905	0026270	0027122	0001374	00146	00146	00083	00080	00080	00581	18000274	(18000_SS)	59	-38	1	%																				
0094811	0100000	0107304	0017413	0026713	0028234	0017423	0025936	0027052	0001621	00333	00333	00144	00161	00144	00806	18000275	(18000_SS)	58	-36	0	%																				
0094811	0100000	0107304	0017413	0026713	0028234	0017977	0026983	0031416	0003602	00464	00464	00282	00267	00287	01807	18000276	(18000_SS)	59	-36	-1	%																				
0094811	0100000	0107304	0017413	0026713	0028234	0017433	0026541	0029289	0003125	00202	00202	00123	00116	00124	00797	18000277	(18000_SS)	59	-37	0	%																				
0094811	0100000	0107304	0017413	0026713	0028234	0017331	0026507	0028063	0001693	00043	00043	00024	00024	00022	00186	18000278	(18000_SS)	59	-37	0	%																				
0094811	0100000	0107304	0017413	0026713	0028234	0017677	0027012	0029117	0001965	00091	00091	00061	00055	00059	00439	18000279	(18000_SS)	59	-37	0	%																				
0094811	0100000	0107304	0017413	0026713	0028234	0017075	0026313	0028113	0001299	00063	00063	00048	00043	00045	00402	18000280	(18000_SS)	59	-37	0	%																				
0094811	0100000	0107304	0017413	0026713	0028234	0017779	0027043	0028906	0001374	00086	00086	00049	00048	00047	00363	18000281	(18000_SS)	59	-37	0	%																				
0094811	0100000	0107304	0017413	0026713	0028234	0016702	0026338	0023941	0003523	00670	00670	00399	00372	00386	02436	18000282	(18000_SS)	59	-38	3	%																				
0094811	0100000	0107304	0017413	0026713	0028234	0018011	0026256	0026708	0002610	00533	00533	00222	00257	00230	00983	18000283	(18000_SS)	59	-35	1	%																				
0094811	0100000	0107304	0017413	0026713	0028234	0018483	0027401	0033001	0004064	00649	00649	00394	00375	00403	02524	18000284	(18000_SS)	59	-36	-2	%																				
0094811	0100000	0107304	0017413	0026713	0028234	0018221	0027279	0031271	0003433	00413	00413	00246	00235	00249	01588	18000285	(18000_SS)	59	-36	-1	%																				
0094811	0100000	0107304	0017413	0026713	0028234	0017438	0026589	0029644	0003018	00238	00238	00149	00138	00150	00973	18000286	(18000_SS)	59	-37	0	%																				
0094811	0100000	0107304	0017413	0026713	0028234	0017604	0026706	0029820	0002875	00259	00259	00156	00148	00158	01002	18000287	(18000_SS)	59	-37	0	%																				
0094811	0100000	0107304	0017413	0026713	0028234	0017732	0027106	0029689	0002298	00158	00158	00104	00095	00103	00727	18000288	(18000_SS)	59	-37	0	%																				
0094811	0100000	0107304	0017413	0026713	0028234	0017281	0026436	0028151	0001621	00057	00057	00035	00033	00034	00277	18000289	(18000_SS)	59	-37	0	%																				
0094811	0100000	0107304	0017413	0026713	0028234	0017442	0026966	0028924	0002054	00108	00108	00056	00055	00055	00353	18000290	(18000_SS)	59	-38	0	%																				
0094811	0100000	0107304	0017413	0026713	0028234	0016869	0026421	0026768	0002345	00256	00256	00132	00131	00130	00802	18000291	(18000_SS)	59	-38	1	%																				
0094811	0100000	0107304	0017413	0026713	0028234	0016789	0026356	0024474	0003294	00575	00575	00345	00322	00336	02124	18000292	(18000_SS)	59	-38	3	%																				
0094811	0100000	0107304	0017413	0026713	0028234	0016810	0026145	0025797	0002638	00310	00310	00192	00178	00188	01267	18000293	(18000_SS)	58	-38	2	%																				
0094811	0100000	0107304	0015600	0019652	0027230	0015219	0018627	0028520	0003666	00510	00510	00400	00422	00396	02399	18000294	(18000_SS)	51	-15	-12	%																				
0094811	0100000	0107304	0015600	0019652	0027230	0015566	0019041	0025581	0001922	00324	00324	00183	00212	00214	01043	18000295	(18000_SS)	51	-15	-9	%																				
0094811	0100000	0107304	0015600	0019652	0027230	0016283	0020266	0029355	0002928	00233	00233	00184	00191	00179	01147	18000296	(18000_SS)	52	-16	-11	%																				
0094811	0100000	0107304	0015600	0019652	0027230	0014376	0018443	0025209	0002162	00205	00205	00177	00172	00180	01473	18000297	(18000_SS)	51	-17	-9	%																				
0094811	0100000	0107304	0015600	0019652	0027230	0015173	0019438	0028228	0002452	00245	00245	00139	00153	00137	01007	18000298	(18000_SS)	51	-17	-11	%																				
0094811	0100000	0107304	0015600	0019652	0027230	0015310	0018828	0026434	0002395	00262	00262	00186	00199	00207																											

see similar files: http://130.149.60.45/~farbmetrik/XE98/XE98LONA.TXT /PS  
 technical information: http://www.ps.bam.de or http://130.149.60.45/~farbmetrik

%XS	YS	ZS	X0	Y0	Z0	X1	Y1	Z1	DV	dE*ab	dE*CH	dE*94	dE*CM	dE*00	dE*85	NR	Code	L*	a*	b*
%1000*CIEXYZ & 100*dE* data for all colour (a) of experiment, iimp=446, colour difference pairs SS_0446=BIGC_S_SG %																				
0094811	0100000	0107304	0015600	0019652	0027230	0015004	0018829	0027284	0002173	02005	00205	00167	00169	00163	01315	18000300	(18000_SS)	51	-16	-11
0094811	0100000	0107304	0015600	0019652	0027230	0015052	0018707	0025501	0001660	00203	00203	00142	00146	00151	01170	18000301	(18000_SS)	51	-15	-9
0094811	0100000	0107304	0015600	0019652	0027230	0015035	0019207	0026719	0001614	00124	00124	00084	00087	00090	00562	18000302	(18000_SS)	51	-17	-10
0094811	0100000	0107304	0015600	0019652	0027230	0015586	0019777	0028375	0002022	00166	00166	00101	00110	00097	00722	18000303	(18000_SS)	52	-17	-11
0094811	0100000	0107304	0015600	0019652	0027230	0014868	0018752	0026810	0002237	00156	00156	00134	00131	00131	01224	18000304	(18000_SS)	51	-16	-10
0094811	0100000	0107304	0015600	0019652	0027230	0015260	0018669	0027955	0003415	00439	00439	00346	00366	00351	01997	18000305	(18000_SS)	51	-15	-11
0094811	0100000	0107304	0015600	0019652	0027230	0016566	0020115	0029778	0003548	00442	00442	00340	00366	00351	01552	18000306	(18000_SS)	52	-15	-11
0094811	0100000	0107304	0015600	0019652	0027230	0015523	0018944	0025540	0002405	00343	00343	00197	00227	00232	01105	18000307	(18000_SS)	51	-15	-9
0094811	0100000	0107304	0015600	0019652	0027230	0015653	0019046	0025248	0002420	00391	00391	00216	00255	00254	01245	18000308	(18000_SS)	51	-15	-9
0094811	0100000	0107304	0015600	0019652	0027230	0016462	0020015	0029762	0003720	00445	00445	00343	00369	00351	01591	18000309	(18000_SS)	52	-15	-11
0094811	0100000	0107304	0015600	0019652	0027230	0015049	0019272	0028682	0003068	00329	00329	00202	00216	00190	01529	18000310	(18000_SS)	51	-17	-11
0094811	0100000	0107304	0015600	0019652	0027230	0014839	0019202	0028739	0003072	00396	00396	00228	00245	00220	01692	18000311	(18000_SS)	51	-17	-11
0094811	0100000	0107304	0015600	0019652	0027230	0014683	0018983	0028000	0002864	00339	00339	00198	00212	00195	01530	18000312	(18000_SS)	51	-17	-11
0094811	0100000	0107304	0015600	0019652	0027230	0015004	0018361	0027581	0003634	00458	00458	00366	00383	00370	02276	18000313	(18000_SS)	51	-15	-11
0094811	0100000	0107304	0014268	0019028	0034396	0013543	0018948	0030462	0003749	00672	00672	00460	00447	00414	02622	18000314	(18000_SS)	51	-23	-19
0094811	0100000	0107304	0014268	0019028	0034396	0014793	0019596	0033778	0001465	00210	00210	00122	00127	00116	01242	18000315	(18000_SS)	51	-21	-20
0094811	0100000	0107304	0014268	0019028	0034396	0014485	0019083	0031774	0002496	00383	00383	00192	00213	00184	01803	18000316	(18000_SS)	51	-21	-19
0094811	0100000	0107304	0014268	0019028	0034396	0014639	0019099	0031697	0002302	00427	00427	00195	00227	00195	01892	18000317	(18000_SS)	51	-20	-19
0094811	0100000	0107304	0014268	0019028	0034396	0014759	0019088	0030859	0002882	00567	00567	00256	00303	00260	02464	18000318	(18000_SS)	51	-20	-19
0094811	0100000	0107304	0014268	0019028	0034396	0014765	0019047	0030159	0003339	00660	00660	00303	00359	00309	02902	18000319	(18000_SS)	51	-20	-18
0094811	0100000	0107304	0014268	0019028	0034396	0014252	0019436	0033571	0001339	00291	00291	00201	00196	00180	01150	18000320	(18000_SS)	51	-22	-20
0094811	0100000	0107304	0014268	0019028	0034396	0013945	0019247	0033801	0001764	00336	00336	00217	00213	00195	00830	18000321	(18000_SS)	51	-23	-21
0094811	0100000	0107304	0014268	0019028	0034396	0014442	0020064	0034950	0002777	00442	00442	00293	00285	00268	01548	18000322	(18000_SS)	51	-23	-21
0094811	0100000	0107304	0014268	0019028	0034396	0013826	0018878	0030744	0003447	00514	00514	00342	00340	00308	02296	18000323	(18000_SS)	51	-22	-19
0094811	0100000	0107304	0014268	0019028	0034396	0014825	0019713	0034505	0001403	00145	00145	00105	00102	00100	01068	18000324	(18000_SS)	51	-21	-21
0094811	0100000	0107304	0014268	0019028	0034396	0013954	0019738	0031256	0004803	00797	00797	00547	00526	00494	03085	18000325	(18000_SS)	51	-24	-18
0094811	0100000	0107304	0014268	0019028	0034396	0014070	0019053	0036089	0003246	00255	00255	00110	00125	00106	01066	18000326	(18000_SS)	51	-22	-22
0094811	0100000	0107304	0014268	0019028	0034396	0014198	0019260	0036793	0003471	00310	00310	00137	00153	00131	01289	18000327	(18000_SS)	51	-22	-23
0094811	0100000	0107304	0014268	0019028	0034396	0014436	0019977	0035084	0002379	00394	00394	00258	00252	00238	01363	18000328	(18000_SS)	51	-23	-21
0094811	0100000	0107304	0014268	0019028	0034396	0014612	0019713	0037915	0003770	00349	00349	00176	00187	00166	01612	18000329	(18000_SS)	51	-22	-23
0094811	0100000	0107304	0014268	0019028	0034396	0014394	0019668	0036928	0003368	00322	00322	00151	00165	00149	01176	18000330	(18000_SS)	51	-22	-22
0094811	0100000	0107304	0014268	0019028	0034396	0015098	0019693	0036953	0003374	00275	00275	00195	00191	00174	01180	18000331	(18000_SS)	51	-20	-22
0094811	0100000	0107304	0014268	0019028	0034396	0014588	0019078	0036196	0003737	00282	00282	00191	00190	00166	01118	18000332	(18000_SS)	51	-20	-22
0094811	0100000	0107304	0014268	0019028	0034396	0014642	0019555	0034968	0001584	00075	00075	00068	00062	00066	00659	18000333	(18000_SS)	51	-21	-21
0094811	0100000	0107304	0014268	0019028	0034396	0014744	0019293	0035691	0002975	00199	00199	00138	00136	00122	00658	18000334	(18000_SS)	51	-20	-22
0094811	0100000	0107304	0014268	0019028	0034396	0014876	0019250	0036671	0004131	00362	00362	00248	00247	00216	01277	18000335	(18000_SS)	51	-20	-23
0094811	0100000	0107304	0014268	0019028	0034396	0015426	0019792	0035786	0003896	00333	00333	00213	00217	00202	01045	18000336	(18000_SS)	51	-20	-21
0094811	0100000	0107304	0009637	0009376	0033219	0009742	0009335	0034118	0001211	00179	00179	00076	00092	00041	00763	18000337	(18000_SS)	37	6	-45
0094811	0100000	0107304	0009637	0009376	0033219	0009555	0009107	0032633	0001525	00161	00161	00103	00121	00113	00734	18000338	(18000_SS)	36	6	-44
0094811	0100000	0107304	0009637	0009376	0033219	0008874	0008790	0031609	0001723	00189	00189	00142	00162	00133	01345	18000339	(18000_SS)	36	5	-44
0094811	0100000	0107304	0009637	0009376	0033219	0009751	0009499	0035153	0001433	00219	00219	00078	00094	00096	01015	18000340	(18000_SS)	37	6	-45
0094811	0100000	0107304	0009637	0009376	0033219	0009755	0009482	0035289	0001920	00242	00242	00083	00100	00094	01133	18000341	(18000_SS)	37	6	-45
0094811	0100000	0107304	0009637	0009376	0033219	0009073	0008747	0030794	0001231	00185	00185	00134	00151	00136	01373	18000342	(18000_SS)	36	6	-43
0094811	0100000	0107304	0009637	0009376	0033219	0008956	0008728	0030791	0001715	00177	00177	00131	00147	00109	01402	18000343	(18000_SS)	36	6	-43
0094811	0100000	0107304	0009637	0009376	0033219	0009591	0009261	0032153	0001912	00124	00124	00058	00070	00086	00535	18000344	(18000_SS)	37	6	-43
0094811	0100000	0107304	0009637	0009376	0033219	0008982	0008565	0033463	0001731	00365	00365	00195	00224	00142	02829	18000345	(18000_SS)	36	6	-45
0094811	0100000	0107304	0009637	0009376	0033219	0008775	0008553	0031411	0001993	00163	00163	00160	00178	00136	01961	18000346	(18000_SS)	36	6	-44
0094811	0100000	0107304	0009637	0009376	0033219	0009207	0008910	0033692	0001263	00236	00236	00114	00132	00102	01770	18000347	(18000_SS)	36	6	-45
0094811	0100000	0107304	0009637	0009376	0033219	0008934	0008845	0031684	0001598	00180	00180	00132	00150	00122	01210	18000348	(18000_SS)	36	5	-44
0094811	0100000	0107304	0009637	0009376	0033219	0008913	0008859	0031600	0001803	00206	00206	00142	00163	00132	01188	18000349	(18000_SS)	36	5	-44

TUB registration: 20140801-XE98/XE98LONA.TXT /PS  
 application for measurement of display or printer output, no separation  
 TUB material: code=rh4ta

see similar files: <http://130.149.60.45/~farbmetrik/XE98/XE98LONA.TXT>  
technical information: <http://www.ps.bam.de> or <http://130.149.60.45/~farbmetrik>

%XS	YS	ZS	X0	Y0	Z0	X1	Y1	Z1	DV	dE*ab	dE*CH	dE*94	dE*CM	dE*00	dE*85	NR	Code	L*	a*	b*
%1000*CIEXYZ & 100*dE*																				
data for all colour (a) of experiment, iimp=446, colour difference pairs SS_0446=BIGC_S_SG %																				
0094811	0100000	0107304	0009637	0009376	0033219	0009364	0008829	0032882	0001872	00284	00284	00170	00198	00141	01725	18000350	(18000_SS)	36	7	-45 %
0094811	0100000	0107304	0009637	0009376	0033219	0009819	0009188	0034596	0001553	00388	00388	00183	00218	00126	01601	18000351	(18000_SS)	37	7	-45 %
0094811	0100000	0107304	0009637	0009376	0033219	0009813	0009659	0035059	0002033	00184	00184	00093	00109	00127	00831	18000352	(18000_SS)	37	5	-45 %
0094811	0100000	0107304	0009637	0009376	0033219	0009066	0008593	0034210	0002126	00458	00458	00216	00250	00146	03145	18000353	(18000_SS)	36	7	-46 %
0094811	0100000	0107304	0009637	0009376	0033219	0009429	0009418	0032440	0001973	00235	00235	00121	00146	00101	00808	18000354	(18000_SS)	37	5	-43 %
0094811	0100000	0107304	0009637	0009376	0033219	0009066	0008595	0034038	0001940	00437	00437	00211	00245	00143	03048	18000355	(18000_SS)	36	7	-46 %
0094811	0100000	0107304	0009637	0009376	0033219	0009517	0009542	0032816	0001868	00256	00256	00140	00167	00127	00942	18000356	(18000_SS)	37	5	-43 %
0094811	0100000	0107304	0009637	0009376	0033219	0008984	0008625	0030148	0001964	00246	00246	00168	00191	00180	01674	18000357	(18000_SS)	36	6	-43 %
0094811	0100000	0107304	0009637	0009376	0033219	0008969	0008480	0033909	0002105	00471	00471	00235	00271	00161	03372	18000358	(18000_SS)	36	7	-46 %
0094811	0100000	0107304	0009637	0009376	0033219	0008861	0008383	0030715	0001703	00270	00270	00223	00254	00212	02358	18000359	(18000_SS)	36	7	-44 %
0094811	0100000	0107304	0019812	0015820	0032601	0020157	0016502	0033412	0001414	00233	00233	00136	00143	00136	01129	18000360	(18000_SS)	47	25	-26 %
0094811	0100000	0107304	0019812	0015820	0032601	0019708	0015772	0034850	0002266	00314	00314	00169	00181	00184	01593	18000361	(18000_SS)	47	26	-27 %
0094811	0100000	0107304	0019812	0015820	0032601	0019987	0015978	0036463	0002608	00475	00475	00246	00263	00267	02351	18000362	(18000_SS)	47	26	-28 %
0094811	0100000	0107304	0019812	0015820	0032601	0019345	0015507	0029417	0002627	00387	00387	00195	00216	00207	01893	18000363	(18000_SS)	47	25	-24 %
0094811	0100000	0107304	0019812	0015820	0032601	0019427	0015467	0030983	0001712	00152	00152	00092	00096	00095	00805	18000364	(18000_SS)	47	26	-25 %
0094811	0100000	0107304	0019812	0015820	0032601	0019514	0015567	0035402	0003118	00433	00433	00226	00242	00246	02282	18000365	(18000_SS)	47	26	-28 %
0094811	0100000	0107304	0019812	0015820	0032601	0019840	0015916	0036357	0003203	00477	00477	00256	00272	00280	02368	18000366	(18000_SS)	47	26	-28 %
0094811	0100000	0107304	0019812	0015820	0032601	0020818	0016526	0032838	0001905	00183	00183	00137	00137	00139	01265	18000367	(18000_SS)	47	26	-25 %
0094811	0100000	0107304	0019812	0015820	0032601	0019710	0015718	0034703	0002590	00306	00306	00157	00169	00170	01579	18000368	(18000_SS)	47	26	-27 %
0094811	0100000	0107304	0019812	0015820	0032601	0019683	0015701	0033502	0001682	00150	00150	00078	00085	00084	00807	18000369	(18000_SS)	47	26	-27 %
0094811	0100000	0107304	0019812	0015820	0032601	0020425	0016398	0034551	0001552	00154	00154	00107	00108	00110	00939	18000370	(18000_SS)	47	26	-26 %
0094811	0100000	0107304	0019812	0015820	0032601	0019518	0015900	0033326	0002080	00209	00209	00129	00136	00136	00574	18000371	(18000_SS)	47	25	-26 %
0094811	0100000	0107304	0019812	0015820	0032601	0020451	0016233	0032423	0002229	00153	00153	00106	00108	00109	00909	18000372	(18000_SS)	47	26	-25 %
0094811	0100000	0107304	0019812	0015820	0032601	0019715	0015679	0031745	0001686	00093	00093	00058	00061	00062	00449	18000373	(18000_SS)	47	26	-25 %
0094811	0100000	0107304	0019812	0015820	0032601	0020197	0016586	0034336	0002631	00266	00266	00176	00182	00182	01191	18000374	(18000_SS)	47	25	-26 %
0094811	0100000	0107304	0019812	0015820	0032601	0019904	0015967	0031363	0001392	00209	00209	00102	00113	00109	01097	18000375	(18000_SS)	47	26	-25 %
0094811	0100000	0107304	0019812	0015820	0032601	0019989	0015941	0037373	0003545	00599	00599	00302	00323	00328	02974	18000376	(18000_SS)	47	26	-29 %
0094811	0100000	0107304	0019812	0015820	0032601	0019817	0015827	0037084	0003579	00588	00588	00301	00322	00329	02954	18000377	(18000_SS)	47	26	-29 %
0094811	0100000	0107304	0019812	0015820	0032601	0020647	0016010	0036474	0002623	00559	00559	00218	00248	00216	02393	18000378	(18000_SS)	47	27	-28 %
0094811	0100000	0107304	0019812	0015820	0032601	0019556	0015557	0034586	0002660	00330	00330	00168	00181	00180	01770	18000379	(18000_SS)	47	26	-27 %
0094811	0100000	0107304	0019812	0015820	0032601	0019992	0016504	0035168	0002921	00361	00361	00240	00251	00257	01383	18000380	(18000_SS)	47	24	-27 %
0094811	0100000	0107304	0019812	0015820	0032601	0019757	0015724	0036795	0003155	00576	00576	00288	00309	00313	02926	18000381	(18000_SS)	47	26	-29 %
0094811	0100000	0107304	0019812	0015820	0032601	0020901	0016171	0037933	0002720	00703	00703	00283	00317	00282	03093	18000382	(18000_SS)	47	27	-29 %
0094811	0100000	0107304	0019812	0015820	0032601	0020761	0016067	0037849	0002679	00710	00710	00286	00320	00287	03168	18000383	(18000_SS)	47	27	-29 %
0094811	0100000	0107304	0019812	0015820	0032601	0020345	0016644	0032390	0001749	00310	00310	00152	00167	00153	01772	18000384	(18000_SS)	47	25	-25 %
0094811	0100000	0107304	0019812	0015820	0032601	0019580	0015698	0030411	0001965	00284	00284	00139	00155	00148	01392	18000385	(18000_SS)	47	26	-24 %
0094811	0100000	0107304	0019812	0015820	0032601	0020306	0015962	0031740	0002233	00223	00223	00144	00148	00148	00884	18000386	(18000_SS)	47	27	-25 %
0094811	0100000	0107304	0019812	0015820	0032601	0019511	0015596	0033069	0001980	00265	00265	00137	00150	00145	01302	18000387	(18000_SS)	47	26	-24 %
0094811	0100000	0107304	0019812	0015820	0032601	0019490	0015662	0029700	0002147	00382	00382	00185	00208	00197	01867	18000388	(18000_SS)	47	25	-24 %
0094811	0100000	0107304	0019812	0015820	0032601	0019983	0015672	0031162	0002073	00238	00238	00153	00158	00158	00905	18000389	(18000_SS)	47	27	-25 %
0094811	0100000	0107304	0017105	0015931	0024181	0016800	0015878	0025150	0002943	00221	00221	00172	00214	00200	00920	18000390	(18000_SS)	47	10	-14 %
0094811	0100000	0107304	0017105	0015931	0024181	0016797	0015840	0025244	0002857	00229	00229	00175	00217	00200	01032	18000391	(18000_SS)	47	10	-14 %
0094811	0100000	0107304	0017105	0015931	0024181	0016871	0015920	0025223	0002907	00213	00213	00165	00204	00189	00913	18000392	(18000_SS)	47	10	-14 %
0094811	0100000	0107304	0017105	0015931	0024181	0016918	0015966	0025191	0002867	00201	00201	00156	00194	00180	00834	18000393	(18000_SS)	47	10	-14 %
0094811	0100000	0107304	0017105	0015931	0024181	0016885	0015928	0025157	0002778	00201	00201	00156	00194	00179	00850	18000394	(18000_SS)	47	10	-14 %
0094811	0100000	0107304	0017105	0015931	0024181	0017330	0015924	0024302	0001933	00129	00129	00085	00100	00101	00302	18000395	(18000_SS)	47	12	-13 %
0094811	0100000	0107304	0017105	0015931	0024181	0017072	0015656	0023982	0001911	00147	00147	00099	00114	00115	00532	18000396	(18000_SS)	47	12	-13 %
0094811	0100000	0107304	0017105	0015931	0024181	0017242	0015863	0024011	0001789	00115	00115	00083	00100	00099	00277	18000397	(18000_SS)	47	12	-13 %
0094811	0100000	0107304	0017105	0015931	0024181	0017159	0015769	0023878	0001797	00125	00125	00091	00108	00107	00360	18000398	(18000_SS)	47	12	-13 %
0094811	0100000	0107304	0017105	0015931	0024181	0017579	0016419	0024833	0001306	00065	00065	00064	00061	00063	00666	18000399	(18000_SS)	47	11	-13 %

TUB registration: 20140801-XE98/XE98LONA.TXT /PS  
application for measurement of display or printer output, no separation  
TUB material: code=rh4ta



%XS	YS	ZS	X0	Y0	Z0	X1	Y1	Z1	DV	dE*ab	dE*CH	dE*94	dE*CM	dE*00	dE*85	NR	Code	L*	a*	b*
%1000*CIEXYZ & 100*dE* data for all colour (a) of experiment, iimp=446, colour difference pairs SS_0446=BIGC_S_SG %																				
0094811	0100000	0107304	0017105	0015931	0024181	0017671	0016493	0025006	0001213	00074	00074	00073	00070	00072	00759	18000400	(18000_SS)	47	11	-13
0094811	0100000	0107304	0017105	0015931	0024181	0017778	0016625	0025053	0001191	00093	00093	00091	00086	00089	00949	18000401	(18000_SS)	47	11	-13
0094811	0100000	0107304	0017105	0015931	0024181	0017695	0016528	0024937	0001145	00078	00078	00077	00074	00076	00815	18000402	(18000_SS)	47	11	-13
0094811	0100000	0107304	0017105	0015931	0024181	0017814	0016653	0025044	0001238	00096	00096	00094	00089	00092	00990	18000403	(18000_SS)	47	11	-13
0094811	0100000	0107304	0017105	0015931	0024181	0017228	0016080	0024319	0000919	00027	00027	00022	00022	00023	00220	18000404	(18000_SS)	47	11	-13
0094811	0100000	0107304	0017105	0015931	0024181	0016514	0015114	0023084	0001686	00180	00180	00147	00157	00158	01208	18000405	(18000_SS)	46	12	-13
0094811	0100000	0107304	0017105	0015931	0024181	0016444	0015528	0023372	0002312	00154	00154	00106	00123	00125	00649	18000406	(18000_SS)	47	10	-13
0094811	0100000	0107304	0017105	0015931	0024181	0017724	0016011	0023391	0003498	00328	00328	00253	00302	00283	00997	18000407	(18000_SS)	47	12	-12
0094811	0100000	0107304	0017105	0015931	0024181	0017814	0016107	0023629	0003401	00316	00316	00242	00288	00272	00949	18000408	(18000_SS)	47	12	-12
0094811	0100000	0107304	0017105	0015931	0024181	0017941	0016233	0023637	0003426	00327	00327	00255	00303	00283	01104	18000409	(18000_SS)	47	12	-12
0094811	0100000	0107304	0017105	0015931	0024181	0017916	0016199	0023659	0003376	00326	00326	00252	00300	00282	01050	18000410	(18000_SS)	47	12	-12
0094811	0100000	0107304	0017105	0015931	0024181	0017935	0016222	0023578	0003340	00333	00333	00260	00309	00288	01129	18000411	(18000_SS)	47	12	-12
0094811	0100000	0107304	0017105	0015931	0024181	0017905	0016187	0023562	0003304	00333	00333	00259	00308	00288	01097	18000412	(18000_SS)	47	12	-12
0094811	0100000	0107304	0017105	0015931	0024181	0017160	0015742	0022635	0002885	00262	00262	00205	00250	00217	01150	18000413	(18000_SS)	47	12	-12
0094811	0100000	0107304	0017105	0015931	0024181	0017019	0015599	0022579	0002803	00248	00248	00197	00238	00210	01101	18000414	(18000_SS)	47	12	-12
0094811	0100000	0107304	0017105	0015931	0024181	0017183	0015757	0022754	0002785	00249	00249	00196	00239	00209	01068	18000415	(18000_SS)	47	12	-12
0094811	0100000	0107304	0017105	0015931	0024181	0017099	0015671	0022675	0002889	00248	00248	00196	00238	00210	01069	18000416	(18000_SS)	47	12	-12
0094811	0100000	0107304	0017105	0015931	0024181	0017335	0015784	0023262	0002660	00244	00244	00190	00229	00214	00780	18000417	(18000_SS)	47	12	-12
0094811	0100000	0107304	0017105	0015931	0024181	0017353	0015799	0023238	0002703	00248	00248	00194	00234	00218	00805	18000418	(18000_SS)	47	12	-12
0094811	0100000	0107304	0017105	0015931	0024181	0017370	0015814	0023320	0002692	00243	00243	00189	00228	00214	00763	18000419	(18000_SS)	47	12	-12
0094811	0100000	0107304	0017105	0015931	0024181	0017349	0016195	0023884	0001221	00115	00115	00078	00091	00078	00680	18000420	(18000_SS)	47	11	-12
0094811	0100000	0107304	0017105	0015931	0024181	0016430	0015886	0021998	0005140	00507	00507	00284	00353	00342	01968	18000421	(18000_SS)	47	9	-11
0094811	0100000	0107304	0010195	0010022	0026030	0009976	0010055	0024035	0001904	00390	00390	00177	00218	00099	01871	18000422	(18000_SS)	38	4	-30
0094811	0100000	0107304	0010195	0010022	0026030	0010504	0009720	0026547	0003817	00507	00507	00309	00376	00285	01704	18000423	(18000_SS)	38	7	-32
0094811	0100000	0107304	0010195	0010022	0026030	0010388	0009979	0026635	0002427	00212	00212	00121	00149	00095	00749	18000424	(18000_SS)	38	6	-32
0094811	0100000	0107304	0010195	0010022	0026030	0010670	0009981	0027446	0003086	00459	00459	00258	00314	00202	01576	18000425	(18000_SS)	38	7	-32
0094811	0100000	0107304	0010195	0010022	0026030	0010350	0009970	0027740	0002520	00325	00325	00144	00168	00076	01574	18000426	(18000_SS)	38	6	-33
0094811	0100000	0107304	0010195	0010022	0026030	0009874	0010259	0023743	0003691	00625	00625	00329	00412	00217	02762	18000427	(18000_SS)	38	3	-29
0094811	0100000	0107304	0010195	0010022	0026030	0010105	0010073	0026148	0002506	00109	00109	00073	00091	00086	00283	18000428	(18000_SS)	38	4	-31
0094811	0100000	0107304	0010195	0010022	0026030	0009837	0015081	0027270	0003781	00371	00371	00239	00290	00328	01202	18000429	(18000_SS)	38	3	-32
0094811	0100000	0107304	0010195	0010022	0026030	0010180	0009990	0026034	0001542	00017	00017	00010	00012	00007	00102	18000430	(18000_SS)	38	5	-31
0094811	0100000	0107304	0010195	0010022	0026030	0010171	0010004	0026549	0001807	00088	00088	00037	00044	00048	00476	18000431	(18000_SS)	38	5	-32
0094811	0100000	0107304	0010195	0010022	0026030	0009931	0010009	0026285	0002789	00201	00201	00135	00167	00172	00532	18000432	(18000_SS)	38	4	-32
0094811	0100000	0107304	0010195	0010022	0026030	0010720	0009872	0023792	0004902	00609	00609	00400	00504	00564	02068	18000433	(18000_SS)	38	8	-30
0094811	0100000	0107304	0010195	0010022	0026030	0009696	0010137	0027364	0004171	00513	00513	00339	00410	00444	01467	18000434	(18000_SS)	38	3	-32
0094811	0100000	0107304	0010195	0010022	0026030	0010645	0010101	0025622	0004089	00297	00297	00200	00253	00262	00863	18000435	(18000_SS)	38	6	-31
0094811	0100000	0107304	0010195	0010022	0026030	0010761	0010005	0025642	0004221	00448	00448	00301	00376	00368	01099	18000436	(18000_SS)	38	7	-31
0094811	0100000	0107304	0010195	0010022	0026030	0010399	0009864	0025820	0003509	00281	00281	00186	00234	00210	00768	18000437	(18000_SS)	38	6	-31
0094811	0100000	0107304	0010195	0010022	0026030	0010829	0009743	0024705	0004640	00713	00713	00480	00591	00595	01846	18000438	(18000_SS)	38	9	-31
0094811	0100000	0107304	0010195	0010022	0026030	0010158	0010121	0025634	0002728	00141	00141	00076	00093	00051	00638	18000439	(18000_SS)	38	4	-31
0094811	0100000	0107304	0010195	0010022	0026030	0010119	0010159	0024958	0002162	00272	00272	00133	00162	00074	01310	18000440	(18000_SS)	38	4	-30
0094811	0100000	0107304	0010195	0010022	0026030	0010202	0010181	0024192	0002011	00369	00369	00156	00189	00122	01986	18000441	(18000_SS)	38	4	-30
0094811	0100000	0107304	0010195	0010022	0026030	0009971	0010349	0027890	0004168	00469	00469	00309	00372	00410	01468	18000442	(18000_SS)	38	3	-32
0094811	0100000	0107304	0010195	0010022	0026030	0009943	0010161	0024297	0003111	00446	00446	00230	00286	00144	01967	18000443	(18000_SS)	38	3	-30
0094811	0100000	0107304	0010195	0010022	0026030	0010298	0010150	0026921	0002291	00105	00105	00051	00059	00067	00530	18000444	(18000_SS)	38	5	-32
0094811	0100000	0107304	0010195	0010022	0026030	0010348	0010085	0025855	0001972	00085	00085	00054	00068	00077	00352	18000445	(18000_SS)	38	5	-31

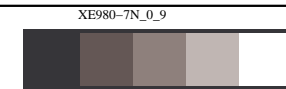
see similar files: http://130.149.60.45/~farbmetrik/XE98/XE98.HTM  
technical information: http://www.ps.bam.de or http://130.149.60.45/~farbmetrik

TUB registration: 20140801-XE98/XE98LONA.TXT /PS  
application for measurement of display or printer output, no separation  
TUB material: code=rh4ta

%XS	YS	ZS	X0	Y0	Z0	X1	Y1	Z1	DV	dE*ab	dE*CH	dE*94	dE*CM	dE*00	dE*85	NR	Code	L*	a*	b*
%1000*CIEXYZ & 100*dE* data for all colour (a) of experiment, iimp=446, colour difference pairs SS_0446=BIGC_S_SG %																				
Minimum, maximum and average colour difference value																				
STRESS constant F and STRESS value S																				
ia+i = 446, d_CIELABmina = 0.17, d_CIELABmaxa = 7.97, d_CIELABavea = 3.03																				
ia+i = 446, CIELAB_Fa = 1.29, CIELAB_STRESSa = 42.17																				
ia+i = 446, d_CIELCHmina = 0.17, d_CIELCHmaxa = 7.97, d_CIELCHavea = 3.03																				
ia+i = 446, CIELCHFa = 1.29, CIELCHSTRESSa = 42.17																				
ia+i = 446, d_C94LCHmina = 0.1, d_C94LCHmaxa = 5.47, d_C94LCHavea = 1.63																				
ia+i = 446, C94LCHFa = 0.73, C94LCHSTRESSa = 28.73																				
ia+i = 446, d_CMCLCHmina = 0.12, d_CMCLCHmaxa = 6.74, d_CMCLCHavea = 1.92																				
ia+i = 446, CMCLCHFa = 0.86, CMCLCHSTRESSa = 31.38																				
ia+i = 446, d_C00LCHmina = 0.07, d_C00LCHmaxa = 6.51, d_C00LCHavea = 1.67																				
ia+i = 446, C00LCHFa = 0.76, C00LCHSTRESSa = 29.37																				
ia+i = 446, d_C85LCHmina = 0.87, d_C85LCHmaxa = 33.72, d_C85LCHavea = 9.84																				
ia+i = 446, C85LCHFa = 4.26, C85LCHSTRESSa = 45.85																				

see similar files: <http://130.149.60.45/~farbmetrik/XE98/XE98.HTM>  
technical information: <http://www.ps.bam.de> or <http://130.149.60.45/~farbmetrik>

TUB registration: 20140801-XE98/XE98L0NA.TXT /.PS  
application for measurement of display or printer output, no separation  
TUB material: code=rh4ta



see similar files: <http://130.149.60.45/~farbmetrik/XE98/XE98LONA.TXT>  
technical information: <http://www.ps.bam.de> or <http://130.149.60.45/~farbmetrik>

%L*0	a*0	b*0	C*ab0	hab0	L*1	a*1	b*1	C*ab1	hab1	DV	dE*ab	dE*94	dE*CM	dE*00	dE*85	NR	Code	L*	a*	b*	
%CIELAB data for all colour (a) of experiment, limp=446, colour difference pairs SS_0446=BIGC_S_SG %																					
46.62	37.74	22.97	44.19	31.32	46.54	36.71	21.36	42.47	30.2	1.26	1.91	0.77	0.98	0.8	4.36	18000000	(18000_SS)	47	37	22 %	
46.62	37.74	22.97	44.19	31.32	46.28	36.42	23.17	43.17	32.4	1.55	1.38	0.71	0.88	0.75	4.32	18000001	(18000_SS)	46	37	23 %	
46.62	37.74	22.97	44.19	31.32	46.23	38.74	20.86	44.0	28.3	2.41	2.36	1.45	1.84	1.55	6.76	18000002	(18000_SS)	46	38	21 %	
46.62	37.74	22.97	44.19	31.32	46.13	38.52	24.74	45.79	32.7	1.73	2.0	0.98	1.18	1.0	7.18	18000003	(18000_SS)	46	38	23 %	
46.62	37.74	22.97	44.19	31.32	46.49	38.76	23.19	45.17	30.8	1.88	1.04	0.41	0.5	0.41	2.67	18000004	(18000_SS)	47	38	23 %	
46.62	37.74	22.97	44.19	31.32	46.47	37.9	23.5	44.59	31.8	1.71	0.57	0.3	0.36	0.31	2.18	18000005	(18000_SS)	47	37	23 %	
46.62	37.74	22.97	44.19	31.32	46.49	38.99	21.85	44.7	29.2	2.17	1.68	0.98	1.27	1.06	3.91	18000006	(18000_SS)	47	38	22 %	
46.62	37.74	22.97	44.19	31.32	46.37	36.86	24.58	44.31	33.7	2.36	1.85	1.13	1.49	1.23	4.95	18000007	(18000_SS)	47	37	23 %	
46.62	37.74	22.97	44.19	31.32	46.31	37.57	22.69	43.89	31.1	1.73	0.45	0.34	0.34	0.33	3.32	18000008	(18000_SS)	46	37	22 %	
46.62	37.74	22.97	44.19	31.32	46.21	38.49	18.26	42.6	25.3	3.35	4.78	2.78	3.55	2.99	12.49	18000009	(18000_SS)	46	38	20 %	
46.62	37.74	22.97	44.19	31.32	45.88	39.03	24.96	46.34	32.6	1.76	2.48	1.19	1.38	1.2	9.95	18000010	(18000_SS)	46	38	23 %	
46.62	37.74	22.97	44.19	31.32	46.71	35.64	22.75	42.29	32.5	1.48	2.11	0.85	1.09	0.89	4.41	18000011	(18000_SS)	47	36	22 %	
46.62	37.74	22.97	44.19	31.32	46.36	37.53	25.64	45.45	34.3	2.28	2.69	1.5	1.98	1.63	6.86	18000012	(18000_SS)	46	37	24 %	
46.62	37.74	22.97	44.19	31.32	46.37	39.13	22.57	45.18	29.9	2.58	1.46	0.75	0.94	0.79	4.09	18000013	(18000_SS)	47	38	22 %	
46.62	37.74	22.97	44.19	31.32	46.8	35.85	21.13	41.62	30.5	1.8	2.64	0.94	1.18	0.97	6.34	18000014	(18000_SS)	47	36	22 %	
46.62	37.74	22.97	44.19	31.32	46.82	37.37	21.13	42.94	29.4	1.94	1.88	0.95	1.23	1.02	5.15	18000015	(18000_SS)	47	37	22 %	
46.62	37.74	22.97	44.19	31.32	47.73	36.15	17.85	40.32	26.2	3.04	5.47	2.8	3.5	2.98	18.65	18000016	(18000_SS)	47	36	20 %	
46.62	37.74	22.97	44.19	31.32	46.63	35.62	27.22	44.83	37.3	2.91	4.75	2.84	3.87	3.13	10.3	18000017	(18000_SS)	47	36	25 %	
46.62	37.74	22.97	44.19	31.32	46.21	38.1	22.37	44.19	30.4	1.94	0.8	0.58	0.67	0.6	4.63	18000018	(18000_SS)	46	37	22 %	
46.62	37.74	22.97	44.19	31.32	46.64	37.35	22.84	43.78	31.4	1.33	0.41	0.14	0.18	0.14	0.87	18000019	(18000_SS)	47	37	22 %	
46.62	37.74	22.97	44.19	31.32	46.42	39.19	18.91	43.52	25.7	3.46	4.31	2.57	3.29	2.77	10.68	18000020	(18000_SS)	47	38	20 %	
46.62	37.74	22.97	44.19	31.32	46.47	36.01	25.81	44.31	35.6	3.21	3.33	2.0	2.71	2.2	7.49	18000021	(18000_SS)	47	36	24 %	
46.62	37.74	22.97	44.19	31.32	46.78	36.36	27.99	45.88	37.5	3.49	5.2	3.01	4.08	3.3	11.33	18000022	(18000_SS)	47	37	25 %	
66.49	-10.57	13.94	17.5	127.15	66.25	-10.0	10.6	14.58	133.3	2.33	3.39	2.14	2.5	2.1	10.01	18000023	(18000_SS)	66	-10	12 %	
66.49	-10.57	13.94	17.5	127.15	66.0	-10.06	17.59	20.26	119.7	2.51	3.7	2.51	2.71	2.41	11.07	18000024	(18000_SS)	66	-10	15 %	
66.49	-10.57	13.94	17.5	127.15	66.81	-9.77	12.36	15.76	128.3	2.04	1.79	1.05	1.21	1.08	5.63	18000025	(18000_SS)	67	-10	13 %	
66.49	-10.57	13.94	17.5	127.15	66.55	-9.22	11.46	14.71	128.7	2.11	2.82	1.6	1.92	1.71	7.63	18000026	(18000_SS)	67	-9	12 %	
66.49	-10.57	13.94	17.5	127.15	65.93	-11.93	17.55	21.22	124.2	2.48	3.89	2.29	2.47	2.16	11.47	18000027	(18000_SS)	66	-11	15 %	
66.49	-10.57	13.94	17.5	127.15	66.37	-11.66	14.63	18.71	128.5	1.66	1.29	0.77	0.86	0.88	2.89	18000028	(18000_SS)	66	-11	14 %	
66.49	-10.57	13.94	17.5	127.15	66.11	-10.36	16.21	19.25	122.5	1.67	2.31	1.56	1.69	1.49	7.28	18000029	(18000_SS)	66	-10	15 %	
66.49	-10.57	13.94	17.5	127.15	66.23	-9.27	11.26	14.59	129.4	1.97	2.99	1.72	2.05	1.8	8.33	18000030	(18000_SS)	66	-9	12 %	
66.49	-10.57	13.94	17.5	127.15	65.89	-8.26	13.49	15.82	121.4	2.36	2.42	1.71	1.91	2.05	6.5	18000031	(18000_SS)	66	-9	13 %	
66.49	-10.57	13.94	17.5	127.15	65.98	-10.87	15.93	19.29	124.3	1.51	2.07	1.33	1.43	1.24	7.3	18000032	(18000_SS)	66	-10	14 %	
66.49	-10.57	13.94	17.5	127.15	66.29	-8.36	13.8	16.14	121.2	2.1	2.21	1.58	1.8	1.94	4.05	18000033	(18000_SS)	66	-9	13 %	
66.49	-10.57	13.94	17.5	127.15	66.22	-11.03	14.47	18.2	127.3	1.12	0.75	0.47	0.49	0.48	2.98	18000034	(18000_SS)	66	-10	14 %	
66.49	-10.57	13.94	17.5	127.15	65.91	-9.05	14.36	16.97	122.2	1.95	1.67	1.34	1.43	1.5	5.78	18000035	(18000_SS)	66	-9	14 %	
66.49	-10.57	13.94	17.5	127.15	66.17	-11.01	15.38	18.92	125.5	1.05	1.54	0.94	1.03	0.89	5.09	18000036	(18000_SS)	66	-10	14 %	
66.49	-10.57	13.94	17.5	127.15	65.32	-9.63	14.51	17.41	123.5	1.23	1.6	1.45	1.34	1.36	10.54	18000037	(18000_SS)	66	-10	14 %	
66.49	-10.57	13.94	17.5	127.15	66.17	-10.35	16.32	19.33	122.3	1.25	2.4	1.62	1.76	1.55	7.29	18000038	(18000_SS)	66	-10	15 %	
66.49	-10.57	13.94	17.5	127.15	66.14	-11.3	12.5	16.86	132.1	1.86	1.65	1.27	1.39	1.27	5.19	18000039	(18000_SS)	66	-10	13 %	
66.49	-10.57	13.94	17.5	127.15	65.91	-12.03	15.74	19.81	127.3	1.7	2.38	1.41	1.52	1.43	7.72	18000040	(18000_SS)	66	-11	14 %	
66.49	-10.57	13.94	17.5	127.15	65.82	-10.16	13.09	16.57	127.8	1.03	1.16	0.86	0.82	0.77	6.22	18000041	(18000_SS)	66	-10	13 %	
66.49	-10.57	13.94	17.5	127.15	66.68	-10.77	12.96	16.85	129.7	1.32	1.02	0.73	0.81	0.71	3.38	18000042	(18000_SS)	67	-10	13 %	
66.49	-10.57	13.94	17.5	127.15	66.83	-9.93	12.37	15.87	128.7	1.33	1.73	1.04	1.18	1.03	5.68	18000043	(18000_SS)	67	-10	13 %	
66.49	-10.57	13.94	17.5	127.15	66.72	-9.79	13.35	16.56	126.2	1.2	1.0	0.61	0.68	0.69	3.02	18000044	(18000_SS)	67	-10	13 %	
66.49	-10.57	13.94	17.5	127.15	66.61	-9.89	12.64	16.05	128.0	1.03	1.47	0.84	0.98	0.87	4.12	18000045	(18000_SS)	67	-10	13 %	
66.49	-10.57	13.94	17.5	127.15	66.35	-9.18	13.91	16.67	123.4	1.38	1.39	1.0	1.12	1.2	2.58	18000046	(18000_SS)	66	-9	13 %	
66.49	-10.57	13.94	17.5	127.15	66.06	-10.13	12.99	16.47	127.9	1.37	1.13	0.74	0.78	0.7	4.58	18000047	(18000_SS)	66	-10	13 %	
66.49	-10.57	13.94	17.5	127.15	65.9	-12.34	14.73	19.21	129.9	2.12	2.02	1.32	1.4	1.45	6.47	18000048	(18000_SS)	66	-11	14 %	
66.49	-10.57	13.94	17.5	127.15	66.11	-8.34	11.69	14.37	125.5	2.36	3.18	1.82	2.17	2.13	8.08	18000049	(18000_SS)	66	-9	12 %	

TUB registration: 20140801-XE98/XE98LONA.TXT /PS  
application for measurement of display or printer output, no separation  
TUB material: code=rh4ta

<http://130.149.60.45/~farbmetrik/XE98/XE98LONA.TXT> /PS; transfer output  
 N: no 3D-linearization (OL) in file (F) or PS-startup (S), page 12/20

see similar files: <http://130.149.60.45/~farbmetrik/XE98/XE98LONA.TXT> /PS  
 technical information: <http://www.ps.bam.de> or <http://130.149.60.45/~farbmetrik>

TUB registration: 20140801-XE98/XE98LONA.TXT /PS  
 application for measurement of display or printer output, no separation  
 TUB material: code=rh4ta

%L*0	a*0	b*0	C*ab0	hab0	L*1	a*1	b*1	C*ab1	hab1	DV	dE*ab	dE*94	dE*CM	dE*00	dE*85	NR	Code	L*	a*	b*	
%CIELAB data for all colour (a) of experiment, limp=446, colour difference pairs SS_0446=BIGC_S_SG %																					
66.49	-10.57	13.94	17.5	127.15	66.01	-7.59	12.97	15.03	120.3	2.91	3.17	2.11	2.44	2.62	6.97	18000050	(18000_SS)	66	-9	13	
66.49	-10.57	13.94	17.5	127.15	66.24	-10.23	17.2	20.01	120.7	2.72	3.28	2.18	2.38	2.09	9.31	18000051	(18000_SS)	66	-10	15	
66.49	-10.57	13.94	17.5	127.15	66.46	-8.32	12.62	15.11	123.3	2.28	2.61	1.57	1.86	1.95	5.37	18000052	(18000_SS)	66	-9	13	
44.84	58.21	36.91	68.92	32.37	44.42	60.78	37.39	71.36	31.6	1.72	2.64	0.86	1.1	0.87	7.0	18000053	(18000_SS)	45	59	37	
44.84	58.21	36.91	68.92	32.37	44.72	57.57	34.35	67.04	30.8	1.42	2.63	1.02	1.37	1.12	4.17	18000054	(18000_SS)	45	57	35	
44.84	58.21	36.91	68.92	32.37	45.06	59.07	34.62	68.47	30.3	1.46	2.45	1.2	1.58	1.34	4.56	18000055	(18000_SS)	45	58	35	
44.84	58.21	36.91	68.92	32.37	45.8	54.74	35.38	65.18	32.8	1.75	3.9	1.35	1.63	1.34	13.28	18000056	(18000_SS)	45	56	36	
44.84	58.21	36.91	68.92	32.37	44.74	57.86	39.09	69.83	34.0	1.44	2.21	1.02	1.37	1.14	3.43	18000057	(18000_SS)	45	58	38	
44.84	58.21	36.91	68.92	32.37	44.39	59.94	37.19	70.54	31.8	1.3	1.81	0.68	0.82	0.68	6.16	18000058	(18000_SS)	45	59	37	
44.84	58.21	36.91	68.92	32.37	45.5	56.35	41.23	69.82	36.1	2.61	4.75	2.37	3.19	2.66	9.96	18000059	(18000_SS)	45	57	39	
44.84	58.21	36.91	68.92	32.37	44.98	58.83	38.8	70.47	33.4	1.27	1.99	0.73	0.99	0.79	3.15	18000060	(18000_SS)	45	58	37	
44.84	58.21	36.91	68.92	32.37	45.37	56.29	37.71	67.76	33.8	1.62	2.14	1.03	1.32	1.12	7.18	18000061	(18000_SS)	45	57	37	
44.84	58.21	36.91	68.92	32.37	44.88	55.57	32.94	64.61	30.6	2.04	4.75	1.44	1.98	1.55	8.02	18000062	(18000_SS)	45	56	34	
44.84	58.21	36.91	68.92	32.37	44.17	57.32	41.42	70.72	35.8	2.17	4.64	2.22	2.97	2.47	9.79	18000063	(18000_SS)	45	57	39	
44.84	58.21	36.91	68.92	32.37	45.31	57.65	38.16	69.14	33.5	1.6	1.45	0.81	1.01	0.87	5.49	18000064	(18000_SS)	45	57	37	
44.84	58.21	36.91	68.92	32.37	44.46	61.21	39.51	72.86	32.8	1.62	3.99	1.06	1.42	1.05	8.3	18000065	(18000_SS)	45	59	38	
44.84	58.21	36.91	68.92	32.37	44.61	60.28	39.34	71.98	33.1	1.49	3.2	0.9	1.21	0.91	6.01	18000066	(18000_SS)	45	59	38	
44.84	58.21	36.91	68.92	32.37	45.41	57.71	41.63	71.16	35.8	2.45	4.78	2.2	2.96	2.45	8.79	18000067	(18000_SS)	45	57	39	
44.84	58.21	36.91	68.92	32.37	44.4	59.94	40.77	72.49	34.2	1.48	4.25	1.48	1.97	1.57	8.33	18000068	(18000_SS)	45	59	38	
44.84	58.21	36.91	68.92	32.37	45.24	55.09	32.31	63.87	30.3	1.57	5.56	1.71	2.34	1.84	10.89	18000069	(18000_SS)	45	56	34	
44.84	58.21	36.91	68.92	32.37	44.81	55.75	32.59	64.57	30.3	1.63	4.96	1.58	2.18	1.72	8.2	18000070	(18000_SS)	45	56	34	
44.84	58.21	36.91	68.92	32.37	45.27	55.0	31.83	63.55	30.0	1.41	6.01	1.9	2.59	2.05	11.77	18000071	(18000_SS)	45	56	34	
44.84	58.21	36.91	68.92	32.37	45.19	57.38	39.56	69.7	34.5	1.89	2.8	1.37	1.83	1.53	5.5	18000072	(18000_SS)	45	57	38	
44.84	58.21	36.91	68.92	32.37	44.57	59.36	40.95	72.12	34.5	1.58	4.21	1.57	2.12	1.71	7.0	18000073	(18000_SS)	45	58	38	
44.84	58.21	36.91	68.92	32.37	44.74	59.24	33.81	68.21	29.7	2.25	3.26	1.57	2.08	1.76	5.27	18000074	(18000_SS)	45	58	35	
44.84	58.21	36.91	68.92	32.37	44.36	56.96	40.13	69.68	35.1	1.77	3.48	1.73	2.31	1.93	7.22	18000075	(18000_SS)	45	57	38	
44.84	58.21	36.91	68.92	32.37	45.25	57.09	31.27	65.1	28.7	2.57	5.75	2.33	3.11	2.58	10.93	18000076	(18000_SS)	45	57	34	
44.84	58.21	36.91	68.92	32.37	45.18	58.98	42.14	72.49	35.5	2.09	5.3	2.13	2.88	2.34	7.79	18000077	(18000_SS)	45	58	39	
44.84	58.21	36.91	68.92	32.37	45.13	59.12	32.8	67.61	29.0	2.22	4.21	2.01	2.64	2.23	7.6	18000078	(18000_SS)	45	58	34	
44.84	58.21	36.91	68.92	32.37	44.53	59.19	35.67	69.11	31.0	1.5	1.6	0.82	1.06	0.9	4.24	18000079	(18000_SS)	45	58	36	
44.84	58.21	36.91	68.92	32.37	45.04	57.93	33.05	66.7	29.7	1.49	3.87	1.66	2.21	1.84	6.76	18000080	(18000_SS)	45	58	34	
44.84	58.21	36.91	68.92	32.37	44.87	58.86	35.52	68.75	31.1	1.31	1.53	0.75	0.99	0.84	2.44	18000081	(18000_SS)	45	58	36	
44.84	58.21	36.91	68.92	32.37	45.27	56.04	32.97	65.02	30.4	1.26	4.51	1.51	2.03	1.62	9.34	18000082	(18000_SS)	45	57	34	
63.22	-0.29	0.34	0.45	130.76	63.11	0.13	-0.78	0.8	279.5	2.27	1.21	1.2	1.79	1.29	4.73	18000083	(18000_SS)	63	0	0	
63.22	-0.29	0.34	0.45	130.76	63.45	-2.2	-4.21	4.75	242.3	5.08	4.94	4.86	6.24	4.84	18.94	18000084	(18000_SS)	63	-1	-1	
63.22	-0.29	0.34	0.45	130.76	62.84	-0.36	-0.72	0.8	243.3	2.14	1.13	1.12	1.61	1.1	5.48	18000085	(18000_SS)	63	0	0	
63.22	-0.29	0.34	0.45	130.76	63.77	-0.17	2.22	2.23	94.5	2.82	1.96	1.92	2.65	1.85	8.79	18000086	(18000_SS)	63	0	1	
63.22	-0.29	0.34	0.45	130.76	63.14	-0.27	-2.05	2.07	262.3	3.94	2.4	2.37	3.36	2.32	9.74	18000087	(18000_SS)	63	0	0	
63.22	-0.29	0.34	0.45	130.76	63.56	-1.36	-3.23	3.5	247.1	4.71	3.74	3.69	4.94	3.65	14.89	18000088	(18000_SS)	63	0	-1	
63.22	-0.29	0.34	0.45	130.76	63.36	0.05	-2.13	2.13	271.5	3.63	2.51	2.48	3.5	2.45	10.11	18000089	(18000_SS)	63	0	0	
63.22	-0.29	0.34	0.45	130.76	63.16	-0.49	1.26	1.36	111.3	2.06	0.94	0.92	1.35	0.93	3.7	18000090	(18000_SS)	63	0	0	
63.22	-0.29	0.34	0.45	130.76	63.12	1.14	-0.02	1.14	358.7	3.82	1.49	1.47	2.17	2.13	3.33	18000091	(18000_SS)	63	0	0	
63.22	-0.29	0.34	0.45	130.76	63.11	0.57	0.94	1.11	58.6	3.41	1.06	1.05	1.55	1.42	3.1	18000092	(18000_SS)	63	0	0	
63.22	-0.29	0.34	0.45	130.76	62.83	0.15	0.38	0.41	68.9	2.27	0.59	0.59	0.74	0.74	3.57	18000093	(18000_SS)	63	0	0	
63.22	-0.29	0.34	0.45	130.76	62.37	2.67	2.8	3.87	46.3	5.02	3.94	3.88	5.09	4.71	13.6	18000094	(18000_SS)	63	1	1	
63.22	-0.29	0.34	0.45	130.76	62.77	-0.23	0.16	0.29	144.9	1.56	0.48	0.48	0.46	0.42	4.06	18000095	(18000_SS)	63	0	0	
63.22	-0.29	0.34	0.45	130.76	62.83	0.33	0.72	0.8	64.9	2.44	0.83	0.82	1.14	1.06	3.95	18000096	(18000_SS)	63	0	0	
63.22	-0.29	0.34	0.45	130.76	63.0	-0.71	0.22	0.74	162.6	1.84	0.48	0.47	0.66	0.63	2.17	18000097	(18000_SS)	63	0	0	
63.22	-0.29	0.34	0.45	130.76	63.11	-0.41	1.16	1.23	109.5	1.36	0.83	0.81	1.19	0.81	3.38	18000098	(18000_SS)	63	0	0	
63.22	-0.29	0.34	0.45	130.76	62.71	-0.46	-0.09	0.47	191.1	1.34	0.68	0.68	0.81	0.65	4.86	18000099	(18000_SS)	63	0	0	

1=0001130-L0

XE980-7N\_1\_1

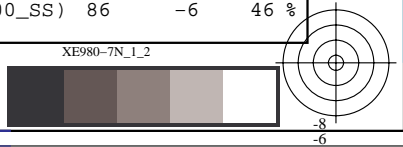
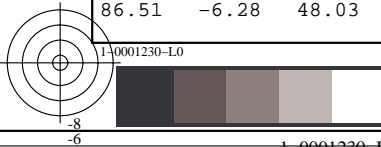
TUB-test chart XE98; Colour differences and formulae input: w/rgb/cmyk -> (w/rgb/cmyk)  
 SS\_0446=BIGC\_S\_SG colour difference experiments, all colours of 446

1=0001130-F0

%L*0	a*0	b*0	C*ab0	hab0	L*1	a*1	b*1	C*ab1	hab1	DV	dE*ab	dE*94	dE*CM	dE*00	dE*85	NR	Code	L*	a*	b*
see similar files: <a href="http://130.149.60.45/~farbmetrik/XE98/XE98LONA.TXT">http://130.149.60.45/~farbmetrik/XE98/XE98LONA.TXT</a> /PS																				
technical information: <a href="http://www.ps.bam.de">http://www.ps.bam.de</a> or <a href="http://130.149.60.45/~farbmetrik">http://130.149.60.45/~farbmetrik</a>																				
TUB registration: 20140801-XE98/XE98LONA.TXT /PS																				
application for measurement of display or printer output, no separation																				
TUB material: code=rh4ta																				
TUB-test chart XE98; Colour differences and formulae input: w/rgb/cmyk -> (w/rgb/cmyk)																				
SS_0446=BIGC_S_SG colour difference experiments, all colours of 446																				

see similar files: <http://130.149.60.45/~farbmetrik/XE98/XE98LONA.TXT> /PS  
technical information: <http://www.ps.bam.de> or <http://130.149.60.45/~farbmetrik>

TUB registration: 20140801-XE98/XE98LONA.TXT /PS  
application for measurement of display or printer output, no separation  
TUB material: code=rh4ta



%L*0	a*0	b*0	C*ab0	hab0	L*1	a*1	b*1	C*ab1	hab1	DV	dE*ab	dE*94	dE*CM	dE*00	dE*85	NR	Code	L*	a*	b*
%CIE LAB data for all colour (a) of experiment, iimp=446, colour difference pairs SS_0446=BIGC_S_SG %																				
86.51	-6.28	48.03	48.44	97.45	86.63	-6.89	47.56	48.06	98.2	1.9	0.77	0.42	0.45	0.46	1.43	18000150 (18000_SS)	87	-6	47	
86.51	-6.28	48.03	48.44	97.45	86.87	-7.82	46.54	47.2	99.5	2.83	2.16	1.13	1.22	1.24	4.1	18000151 (18000_SS)	87	-7	47	
86.51	-6.28	48.03	48.44	97.45	87.32	-7.69	45.17	45.82	99.6	2.66	3.28	1.56	1.65	1.57	7.65	18000152 (18000_SS)	87	-6	46	
86.51	-6.28	48.03	48.44	97.45	86.72	-7.61	49.47	50.06	98.7	2.15	1.97	0.85	0.95	0.9	3.06	18000153 (18000_SS)	87	-6	48	
86.51	-6.28	48.03	48.44	97.45	87.0	-8.52	49.98	50.7	99.6	2.74	3.01	1.41	1.52	1.48	5.32	18000154 (18000_SS)	87	-7	49	
86.51	-6.28	48.03	48.44	97.45	87.29	-8.7	51.94	52.66	99.5	2.8	4.66	1.86	2.05	1.82	8.05	18000155 (18000_SS)	87	-7	49	
86.51	-6.28	48.03	48.44	97.45	86.64	-8.71	54.13	54.83	99.1	2.99	6.57	2.19	2.62	2.16	8.51	18000156 (18000_SS)	87	-7	51	
86.51	-6.28	48.03	48.44	97.45	86.88	-8.23	55.02	55.63	98.5	3.02	7.27	2.36	2.82	2.25	9.44	18000157 (18000_SS)	87	-7	51	
86.51	-6.28	48.03	48.44	97.45	86.28	-5.87	49.76	50.11	96.7	1.37	1.79	0.67	0.78	0.68	3.03	18000158 (18000_SS)	86	-6	48	
86.51	-6.28	48.03	48.44	97.45	85.86	-5.5	50.97	51.27	96.1	1.67	3.11	1.27	1.38	1.22	6.45	18000159 (18000_SS)	86	-5	49	
86.51	-6.28	48.03	48.44	97.45	85.79	-5.27	51.45	51.72	95.8	2.02	3.63	1.49	1.62	1.44	7.31	18000160 (18000_SS)	86	-5	49	
86.51	-6.28	48.03	48.44	97.45	85.68	-5.0	53.56	53.79	95.3	2.19	5.73	2.17	2.44	2.11	9.88	18000161 (18000_SS)	86	-5	50	
86.51	-6.28	48.03	48.44	97.45	86.28	-6.82	49.66	50.13	97.8	1.51	1.73	0.6	0.71	0.58	2.94	18000162 (18000_SS)	86	-6	48	
86.51	-6.28	48.03	48.44	97.45	85.71	-5.17	48.48	48.76	96.0	1.4	1.44	1.04	0.93	0.93	6.14	18000163 (18000_SS)	86	-5	48	
86.19	-9.47	72.63	73.25	97.43	85.29	-9.1	72.34	72.91	97.1	1.27	1.01	0.91	0.67	0.62	6.6	18000164 (18000_SS)	86	-9	72	
86.19	-9.47	72.63	73.25	97.43	84.52	-9.74	73.04	73.69	97.6	1.56	1.74	1.67	1.21	1.1	12.31	18000165 (18000_SS)	85	-9	72	
86.19	-9.47	72.63	73.25	97.43	84.66	-10.05	72.37	73.07	97.9	1.5	1.65	1.55	1.14	1.06	11.28	18000166 (18000_SS)	85	-9	72	
86.19	-9.47	72.63	73.25	97.43	84.89	-8.51	73.5	73.99	96.6	1.38	1.83	1.4	1.11	1.05	9.71	18000167 (18000_SS)	86	-8	73	
86.19	-9.47	72.63	73.25	97.43	85.68	-8.89	67.94	68.52	97.4	1.5	4.75	1.21	1.62	1.17	5.36	18000168 (18000_SS)	86	-9	70	
86.19	-9.47	72.63	73.25	97.43	85.39	-8.71	70.54	71.08	97.0	2.37	2.36	0.97	0.95	0.78	6.07	18000169 (18000_SS)	86	-9	71	
86.19	-9.47	72.63	73.25	97.43	86.07	-10.33	70.59	71.34	98.3	2.04	2.21	0.7	0.87	0.79	2.24	18000170 (18000_SS)	86	-9	71	
86.19	-9.47	72.63	73.25	97.43	85.25	-9.63	71.3	71.95	97.6	1.36	1.63	0.99	0.81	0.71	6.89	18000171 (18000_SS)	86	-9	71	
86.19	-9.47	72.63	73.25	97.43	84.63	-9.87	71.85	72.53	97.8	1.46	1.79	1.59	1.17	1.07	11.5	18000172 (18000_SS)	85	-9	72	
86.19	-9.47	72.63	73.25	97.43	84.6	-9.96	70.9	71.59	98.0	1.45	2.4	1.67	1.31	1.18	11.69	18000173 (18000_SS)	85	-9	71	
86.19	-9.47	72.63	73.25	97.43	84.59	-10.16	71.42	72.14	98.0	1.45	2.11	1.67	1.28	1.18	11.79	18000174 (18000_SS)	85	-9	72	
86.19	-9.47	72.63	73.25	97.43	85.31	-9.77	69.83	70.51	97.9	1.37	2.95	1.13	1.16	0.94	6.72	18000175 (18000_SS)	86	-9	71	
86.19	-9.47	72.63	73.25	97.43	85.76	-8.02	68.03	68.5	96.7	1.56	4.84	1.25	1.68	1.27	5.27	18000176 (18000_SS)	86	-8	70	
86.19	-9.47	72.63	73.25	97.43	84.75	-9.79	74.91	75.55	97.4	1.47	2.71	1.53	1.28	1.08	10.92	18000177 (18000_SS)	85	-9	73	
86.19	-9.47	72.63	73.25	97.43	84.52	-10.06	71.64	72.34	97.9	1.53	2.03	1.71	1.29	1.18	12.31	18000178 (18000_SS)	85	-9	72	
86.19	-9.47	72.63	73.25	97.43	85.9	-7.96	68.26	68.72	96.6	1.25	4.63	1.18	1.61	1.22	4.69	18000179 (18000_SS)	86	-8	70	
86.19	-9.47	72.63	73.25	97.43	85.68	-9.13	67.8	68.41	97.6	1.34	4.87	1.24	1.66	1.21	5.37	18000180 (18000_SS)	86	-9	70	
86.19	-9.47	72.63	73.25	97.43	85.43	-8.42	70.04	70.55	96.8	1.42	2.89	1.04	1.11	0.9	5.98	18000181 (18000_SS)	86	-8	71	
86.19	-9.47	72.63	73.25	97.43	84.68	-9.77	75.56	76.19	97.3	1.27	3.3	1.65	1.44	1.19	11.53	18000182 (18000_SS)	85	-9	74	
86.19	-9.47	72.63	73.25	97.43	85.21	-9.94	69.24	69.95	98.1	1.4	3.55	1.31	1.39	1.13	7.56	18000183 (18000_SS)	86	-9	70	
86.19	-9.47	72.63	73.25	97.43	84.6	-9.8	70.89	71.57	97.8	2.01	2.37	1.65	1.3	1.15	11.69	18000184 (18000_SS)	85	-9	71	
86.19	-9.47	72.63	73.25	97.43	84.64	-10.3	75.95	76.65	97.7	2.18	3.75	1.75	1.58	1.29	12.0	18000185 (18000_SS)	85	-9	74	
86.19	-9.47	72.63	73.25	97.43	84.39	-10.02	74.91	75.58	97.6	1.78	2.95	1.88	1.5	1.3	13.56	18000186 (18000_SS)	85	-9	73	
86.19	-9.47	72.63	73.25	97.43	84.06	-9.84	72.01	72.68	97.7	1.72	2.24	2.14	1.55	1.42	15.67	18000187 (18000_SS)	85	-9	72	
86.19	-9.47	72.63	73.25	97.43	84.5	-10.22	75.45	76.14	97.7	1.72	3.37	1.82	1.55	1.3	12.87	18000188 (18000_SS)	85	-9	74	
86.19	-9.47	72.63	73.25	97.43	84.87	-8.87	75.5	76.02	96.7	2.64	3.21	1.53	1.4	1.2	10.15	18000189 (18000_SS)	86	-9	74	
86.19	-9.47	72.63	73.25	97.43	85.45	-10.02	68.37	69.11	98.3	2.53	4.35	1.32	1.59	1.27	6.33	18000190 (18000_SS)	86	-9	70	
86.19	-9.47	72.63	73.25	97.43	84.61	-9.93	70.08	70.78	98.0	1.53	3.03	1.72	1.46	1.27	11.72	18000191 (18000_SS)	85	-9	71	
86.19	-9.47	72.63	73.25	97.43	86.05	-7.96	67.7	68.17	96.7	1.61	5.15	1.26	1.77	1.32	4.83	18000192 (18000_SS)	86	-8	70	
86.19	-9.47	72.63	73.25	97.43	85.71	-10.02	66.01	66.77	98.6	2.85	6.65	1.72	2.34	1.8	6.6	18000193 (18000_SS)	86	-9	69	
64.43	13.5	22.41	26.16	58.91	64.92	9.59	17.82	20.24	61.6	2.83	6.05	2.87	3.71	3.25	14.57	18000194 (18000_SS)	65	11	20	
64.43	13.5	22.41	26.16	58.91	64.1	14.8	22.42	26.86	56.5	1.58	1.33	0.9	1.58	1.04	3.89	18000195 (18000_SS)	64	14	22	
64.43	13.5	22.41	26.16	58.91	63.76	14.03	25.08	28.74	60.7	2.18	2.8	1.5	1.85	1.46	8.98	18000196 (18000_SS)	64	13	23	
64.43	13.5	22.41	26.16	58.91	64.01	13.5	20.35	24.42	56.4	1.67	2.09	1.19	1.84	1.27	6.0	18000197 (18000_SS)	64	13	21	
64.43	13.5	22.41	26.16	58.91	64.48	13.55	26.44	29.72	62.8	2.49	4.03	2.13	3.06	2.22	9.06	18000198 (18000_SS)	64	13	24	
64.43	13.5	22.41	26.16	58.91	65.11	9.65	17.27	19.78	60.8	3.16	6.45	3.05	3.8	3.4	16.33	18000199 (18000_SS)	65	11	19	

TUB registration: 20140801-XE98/XE98L0NA.TXT /.PS  
application for measurement of display or printer output, no separation  
TUB material: code=rh4ta

see similar files: <http://130.149.60.45/~farbmetrik/XE98/XE98LONA.TXT>  
<http://www.ps.bam.de> or <http://130.149.60.45/~farbmetrik>

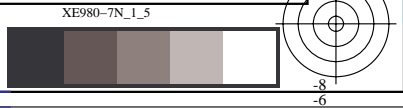
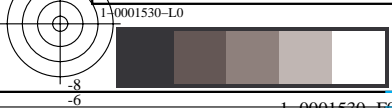
TUB registration: 20140801-XE98/XE98LONA.TXT /PS  
 application for measurement of display or printer output, no separation  
 TUB material: code=rh4ta

%L*0	a*0	b*0	C*ab0	hab0	L*1	a*1	b*1	C*ab1	hab1	DV	dE*ab	dE*94	dE*CM	dE*00	dE*85	NR	Code	L*	a*	b*	
%CIELAB data for all colour (a) of experiment, limp=446, colour difference pairs SS_0446=BIGC_S_SG %																					
64.43	13.5	22.41	26.16	58.91	64.87	10.06	18.61	21.16	61.5	2.94	5.14	2.46	3.21	2.77	12.29	18000200	(18000_SS)	65	11	20	
64.43	13.5	22.41	26.16	58.91	64.44	13.56	25.13	28.56	61.6	2.63	2.72	1.44	2.1	1.51	6.23	18000201	(18000_SS)	64	13	23	
64.43	13.5	22.41	26.16	58.91	64.25	15.37	23.48	28.06	56.7	1.74	2.16	1.14	1.7	1.25	4.72	18000202	(18000_SS)	64	14	22	
64.43	13.5	22.41	26.16	58.91	64.43	12.79	19.33	23.18	56.5	2.02	3.15	1.55	2.2	1.65	7.63	18000203	(18000_SS)	64	13	20	
64.43	13.5	22.41	26.16	58.91	64.15	14.46	23.36	27.47	58.2	1.53	1.37	0.7	0.84	0.71	3.96	18000204	(18000_SS)	64	13	22	
64.43	13.5	22.41	26.16	58.91	63.92	13.75	18.95	23.41	54.0	2.43	3.5	2.03	3.46	2.24	9.38	18000205	(18000_SS)	64	13	20	
64.43	13.5	22.41	26.16	58.91	64.7	11.65	17.6	21.11	56.4	3.07	5.15	2.44	3.18	2.6	12.86	18000206	(18000_SS)	65	12	20	
64.43	13.5	22.41	26.16	58.91	64.18	15.73	21.16	26.37	53.3	2.49	2.56	1.84	3.66	2.19	5.6	18000207	(18000_SS)	64	14	21	
64.43	13.5	22.41	26.16	58.91	64.91	11.44	17.01	20.5	56.0	2.84	5.79	2.76	3.63	2.96	15.02	18000208	(18000_SS)	65	12	19	
64.43	13.5	22.41	26.16	58.91	63.98	16.09	22.0	27.26	53.8	2.38	2.65	1.83	3.44	2.14	6.46	18000209	(18000_SS)	64	14	22	
64.43	13.5	22.41	26.16	58.91	64.29	14.74	21.32	25.92	55.3	1.52	1.65	1.18	2.31	1.4	3.67	18000210	(18000_SS)	64	14	21	
64.43	13.5	22.41	26.16	58.91	64.32	14.68	20.1	24.89	53.8	1.87	2.58	1.72	3.33	2.0	6.03	18000211	(18000_SS)	64	14	21	
64.43	13.5	22.41	26.16	58.91	64.59	13.5	19.4	23.63	55.1	2.04	3.01	1.65	2.73	1.81	7.56	18000212	(18000_SS)	65	13	20	
64.43	13.5	22.41	26.16	58.91	64.19	12.49	22.43	25.67	60.8	2.28	1.04	0.72	1.24	0.84	2.87	18000213	(18000_SS)	64	13	22	
64.43	13.5	22.41	26.16	58.91	64.95	9.86	15.42	18.3	57.4	3.39	7.89	3.66	4.62	4.05	20.0	18000214	(18000_SS)	65	11	18	
64.43	13.5	22.41	26.16	58.91	64.19	12.21	21.98	25.15	60.9	1.63	1.38	0.83	1.35	0.97	3.29	18000215	(18000_SS)	64	12	22	
64.43	13.5	22.41	26.16	58.91	64.25	12.77	23.08	26.38	61.0	1.49	1.0	0.72	1.31	0.85	2.68	18000216	(18000_SS)	64	13	22	
64.43	13.5	22.41	26.16	58.91	64.31	13.44	19.17	23.41	54.9	2.49	3.24	1.76	2.9	1.93	7.93	18000217	(18000_SS)	64	13	20	
64.43	13.5	22.41	26.16	58.91	64.25	11.39	21.64	24.46	62.2	2.02	2.25	1.32	2.18	1.57	4.6	18000218	(18000_SS)	64	12	22	
64.43	13.5	22.41	26.16	58.91	64.17	15.17	20.51	25.51	53.5	2.83	2.54	1.79	3.55	2.11	5.95	18000219	(18000_SS)	64	14	21	
65.88	-30.35	41.36	51.3	126.27	65.02	-31.38	43.37	53.54	125.8	1.0	2.42	1.11	1.11	0.98	8.59	18000220	(18000_SS)	65	-30	42	
65.88	-30.35	41.36	51.3	126.27	65.79	-30.58	38.05	48.82	128.7	1.8	3.31	1.45	1.5	1.37	5.2	18000221	(18000_SS)	66	-30	39	
65.88	-30.35	41.36	51.3	126.27	65.22	-32.09	43.42	53.99	126.4	1.18	2.77	1.05	1.15	0.96	7.26	18000222	(18000_SS)	66	-31	42	
65.88	-30.35	41.36	51.3	126.27	65.69	-31.42	42.17	52.59	126.6	1.08	1.35	0.48	0.55	0.45	2.62	18000223	(18000_SS)	66	-30	41	
65.88	-30.35	41.36	51.3	126.27	66.21	-28.82	36.21	46.28	128.5	1.74	5.38	1.89	2.23	1.88	9.25	18000224	(18000_SS)	66	-29	38	
65.88	-30.35	41.36	51.3	126.27	65.3	-31.72	43.38	53.74	126.1	1.15	2.5	0.94	1.04	0.86	6.52	18000225	(18000_SS)	66	-31	42	
65.88	-30.35	41.36	51.3	126.27	65.98	-30.6	39.18	49.72	127.9	1.73	2.19	0.98	1.0	0.92	3.55	18000226	(18000_SS)	66	-30	40	
65.88	-30.35	41.36	51.3	126.27	65.42	-31.54	46.66	56.32	124.0	1.51	5.45	1.97	2.2	1.84	9.01	18000227	(18000_SS)	66	-30	44	
65.88	-30.35	41.36	51.3	126.27	66.16	-28.99	36.62	46.71	128.3	1.63	4.93	1.73	2.05	1.72	8.37	18000228	(18000_SS)	66	-29	38	
65.88	-30.35	41.36	51.3	126.27	66.11	-27.67	33.88	43.74	129.2	2.07	7.94	2.68	3.29	2.74	13.21	18000229	(18000_SS)	66	-29	37	
65.88	-30.35	41.36	51.3	126.27	66.79	-29.15	36.57	46.77	128.5	1.99	5.01	1.97	2.18	1.89	11.64	18000230	(18000_SS)	66	-29	38	
65.88	-30.35	41.36	51.3	126.27	65.73	-30.84	41.98	52.09	126.3	0.92	0.8	0.28	0.32	0.26	1.85	18000231	(18000_SS)	66	-30	41	
65.88	-30.35	41.36	51.3	126.27	66.03	-28.21	35.56	45.4	128.4	2.04	6.18	2.06	2.53	2.09	10.01	18000232	(18000_SS)	66	-29	38	
65.88	-30.35	41.36	51.3	126.27	65.87	-29.47	38.85	48.77	127.1	0.85	2.65	0.88	1.07	0.88	4.06	18000233	(18000_SS)	66	-29	40	
65.88	-30.35	41.36	51.3	126.27	65.63	-28.52	41.95	50.73	124.2	1.21	1.94	1.08	1.0	0.99	3.39	18000234	(18000_SS)	66	-29	41	
65.88	-30.35	41.36	51.3	126.27	65.73	-30.0	42.6	52.1	125.1	1.13	1.29	0.64	0.62	0.59	2.42	18000235	(18000_SS)	66	-30	41	
65.88	-30.35	41.36	51.3	126.27	65.7	-30.93	42.48	52.55	126.0	0.98	1.27	0.43	0.5	0.41	2.54	18000236	(18000_SS)	66	-30	41	
65.88	-30.35	41.36	51.3	126.27	65.36	-30.85	39.36	50.02	128.0	1.38	2.12	1.11	1.06	1.01	5.4	18000237	(18000_SS)	66	-30	40	
65.88	-30.35	41.36	51.3	126.27	65.57	-31.71	41.35	52.11	127.4	1.31	1.39	0.73	0.69	0.66	3.32	18000238	(18000_SS)	66	-31	41	
65.88	-30.35	41.36	51.3	126.27	66.5	-28.06	34.53	44.5	129.1	2.23	7.22	2.52	3.02	2.54	13.27	18000239	(18000_SS)	66	-29	37	
65.88	-30.35	41.36	51.3	126.27	66.03	-28.92	36.94	46.92	128.0	1.89	4.64	1.58	1.9	1.58	7.52	18000240	(18000_SS)	66	-29	39	
65.88	-30.35	41.36	51.3	126.27	65.58	-32.97	44.38	55.29	126.6	1.9	4.01	1.25	1.53	1.2	6.38	18000241	(18000_SS)	66	-31	42	
65.88	-30.35	41.36	51.3	126.27	65.1	-31.74	46.34	56.17	124.4	1.58	5.23	1.93	2.13	1.79	10.52	18000242	(18000_SS)	65	-31	43	
65.88	-30.35	41.36	51.3	126.27	65.95	-29.29	37.63	47.69	127.8	2.11	3.87	1.34	1.59	1.33	6.14	18000243	(18000_SS)	66	-29	39	
65.88	-30.35	41.36	51.3	126.27	65.67	-30.23	38.24	48.75	128.3	1.73	3.12	1.29	1.38	1.23	5.08	18000244	(18000_SS)	66	-30	39	
65.88	-30.35	41.36	51.3	126.27	65.56	-32.07	43.99	54.44	126.0	1.6	3.15	1.0	1.22	0.97	5.54	18000245	(18000_SS)	66	-31	42	
65.88	-30.35	41.36	51.3	126.27	65.72	-30.45	44.77	54.15	124.2	1.38	3.42	1.38	1.46	1.29	5.29	18000246	(18000_SS)	66	-30	43	
65.88	-30.35	41.36	51.3	126.27	65.21	-32.31	42.61	53.48	127.1	1.65	2.41	1.04	1.07	0.94	6.95	18000247	(18000_SS)	66	-31	41	
57.92	-32.46	1.0	32.48	178.23	56.72	-32.54	2.39	32.63	175.7	2.25	1.83	1.52	1.35	1.43	12.78	18000248	(18000_SS)	57	-32	1	
57.92	-32.46	1.0	32.48	178.23	57.66	-34.2	0.8	34.21	178.6	1.68	1.77	0.77	0.86	0.75	3.54	18000249	(18000_SS)	58	-33	0	

see similar files: <http://130.149.60.45/~farbmetrik/XE98/XE98LONA.TXT>  
technical information: <http://www.ps.bam.de> or <http://130.149.60.45/~farbmetrik>

%L*0	a*0	b*0	C*ab0	hab0	L*1	a*1	b*1	C*ab1	hab1	DV	dE*ab	dE*94	dE*CM	dE*00	dE*85	NR	Code	L*	a*	b*	
%CIELAB data for all colour (a) of experiment, limp=446, colour difference pairs SS_0446=BIGC_S_SG %																					
57.92	-32.46	1.0	32.48	178.23	57.64	-32.51	-2.71	32.62	184.7	3.33	3.73	2.51	2.35	2.51	16.01	18000250	(18000_SS)	58	-32	0 %	
57.92	-32.46	1.0	32.48	178.23	57.7	-31.01	-1.75	31.06	183.2	3.0	3.12	1.96	1.91	1.97	11.98	18000251	(18000_SS)	58	-31	0 %	
57.92	-32.46	1.0	32.48	178.23	57.8	-27.11	0.57	27.11	178.7	2.98	5.37	2.19	2.68	2.35	7.49	18000252	(18000_SS)	58	-29	0 %	
57.92	-32.46	1.0	32.48	178.23	57.82	-35.63	-1.11	35.65	181.7	3.28	3.81	1.92	1.97	1.88	9.87	18000253	(18000_SS)	58	-34	0 %	
57.92	-32.46	1.0	32.48	178.23	57.64	-28.72	-2.38	28.82	184.7	3.38	5.05	2.78	2.89	2.85	15.37	18000254	(18000_SS)	58	-30	0 %	
57.92	-32.46	1.0	32.48	178.23	57.57	-28.63	-1.57	28.67	183.1	3.12	4.62	2.36	2.54	2.43	12.39	18000255	(18000_SS)	58	-30	0 %	
57.92	-32.46	1.0	32.48	178.23	57.15	-32.46	-1.74	32.51	183.0	3.1	2.84	1.99	1.85	1.96	13.74	18000256	(18000_SS)	58	-32	0 %	
57.92	-32.46	1.0	32.48	178.23	57.33	-35.28	1.96	35.33	176.8	2.59	3.03	1.42	1.52	1.37	7.96	18000257	(18000_SS)	58	-33	1 %	
57.92	-32.46	1.0	32.48	178.23	57.52	-31.62	-0.43	31.63	180.7	2.42	1.71	1.09	1.05	1.08	7.18	18000258	(18000_SS)	58	-32	0 %	
57.92	-32.46	1.0	32.48	178.23	57.67	-33.09	-0.13	33.09	180.2	1.72	1.32	0.84	0.8	0.83	5.4	18000259	(18000_SS)	58	-32	0 %	
57.92	-32.46	1.0	32.48	178.23	57.95	-28.51	1.36	28.55	177.2	2.63	3.96	1.63	1.96	1.72	5.53	18000260	(18000_SS)	58	-30	1 %	
57.92	-32.46	1.0	32.48	178.23	57.88	-29.68	1.74	29.74	176.6	2.22	2.87	1.25	1.45	1.3	4.78	18000261	(18000_SS)	58	-31	1 %	
57.92	-32.46	1.0	32.48	178.23	57.04	-32.35	3.09	32.5	174.5	2.63	2.27	1.66	1.53	1.6	11.96	18000262	(18000_SS)	57	-32	2 %	
57.92	-32.46	1.0	32.48	178.23	57.12	-35.02	1.16	35.04	178.1	1.97	2.68	1.31	1.38	1.26	8.47	18000263	(18000_SS)	58	-33	1 %	
57.92	-32.46	1.0	32.48	178.23	57.74	-30.76	0.73	30.76	178.6	1.84	1.73	0.73	0.85	0.75	2.95	18000264	(18000_SS)	58	-31	0 %	
57.92	-32.46	1.0	32.48	178.23	58.15	-31.89	0.82	31.9	178.5	1.85	0.63	0.34	0.35	0.33	2.42	18000265	(18000_SS)	58	-32	0 %	
57.92	-32.46	1.0	32.48	178.23	57.76	-34.66	-2.85	34.78	184.7	3.51	4.44	2.72	2.59	2.69	16.69	18000266	(18000_SS)	58	-33	0 %	
57.92	-32.46	1.0	32.48	178.23	57.95	-29.67	-0.54	29.67	181.0	2.33	3.19	1.53	1.68	1.57	7.48	18000267	(18000_SS)	58	-31	0 %	
57.92	-32.46	1.0	32.48	178.23	57.72	-32.42	0.21	32.42	179.6	2.16	0.81	0.56	0.52	0.55	3.77	18000268	(18000_SS)	58	-32	0 %	
57.92	-32.46	1.0	32.48	178.23	57.89	-31.36	-2.36	31.45	184.3	3.11	3.54	2.31	2.21	2.32	14.31	18000269	(18000_SS)	58	-31	0 %	
58.71	-37.79	0.64	37.79	179.01	57.77	-34.4	2.32	34.48	176.1	2.02	3.89	1.93	2.02	1.92	11.77	18000270	(18000_SS)	58	-36	1 %	
58.71	-37.79	0.64	37.79	179.01	59.29	-40.47	3.89	40.66	174.5	2.67	4.25	2.31	2.23	2.25	14.14	18000271	(18000_SS)	59	-39	2 %	
58.71	-37.79	0.64	37.79	179.01	59.01	-37.15	0.11	37.15	179.8	1.49	0.88	0.5	0.49	0.49	3.69	18000272	(18000_SS)	59	-37	0 %	
58.71	-37.79	0.64	37.79	179.01	56.87	-37.24	0.4	37.24	179.3	1.47	1.93	1.85	1.59	1.68	17.39	18000273	(18000_SS)	58	-37	0 %	
58.71	-37.79	0.64	37.79	179.01	58.3	-38.79	1.63	38.82	177.5	1.37	1.46	0.83	0.8	0.8	5.81	18000274	(18000_SS)	59	-38	1 %	
58.71	-37.79	0.64	37.79	179.01	57.98	-34.59	1.2	34.61	178.0	1.62	3.33	1.44	1.61	1.44	8.06	18000275	(18000_SS)	58	-36	0 %	
58.71	-37.79	0.64	37.79	179.01	58.96	-35.84	-3.56	36.01	185.6	3.6	4.64	2.82	2.67	2.87	18.07	18000276	(18000_SS)	59	-36	-1 %	
58.71	-37.79	0.64	37.79	179.01	58.55	-36.98	-1.2	37.0	181.8	3.12	2.02	1.23	1.16	1.24	7.97	18000277	(18000_SS)	59	-37	0 %	
58.71	-37.79	0.64	37.79	179.01	58.52	-37.4	0.57	37.41	179.1	1.69	0.43	0.24	0.24	0.22	1.86	18000278	(18000_SS)	59	-37	0 %	
58.71	-37.79	0.64	37.79	179.01	58.99	-37.56	-0.19	37.56	180.2	1.96	0.91	0.61	0.55	0.59	4.39	18000279	(18000_SS)	59	-37	0 %	
58.71	-37.79	0.64	37.79	179.01	58.34	-38.02	0.18	38.02	179.7	1.29	0.63	0.48	0.43	0.45	4.02	18000280	(18000_SS)	59	-37	0 %	
58.71	-37.79	0.64	37.79	179.01	59.02	-37.13	0.16	37.13	179.7	1.37	0.86	0.49	0.48	0.47	3.63	18000281	(18000_SS)	59	-37	0 %	
58.71	-37.79	0.64	37.79	179.01	58.36	-40.19	6.89	40.78	170.2	3.52	6.7	3.99	3.72	3.86	24.36	18000282	(18000_SS)	59	-38	3 %	
58.71	-37.79	0.64	37.79	179.01	58.28	-32.73	2.26	32.8	176.0	2.61	5.33	2.22	2.57	2.3	9.83	18000283	(18000_SS)	59	-35	1 %	
58.71	-37.79	0.64	37.79	179.01	59.35	-34.82	-5.09	35.19	188.3	4.06	6.49	3.94	3.75	4.03	25.24	18000284	(18000_SS)	59	-36	-2 %	
58.71	-37.79	0.64	37.79	179.01	59.24	-35.72	-2.88	35.83	184.6	3.43	4.13	2.46	2.35	2.49	15.88	18000285	(18000_SS)	59	-36	-1 %	
58.71	-37.79	0.64	37.79	179.01	58.6	-37.15	-1.64	37.19	182.5	3.01	2.38	1.49	1.38	1.5	9.73	18000286	(18000_SS)	59	-37	0 %	
58.71	-37.79	0.64	37.79	179.01	58.71	-36.73	-1.71	36.77	182.6	2.87	2.59	1.56	1.48	1.58	10.02	18000287	(18000_SS)	59	-37	0 %	
58.71	-37.79	0.64	37.79	179.01	59.08	-37.64	-0.88	37.65	181.3	2.29	1.58	1.04	0.95	1.03	7.27	18000288	(18000_SS)	59	-37	0 %	
58.71	-37.79	0.64	37.79	179.01	58.45	-37.39	0.32	37.39	179.4	1.62	0.57	0.35	0.33	0.34	2.77	18000289	(18000_SS)	59	-37	0 %	
58.71	-37.79	0.64	37.79	179.01	58.95	-38.64	0.01	38.64	179.9	2.05	1.08	0.56	0.56	0.55	3.53	18000290	(18000_SS)	59	-38	0 %	
58.71	-37.79	0.64	37.79	179.01	58.44	-39.6	2.43	39.68	176.4	2.34	2.56	1.32	1.31	1.3	8.02	18000291	(18000_SS)	59	-38	1 %	
58.71	-37.79	0.64	37.79	179.01	58.38	-39.78	6.03	40.24	171.3	3.29	5.75	3.45	3.22	3.36	21.24	18000292	(18000_SS)	59	-38	3 %	
58.71	-37.79	0.64	37.79	179.01	58.18	-38.81	3.52	38.97	174.8	2.63	3.1	1.92	1.78	1.88	12.67	18000293	(18000_SS)	58	-38	2 %	
51.45	-16.7	-10.33	19.64	211.75	50.26	-13.81	-14.36	19.92	226.1	3.66	5.1	4.0	4.22	3.96	23.99	18000294	(18000_SS)	51	-15	-12 %	
51.45	-16.7	-10.33	19.64	211.75	50.74	-13.85	-8.94	16.49	212.8	1.92	3.24	1.83	2.12	2.14	10.43	18000295	(18000_SS)	51	-15	-9 %	
51.45	-16.7	-10.33	19.64	211.75	52.14	-15.75	-12.35	20.02	218.0	2.92	2.33	1.84	1.91	1.79	11.47	18000296	(18000_SS)	52	-16	-11 %	
51.45	-16.7	-10.33	19.64	211.75	50.04	-17.98	-9.56	20.36	208.0	2.16	2.05	1.77	1.72	1.8	14.73	18000297	(18000_SS)	51	-17	-9 %	
51.45	-16.7	-10.33	19.64	211.75	51.2	-18.16	-12.29	21.93	214.0	2.45	2.45	1.39	1.53	1.37	10.07	18000298	(18000_SS)	51	-17	-11 %	
51.45	-16.7	-10.33	19.64	211.75	50.49	-14.29	-10.74	17.88	216.9	2.39	2.62	1.86	1.99	2.07	10.65	18000299	(18000_SS)	51	-15	-10 %	

TUB registration: 20140801-XE98/XE98LONA.TXT /PS  
application for measurement of display or printer output, no separation  
TUB material: code=rh4ta





see similar files: http://130.149.60.45/~farbmetrik/XE98/XE98.HTM  
technical information: http://www.ps.bam.de or http://130.149.60.45/~farbmetrik

TUB registration: 20140801-XE98/XE98LONA.TXT /PS  
application for measurement of display or printer output, no separation  
TUB material: code=rh4ta

%L*0	a*0	b*0	C*ab0	hab0	L*1	a*1	b*1	C*ab1	hab1	DV	dE*ab	dE*94	dE*CM	dE*00	dE*85	NR	Code	L*	a*	b*
%CIELAB data for all colour (a) of experiment, limp=446, colour difference pairs SS_0446=BIGC_S_SG %																				
51.45	-16.7	-10.33	19.64	211.75	50.49	-16.12	-12.06	20.14	216.8	2.17	2.05	1.67	1.69	1.63	13.15	18000300	(18000_SS)	51	-16	-11 %
51.45	-16.7	-10.33	19.64	211.75	50.35	-15.21	-9.49	17.93	211.9	1.66	2.03	1.42	1.46	1.51	11.7	18000301	(18000_SS)	51	-15	-9 %
51.45	-16.7	-10.33	19.64	211.75	50.94	-17.84	-10.42	20.66	210.3	1.61	1.24	0.84	0.87	0.9	5.62	18000302	(18000_SS)	51	-17	-10 %
51.45	-16.7	-10.33	19.64	211.75	51.59	-17.4	-11.84	21.05	214.2	2.02	1.66	1.01	1.1	0.97	7.22	18000303	(18000_SS)	52	-17	-11 %
51.45	-16.7	-10.33	19.64	211.75	50.4	-16.55	-11.48	20.14	214.7	2.23	1.56	1.34	1.31	1.31	12.24	18000304	(18000_SS)	51	-16	-10 %
51.45	-16.7	-10.33	19.64	211.75	50.31	-13.78	-13.42	19.24	224.2	3.41	4.39	3.46	3.66	3.51	19.97	18000305	(18000_SS)	51	-15	-11 %
51.45	-16.7	-10.33	19.64	211.75	51.97	-13.43	-13.26	18.87	224.6	3.54	4.42	3.4	3.66	3.51	15.52	18000306	(18000_SS)	52	-15	-11 %
51.45	-16.7	-10.33	19.64	211.75	50.63	-13.62	-9.07	16.36	213.6	2.4	3.43	1.97	2.27	2.32	11.05	18000307	(18000_SS)	51	-15	-9 %
51.45	-16.7	-10.33	19.64	211.75	50.75	-13.37	-8.39	15.79	212.1	2.42	3.91	2.16	2.55	2.54	12.45	18000308	(18000_SS)	51	-15	-9 %
51.45	-16.7	-10.33	19.64	211.75	51.86	-13.52	-13.43	19.06	224.8	3.72	4.45	3.43	3.69	3.51	15.91	18000309	(18000_SS)	52	-15	-11 %
51.45	-16.7	-10.33	19.64	211.75	51.01	-18.08	-13.3	22.45	216.3	3.06	3.29	2.02	2.16	1.9	15.29	18000310	(18000_SS)	51	-17	-11 %
51.45	-16.7	-10.33	19.64	211.75	50.93	-18.99	-13.53	23.32	215.4	3.07	3.96	2.28	2.45	2.2	16.92	18000311	(18000_SS)	51	-17	-11 %
51.45	-16.7	-10.33	19.64	211.75	50.67	-18.84	-12.85	22.81	214.3	2.86	3.39	1.98	2.12	1.95	15.3	18000312	(18000_SS)	51	-17	-11 %
51.45	-16.7	-10.33	19.64	211.75	49.94	-13.73	-13.48	19.24	224.4	3.63	4.58	3.66	3.83	3.7	22.76	18000313	(18000_SS)	51	-15	-11 %
50.73	-21.62	-21.83	30.72	225.28	50.63	-25.8	-16.56	30.66	212.7	3.74	6.72	4.6	4.47	4.14	26.22	18000314	(18000_SS)	51	-23	-19 %
50.73	-21.62	-21.83	30.72	225.28	51.38	-21.23	-19.87	29.08	223.1	1.46	2.1	1.22	1.27	1.16	12.42	18000315	(18000_SS)	51	-21	-20 %
50.73	-21.62	-21.83	30.72	225.28	50.79	-20.56	-18.15	27.42	221.4	2.49	3.83	1.92	2.13	1.84	18.03	18000316	(18000_SS)	51	-21	-19 %
50.73	-21.62	-21.83	30.72	225.28	50.81	-19.69	-18.01	26.69	222.4	2.3	4.27	1.95	2.27	1.95	18.92	18000317	(18000_SS)	51	-20	-19 %
50.73	-21.62	-21.83	30.72	225.28	50.8	-18.91	-16.85	25.33	221.7	2.88	5.67	2.56	3.03	2.6	24.64	18000318	(18000_SS)	51	-20	-19 %
50.73	-21.62	-21.83	30.72	225.28	50.75	-18.66	-15.93	24.54	220.4	3.33	6.6	3.03	3.59	3.09	29.02	18000319	(18000_SS)	51	-20	-18 %
50.73	-21.62	-21.83	30.72	225.28	51.2	-23.76	-19.91	31.0	219.9	1.33	2.91	2.01	1.96	1.8	11.5	18000320	(18000_SS)	51	-22	-20 %
50.73	-21.62	-21.83	30.72	225.28	50.98	-24.74	-20.6	32.19	219.7	1.76	3.36	2.17	2.13	1.95	8.3	18000321	(18000_SS)	51	-23	-21 %
50.73	-21.62	-21.83	30.72	225.28	51.92	-25.67	-20.51	32.86	218.6	2.77	4.42	2.93	2.85	2.68	15.48	18000322	(18000_SS)	51	-23	-21 %
50.73	-21.62	-21.83	30.72	225.28	50.55	-23.64	-17.11	29.18	215.8	3.44	5.14	3.42	3.4	3.08	22.96	18000323	(18000_SS)	51	-22	-19 %
50.73	-21.62	-21.83	30.72	225.28	51.52	-21.61	-20.61	29.87	223.6	1.4	1.45	1.05	1.02	1.0	10.68	18000324	(18000_SS)	51	-21	-21 %
50.73	-21.62	-21.83	30.72	225.28	51.55	-27.12	-16.12	31.55	210.7	4.8	7.97	5.47	5.26	4.94	30.85	18000325	(18000_SS)	51	-24	-18 %
50.73	-21.62	-21.83	30.72	225.28	50.76	-22.98	-23.99	33.22	226.2	3.24	2.55	1.1	1.25	1.06	10.66	18000326	(18000_SS)	51	-22	-22 %
50.73	-21.62	-21.83	30.72	225.28	51.0	-23.22	-24.47	33.74	226.5	3.47	3.1	1.37	1.53	1.31	12.89	18000327	(18000_SS)	51	-22	-23 %
50.73	-21.62	-21.83	30.72	225.28	51.82	-25.28	-20.85	32.78	219.5	2.37	3.94	2.58	2.52	2.38	13.63	18000328	(18000_SS)	51	-23	-21 %
50.73	-21.62	-21.83	30.72	225.28	51.52	-22.91	-24.98	33.9	227.4	3.77	3.49	1.76	1.87	1.66	16.12	18000329	(18000_SS)	51	-22	-23 %
50.73	-21.62	-21.83	30.72	225.28	51.47	-24.03	-23.83	33.85	224.7	3.36	3.22	1.51	1.65	1.49	11.76	18000330	(18000_SS)	51	-22	-22 %
50.73	-21.62	-21.83	30.72	225.28	51.5	-19.87	-23.82	31.02	230.1	3.37	2.75	1.95	1.91	1.74	11.8	18000331	(18000_SS)	51	-20	-22 %
50.73	-21.62	-21.83	30.72	225.28	50.79	-19.9	-24.08	31.24	230.4	3.73	2.82	1.91	1.9	1.66	11.18	18000332	(18000_SS)	51	-20	-22 %
50.73	-21.62	-21.83	30.72	225.28	51.34	-21.94	-21.53	30.75	224.4	1.58	0.75	0.68	0.62	0.66	6.59	18000333	(18000_SS)	51	-21	-21 %
50.73	-21.62	-21.83	30.72	225.28	51.04	-20.02	-23.0	30.49	228.9	2.97	1.99	1.38	1.36	1.22	6.58	18000334	(18000_SS)	51	-20	-22 %
50.73	-21.62	-21.83	30.72	225.28	50.99	-19.01	-24.34	30.88	232.0	4.13	3.62	2.48	2.47	2.16	12.77	18000335	(18000_SS)	51	-20	-23 %
50.73	-21.62	-21.83	30.72	225.28	51.61	-18.41	-22.13	28.79	230.2	3.89	3.33	2.13	2.17	2.02	10.45	18000336	(18000_SS)	51	-20	-21 %
36.71	6.19	-44.41	44.84	277.93	36.64	7.37	-45.76	46.35	279.1	1.21	1.79	0.76	0.92	0.41	7.63	18000337	(18000_SS)	37	6	-45 %
36.71	6.19	-44.41	44.84	277.93	36.2	7.72	-44.49	45.16	279.8	1.52	1.61	1.03	1.21	1.13	7.34	18000338	(18000_SS)	36	6	-44 %
36.71	6.19	-44.41	44.84	277.93	35.59	4.69	-44.12	44.37	276.0	1.72	1.89	1.42	1.62	1.33	13.45	18000339	(18000_SS)	36	5	-44 %
36.71	6.19	-44.41	44.84	277.93	36.94	6.11	-46.59	46.99	277.4	1.43	2.19	0.78	0.94	0.96	10.15	18000340	(18000_SS)	37	6	-45 %
36.71	6.19	-44.41	44.84	277.93	36.91	6.29	-46.83	47.25	277.6	1.92	2.42	0.83	1.0	0.94	11.33	18000341	(18000_SS)	37	6	-45 %
36.71	6.19	-44.41	44.84	277.93	35.51	6.74	-43.11	43.64	278.8	1.23	1.85	1.34	1.51	1.36	13.73	18000342	(18000_SS)	36	6	-43 %
36.71	6.19	-44.41	44.84	277.93	35.47	5.92	-43.18	43.58	277.8	1.71	1.77	1.31	1.47	1.09	14.02	18000343	(18000_SS)	36	6	-43 %
36.71	6.19	-44.41	44.84	277.93	36.5	6.75	-43.32	43.85	278.8	1.91	1.24	0.58	0.7	0.86	5.35	18000344	(18000_SS)	37	6	-43 %
36.71	6.19	-44.41	44.84	277.93	35.15	7.52	-47.44	48.03	279.0	1.73	3.65	1.95	2.24	1.42	28.29	18000345	(18000_SS)	36	6	-45 %
36.71	6.19	-44.41	44.84	277.93	35.12	5.87	-44.65	45.04	277.4	1.99	1.63	1.6	1.78	1.36	19.61	18000346	(18000_SS)	36	6	-44 %
36.71	6.19	-44.41	44.84	277.93	35.83	6.49	-46.58	47.03	277.9	1.26	2.36	1.14	1.32	1.02	17.7	18000347	(18000_SS)	36	6	-45 %
36.71	6.19	-44.41	44.84	277.93	35.7	4.74	-44.04	44.3	276.1	1.59	1.8	1.32	1.5	1.22	12.1	18000348	(18000_SS)	36	5	-44 %
36.71	6.19	-44.41	44.84	277.93	35.73	4.45	-43.88	44.11	275.7	1.8	2.06	1.42	1.63	1.32	11.88	18000349	(18000_SS)	36	5	-44 %

%L*0	a*0	b*0	C*ab0	hab0	L*1	a*1	b*1	C*ab1	hab1	DV	dE*ab	dE*94	dE*CM	dE*00	dE*85	NR	Code	L*	a*	b*
*%CIELAB data for all colour (a) of experiment, iimp=446, colour difference pairs SS_0446=BIGC_S_SG %																				
36.71	6.19	-44.41	44.84	277.93	35.67	8.47	-45.76	46.54	280.4	1.87	2.84	1.7	1.98	1.41	17.25	18000350 (18000_SS)	36	7	-45 %	
36.71	6.19	-44.41	44.84	277.93	36.36	9.17	-46.87	47.76	281.0	1.55	3.88	1.83	2.18	1.26	16.01	18000351 (18000_SS)	37	7	-45 %	
36.71	6.19	-44.41	44.84	277.93	37.24	5.34	-45.96	46.27	276.6	2.03	1.84	0.93	1.09	1.27	8.31	18000352 (18000_SS)	37	5	-45 %	
36.71	6.19	-44.41	44.84	277.93	35.2	7.99	-48.35	49.0	279.3	2.12	4.58	2.16	2.5	1.46	31.45	18000353 (18000_SS)	36	7	-46 %	
36.71	6.19	-44.41	44.84	277.93	36.79	4.16	-43.21	43.41	275.5	1.97	2.35	1.21	1.46	1.01	8.08	18000354 (18000_SS)	37	5	-43 %	
36.71	6.19	-44.41	44.84	277.93	35.21	7.98	-48.11	48.77	279.4	1.94	4.37	2.11	2.45	1.43	30.48	18000355 (18000_SS)	36	7	-46 %	
36.71	6.19	-44.41	44.84	277.93	37.02	3.88	-43.33	43.51	275.1	1.86	2.56	1.4	1.67	1.27	9.42	18000356 (18000_SS)	37	5	-43 %	
36.71	6.19	-44.41	44.84	277.93	35.27	7.03	-42.6	43.18	279.3	1.96	2.46	1.68	1.91	1.8	16.74	18000357 (18000_SS)	36	6	-43 %	
36.71	6.19	-44.41	44.84	277.93	34.98	8.14	-48.33	49.01	279.5	2.1	4.71	2.35	2.71	1.61	33.72	18000358 (18000_SS)	36	7	-46 %	
36.71	6.19	-44.41	44.84	277.93	34.78	8.07	-44.25	44.98	280.3	1.7	2.7	2.23	2.54	2.12	23.58	18000359 (18000_SS)	36	7	-44 %	
46.75	26.27	-26.27	37.15	315.0	47.63	24.15	-25.84	35.38	313.0	1.41	2.33	1.36	1.43	1.36	11.29	18000360 (18000_SS)	47	25	-26 %	
46.75	26.27	-26.27	37.15	315.0	46.68	26.02	-29.4	39.27	311.5	2.26	3.14	1.69	1.81	1.84	15.93	18000361 (18000_SS)	47	26	-27 %	
46.75	26.27	-26.27	37.15	315.0	46.95	26.25	-31.02	40.64	310.2	2.6	4.75	2.46	2.63	2.67	23.51	18000362 (18000_SS)	47	26	-28 %	
46.75	26.27	-26.27	37.15	315.0	46.33	25.72	-22.46	34.15	318.8	2.62	3.87	1.95	2.16	2.07	18.93	18000363 (18000_SS)	47	25	-24 %	
46.75	26.27	-26.27	37.15	315.0	46.28	26.36	-24.82	36.21	316.7	1.71	1.52	0.92	0.96	0.95	8.05	18000364 (18000_SS)	47	26	-25 %	
46.75	26.27	-26.27	37.15	315.0	46.41	26.22	-30.59	40.3	310.6	3.11	4.33	2.26	2.42	2.46	22.82	18000365 (18000_SS)	47	26	-28 %	
46.75	26.27	-26.27	37.15	315.0	46.87	25.87	-31.03	40.4	309.8	3.2	4.77	2.56	2.72	2.8	23.68	18000366 (18000_SS)	47	26	-28 %	
46.75	26.27	-26.27	37.15	315.0	47.67	27.25	-25.01	36.99	317.4	1.9	1.83	1.37	1.37	1.39	12.65	18000367 (18000_SS)	47	26	-25 %	
46.75	26.27	-26.27	37.15	315.0	46.61	26.35	-29.33	39.43	311.9	2.59	3.06	1.57	1.69	1.7	15.79	18000368 (18000_SS)	47	26	-27 %	
46.75	26.27	-26.27	37.15	315.0	46.59	26.31	-27.77	38.25	313.4	1.68	1.5	0.78	0.85	0.84	8.07	18000369 (18000_SS)	47	26	-27 %	
46.75	26.27	-26.27	37.15	315.0	47.5	26.05	-27.6	37.95	313.3	1.55	1.54	1.07	1.08	1.1	9.39	18000370 (18000_SS)	47	26	-26 %	
46.75	26.27	-26.27	37.15	315.0	46.85	24.34	-27.08	36.41	311.9	2.08	2.09	1.29	1.36	1.36	5.74	18000371 (18000_SS)	47	25	-26 %	
46.75	26.27	-26.27	37.15	315.0	47.29	27.09	-25.09	36.93	317.1	2.22	1.53	1.06	1.08	1.09	9.09	18000372 (18000_SS)	47	26	-25 %	
46.75	26.27	-26.27	37.15	315.0	46.56	26.59	-25.41	36.78	316.3	1.68	0.93	0.58	0.61	0.62	4.49	18000373 (18000_SS)	47	26	-25 %	
46.75	26.27	-26.27	37.15	315.0	47.74	23.88	-26.9	35.97	311.6	2.63	2.66	1.76	1.82	1.82	11.91	18000374 (18000_SS)	47	25	-26 %	
46.75	26.27	-26.27	37.15	315.0	46.94	25.89	-24.21	35.45	316.9	1.39	2.09	1.02	1.13	1.09	10.97	18000375 (18000_SS)	47	26	-25 %	
46.75	26.27	-26.27	37.15	315.0	46.91	26.46	-32.26	41.73	309.3	3.54	5.99	3.02	3.23	3.28	29.74	18000376 (18000_SS)	47	26	-29 %	
46.75	26.27	-26.27	37.15	315.0	46.76	26.26	-32.15	41.51	309.2	3.57	5.88	3.01	3.22	3.29	29.54	18000377 (18000_SS)	47	26	-29 %	
46.75	26.27	-26.27	37.15	315.0	47.0	29.3	-30.96	42.63	313.4	2.62	5.59	2.18	2.48	2.16	23.93	18000378 (18000_SS)	47	27	-28 %	
46.75	26.27	-26.27	37.15	315.0	46.4	26.5	-29.55	39.69	311.8	2.66	3.3	1.68	1.81	1.8	17.7	18000379 (18000_SS)	47	26	-27 %	
46.75	26.27	-26.27	37.15	315.0	47.64	23.33	-28.17	36.58	309.6	2.92	3.61	2.4	2.51	2.57	13.83	18000380 (18000_SS)	47	24	-27 %	
46.75	26.27	-26.27	37.15	315.0	46.62	26.54	-32.02	41.6	309.6	3.15	5.76	2.88	3.09	3.13	29.26	18000381 (18000_SS)	47	26	-29 %	
46.75	26.27	-26.27	37.15	315.0	47.21	29.63	-32.44	43.93	312.4	2.72	7.03	2.83	3.17	2.82	30.93	18000382 (18000_SS)	47	27	-29 %	
46.75	26.27	-26.27	37.15	315.0	47.07	29.54	-32.57	43.97	312.2	2.67	7.1	2.86	3.2	2.87	31.68	18000383 (18000_SS)	47	27	-29 %	
46.75	26.27	-26.27	37.15	315.0	47.82	24.29	-24.13	34.25	315.1	1.74	3.1	1.52	1.67	1.53	17.72	18000384 (18000_SS)	47	25	-25 %	
46.75	26.27	-26.27	37.15	315.0	46.58	25.81	-23.47	34.88	317.7	1.96	2.84	1.39	1.55	1.48	13.92	18000385 (18000_SS)	47	26	-24 %	
46.75	26.27	-26.27	37.15	315.0	46.93	27.91	-24.76	37.31	318.4	2.23	2.23	1.44	1.48	1.48	8.84	18000386 (18000_SS)	47	27	-25 %	
46.75	26.27	-26.27	37.15	315.0	46.45	26.04	-23.64	35.18	317.7	1.98	2.65	1.37	1.5	1.45	13.02	18000387 (18000_SS)	47	26	-24 %	
46.75	26.27	-26.27	37.15	315.0	46.54	25.56	-22.52	34.07	318.6	2.14	3.82	1.85	2.08	1.97	18.67	18000388 (18000_SS)	47	25	-24 %	
46.75	26.27	-26.27	37.15	315.0	46.55	27.97	-24.6	37.25	318.6	2.07	2.38	1.53	1.58	1.58	9.05	18000389 (18000_SS)	47	27	-25 %	
46.89	11.46	-13.28	17.54	310.8	46.82	10.08	-15.0	18.07	303.8	2.94	2.21	1.72	2.14	2.0	9.2	18000390 (18000_SS)	47	10	-14 %	
46.89	11.46	-13.28	17.54	310.8	46.77	10.28	-15.24	18.38	303.9	2.85	2.29	1.75	2.17	2.0	10.32	18000391 (18000_SS)	47	10	-14 %	
46.89	11.46	-13.28	17.54	310.8	46.88	10.24	-15.02	18.18	304.2	2.9	2.13	1.65	2.04	1.89	9.13	18000392 (18000_SS)	47	10	-14 %	
46.89	11.46	-13.28	17.54	310.8	46.94	10.24	-14.87	18.05	304.5	2.86	2.01	1.56	1.94	1.8	8.34	18000393 (18000_SS)	47	10	-14 %	
46.89	11.46	-13.28	17.54	310.8	46.89	10.27	-14.9	18.1	304.5	2.77	2.01	1.56	1.94	1.79	8.5	18000394 (18000_SS)	47	10	-14 %	
46.89	11.46	-13.28	17.54	310.8	46.88	12.74	-13.5	18.56	313.3	1.93	1.29	0.85	1.0	1.01	3.02	18000395 (18000_SS)	47	12	-13 %	
46.89	11.46	-13.28	17.54	310.8	46.53	12.85	-13.57	18.69	313.4	1.91	1.47	0.99	1.14	1.15	5.32	18000396 (18000_SS)	47	12	-13 %	
46.89	11.46	-13.28	17.54	310.8	46.8	12.61	-13.15	18.21	313.7	1.78	1.15	0.83	1.0	0.99	2.77	18000397 (18000_SS)	47	12	-13 %	
46.89	11.46	-13.28	17.54	310.8	46.68	12.69	-13.14	18.26	314.0	1.79	1.25	0.91	1.08	1.07	3.6	18000398 (18000_SS)	47	12	-13 %	
46.89	11.46	-13.28	17.54	310.8	47.53	11.31	-13.27	17.43	310.4	1.3	0.65	0.64	0.61	0.63	6.66	18000399 (18000_SS)	47	11	-13 %	

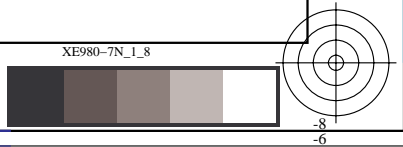
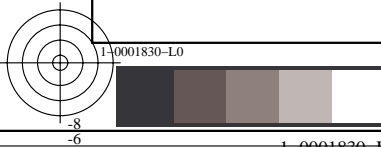
see similar files: http://130.149.60.45/~farbmetrik/XE98/XE98LONA.TXT /PS application for measurement of display or printer output, no separation

TUB registration: 20140801-XE98/XE98LONA.TXT /PS TUB material: code=rh4ta

see similar files: http://130.149.60.45/~farbmetrik/XE98/XE98.HTM  
technical information: http://www.ps.bam.de or http://130.149.60.45/~farbmetrik

TUB registration: 20140801-XE98/XE98LONA.TXT /PS  
application for measurement of display or printer output, no separation  
TUB material: code=rh4ta

%L*0	a*0	b*0	C*ab0	hab0	L*1	a*1	b*1	C*ab1	hab1	DV	dE*ab	dE*94	dE*CM	dE*00	dE*85	NR	Code	L*	a*	b*	
*CIELAB data for all colour (a) of experiment, iimp=446, colour difference pairs SS_0446=BIGC_S_SG %																					
46.89	11.46	-13.28	17.54	310.8	47.62	11.4	-13.39	17.58	310.4	1.21	0.74	0.73	0.7	0.72	7.59	18000400	(18000_SS)	47	11	-13	
46.89	11.46	-13.28	17.54	310.8	47.79	11.24	-13.17	17.32	310.4	1.19	0.93	0.91	0.86	0.89	9.49	18000401	(18000_SS)	47	11	-13	
46.89	11.46	-13.28	17.54	310.8	47.67	11.34	-13.2	17.4	310.6	1.14	0.78	0.77	0.74	0.76	8.15	18000402	(18000_SS)	47	11	-13	
46.89	11.46	-13.28	17.54	310.8	47.83	11.29	-13.1	17.29	310.7	1.23	0.96	0.94	0.89	0.92	9.9	18000403	(18000_SS)	47	11	-13	
46.89	11.46	-13.28	17.54	310.8	47.09	11.3	-13.17	17.35	310.6	0.91	0.07	0.22	0.22	0.23	2.2	18000404	(18000_SS)	47	11	-13	
46.89	11.46	-13.28	17.54	310.8	45.8	12.89	-13.3	18.52	314.1	1.68	1.8	1.47	1.57	1.58	12.08	18000405	(18000_SS)	46	12	-13	
46.89	11.46	-13.28	17.54	310.8	46.36	10.08	-12.83	16.32	308.1	2.31	1.54	1.06	1.23	1.25	6.49	18000406	(18000_SS)	47	10	-13	
46.89	11.46	-13.28	17.54	310.8	47.0	14.37	-11.76	18.57	320.7	3.49	3.28	2.53	3.02	2.83	9.97	18000407	(18000_SS)	47	12	-12	
46.89	11.46	-13.28	17.54	310.8	47.12	14.32	-11.95	18.65	320.1	3.4	3.16	2.42	2.88	2.72	9.49	18000408	(18000_SS)	47	12	-12	
46.89	11.46	-13.28	17.54	310.8	47.29	14.29	-11.68	18.46	320.7	3.42	3.27	2.55	3.03	2.83	11.04	18000409	(18000_SS)	47	12	-12	
46.89	11.46	-13.28	17.54	310.8	47.24	14.35	-11.79	18.57	320.5	3.37	3.26	2.52	3.0	2.82	10.5	18000410	(18000_SS)	47	12	-12	
46.89	11.46	-13.28	17.54	310.8	47.27	14.32	-11.6	18.43	320.9	3.34	3.33	2.6	3.09	2.88	11.29	18000411	(18000_SS)	47	12	-12	
46.89	11.46	-13.28	17.54	310.8	47.23	14.35	-11.65	18.49	320.9	3.3	3.33	2.59	3.08	2.88	10.97	18000412	(18000_SS)	47	12	-12	
46.89	11.46	-13.28	17.54	310.8	46.64	12.84	-11.06	16.95	319.2	2.88	2.62	2.05	2.5	2.17	11.5	18000413	(18000_SS)	47	12	-12	
46.89	11.46	-13.28	17.54	310.8	46.45	12.88	-11.29	17.13	318.7	2.8	2.48	1.97	2.38	2.1	11.01	18000414	(18000_SS)	47	12	-12	
46.89	11.46	-13.28	17.54	310.8	46.66	12.88	-11.23	17.09	318.9	2.78	2.49	1.96	2.39	2.09	10.68	18000415	(18000_SS)	47	12	-12	
46.89	11.46	-13.28	17.54	310.8	46.55	12.91	-11.29	17.16	318.8	2.88	2.48	1.96	2.38	2.1	10.69	18000416	(18000_SS)	47	12	-12	
46.89	11.46	-13.28	17.54	310.8	46.7	13.56	-12.05	18.15	318.3	2.66	2.44	1.9	2.29	2.14	7.8	18000417	(18000_SS)	47	12	-12	
46.89	11.46	-13.28	17.54	310.8	46.72	13.57	-11.98	18.1	318.5	2.7	2.48	1.94	2.34	2.18	8.05	18000418	(18000_SS)	47	12	-12	
46.89	11.46	-13.28	17.54	310.8	46.74	13.58	-12.08	18.18	318.3	2.69	2.43	1.89	2.28	2.14	7.63	18000419	(18000_SS)	47	12	-12	
46.89	11.46	-13.28	17.54	310.8	47.24	11.32	-12.18	16.63	312.8	1.22	1.15	0.78	0.91	0.78	6.8	18000420	(18000_SS)	47	11	-12	
46.89	11.46	-13.28	17.54	310.8	46.83	7.96	-9.6	12.47	309.6	5.14	5.07	2.84	3.53	3.42	19.68	18000421	(18000_SS)	47	9	-11	
37.9	5.51	-31.81	32.29	279.82	37.95	3.54	-28.44	28.66	277.0	1.9	3.9	1.77	2.18	0.99	18.71	18000422	(18000_SS)	38	4	-30	
37.9	5.51	-31.81	32.29	279.82	37.35	10.24	-33.58	35.1	286.9	3.81	5.07	3.09	3.76	2.85	17.04	18000423	(18000_SS)	38	7	-32	
37.9	5.51	-31.81	32.29	279.82	37.82	7.33	-32.91	33.71	282.5	2.42	2.12	1.21	1.49	0.95	7.49	18000424	(18000_SS)	38	6	-32	
37.9	5.51	-31.81	32.29	279.82	37.82	9.45	-34.16	35.45	285.4	3.08	4.59	2.58	3.14	2.02	15.76	18000425	(18000_SS)	38	7	-32	
37.9	5.51	-31.81	32.29	279.82	37.8	7.11	-34.65	35.37	281.5	2.52	3.25	1.44	1.68	0.76	15.74	18000426	(18000_SS)	38	6	-33	
37.9	5.51	-31.81	32.29	279.82	38.32	1.17	-27.32	27.35	272.4	3.69	6.25	3.29	4.12	2.17	27.62	18000427	(18000_SS)	38	3	-29	
37.9	5.51	-31.81	32.29	279.82	37.99	4.42	-31.85	32.15	277.9	2.5	1.09	0.73	0.91	0.86	2.83	18000428	(18000_SS)	38	4	-31	
37.9	5.51	-31.81	32.29	279.82	38.0	2.24	-33.58	33.66	273.8	3.78	3.71	2.39	2.9	3.28	12.02	18000429	(18000_SS)	38	3	-32	
37.9	5.51	-31.81	32.29	279.82	37.84	5.64	-31.92	32.41	280.0	1.54	0.17	0.1	0.12	0.07	1.02	18000430	(18000_SS)	38	5	-31	
37.9	5.51	-31.81	32.29	279.82	37.86	5.46	-32.69	33.15	279.4	1.8	0.88	0.37	0.44	0.48	4.76	18000431	(18000_SS)	38	5	-32	
37.9	5.51	-31.81	32.29	279.82	37.87	3.54	-32.26	32.45	276.2	2.78	2.01	1.35	1.67	1.72	5.32	18000432	(18000_SS)	38	4	-32	
37.9	5.51	-31.81	32.29	279.82	37.63	10.68	-28.6	30.53	290.4	4.9	6.09	4.0	5.04	5.64	20.68	18000433	(18000_SS)	38	8	-30	
37.9	5.51	-31.81	32.29	279.82	38.1	0.68	-33.56	33.56	271.1	4.17	5.13	3.39	4.1	4.44	14.67	18000434	(18000_SS)	38	3	-32	
37.9	5.51	-31.81	32.29	279.82	38.04	8.34	-30.92	32.02	285.1	4.08	2.97	2.0	2.53	2.62	8.63	18000435	(18000_SS)	38	6	-31	
37.9	5.51	-31.81	32.29	279.82	37.86	9.96	-31.24	32.79	287.6	4.22	4.48	3.01	3.76	3.68	10.99	18000436	(18000_SS)	38	7	-31	
37.9	5.51	-31.81	32.29	279.82	37.61	8.31	-31.97	33.03	284.5	3.5	2.81	1.86	2.34	2.1	7.68	18000437	(18000_SS)	38	6	-31	
37.9	5.51	-31.81	32.29	279.82	37.39	12.51	-30.53	33.0	292.2	4.64	7.13	4.8	5.91	5.95	18.46	18000438	(18000_SS)	38	9	-31	
37.9	5.51	-31.81	32.29	279.82	38.07	4.46	-30.88	31.2	278.2	2.72	1.41	0.76	0.93	0.51	6.38	18000439	(18000_SS)	38	4	-31	
37.9	5.51	-31.81	32.29	279.82	38.14	3.86	-29.66	29.91	277.4	2.16	2.72	1.33	1.62	0.74	13.1	18000440	(18000_SS)	38	4	-30	
37.9	5.51	-31.81	32.29	279.82	38.18	4.33	-28.32	28.65	278.7	2.01	3.69	1.56	1.89	1.22	19.86	18000441	(18000_SS)	38	4	-30	
37.9	5.51	-31.81	32.29	279.82	38.48	1.26	-33.72	33.74	272.1	4.16	4.69	3.09	3.72	4.1	14.68	18000442	(18000_SS)	38	3	-32	
37.9	5.51	-31.81	32.29	279.82	38.14	2.46	-28.56	28.66	274.9	3.11	4.46	2.3	2.86	1.44	19.67	18000443	(18000_SS)	38	3	-30	
37.9	5.51	-31.81	32.29	279.82	38.12	5.32	-32.83	33.26	279.2	2.29	1.05	0.51	0.59	0.67	5.3	18000444	(18000_SS)	38	5	-32	
37.9	5.51	-31.81	32.29	279.82	38.01	6.2	-31.34	31.95	281.2	1.97	0.85	0.54	0.68	0.77	3.52	18000445	(18000_SS)	38	5	-31	



%L*0	a*0	b*0	C*ab0	hab0	L*1	a*1	b*1	C*ab1	hab1	DV	dE*ab	dE*94	dE*CM	dE*00	dE*85	NR	Code	L*	a*	b*
%CIELAB data for all colour (a) of experiment, iimp=446, colour difference pairs SS_0446=BIGC_S_SG %																				
Minimum, maximum and average colour difference value																				
STRESS constant F and STRESS value S																				
iai+1 = 446, d_CIELABmina = 0.17, d_CIELABmaxa = 7.97, d_CIELABavea = 3.03																				
iai+1 = 446, CIELAB_Fa = 1.29, CIELAB_STRESSa = 42.17																				
iai+1 = 446, d_CIELCHmina = 0.17, d_CIELCHmaxa = 7.97, d_CIELCHavea = 3.03																				
iai+1 = 446, CIELCHFa = 1.29, CIELCHSTRESSa = 42.17																				
iai+1 = 446, d_C94LCHmina = 0.1, d_C94LCHmaxa = 5.47, d_C94LCHavea = 1.63																				
iai+1 = 446, C94LCHFa = 0.73, C94LCHSTRESSa = 28.73																				
iai+1 = 446, d_CMCLCHmina = 0.12, d_CMCLCHmaxa = 6.74, d_CMCLCHavea = 1.92																				
iai+1 = 446, CMCLCHFa = 0.86, CMCLCHSTRESSa = 31.38																				
iai+1 = 446, d_C00LCHmina = 0.07, d_C00LCHmaxa = 6.51, d_C00LCHavea = 1.67																				
iai+1 = 446, C00LCHFa = 0.76, C00LCHSTRESSa = 29.37																				
iai+1 = 446, d_C85LCHmina = 0.87, d_C85LCHmaxa = 33.72, d_C85LCHavea = 9.84																				
iai+1 = 446, C85LCHFa = 4.26, C85LCHSTRESSa = 45.85																				

see similar files: <http://130.149.60.45/~farbmetrik/XE98/XE98L0NA.TXT> / .PS  
technical information: <http://www.ps.bam.de> or <http://130.149.60.45/~farbmetrik>

TUB registration: 20140801-XE98/XE98L0NA.TXT /.PS TUB material: code=rh4ta  
application for measurement of display or printer output, no separation

