

| %Xn                  | Yn              | Zn      | X0             | Y0       | Z0      | X1         | Y1      | Z1                       | DV*ab    | ds*ab  | dE*ab      | dE*abrdE*DVRdE*abmdE*DVM | NR              | L*0   | a*0   | b*0      | C*0 | h0  | L*1 | a*1  | b*1  | C*1  | h1    | CODE  | %       |
|----------------------|-----------------|---------|----------------|----------|---------|------------|---------|--------------------------|----------|--------|------------|--------------------------|-----------------|-------|-------|----------|-----|-----|-----|------|------|------|-------|-------|---------|
| %1000*(CIE XYZ & DV) | for all colours | (a)     | of experiment, | iimp=96, | colour  | difference | pairs   | VA_EC114=VIK_ADJACENT_EC | iimp=96, | colour | difference | pairs                    | , ioutn/s/3/4=0 | 1     | 0     | 0        | %   |     |     |      |      |      |       |       | %       |
| 0095050              | 0100000         | 0108900 | 0043074        | 0051427  | 0077399 | 0081895    | 0087159 | 0084892                  | 0029182  | 06739  | 03422      | 0.507                    | 0.433           | 0.492 | 0.567 | 51000001 | 77  | -16 | 0.0 | W-CW | CW-C | 1:25 | 0.434 | 0.046 | (CW_W)% |
| 0095050              | 0100000         | 0108900 | 0043074        | 0051427  | 0077399 | 0019343    | 0027473 | 0069838                  | 0038214  | 06739  | 03316      | 0.492                    | 0.537           | 0.507 | 0.432 | 51000002 | 77  | -16 | 0.0 | W-CW | CW-C | 1:25 | 0.434 | 0.046 | (CW-C)% |
| 0095050              | 0100000         | 0108900 | 0030852        | 0028282  | 0046115 | 0081865    | 0087136 | 0084766                  | 0040990  | 09068  | 04660      | 0.513                    | 0.452           | 0.486 | 0.548 | 51000003 | 60  | 15  | 0.0 | W-VW | VW-V | 1:25 | 0.452 | 0.075 | (VW-W)% |
| 0095050              | 0100000         | 0108900 | 0030852        | 0028282  | 0046115 | 0007801    | 0005152 | 0022368                  | 0049695  | 09068  | 04407      | 0.486                    | 0.548           | 0.513 | 0.452 | 51000004 | 60  | 15  | 0.0 | W-VW | VW-V | 1:25 | 0.452 | 0.075 | (VW-V)% |
| 0095050              | 0100000         | 0108900 | 0053920        | 0042704  | 0046585 | 0081957    | 0087176 | 0085290                  | 0038815  | 09047  | 04611      | 0.509                    | 0.429           | 0.49  | 0.571 | 51000005 | 71  | 37  | 0.0 | W-MW | MW-M | 1:25 | 0.430 | 0.066 | (MW-W)% |
| 0095050              | 0100000         | 0108900 | 0053920        | 0042704  | 0046585 | 0033139    | 0017030 | 0021987                  | 0051662  | 09047  | 04436      | 0.49                     | 0.571           | 0.509 | 0.429 | 51000006 | 71  | 37  | 0.0 | W-MW | MW-M | 1:25 | 0.430 | 0.066 | (MW-M)% |
| 0095050              | 0100000         | 0108900 | 0052074        | 0043502  | 0024322 | 0082025    | 0087214 | 0085669                  | 0040358  | 09385  | 04593      | 0.489                    | 0.43            | 0.51  | 0.57  | 51000007 | 72  | 30  | 0.0 | W-OW | OW-O | 1:25 | 0.431 | 0.082 | (OW_W)% |
| 0095050              | 0100000         | 0108900 | 0052074        | 0043502  | 0024322 | 0030662    | 0017102 | 0002671                  | 0053498  | 09385  | 04792      | 0.51                     | 0.57            | 0.489 | 0.43  | 51000008 | 72  | 30  | 0.0 | W-OW | OW-O | 1:25 | 0.431 | 0.082 | (OW-O)% |
| 0095050              | 0100000         | 0108900 | 0071925        | 0080693  | 0032042 | 0082017    | 0087277 | 0085077                  | 0044756  | 09462  | 04702      | 0.496                    | 0.473           | 0.503 | 0.527 | 51000009 | 92  | -9  | 0.0 | W-VW | VW-V | 1:25 | 0.474 | 0.109 | (YV_W)% |
| 0095050              | 0100000         | 0108900 | 0071925        | 0080693  | 0032042 | 0066664    | 0073806 | 0060695                  | 0049865  | 09462  | 04760      | 0.503                    | 0.527           | 0.496 | 0.473 | 51000010 | 92  | -9  | 0.0 | W-VW | VW-V | 1:25 | 0.474 | 0.109 | (YV_Y)% |
| 0095050              | 0100000         | 0108900 | 0032292        | 0044663  | 0029339 | 0081978    | 0087247 | 0084968                  | 0039004  | 08125  | 04197      | 0.516                    | 0.48            | 0.483 | 0.52  | 51000011 | 73  | -33 | 0.0 | W-LW | LW-L | 1:25 | 0.480 | 0.072 | (LW-W)% |
| 0095050              | 0100000         | 0108900 | 0032292        | 0044663  | 0029339 | 0009712    | 0020830 | 0006418                  | 0042254  | 08125  | 03928      | 0.483                    | 0.52            | 0.516 | 0.48  | 51000012 | 73  | -33 | 0.0 | W-LW | LW-L | 1:25 | 0.480 | 0.072 | (LW-L)% |
| 0095050              | 0100000         | 0108900 | 0008527        | 0010959  | 0021142 | 0019770    | 0027965 | 0070590                  | 0036297  | 06696  | 03376      | 0.504                    | 0.542           | 0.495 | 0.458 | 51000013 | 40  | -15 | 0.0 | C-CN | CN-N | 1:25 | 0.543 | 0.082 | (CN-C)% |
| 0095050              | 0100000         | 0108900 | 0008527        | 0010959  | 0021142 | 0002980    | 0030399 | 0003081                  | 0030672  | 06696  | 03320      | 0.495                    | 0.458           | 0.504 | 0.542 | 51000014 | 40  | -15 | 0.0 | C-CN | CN-N | 1:25 | 0.543 | 0.082 | (CN-N)% |
| 0095050              | 0100000         | 0108900 | 0005284        | 0004233  | 0010255 | 0008218    | 0005476 | 0023253                  | 0033098  | 05498  | 02691      | 0.489                    | 0.602           | 0.51  | 0.398 | 51000015 | 24  | 16  | 0.0 | V-VN | VN-N | 1:25 | 0.602 | 0.098 | (VN-V)% |
| 0095050              | 0100000         | 0108900 | 0005284        | 0004233  | 0010255 | 0003089    | 0003186 | 0003175                  | 0021882  | 05498  | 02806      | 0.51                     | 0.398           | 0.489 | 0.602 | 51000016 | 24  | 16  | 0.0 | V-VN | VN-N | 1:25 | 0.602 | 0.098 | (VN-N)% |
| 0095050              | 0100000         | 0108900 | 0012276        | 0008036  | 0009325 | 0032537    | 0016547 | 0021197                  | 0041149  | 07990  | 04086      | 0.511                    | 0.515           | 0.488 | 0.485 | 51000017 | 34  | 36  | 0.0 | M-MN | MN-N | 1:25 | 0.515 | 0.080 | (MN-M)% |
| 0095050              | 0100000         | 0108900 | 0012276        | 0008036  | 0009325 | 0002842    | 0002946 | 0002963                  | 0038752  | 07990  | 03903      | 0.488                    | 0.485           | 0.511 | 0.515 | 51000018 | 34  | 36  | 0.0 | M-MN | MN-N | 1:25 | 0.515 | 0.080 | (MN-N)% |
| 0095050              | 0100000         | 0108900 | 0011579        | 0007961  | 0002636 | 0030314    | 0016860 | 0002493                  | 0045486  | 08747  | 04376      | 0.5                      | 0.52            | 0.499 | 0.48  | 51000019 | 34  | 32  | 0.0 | O-ON | ON-N | 1:25 | 0.520 | 0.071 | (ON-O)% |
| 0095050              | 0100000         | 0108900 | 0011579        | 0007961  | 0002636 | 0002902    | 0003013 | 0002999                  | 0041987  | 08747  | 04370      | 0.499                    | 0.48            | 0.5   | 0.52  | 51000020 | 34  | 32  | 0.0 | O-ON | ON-N | 1:25 | 0.520 | 0.071 | (ON-N)% |
| 0095050              | 0100000         | 0108900 | 0020099        | 0022165  | 0004769 | 0066798    | 0074098 | 0007444                  | 0058048  | 11919  | 05989      | 0.502                    | 0.487           | 0.497 | 0.513 | 51000021 | 54  | -4  | 0.0 | Y-YN | YN-N | 1:25 | 0.487 | 0.088 | (YN-Y)% |
| 0095050              | 0100000         | 0108900 | 0020099        | 0022165  | 0004769 | 0003033    | 0003118 | 0003076                  | 0061147  | 11919  | 05930      | 0.497                    | 0.513           | 0.502 | 0.487 | 51000022 | 54  | -4  | 0.0 | Y-YN | YN-N | 1:25 | 0.487 | 0.088 | (YN-N)% |
| 0095050              | 0100000         | 0108900 | 0005367        | 0008949  | 0004486 | 0010243    | 0021552 | 0006753                  | 0041573  | 08103  | 04034      | 0.497                    | 0.513           | 0.502 | 0.487 | 51000023 | 36  | -31 | 0.0 | L-LN | LN-N | 1:25 | 0.514 | 0.083 | (LN-L)% |
| 0095050              | 0100000         | 0108900 | 0005367        | 0008949  | 0004486 | 0003141    | 0003224 | 0003188                  | 0039466  | 08103  | 04069      | 0.502                    | 0.487           | 0.497 | 0.513 | 51000024 | 36  | -31 | 0.0 | L-LN | LN-N | 1:25 | 0.514 | 0.083 | (LN-N)% |
| 0095050              | 0100000         | 0108900 | 0018978        | 0027010  | 0069411 | 0081903    | 0087166 | 0084901                  | 0060898  | 13502  | 06791      | 0.502                    | 0.451           | 0.497 | 0.549 | 51000025 | 59  | -30 | 0.0 | W-C  | C-N  | 1:27 | 0.451 | 0.?   | (C-W)%  |
| 0095050              | 0100000         | 0108900 | 0018978        | 0027010  | 0069411 | 0002714    | 0002829 | 0002886                  | 0074130  | 13502  | 06711      | 0.497                    | 0.549           | 0.502 | 0.45  | 51000026 | 59  | -30 | 0.0 | W-C  | C-N  | 1:27 | 0.451 | 0.?   | (C-N)%  |
| 0095050              | 0100000         | 0108900 | 0007467        | 0004897  | 0021984 | 0081875    | 0087121 | 0084914                  | 0091267  | 14673  | 09144      | 0.623                    | 0.622           | 0.376 | 0.378 | 51000027 | 26  | 31  | 0.0 | W-V  | V-N  | 1:27 | 0.622 | 0.?   | (V-W)%  |
| 0095050              | 0100000         | 0108900 | 0007467        | 0004897  | 0021984 | 0002736    | 0002851 | 0002907                  | 0055464  | 14673  | 05528      | 0.376                    | 0.378           | 0.623 | 0.622 | 51000028 | 26  | 31  | 0.0 | W-V  | V-N  | 1:27 | 0.622 | 0.?   | (V-N)%  |
| 0095050              | 0100000         | 0108900 | 0032650        | 0016676  | 0021392 | 0081940    | 0087190 | 0085037                  | 0078028  | 17074  | 09090      | 0.532                    | 0.457           | 0.467 | 0.543 | 51000029 | 48  | 74  | 0.0 | W-M  | M-N  | 1:27 | 0.457 | 0.?   | (M-W)%  |
| 0095050              | 0100000         | 0108900 | 0032650        | 0016676  | 0021392 | 0002832    | 0002949 | 0003016                  | 0092712  | 17074  | 07983      | 0.467                    | 0.543           | 0.532 | 0.457 | 51000030 | 48  | 74  | 0.0 | W-M  | M-N  | 1:27 | 0.457 | 0.?   | (W-N)%  |
| 0095050              | 0100000         | 0108900 | 0030215        | 0016816  | 0002562 | 0081966    | 0087204 | 0085258                  | 0084211  | 18148  | 09392      | 0.517                    | 0.464           | 0.482 | 0.536 | 51000031 | 48  | 65  | 0.0 | W-O  | O-N  | 1:27 | 0.464 | 0.?   | (O-W)%  |
| 0095050              | 0100000         | 0108900 | 0030215        | 0016816  | 0002562 | 0002849    | 0002958 | 0003070                  | 0097278  | 18148  | 08756      | 0.482                    | 0.536           | 0.517 | 0.464 | 51000032 | 48  | 65  | 0.0 | W-O  | O-N  | 1:27 | 0.464 | 0.?   | (O-N)%  |
| 0095050              | 0100000         | 0108900 | 0066737        | 0073834  | 0007177 | 0082007    | 0087317 | 0084700                  | 0074105  | 21417  | 09307      | 0.434                    | 0.346           | 0.565 | 0.654 | 51000033 | 89  | -7  | 0.0 | W-Y  | Y-N  | 1:27 | 0.347 | 0.?   | (Y-W)%  |
| 0095050              | 0100000         | 0108900 | 0066737        | 0073834  | 0007177 | 0002672    | 0002786 | 0002857                  | 0140071  | 21417  | 12109      | 0.565                    | 0.654           | 0.434 | 0.345 | 51000034 | 89  | -7  | 0.0 | W-Y  | Y-N  | 1:27 | 0.347 | 0.?   | (Y-N)%  |
| 0095050              | 0100000         | 0108900 | 0009334        | 0020322  | 0006403 | 0081861    | 0087155 | 0084581                  | 0081261  | 16284  | 08149      | 0.5                      | 0.499           | 0.499 | 0.501 | 51000035 | 52  | -63 | 0.0 | W-L  | L-N  | 1:27 | 0.499 | 0.?   | (L-W)%  |
| 0095050              | 0100000         | 0108900 | 0009334        | 0020322  | 0006403 | 0002711    | 0002826 | 0002883                  | 0081587  | 16284  | 08135      | 0.499                    | 0.501           | 0.5   | 0.499 | 51000036 | 52  | -63 | 0.0 | W-L  | L-N  | 1:27 | 0.499 | 0.?   | (L-N)%  |
| 0095050              | 0100000         | 0108900 | 0007648        | 0005037  | 0022249 | 0019131    | 0027146 | 0069686                  | 0066461  | 13134  | 06979      | 0.531                    | 0.505           | 0.468 | 0.494 | 51000037 | 27  | 31  | 0.0 | C-V  | V-M  | 1:27 | 0.499 | 0.?   | (V-C)%  |
| 0095050              | 0100000         | 0108900 | 0007648        | 0005037  | 0022249 | 0032775    | 0016792 | 00021389                 | 0064885  | 13134  | 06154      | 0.468                    | 0.494           | 0.531 | 0.505 | 51000038 | 27  | 31  | 0.0 | C-V  | V-M  | 1:27 | 0.499 | 0.?   | (V-M)%  |
| 0095050              | 0100000         | 0108900 | 0030190        | 0016793  | 0002540 | 0032749    | 0016740 | 0021479                  | 0058258  | 15535  | 06010      | 0.386                    | 0.375           | 0.613 | 0.625 | 51000039 | 48  | 65  | 0.0 | M-O  | O-Y  | 1:27 | 0.375 | 0.?   | (O-M)%  |
| 0095050              | 0100000         | 0108900 | 0030190        | 0016793  | 0002540 | 0066638    | 0073825 | 0007508                  | 0097096  | 15535  | 09524      | 0.613                    | 0.625           |       |       |          |     |     |     |      |      |      |       |       |         |

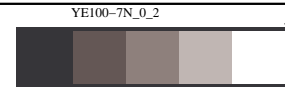
TUB registration: 20140801- YE10/YE10LONP.PDF /.PS  
 application for measurement of display or printer output, no separation  
 TUB material: code=rh4ta

| %Xn   | Yn      | Zn      | X0      | Y0      | Z0      | X1      | Y1      | Z1      | DV*ab   | dS*ab | dE*ab | dE*abrdE | DVrdE | *abmdE | DVm   | NR       | L*0 | a*0 | b*0  | C*0  | h0   | L*1  | a*1   | b*1   | C*1     | h1 | CODE | % |
|---|---------|---------|---------|---------|---------|---------|---------|---------|---------|-------|-------|----------|-------|--------|-------|----------|-----|-----|------|------|------|------|-------|-------|---------|----|------|---|
| *%1000*(CIEXYZ & DV) for all colours (a) of experiment, iimp=96, colour difference pairs VA_EC114=VIK_ADJACENT_ECiimp=96, colour difference pairs , ioutn/s/3/4=0 1 0 0 % |         |         |         |         |         |         |         |         |         |       |       |          |       |        |       |          |     |     |      |      |      |      |       |       |         |    |      |   |
| 0095050   | 0100000 | 0108900 | 0053773 | 0053723 | 0066406 | 0081677 | 0086843 | 0085230 | 0010955 | 04642 | 02295 | 0.494    | 0.236 | 0.505  | 0.764 | 51000051 | 497 | 420 | 0.69 | W-WC | WC-C | 2:26 | 0.428 | 0.048 | (CW-Cw) | %  |      |   |
| 0095050   | 0100000 | 0108900 | 0053773 | 0053723 | 0066406 | 0031007 | 0028449 | 0046980 | 0035466 | 04642 | 02346 | 0.505    | 0.764 | 0.494  | 0.236 | 51000052 | 497 | 420 | 0.69 | W-WC | WC-C | 2:26 | 0.428 | 0.048 | (CW-C)  | %  |      |   |
| 0095050   | 0100000 | 0108900 | 0068553 | 0064010 | 0066228 | 0082016 | 0087216 | 0085531 | 0010645 | 04608 | 02234 | 0.484    | 0.231 | 0.515  | 0.769 | 51000053 | 492 | 416 | 0.69 | W-Cw | Cw-C | 3:26 | 0.643 | 0.064 | (W-Wv)  | %  |      |   |
| 0095050   | 0100000 | 0108900 | 0068553 | 0064010 | 0066228 | 0054225 | 0042964 | 0047363 | 0035437 | 04608 | 02373 | 0.515    | 0.769 | 0.484  | 0.231 | 51000054 | 492 | 416 | 0.69 | W-Cw | Cw-C | 3:26 | 0.643 | 0.064 | (Wv-VW) | %  |      |   |
| 0095050   | 0100000 | 0108900 | 0064913 | 0061743 | 0048224 | 0081898 | 0087155 | 0084581 | 0010428 | 04676 | 02294 | 0.49     | 0.223 | 0.509  | 0.777 | 51000055 | 493 | 412 | 0.67 | W-Wv | Wv-V | 1:26 | 0.236 | 0.047 | (VW-Vw) | %  |      |   |
| 0095050   | 0100000 | 0108900 | 0064913 | 0061743 | 0048224 | 0051433 | 0042502 | 0023458 | 0036337 | 04676 | 02382 | 0.509    | 0.777 | 0.49   | 0.222 | 51000056 | 493 | 412 | 0.67 | W-Wv | Wv-V | 1:26 | 0.236 | 0.047 | (Vw-V)  | %  |      |   |
| 0095050   | 0100000 | 0108900 | 0075935 | 0083223 | 0055281 | 0081998 | 0087239 | 0085073 | 0008028 | 04587 | 02221 | 0.484    | 0.175 | 0.515  | 0.825 | 51000057 | 358 | 476 | 0.73 | W-WV | WV-V | 2:26 | 0.474 | 0.057 | (W-Wm)  | %  |      |   |
| 0095050   | 0100000 | 0108900 | 0075935 | 0083223 | 0055281 | 0072081 | 0080771 | 0032956 | 0037848 | 04587 | 02365 | 0.515    | 0.825 | 0.484  | 0.175 | 51000058 | 358 | 476 | 0.73 | W-WV | WV-V | 2:26 | 0.474 | 0.057 | (Wm-MW) | %  |      |   |
| 0095050   | 0100000 | 0108900 | 0054957 | 0065264 | 0054935 | 0081892 | 0087084 | 0085314 | 0009560 | 04120 | 02001 | 0.485    | 0.232 | 0.514  | 0.768 | 51000059 | 492 | 429 | 0.69 | W-Vw | Vw-V | 3:26 | 0.697 | 0.053 | (MW-Mw) | %  |      |   |
| 0095050   | 0100000 | 0108900 | 0054957 | 0065264 | 0054935 | 0032602 | 0025422 | 0030627 | 0031649 | 04120 | 02119 | 0.514    | 0.768 | 0.485  | 0.232 | 51000060 | 492 | 429 | 0.69 | W-Vw | Vw-V | 3:26 | 0.697 | 0.053 | (Ww-V)  | %  |      |   |
| 0095050   | 0100000 | 0108900 | 0030129 | 0038759 | 0074364 | 0042846 | 0051178 | 0077724 | 0008881 | 03313 | 01582 | 0.477    | 0.268 | 0.522  | 0.732 | 51000061 | 533 | 493 | 0.74 | W-Wm | Wm-M | 1:26 | 0.231 | 0.042 | (W-Wo)  | %  |      |   |
| 0095050   | 0100000 | 0108900 | 0030129 | 0038759 | 0074364 | 0019117 | 0027166 | 0069759 | 0024257 | 03313 | 01731 | 0.522    | 0.732 | 0.477  | 0.268 | 51000062 | 533 | 493 | 0.74 | W-Wm | Wm-M | 1:26 | 0.231 | 0.042 | (Wo-OW) | %  |      |   |
| 0095050   | 0100000 | 0108900 | 0017140 | 0013979 | 0033873 | 0031007 | 0028449 | 0046980 | 0011788 | 04415 | 02153 | 0.487    | 0.267 | 0.512  | 0.733 | 51000063 | 503 | 565 | 0.79 | W-WM | WM-M | 2:26 | 0.469 | 0.049 | (OW-Ow) | %  |      |   |
| 0095050   | 0100000 | 0108900 | 0017140 | 0013979 | 0033873 | 0007724 | 0005099 | 0022445 | 0032637 | 04415 | 02261 | 0.512    | 0.733 | 0.487  | 0.266 | 51000064 | 503 | 565 | 0.79 | W-WM | WM-M | 2:26 | 0.469 | 0.049 | (Ow-W)  | %  |      |   |
| 0095050   | 0100000 | 0108900 | 0043132 | 0028245 | 0033517 | 0054225 | 0042964 | 0047363 | 0011978 | 04469 | 02219 | 0.496    | 0.268 | 0.503  | 0.732 | 51000065 | 535 | 445 | 0.72 | W-Mw | Mw-M | 3:26 | 0.690 | 0.066 | (W-Wy)  | %  |      |   |
| 0095050   | 0100000 | 0108900 | 0043132 | 0028245 | 0033517 | 0032941 | 0016859 | 0021835 | 0032718 | 04469 | 02250 | 0.503    | 0.732 | 0.496  | 0.268 | 51000066 | 535 | 445 | 0.72 | W-Mw | Mw-M | 3:26 | 0.690 | 0.066 | (Wy-YW) | %  |      |   |
| 0095050   | 0100000 | 0108900 | 0039728 | 0027280 | 0009052 | 0051433 | 0042502 | 0023758 | 0012476 | 04761 | 02497 | 0.524    | 0.262 | 0.475  | 0.738 | 51000067 | 534 | 449 | 0.71 | W-Wo | Wo-O | 1:26 | 0.224 | 0.049 | (YW-Yw) | %  |      |   |
| 0095050   | 0100000 | 0108900 | 0039728 | 0027280 | 0009052 | 0030153 | 0016716 | 0020439 | 0035143 | 04761 | 02264 | 0.475    | 0.738 | 0.524  | 0.261 | 51000068 | 534 | 449 | 0.71 | W-Wo | Wo-O | 1:26 | 0.224 | 0.049 | (Yw-W)  | %  |      |   |
| 0095050   | 0100000 | 0108900 | 0069109 | 0077892 | 0016272 | 0072081 | 0080771 | 0032956 | 0011635 | 04691 | 02594 | 0.552    | 0.248 | 0.447  | 0.752 | 51000069 | 504 | 419 | 0.7  | W-WO | WO-O | 2:26 | 0.453 | 0.049 | (W-W1)  | %  |      |   |
| 0095050   | 0100000 | 0108900 | 0069109 | 0077892 | 0016272 | 0066785 | 0074005 | 0007581 | 0035282 | 04691 | 02097 | 0.447    | 0.752 | 0.552  | 0.248 | 51000070 | 504 | 419 | 0.7  | W-WO | WO-O | 2:26 | 0.453 | 0.049 | (W1-LW) | %  |      |   |
| 0095050   | 0100000 | 0108900 | 0019612 | 0032347 | 0016223 | 0032602 | 0044922 | 0030627 | 0010312 | 03997 | 01969 | 0.492    | 0.258 | 0.507  | 0.742 | 51000071 | 515 | 443 | 0.72 | W-Ow | Ow-O | 3:26 | 0.679 | 0.070 | (LW-Lw) | %  |      |   |
| 0095050   | 0100000 | 0108900 | 0019612 | 0032347 | 0016223 | 0009866 | 0021113 | 0006738 | 0029658 | 03997 | 02027 | 0.507    | 0.742 | 0.492  | 0.258 | 51000072 | 515 | 443 | 0.72 | W-Ow | Ow-O | 3:26 | 0.679 | 0.070 | (Lw-L)  | %  |      |   |
| 0095050   | 0100000 | 0108900 | 0012815 | 0017460 | 0040601 | 0019274 | 0027357 | 0069614 | 0015543 | 03364 | 01660 | 0.493    | 0.462 | 0.506  | 0.538 | 51000073 | 49  | -23 | 0.0  | W-Wy | Wy-Y | 1:26 | 0.176 | 0.043 | (C-Cn)  | %  |      |   |
| 0095050   | 0100000 | 0108900 | 0012815 | 0017460 | 0040601 | 0008051 | 0010396 | 0020660 | 0018100 | 03364 | 01703 | 0.506    | 0.538 | 0.493  | 0.462 | 51000074 | 49  | -23 | 0.0  | W-Wy | Wy-Y | 1:26 | 0.176 | 0.043 | (Cn-CN) | %  |      |   |
| 0095050   | 0100000 | 0108900 | 0006167 | 0004418 | 0015597 | 0007633 | 0005004 | 0022145 | 0014728 | 02658 | 01249 | 0.469    | 0.554 | 0.53   | 0.445 | 51000075 | 25  | 24  | 0.0  | W-WY | WY-Y | 2:26 | 0.489 | 0.053 | (CN-Nc) | %  |      |   |
| 0095050   | 0100000 | 0108900 | 0006167 | 0004418 | 0015597 | 0004846 | 0003858 | 0009872 | 0011857 | 02658 | 01409 | 0.53     | 0.445 | 0.469  | 0.554 | 51000076 | 25  | 24  | 0.0  | W-WY | WY-Y | 2:26 | 0.489 | 0.053 | (Nc-N)  | %  |      |   |
| 0095050   | 0100000 | 0108900 | 0020068 | 0011211 | 0014294 | 0032800 | 0016758 | 0021462 | 0022949 | 04061 | 02010 | 0.494    | 0.565 | 0.505  | 0.435 | 51000077 | 40  | 56  | 0.0  | W-Yw | Yw-Y | 3:26 | 0.732 | 0.086 | (V-Vn)  | %  |      |   |
| 0095050   | 0100000 | 0108900 | 0020068 | 0011211 | 0014294 | 0012454 | 0008161 | 0009708 | 0017669 | 04061 | 02051 | 0.505    | 0.435 | 0.494  | 0.565 | 51000078 | 40  | 56  | 0.0  | W-Yw | Yw-Y | 3:26 | 0.732 | 0.086 | (Vn-VN) | %  |      |   |
| 0095050   | 0100000 | 0108900 | 0018784 | 0011347 | 0002510 | 0030131 | 0016704 | 0002461 | 0020472 | 04450 | 02270 | 0.51     | 0.46  | 0.489  | 0.539 | 51000079 | 40  | 49  | 0.0  | W-WL | WL-L | 1:26 | 0.232 | 0.062 | (VN-Nv) | %  |      |   |
| 0095050   | 0100000 | 0108900 | 0018784 | 0011347 | 0002510 | 0011283 | 0007750 | 0002628 | 0024033 | 04450 | 02180 | 0.489    | 0.539 | 0.51   | 0.46  | 51000080 | 40  | 49  | 0.0  | W-WL | WL-L | 1:26 | 0.232 | 0.062 | (Nv-N)  | %  |      |   |
| 0095050   | 0100000 | 0108900 | 0039436 | 0044284 | 0006442 | 0066658 | 0073857 | 0007567 | 0026431 | 06034 | 02912 | 0.482    | 0.438 | 0.517  | 0.562 | 51000081 | 72  | -8  | 0.0  | W-WL | WL-L | 2:26 | 0.471 | 0.061 | (M-Mn)  | %  |      |   |
| 0095050   | 0100000 | 0108900 | 0039436 | 0044284 | 0006442 | 0019741 | 0021839 | 0004835 | 0033914 | 06034 | 03121 | 0.517    | 0.562 | 0.482  | 0.437 | 51000082 | 72  | -8  | 0.0  | W-WL | WL-L | 2:26 | 0.471 | 0.061 | (Mn-MN) | %  |      |   |
| 0095050   | 0100000 | 0108900 | 0007159 | 0013858 | 0005360 | 0009802 | 0021038 | 0006738 | 0021546 | 04104 | 02020 | 0.492    | 0.525 | 0.507  | 0.475 | 51000083 | 44  | -47 | 0.0  | W-Lw | Lw-L | 3:26 | 0.699 | 0.070 | (MN-Nm) | %  |      |   |
| 0095050   | 0100000 | 0108900 | 0007159 | 0013858 | 0005360 | 0005090 | 0008604 | 0004498 | 0019494 | 04104 | 02083 | 0.507    | 0.475 | 0.492  | 0.525 | 51000084 | 44  | -47 | 0.0  | W-Lw | Lw-L | 3:26 | 0.699 | 0.070 | (Nm-N)  | %  |      |   |
| 0095050   | 0100000 | 0108900 | 0004691 | 0005674 | 0008904 | 0008051 | 0010396 | 0020660 | 0015904 | 03334 | 01627 | 0.487    | 0.477 | 0.512  | 0.523 | 51000085 | 29  | -8  | 0.0  | C-Cn | Cn-N | 1:26 | 0.268 | 0.055 | (O-On)  | %  |      |   |
| 0095050   | 0100000 | 0108900 | 0004691 | 0005674 | 0008904 | 0002732 | 0002842 | 0002934 | 0017437 | 03334 | 01707 | 0.512    | 0.523 | 0.487  | 0.477 | 51000086 | 29  | -8  | 0.0  | C-Cn | Cn-N | 1:26 | 0.268 | 0.055 | (On-ON) | %  |      |   |
| 0095050   | 0100000 | 0108900 | 0003743 | 0003394 | 0005660 | 0004846 | 0003858 | 0009872 | 0006567 | 02855 | 01493 | 0.523    | 0.23  | 0.476  | 0.77  | 51000087 | 476 | 444 | 0.71 | C-CN | CN-N | 2:26 | 0.502 | 0.062 | (ON-No) | %  |      |   |
| 0095050   | 0100000 | 0108900 | 0003743 | 0003394 | 0005660 | 0002828 | 0002931 | 0002979 | 0021987 | 02855 | 01361 | 0.476    | 0.77  | 0.523  | 0.23  | 51000088 | 476 | 444 | 0.71 | C-CN | CN-N | 2:26 | 0.502 | 0.062 | (No-Yn) | %  |      |   |
| 0095050   | 0100000 | 0108900 | 0006621 | 0005133 | 0005569 | 0012454 | 0008161 | 0009708 | 0000000 | 03907 | 01880 | 0.481    | 0.0   | 0.518  | 1.0   | 51000089 | 27  | 19  | 0.0  | C-Nc | Nc-N | 3:26 | 0.749 | 0.056 | (Y-N)   | %  |      |   |
| 0095050   | 0100000 | 0108900 | 0006621 | 0005133 | 0005569 | 0002956 | 0003059 | 0003075 | 0039073 | 03907 | 02026 | 0.518    | 1.0   | 0.481  | 0.0   | 51000090 | 27  | 19  | 0.0  | C-Nc | Nc-N | 3:26 | 0.749 | 0.056 | (Yn-YN) | %  |      |   |
| 0095050   | 0100000 | 0108900 | 0006222 | 0004944 | 0002707 | 0011283 | 0007750 | 0002628 | 0000000 | 04384 | 02033 | 0.463    | 0.0   | 0.536  | 1.0   | 51000091 | 27  | 17  | 0.0  | V-Vn | Vn-N | 1:26 | 0.268 | 0.070 | (YN-Ny) | %  |      |   |
| 0095050   | 0100000 | 0108900 | 0006222 | 0004944 | 0002707 | 0002745 | 0002868 | 0002951 | 0043842 | 04384 | 02351 | 0.536    | 1.0   | 0.463  | 0.0   | 51000092 | 27  | 17  | 0.0  | V-Vn | Vn-N | 1:26 | 0.268 | 0.070 | (Ny-N)  | %  |      |   |
| 0095050   | 0100000 | 0108900 | 0008996 | 0009737 | 0003907 |         |         |         |         |       |       |          |       |        |       |          |     |     |      |      |      |      |       |       |         |    |      |   |

```
%Xn  Yn  Zn  X0  Y0  Z0  X1  Y1  Z1  DV*ab  dS*ab  dE*ab  dE*abrdE*DvrdeE*abmdE*Dvm NR  L*0 a*0 b*0 C*0 h0  L*1 a*1 b*1 C*1 h1  CODE %  
%1000*(CIEXYZ & DV) for all colours (a) of experiment, iimp=96, colour difference pairs VA_EC114=VIK_ADJACENT_ECiimp=96, colour difference pairs , ioutn/s/3/4=0 1 0 0 %  
Minimum, maximum and average colour difference value  
STRESS constant F and STRESS value S  
iai+1 = 96, d_CIELABmina = 12.49, d_CIELABmaxa = 121.09, d_CIELABavea = 41.21  
iai+1 = 96, CIELAB_Fa = 0.95, CIELAB_STRESSa = 20.2  
  
iai+1 = 96, d_CIELCHmina = 12.49, d_CIELCHmaxa = 121.11, d_CIELCHavea = 41.22  
iai+1 = 96, CIELCHFa = 0.95, CIELCHSTRESSa = 20.2  
  
iai+1 = 96, d_C94LCHmina = 4.64, d_C94LCHmaxa = 72.88, d_C94LCHavea = 23.37  
iai+1 = 96, C94LCHFa = 0.53, C94LCHSTRESSa = 29.34  
  
iai+1 = 96, d_CMCLCHmina = 5.46, d_CMCLCHmaxa = 72.5, d_CMCLCHavea = 25.29  
iai+1 = 96, CMCLCHFa = 0.57, CMCLCHSTRESSa = 27.55  
  
iai+1 = 96, d_C00LCHmina = 4.1, d_C00LCHmaxa = 73.48, d_C00LCHavea = 22.67  
iai+1 = 96, C00LCHFa = 0.51, C00LCHSTRESSa = 27.56  
  
iai+1 = 96, d_C85LCHmina = 18.94, d_C85LCHmaxa = 583.86, d_C85LCHavea = 180.28  
iai+1 = 96, C85LCHFa = 4.04, C85LCHSTRESSa = 32.25
```

see similar files: <http://130.149.60.45/~farbmetrik/YE10/YE10L0NP.PDF> / .PS  
technical information: <http://www.ps.bam.de> or <http://130.149.60.45/~farbmetrik>

TUB registration: 20140801-YE10/YE10L0NP.PDF /.PS TUB material: code=rh4ta  
application for measurement of display or printer output, no separation



see similar files: http://130.149.60.45/~farbmetrik/YE10/YE10L0NP.PDF /PS  
technical information: http://www.ps.bam.de or http://130.149.60.45/~farbmetrik

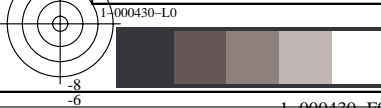
Table with columns: %L\*0, a\*0, b\*0, C\*ab0, hab0, L\*1, a\*1, b\*1, C\*ab1, hab1, DV, dE\*ab, dE\*94, dE\*CM, dE\*00, dE\*85, NR, L\*0, a\*0, b\*0, C\*0, h0, L\*1, a\*1, b\*1, C\*1, h1, CODE %

TUB registration: 20140801-YE10/YE10L0NP.PDF /PS  
application for measurement of display or printer output, no separation  
TUB material: code=rh4ta

see similar files: http://130.149.60.45/~farbmetrik/YE10/YE10.HTM  
technical information: http://www.ps.bam.de or http://130.149.60.45/~farbmetrik

Table with columns: %L\*0, a\*0, b\*0, C\*ab0, hab0, L\*1, a\*1, b\*1, C\*ab1, hab1, DV, dE\*ab, dE\*94, dE\*CM, dE\*00, dE\*85, NR, L\*0, a\*0, b\*0, C\*0, h0, L\*1, a\*1, b\*1, C\*1, h1, CODE %

TUB registration: 20140801-YE10/YE10L0NP.PDF /.PS  
application for measurement of display or printer output, no separation  
TUB material: code=rh4ta



```
%L*0 a*0 b*0 C*ab0 hab0 L*1 a*1 b*1 C*ab1 hab1 DV dE*ab dE*94 dE*CM dE*00 dE*85 NR L*0 a*0 b*0 C*0 h0 L*1 a*1 b*1 C*1 h1 CODE %  
%CIELAB data for all colour (a) of experiment, iimp=96, colour difference pairs VA_EC114=VIK_ADJACENT_ECiimp=96, colour difference pairs , ioutn/s/3/4=0 1 0 0 %  
Minimum, maximum and average colour difference value  
STRESS constant F and STRESS value S  
iai+1 = 96, d_CIELABmina = 12.49, d_CIELABmaxa = 121.09, d_CIELABavea = 41.21  
iai+1 = 96, CIELAB_Fa = 0.95, CIELAB_STRESSa = 20.2  
  
iai+1 = 96, d_CIELCHmina = 12.49, d_CIELCHmaxa = 121.11, d_CIELCHavea = 41.22  
iai+1 = 96, CIELCH_Fa = 0.95, CIELCHSTRESSa = 20.2  
  
iai+1 = 96, d_C94LCHmina = 4.64, d_C94LCHmaxa = 72.88, d_C94LCHavea = 23.37  
iai+1 = 96, C94LCH_Fa = 0.53, C94LCHSTRESSa = 29.34  
  
iai+1 = 96, d_CMCLCHmina = 5.46, d_CMCLCHmaxa = 72.5, d_CMCLCHavea = 25.29  
iai+1 = 96, CMCLCH_Fa = 0.57, CMCLCHSTRESSa = 27.55  
  
iai+1 = 96, d_C00LCHmina = 4.1, d_C00LCHmaxa = 73.48, d_C00LCHavea = 22.67  
iai+1 = 96, C00LCH_Fa = 0.51, C00LCHSTRESSa = 27.56  
  
iai+1 = 96, d_C85LCHmina = 18.94, d_C85LCHmaxa = 583.86, d_C85LCHavea = 180.28  
iai+1 = 96, C85LCH_Fa = 4.04, C85LCHSTRESSa = 32.25
```

see similar files: <http://130.149.60.45/~farbmetrik/YE10/YE10.HTM>  
technical information: <http://www.ps.bam.de> or <http://130.149.60.45/~farbmetrik>

TUB registration: 20140801-YE10/YE10L0NP.PDF /.PS TUB material: code=rha4ta  
application for measurement of display or printer output, no separation

