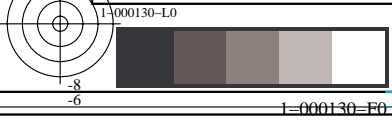


%Xn	Yn	Zn	X0	Y0	Z0	X1	Y1	Z1	DV	dE*ab	dE*76	dE*94	dE*CM	dE*00	dE*85	NR	L*0	a*0	b*0	C*0	h0	L*1	a*1	b*1	C*1	h1	CODE	%
%1000*(CIEXYZ & DV) for all colours (a) of experiment, iimp=60, colour difference pairs WA_EW060, xchart3=0, xchart4=0 %																												
0095050	0100000	0108880	0009850	0019310	0007710	0081450	0085450	0091950	0050890	07654	07655	04629	04526	04210	33839	11000051	51	-54	32	63	148	94	0	0	0	58	(L-W)	%
0095050	0100000	0108880	0009850	0019310	0007710	0004440	0004620	0005160	0056110	06902	06904	03110	04169	03533	28282	11000052	51	-54	32	63	148	26	0	0	0	317	(L-N)	%
0095050	0100000	0108880	0034100	0045600	0033770	0081450	0085450	0091950	0025440	04062	04062	02516	02748	02677	16706	11000053	73	-29	18	34	147	94	0	0	0	58	(LW-W)	%
0095050	0100000	0108880	0034100	0045600	0033770	0009850	0019310	0007710	0028390	03607	03608	02482	02144	02094	20241	11000054	73	-29	18	34	147	51	-54	32	63	148	(LW-L)	%
0095050	0100000	0108880	0006220	0009550	0007170	0004440	0004620	0005160	0035120	03198	03200	01809	02592	02471	14393	11000055	37	-27	10	29	158	26	0	0	0	317	(LN-N)	%
0095050	0100000	0108880	0006220	0009550	0007170	0009850	0019310	0007710	0018790	03771	03772	02103	01993	01758	15366	11000056	37	-27	10	29	158	51	-54	32	63	148	(LN-L)	%
0095050	0100000	0108880	0034100	0045600	0033770	0006220	0009550	0007170	0035680	03719	03718	03652	03199	03451	30614	11000057	73	-29	18	34	147	37	-27	10	29	158	(LW-LN)	%
0095050	0100000	0108880	0020680	0032750	0018600	0025350	0026540	0028860	0029950	05218	05218	01721	02938	02637	11453	11000058	64	-43	26	51	148	59	0	0	0	5	(Lw-NW)	%
0095050	0100000	0108880	0009850	0019310	0007710	0019170	0026000	0068570	0040720	08194	08195	04209	03975	04484	30494	11000059	51	-54	32	63	148	58	-25	-43	50	239	(L-C)	%
0095050	0100000	0108880	0020680	0032750	0018600	0019170	0026000	0068570	0041360	07315	07315	04156	03733	04223	28587	11000060	64	-43	26	51	148	58	-25	-43	50	239	(Lw-C)	%

see similar files: <http://130.149.60.45/~farbmetrik/YE11/YE11L0NP.PDF> / .PS
 technical information: <http://www.ps.bam.de> or <http://130.149.60.45/~farbmetrik>

TUB registration: 20140801-YE11/YE11L0NP.PDF /.PS
 application for measurement of display or printer output, no separation
 TUB material: code=rh4ta



%Xn	Yn	Zn	X0	Y0	Z0	X1	Y1	Z1	DV	dE*ab	dE*76	dE*94	dE*CM	dE*00	dE*85	NR	L*0	a*0	b*0	C*0	h0	L*1	a*1	b*1	C*1	h1	CODE	%
Minimum, maximum and average colour difference value																												
STRESS constant F and STRESS value S																												
iai+1 = 60, d_CIELABmina = 22.26, d_CIELABmaxa = 107.78, d_CIELABavea = 50.28																												
iai+1 = 60, CIELAB_Fa = 1.26, CIELAB_STRESSa = 22.08																												
iai+1 = 60, d_CIELCHmina = 22.28, d_CIELCHmaxa = 107.79, d_CIELCHavea = 50.29																												
iai+1 = 60, CIELCHFa = 1.26, CIELCHSTRESSa = 22.08																												
iai+1 = 60, d_C94LCHmina = 11.45, d_C94LCHmaxa = 65.31, d_C94LCHavea = 28.81																												
iai+1 = 60, C94LCHFa = 0.72, C94LCHSTRESSa = 26.04																												
iai+1 = 60, d_CMCLCHmina = 11.68, d_CMCLCHmaxa = 67.84, d_CMCLCHavea = 31.32																												
iai+1 = 60, CMCLCHFa = 0.78, CMCLCHSTRESSa = 19.0																												
iai+1 = 60, d_C00LCHmina = 9.39, d_C00LCHmaxa = 65.06, d_C00LCHavea = 29.37																												
iai+1 = 60, C00LCHFa = 0.73, C00LCHSTRESSa = 20.81																												
iai+1 = 60, d_C85LCHmina = 49.44, d_C85LCHmaxa = 514.71, d_C85LCHavea = 221.9																												
iai+1 = 60, C85LCHFa = 5.6, C85LCHSTRESSa = 26.73																												

see similar files: <http://130.149.60.45/~farbmetrik/YE11/YE11L0NP.PDF> / .PS
technical information: <http://www.ps.bam.de> or <http://130.149.60.45/~farbmetrik>

TUB registration: 20140801-YE11/YE11L0NP.PDF /.PS TUB material: code=rh4ta
application for measurement of display or printer output, no separation

%L*0	a*0	b*0	C*ab0	hab0	L*1	a*1	b*1	C*ab1	hab1	DV	dE*ab	dE*94	dE*CM	dE*00	dE*85	NR	L*0	a*0	b*0	C*0	h0	L*1	a*1	b*1	C*1	h1	CODE	%
%CIELAB data for all colour (a) of experiment, iimp=60, colour difference pairs WA_EW060, xchart3=0, xchart4=0 %																												
51.05	-54.12	32.83	63.3	148.75	94.08	0.44	0.74	0.86	58.9	50.89	76.54	46.29	45.26	42.1	338.3	11000051	51	-54	32	63	148	94	0	0	0	58	(L-W)	%
51.05	-54.12	32.83	63.3	148.75	25.65	0.65	-0.61	0.89	317.2	56.11	69.02	31.1	41.69	35.33	282.8	11000052	51	-54	32	63	148	26	0	0	0	317	(L-N)	%
73.29	-29.56	18.55	34.9	147.88	94.08	0.44	0.74	0.86	58.9	25.44	40.62	25.16	27.48	26.77	167.0	11000053	73	-29	18	34	147	94	0	0	0	58	(LW-W)	%
73.29	-29.56	18.55	34.9	147.88	51.05	-54.12	32.83	63.3	148.7	28.39	36.07	24.82	21.44	20.94	202.4	11000054	73	-29	18	34	147	51	-54	32	63	148	(LW-L)	%
37.04	-27.03	10.64	29.05	158.5	25.65	0.65	-0.61	0.89	317.2	35.12	31.98	18.09	25.92	24.71	143.9	11000055	37	-27	10	29	158	26	0	0	0	317	(LN-N)	%
37.04	-27.03	10.64	29.05	158.5	51.05	-54.12	32.83	63.3	148.7	18.79	37.71	21.03	19.93	17.58	153.6	11000056	37	-27	10	29	158	51	-54	32	63	148	(LN-L)	%
73.29	-29.56	18.55	34.9	147.88	37.04	-27.03	10.64	29.05	158.5	35.68	37.19	36.52	31.99	34.51	306.1	11000057	73	-29	18	34	147	37	-27	10	29	158	(LW-LN)	%
63.96	-43.91	26.87	51.48	148.52	58.55	0.52	0.05	0.52	5.9	29.95	52.18	17.21	29.38	26.37	114.5	11000058	64	-43	26	51	148	59	0	0	5	(Lw-NW)	%	
51.05	-54.12	32.83	63.3	148.75	58.04	-25.89	-43.77	50.86	239.3	40.72	81.94	42.09	39.75	44.84	304.9	11000059	51	-54	32	63	148	58	-25	-43	50	239	(L-C)	%
63.96	-43.91	26.87	51.48	148.52	58.04	-25.89	-43.77	50.86	239.3	41.36	73.15	41.56	37.33	42.23	285.8	11000060	64	-43	26	51	148	58	-25	-43	50	239	(Lw-C)	%

see similar files: <http://130.149.60.45/~farbmetrik/YE11/YE11.HTM>
 technical information: <http://www.ps.bam.de> or <http://130.149.60.45/~farbmetrik>

TUB registration: 20140801-YE11/YE11L0NP.PDF /.PS application for measurement of display or printer output, no separation
 TUB material: code=rh4ta

```
%L*0 a*0 b*0 C*ab0 hab0 L*1 a*1 b*1 C*ab1 hab1 DV dE*ab dE*94 dE*CM dE*00 dE*85 NR L*0 a*0 b*0 C*0 h0 L*1 a*1 b*1 C*1 h1 CODE %  
%CIELAB data for all colour (a) of experiment, iimp=60, colour difference pairs WA_EW060, xchart3=0, xchart4=0 %  
Minimum, maximum and average colour difference value  
STRESS constant F and STRESS value S  
iai+1 = 60, d_CIELABmina = 22.26, d_CIELABmaxa = 107.78, d_CIELABavea = 50.28  
iai+1 = 60, CIELAB_Fa = 1.26, CIELAB_STRESSa = 22.08  
  
iai+1 = 60, d_CIELCHmina = 22.28, d_CIELCHmaxa = 107.79, d_CIELCHavea = 50.29  
iai+1 = 60, CIELCHFa = 1.26, CIELCHSTRESSa = 22.08  
  
iai+1 = 60, d_C94LCHmina = 11.45, d_C94LCHmaxa = 65.31, d_C94LCHavea = 28.81  
iai+1 = 60, C94LCHFa = 0.72, C94LCHSTRESSa = 26.04  
  
iai+1 = 60, d_CMCLCHmina = 11.68, d_CMCLCHmaxa = 67.84, d_CMCLCHavea = 31.32  
iai+1 = 60, CMCLCHFa = 0.78, CMCLCHSTRESSa = 19.0  
  
iai+1 = 60, d_C00LCHmina = 9.39, d_C00LCHmaxa = 65.06, d_C00LCHavea = 29.37  
iai+1 = 60, C00LCHFa = 0.73, C00LCHSTRESSa = 20.81  
  
iai+1 = 60, d_C85LCHmina = 49.44, d_C85LCHmaxa = 514.71, d_C85LCHavea = 221.9  
iai+1 = 60, C85LCHFa = 5.6, C85LCHSTRESSa = 26.73
```

see similar files: <http://130.149.60.45/~farbmetrik/YE11/YE11L0NP.PDF> / .PS
technical information: <http://www.ps.bam.de> or <http://130.149.60.45/~farbmetrik>

TUB registration: 20140801-YE11/YE11L0NP.PDF /.PS TUB material: code=rh4ta
application for measurement of display or printer output, no separation

