

see similar files: http://130.149.60.45/~farbmetrik/YE41/YE41L0NP.PDF /.PS
technical information: http://www.ps.bam.de or http://130.149.60.45/~farbmetrik

Table with columns: %Xn, Yn, Zn, X0, Y0, Z0, X1, Y1, Z1, DV, dE*ab, dE*76, dE*94, dE*CM, dE*00, dE*85, NR, L*0, a*0, b*0, C*0, h0, L*1, a*1, b*1, C*1, h1, CODE, %

TUB registration: 20140801-YE41/YE41L0NP.PDF /.PS
application for measurement of display or printer output
TUB material: code=rha4ta

%Xn	Yn	Zn	X0	Y0	Z0	X1	Y1	Z1	DV	dE*ab	dE*76	dE*94	dE*CM	dE*00	dE*85	NR	L*0	a*0	b*0	C*0	h0	L*1	a*1	b*1	C*1	h1	CODE %
%1000*(CIEXYZ & DV) for all colours (a) of experiment, iimp=114, colour difference pairs VA_LD114, xchart3=1, xchart4=0 %																											
0095050	0100000	0108900	0031564	0016801	0008907	0032474	0016544	0020959	0016313	02958	02959	01400	01278	01440	10718	41000101	48	70	23	74	18	48	75	-5	75	355	(Y-Yn) %
0095050	0100000	0108900	0031564	0016801	0008907	0030157	0016753	0002527	0012559	03003	03007	01359	01721	01447	04629	41000102	48	70	23	74	18	48	65	53	84	39	(Yn-YN) %
0095050	0100000	0108900	0046533	0039404	0004835	0030157	0016753	0002527	0026110	04888	04888	02900	04223	03110	20982	41000103	69	27	75	80	70	48	65	53	84	39	(YN-Ny) %
0095050	0100000	0108900	0046533	0039404	0004835	0066702	0073903	0007494	0030562	04654	04653	02650	02645	02557	16221	41000104	69	27	75	80	70	89	-7	98	99	94	(Ny-N) %
0095050	0100000	0108900	0028031	0040716	0007177	0066703	0073927	0007609	0019186	04710	04710	02609	02303	02260	14989	41000105	70	-37	67	77	119	89	-7	98	98	94	(L-Ln) %
0095050	0100000	0108900	0028031	0040716	0007177	0009666	0020820	0006752	0024561	04144	04145	02449	02168	02114	15834	41000106	70	-37	67	77	119	53	-62	39	74	147	(Ln-LN) %
0095050	0100000	0108900	0013994	0023976	0027562	0009666	0020820	0006752	0022006	04483	04485	02277	01994	01879	12473	41000107	56	-46	-2	46	182	53	-62	39	74	147	(LN-Nl) %
0095050	0100000	0108900	0013994	0023976	0027562	0019412	0027521	0070135	0019910	04347	04347	02556	02264	02311	18292	41000108	56	-46	-2	46	182	59	-30	-42	52	234	(Nl-N) %
0095050	0100000	0108900	0024110	0025411	0024944	0081840	0087107	0084872	0028493	03743	03743	03739	02822	02707	26958	41000109	57	0	4	4	92	95	-1	6	7	104	(Z-W) %
0095050	0100000	0108900	0024110	0025411	0024944	0002842	0002952	0002904	0031133	03766	03766	03764	04001	03255	33943	41000110	57	0	4	4	92	20	0	2	2	72	(Z-N) %
0095050	0100000	0108900	0046611	0049509	0049371	0081734	0086938	0085092	0013822	01906	01906	01902	01375	01254	13607	41000111	76	-1	4	4	105	95	-1	6	6	104	(H-W) %
0095050	0100000	0108900	0046611	0049509	0049371	0024439	0025719	0025396	0015239	01804	01804	01803	01442	01458	15177	41000112	76	-1	4	4	105	58	0	4	4	90	(H-Z) %
0095050	0100000	0108900	0010118	0010588	0010333	0024439	0025719	0025396	0013822	01890	01890	01889	01769	01874	18560	41000113	39	0	3	3	82	58	0	4	4	90	(D-Z) %
0095050	0100000	0108900	0010118	0010588	0010333	0003004	0003115	0003093	0017213	01842	01842	01840	02306	01422	19758	41000114	39	0	3	3	82	21	0	1	2	68	(D-N) %

see similar files: <http://130.149.60.45/~farbmetrik/YE41/YE41L0NP.PDF> /PS
 technical information: <http://www.ps.bam.de> or <http://130.149.60.45/~farbmetrik>

TUB registration: 20140801-YE41/YE41L0NP.PDF /.PS
 application for measurement of display or printer output, no separation
 TUB material: code=rh4ta



%Xn	Yn	Zn	X0	Y0	Z0	X1	Y1	Z1	DV	dE*ab	dE*76	dE*94	dE*CM	dE*00	dE*85	NR	L*0 a*0 b*0 C*0 h0	L*1 a*1 b*1 C*1 h1	CODE %
%1000*(CIEXYZ & DV) for all colours (a) of experiment, iimp=114, colour difference pairs VA_LD114, xchart3=1, xchart4=0 %																			
Minimum, maximum and average colour difference value																			
STRESS constant F and STRESS value S																			
iai+1 = 114, d_CIELABmina = 12.48, d_CIELABmaxa = 121.09, d_CIELABavea = 40.09																			
iai+1 = 114, CIELAB_Fa = 1.78, CIELAB_STRESSa = 18.22																			
iai+1 = 114, d_CIELCHmina = 12.48, d_CIELCHmaxa = 121.11, d_CIELCHavea = 40.1																			
iai+1 = 114, CIELCHFa = 1.78, CIELCHSTRESSa = 18.22																			
iai+1 = 114, d_C94LCHmina = 4.64, d_C94LCHmaxa = 72.88, d_C94LCHavea = 23.33																			
iai+1 = 114, C94LCHFa = 1.03, C94LCHSTRESSa = 18.15																			
iai+1 = 114, d_CMCLCHmina = 5.46, d_CMCLCHmaxa = 72.5, d_CMCLCHavea = 24.91																			
iai+1 = 114, CMCLCHFa = 1.09, CMCLCHSTRESSa = 19.4																			
iai+1 = 114, d_C00LCHmina = 4.1, d_C00LCHmaxa = 73.48, d_C00LCHavea = 22.35																			
iai+1 = 114, C00LCHFa = 0.99, C00LCHSTRESSa = 17.61																			
iai+1 = 114, d_C85LCHmina = 18.94, d_C85LCHmaxa = 583.87, d_C85LCHavea = 179.56																			
iai+1 = 114, C85LCHFa = 7.92, C85LCHSTRESSa = 20.29																			

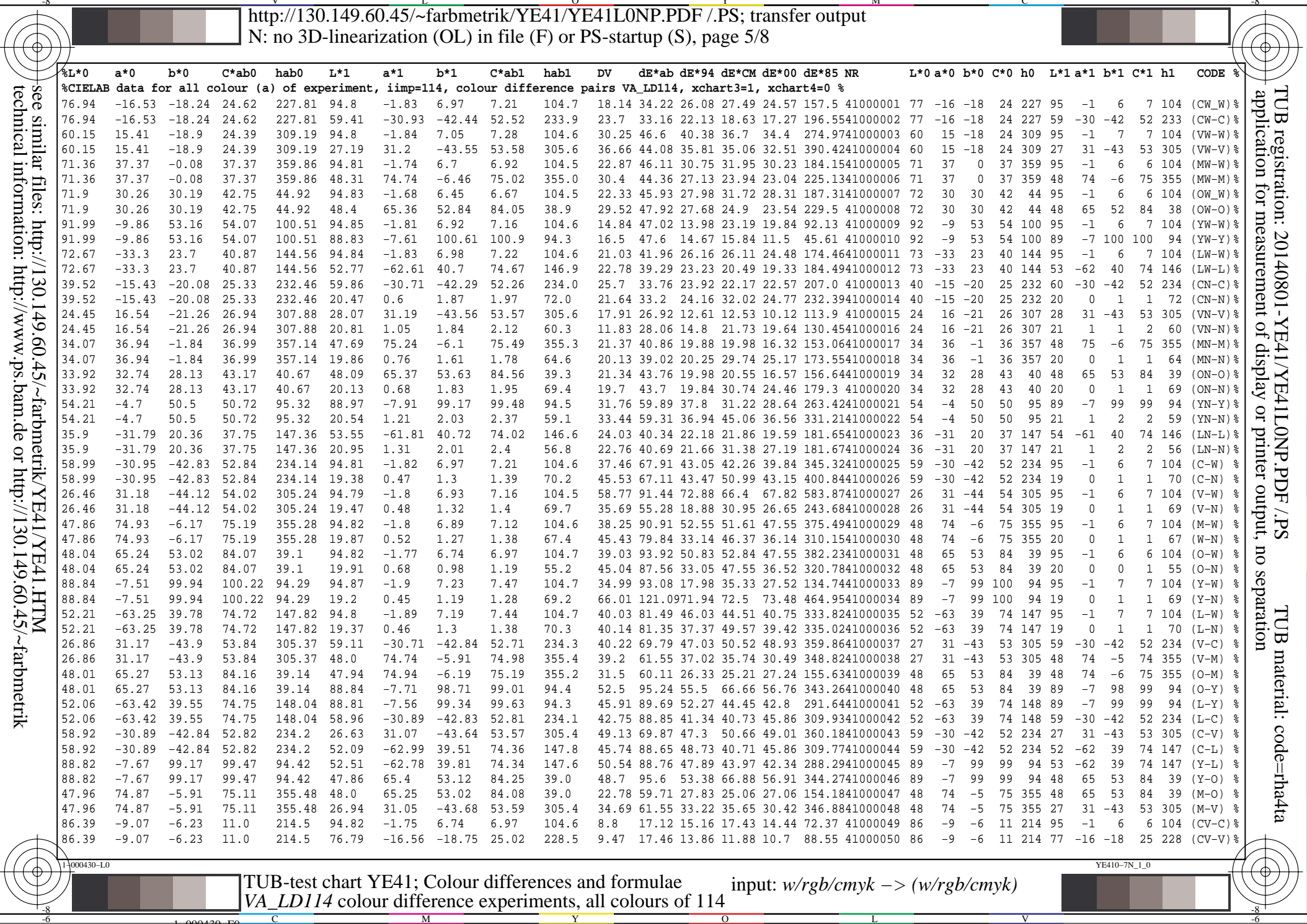
see similar files: <http://130.149.60.45/~farbmetrik/YE41/YE41L0NP.PDF> / .PS
technical information: <http://www.ps.bam.de> or <http://130.149.60.45/~farbmetrik>

TUB registration: 20140801-YE41/YE41L0NP.PDF /.PS TUB material: code=rh4ta
application for measurement of display or printer output, no separation

see similar files: http://130.149.60.45/~farbmetrik/YE41/YE41L0NP.PDF /PS
technical information: http://www.ps.bam.de or http://130.149.60.45/~farbmetrik

Table with columns: %L*0, a*0, b*0, C*ab0, hab0, L*1, a*1, b*1, C*ab1, hab1, DV, dE*ab, dE*94, dE*CM, dE*00, dE*85, NR, L*0, a*0, b*0, C*0, h0, L*1, a*1, b*1, C*1, h1, CODE %

TUB registration: 20140801-YE41/YE41L0NP.PDF /PS
application for measurement of display or printer output, no separation
TUB material: code=rh4ta



see similar files: http://130.149.60.45/~farbmetrik/YE41/YE41L0NP.PDF /PS application for measurement of display or printer output, no separation

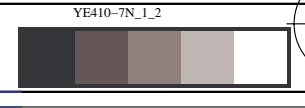
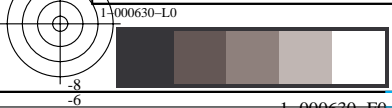
Table with columns: %L*0, a*0, b*0, C*ab0, hab0, L*1, a*1, b*1, C*ab1, hab1, DV, dE*ab, dE*94, dE*CM, dE*00, dE*85, NR, L*0, a*0, b*0, C*0, h0, L*1, a*1, b*1, C*1, h1, CODE %

TUB registration: 20140801-YE41/YE41L0NP.PDF /PS TUB material: code=rh4ta

%L*0	a*0	b*0	C*ab0	hab0	L*1	a*1	b*1	C*ab1	hab1	DV	dE*ab	dE*94	dE*CM	dE*00	dE*85	NR	L*0	a*0	b*0	C*0	h0	L*1	a*1	b*1	C*1	h1	CODE %
%CIELAB data for all colour (a) of experiment, iimp=114, colour difference pairs VA_LD114, xchart3=1, xchart4=0 %																											
48.02	70.32	23.53	74.15	18.49	47.69	75.03	-5.67	75.25	355.6	16.31	29.58	14.0	12.78	14.4	107.1841000101	48	70	23	74	18	48	75	-5	75	355	(Y-Yn) %	
48.02	70.32	23.53	74.15	18.49	47.96	65.36	53.14	84.24	39.1	12.55	30.03	13.59	17.21	14.47	46.29	41000102	48	70	23	74	18	48	65	53	84	39	(Yn-YN) %
69.05	27.5	75.76	80.6	70.05	47.96	65.36	53.14	84.24	39.1	26.11	48.88	29.0	42.23	31.1	209.8241000103	69	27	75	80	70	48	65	53	84	39	(YN-Ny) %	
69.05	27.5	75.76	80.6	70.05	88.88	-7.73	98.83	99.13	94.4	30.56	46.54	26.5	26.45	25.57	162.2141000104	69	27	75	80	70	89	-7	98	99	94	(Ny-N) %	
69.98	-37.76	67.42	77.27	119.25	88.89	-7.77	98.43	98.74	94.5	19.18	47.1	26.09	23.03	22.6	149.8941000105	70	-37	67	77	119	89	-7	98	98	94	(L-Ln) %	
69.98	-37.76	67.42	77.27	119.25	52.76	-62.93	39.35	74.22	147.9	24.56	41.44	24.49	21.68	21.14	158.3441000106	70	-37	67	77	119	53	-62	39	74	147	(Ln-LN) %	
56.07	-46.58	-2.26	46.64	182.77	52.76	-62.93	39.35	74.22	147.9	22.0	44.83	22.77	19.94	18.79	124.7341000107	56	-46	-2	46	182	53	-62	39	74	147	(LN-Nl) %	
56.07	-46.58	-2.26	46.64	182.77	59.46	-30.77	-42.61	52.56	234.1	19.91	43.47	25.56	22.64	23.11	182.9241000108	56	-46	-2	46	182	59	-30	-42	52	234	(Nl-N) %	
57.48	-0.18	4.3	4.31	92.5	94.78	-1.84	6.95	7.19	104.8	28.49	37.43	37.39	28.22	27.07	269.5841000109	57	0	4	4	92	95	-1	6	7	104	(Z-W) %	
57.48	-0.18	4.3	4.31	92.5	19.89	0.65	2.05	2.15	72.2	31.13	37.66	37.64	40.01	32.55	339.4341000110	57	0	4	4	92	20	0	2	2	72	(Z-N) %	
75.77	-1.25	4.57	4.74	105.36	94.71	-1.73	6.67	6.89	104.6	13.82	19.06	19.02	13.75	12.54	136.0741000111	76	-1	4	4	105	95	-1	6	6	104	(H-W) %	
75.77	-1.25	4.57	4.74	105.36	57.77	-0.02	4.08	4.08	90.4	15.23	18.04	18.03	14.42	14.58	151.7741000112	76	-1	4	4	105	58	0	4	4	90	(H-Z) %	
38.89	0.42	3.39	3.41	82.89	57.77	-0.02	4.08	4.08	90.4	13.82	18.9	18.89	17.69	18.74	185.6	41000113	39	0	3	3	82	58	0	4	4	90	(D-Z) %
38.89	0.42	3.39	3.41	82.89	20.53	0.75	1.9	2.04	68.2	17.21	18.42	18.4	23.06	14.22	197.5841000114	39	0	3	3	82	21	0	1	2	68	(D-N) %	

see similar files: <http://130.149.60.45/~farbmetrik/YE41/YE41L0NP.PDF> /PS
 technical information: <http://www.ps.bam.de> or <http://130.149.60.45/~farbmetrik>

TUB registration: 20140801-YE41/YE41L0NP.PDF /.PS
 application for measurement of display or printer output, no separation
 TUB material: code=rh4ta



```
%L*0 a*0 b*0 C*ab0 hab0 L*1 a*1 b*1 C*ab1 hab1 DV dE*ab dE*94 dE*CM dE*00 dE*85 NR L*0 a*0 b*0 C*0 h0 L*1 a*1 b*1 C*1 h1 CODE %  
%CIELAB data for all colour (a) of experiment, iimp=114, colour difference pairs VA_LD114, xchart3=1, xchart4=0 %  
Minimum, maximum and average colour difference value  
STRESS constant F and STRESS value S  
iai+1 = 114, d_CIELABmina = 12.48, d_CIELABmaxa = 121.09, d_CIELABavea = 40.09  
iai+1 = 114, CIELAB_Fa = 1.78, CIELAB_STRESSa = 18.22  
  
iai+1 = 114, d_CIELCHmina = 12.48, d_CIELCHmaxa = 121.11, d_CIELCHavea = 40.1  
iai+1 = 114, CIELCHFa = 1.78, CIELCHSTRESSa = 18.22  
  
iai+1 = 114, d_C94LCHmina = 4.64, d_C94LCHmaxa = 72.88, d_C94LCHavea = 23.33  
iai+1 = 114, C94LCHFa = 1.03, C94LCHSTRESSa = 18.15  
  
iai+1 = 114, d_CMCLCHmina = 5.46, d_CMCLCHmaxa = 72.5, d_CMCLCHavea = 24.91  
iai+1 = 114, CMCLCHFa = 1.09, CMCLCHSTRESSa = 19.4  
  
iai+1 = 114, d_C00LCHmina = 4.1, d_C00LCHmaxa = 73.48, d_C00LCHavea = 22.35  
iai+1 = 114, C00LCHFa = 0.99, C00LCHSTRESSa = 17.61  
  
iai+1 = 114, d_C85LCHmina = 18.94, d_C85LCHmaxa = 583.87, d_C85LCHavea = 179.56  
iai+1 = 114, C85LCHFa = 7.92, C85LCHSTRESSa = 20.29
```

see similar files: <http://130.149.60.45/~farbmetrik/YE41/YE41L0NP.PDF> / .PS
technical information: <http://www.ps.bam.de> or <http://130.149.60.45/~farbmetrik>

TUB registration: 20140801-YE41/YE41L0NP.PDF /.PS TUB material: code=rh4ta
application for measurement of display or printer output, no separation

