





%Xn	Yn	Zn	X0	Y0	Z0	X1	Y1	Z1	DV	dE*ab	dE*76	dE*94	dE*CM	dE*00	dE*85	NR	L*0	a*0	b*0	C*0	h0	L*1	a*1	b*1	C*1	h1	CODE %
%1000*(CIEXYZ & DV) for all colours (a) of experiment, iimp=114, colour difference pairs Ks_LD114, xchart3=1, xchart4=0 %																											
0095050	0100000	0108900	0031694	0016902	0008998	0032513	0016565	0021124	0017199	02978	02979	01410	01287	01449	10825	47000101	48	70	23	74	18	48	75	-5	75	355	(Y-Yn) %
0095050	0100000	0108900	0031694	0016902	0008998	0030216	0016788	0002548	0011750	03000	03004	01358	01718	01445	04645	47000102	48	70	23	74	18	48	65	53	84	39	(Yn-YN) %
0095050	0100000	0108900	0046516	0039355	0004903	0030216	0016788	0002548	0026649	04865	04865	02890	04197	03096	20912	47000103	69	27	75	80	69	48	65	53	84	39	(YN-Ny) %
0095050	0100000	0108900	0046516	0039355	0004903	0066886	0074058	0007601	0029980	04666	04665	02662	02657	02566	16293	47000104	69	27	75	80	69	89	-7	98	98	94	(Ny-N) %
0095050	0100000	0108900	0027965	0040593	0007138	0066390	0073526	0007533	0023185	04703	04703	02601	02299	02257	14936	47000105	70	-37	67	77	119	89	-7	98	98	94	(L-Ln) %
0095050	0100000	0108900	0027965	0040593	0007138	0009640	0020746	0006848	0020658	04176	04178	02460	02181	02126	15850	47000106	70	-37	67	77	119	53	-62	38	73	148	(Ln-LN) %
0095050	0100000	0108900	0013844	0023804	0027534	0009640	0020746	0006848	0023860	04446	04448	02264	01982	01877	12479	47000107	56	-46	-2	46	183	53	-62	38	73	148	(LN-NL) %
0095050	0100000	0108900	0013844	0023804	0027534	0019533	0027602	0070154	0017957	04333	04334	02547	02261	02304	18161	47000108	56	-46	-2	46	183	60	-30	-42	52	234	(N1-N) %
0095050	0100000	0108900	0024135	0025429	0024909	0082008	0087263	0085081	0027738	03747	03747	03744	02824	02708	26978	47000109	58	0	4	4	92	95	-1	6	7	104	(Z-W) %
0095050	0100000	0108900	0024135	0025429	0024909	0002845	0002949	0002928	0031951	03771	03771	03769	04007	03260	33961	47000110	58	0	4	4	92	20	0	1	2	67	(Z-N) %
0095050	0100000	0108900	0046715	0049536	0049646	0081804	0087018	0085061	0013463	01912	01912	01907	01383	01261	13619	47000111	76	-1	4	4	103	95	-1	6	6	104	(H-W) %
0095050	0100000	0108900	0046715	0049536	0049646	0024501	0025747	0025428	0014526	01802	01802	01801	01439	01455	15167	47000112	76	-1	4	4	103	58	0	4	4	88	(H-Z) %
0095050	0100000	0108900	0010136	0010606	0010408	0024501	0025747	0025428	0016404	01890	01890	01889	01769	01874	18552	47000113	39	0	3	3	82	58	0	4	4	88	(D-Z) %
0095050	0100000	0108900	0010136	0010606	0010408	0002979	0003090	0003102	0015837	01855	01855	01853	02324	01432	19879	47000114	39	0	3	3	82	20	0	1	1	66	(D-N) %

see similar files: <http://130.149.60.45/~farbmetrik/YE47/YE47L0NP.PDF> /PS  
technical information: <http://www.ps.bam.de> or <http://130.149.60.45/~farbmetrik>

TUB registration: 20140801-YE47/YE47L0NP.PDF /.PS  
application for measurement of display or printer output, no separation  
TUB material: code=rh4ta

%Xn	Yn	Zn	X0	Y0	Z0	X1	Y1	Z1	DV	dE*ab	dE*76	dE*94	dE*CM	dE*00	dE*85	NR	L*0	a*0	b*0	C*0	h0	L*1	a*1	b*1	C*1	h1	CODE %
%1000*(CIEXYZ & DV) for all colours (a) of experiment, iimp=114, colour difference pairs Ks_LD114, xchart3=1, xchart4=0 %																											
Minimum, maximum and average colour difference value																											
STRESS constant F and STRESS value S																											
iai+1 = 114, d_CIELABmina = 12.86, d_CIELABmaxa = 120.78, d_CIELABavea = 40.07																											
iai+1 = 114, CIELAB_Fa = 1.76, CIELAB_STRESSa = 19.92																											
iai+1 = 114, d_CIELCHmina = 12.86, d_CIELCHmaxa = 120.8, d_CIELCHavea = 40.08																											
iai+1 = 114, CIELCHFa = 1.76, CIELCHSTRESSa = 19.92																											
iai+1 = 114, d_C94LCHmina = 4.78, d_C94LCHmaxa = 73.0, d_C94LCHavea = 23.32																											
iai+1 = 114, C94LCHFa = 1.03, C94LCHSTRESSa = 16.7																											
iai+1 = 114, d_CMCLCHmina = 5.69, d_CMCLCHmaxa = 72.33, d_CMCLCHavea = 24.89																											
iai+1 = 114, CMCLCHFa = 1.09, CMCLCHSTRESSa = 18.44																											
iai+1 = 114, d_C00LCHmina = 4.17, d_C00LCHmaxa = 73.27, d_C00LCHavea = 22.34																											
iai+1 = 114, C00LCHFa = 0.99, C00LCHSTRESSa = 16.64																											
iai+1 = 114, d_C85LCHmina = 20.1, d_C85LCHmaxa = 584.44, d_C85LCHavea = 179.49																											
iai+1 = 114, C85LCHFa = 7.87, C85LCHSTRESSa = 20.12																											

see similar files: <http://130.149.60.45/~farbmetrik/YE47/YE47L0NP.PDF> / .PS  
technical information: <http://www.ps.bam.de> or <http://130.149.60.45/~farbmetrik>

TUB registration: 20140801-YE47/YE47L0NP.PDF /.PS TUB material: code=rh4ta  
application for measurement of display or printer output, no separation

see similar files: http://130.149.60.45/~farbmetrik/YE47/YE47L0NP.PDF /.PS  
technical information: http://www.ps.bam.de or http://130.149.60.45/~farbmetrik

Table with columns: %L\*0, a\*0, b\*0, C\*ab0, hab0, L\*1, a\*1, b\*1, C\*ab1, hab1, DV, dE\*ab, dE\*94, dE\*CM, dE\*00, dE\*85, NR, L\*0, a\*0, b\*0, C\*0, h0, L\*1, a\*1, b\*1, C\*1, h1, CODE %

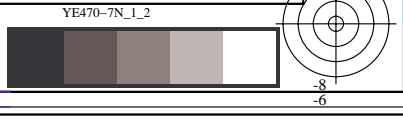
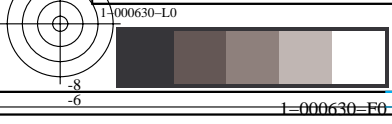
TUB registration: 20140801-YE47/YE47L0NP.PDF /.PS  
application for measurement of display or printer output, no separation  
TUB material: code=rh4ta



%L*0	a*0	b*0	C*ab0	hab0	L*1	a*1	b*1	C*ab1	hab1	DV	dE*ab	dE*94	dE*CM	dE*00	dE*85	NR	L*0	a*0	b*0	C*0	h0	L*1	a*1	b*1	C*1	h1	CODE %
%CIELAB data for all colour (a) of experiment, iimp=114, colour difference pairs Ks_LD114, xchart3=1, xchart4=0 %																											
48.14	70.25	23.45	74.06	18.46	47.72	75.05	-5.93	75.29	355.4	17.19	29.78	14.1	12.87	14.49	108.2547000101	48	70	23	74	18	48	75	-5	75	355	(Y-Yn) %	
48.14	70.25	23.45	74.06	18.46	48.0	65.39	53.06	84.22	39.0	11.75	30.0	13.58	17.18	14.45	46.45	47000102	48	70	23	74	18	48	65	53	84	39	(Yn-YN) %
69.01	27.6	75.37	80.27	69.88	48.0	65.39	53.06	84.22	39.0	26.64	48.65	28.9	41.97	30.96	209.1247000103	69	27	75	80	69	48	65	53	84	39	(YN-Ny) %	
69.01	27.6	75.37	80.27	69.88	88.95	-7.63	98.57	98.86	94.4	29.98	46.66	26.62	26.57	25.66	162.9347000104	69	27	75	80	69	89	-7	98	98	94	(Ny-N) %	
69.89	-37.65	67.41	77.22	119.18	88.7	-7.65	98.38	98.67	94.4	23.18	47.03	26.01	22.99	22.57	149.3647000105	70	-37	67	77	119	89	-7	98	98	94	(L-Ln) %	
69.89	-37.65	67.41	77.22	119.18	52.68	-62.79	38.84	73.83	148.2	20.65	41.76	24.6	21.81	21.26	158.5	47000106	70	-37	67	77	119	53	-62	38	73	148	(Ln-LN) %
55.9	-46.78	-2.51	46.85	183.07	52.68	-62.79	38.84	73.83	148.2	23.86	44.46	22.64	19.82	18.77	124.7947000107	56	-46	-2	46	183	53	-62	38	73	148	(LN-Nl) %	
55.9	-46.78	-2.51	46.85	183.07	59.53	-30.48	-42.5	52.3	234.3	17.95	43.33	25.47	22.61	23.04	181.6147000108	56	-46	-2	46	183	60	-30	-42	52	234	(Nl-N) %	
57.5	-0.15	4.39	4.39	92.0	94.85	-1.8	6.91	7.14	104.6	27.73	37.47	37.44	28.24	27.08	269.7847000109	58	0	4	4	92	95	-1	6	7	104	(Z-W) %	
57.5	-0.15	4.39	4.39	92.0	19.87	0.76	1.86	2.02	67.7	31.95	37.71	37.69	40.07	32.6	339.6147000110	58	0	4	4	92	20	0	1	2	67	(Z-N) %	
75.78	-1.03	4.31	4.44	103.48	94.75	-1.75	6.75	6.97	104.5	13.46	19.12	19.07	13.83	12.61	136.1947000111	76	-1	4	4	103	95	-1	6	6	104	(H-W) %	
75.78	-1.03	4.31	4.44	103.48	57.8	0.12	4.07	4.07	88.2	14.52	18.02	18.01	14.39	14.55	151.6747000112	76	-1	4	4	103	58	0	4	4	88	(H-Z) %	
38.92	0.42	3.22	3.25	82.41	57.8	0.12	4.07	4.07	88.2	16.4	18.9	18.89	17.69	18.74	185.5247000113	39	0	3	3	82	58	0	4	4	88	(D-Z) %	
38.92	0.42	3.22	3.25	82.41	20.44	0.74	1.67	1.83	66.1	15.83	18.55	18.53	23.24	14.32	198.7947000114	39	0	3	3	82	20	0	1	1	66	(D-N) %	

see similar files: <http://130.149.60.45/~farbmetrik/YE47/YE47L0NP.PDF> / .PS  
 technical information: <http://www.ps.bam.de> or <http://130.149.60.45/~farbmetrik>

TUB registration: 20140801-YE47/YE47L0NP.PDF /.PS  
 application for measurement of display or printer output, no separation  
 TUB material: code=rh4ta



```
%L*0 a*0 b*0 C*ab0 hab0 L*1 a*1 b*1 C*ab1 hab1 DV dE*ab dE*94 dE*CM dE*00 dE*85 NR L*0 a*0 b*0 C*0 h0 L*1 a*1 b*1 C*1 h1 CODE %  
%CIELAB data for all colour (a) of experiment, iimp=114, colour difference pairs Ks_LD114, xchart3=1, xchart4=0 %  
Minimum, maximum and average colour difference value  
STRESS constant F and STRESS value S  
iai+1 = 114, d_CIELABmina = 12.86, d_CIELABmaxa = 120.78, d_CIELABavea = 40.07  
iai+1 = 114, CIELAB_Fa = 1.76, CIELAB_STRESSa = 19.92  
  
iai+1 = 114, d_CIELCHmina = 12.86, d_CIELCHmaxa = 120.8, d_CIELCHavea = 40.08  
iai+1 = 114, CIELCHFa = 1.76, CIELCHSTRESSa = 19.92  
  
iai+1 = 114, d_C94LCHmina = 4.78, d_C94LCHmaxa = 73.0, d_C94LCHavea = 23.32  
iai+1 = 114, C94LCHFa = 1.03, C94LCHSTRESSa = 16.7  
  
iai+1 = 114, d_CMCLCHmina = 5.69, d_CMCLCHmaxa = 72.33, d_CMCLCHavea = 24.89  
iai+1 = 114, CMCLCHFa = 1.09, CMCLCHSTRESSa = 18.44  
  
iai+1 = 114, d_C00LCHmina = 4.17, d_C00LCHmaxa = 73.27, d_C00LCHavea = 22.34  
iai+1 = 114, C00LCHFa = 0.99, C00LCHSTRESSa = 16.64  
  
iai+1 = 114, d_C85LCHmina = 20.1, d_C85LCHmaxa = 584.44, d_C85LCHavea = 179.49  
iai+1 = 114, C85LCHFa = 7.87, C85LCHSTRESSa = 20.12
```

see similar files: <http://130.149.60.45/~farbmetrik/YE47/YE47L0NP.PDF> / .PS  
technical information: <http://www.ps.bam.de> or <http://130.149.60.45/~farbmetrik>

TUB registration: 20140801-YE47/YE47L0NP.PDF /.PS TUB material: code=rh4ta  
application for measurement of display or printer output, no separation

