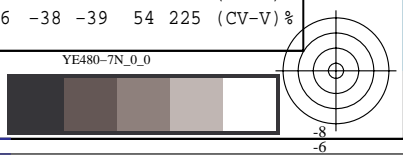
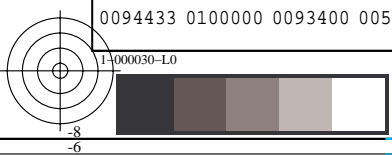


see similar files: http://130.149.60.45/~farbmetrik/YE48/YE48L0NP.PDF /.PS
technical information: http://www.ps.bam.de or http://130.149.60.45/~farbmetrik

TUB registration: 20140801-YE48/YE48L0NP.PDF /.PS
application for measurement of display or printer output
TUB material: code=rh4ta

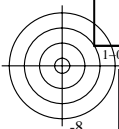
Table with columns: %Xn, Yn, Zn, X0, Y0, Z0, X1, Y1, Z1, DV, dE*ab, dE*76, dE*94, dE*CM, dE*M0, dE*85, NR, L*0, a*0, b*0, C*0, h0, L*1, a*1, b*1, C*1, h1, CODE %



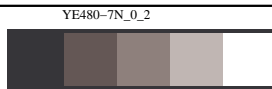
%Xn	Yn	Zn	X0	Y0	Z0	X1	Y1	Z1	DV	dE*ab	dE*76	dE*94	dE*CM	dE*00	dE*85	NR	L*0 a*0 b*0 C*0 h0	L*1 a*1 b*1 C*1 h1	CODE %
%1000*(CIEXYZ & DV) for all colours (a) of experiment, iimp=98, colour difference pairs Ma_LD098, xchart3=1, xchart4=0 %																			
Minimum, maximum and average colour difference value																			
STRESS constant F and STRESS value S																			
iai+1 = 98, d_CIELABmina = 9.39, d_CIELABmaxa = 107.01, d_CIELABavea = 39.74																			
iai+1 = 98, CIELAB_Fa = 1.67, CIELAB_STRESSa = 25.9																			
iai+1 = 98, d_CIELCHmina = 9.03, d_CIELCHmaxa = 103.5, d_CIELCHavea = 38.95																			
iai+1 = 98, CIELCHFa = 1.63, CIELCHSTRESSa = 25.76																			
iai+1 = 98, d_C94LCHmina = 4.63, d_C94LCHmaxa = 66.98, d_C94LCHavea = 24.4																			
iai+1 = 98, C94LCHFa = 1.02, C94LCHSTRESSa = 28.81																			
iai+1 = 98, d_CMCLCHmina = 5.16, d_CMCLCHmaxa = 65.57, d_CMCLCHavea = 25.67																			
iai+1 = 98, CMCLCHFa = 1.07, CMCLCHSTRESSa = 24.35																			
iai+1 = 98, d_C00LCHmina = 3.55, d_C00LCHmaxa = 66.65, d_C00LCHavea = 23.42																			
iai+1 = 98, C00LCHFa = 0.99, C00LCHSTRESSa = 23.83																			
iai+1 = 98, d_C85LCHmina = 23.74, d_C85LCHmaxa = 513.03, d_C85LCHavea = 182.49																			
iai+1 = 98, C85LCHFa = 7.6, C85LCHSTRESSa = 32.02																			

see similar files: <http://130.149.60.45/~farbmetrik/YE48/YE48L0NP.PDF> / .PS
technical information: <http://www.ps.bam.de> or <http://130.149.60.45/~farbmetrik>

TUB registration: 20140801-YE48/YE48L0NP.PDF /.PS TUB material: code=rha4ta
application for measurement of display or printer output, no separation



1-000230-L0



YE480-7N_0_2



see similar files: http://130.149.60.45/~farbmetrik/YE48/YE48L0NP.PDF /PS application for measurement of display or printer output, no separation

Table with columns: %L*0, a*0, b*0, C*ab0, hab0, L*1, a*1, b*1, C*ab1, hab1, DV, dE*ab, dE*94, dE*CM, dE*00, dE*85, NR, L*0, a*0, b*0, C*0, h0, L*1, a*1, b*1, C*1, h1, CODE %

TUB registration: 20140801 - YE48/YE48L0NP.PDF /PS TUB material: code=rh4ta

see similar files: http://130.149.60.45/~farbmetrik/YE48/YE48L0NP.PDF /.PS
technical information: http://www.ps.bam.de or http://130.149.60.45/~farbmetrik

Table with columns: %L*0, a*0, b*0, C*ab0, hab0, L*1, a*1, b*1, C*ab1, hab1, DV, dE*ab, dE*94, dE*CM, dE*00, dE*85, NR, L*0, a*0, b*0, C*0, h0, L*1, a*1, b*1, C*1, h1, CODE %

TUB registration: 20140801-YE48/YE48L0NP.PDF /.PS
application for measurement of display or printer output, no separation
TUB material: code=rh4ta


```
%L*0 a*0 b*0 C*ab0 hab0 L*1 a*1 b*1 C*ab1 hab1 DV dE*ab dE*94 dE*CM dE*00 dE*85 NR L*0 a*0 b*0 C*0 h0 L*1 a*1 b*1 C*1 h1 CODE %  
%CIELAB data for all colour (a) of experiment, iimp=98, colour difference pairs Ma_LD098, xchart3=1, xchart4=0 %  
Minimum, maximum and average colour difference value  
STRESS constant F and STRESS value S  
iai+1 = 98, d_CIELABmina = 9.39, d_CIELABmaxa = 107.01, d_CIELABavea = 39.74  
iai+1 = 98, CIELAB_Fa = 1.67, CIELAB_STRESSa = 25.9  
  
iai+1 = 98, d_CIELCHmina = 9.03, d_CIELCHmaxa = 103.5, d_CIELCHavea = 38.95  
iai+1 = 98, CIELCHFa = 1.63, CIELCHSTRESSa = 25.76  
  
iai+1 = 98, d_C94LCHmina = 4.63, d_C94LCHmaxa = 66.98, d_C94LCHavea = 24.4  
iai+1 = 98, C94LCHFa = 1.02, C94LCHSTRESSa = 28.81  
  
iai+1 = 98, d_CMCLCHmina = 5.16, d_CMCLCHmaxa = 65.57, d_CMCLCHavea = 25.67  
iai+1 = 98, CMCLCHFa = 1.07, CMCLCHSTRESSa = 24.35  
  
iai+1 = 98, d_C00LCHmina = 3.55, d_C00LCHmaxa = 66.65, d_C00LCHavea = 23.42  
iai+1 = 98, C00LCHFa = 0.99, C00LCHSTRESSa = 23.83  
  
iai+1 = 98, d_C85LCHmina = 23.74, d_C85LCHmaxa = 513.03, d_C85LCHavea = 182.49  
iai+1 = 98, C85LCHFa = 7.6, C85LCHSTRESSa = 32.02
```

see similar files: <http://130.149.60.45/~farbmetrik/YE48/YE48L0NP.PDF> / .PS
technical information: <http://www.ps.bam.de> or <http://130.149.60.45/~farbmetrik>

TUB registration: 20140801-YE48/YE48L0NP.PDF /.PS TUB material: code=rh4ta
application for measurement of display or printer output, no separation